

PROPETRO

JOB LOG

TICKER NUMBER: PW 354

CEMENTING - ROCKY MOUNTAIN DIVISION

P.O. BOX 827 - VERNAL UT, 84078 - (435) 789-7407

COMPANY NAME: LARAMIE ENERGY

DATE:

9/23/2020

COUNTY:

MESA COLORADO

LEASE NAME: HAWKINS RANCH 10-2C

RIG#:

ENSIGN 351

[illegible]

OPERATOR: PATRICK WALLEN

ACCEPTED AND APPROVED BY:

PROPETRO**JOB SUMMARY****TICKER NUMBER: PW 354****CEMENTING - ROCKY MOUNTAIN DIVISION****P.O. BOX 827 - VERNAL UT, 84078 - (435) 789-7407****COMPANY NAME: LARAMIE ENERGY****DATE 9/23/2020****COUNTY MESA COLORADO****LEASE NAME: HAWKINS RANCH 10-2C****RIG# ENSIGN 351****JOB DISCIPTION: PLUG & ABANDON**

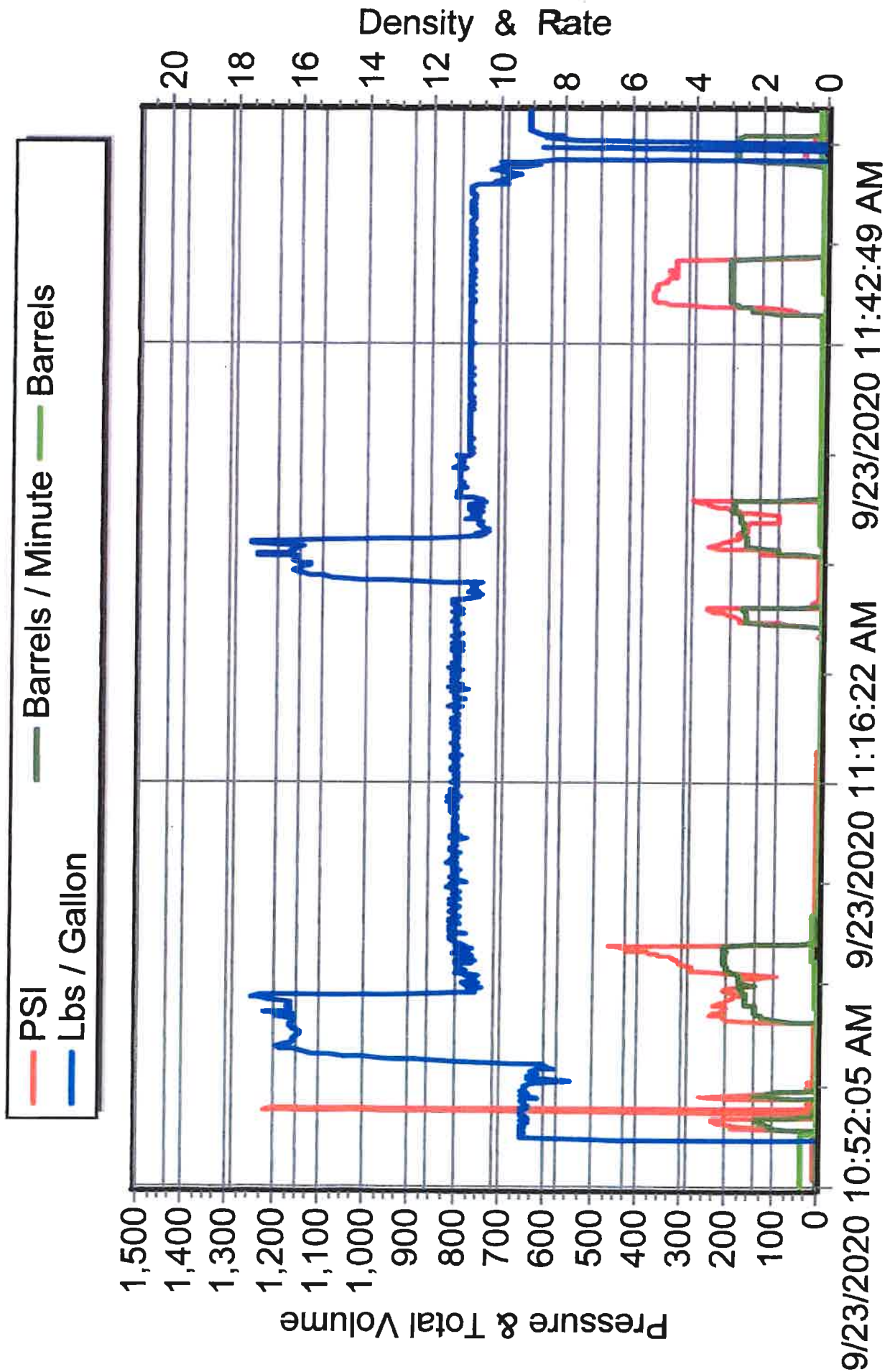
DESCRIPTION	WGT/GRADE	THREAD	DEPTH FROM	DEPTH TO
SURFACE CSG SIZE:	8 5/8			
INTER CSG SIZE:				
PROD CSG SIZE:	4 1/2			
LINER CSG SIZE:				
TBG OR DP SIZE:	2 3/8		0	2350
MATERIALS FURNISHED	SACKS	SLURRY WT PPG	SLURRY YIELD FT3	WATER GAL/SK
PREMIUM (G) NEAT	94	15.8	1.15	5

EQUIPMENT: #1373, #69, #27-26**PERSONELL: PAT, RYAN, JANEL**

COMMENTS: #1. BALANCE 32 SACK 423 FOOT PLUG FROM 2350' TO 1927, POOH #2.
BALANCE 20 SACK 264 FOOT PLUG FROM 1630' TO 1365' POOH
REVERSE TUBING CLEAR.
#3.MIX AND PUMP 42 SACKS OF CEMENT DOWN PRODUCTION THOUGH PERFS AT 100 FEET
CEMENT TO SURFACE IN SURFACE CASING.

OPERATOR: PATRICK WALLEN ACCEPTED AND APPROVED BY:

LARAMIE ENERGY HAWKINS RANCH 10-2C P&A PAGE 1



LARAMIE ENERGY HAWKINS RANCH 10-2C P&A PAGE 2

