

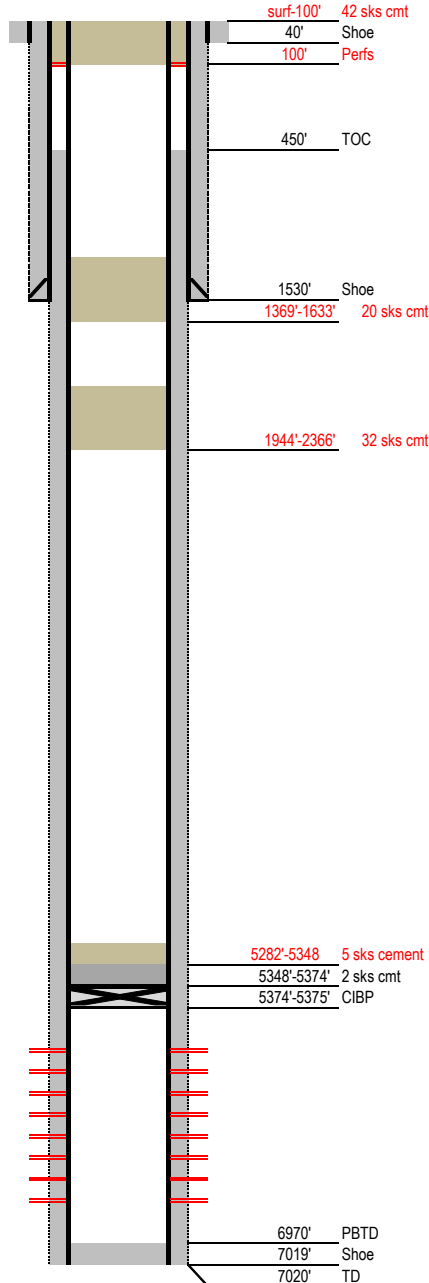
# Laramie Energy

## Final P&A Wellbore Diagram

Not to Scale

FEDERAL WELL: YES ☐ NO ☒

Geological Tops	Depth (MD)
Wasatch F	1631'
Wasatch G	1842'
Ft Union Shale	2126'
Ft Union Shale	2533'
Ohio Creek	3862'
Williams Fork	4127'
Rollins	6831'



**Well Name** Hawkins Ranch 10-2C  
**API** 05-077-09622-00  
**Surface Location** NWNW S10, T10S, R94W  
**GPS Coordinates** 39.210861 -107.874109  
**Bottom Hole Loc** 1189' FNL & 1971' FEL SEC 10 T10S R94W  
**Field** Plateau # 69300  
**County, State** Mesa, CO # 077  
**Spud Date** 10/15/2008  
**Completion Date** 10/24/2008  
**Diagram Date** 10/16/2020  
**KB Elevation** 7218'  
**KB** 15'  
**GL Elevation** 7203'

**Hole** -  
**Conductor** 20" .25" wall @ 40'  
**Cement** Surface

**Surface Hole** 12.25" @ 1530'  
**Casing** 8.625" 32# J55 STC @ 1530'  
**TOC** Surface

**Production Hole** 7.875" @ 7020'  
**Casing** 4.5" 11.6# I80 @ 7020'  
**Cement**  
**TOC** 450'

### Tubing

Perforations	Top	Bottom
	5427'	5659'
	5730'	5988'
	6105	6385'
	6586'	6747'