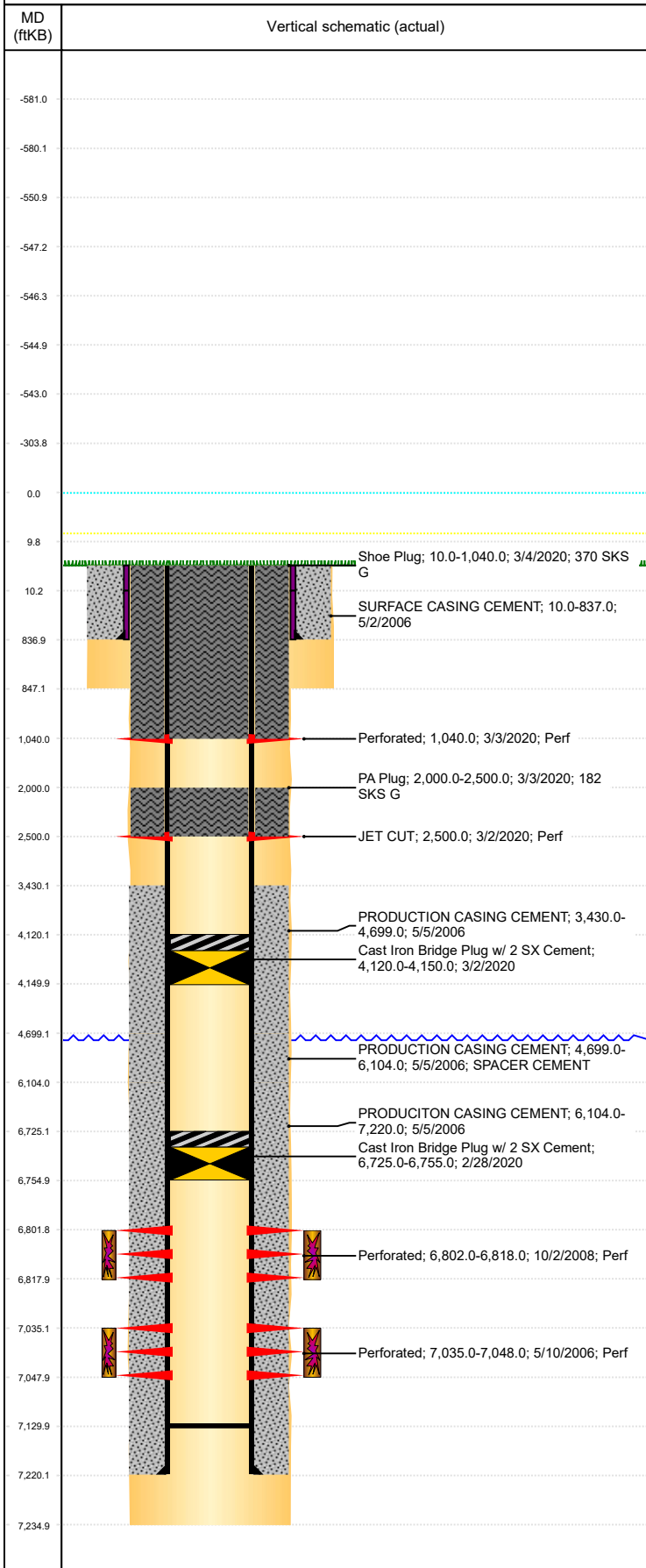


**Well Name: LIAM D34-11**

VERTICAL, ORIGINAL HOLE, 4/17/2020 2:24:47 PM



Well Header									
API 05-123-23725			Business Unit DJ BASIN			District 15		Well Config VERTICAL	
KB - GL / MSL (ft... 10.00		Spud Date 5/1/2006		P & A Date		Well Production Status PA			SoRT Yes
Comment									
Surface Location (Congressional)									
Qtr 3 NE	Qtr 4 SW	Section 34	Twnshp 3	Twnsh... N	Range 64	Rng E/... W	Actual Latitude (°) 40.17979803		Actual Longitude (°) -104.53991899
Wellbore Sections									
Section Des			Size (in)			Act Top, MD (ftKB)		Act Btm, MD (ftKB)	
SURFACE			12 1/4			10		847	
PRODUCTION			7 7/8			847		7,235	
Casing Strings									
Csg Des			Run Date		OD (in)	Wt/Len (lb/ft)	Grade	Top, MD (ftKB)	MD (ftKB)
Surface			5/1/2006		8 5/8	24.00	J-55	10.0	837.0
Production			5/5/2006		4 1/2	11.60	M-80	10.0	7,220.0
Cement									
Des					Start Date		Top (ftKB)		Btm (ftKB)
SURFACE CASING CEMENT					5/2/2006		10.0		837.0
PRODUCTION CASING CEMENT					5/5/2006		3,430.0		4,699.0
PRODUCTION CASING CEMENT					5/5/2006		4,699.0		6,104.0
PRODUCITON CASING CEMENT					5/5/2006		6,104.0		7,220.0
PA Plug					3/3/2020		2,000.0		2,500.0
Shoe Plug					3/4/2020		10.0		1,040.0
Zone Statuses									
Zone Name		Status Date	Status	Fluid Type	Job			Prod Method	
CODELL		8/17/2010	PR	Water	PLUG AND ABANDON, 2/27/2020 00:00			Flowing	
CODELL		2/28/2020	P&A						
NIOBRARA		6/13/2017	SI		PLUG AND ABANDON, 2/27/2020 00:00				
NIOBRARA		2/28/2020	P&A						
Perforation Data									
Linked Zone			Bnch/Stg	Entered Shot Total	Top (ftKB)		Btm (ftKB)		Date
NIOBRARA, ORIGINAL HOLE CODELL, ORIGINAL HOLE				6	1,040.00		1,040.00		3/3/2020
					2,500.00		2,500.00		3/2/2020
				64	6,802.00		6,818.00		10/2/2008
				52	7,035.00		7,048.00		5/10/2006
Stimulation Intervals									
Zone				Start Date		Top (ftKB)		Btm (ftKB)	
NIOBRARA, ORIGINAL HOLE				10/14/2008		6,802.0		6,818.0	
CODELL, ORIGINAL HOLE				6/9/2006		7,035.0		7,048.0	
Other In Hole									
Run Date		Des			Make		OD (in)	Top (ftKB)	Btm (ftKB)
7/13/2016		Plunger Lift					1 7/8		
2/28/2020		Cast Iron Bridge Plug w/ 2 SX Cement					4	6,725.0	6,755.0
3/2/2020		Cast Iron Bridge Plug w/ 2 SX Cement					4	4,120.0	4,150.0
Logs									
Date		Type				Top, MD (ftKB)		Btm, MD (ftKB)	
5/5/2006		Compensated Density				2,200.0		7,215.0	
5/5/2006		Induction				820.0		7,235.0	
5/9/2006		CBL/CCL/GR				3,200.0		7,180.0	
8/17/2017		GYRO				0.0		6,950.0	
Plug Back Total Depths									
Date		Type		Com				Depth (ftKB)	
10/16/2008		FILL						6,824.0	
10/17/2008		FILL						7,130.0	