

PIPE RECOVERY SERVICES

**Cement Bond Log
Gamma Ray CCL**

Company Laramie Energy LLC
Well Hells Gulch Fed 35-01W
Field Alkali Creek
County Mesa
State COLORADO

Company Laramie Energy LLC
Well Hells Gulch Fed 35-01W
Field Alkali Creek
County Mesa State COLORADO

Location: API #: 05077093060000
LAT: 39.32834 N
LONG: 107.63516 W
SEC 26 TWP 8S RGE 92W
Permanent Datum Elevation
Log Measured From KB
Drilling Measured From

Other Services
Elevation
K.B. 7999
D.F.
G.L. 7985

Date	09-September-2020
Run Number	1
Depth Driller	8594 FT
Depth Logger	4528 FT
Bottom Logged Interval	4528 FT
Top Log Interval	
Casing Driller	
Casing Logger	
Bit Size	
Type Fluid in Hole	WATER
Density / Viscosity	
pH / Fluid Loss	
Source of Sample	
Rm @ Meas. Temp	
Rmf @ Meas. Temp	
Rmc @ Meas. Temp	
Source of Rmf / Rmc	
Rm @ BHT	
Time Circulation Stopped	
Time Logger on Bottom	10:15 AM
Maximum Recorded Temperature	
Equipment Number	ONE
Location	
Recorded By	Ben Resz
Witnessed By	John Grubich

<<< Fold Here >>>

All interpretations are opinions based on inferences from electrical or other measurements and we cannot and do not guarantee the accuracy or correctness of any interpretation, and we shall not, except in the case of gross or willful negligence on our part, be liable or responsible for any loss, costs, damages, or expenses incurred or sustained by anyone resulting from any interpretation made by any of our officers, agents or employees. These interpretations are also subject to our general terms and conditions set out in our current Price Schedule.

Comments

--

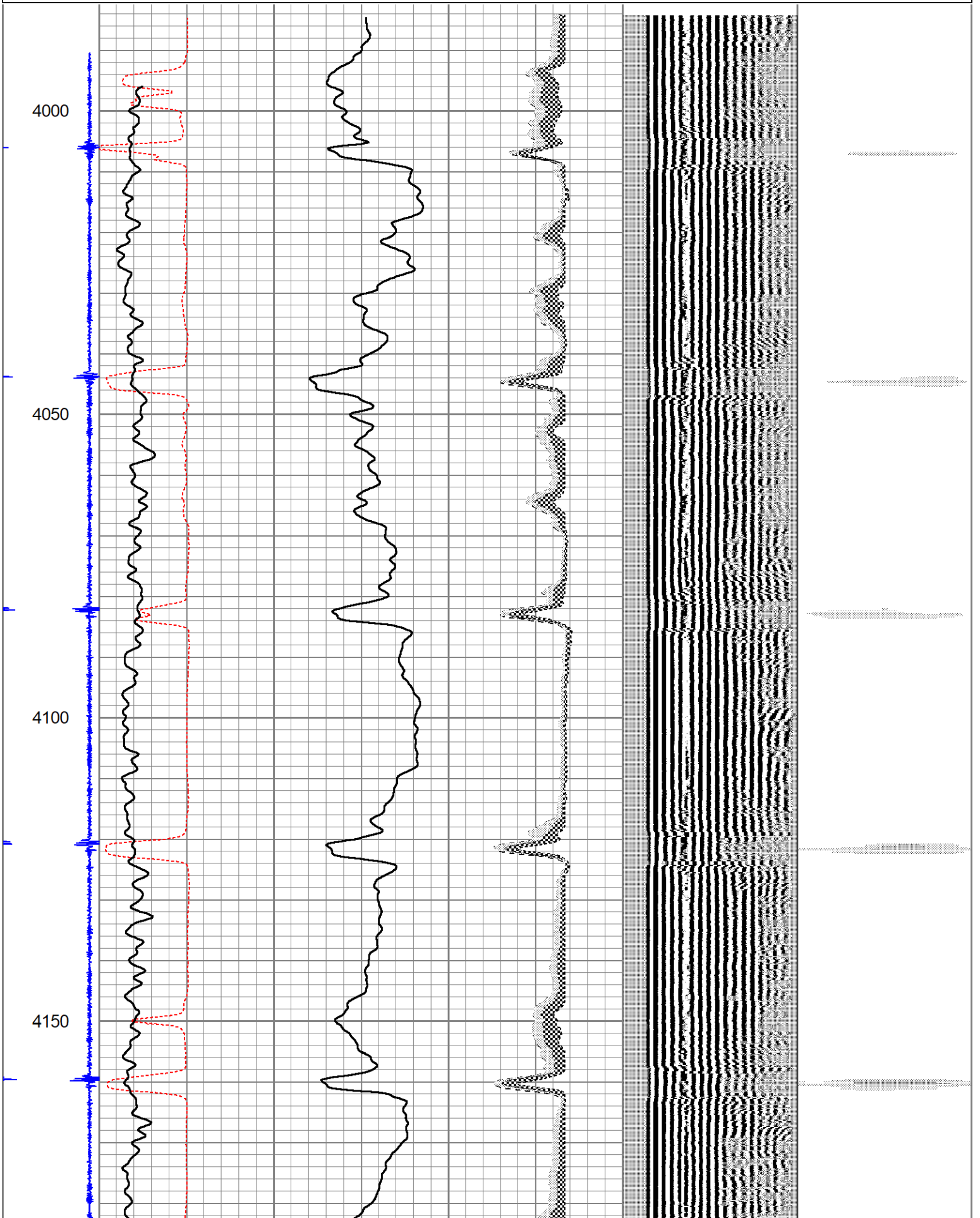
Sensor	Offset (ft)	Schematic	Description	Length (ft)	O.D. (in)	Weight (lb)
			CHD-SDSCHD Cable Head for Testing	1.00	1.69	10.00

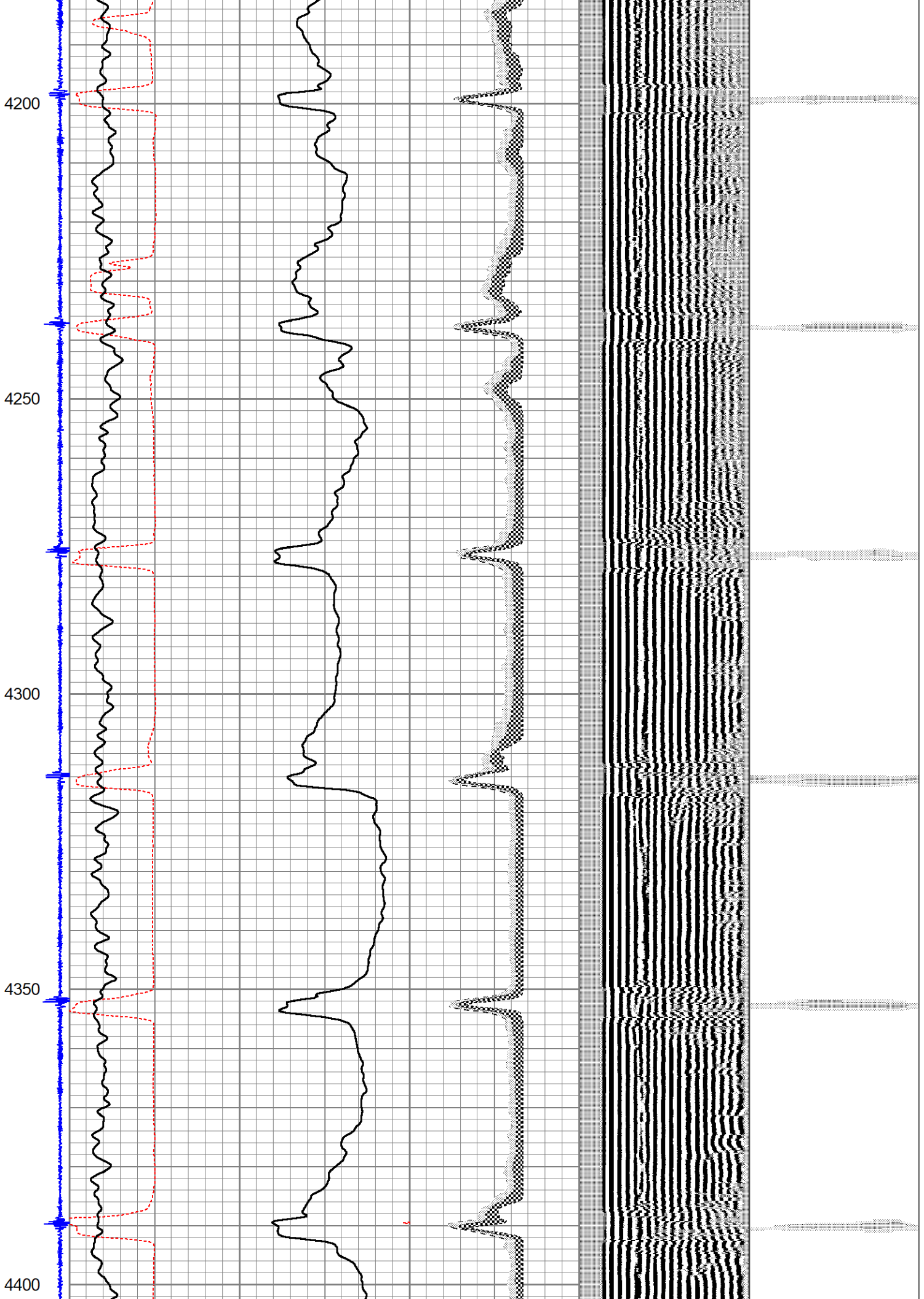
			CENT-SDSCENT Centralizer	2.17	1.69	20.00
TEMP	13.83					
WVFS8	12.00					
WVFS7	12.00		275CTEKSECWTWSLCANS-275RIB (1234) 2 3/4" (R.I.B.) TOOL 3FT, 5FT and 8EA RIB SIGNALS 400 DEG "F" @20K PSI With Sliding Cans For Pressure Ballance	9.54	2.75	102.00
WVFS6	12.00					
WVFS5	12.00					
WVFS4	12.00					
WVFS3	12.00					
WVFS2	12.00					
WVFS1	12.00					
WVFSYNC	11.25					
WVFCAL	11.25					
WVF3FT	11.25					
WVF5FT	10.25					
WVFTEMP	6.92					
			CENT-SDSCENT Centralizer	2.17	1.69	20.00
CCL	3.92					
			GR-Probe275dig (pr050806) Probe Digital Gamma CCL(new)	4.75	2.75	57.00
GR	0.71					

Dataset: 9-30-20laramie.db: John/HGFed35-01W/run1/pass10
 Total length: 19.63 ft
 Total weight: 209.00 lb
 O.D.: 2.75 in

Database File 9-30-20laramie.db
 Dataset Pathname John/HGFed35-01W/run1/pass10
 Presentation Format newrcbl
 Dataset Creation Wed Sep 30 10:37:28 2020
 Charted by Depth in Foot scaled 1:240

-9	CCL	1	270	TT (usec)	170	0	AMP (mV)	100	0	AMPAVG	150	200	VDL (usec)	1200	1	VAD	8
			0	GR (GAPI)	120	0	AMPx5 (mV)	20	0	AMPMAX	150						
									0	AMPMIN	150						





4450

4500

-9	CCL	1	270	TT (usec)	170	0	AMP (mV)	100	0	AMPAVG	150	200	VDL (usec)	1200	1	VAD	8
			0	GR (GAPI)	120	0	AMPx5 (mV)	20	0	AMPMAX	150						
									0	AMPMIN	150						