



# Bayswater Exploration & Production, LLC

East Ault 16-18-19HNA

API # 05-123-47072

Surface

April 25, 2020

Quote #: QUO-44902-B1G4Q2

Execution #: EXC-25925-S6F1W802



# Bayswater Exploration & Production, LLC

Attention: Mr. Trevor Smith | (720) 335-9045 | [trevor.smith@iptenergyservices.com](mailto:trevor.smith@iptenergyservices.com)

Bayswater Exploration & Production | 730 17th Street, Suite 610 | Denver, CO. 80202

---

Dear Mr. Trevor Smith,

Thank you for the opportunity to provide cementing services on this well. BJ Services strives to achieve complete customer satisfaction. If you have any questions regarding the services or data provided, please contact BJ Services at any time.

Sincerely,  
Jason Creel  
Field Engineer I | (307) 365-9038 | [jason.creel@bjservices.com](mailto:jason.creel@bjservices.com)

Field Office 1716 East Allison Rd., Cheyenne WY, 82007  
Phone: (307) 459-6487

Sales Office 999 18th St. Suite 1200 Denver, CO 80202  
Phone: (281) 408-2361

---

# BJ Cementing Treatment Report

SERVICE SUPERVISOR	Eric Dewit	RIG	True 38
CLIENT FIELD REPRESENTATIVE	Spike	COUNTY	WELD
DISTRICT	Cheyenne, WY	STATE / PROVINCE	CO
SERVICE	Cementing		

## WELL GEOMETRY

TYPE	ID (in)	OD (in)	WEIGHT (lbs/ft)	MD (ft)	TVD (ft)	EXCESS (%)
Open Hole	13.50	0.00	0.00	1,556.00	1,556.00	25.00
Casing	8.92	9.63	36.00	1,556.00	1,556.00	

## HARDWARE

Bottom Plug Used?	No	Tool Type	Float Collar
Top Plug Used?	Yes	Tool Depth (ft)	1,514.00
Top Plug Provided By	Non BJ	Max Casing Pressure - Rated (psi)	2,816.00
Top Plug Size	9.625	Max Casing Pressure - Operated (psi)	1,500.00
Centralizers Used	Yes	Pipe Movement	None
Centralizers Type	Bow	Job Pumped Through	Manifold
Landing Collar Depth (ft)	1,514	Top Connection Thread	LTC
		Top Connection Size	9.625

## CIRCULATION PRIOR TO JOB

Well Circulated By	Rig	Mud Density In (ppg)	8.40
Circulation Prior to Job	Yes	Mud Density Out (ppg)	8.40
Circulation Time (min)	45.00	Solids Present at End of Circulation	No
Circulation Rate (bpm)	8.00	Flare Prior to / during the Cement Job	No
Circulation Volume (bbls)	360.00	Gas Present	No
Lost Circulation Prior to Cement Job	No		

## TEMPERATURE

Ambient Temperature (°F)	51.00	Slurry Cement Temperature (°F)	56.00
Mix Water Temperature (°F)	55.00		

Client: Bayswater Exploration & Production, LLC

Well: EAST AULT 16-18-19HNA

Well API: 05-123-47072

Start Date: 4/24/2020

End Date: 4/25/2020

Field Ticket #: FT-25925-S6F1W80201-1437446382



## FLUID DETAILS

FLUID TYPE	FLUID NAME	DENSITY (ppg)	YIELD (Cu Ft/sk)	H <sub>2</sub> O REQ. (gals/sk)	PLN TOP FLD (ft)	LENGTH (ft)	VOL (sk)	VOL (Cu Ft)	VOL (bbls)
Spacer / Pre Flush / Flush	Water	8.3337			0.00				20.0000
Tail Slurry	BJCem S100.03.1C	14.2000	1.4614	7.34	0.00	1,530.00	650	950.0000	169.2000
Displacement Final	Water	8.3337			0.00			0.0000	115.0000

FLUID TYPE	FLUID NAME	COMPONENT	CONCENTRATION	UOM
Spacer / Pre Flush / Flush	Water	Fresh Water	100.0000	PCT
Tail Slurry	BJCem S100.03.1C	CEMENT, ASTM TYPE III	100.0000	PCT
Displacement Final	Water	Fresh Water	100.0000	PCT
Displacement Final	Water	ResCare CS-2	0.0800	GPB
Displacement Final	Water	BIOCIDE, BIOC11139W	0.0100	GPB
Displacement Final	Water	CORROSION INHIBITORS, CI-27	0.2100	GPB
Displacement Final	Water	OXYGEN SCAVENGER, OS-30	0.1680	GPB

## DISPLACEMENT AND END OF JOB SUMMARY

Displaced By	BJ	Amt of Cement Returned / Reversed	30.00
Calculated Displacement Vol (bbls)	117.00	Method Used to Verify Returns	Visual
Actual Displacement Vol (bbls)	117.00	Amt of Spacer to Surface	20.00
Did Float Hold?	Yes	Pressure Left on Casing (psi)	0.00
Bump Plug	Yes	Amt Bled Back After Job	1.00
Bump Plug Pressure (psi)	1,250.00	Total Volume Pumped (bbls)	306.00
Were Returns Planned at Surface	Yes	Top Out Cement Spotted	No
Cement Returns During Job	Full	Lost Circulation During Cement Job	No

Client: Bayswater Exploration & Production, LLC

Well: EAST AULT 16-18-19HNA

Well API: 05-123-47072

Start Date: 4/24/2020

End Date: 4/25/2020

Field Ticket #: FT-25925-S6F1W80201-1437446382



# BJ Cementing Event Log

Surface - Cheyenne, WY - Eric Dewit

SEQ	START DATE / TIME	EVENT	DENSITY (ppg)	PUMP RATE (bpm)	PUMP VOL (bbls)	PIPE PRESSURE (psi)	COMMENTS
1	04/24/2020 12:00	Callout					Customer calls with an O/L time of 17:30 on 2/24/20 Crew get equipment, and materials ready to travel to location
2	04/24/2020 16:00	Depart for Location					Depart yard to travel to location
3	04/24/2020 17:00	Arrive on Location					Arrive on location, rig is coming out of the hole with drill pipe
4	04/24/2020 17:00	STEACS Briefing					Pre-rig up safety meeting, before spotting trucks
5	04/24/2020 17:10	Spot Units					Spot trucks
6	04/24/2020 17:15	Rig Up					Rig up water, bulk, and treating line to the cat walk
7	04/24/2020 17:35	Rig					Waiting on rig to run casing
8	04/24/2020 21:40	Rig Up					Casing on bottom, rig up line to the rig floor, and cement head for the rig to circulate through
9	04/24/2020 22:15	STEACS Briefing					Pre-job safety meeting with BJ crew, rig crew, and company man
10	04/24/2020 22:30	Rig					Waiting on rig to finish circulating
11	04/24/2020 22:50	Rig Up					Rig up treating line to the cement head
12	04/24/2020 22:55	Other (See comment)	8.3400	3.00	5.00	50.00	Load lines with 5 bbls of fresh water
13	04/24/2020 22:58	Pressure Test	8.3400			2700.00	Test pumps and lines
14	04/24/2020 23:00	Pump Spacer	8.3400	3.00	15.00	60.00	Pump 15 more bbls of fresh water ahead for a total of 20 bbls ahead
15	04/24/2020 23:05	Pumping Cement	14.2000	5.30		200.00	Pump 650 sks of cement @14.2 ppg from Bulk trucks CTF-578 (both pods) and CTF-006 (Both pods)
16	04/24/2020 23:22	Pumping Cement	14.2000	4.50	82.00	200.00	Drop rate due to rig pump having issues keeping up
17	04/24/2020 23:27	Pumping Cement	14.2000	5.10	107.00	191.00	Able to bring rate back up to 5.1 bbls per min
18	04/24/2020 23:42	Drop Top Plug	14.2000		169.00		Shut down and drop plug

Client Name: Bayswater Exploration & Production, LLC

Quote #: QUO-44902-B1G4Q2

Well Name / API : EAST AULT  
16-18-19HNA / 05-123-47072

Plan #: ORD-25925-S6F1W8

Well MD:1,556.00

Execution #: EXC-25925-S6F1W802



19	04/24/2020 23:46	Pump Displacement	8.3400	6.50		200.00	Send plug and start fresh water + Chems displacement
20	04/24/2020 23:57	Pump Displacement	8.3400	6.50	50.00	300.00	
21	04/25/2020 00:02	Cement Back-to-Surface	8.3400	6.50	87.00	600.00	Start getting good cement to surface (30 bbls cement to surface)
22	04/25/2020 00:05	Pump Displacement	8.3400	3.00	100.00	600.00	Drop rate to land the plug
23	04/25/2020 00:10	Land Plug	8.3400	3.00	117.00	1250.00	Land plug (final circulating pressure was 750 psi)
24	04/25/2020 00:15	Check Floats	8.3400				Floats held (1 bbl back)
25	04/25/2020 00:18	STEACS Briefing					Pre-rig down safety meeting
26	04/25/2020 00:26	Rig Down					Rig down

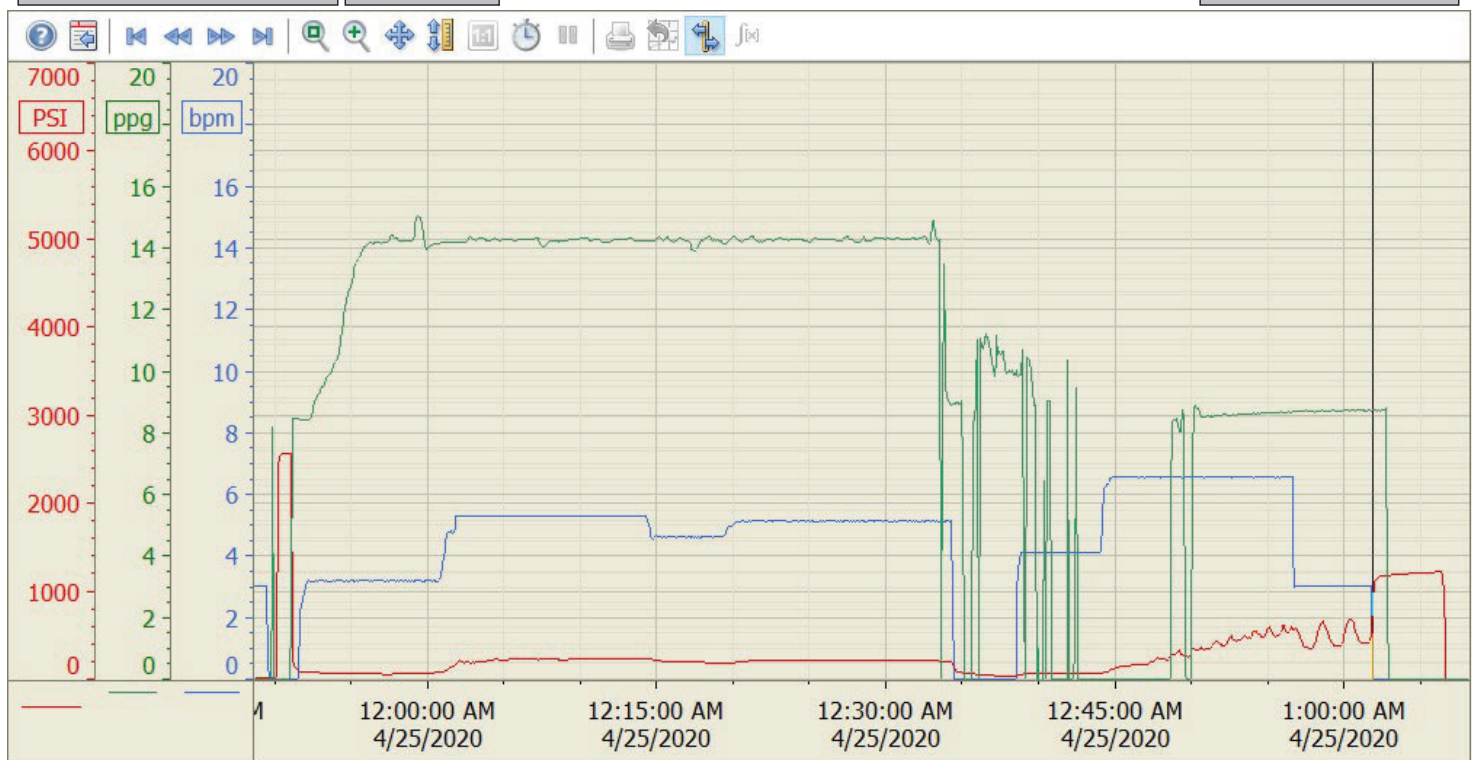
# Summary Trend

BAYSWATER

EAST AULT



Lease: 16-18-19 HNA



4/25/2020 1:26:32 AM