



# Bayswater Exploration & Production, LLC

East Ault 15-18-19HNC

API # 05-123-47073

Surface

April 25, 2020

Quote #: QUO-44903-C6Z1V7

Execution #: EXC-25926-J5P4G902



# Bayswater Exploration & Production, LLC

Attention: Mr. Trevor Smith | (720) 335-9045 | [trevor.smith@iptenergyservices.com](mailto:trevor.smith@iptenergyservices.com)

Bayswater Exploration & Production | 730 17th Street, Suite 610 | Denver, CO. 80202

---

Dear Mr. Trevor Smith,

Thank you for the opportunity to provide cementing services on this well. BJ Services strives to achieve complete customer satisfaction. If you have any questions regarding the services or data provided, please contact BJ Services at any time.

Sincerely,  
Jason Creel  
Field Engineer I | (307) 365-9038 | [jason.creel@bjsservices.com](mailto:jason.creel@bjsservices.com)

Field Office 1716 East Allison Rd., Cheyenne WY, 82007  
Phone: (307) 459-6487

Sales Office 999 18th St. Suite 1200 Denver, CO 80202  
Phone: (281) 408-2361

---

# BJ Cementing Treatment Report

SERVICE SUPERVISOR	Richard White	RIG	True 38
DISTRICT	Cheyenne, WY	COUNTY	WELD
SERVICE	Cementing	STATE / PROVINCE	CO

## WELL GEOMETRY

TYPE	ID (in)	OD (in)	WEIGHT (lb/ft)	MD (ft)	TVD (ft)	EXCESS (%)
Casing	8.92	9.63	36.00	1,530.00	1,530.00	
Open Hole	13.50			1,530.00	1,530.00	25.00

## HARDWARE

Bottom Plug Used?	No	Tool Depth (ft)	1,503.00
Top Plug Used?	Yes	Max Casing Pressure - Rated (psi)	3520.00
Top Plug Provided By	Non BJ	Max Casing Pressure - Operated (psi)	1500.00
Top Plug Size	9.625	Pipe Movement	None
Centralizers Used	Yes	Job Pumped Through	Manifold
Centralizers Type	Rigid	Top Connection Thread	8rd
Landing Collar Depth (ft)	1,503	Top Connection Size	9.625
Tool Type	Float Collar		

## CIRCULATION PRIOR TO JOB

Well Circulated By	Rig	Mud Density In (ppg)	8.40
Circulation Prior to Job	Yes	Mud Density Out (ppg)	8.40
Circulation Time (min)	30.00	Solids Present at End of Circulation	No
Circulation Rate (bpm)	14.40	Flare Prior to / during the Cement Job	No
Circulation Volume (bbls)	432.00	Gas Present	No
Lost Circulation Prior to Cement Job	No		

## TEMPERATURE

Ambient Temperature (°F)	65.00	Slurry Cement Temperature (°F)	65.00
Mix Water Temperature (°F)	65.00	Flow Line Temperature (°F)	65.00

## FLUID DETAILS

FLUID TYPE	FLUID NAME	DENSITY (ppg)	YIELD (Cu Ft/sk)	H <sub>2</sub> O REQ (gals/sk)	PLN TOP FLD (ft)	LENGTH (ft)	VOL (sk)	VOL (Cu Ft)	VOL (bbls)
Spacer / Pre Flush / Flush	Water	8.3337			0.00				20.0000
Tail Slurry	BJCem S100.03.1C	14.2000	1.4614	7.34	0.00	1,530.00	650	950.0000	169.2000
Displacement Final	Water	8.3337			0.00			0.0000	116.5000

FLUID TYPE	FLUID NAME	COMPONENT	CONCENTRATION	UOM
Spacer / Pre Flush / Flush	Water	Fresh Water	100.0000	PCT
Tail Slurry	BJCem S100.03.1C	CEMENT, ASTM TYPE III	100.0000	PCT
Displacement Final	Water	OXYGEN SCAVENGER, OS-30	0.1680	GPB
Displacement Final	Water	CORROSION INHIBITORS, CI-27	0.2100	GPB
Displacement Final	Water	ResCare CS-2	0.0800	GPB
Displacement Final	Water	BIOCIDE, BIOC11139W	0.0100	GPB
Displacement Final	Water	Fresh Water	100.0000	PCT

## DISPLACEMENT AND END OF JOB SUMMARY

Displaced By	BJ	Amt of Cement Returned / Reversed	32.00
Calculated Displacement Vol (bbls)	116.50	Method Used to Verify Returns	Visual
Actual Displacement Vol (bbls)	116.50	Amt of Spacer to Surface	20.00
Did Float Hold?	Yes	Pressure Left on Casing (psi)	0.00
Bump Plug	Yes	Amt Bled Back After Job	0.75
Bump Plug Pressure (psi)	700.00	Total Volume Pumped (bbls)	310.00
Were Returns Planned at Surface	Yes	Top Out Cement Spotted	No
Cement Returns During Job	Full	Lost Circulation During Cement Job	No

# BJ Cementing Event Log

Surface - Cheyenne, WY - Richard White

SEQ	START DATE / TIME	EVENT	DENSITY (ppg)	PUMP RATE (bpm)	PUMP VOL (bbls)	PIPE PRESSURE (psi)	COMMENTS
1	04/25/2020 10:21	Callout					Crew called out, checked and verified equipment and materials
2	04/25/2020 12:21	Depart for Location					Leave for location
3	04/25/2020 13:00	Arrive on Location					Arrive at location
4	04/25/2020 13:05	STEACS Briefing					Pre-spot and rig up safety meeting
5	04/25/2020 13:13	Rig Up					Rig up treating equipment
6	04/25/2020 14:30	Other (See comment)					Wait for rig to finish running casing and circulating
7	04/25/2020 17:00	STEACS Briefing					Safety meeting with rig crew and customer
8	04/25/2020 17:27	Prime Up	8.3300	3.00	5.00	50.00	Fill lines with 5 bbl water
9	04/25/2020 17:30	Pressure Test					Test lines to 3500 psi
10	04/25/2020 17:36	Pump Spacer	8.3300	4.00	20.00	200.00	Pump 20 bbl fresh water spacer with blue dye
11	04/25/2020 17:41	Other (See comment)					Shutdown had delivery issues on pump
12	04/25/2020 17:45	Pumping Cement	14.2000	6.00	84.60	350.00	Pump 84.6 bbl cmt@14.2ppg 325 sks 1.4614y 7.34gps from tier 2 of ctf-014 wet and dry samples taken and verified
13	04/25/2020 17:59	Pumping Cement	14.2000	6.00	84.60	350.00	Pump 84.6 bbl cmt@14.2ppg 325 sks 1.4614y 7.34gps from tier 1 of ctf-014 wet and dry samples taken and verified
14	04/25/2020 18:14	Pumping Cement					Slowed rate 3.5 bpm to finish product from bulk unit
15	04/25/2020 18:17	Pumping Cement	14.2000		169.20		Pump a total of 169.2 bbl cmt@14.2ppg 650sks 1.4614y 7.34gps
16	04/25/2020 18:18	Drop Top Plug					Drop Top Plug
17	04/25/2020 18:21	Pump Displacement	8.3300	7.50	105.00	300.00	Pump 105bbl disp. Got 32 bbl cmt to surface
18	04/25/2020 18:40	Pump Displacement	8.3300	3.00	11.50	400.00	Pump 11.6 bbl. Disp.
19	04/25/2020 18:43	Pump Displacement			116.50		Pump a total disp. Of 116.5bbl with bio-cide, rescare, os-30, and cl-27
20	04/25/2020 18:44	Land Plug				1500.00	Land plug @ 700 psi took to 1500 psi
21	04/25/2020 18:50	Check Floats					Floats held 0.75 bbl back

Client: Bayswater Exploration & Production, LLC

Well Name / API: EAST AULT 15-18-19HNC / 05-123-47073

Well 1530  
MD:



Quote #: QUO-44903-C6Z1V7

Plan #: ORD-25926-J5P4G9

Execution #: EXC-25926-J5P4G902

22	04/25/2020 18:55	STEACS Briefing					Pre rig down safety meeting
23	04/25/2020 19:00	Rig Down					Rig down all treating equipment
24	04/25/2020 19:20	Leave Location					Depart location

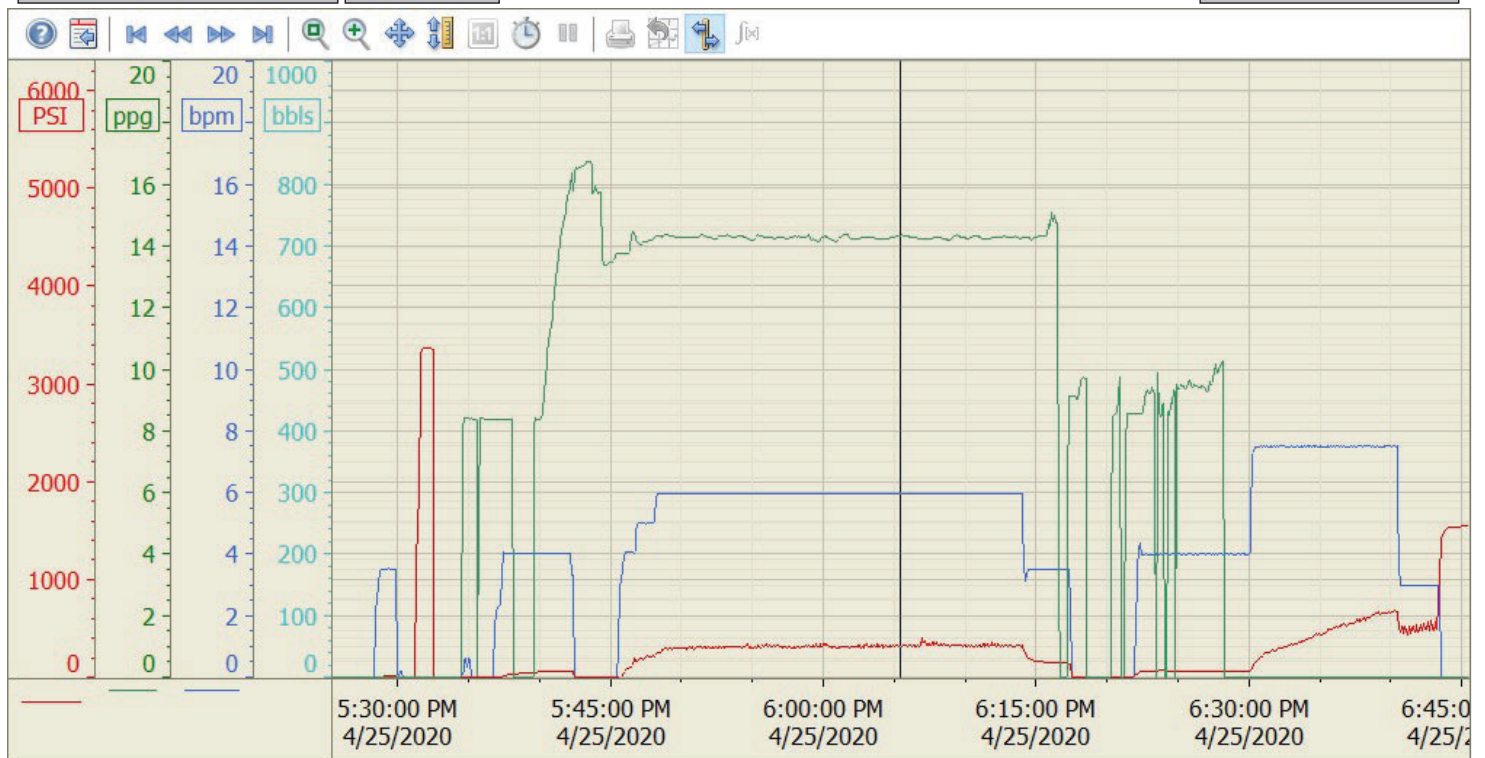
## Summary Trend

Bayswater

15-18-19HNC



Lease: East Ault



4/25/2020 7:08:24 PM