

Bayswater Exploration & Production, LLC

Well Name: **East Ault 14-18-19HNB**

Surface Location: East Ault 18-C Pad Sec.18-T7N-R65W

North American Datum 1983 , US State Plane 1983, Colorado Northern Zone

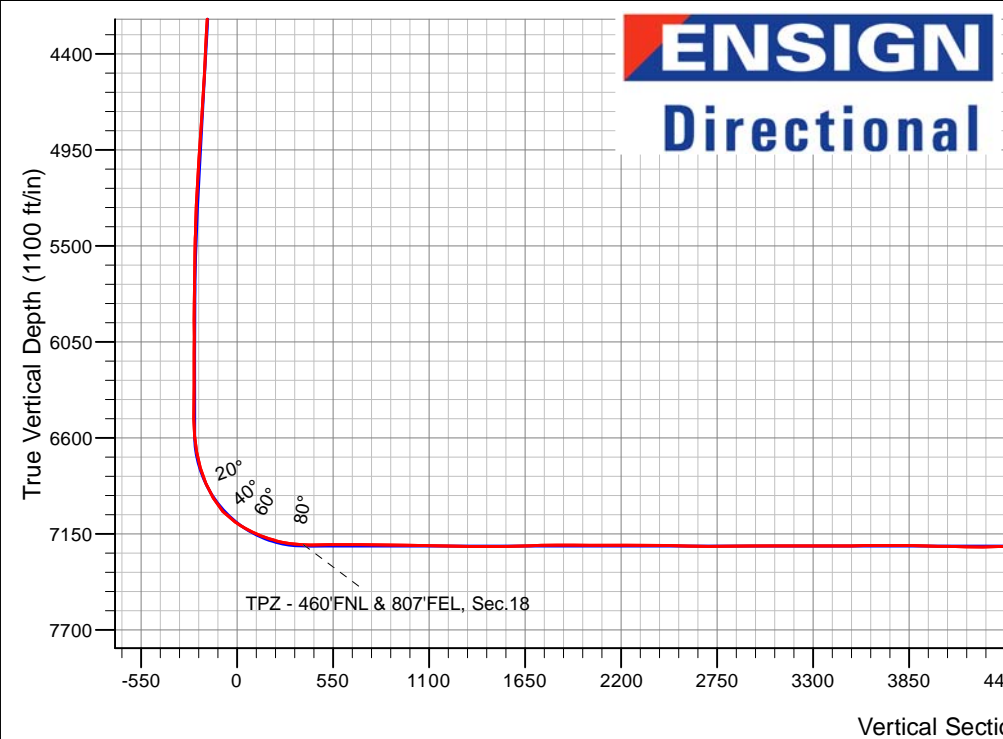
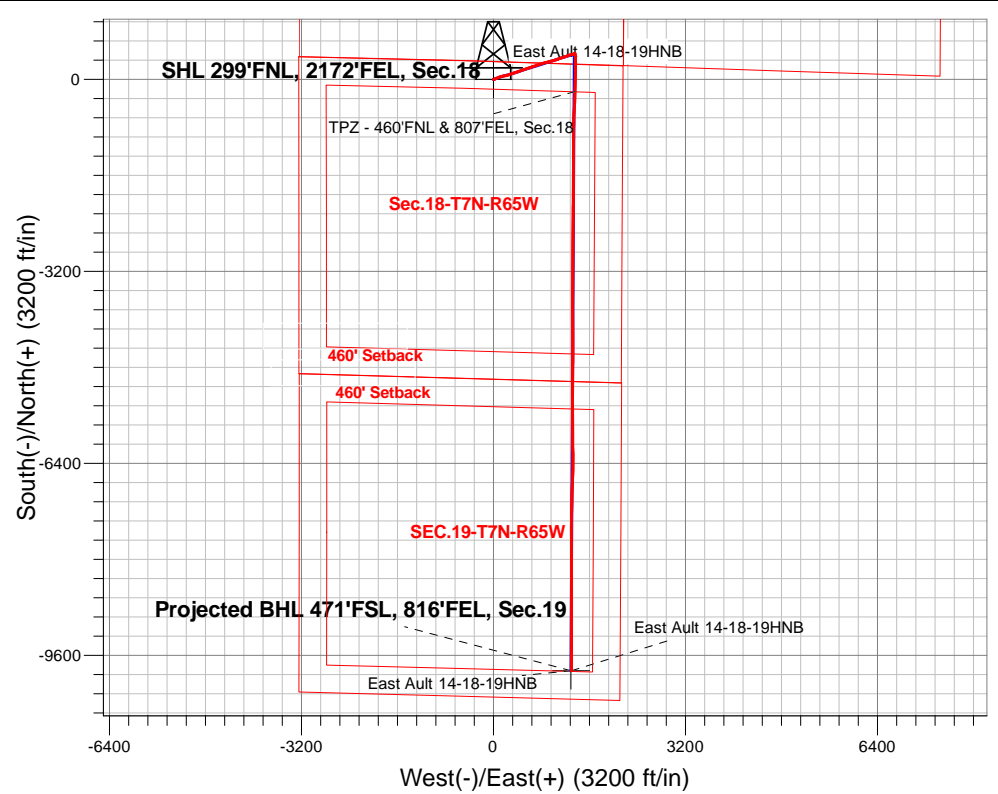
Ground Elevation: 4909.0

+N/-S	+E/-W	Northing	Easting	Latitude	Longitude	Slot
0.0	0.0	1455735.04	3221033.02	40.581669	-104.704231	

Original Well Elev WELL @ 4934.0ft (Original Well Elev)

FINAL SURVEY

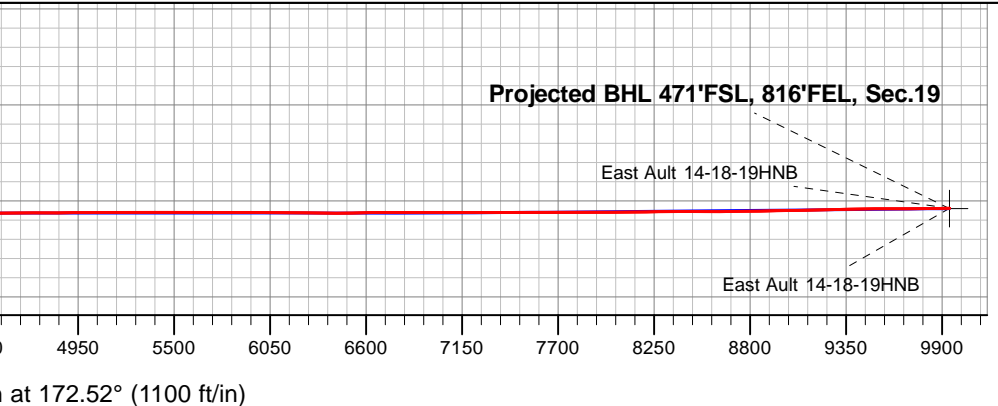
Projected Bottom Hole Location
17,428'MD 7192'TVD 9857'S & 1304'E of SHL
90.92 degree Incl @ 180.06 degree AZM



East Ault 18-C Pad Sec.18-T7N-R65W
 East Ault 14-18-19HNB
 East Ault 14-18-19HNB Wellbore #1
 10:39, August 04 2020

ANNOTATIONS		
TVD	MD	Annotation
7211.1	7772.7	TPZ - 460'FNL & 807'FEL, Sec.18

LEGEND	
	East Ault 14-18-19HNB, East Ault 14-18-19HNB Wellbore #1, Plan #4 (7-24-20) V0
	East Ault 14-18-19HNB Wellbore #1 Survey #1





Bayswater Exploration & Production, LLC

SEC.18-T7N-R65W

East Ault 18-C Pad Sec.18-T7N-R65W

East Ault 14-18-19HNB

East Ault 14-18-19HNB Wellbore #1

Survey: Survey #1

Standard Survey Report

04 August, 2020



Company:	Bayswater Exploration & Production, LLC	Local Co-ordinate Reference:	Well East Ault 14-18-19HNB
Project:	SEC.18-T7N-R65W	TVD Reference:	WELL @ 4934.0ft (Original Well Elev)
Site:	East Ault 18-C Pad Sec.18-T7N-R65W	MD Reference:	WELL @ 4934.0ft (Original Well Elev)
Well:	East Ault 14-18-19HNB	North Reference:	True
Wellbore:	East Ault 14-18-19HNB Wellbore #1	Survey Calculation Method:	Minimum Curvature
Design:	East Ault 14-18-19HNB Wellbore #1	Database:	US_EDM

Project	SEC.18-T7N-R65W, Weld County, CO		
Map System:	US State Plane 1983	System Datum:	Mean Sea Level
Geo Datum:	North American Datum 1983		Using Well Reference Point
Map Zone:	Colorado Northern Zone		Using geodetic scale factor

Site	East Ault 18-C Pad Sec.18-T7N-R65W				
Site Position:		Northing:	1,455,737.31 usft	Latitude:	40.581680
From:	Lat/Long	Easting:	3,220,838.00 usft	Longitude:	-104.704933
Position Uncertainty:	0.0 ft	Slot Radius:	13-3/16 "	Grid Convergence:	0.51 °

Well	East Ault 14-18-19HNB					
Well Position	+N/-S	0.0 ft	Northing:	1,455,735.04 usft	Latitude:	40.581669
	+E/-W	0.0 ft	Easting:	3,221,033.02 usft	Longitude:	-104.704231
Position Uncertainty		0.0 ft	Wellhead Elevation:	0.0 ft	Ground Level:	4,909.0 ft

Wellbore	East Ault 14-18-19HNB Wellbore #1				
Magnetics	Model Name	Sample Date	Declination (°)	Dip Angle (°)	Field Strength (nT)
	HDGM	07/24/2019	7.97	66.93	52,241

Design	East Ault 14-18-19HNB Wellbore #1				
Audit Notes:					
Version:	1.0	Phase:	ACTUAL	Tie On Depth:	0.0
Vertical Section:	Depth From (TVD) (ft)	+N/-S (ft)	+E/-W (ft)	Direction (°)	
	0.0	0.0	0.0	172.52	

Survey Program	Date	08/04/2020			
From (ft)	To (ft)	Survey (Wellbore)	Tool Name	Description	
216.0	17,428.0	Survey #1 (East Ault 14-18-19HNB Wellbo	MWD	MWD - Standard	

Measured Depth (ft)	Inclination (°)	Azimuth (°)	Vertical Depth (ft)	+N/-S (ft)	+E/-W (ft)	Vertical Section (ft)	Dogleg Rate (°/100usft)	Build Rate (°/100usft)	Turn Rate (°/100usft)
0.0	0.00	0.00	0.0	0.0	0.0	0.0	0.00	0.00	0.00
216.0	0.53	150.50	216.0	-0.9	0.5	0.9	0.25	0.25	0.00
310.0	0.88	135.04	310.0	-1.8	1.2	1.9	0.42	0.37	-16.45
404.0	0.88	139.96	404.0	-2.8	2.2	3.1	0.08	0.00	5.23
499.0	1.58	106.03	499.0	-3.7	3.9	4.2	1.03	0.74	-35.72
593.0	3.78	70.00	592.9	-3.0	8.1	4.1	2.84	2.34	-38.33
687.0	5.19	65.95	686.6	-0.2	14.9	2.2	1.54	1.50	-4.31
782.0	6.33	64.37	781.1	3.8	23.5	-0.7	1.21	1.20	-1.66
876.0	8.53	68.59	874.3	8.6	34.7	-4.0	2.41	2.34	4.49
971.0	9.85	67.71	968.1	14.2	48.8	-7.7	1.40	1.39	-0.93

Company:	Bayswater Exploration & Production, LLC	Local Co-ordinate Reference:	Well East Ault 14-18-19HNB
Project:	SEC.18-T7N-R65W	TVD Reference:	WELL @ 4934.0ft (Original Well Elev)
Site:	East Ault 18-C Pad Sec.18-T7N-R65W	MD Reference:	WELL @ 4934.0ft (Original Well Elev)
Well:	East Ault 14-18-19HNB	North Reference:	True
Wellbore:	East Ault 14-18-19HNB Wellbore #1	Survey Calculation Method:	Minimum Curvature
Design:	East Ault 14-18-19HNB Wellbore #1	Database:	US_EDM

Survey										
Measured Depth (ft)	Inclination (°)	Azimuth (°)	Vertical Depth (ft)	+N/-S (ft)	+E/-W (ft)	Vertical Section (ft)	Dogleg Rate (°/100usft)	Build Rate (°/100usft)	Turn Rate (°/100usft)	
1,066.0	10.38	66.13	1,061.6	20.8	64.1	-12.2	0.63	0.56	-1.66	
1,160.0	11.43	65.60	1,153.9	28.0	80.3	-17.3	1.12	1.12	-0.56	
1,255.0	11.52	65.78	1,247.0	35.8	97.6	-22.8	0.10	0.09	0.19	
1,350.0	12.40	73.51	1,339.9	42.6	116.0	-27.1	1.92	0.93	8.14	
1,444.0	14.16	77.56	1,431.4	47.9	136.9	-29.7	2.12	1.87	4.31	
1,504.0	13.72	79.49	1,489.7	50.8	151.1	-30.7	1.07	-0.73	3.22	
1,568.0	13.37	78.81	1,551.9	53.6	165.8	-31.6	0.60	-0.55	-1.06	
1,662.0	14.51	81.80	1,643.1	57.4	188.1	-32.5	1.43	1.21	3.18	
1,756.0	15.30	76.52	1,733.9	62.0	211.8	-33.9	1.67	0.84	-5.62	
1,851.0	16.00	74.94	1,825.4	68.3	236.6	-36.9	0.86	0.74	-1.66	
1,945.0	17.85	71.60	1,915.4	76.2	262.8	-41.4	2.22	1.97	-3.55	
2,039.0	17.06	70.55	2,005.0	85.4	289.5	-47.0	0.90	-0.84	-1.12	
2,133.0	18.11	71.08	2,094.6	94.7	316.3	-52.7	1.13	1.12	0.56	
2,228.0	17.76	70.90	2,185.0	104.2	344.0	-58.6	0.37	-0.37	-0.19	
2,323.0	17.59	70.90	2,275.5	113.7	371.2	-64.4	0.18	-0.18	0.00	
2,416.0	17.15	71.43	2,364.3	122.6	397.5	-69.8	0.50	-0.47	0.57	
2,511.0	17.23	70.90	2,455.0	131.7	424.1	-75.4	0.19	0.08	-0.56	
2,605.0	16.44	69.49	2,545.0	140.9	449.7	-81.2	0.95	-0.84	-1.50	
2,700.0	17.94	72.31	2,635.8	150.1	476.2	-86.8	1.81	1.58	2.97	
2,795.0	17.32	70.37	2,726.3	159.3	503.5	-92.4	0.90	-0.65	-2.04	
2,889.0	17.76	72.31	2,815.9	168.3	530.3	-97.8	0.78	0.47	2.06	
3,007.0	17.67	72.48	2,928.3	179.2	564.6	-104.2	0.09	-0.08	0.14	
3,101.0	17.06	71.43	3,018.1	187.9	591.2	-109.3	0.73	-0.65	-1.12	
3,195.0	17.50	71.60	3,107.8	196.7	617.7	-114.6	0.47	0.47	0.18	
3,290.0	17.67	71.25	3,198.4	205.9	644.9	-120.2	0.21	0.18	-0.37	
3,384.0	17.59	72.13	3,288.0	214.8	671.9	-125.5	0.30	-0.09	0.94	
3,478.0	16.71	70.37	3,377.8	223.7	698.2	-130.9	1.09	-0.94	-1.87	
3,573.0	17.76	71.08	3,468.5	233.0	724.8	-136.7	1.13	1.11	0.75	
3,668.0	16.27	69.32	3,559.4	242.4	750.9	-142.6	1.66	-1.57	-1.85	
3,762.0	17.85	74.24	3,649.2	251.0	777.1	-147.7	2.28	1.68	5.23	
3,857.0	16.62	71.60	3,740.0	259.2	804.0	-152.3	1.53	-1.29	-2.78	
3,952.0	17.85	75.12	3,830.7	267.2	831.0	-156.8	1.70	1.29	3.71	
4,047.0	18.73	75.29	3,920.9	274.8	859.8	-160.6	0.93	0.93	0.18	
4,141.0	18.73	76.17	4,009.9	282.3	889.1	-164.1	0.30	0.00	0.94	
4,235.0	18.82	74.94	4,098.9	289.8	918.4	-167.8	0.43	0.10	-1.31	
4,330.0	19.08	74.94	4,188.8	297.8	948.1	-171.9	0.27	0.27	0.00	
4,424.0	18.73	74.24	4,277.7	305.9	977.5	-176.1	0.44	-0.37	-0.74	
4,518.0	18.03	74.59	4,366.9	313.9	1,006.1	-180.3	0.75	-0.74	0.37	
4,613.0	16.97	75.65	4,457.5	321.2	1,033.7	-183.9	1.17	-1.12	1.12	
4,707.0	17.76	70.20	4,547.2	329.5	1,060.4	-188.6	1.92	0.84	-5.80	
4,800.0	16.71	67.91	4,636.0	339.3	1,086.2	-195.0	1.34	-1.13	-2.46	
4,895.0	17.67	71.95	4,726.8	348.9	1,112.5	-201.1	1.61	1.01	4.25	
4,990.0	17.06	71.43	4,817.5	357.8	1,139.5	-206.5	0.66	-0.64	-0.55	
5,084.0	18.03	71.60	4,907.1	366.8	1,166.3	-211.9	1.03	1.03	0.18	

Company:	Bayswater Exploration & Production, LLC	Local Co-ordinate Reference:	Well East Ault 14-18-19HNB
Project:	SEC.18-T7N-R65W	TVD Reference:	WELL @ 4934.0ft (Original Well Elev)
Site:	East Ault 18-C Pad Sec.18-T7N-R65W	MD Reference:	WELL @ 4934.0ft (Original Well Elev)
Well:	East Ault 14-18-19HNB	North Reference:	True
Wellbore:	East Ault 14-18-19HNB Wellbore #1	Survey Calculation Method:	Minimum Curvature
Design:	East Ault 14-18-19HNB Wellbore #1	Database:	US_EDM

Survey										
Measured Depth (ft)	Inclination (°)	Azimuth (°)	Vertical Depth (ft)	+N/-S (ft)	+E/-W (ft)	Vertical Section (ft)	Dogleg Rate (°/100usft)	Build Rate (°/100usft)	Turn Rate (°/100usft)	
5,179.0	16.80	71.08	4,997.7	375.9	1,193.3	-217.4	1.31	-1.29	-0.55	
5,274.0	15.83	69.85	5,088.9	384.8	1,218.4	-222.9	1.08	-1.02	-1.29	
5,368.0	14.86	70.02	5,179.6	393.4	1,241.8	-228.4	1.03	-1.03	0.18	
5,463.0	14.60	69.32	5,271.4	401.8	1,264.4	-233.7	0.33	-0.27	-0.74	
5,558.0	12.66	75.82	5,363.8	408.5	1,285.7	-237.7	2.60	-2.04	6.84	
5,651.0	10.20	77.05	5,454.9	412.9	1,303.6	-239.6	2.66	-2.65	1.32	
5,746.0	9.32	74.42	5,548.5	416.8	1,319.3	-241.5	1.04	-0.93	-2.77	
5,841.0	6.77	74.42	5,642.6	420.4	1,332.1	-243.4	2.68	-2.68	0.00	
5,936.0	4.48	79.16	5,737.1	422.6	1,341.1	-244.4	2.46	-2.41	4.99	
6,030.0	3.52	63.34	5,830.9	424.6	1,347.3	-245.6	1.55	-1.02	-16.83	
6,124.0	2.20	102.72	5,924.8	425.5	1,351.6	-245.9	2.44	-1.40	41.89	
6,219.0	0.97	65.63	6,019.8	425.4	1,354.1	-245.5	1.62	-1.29	-39.04	
6,313.0	0.62	67.38	6,113.7	425.9	1,355.3	-245.9	0.37	-0.37	1.86	
6,407.0	0.62	62.81	6,207.7	426.4	1,356.3	-246.2	0.05	0.00	-4.86	
6,502.0	0.70	52.62	6,302.7	427.0	1,357.2	-246.6	0.15	0.08	-10.73	
6,597.0	1.14	51.56	6,397.7	427.9	1,358.4	-247.4	0.46	0.46	-1.12	
6,690.0	0.97	60.35	6,490.7	428.9	1,359.8	-248.2	0.25	-0.18	9.45	
6,785.0	5.45	163.89	6,585.6	424.9	1,361.7	-244.0	6.06	4.72	108.99	
6,879.0	9.41	172.68	6,678.8	413.0	1,364.0	-231.9	4.37	4.21	9.35	
6,974.0	16.53	171.27	6,771.3	391.9	1,367.0	-210.6	7.50	7.49	-1.48	
7,068.0	23.04	178.13	6,859.7	360.3	1,369.6	-178.9	7.34	6.93	7.30	
7,163.0	30.43	183.05	6,944.5	317.6	1,369.0	-136.7	8.11	7.78	5.18	
7,258.0	42.65	180.76	7,020.7	261.2	1,367.2	-81.0	12.94	12.86	-2.41	
7,352.0	55.93	179.36	7,081.8	190.1	1,367.3	-10.5	14.17	14.13	-1.49	
7,447.0	62.78	179.53	7,130.2	108.4	1,368.0	70.6	7.21	7.21	0.18	
7,542.0	70.43	180.94	7,167.9	21.3	1,367.7	156.9	8.17	8.05	1.48	
7,636.0	76.85	180.24	7,194.4	-68.8	1,366.7	246.2	6.87	6.83	-0.74	
7,731.0	85.74	181.99	7,208.8	-162.6	1,364.9	338.9	9.53	9.36	1.84	
7,772.7	87.75	182.46	7,211.1	-204.2	1,363.3	380.0	4.94	4.81	1.12	
TPZ - 460'FNL & 807'FEL, Sec.18										
7,826.0	90.31	183.05	7,212.0	-257.5	1,360.7	432.4	4.94	4.81	1.11	
7,920.0	90.66	183.40	7,211.2	-351.3	1,355.4	524.8	0.53	0.37	0.37	
8,014.0	89.78	183.93	7,210.9	-445.1	1,349.4	617.0	1.09	-0.94	0.56	
8,109.0	90.22	182.70	7,210.9	-539.9	1,343.9	710.3	1.38	0.46	-1.29	
8,204.0	88.90	180.06	7,211.6	-634.9	1,341.6	804.2	3.11	-1.39	-2.78	
8,299.0	88.90	180.59	7,213.4	-729.9	1,341.1	898.3	0.56	0.00	0.56	
8,394.0	88.81	180.94	7,215.3	-824.9	1,339.8	992.3	0.38	-0.09	0.37	
8,488.0	88.99	181.29	7,217.1	-918.8	1,338.0	1,085.2	0.42	0.19	0.37	
8,582.0	88.81	181.11	7,218.9	-1,012.8	1,336.0	1,178.1	0.27	-0.19	-0.19	
8,677.0	89.78	179.88	7,220.1	-1,107.8	1,335.2	1,272.2	1.65	1.02	-1.29	
8,771.0	88.20	179.53	7,221.8	-1,201.8	1,335.7	1,365.4	1.72	-1.68	-0.37	
8,866.0	90.75	180.59	7,222.6	-1,296.7	1,335.6	1,459.6	2.91	2.68	1.12	
8,960.0	91.71	179.71	7,220.6	-1,390.7	1,335.4	1,552.7	1.39	1.02	-0.94	

Company:	Bayswater Exploration & Production, LLC	Local Co-ordinate Reference:	Well East Ault 14-18-19HNB
Project:	SEC.18-T7N-R65W	TVD Reference:	WELL @ 4934.0ft (Original Well Elev)
Site:	East Ault 18-C Pad Sec.18-T7N-R65W	MD Reference:	WELL @ 4934.0ft (Original Well Elev)
Well:	East Ault 14-18-19HNB	North Reference:	True
Wellbore:	East Ault 14-18-19HNB Wellbore #1	Survey Calculation Method:	Minimum Curvature
Design:	East Ault 14-18-19HNB Wellbore #1	Database:	US_EDM

Survey										
Measured Depth (ft)	Inclination (°)	Azimuth (°)	Vertical Depth (ft)	+N-/S (ft)	+E-/W (ft)	Vertical Section (ft)	Dogleg Rate (°/100usft)	Build Rate (°/100usft)	Turn Rate (°/100usft)	
9,055.0	91.98	179.53	7,217.6	-1,485.7	1,336.0	1,647.0	0.34	0.28	-0.19	
9,150.0	91.10	180.24	7,215.0	-1,580.6	1,336.2	1,741.1	1.19	-0.93	0.75	
9,244.0	90.66	181.47	7,213.6	-1,674.6	1,334.8	1,834.1	1.39	-0.47	1.31	
9,339.0	89.08	180.41	7,213.8	-1,769.6	1,333.2	1,928.1	2.00	-1.66	-1.12	
9,433.0	90.40	179.88	7,214.2	-1,863.6	1,333.0	2,021.3	1.51	1.40	-0.56	
9,527.0	89.34	180.76	7,214.4	-1,957.6	1,332.4	2,114.4	1.47	-1.13	0.94	
9,622.0	90.84	181.11	7,214.3	-2,052.6	1,330.9	2,208.4	1.62	1.58	0.37	
9,716.0	89.16	180.76	7,214.3	-2,146.5	1,329.4	2,301.4	1.83	-1.79	-0.37	
9,811.0	89.96	181.64	7,215.0	-2,241.5	1,327.4	2,395.3	1.25	0.84	0.93	
9,906.0	88.46	180.41	7,216.3	-2,336.5	1,325.7	2,489.2	2.04	-1.58	-1.29	
10,001.0	87.76	178.48	7,219.4	-2,431.4	1,326.6	2,583.5	2.16	-0.74	-2.03	
10,095.0	90.48	179.71	7,220.9	-2,525.4	1,328.1	2,676.8	3.18	2.89	1.31	
10,190.0	90.48	180.24	7,220.1	-2,620.4	1,328.1	2,771.0	0.56	0.00	0.56	
10,284.0	90.48	180.59	7,219.3	-2,714.4	1,327.4	2,864.1	0.37	0.00	0.37	
10,379.0	90.57	180.06	7,218.4	-2,809.4	1,326.9	2,958.2	0.57	0.09	-0.56	
10,474.0	90.31	180.94	7,217.7	-2,904.4	1,326.1	3,052.3	0.97	-0.27	0.93	
10,568.0	89.96	181.47	7,217.5	-2,998.4	1,324.1	3,145.2	0.68	-0.37	0.56	
10,663.0	89.69	180.59	7,217.8	-3,093.3	1,322.4	3,239.2	0.97	-0.28	-0.93	
10,757.0	90.22	181.11	7,217.8	-3,187.3	1,321.0	3,332.2	0.79	0.56	0.55	
10,852.0	89.78	178.48	7,217.8	-3,282.3	1,321.3	3,426.4	2.81	-0.46	-2.77	
10,946.0	90.66	179.88	7,217.5	-3,376.3	1,322.7	3,519.8	1.76	0.94	1.49	
11,041.0	90.92	179.36	7,216.2	-3,471.3	1,323.3	3,614.0	0.61	0.27	-0.55	
11,136.0	89.43	180.06	7,215.9	-3,566.3	1,323.8	3,708.3	1.73	-1.57	0.74	
11,231.0	90.22	181.11	7,216.2	-3,661.3	1,322.8	3,802.3	1.38	0.83	1.11	
11,326.0	88.55	179.36	7,217.2	-3,756.3	1,322.4	3,896.5	2.55	-1.76	-1.84	
11,420.0	88.64	179.36	7,219.5	-3,850.2	1,323.5	3,989.8	0.10	0.10	0.00	
11,515.0	88.72	180.06	7,221.7	-3,945.2	1,324.0	4,084.0	0.74	0.08	0.74	
11,609.0	88.90	180.06	7,223.6	-4,039.2	1,323.9	4,177.2	0.19	0.19	0.00	
11,704.0	90.66	179.36	7,224.0	-4,134.2	1,324.3	4,271.4	1.99	1.85	-0.74	
11,798.0	91.19	179.18	7,222.5	-4,228.2	1,325.5	4,364.7	0.60	0.56	-0.19	
11,893.0	91.54	179.36	7,220.2	-4,323.1	1,326.7	4,459.1	0.41	0.37	0.19	
11,987.0	91.01	180.76	7,218.1	-4,417.1	1,326.6	4,552.2	1.59	-0.56	1.49	
12,082.0	89.34	180.76	7,217.8	-4,512.1	1,325.4	4,646.2	1.76	-1.76	0.00	
12,176.0	90.04	180.24	7,218.4	-4,606.1	1,324.6	4,739.3	0.93	0.74	-0.55	
12,270.0	90.57	180.41	7,217.9	-4,700.1	1,324.0	4,832.5	0.59	0.56	0.18	
12,365.0	90.75	179.71	7,216.8	-4,795.1	1,323.9	4,926.6	0.76	0.19	-0.74	
12,460.0	89.87	180.59	7,216.2	-4,890.1	1,323.7	5,020.8	1.31	-0.93	0.93	
12,554.0	90.57	180.41	7,215.9	-4,984.1	1,322.9	5,113.9	0.77	0.74	-0.19	
12,648.0	89.16	180.41	7,216.1	-5,078.1	1,322.2	5,207.0	1.50	-1.50	0.00	
12,743.0	89.69	180.06	7,217.1	-5,173.1	1,321.8	5,301.1	0.67	0.56	-0.37	
12,838.0	90.57	180.59	7,216.8	-5,268.0	1,321.3	5,395.2	1.08	0.93	0.56	
12,932.0	91.71	181.11	7,215.0	-5,362.0	1,319.9	5,488.2	1.33	1.21	0.55	
13,027.0	89.43	179.36	7,214.0	-5,457.0	1,319.5	5,582.3	3.03	-2.40	-1.84	
13,121.0	89.43	179.88	7,215.0	-5,551.0	1,320.1	5,675.6	0.55	0.00	0.55	

Company:	Bayswater Exploration & Production, LLC	Local Co-ordinate Reference:	Well East Ault 14-18-19HNB
Project:	SEC.18-T7N-R65W	TVD Reference:	WELL @ 4934.0ft (Original Well Elev)
Site:	East Ault 18-C Pad Sec.18-T7N-R65W	MD Reference:	WELL @ 4934.0ft (Original Well Elev)
Well:	East Ault 14-18-19HNB	North Reference:	True
Wellbore:	East Ault 14-18-19HNB Wellbore #1	Survey Calculation Method:	Minimum Curvature
Design:	East Ault 14-18-19HNB Wellbore #1	Database:	US_EDM

Survey									
Measured Depth (ft)	Inclination (°)	Azimuth (°)	Vertical Depth (ft)	+N/-S (ft)	+E/-W (ft)	Vertical Section (ft)	Dogleg Rate (°/100usft)	Build Rate (°/100usft)	Turn Rate (°/100usft)
13,216.0	89.78	179.53	7,215.6	-5,646.0	1,320.6	5,769.9	0.52	0.37	-0.37
13,311.0	89.52	179.53	7,216.2	-5,741.0	1,321.4	5,864.2	0.27	-0.27	0.00
13,405.0	89.96	179.18	7,216.6	-5,835.0	1,322.4	5,957.5	0.60	0.47	-0.37
13,500.0	90.48	179.71	7,216.3	-5,930.0	1,323.4	6,051.8	0.78	0.55	0.56
13,595.0	89.60	180.76	7,216.2	-6,025.0	1,323.0	6,145.9	1.44	-0.93	1.11
13,689.0	88.81	179.71	7,217.5	-6,119.0	1,322.6	6,239.1	1.40	-0.84	-1.12
13,784.0	88.55	177.77	7,219.7	-6,213.9	1,324.7	6,333.5	2.06	-0.27	-2.04
13,878.0	90.66	178.30	7,220.3	-6,307.8	1,327.9	6,427.0	2.31	2.24	0.56
13,973.0	91.63	180.94	7,218.4	-6,402.8	1,328.5	6,521.3	2.96	1.02	2.78
14,067.0	90.13	182.35	7,217.0	-6,496.8	1,325.8	6,614.1	2.19	-1.60	1.50
14,162.0	91.19	181.82	7,215.9	-6,591.7	1,322.4	6,707.7	1.25	1.12	-0.56
14,257.0	89.60	182.52	7,215.2	-6,686.6	1,318.8	6,801.4	1.83	-1.67	0.74
14,352.0	90.48	182.17	7,215.2	-6,781.5	1,314.9	6,895.0	1.00	0.93	-0.37
14,446.0	89.16	181.47	7,215.5	-6,875.5	1,311.9	6,987.8	1.59	-1.40	-0.74
14,541.0	90.31	181.64	7,215.9	-6,970.4	1,309.3	7,081.6	1.22	1.21	0.18
14,635.0	89.08	181.11	7,216.4	-7,064.4	1,307.1	7,174.5	1.42	-1.31	-0.56
14,730.0	90.31	180.94	7,216.9	-7,159.4	1,305.4	7,268.4	1.31	1.29	-0.18
14,825.0	90.48	180.76	7,216.3	-7,254.4	1,304.0	7,362.4	0.26	0.18	-0.19
14,919.0	90.04	181.29	7,215.8	-7,348.4	1,302.3	7,455.4	0.73	-0.47	0.56
15,013.0	90.13	181.11	7,215.7	-7,442.3	1,300.3	7,548.3	0.21	0.10	-0.19
15,108.0	91.54	181.11	7,214.3	-7,537.3	1,298.5	7,642.2	1.48	1.48	0.00
15,202.0	89.96	180.06	7,213.1	-7,631.3	1,297.5	7,735.3	2.02	-1.68	-1.12
15,297.0	89.87	179.36	7,213.2	-7,726.3	1,298.0	7,829.5	0.74	-0.09	-0.74
15,391.0	89.16	177.77	7,214.0	-7,820.3	1,300.3	7,923.0	1.85	-0.76	-1.69
15,486.0	90.22	179.53	7,214.5	-7,915.2	1,302.6	8,017.4	2.16	1.12	1.85
15,580.0	90.66	178.83	7,213.8	-8,009.2	1,303.9	8,110.8	0.88	0.47	-0.74
15,675.0	90.75	180.41	7,212.6	-8,104.2	1,304.6	8,205.1	1.67	0.09	1.66
15,770.0	91.01	179.36	7,211.2	-8,199.2	1,304.7	8,299.3	1.14	0.27	-1.11
15,864.0	89.60	181.11	7,210.7	-8,293.2	1,304.4	8,392.4	2.39	-1.50	1.86
15,958.0	89.96	180.76	7,211.0	-8,387.2	1,302.8	8,485.4	0.53	0.38	-0.37
16,053.0	90.22	180.59	7,210.9	-8,482.2	1,301.7	8,579.4	0.33	0.27	-0.18
16,147.0	90.40	179.88	7,210.4	-8,576.2	1,301.3	8,672.6	0.78	0.19	-0.76
16,241.0	90.84	179.71	7,209.4	-8,670.1	1,301.7	8,765.8	0.50	0.47	-0.18
16,335.0	91.01	179.18	7,207.9	-8,764.1	1,302.6	8,859.1	0.59	0.18	-0.56
16,430.0	91.01	180.24	7,206.2	-8,859.1	1,303.0	8,953.4	1.12	0.00	1.12
16,524.0	91.01	180.06	7,204.5	-8,953.1	1,302.8	9,046.5	0.19	0.00	-0.19
16,619.0	91.36	179.88	7,202.6	-9,048.1	1,302.8	9,140.7	0.41	0.37	-0.19
16,714.0	91.28	179.36	7,200.4	-9,143.1	1,303.5	9,234.9	0.55	-0.08	-0.55
16,809.0	91.19	179.71	7,198.3	-9,238.0	1,304.2	9,329.2	0.38	-0.09	0.37
16,903.0	91.36	179.01	7,196.2	-9,332.0	1,305.3	9,422.5	0.77	0.18	-0.74
16,997.0	90.22	181.11	7,194.9	-9,426.0	1,305.2	9,515.7	2.54	-1.21	2.23
17,092.0	90.31	180.59	7,194.5	-9,521.0	1,303.8	9,609.7	0.56	0.09	-0.55
17,186.0	89.69	179.88	7,194.5	-9,615.0	1,303.4	9,702.8	1.00	-0.66	-0.76

Company:	Bayswater Exploration & Production, LLC	Local Co-ordinate Reference:	Well East Ault 14-18-19HNB
Project:	SEC.18-T7N-R65W	TVD Reference:	WELL @ 4934.0ft (Original Well Elev)
Site:	East Ault 18-C Pad Sec.18-T7N-R65W	MD Reference:	WELL @ 4934.0ft (Original Well Elev)
Well:	East Ault 14-18-19HNB	North Reference:	True
Wellbore:	East Ault 14-18-19HNB Wellbore #1	Survey Calculation Method:	Minimum Curvature
Design:	East Ault 14-18-19HNB Wellbore #1	Database:	US_EDM

Measured Depth (ft)	Inclination (°)	Azimuth (°)	Vertical Depth (ft)	+N/-S (ft)	+E/-W (ft)	Vertical Section (ft)	Dogleg Rate (°/100usft)	Build Rate (°/100usft)	Turn Rate (°/100usft)
17,280.0	91.01	179.88	7,193.9	-9,709.0	1,303.6	9,796.0	1.40	1.40	0.00
17,368.0	90.92	180.06	7,192.4	-9,797.0	1,303.6	9,883.3	0.23	-0.10	0.20
17,428.0	90.92	180.06	7,191.5	-9,856.9	1,303.6	9,942.8	0.00	0.00	0.00

Target Name	Dip Angle (°)	Dip Dir. (°)	TVD (ft)	+N/-S (ft)	+E/-W (ft)	Northing (usft)	Easting (usft)	Latitude	Longitude
SHL 299'FNL, 2172'FEL - hit/miss target - Shape - Point	0.00	0.00	1.0	0.0	0.0	1,455,735.05	3,221,033.02	40.581669	-104.704231
BHL 470'FSL, 825'FEL, : - survey misses target center by 9.6ft at 17428.0ft MD (7191.5 TVD, -9856.9 N, 1303.6 E) - Point	0.00	0.00	7,194.0	-9,857.4	1,294.4	1,445,889.91	3,222,415.76	40.554612	-104.699573

Measured Depth (ft)	Vertical Depth (ft)	Local Coordinates		Comment
		+N/-S (ft)	+E/-W (ft)	
7,772.7	7,211.1	-204.2	1,363.3	TPZ - 460'FNL & 807'FEL, Sec.18

Checked By: _____ Approved By: _____ Date: _____