

Bayswater Exploration & Production, LLC

Well Name: **East Ault 13-18-19HC**

Surface Location: East Ault 18-C Pad Sec.18-T7N-R65W

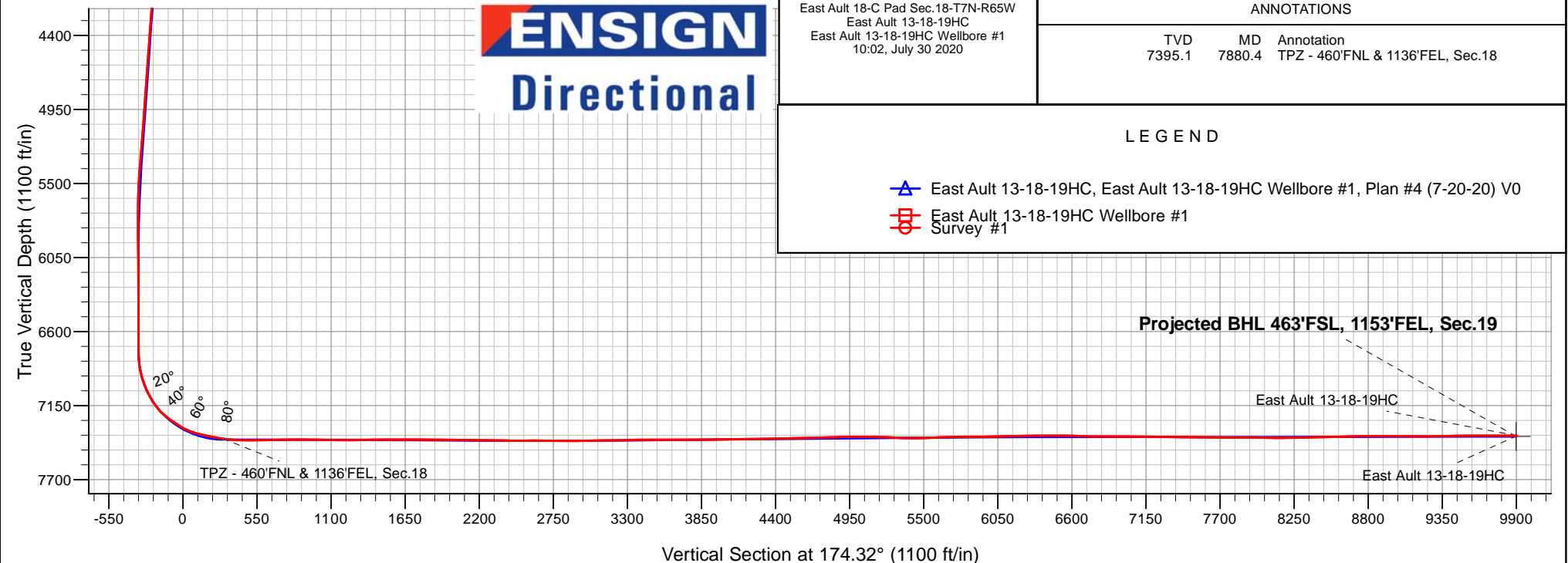
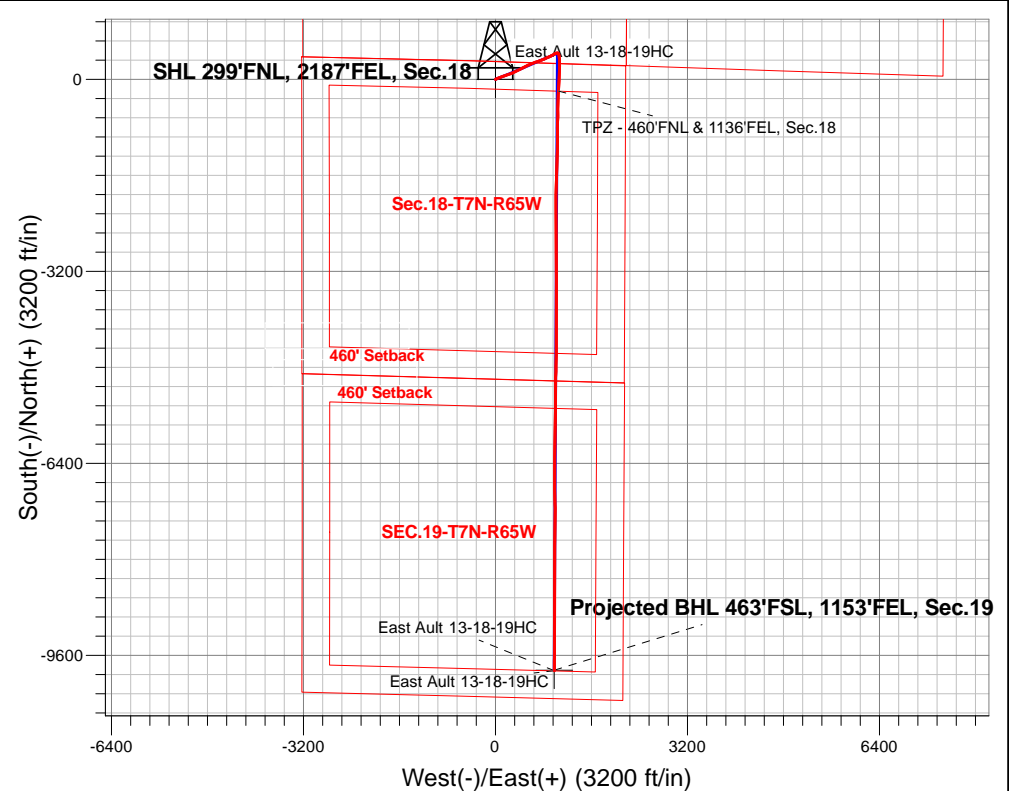
North American Datum 1983 , US State Plane 1983, Colorado Northern Zone

Ground Elevation: 4909.0

+N/-S	+E/-W	Northing	Easting	Latitude	Longitude	Slot
0.0	0.0	1455735.27	3221017.74	40.581670	-104.704286	
Original Well Elev WELL @ 4934.0ft (Original Well Elev)						

FINAL SURVEY

Projected Bottom Hole Location
17,546'MD 7373'TVD 9856'S & 982'E of SHL
90.13 degree Incl @ 180.49 degree AZM



ENSIGN
Directional

East Ault 18-C Pad Sec.18-T7N-R65W
East Ault 13-18-19HC
East Ault 13-18-19HC Wellbore #1
10:02, July 30 2020

ANNOTATIONS

TVD	MD	Annotation
7395.1	7880.4	TPZ - 460'FNL & 1136'FEL, Sec.18

LEGEND

- East Ault 13-18-19HC, East Ault 13-18-19HC Wellbore #1, Plan #4 (7-20-20) V0
- East Ault 13-18-19HC Wellbore #1 Survey #1



Bayswater Exploration & Production, LLC

SEC.18-T7N-R65W

East Ault 18-C Pad Sec.18-T7N-R65W

East Ault 13-18-19HC

East Ault 13-18-19HC Wellbore #1

Survey: Survey #1

Standard Survey Report

30 July, 2020



BAYSWATER
EXPLORATION & PRODUCTION, LLC

Company:	Bayswater Exploration & Production, LLC	Local Co-ordinate Reference:	Well East Ault 13-18-19HC
Project:	SEC.18-T7N-R65W	TVD Reference:	WELL @ 4934.0ft (Original Well Elev)
Site:	East Ault 18-C Pad Sec.18-T7N-R65W	MD Reference:	WELL @ 4934.0ft (Original Well Elev)
Well:	East Ault 13-18-19HC	North Reference:	True
Wellbore:	East Ault 13-18-19HC Wellbore #1	Survey Calculation Method:	Minimum Curvature
Design:	East Ault 13-18-19HC Wellbore #1	Database:	US_EDM

Project	SEC.18-T7N-R65W, Weld County, CO		
Map System:	US State Plane 1983	System Datum:	Mean Sea Level
Geo Datum:	North American Datum 1983		Using Well Reference Point
Map Zone:	Colorado Northern Zone		Using geodetic scale factor

Site		East Ault 18-C Pad Sec.18-T7N-R65W			
Site Position:		Northing:	1,455,737.31 usft	Latitude:	40.581680
From:	Lat/Long	Easting:	3,220,838.00 usft	Longitude:	-104.704933
Position Uncertainty:	0.0 ft	Slot Radius:	13-3/16 "	Grid Convergence:	0.51 °

Well	East Ault 13-18-19HC					
Well Position	+N/-S	0.0 ft	Northing:	1,455,735.27 usft	Latitude:	40.581670
	+E/-W	0.0 ft	Easting:	3,221,017.74 usft	Longitude:	-104.704286
Position Uncertainty		0.0 ft	Wellhead Elevation:	0.0 ft	Ground Level:	4,909.0 ft

Wellbore	East Ault 13-18-19HC Wellbore #1				
Magnetics	Model Name	Sample Date	Declination (°)	Dip Angle (°)	Field Strength (nT)
	HDGM	07/20/2020	7.87	66.88	52,136

Design	East Ault 13-18-19HC Wellbore #1				
Audit Notes:					
Version:	1.0	Phase:	ACTUAL	Tie On Depth:	0.0
Vertical Section:	Depth From (TVD) (ft)	+N/-S (ft)	+E/-W (ft)	Direction (°)	
	0.0	0.0	0.0	174.32	

Survey Program	Date	07/30/2020			
From (ft)	To (ft)	Survey (Wellbore)	Tool Name	Description	
121.0	17,546.0	Survey #1 (East Ault 13-18-19HC Wellbore	MWD	MWD - Standard	

Survey										
Measured Depth (ft)	Inclination (°)	Azimuth (°)	Vertical Depth (ft)	+N/-S (ft)	+E/-W (ft)	Vertical Section (ft)	Dogleg Rate (°/100usft)	Build Rate (°/100usft)	Turn Rate (°/100usft)	
0.0	0.00	0.00	0.0	0.0	0.0	0.0	0.00	0.00	0.00	
121.0	0.53	99.70	121.0	-0.1	0.6	0.1	0.44	0.44	0.00	
216.0	0.70	100.58	216.0	-0.3	1.6	0.4	0.18	0.18	0.93	
310.0	0.79	108.14	310.0	-0.6	2.7	0.8	0.14	0.10	8.04	
404.0	0.88	89.51	404.0	-0.8	4.1	1.2	0.30	0.10	-19.82	
499.0	1.06	97.95	499.0	-0.9	5.7	1.4	0.24	0.19	8.88	
593.0	2.99	57.69	592.9	0.3	8.6	0.6	2.43	2.05	-42.83	
687.0	3.34	54.35	686.8	3.2	12.9	-1.9	0.42	0.37	-3.55	
782.0	4.84	62.97	781.5	6.6	18.7	-4.8	1.70	1.58	9.07	
876.0	5.89	63.49	875.1	10.6	26.6	-7.9	1.12	1.12	0.55	

Company:	Bayswater Exploration & Production, LLC	Local Co-ordinate Reference:	Well East Ault 13-18-19HC
Project:	SEC.18-T7N-R65W	TVD Reference:	WELL @ 4934.0ft (Original Well Elev)
Site:	East Ault 18-C Pad Sec.18-T7N-R65W	MD Reference:	WELL @ 4934.0ft (Original Well Elev)
Well:	East Ault 13-18-19HC	North Reference:	True
Wellbore:	East Ault 13-18-19HC Wellbore #1	Survey Calculation Method:	Minimum Curvature
Design:	East Ault 13-18-19HC Wellbore #1	Database:	US_EDM

Survey										
Measured Depth (ft)	Inclination (°)	Azimuth (°)	Vertical Depth (ft)	+N/-S (ft)	+E/-W (ft)	Vertical Section (ft)	Dogleg Rate (°/100usft)	Build Rate (°/100usft)	Turn Rate (°/100usft)	
971.0	8.00	68.41	969.4	15.2	37.1	-11.5	2.31	2.22	5.18	
1,066.0	8.44	68.94	1,063.4	20.1	49.7	-15.1	0.47	0.46	0.56	
1,160.0	9.94	71.58	1,156.2	25.2	63.9	-18.7	1.66	1.60	2.81	
1,255.0	11.96	67.01	1,249.5	31.6	80.7	-23.5	2.31	2.13	-4.81	
1,350.0	14.07	70.52	1,342.0	39.3	100.7	-29.2	2.37	2.22	3.69	
1,444.0	13.81	69.12	1,433.3	47.1	121.9	-34.8	0.45	-0.28	-1.49	
1,505.0	14.07	69.29	1,492.5	52.3	135.7	-38.7	0.43	0.43	0.28	
1,662.0	14.16	70.98	1,644.7	65.3	171.7	-48.0	0.27	0.06	1.08	
1,756.0	13.81	72.03	1,735.9	72.6	193.2	-53.1	0.46	-0.37	1.12	
1,850.0	13.54	71.85	1,827.3	79.4	214.3	-57.8	0.29	-0.29	-0.19	
1,944.0	13.10	71.85	1,918.8	86.2	234.9	-62.5	0.47	-0.47	0.00	
2,038.0	13.98	68.16	2,010.1	93.7	255.6	-68.0	1.31	0.94	-3.93	
2,132.0	13.63	66.76	2,101.4	102.3	276.3	-74.5	0.51	-0.37	-1.49	
2,227.0	13.10	66.41	2,193.9	111.1	296.4	-81.2	0.56	-0.56	-0.37	
2,322.0	12.49	66.05	2,286.5	119.5	315.7	-87.7	0.65	-0.64	-0.38	
2,416.0	12.22	65.70	2,378.3	127.8	334.1	-94.1	0.30	-0.29	-0.37	
2,510.0	13.98	64.12	2,469.9	136.8	353.3	-101.2	1.91	1.87	-1.68	
2,605.0	13.45	63.24	2,562.2	146.8	373.5	-109.1	0.60	-0.56	-0.93	
2,700.0	12.49	62.71	2,654.7	156.5	392.5	-116.9	1.02	-1.01	-0.56	
2,794.0	11.96	61.13	2,746.6	165.8	410.1	-124.4	0.67	-0.56	-1.68	
2,889.0	13.81	63.24	2,839.2	175.7	428.8	-132.4	2.01	1.95	2.22	
3,007.0	13.19	62.36	2,953.9	188.3	453.3	-142.5	0.55	-0.53	-0.75	
3,101.0	12.49	61.13	3,045.6	198.2	471.7	-150.5	0.80	-0.74	-1.31	
3,196.0	14.42	64.12	3,138.0	208.3	491.4	-158.6	2.16	2.03	3.15	
3,290.0	13.19	63.07	3,229.3	218.3	511.5	-166.6	1.34	-1.31	-1.12	
3,385.0	11.78	60.78	3,322.0	227.9	529.6	-174.4	1.57	-1.48	-2.41	
3,480.0	14.25	68.16	3,414.6	237.0	548.9	-181.5	3.13	2.60	7.77	
3,574.0	13.01	64.30	3,505.9	245.9	569.2	-188.3	1.64	-1.32	-4.11	
3,668.0	13.19	70.45	3,597.5	254.1	588.8	-194.5	1.49	0.19	6.54	
3,763.0	12.57	69.22	3,690.1	261.3	608.7	-199.8	0.71	-0.65	-1.29	
3,858.0	14.16	68.51	3,782.5	269.3	629.2	-205.7	1.68	1.67	-0.75	
3,953.0	12.75	67.81	3,874.9	277.5	649.7	-211.8	1.49	-1.48	-0.74	
4,048.0	15.04	72.21	3,967.1	285.2	671.2	-217.4	2.65	2.41	4.63	
4,143.0	15.83	70.80	4,058.7	293.2	695.1	-223.0	0.92	0.83	-1.48	
4,237.0	16.09	70.45	4,149.1	301.8	719.5	-229.1	0.29	0.28	-0.37	
4,332.0	16.44	70.80	4,240.3	310.6	744.6	-235.4	0.38	0.37	0.37	
4,427.0	15.83	69.92	4,331.5	319.5	769.5	-241.8	0.69	-0.64	-0.93	
4,521.0	14.68	68.34	4,422.2	328.3	792.6	-248.3	1.30	-1.22	-1.68	
4,616.0	14.07	66.93	4,514.2	337.3	814.4	-255.0	0.74	-0.64	-1.48	
4,710.0	12.84	65.00	4,605.7	346.2	834.4	-261.9	1.39	-1.31	-2.05	
4,805.0	12.22	64.82	4,698.4	354.9	853.0	-268.7	0.65	-0.65	-0.19	
4,899.0	11.61	63.59	4,790.4	363.4	870.5	-275.4	0.70	-0.65	-1.31	
4,994.0	12.31	67.64	4,883.3	371.5	888.4	-281.7	1.15	0.74	4.26	
5,089.0	11.08	63.94	4,976.3	379.3	906.0	-287.8	1.52	-1.29	-3.89	

Company:	Bayswater Exploration & Production, LLC	Local Co-ordinate Reference:	Well East Ault 13-18-19HC
Project:	SEC.18-T7N-R65W	TVD Reference:	WELL @ 4934.0ft (Original Well Elev)
Site:	East Ault 18-C Pad Sec.18-T7N-R65W	MD Reference:	WELL @ 4934.0ft (Original Well Elev)
Well:	East Ault 13-18-19HC	North Reference:	True
Wellbore:	East Ault 13-18-19HC Wellbore #1	Survey Calculation Method:	Minimum Curvature
Design:	East Ault 13-18-19HC Wellbore #1	Database:	US_EDM

Survey									
Measured Depth (ft)	Inclination (°)	Azimuth (°)	Vertical Depth (ft)	+N/-S (ft)	+E/-W (ft)	Vertical Section (ft)	Dogleg Rate (°/100usft)	Build Rate (°/100usft)	Turn Rate (°/100usft)
5,184.0	13.38	62.89	5,069.2	388.3	924.0	-295.0	2.43	2.42	-1.11
5,278.0	12.22	62.19	5,160.8	397.9	942.5	-302.7	1.25	-1.23	-0.74
5,372.0	11.70	62.36	5,252.8	407.0	959.7	-310.0	0.55	-0.55	0.18
5,467.0	10.82	60.78	5,346.0	415.8	976.0	-317.2	0.98	-0.93	-1.66
5,561.0	9.85	57.26	5,438.4	424.5	990.5	-324.4	1.23	-1.03	-3.74
5,655.0	8.35	68.87	5,531.3	431.3	1,003.6	-329.8	2.51	-1.60	12.35
5,750.0	5.63	74.49	5,625.6	435.0	1,014.6	-332.5	2.95	-2.86	5.92
5,845.0	3.52	82.75	5,720.2	436.6	1,021.9	-333.4	2.32	-2.22	8.69
5,939.0	1.85	88.20	5,814.1	437.0	1,026.3	-333.3	1.80	-1.78	5.80
6,033.0	1.76	92.42	5,908.1	437.0	1,029.3	-333.0	0.17	-0.10	4.49
6,128.0	1.85	94.35	6,003.0	436.9	1,032.3	-332.6	0.11	0.09	2.03
6,223.0	0.97	120.72	6,098.0	436.3	1,034.5	-331.8	1.13	-0.93	27.76
6,317.0	0.62	108.59	6,192.0	435.8	1,035.7	-331.1	0.41	-0.37	-12.90
6,412.0	0.88	102.44	6,287.0	435.4	1,036.9	-330.7	0.29	0.27	-6.47
6,506.0	0.97	93.65	6,381.0	435.2	1,038.4	-330.3	0.18	0.10	-9.35
6,601.0	1.14	92.95	6,476.0	435.1	1,040.1	-330.1	0.18	0.18	-0.74
6,696.0	0.97	84.69	6,571.0	435.2	1,041.8	-329.9	0.24	-0.18	-8.69
6,791.0	1.67	77.30	6,665.9	435.5	1,044.0	-330.1	0.76	0.74	-7.78
6,886.0	1.67	96.64	6,760.9	435.7	1,046.7	-330.0	0.59	0.00	20.36
6,980.0	8.88	162.56	6,854.5	428.6	1,050.3	-322.5	8.87	7.67	70.13
7,075.0	16.27	164.49	6,947.1	408.7	1,056.0	-302.2	7.79	7.78	2.03
7,169.0	25.06	170.29	7,035.0	376.4	1,062.9	-269.3	9.59	9.35	6.17
7,264.0	29.90	173.46	7,119.3	333.0	1,069.0	-225.6	5.32	5.09	3.34
7,358.0	45.11	176.44	7,193.6	276.1	1,073.8	-168.5	16.29	16.18	3.17
7,452.0	55.75	183.65	7,253.5	203.9	1,073.4	-96.6	12.76	11.32	7.67
7,547.0	58.48	183.30	7,305.0	124.2	1,068.5	-17.9	2.89	2.87	-0.37
7,641.0	71.67	184.53	7,344.6	39.4	1,062.7	66.0	14.08	14.03	1.31
7,736.0	77.82	182.77	7,369.6	-52.0	1,056.9	156.4	6.72	6.47	-1.85
7,830.0	80.28	182.42	7,387.4	-144.2	1,052.7	247.7	2.64	2.62	-0.37
7,880.4	82.12	182.61	7,395.1	-194.0	1,050.5	297.0	3.67	3.65	0.37
TPZ - 460'FNL & 1136'FEL, Sec.18									
7,924.0	83.71	182.77	7,400.5	-237.2	1,048.5	339.8	3.67	3.65	0.37
8,019.0	89.08	180.84	7,406.5	-331.9	1,045.5	433.8	6.01	5.65	-2.03
8,114.0	89.96	180.66	7,407.3	-426.9	1,044.3	528.2	0.95	0.93	-0.19
8,208.0	91.10	181.19	7,406.4	-520.9	1,042.7	621.5	1.34	1.21	0.56
8,303.0	92.15	181.37	7,403.7	-615.8	1,040.6	715.8	1.12	1.11	0.19
8,398.0	89.34	181.37	7,402.5	-710.8	1,038.4	810.1	2.96	-2.96	0.00
8,492.0	89.87	181.54	7,403.1	-804.7	1,036.0	903.3	0.59	0.56	0.18
8,587.0	89.52	180.66	7,403.6	-899.7	1,034.1	997.7	1.00	-0.37	-0.93
8,681.0	89.08	179.96	7,404.8	-993.7	1,033.6	1,091.1	0.88	-0.47	-0.74
8,776.0	88.99	179.61	7,406.4	-1,088.7	1,034.0	1,185.7	0.38	-0.09	-0.37
8,871.0	91.28	180.84	7,406.1	-1,183.7	1,033.6	1,280.2	2.74	2.41	1.29
8,965.0	91.63	180.66	7,403.8	-1,277.7	1,032.4	1,373.6	0.42	0.37	-0.19

Company:	Bayswater Exploration & Production, LLC	Local Co-ordinate Reference:	Well East Ault 13-18-19HC
Project:	SEC.18-T7N-R65W	TVD Reference:	WELL @ 4934.0ft (Original Well Elev)
Site:	East Ault 18-C Pad Sec.18-T7N-R65W	MD Reference:	WELL @ 4934.0ft (Original Well Elev)
Well:	East Ault 13-18-19HC	North Reference:	True
Wellbore:	East Ault 13-18-19HC Wellbore #1	Survey Calculation Method:	Minimum Curvature
Design:	East Ault 13-18-19HC Wellbore #1	Database:	US_EDM

Survey									
Measured Depth (ft)	Inclination (°)	Azimuth (°)	Vertical Depth (ft)	+N/-S (ft)	+E/-W (ft)	Vertical Section (ft)	Dogleg Rate (°/100usft)	Build Rate (°/100usft)	Turn Rate (°/100usft)
9,060.0	90.57	182.07	7,401.9	-1,372.6	1,030.1	1,467.8	1.86	-1.12	1.48
9,154.0	90.75	183.12	7,400.9	-1,466.5	1,025.9	1,560.8	1.13	0.19	1.12
9,249.0	88.90	183.30	7,401.1	-1,561.3	1,020.5	1,654.7	1.96	-1.95	0.19
9,343.0	88.90	181.72	7,402.9	-1,655.2	1,016.4	1,747.7	1.68	0.00	-1.68
9,437.0	89.78	181.37	7,404.0	-1,749.2	1,013.9	1,841.0	1.01	0.94	-0.37
9,532.0	90.40	181.37	7,403.9	-1,844.2	1,011.6	1,935.2	0.65	0.65	0.00
9,627.0	88.90	180.66	7,404.5	-1,939.1	1,009.9	2,029.6	1.75	-1.58	-0.75
9,721.0	89.52	180.66	7,405.8	-2,033.1	1,008.9	2,123.0	0.66	0.66	0.00
9,816.0	90.66	180.84	7,405.6	-2,128.1	1,007.6	2,217.4	1.21	1.20	0.19
9,911.0	88.11	179.43	7,406.6	-2,223.1	1,007.4	2,311.9	3.07	-2.68	-1.48
10,005.0	88.81	179.26	7,409.2	-2,317.1	1,008.5	2,405.5	0.77	0.74	-0.18
10,101.0	89.96	179.08	7,410.2	-2,413.0	1,009.9	2,501.1	1.21	1.20	-0.19
10,196.0	90.57	179.26	7,409.7	-2,508.0	1,011.2	2,595.8	0.67	0.64	0.19
10,291.0	89.08	179.61	7,410.0	-2,603.0	1,012.2	2,690.4	1.61	-1.57	0.37
10,385.0	89.60	179.61	7,411.1	-2,697.0	1,012.8	2,784.0	0.55	0.55	0.00
10,480.0	90.04	179.61	7,411.4	-2,792.0	1,013.5	2,878.6	0.46	0.46	0.00
10,574.0	90.57	179.08	7,410.9	-2,886.0	1,014.5	2,972.2	0.80	0.56	-0.56
10,669.0	91.01	178.38	7,409.6	-2,981.0	1,016.6	3,067.0	0.87	0.46	-0.74
10,763.0	90.48	180.84	7,408.4	-3,075.0	1,017.3	3,160.5	2.68	-0.56	2.62
10,858.0	91.19	180.31	7,407.0	-3,169.9	1,016.3	3,255.0	0.93	0.75	-0.56
10,952.0	91.36	179.78	7,404.9	-3,263.9	1,016.3	3,348.5	0.59	0.18	-0.56
11,047.0	91.71	179.78	7,402.4	-3,358.9	1,016.6	3,443.0	0.37	0.37	0.00
11,142.0	88.37	180.31	7,402.3	-3,453.9	1,016.5	3,537.5	3.56	-3.52	0.56
11,236.0	89.78	179.26	7,403.8	-3,547.9	1,016.9	3,631.1	1.87	1.50	-1.12
11,330.0	90.22	180.49	7,403.8	-3,641.9	1,017.1	3,724.6	1.39	0.47	1.31
11,424.0	90.40	180.84	7,403.3	-3,735.8	1,016.0	3,818.1	0.42	0.19	0.37
11,519.0	90.40	180.14	7,402.6	-3,830.8	1,015.2	3,912.5	0.74	0.00	-0.74
11,613.0	91.85	179.61	7,400.8	-3,924.8	1,015.4	4,006.0	1.64	1.54	-0.56
11,708.0	90.22	181.01	7,399.1	-4,019.8	1,014.9	4,100.5	2.26	-1.72	1.47
11,803.0	90.75	180.31	7,398.3	-4,114.8	1,013.8	4,194.9	0.92	0.56	-0.74
11,897.0	90.84	179.78	7,397.0	-4,208.8	1,013.7	4,288.4	0.57	0.10	-0.56
11,992.0	91.10	179.78	7,395.4	-4,303.8	1,014.1	4,383.0	0.27	0.27	0.00
12,087.0	91.36	179.26	7,393.3	-4,398.7	1,014.9	4,477.6	0.61	0.27	-0.55
12,181.0	91.71	178.91	7,390.8	-4,492.7	1,016.4	4,571.2	0.53	0.37	-0.37
12,276.0	91.19	181.72	7,388.4	-4,587.6	1,015.9	4,665.7	3.01	-0.55	2.96
12,370.0	91.63	181.89	7,386.1	-4,681.6	1,012.9	4,758.8	0.50	0.47	0.18
12,465.0	91.89	181.37	7,383.2	-4,776.5	1,010.2	4,853.0	0.61	0.27	-0.55
12,560.0	89.78	181.89	7,381.8	-4,871.4	1,007.5	4,947.2	2.29	-2.22	0.55
12,655.0	90.40	182.25	7,381.6	-4,966.4	1,004.1	5,041.4	0.75	0.65	0.38
12,749.0	88.20	179.96	7,382.8	-5,060.3	1,002.2	5,134.7	3.38	-2.34	-2.44
12,844.0	89.08	181.37	7,385.0	-5,155.3	1,001.1	5,229.1	1.75	0.93	1.48
12,938.0	86.00	178.55	7,389.1	-5,249.2	1,001.2	5,322.5	4.44	-3.28	-3.00
13,033.0	90.22	179.78	7,392.2	-5,344.1	1,002.6	5,417.1	4.63	4.44	1.29
13,128.0	91.98	179.96	7,390.4	-5,439.1	1,002.8	5,511.6	1.86	1.85	0.19

Company:	Bayswater Exploration & Production, LLC	Local Co-ordinate Reference:	Well East Ault 13-18-19HC
Project:	SEC.18-T7N-R65W	TVD Reference:	WELL @ 4934.0ft (Original Well Elev)
Site:	East Ault 18-C Pad Sec.18-T7N-R65W	MD Reference:	WELL @ 4934.0ft (Original Well Elev)
Well:	East Ault 13-18-19HC	North Reference:	True
Wellbore:	East Ault 13-18-19HC Wellbore #1	Survey Calculation Method:	Minimum Curvature
Design:	East Ault 13-18-19HC Wellbore #1	Database:	US_EDM

Survey									
Measured Depth (ft)	Inclination (°)	Azimuth (°)	Vertical Depth (ft)	+N/-S (ft)	+E/-W (ft)	Vertical Section (ft)	Dogleg Rate (°/100usft)	Build Rate (°/100usft)	Turn Rate (°/100usft)
13,223.0	93.21	179.96	7,386.1	-5,534.0	1,002.9	5,606.1	1.29	1.29	0.00
13,318.0	91.01	181.37	7,382.6	-5,628.9	1,001.8	5,700.4	2.75	-2.32	1.48
13,412.0	90.22	181.72	7,381.6	-5,722.9	999.2	5,793.7	0.92	-0.84	0.37
13,506.0	90.57	181.72	7,380.9	-5,816.8	996.4	5,886.9	0.37	0.37	0.00
13,600.0	89.60	181.19	7,380.8	-5,910.8	994.0	5,980.1	1.18	-1.03	-0.56
13,695.0	92.07	179.96	7,379.4	-6,005.8	993.1	6,074.6	2.90	2.60	-1.29
13,789.0	91.28	180.49	7,376.7	-6,099.7	992.7	6,168.0	1.01	-0.84	0.56
13,883.0	91.80	180.66	7,374.1	-6,193.7	991.8	6,261.4	0.58	0.55	0.18
13,978.0	89.78	180.66	7,372.8	-6,288.7	990.7	6,355.8	2.13	-2.13	0.00
14,073.0	90.31	180.66	7,372.7	-6,383.7	989.6	6,450.3	0.56	0.56	0.00
14,168.0	89.25	180.84	7,373.1	-6,478.6	988.3	6,544.7	1.13	-1.12	0.19
14,262.0	88.46	182.07	7,375.0	-6,572.6	985.9	6,637.9	1.55	-0.84	1.31
14,357.0	87.85	179.26	7,378.0	-6,667.5	984.8	6,732.3	3.03	-0.64	-2.96
14,451.0	90.13	178.91	7,379.7	-6,761.5	986.3	6,825.9	2.45	2.43	-0.37
14,546.0	90.13	178.38	7,379.5	-6,856.5	988.6	6,920.6	0.56	0.00	-0.56
14,641.0	89.52	179.26	7,379.8	-6,951.4	990.5	7,015.4	1.13	-0.64	0.93
14,735.0	90.04	179.08	7,380.1	-7,045.4	991.9	7,109.0	0.59	0.55	-0.19
14,829.0	89.43	177.32	7,380.6	-7,139.4	994.9	7,202.8	1.98	-0.65	-1.87
14,923.0	89.08	179.96	7,381.8	-7,233.3	997.1	7,296.5	2.83	-0.37	2.81
15,018.0	89.52	179.78	7,383.0	-7,328.3	997.3	7,391.1	0.50	0.46	-0.19
15,112.0	88.81	181.54	7,384.3	-7,422.3	996.2	7,484.5	2.02	-0.76	1.87
15,207.0	89.34	180.84	7,385.9	-7,517.3	994.3	7,578.8	0.92	0.56	-0.74
15,301.0	89.69	180.84	7,386.7	-7,611.3	992.9	7,672.2	0.37	0.37	0.00
15,395.0	90.22	180.84	7,386.7	-7,705.3	991.5	7,765.6	0.56	0.56	0.00
15,490.0	90.84	180.66	7,385.9	-7,800.2	990.3	7,860.0	0.68	0.65	-0.19
15,584.0	88.55	180.84	7,386.4	-7,894.2	989.0	7,953.4	2.44	-2.44	0.19
15,679.0	88.99	180.66	7,388.4	-7,989.2	987.8	8,047.7	0.50	0.46	-0.19
15,774.0	89.25	179.96	7,389.9	-8,084.2	987.3	8,142.2	0.79	0.27	-0.74
15,869.0	92.59	181.01	7,388.3	-8,179.2	986.5	8,236.6	3.69	3.52	1.11
15,963.0	90.48	179.61	7,385.8	-8,273.1	986.0	8,330.1	2.69	-2.24	-1.49
16,057.0	90.84	179.08	7,384.7	-8,367.1	987.0	8,423.7	0.68	0.38	-0.56
16,152.0	91.63	179.08	7,382.7	-8,462.1	988.6	8,518.4	0.83	0.83	0.00
16,246.0	92.07	178.55	7,379.6	-8,556.0	990.5	8,612.0	0.73	0.47	-0.56
16,340.0	91.10	180.84	7,377.0	-8,649.9	991.0	8,705.6	2.64	-1.03	2.44
16,435.0	89.69	180.84	7,376.4	-8,744.9	989.6	8,799.9	1.48	-1.48	0.00
16,530.0	90.40	180.84	7,376.3	-8,839.9	988.2	8,894.3	0.75	0.75	0.00
16,623.0	89.60	179.78	7,376.3	-8,932.9	987.7	8,986.8	1.43	-0.86	-1.14
16,718.0	89.08	178.91	7,377.4	-9,027.9	988.8	9,081.4	1.07	-0.55	-0.92
16,812.0	90.48	181.19	7,377.8	-9,121.9	988.7	9,175.0	2.85	1.49	2.43
16,907.0	90.66	180.66	7,376.8	-9,216.9	987.2	9,269.3	0.59	0.19	-0.56
17,001.0	90.66	180.14	7,375.7	-9,310.9	986.5	9,362.8	0.55	0.00	-0.55
17,096.0	90.75	179.78	7,374.6	-9,405.9	986.6	9,457.3	0.39	0.09	-0.38
17,191.0	91.10	179.26	7,373.0	-9,500.8	987.4	9,551.9	0.66	0.37	-0.55

Company:	Bayswater Exploration & Production, LLC	Local Co-ordinate Reference:	Well East Ault 13-18-19HC
Project:	SEC.18-T7N-R65W	TVD Reference:	WELL @ 4934.0ft (Original Well Elev)
Site:	East Ault 18-C Pad Sec.18-T7N-R65W	MD Reference:	WELL @ 4934.0ft (Original Well Elev)
Well:	East Ault 13-18-19HC	North Reference:	True
Wellbore:	East Ault 13-18-19HC Wellbore #1	Survey Calculation Method:	Minimum Curvature
Design:	East Ault 13-18-19HC Wellbore #1	Database:	US_EDM

Survey										
Measured Depth (ft)	Inclination (°)	Azimuth (°)	Vertical Depth (ft)	+N/-S (ft)	+E/-W (ft)	Vertical Section (ft)	Dogleg Rate (°/100usft)	Build Rate (°/100usft)	Turn Rate (°/100usft)	
17,286.0	89.43	181.72	7,372.6	-9,595.8	986.6	9,646.4	3.13	-1.76	2.59	
17,381.0	89.87	181.37	7,373.2	-9,690.8	984.0	9,740.6	0.59	0.46	-0.37	
17,486.0	90.13	180.49	7,373.2	-9,795.8	982.3	9,844.9	0.87	0.25	-0.84	
17,546.0	90.13	180.49	7,373.0	-9,855.8	981.8	9,904.6	0.00	0.00	0.00	

Design Targets										
Target Name	Dip Angle (°)	Dip Dir. (°)	TVD (ft)	+N/-S (ft)	+E/-W (ft)	Northing (usft)	Easting (usft)	Latitude		
- hit/miss target										
- Shape										
SHL 299'FNL, 2187'FEL	0.00	0.00	1.0	0.0	0.0	1,455,735.28	3,221,017.74	40.581670		
- survey hits target center										
- Point										
BHL 470'FSL, 1155'FEL,	0.00	0.00	7,379.0	-9,849.1	979.5	1,445,895.68	3,222,085.58	40.554636		
- survey misses target center by 6.4ft at 17539.3ft MD (7373.1 TVD, -9849.1 N, 981.8 E)										
- Point										

Survey Annotations					
Measured Depth (ft)	Vertical Depth (ft)	Local Coordinates			
		+N/-S (ft)	+E/-W (ft)	Comment	
7,880.4	7,395.1	-194.0	1,050.5	TPZ - 460'FNL & 1136'FEL, Sec.18	

Checked By: _____	Approved By: _____	Date: _____
-------------------	--------------------	-------------