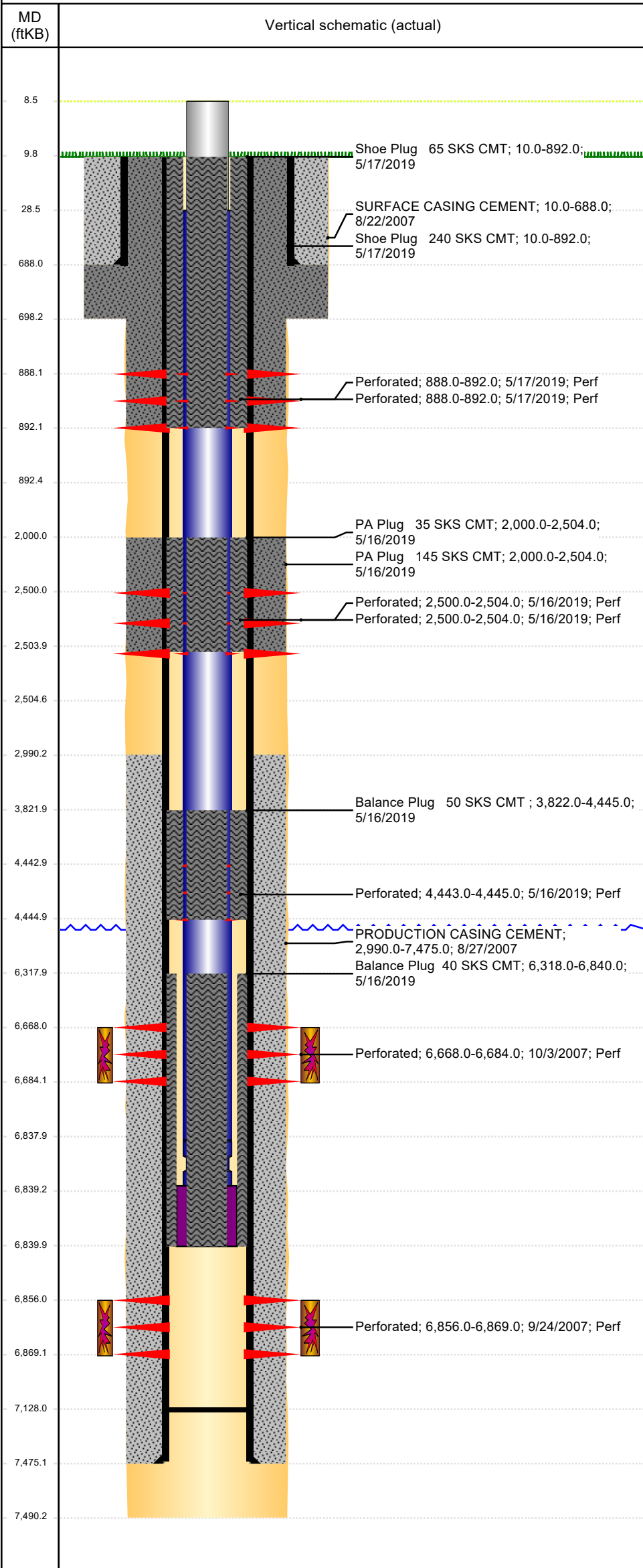


Well Name: **SPIKE D14-09**

VERTICAL, ORIGINAL HOLE, 10/12/2020 3:20:15 PM



Well Header									
API 05-123-25088		Business Unit DJ BASIN		District 15		Well Configuration Type VERTICAL			
KB - GL / MSL (ftKB) 10.00		Spud Date 8/22/2007		P & A Date 6/29/2020		Well Production Status PA		SoRT Yes	
Comment									
Surface Location (Congressional)									
Quarter 3 NE	Quarter 4 SE	Section 14	Township 3	Twnshp N	Range 64	Rng E/W W	Actual Latitude (°) 40.22387891	Actual Longitude (°) -104.51079501	
Wellbore Sections									
Section Des	Size (in)	Act Top, MD (ftKB)	Act Btm, MD (ftKB)						
SURFACE	12 1/4	10	698						
PRODUCTION	7 7/8	698	7,490						
Casing Strings									
Csg Des	Run Date	OD (in)	Wt/Len (lb/ft)	Grade	Top, MD (ftKB)	MD (ftKB)			
Surface Casing	8/22/2007	8 5/8	24.00	J-55	10.0	688.0			
Production	8/27/2007	4 1/2	11.60	N-80	10.0	7,475.0			
Cement									
Des	Start Date	Top (ftKB)	Btm (ftKB)						
SURFACE CASING CEMENT	8/22/2007	10.0	688.0						
PRODUCTION CASING CEMENT	8/27/2007	2,990.0	7,475.0						
Balance Plug 40 SKS CMT	5/16/2019	6,318.0	6,840.0						
Balance Plug 50 SKS CMT	5/16/2019	3,822.0	4,445.0						
PA Plug 145 SKS CMT	5/16/2019	2,000.0	2,504.0						
PA Plug 35 SKS CMT	5/16/2019	2,000.0	2,504.0						
Shoe Plug 240 SKS CMT	5/17/2019	10.0	892.0						
Shoe Plug 65 SKS CMT	5/17/2019	10.0	892.0						
Zone Statuses									
Zone Name	Status Date	Status	Fluid Type	Job			Prod Method		
CODELL	4/5/2010	PR	Water				Flowing		
CODELL	5/16/2019	P&A	Water	PLUG AND ABANDON, 5/16/2019 06:00					
NIOBRARA	9/22/2016	SI							
NIOBRARA	5/16/2019	P&A		PLUG AND ABANDON, 5/16/2019 06:00					
Perforation Data									
Linked Zone	Bnch/Stg	Entered Shot Total	Top (ftKB)	Btm (ftKB)		Date			
NIOBRARA, ORIGINAL HOLE		18	888.00	892.00		5/17/2019			
		18	888.00	892.00		5/17/2019			
		24	2,500.00	2,504.00		5/16/2019			
		24	2,500.00	2,504.00		5/16/2019			
		8	4,443.00	4,445.00		5/16/2019			
		64	6,668.00	6,684.00		10/3/2007			
CODELL, ORIGINAL HOLE		52	6,856.00	6,869.00		9/24/2007			
Stimulation Intervals									
Zone	Start Date	Top (ftKB)	Btm (ftKB)						
NIOBRARA, ORIGINAL HOLE	10/3/2007	6,668.0	6,684.0						
CODELL, ORIGINAL HOLE	10/3/2007	6,856.0	6,869.0						
Other In Hole									
Run Date	Des	Make	OD (in)	Top (ftKB)	Btm (ftKB)				
Logs									
Date	Type			Top, MD (ftKB)	Btm, MD (ftKB)				
8/27/2007	DIFL/DENS/GR/GRD/CAL			688.0	7,482.0				
9/20/2007	Cement Bond			2,870.0	7,406.0				
9/5/2017	GYRO			0.0	6,750.0				
Plug Back Total Depths									
Date	Type	Com			Depth (ftKB)				
7/20/2007		DEPTH-LOGGER/CBL			7,413.0				
1/28/2008	PLUG	DRILL THE PLUG FREE AND PUSH TO 7128'			7,128.0				