

Bayswater Exploration & Production, LLC

Well Name: **East Ault 12-18-19HNA**

Surface Location: East Ault 18-C Pad Sec.18-T7N-R65W

North American Datum 1983 , US State Plane 1983, Colorado Northern Zone

Ground Elevation: 4909.0

+N/-S	+E/-W	Northing	Easting	Latitude	Longitude	Slot
0.0	0.0	1455735.50	3221003.01	40.581671	-104.704339	

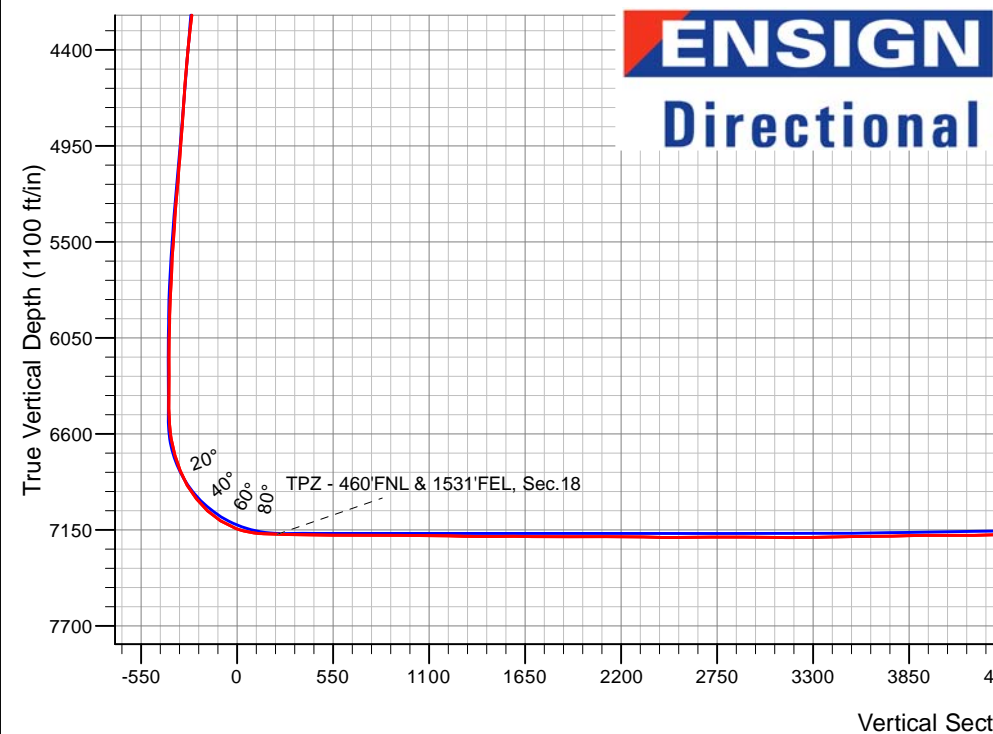
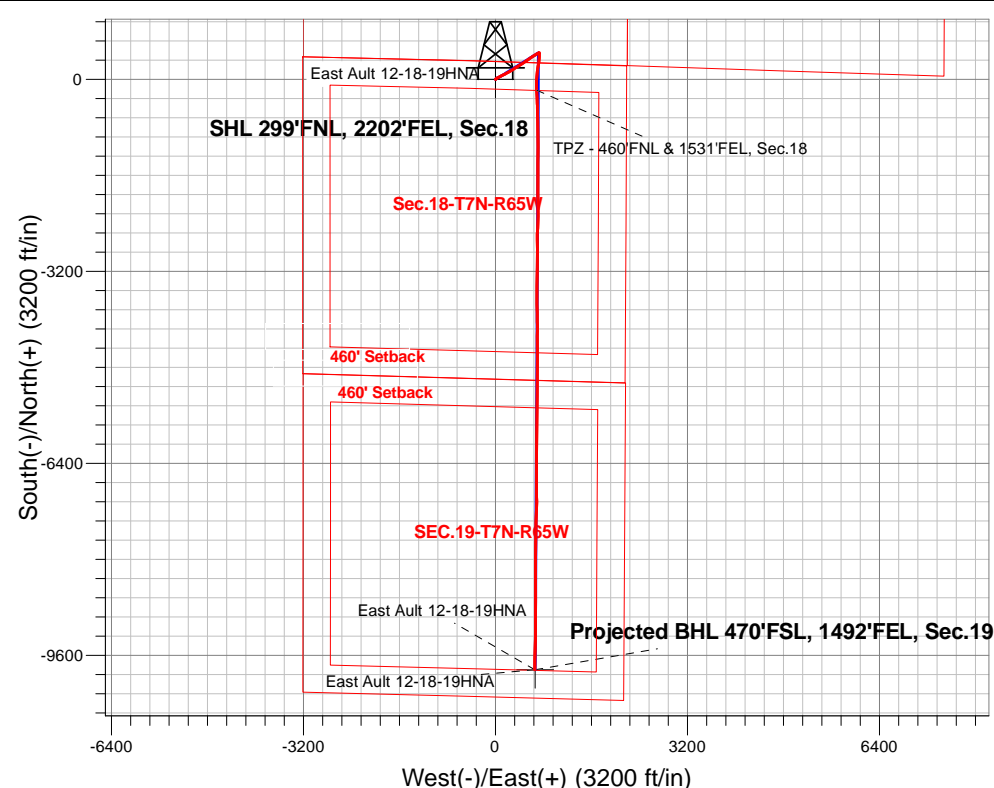
Original Well Elev WELL @ 4934.0ft (Original Well Elev)

FINAL SURVEY

Projected Bottom Hole Location

17,267'MD 7116'TVD 9841'S & 657'E of SHL

92.07 degree Incl @ 179.26 degree AZM



East Ault 18-C Pad Sec.18-T7N-R65W
East Ault 12-18-19HNA
East Ault 12-18-19HNA Wellbore #1
16:34, July 21 2020

ANNOTATIONS

TVD	MD	Annotation
7174.2	7606.3	TPZ - 460'FNL & 1531'FEL, Sec.18

LEGEND

- ▲ East Ault 12-18-19HNA, East Ault 12-18-19HNA Wellbore #1, Plan #4 (7-15-20) V0
- East Ault 12-18-19HNA Wellbore #1
- Survey #1

Projected BHL 470'FSL, 1492'FEL, Sec.19

East Ault 12-18-19HNA

East Ault 12-18-19HNA



Bayswater Exploration & Production, LLC

SEC.18-T7N-R65W

East Ault 18-C Pad Sec.18-T7N-R65W

East Ault 12-18-19HNA

East Ault 12-18-19HNA Wellbore #1

Survey: Survey #1

Standard Survey Report

21 July, 2020



BAYSWATER
EXPLORATION & PRODUCTION, LLC

Company:	Bayswater Exploration & Production, LLC	Local Co-ordinate Reference:	Well East Ault 12-18-19HNA
Project:	SEC.18-T7N-R65W	TVD Reference:	WELL @ 4934.0ft (Original Well Elev)
Site:	East Ault 18-C Pad Sec.18-T7N-R65W	MD Reference:	WELL @ 4934.0ft (Original Well Elev)
Well:	East Ault 12-18-19HNA	North Reference:	True
Wellbore:	East Ault 12-18-19HNA Wellbore #1	Survey Calculation Method:	Minimum Curvature
Design:	East Ault 12-18-19HNA Wellbore #1	Database:	US_EDM

Project	SEC.18-T7N-R65W, Weld County, CO		
Map System:	US State Plane 1983	System Datum:	Mean Sea Level
Geo Datum:	North American Datum 1983		Using Well Reference Point
Map Zone:	Colorado Northern Zone		Using geodetic scale factor

Site		East Ault 18-C Pad Sec.18-T7N-R65W			
Site Position:		Northing:	1,455,737.31 usft	Latitude:	40.581680
From:	Lat/Long	Easting:	3,220,838.00 usft	Longitude:	-104.704933
Position Uncertainty:	0.0 ft	Slot Radius:	13-3/16 "	Grid Convergence:	0.51 °

Well	East Ault 12-18-19HNA					
Well Position	+N/-S	0.0 ft	Northing:	1,455,735.50 usft	Latitude:	40.581671
	+E/-W	0.0 ft	Easting:	3,221,003.01 usft	Longitude:	-104.704339
Position Uncertainty		0.0 ft	Wellhead Elevation:	0.0 ft	Ground Level:	4,909.0 ft

Wellbore	East Ault 12-18-19HNA Wellbore #1				
Magnetics	Model Name	Sample Date	Declination (°)	Dip Angle (°)	Field Strength (nT)
	HDGM	07/15/2020	7.87	66.88	52,138

Design	East Ault 12-18-19HNA Wellbore #1				
Audit Notes:					
Version:	1.0	Phase:	ACTUAL	Tie On Depth:	0.0
Vertical Section:	Depth From (TVD) (ft)	+N/-S (ft)	+E/-W (ft)	Direction (°)	
	0.0	0.0	0.0	176.14	

Survey Program	Date	07/21/2020			
From (ft)	To (ft)	Survey (Wellbore)	Tool Name	Description	
216.0	17,267.0	Survey #1 (East Ault 12-18-19HNA Wellbo	MWD	MWD - Standard	

Survey										
Measured Depth (ft)	Inclination (°)	Azimuth (°)	Vertical Depth (ft)	+N/-S (ft)	+E/-W (ft)	Vertical Section (ft)	Dogleg Rate (°/100usft)	Build Rate (°/100usft)	Turn Rate (°/100usft)	
0.0	0.00	0.00	0.0	0.0	0.0	0.0	0.00	0.00	0.00	
216.0	1.23	96.36	216.0	-0.3	2.3	0.4	0.57	0.57	0.00	
310.0	1.67	85.64	310.0	-0.3	4.7	0.6	0.55	0.47	-11.40	
404.0	1.06	59.98	403.9	0.3	6.8	0.2	0.90	-0.65	-27.30	
499.0	0.97	22.54	498.9	1.5	7.9	-0.9	0.69	-0.09	-39.41	
593.0	1.41	35.89	592.9	3.1	8.8	-2.5	0.55	0.47	14.20	
687.0	1.41	14.10	686.9	5.2	9.8	-4.5	0.57	0.00	-23.18	
782.0	2.64	42.40	781.8	7.9	11.6	-7.1	1.63	1.29	29.79	
876.0	4.66	59.80	875.6	11.5	16.3	-10.3	2.43	2.15	18.51	
971.0	5.54	53.47	970.2	16.1	23.3	-14.5	1.10	0.93	-6.66	

Company:	Bayswater Exploration & Production, LLC	Local Co-ordinate Reference:	Well East Ault 12-18-19HNA
Project:	SEC.18-T7N-R65W	TVD Reference:	WELL @ 4934.0ft (Original Well Elev)
Site:	East Ault 18-C Pad Sec.18-T7N-R65W	MD Reference:	WELL @ 4934.0ft (Original Well Elev)
Well:	East Ault 12-18-19HNA	North Reference:	True
Wellbore:	East Ault 12-18-19HNA Wellbore #1	Survey Calculation Method:	Minimum Curvature
Design:	East Ault 12-18-19HNA Wellbore #1	Database:	US_EDM

Survey										
Measured Depth (ft)	Inclination (°)	Azimuth (°)	Vertical Depth (ft)	+N/-S (ft)	+E/-W (ft)	Vertical Section (ft)	Dogleg Rate (°/100usft)	Build Rate (°/100usft)	Turn Rate (°/100usft)	
1,066.0	5.80	57.34	1,064.8	21.4	31.1	-19.3	0.49	0.27	4.07	
1,160.0	8.00	61.73	1,158.1	27.1	40.8	-24.3	2.41	2.34	4.67	
1,255.0	8.71	63.32	1,252.1	33.5	53.1	-29.8	0.79	0.75	1.67	
1,350.0	8.71	64.90	1,346.0	39.8	66.0	-35.2	0.25	0.00	1.66	
1,444.0	9.23	64.72	1,438.8	46.0	79.3	-40.5	0.55	0.55	-0.19	
1,503.0	8.97	61.91	1,497.1	50.2	87.6	-44.2	0.87	-0.44	-4.76	
1,568.0	9.41	63.07	1,561.3	55.0	96.8	-48.3	0.73	0.68	1.78	
1,662.0	9.41	60.96	1,654.0	62.2	110.4	-54.6	0.37	0.00	-2.24	
1,757.0	9.23	61.31	1,747.7	69.6	123.9	-61.1	0.20	-0.19	0.37	
1,852.0	10.20	66.58	1,841.4	76.6	138.3	-67.1	1.38	1.02	5.55	
1,946.0	10.29	65.17	1,933.9	83.4	153.5	-72.9	0.28	0.10	-1.50	
2,041.0	9.76	62.36	2,027.4	90.7	168.4	-79.2	0.76	-0.56	-2.96	
2,136.0	11.52	62.71	2,120.8	98.8	183.9	-86.2	1.85	1.85	0.37	
2,230.0	11.08	62.01	2,213.0	107.4	200.2	-93.6	0.49	-0.47	-0.74	
2,325.0	10.64	60.78	2,306.3	115.9	216.0	-101.1	0.52	-0.46	-1.29	
2,419.0	9.94	59.37	2,398.8	124.3	230.5	-108.5	0.79	-0.74	-1.50	
2,514.0	9.76	59.20	2,492.4	132.6	244.5	-115.8	0.19	-0.19	-0.18	
2,608.0	9.06	57.09	2,585.1	140.7	257.5	-123.0	0.83	-0.74	-2.24	
2,703.0	10.02	56.56	2,678.8	149.3	270.7	-130.7	1.01	1.01	-0.56	
2,798.0	9.67	56.21	2,772.4	158.3	284.3	-138.8	0.37	-0.37	-0.37	
2,892.0	9.15	55.16	2,865.1	167.0	296.9	-146.6	0.58	-0.55	-1.12	
3,009.0	10.20	59.73	2,980.4	177.5	313.5	-156.0	1.11	0.90	3.91	
3,104.0	10.02	59.55	3,074.0	185.9	327.9	-163.4	0.19	-0.19	-0.19	
3,199.0	8.79	57.44	3,167.7	194.0	341.2	-170.6	1.34	-1.29	-2.22	
3,293.0	9.50	56.56	3,260.5	202.2	353.7	-177.9	0.77	0.76	-0.94	
3,388.0	10.20	62.01	3,354.1	210.4	367.7	-185.2	1.23	0.74	5.74	
3,482.0	9.15	62.89	3,446.8	217.8	381.7	-191.6	1.13	-1.12	0.94	
3,577.0	9.50	59.20	3,540.5	225.2	395.1	-198.1	0.73	0.37	-3.88	
3,671.0	10.11	56.74	3,633.1	233.7	408.7	-205.7	0.79	0.65	-2.62	
3,766.0	11.08	57.09	3,726.5	243.2	423.3	-214.2	1.02	1.02	0.37	
3,861.0	11.87	57.26	3,819.6	253.5	439.2	-223.3	0.83	0.83	0.18	
3,955.0	10.29	54.45	3,911.9	263.6	454.2	-232.4	1.78	-1.68	-2.99	
4,050.0	10.20	55.16	4,005.3	273.3	468.0	-241.2	0.16	-0.09	0.75	
4,144.0	10.46	53.40	4,097.8	283.2	481.7	-250.1	0.43	0.28	-1.87	
4,240.0	10.73	52.87	4,192.2	293.8	495.8	-259.7	0.30	0.28	-0.55	
4,334.0	10.55	52.17	4,284.6	304.3	509.5	-269.3	0.24	-0.19	-0.74	
4,429.0	9.67	51.11	4,378.1	314.7	522.6	-278.8	0.95	-0.93	-1.12	
4,523.0	8.79	49.53	4,470.9	324.3	534.2	-287.6	0.97	-0.94	-1.68	
4,618.0	9.50	58.32	4,564.7	333.1	546.4	-295.6	1.65	0.75	9.25	
4,712.0	10.29	61.66	4,657.3	341.2	560.4	-302.7	1.04	0.84	3.55	
4,806.0	9.50	61.13	4,749.9	348.9	574.6	-309.4	0.85	-0.84	-0.56	
4,901.0	8.62	61.48	4,843.7	356.1	587.7	-315.7	0.93	-0.93	0.37	
4,995.0	9.85	61.83	4,936.5	363.3	601.0	-321.9	1.31	1.31	0.37	
5,089.0	10.55	58.50	5,029.0	371.5	615.4	-329.2	0.97	0.74	-3.54	

Company:	Bayswater Exploration & Production, LLC	Local Co-ordinate Reference:	Well East Ault 12-18-19HNA
Project:	SEC.18-T7N-R65W	TVD Reference:	WELL @ 4934.0ft (Original Well Elev)
Site:	East Ault 18-C Pad Sec.18-T7N-R65W	MD Reference:	WELL @ 4934.0ft (Original Well Elev)
Well:	East Ault 12-18-19HNA	North Reference:	True
Wellbore:	East Ault 12-18-19HNA Wellbore #1	Survey Calculation Method:	Minimum Curvature
Design:	East Ault 12-18-19HNA Wellbore #1	Database:	US_EDM

Survey										
Measured Depth (ft)	Inclination (°)	Azimuth (°)	Vertical Depth (ft)	+N/-S (ft)	+E/-W (ft)	Vertical Section (ft)	Dogleg Rate (°/100usft)	Build Rate (°/100usft)	Turn Rate (°/100usft)	
5,183.0	9.41	58.67	5,121.6	380.0	629.3	-336.8	1.21	-1.21	0.18	
5,278.0	9.50	54.45	5,215.3	388.6	642.3	-344.5	0.74	0.09	-4.44	
5,372.0	8.79	54.28	5,308.1	397.3	654.5	-352.3	0.76	-0.76	-0.18	
5,466.0	6.68	55.16	5,401.2	404.7	664.8	-359.0	2.25	-2.24	0.94	
5,561.0	8.27	55.68	5,495.4	411.7	675.0	-365.3	1.68	1.67	0.55	
5,656.0	6.42	54.80	5,589.6	418.6	685.0	-371.5	1.95	-1.95	-0.93	
5,750.0	6.33	60.43	5,683.0	424.2	693.8	-376.5	0.67	-0.10	5.99	
5,845.0	6.33	62.71	5,777.5	429.2	703.0	-380.8	0.26	0.00	2.40	
5,940.0	5.45	64.82	5,872.0	433.5	711.7	-384.5	0.95	-0.93	2.22	
6,035.0	2.90	56.39	5,966.7	436.7	717.8	-387.4	2.75	-2.68	-8.87	
6,129.0	2.64	72.03	6,060.6	438.7	721.8	-389.1	0.85	-0.28	16.64	
6,224.0	2.64	77.48	6,155.5	439.9	726.1	-389.9	0.26	0.00	5.74	
6,319.0	0.79	73.44	6,250.4	440.5	728.8	-390.4	1.95	-1.95	-4.25	
6,413.0	1.32	82.93	6,344.4	440.8	730.5	-390.6	0.59	0.56	10.10	
6,508.0	1.67	78.18	6,439.4	441.3	733.0	-390.9	0.39	0.37	-5.00	
6,603.0	3.52	167.13	6,534.3	438.7	735.0	-388.2	4.07	1.95	93.63	
6,698.0	9.76	185.41	6,628.6	427.8	734.9	-377.3	6.85	6.57	19.24	
6,793.0	15.39	177.67	6,721.3	407.2	734.6	-356.8	6.17	5.93	-8.15	
6,887.0	22.16	182.77	6,810.3	377.0	734.3	-326.7	7.40	7.20	5.43	
6,981.0	30.69	187.34	6,894.4	335.4	730.3	-285.4	9.32	9.07	4.86	
7,075.0	38.78	188.40	6,971.6	282.4	722.9	-233.1	8.63	8.61	1.13	
7,170.0	48.54	190.16	7,040.2	217.8	712.3	-169.3	10.35	10.27	1.85	
7,264.0	58.04	188.40	7,096.4	143.5	700.2	-96.0	10.22	10.11	-1.87	
7,359.0	68.76	185.06	7,138.8	59.2	690.4	-12.6	11.71	11.28	-3.52	
7,453.0	80.64	181.54	7,163.6	-31.1	685.3	77.2	13.14	12.64	-3.74	
7,547.0	88.46	178.20	7,172.5	-124.6	685.5	170.5	9.04	8.32	-3.55	
7,606.3	88.35	177.65	7,174.2	-183.8	687.7	229.7	0.94	-0.18	-0.93	
TPZ - 460'FNL & 1531'FEL, Sec.18										
7,642.0	88.29	177.32	7,175.2	-219.5	689.2	265.4	0.94	-0.18	-0.93	
7,736.0	88.81	176.97	7,177.6	-313.3	693.9	359.4	0.67	0.55	-0.37	
7,831.0	89.25	176.44	7,179.2	-408.2	699.4	454.3	0.73	0.46	-0.56	
7,925.0	90.04	179.96	7,179.8	-502.1	702.3	548.3	3.84	0.84	3.74	
8,020.0	90.66	179.08	7,179.2	-597.1	703.1	643.1	1.13	0.65	-0.93	
8,114.0	89.34	179.26	7,179.2	-691.1	704.5	737.0	1.42	-1.40	0.19	
8,208.0	88.90	178.03	7,180.7	-785.0	706.7	830.9	1.39	-0.47	-1.31	
8,302.0	89.52	178.73	7,182.0	-879.0	709.3	924.8	0.99	0.66	0.74	
8,397.0	90.31	179.96	7,182.1	-974.0	710.4	1,019.6	1.54	0.83	1.29	
8,491.0	89.34	180.66	7,182.4	-1,068.0	709.9	1,113.4	1.27	-1.03	0.74	
8,585.0	88.81	179.78	7,183.9	-1,162.0	709.6	1,207.1	1.09	-0.56	-0.94	
8,680.0	89.08	181.01	7,185.6	-1,256.9	708.9	1,301.8	1.33	0.28	1.29	
8,774.0	89.43	180.14	7,186.9	-1,350.9	708.0	1,395.5	1.00	0.37	-0.93	
8,869.0	90.13	180.66	7,187.2	-1,445.9	707.3	1,490.3	0.92	0.74	0.55	
8,963.0	90.92	179.96	7,186.4	-1,539.9	706.8	1,584.0	1.12	0.84	-0.74	

Company:	Bayswater Exploration & Production, LLC	Local Co-ordinate Reference:	Well East Ault 12-18-19HNA
Project:	SEC.18-T7N-R65W	TVD Reference:	WELL @ 4934.0ft (Original Well Elev)
Site:	East Ault 18-C Pad Sec.18-T7N-R65W	MD Reference:	WELL @ 4934.0ft (Original Well Elev)
Well:	East Ault 12-18-19HNA	North Reference:	True
Wellbore:	East Ault 12-18-19HNA Wellbore #1	Survey Calculation Method:	Minimum Curvature
Design:	East Ault 12-18-19HNA Wellbore #1	Database:	US_EDM

Survey										
Measured Depth (ft)	Inclination (°)	Azimuth (°)	Vertical Depth (ft)	+N/-S (ft)	+E/-W (ft)	Vertical Section (ft)	Dogleg Rate (°/100usft)	Build Rate (°/100usft)	Turn Rate (°/100usft)	
9,058.0	88.99	180.14	7,186.4	-1,634.9	706.7	1,678.8	2.04	-2.03	0.19	
9,152.0	88.64	178.91	7,188.4	-1,728.9	707.5	1,772.6	1.36	-0.37	-1.31	
9,247.0	89.78	180.14	7,189.7	-1,823.9	708.3	1,867.4	1.77	1.20	1.29	
9,341.0	90.13	179.78	7,189.8	-1,917.9	708.3	1,961.2	0.53	0.37	-0.38	
9,436.0	90.48	178.55	7,189.3	-2,012.9	709.7	2,056.1	1.35	0.37	-1.29	
9,530.0	90.84	178.91	7,188.2	-2,106.8	711.8	2,150.0	0.54	0.38	0.38	
9,624.0	88.55	180.49	7,188.7	-2,200.8	712.3	2,243.8	2.96	-2.44	1.68	
9,719.0	88.55	179.96	7,191.1	-2,295.8	711.9	2,338.5	0.56	0.00	-0.56	
9,814.0	89.52	182.77	7,192.7	-2,390.7	709.7	2,433.1	3.13	1.02	2.96	
9,908.0	90.57	184.18	7,192.6	-2,484.6	704.0	2,526.3	1.87	1.12	1.50	
10,003.0	90.66	181.01	7,191.6	-2,579.4	699.7	2,620.7	3.34	0.09	-3.34	
10,098.0	90.22	179.43	7,190.9	-2,674.4	699.3	2,715.5	1.73	-0.46	-1.66	
10,192.0	90.84	179.61	7,190.0	-2,768.4	700.1	2,809.3	0.69	0.66	0.19	
10,287.0	89.08	180.31	7,190.1	-2,863.4	700.2	2,904.1	1.99	-1.85	0.74	
10,381.0	89.25	179.96	7,191.4	-2,957.4	699.9	2,997.8	0.41	0.18	-0.37	
10,475.0	88.81	179.61	7,193.0	-3,051.4	700.3	3,091.6	0.60	-0.47	-0.37	
10,570.0	89.96	179.78	7,194.0	-3,146.4	700.8	3,186.4	1.22	1.21	0.18	
10,664.0	91.80	181.89	7,192.6	-3,240.4	699.4	3,280.1	2.98	1.96	2.24	
10,759.0	90.66	182.07	7,190.6	-3,335.3	696.1	3,374.6	1.21	-1.20	0.19	
10,853.0	91.36	182.07	7,188.9	-3,429.2	692.7	3,468.1	0.74	0.74	0.00	
10,948.0	91.01	179.96	7,186.9	-3,524.2	691.1	3,562.7	2.25	-0.37	-2.22	
11,043.0	90.66	179.08	7,185.6	-3,619.1	691.9	3,657.5	1.00	-0.37	-0.93	
11,138.0	90.84	178.91	7,184.3	-3,714.1	693.5	3,752.4	0.26	0.19	-0.18	
11,232.0	91.80	178.91	7,182.1	-3,808.1	695.3	3,846.3	1.02	1.02	0.00	
11,326.0	90.13	178.91	7,180.6	-3,902.0	697.1	3,940.1	1.78	-1.78	0.00	
11,421.0	89.78	178.73	7,180.6	-3,997.0	699.1	4,035.0	0.41	-0.37	-0.19	
11,515.0	89.87	179.78	7,180.9	-4,091.0	700.3	4,128.9	1.12	0.10	1.12	
11,610.0	90.84	180.49	7,180.3	-4,186.0	700.1	4,223.7	1.27	1.02	0.75	
11,705.0	91.19	180.14	7,178.7	-4,281.0	699.5	4,318.4	0.52	0.37	-0.37	
11,800.0	91.98	179.78	7,176.0	-4,376.0	699.6	4,413.1	0.91	0.83	-0.38	
11,894.0	92.51	179.78	7,172.3	-4,469.9	700.0	4,506.9	0.56	0.56	0.00	
11,989.0	93.39	179.61	7,167.5	-4,564.8	700.5	4,601.6	0.94	0.93	-0.18	
12,083.0	91.63	179.61	7,163.3	-4,658.7	701.1	4,695.3	1.87	-1.87	0.00	
12,178.0	90.57	181.01	7,161.5	-4,753.6	700.6	4,790.0	1.85	-1.12	1.47	
12,272.0	91.28	180.14	7,160.0	-4,847.6	699.7	4,883.7	1.19	0.76	-0.93	
12,367.0	91.98	180.31	7,157.3	-4,942.6	699.3	4,978.5	0.76	0.74	0.18	
12,462.0	89.87	181.01	7,155.8	-5,037.6	698.2	5,073.1	2.34	-2.22	0.74	
12,556.0	90.31	180.49	7,155.6	-5,131.5	697.0	5,166.8	0.72	0.47	-0.55	
12,650.0	89.87	178.91	7,155.5	-5,225.5	697.4	5,260.7	1.74	-0.47	-1.68	
12,744.0	89.69	181.54	7,155.8	-5,319.5	697.1	5,354.4	2.80	-0.19	2.80	
12,839.0	89.52	181.19	7,156.5	-5,414.5	694.8	5,449.0	0.41	-0.18	-0.37	
12,934.0	89.96	180.49	7,156.9	-5,509.5	693.4	5,543.7	0.87	0.46	-0.74	
13,028.0	90.48	180.14	7,156.6	-5,603.5	692.9	5,637.4	0.67	0.55	-0.37	
13,122.0	91.36	179.61	7,155.0	-5,697.5	693.1	5,731.2	1.09	0.94	-0.56	

Company:	Bayswater Exploration & Production, LLC	Local Co-ordinate Reference:	Well East Ault 12-18-19HNA
Project:	SEC.18-T7N-R65W	TVD Reference:	WELL @ 4934.0ft (Original Well Elev)
Site:	East Ault 18-C Pad Sec.18-T7N-R65W	MD Reference:	WELL @ 4934.0ft (Original Well Elev)
Well:	East Ault 12-18-19HNA	North Reference:	True
Wellbore:	East Ault 12-18-19HNA Wellbore #1	Survey Calculation Method:	Minimum Curvature
Design:	East Ault 12-18-19HNA Wellbore #1	Database:	US_EDM

Survey									
Measured Depth (ft)	Inclination (°)	Azimuth (°)	Vertical Depth (ft)	+N/-S (ft)	+E/-W (ft)	Vertical Section (ft)	Dogleg Rate (°/100usft)	Build Rate (°/100usft)	Turn Rate (°/100usft)
13,217.0	89.34	180.66	7,154.5	-5,792.5	692.9	5,826.0	2.40	-2.13	1.11
13,312.0	89.69	179.61	7,155.3	-5,887.5	692.7	5,920.7	1.17	0.37	-1.11
13,406.0	88.81	181.37	7,156.5	-5,981.4	691.9	6,014.5	2.09	-0.94	1.87
13,501.0	88.55	181.19	7,158.7	-6,076.4	689.7	6,109.1	0.33	-0.27	-0.19
13,595.0	89.34	181.37	7,160.4	-6,170.4	687.6	6,202.7	0.86	0.84	0.19
13,690.0	90.48	180.66	7,160.6	-6,265.3	686.0	6,297.3	1.41	1.20	-0.75
13,785.0	91.89	180.66	7,158.6	-6,360.3	684.9	6,392.0	1.48	1.48	0.00
13,879.0	92.24	179.78	7,155.2	-6,454.2	684.5	6,485.7	1.01	0.37	-0.94
13,974.0	90.31	180.66	7,153.1	-6,549.2	684.1	6,580.4	2.23	-2.03	0.93
14,069.0	90.04	179.96	7,152.8	-6,644.2	683.6	6,675.2	0.79	-0.28	-0.74
14,164.0	90.57	179.61	7,152.3	-6,739.2	684.0	6,770.0	0.67	0.56	-0.37
14,258.0	91.10	178.73	7,150.9	-6,833.2	685.3	6,863.8	1.09	0.56	-0.94
14,353.0	89.16	179.43	7,150.7	-6,928.2	686.9	6,958.7	2.17	-2.04	0.74
14,448.0	90.04	178.91	7,151.4	-7,023.2	688.2	7,053.6	1.08	0.93	-0.55
14,542.0	87.76	180.31	7,153.2	-7,117.1	688.9	7,147.4	2.85	-2.43	1.49
14,636.0	88.55	181.89	7,156.2	-7,211.1	687.1	7,241.0	1.88	0.84	1.68
14,731.0	88.55	182.25	7,158.6	-7,306.0	683.6	7,335.4	0.38	0.00	0.38
14,825.0	89.16	181.72	7,160.5	-7,399.9	680.4	7,428.9	0.86	0.65	-0.56
14,919.0	91.01	182.42	7,160.4	-7,493.8	677.0	7,522.4	2.10	1.97	0.74
15,014.0	91.54	182.42	7,158.2	-7,588.7	673.0	7,616.8	0.56	0.56	0.00
15,109.0	91.89	181.37	7,155.4	-7,683.6	669.8	7,711.3	1.16	0.37	-1.11
15,203.0	92.51	181.01	7,151.8	-7,777.5	667.9	7,804.9	0.76	0.66	-0.38
15,297.0	91.01	180.66	7,148.9	-7,871.5	666.5	7,898.5	1.64	-1.60	-0.37
15,391.0	91.01	179.26	7,147.2	-7,965.5	666.6	7,992.3	1.49	0.00	-1.49
15,486.0	91.19	179.61	7,145.4	-8,060.4	667.5	8,087.1	0.41	0.19	0.37
15,580.0	91.36	178.73	7,143.3	-8,154.4	668.9	8,180.9	0.95	0.18	-0.94
15,675.0	91.28	178.03	7,141.1	-8,249.3	671.6	8,275.8	0.74	-0.08	-0.74
15,769.0	90.75	180.49	7,139.5	-8,343.3	672.8	8,369.7	2.68	-0.56	2.62
15,863.0	91.36	180.14	7,137.7	-8,437.3	672.3	8,463.4	0.75	0.65	-0.37
15,958.0	91.80	179.61	7,135.1	-8,532.3	672.5	8,558.2	0.72	0.46	-0.56
16,053.0	90.75	181.01	7,133.0	-8,627.2	672.0	8,652.9	1.84	-1.11	1.47
16,147.0	91.36	180.49	7,131.3	-8,721.2	670.7	8,746.6	0.85	0.65	-0.55
16,242.0	91.80	179.61	7,128.7	-8,816.2	670.6	8,841.3	1.04	0.46	-0.93
16,337.0	89.43	180.49	7,127.6	-8,911.1	670.6	8,936.1	2.66	-2.49	0.93
16,431.0	89.34	181.01	7,128.7	-9,005.1	669.3	9,029.8	0.56	-0.10	0.55
16,526.0	89.87	180.49	7,129.3	-9,100.1	668.1	9,124.5	0.78	0.56	-0.55
16,620.0	90.22	179.96	7,129.2	-9,194.1	667.7	9,218.2	0.68	0.37	-0.56
16,715.0	90.66	179.78	7,128.5	-9,289.1	667.9	9,313.0	0.50	0.46	-0.19
16,810.0	90.40	181.54	7,127.6	-9,384.1	666.8	9,407.7	1.87	-0.27	1.85
16,904.0	91.36	182.95	7,126.2	-9,478.0	663.2	9,501.2	1.81	1.02	1.50
16,999.0	91.01	182.25	7,124.2	-9,572.9	658.9	9,595.5	0.82	-0.37	-0.74
17,093.0	91.63	180.66	7,122.1	-9,666.8	656.5	9,689.1	1.82	0.66	-1.69
17,188.0	91.98	179.43	7,119.1	-9,761.8	656.4	9,783.8	1.35	0.37	-1.29

Company:	Bayswater Exploration & Production, LLC	Local Co-ordinate Reference:	Well East Ault 12-18-19HNA
Project:	SEC.18-T7N-R65W	TVD Reference:	WELL @ 4934.0ft (Original Well Elev)
Site:	East Ault 18-C Pad Sec.18-T7N-R65W	MD Reference:	WELL @ 4934.0ft (Original Well Elev)
Well:	East Ault 12-18-19HNA	North Reference:	True
Wellbore:	East Ault 12-18-19HNA Wellbore #1	Survey Calculation Method:	Minimum Curvature
Design:	East Ault 12-18-19HNA Wellbore #1	Database:	US_EDM

Survey									
Measured Depth (ft)	Inclination (°)	Azimuth (°)	Vertical Depth (ft)	+N/-S (ft)	+E/-W (ft)	Vertical Section (ft)	Dogleg Rate (°/100usft)	Build Rate (°/100usft)	Turn Rate (°/100usft)
17,207.0	92.07	179.26	7,118.4	-9,780.8	656.6	9,802.8	1.01	0.47	-0.89
17,267.0	92.07	179.26	7,116.2	-9,840.7	657.4	9,862.7	0.00	0.00	0.00

Design Targets									
Target Name	Dip Angle (°)	Dip Dir. (°)	TVD (ft)	+N/-S (ft)	+E/-W (ft)	Northing (usft)	Easting (usft)	Latitude	Longitude
- hit/miss target									
- Shape									
SHL 299'FNL, 2202'FEL	0.00	0.00	1.0	0.0	0.0	1,455,735.51	3,221,003.01	40.581671	-104.704339
- survey hits target center									
- Point									
BHL 470'FSL, 1485'FEL	0.00	0.00	7,109.0	-9,841.1	664.4	1,445,901.09	3,221,755.68	40.554659	-104.701948
- survey misses target center by 10.1ft at 17267.0ft MD (7116.2 TVD, -9840.7 N, 657.4 E)									
- Point									

Survey Annotations				
Measured Depth (ft)	Vertical Depth (ft)	Local Coordinates		Comment
		+N/-S (ft)	+E/-W (ft)	
7,606.3	7,174.2	-183.8	687.7	TPZ - 460'FNL & 1531'FEL, Sec.18

Checked By: _____ Approved By: _____ Date: _____