



Bayswater Exploration & Production, LLC

East Ault 12-18-19HNA

API # 05-123-47065

Production

July 20, 2020

Quote #: QUO-46421-R3T9P4

Execution #: EXC-26521-F5K9D502



Bayswater Exploration & Production, LLC

Attention: Mr. Trevor Smith | (720) 335-9045 | trevor.smith@iptenergyservices.com

Bayswater Exploration & Production | 730 17th Street, Suite 610 | Denver, CO. 80202

Dear Mr. Trevor Smith,

Thank you for the opportunity to provide cementing services on this well. BJ Services strives to achieve complete customer satisfaction. If you have any questions regarding the services or data provided, please contact BJ Services at any time.

Sincerely,
Jason Creel
Field Engineer | (307) 365-9038 | Jason.Creel@bjservices.com

Field Office 1716 East Allison Rd., Cheyenne WY, 82007
Phone: (307) 459-6487

Sales Office 999 18th St. Suite 1200 Denver, CO 80202
Phone: (281) 408-2361

BJ Cementing Treatment Report

SERVICE SUPERVISOR	Richard White	RIG	True 38
CLIENT FIELD REPRESENTATIVE	Bayswater	COUNTY	WELD
DISTRICT	Cheyenne, WY	STATE / PROVINCE	CO
SERVICE	Cementing		

WELL GEOMETRY

TYPE	ID (in)	OD (in)	WEIGHT (lb/ft)	MD (ft)	TVD (ft)	EXCESS (%)
Casing	4.78	5.50	20.00	17,254.49	7,000.00	
Previous Casing	8.92	9.63	36.00	1,553.00	1,553.00	
Open Hole	8.50	0.00	0.00	17,254.49	7,000.00	7.00

HARDWARE

Bottom Plug Used?	No	Tool Depth (ft)	17,228.18
Top Plug Used?	Yes	Max Tubing Pressure - Rated (psi)	3000.00
Top Plug Provided By	Non BJ	Max Tubing Pressure - Operated (psi)	3000.00
Top Plug Size	5.500	Max Casing Pressure - Rated (psi)	12630.00
Centralizers Used	No	Max Casing Pressure - Operated (psi)	3000.00
Centralizers Quantity	210.00	Pipe Movement	None
Centralizers Type	Rigid	Job Pumped Through	Manifold
Landing Collar Depth (ft)	17,228	Top Connection Thread	BTC
Centralizers Type	Rigid	Top Connection Size	5.5
Tool Type	Float Collar		

CIRCULATION PRIOR TO JOB

Well Circulated By	Rig	YP Mud In	8
Circulation Prior to Job	Yes	YP Mud Out	8
Circulation Time (min)	180.00	Solids Present at End of Circulation	No
Circulation Rate (bpm)	10.00	10 sec SGS	8
Circulation Volume (bbls)	1800.00	10 min SGS	13
Lost Circulation Prior to Cement Job	No	30 min SGS	15
Mud Density In (ppg)	10.00	Flare Prior to / during the Cement Job	No
Mud Density Out (ppg)	10.00	Gas Present	No
PV Mud In	17	Gas Units	
PV Mud Out	17		

TEMPERATURE

Ambient Temperature (°F)	90.00	Slurry Cement Temperature (°F)	70.00
Mix Water Temperature (°F)	70.00	Flow Line Temperature (°F)	70.00

FLUID DETAILS

FLUID TYPE	FLUID NAME	DENSITY (ppg)	YIELD (Cu Ft/sk)	H ₂ O REQ (gals/sk)	PLN TOP FLD (ft)	LENGTH (ft)	VOL (sk)	VOL (Cu Ft)	VOL (bbls)
Spacer / Pre Flush / Flush	IntegraGuard EZ Spacer II	12.0000			0.00				28.0000
Spacer / Pre Flush / Flush	IntegraGuard EZ Spacer II	11.5000			0.00				26.0000
Spacer / Pre Flush / Flush	IntegraGuard EZ Spacer II	11.0000			0.00				26.0000
Lead Slurry	BJCem P100.3.01C	13.2000	1.8290	9.86	0.00	6,753.00	925	1692.0000	301.3000
Tail Slurry	BJCem P50.6.02C	13.5000	1.4769	7.45	6,753.00	10,476.00	1740	2570.0000	457.6000
Displacement 2	Retarded Water + Chems	8.3331				0.00	0	0.0000	10.0000
Displacement Final	Water + Chems	8.3331			0.00			0.0000	371.8000

Client: Bayswater Exploration & Production, LLC

Well: EAST AULT 12-18-19HNA

Well API: 05-123-47065

Start Date: 7/20/2020

End Date: 7/21/2020

Field Ticket #:



FLUID TYPE	FLUID NAME	COMPONENT	CONCENTRATION	UOM
Spacer / Pre Flush / Flush	IntegraGuard EZ Spacer II	RETARDER, R-31	0.5000	PPB
Spacer / Pre Flush / Flush	IntegraGuard EZ Spacer II	WEIGHTING ADDITIVE, W-11	242.6900	PPB
Spacer / Pre Flush / Flush	IntegraGuard EZ Spacer II	IntegraGuard GW-86	1.2000	PPB
Spacer / Pre Flush / Flush	IntegraGuard EZ Spacer II	SPACER SURFACTANT, SS-267	1.0000	GPB
Spacer / Pre Flush / Flush	IntegraGuard EZ Spacer II	RETARDER, R-7C	2.0000	PPB
Spacer / Pre Flush / Flush	IntegraGuard EZ Spacer II	SPACER SURFACTANT, SS-267	1.0000	GPB
Spacer / Pre Flush / Flush	IntegraGuard EZ Spacer II	RETARDER, R-7C	2.0000	PPB
Spacer / Pre Flush / Flush	IntegraGuard EZ Spacer II	WEIGHTING ADDITIVE, W-11	242.6900	PPB
Spacer / Pre Flush / Flush	IntegraGuard EZ Spacer II	RETARDER, R-31	0.5000	PPB
Spacer / Pre Flush / Flush	IntegraGuard EZ Spacer II	IntegraGuard GW-86	1.2000	PPB
Spacer / Pre Flush / Flush	IntegraGuard EZ Spacer II	WEIGHTING ADDITIVE, W-11	242.6900	PPB
Spacer / Pre Flush / Flush	IntegraGuard EZ Spacer II	IntegraGuard GW-86	1.2000	PPB
Spacer / Pre Flush / Flush	IntegraGuard EZ Spacer II	RETARDER, R-7C	2.0000	PPB
Spacer / Pre Flush / Flush	IntegraGuard EZ Spacer II	RETARDER, R-31	0.5000	PPB
Spacer / Pre Flush / Flush	IntegraGuard EZ Spacer II	SPACER SURFACTANT, SS-267	1.0000	GPB
Lead Slurry	BJCem P100.3.01C	FLUID LOSS, FL-66	0.5000	BWOB
Lead Slurry	BJCem P100.3.01C	CEMENT, ASTM TYPE III	100.0000	PCT
Lead Slurry	BJCem P100.3.01C	IntegraCare EC-2	3.0000	BWOB
Lead Slurry	BJCem P100.3.01C	FOAM PREVENTER, FP-24	0.3000	BWOB
Lead Slurry	BJCem P100.3.01C	IntegraGuard GW-86	0.1000	BWOB
Lead Slurry	BJCem P100.3.01C	RETARDER, SR-20	0.7000	BWOB
Tail Slurry	BJCem P50.6.02C	CEMENT, CLASS G	50.0000	PCT
Tail Slurry	BJCem P50.6.02C	IntegraGuard GW-86	0.1000	BWOB
Tail Slurry	BJCem P50.6.02C	FLUID LOSS, FL-66	0.2000	BWOB
Tail Slurry	BJCem P50.6.02C	RETARDER, SR-20	0.1000	BWOB
Tail Slurry	BJCem P50.6.02C	FOAM PREVENTER, FP-24	0.3000	BWOB
Tail Slurry	BJCem P50.6.02C	CEMENT, FLY ASH (ROCKIES)	50.0000	PCT
Tail Slurry	BJCem P50.6.02C	EXTENDER, BENTONITE	2.0000	BWOB
Displacement 2	Retarded Water + Chems	CORROSION INHIBITORS, CI-27	0.2100	GPB
Displacement 2	Retarded Water + Chems	BIOCIDE, BIOC11139W	0.0100	GPB
Displacement 2	Retarded Water + Chems	RETARDER, SR-61L	0.1000	GPB
Displacement 2	Retarded Water + Chems	OXYGEN SCAVENGER, OS-30	0.1680	GPB
Displacement 2	Retarded Water + Chems	ResCare CS-2	0.0800	GPB
Displacement Final	Water + Chems	BIOCIDE, BIOC11139W	0.0100	GPB
Displacement Final	Water + Chems	CORROSION INHIBITORS, CI-27	0.2100	GPB
Displacement Final	Water + Chems	OXYGEN SCAVENGER, OS-30	0.1680	GPB
Displacement Final	Water + Chems	ResCare CS-2	0.0800	GPB

Client: Bayswater Exploration & Production, LLC

Well: EAST AULT 12-18-19HNA

Well API: 05-123-47065

Start Date: 7/20/2020

End Date: 7/21/2020

Field Ticket #:



DISPLACEMENT AND END OF JOB SUMMARY

Displaced By	BJ	Amt of Cement Returned / Reversed	31.00
Calculated Displacement Vol (bbls)	380.74	Method Used to Verify Returns	Visual
Actual Displacement Vol (bbls)	380.74	Amt of Spacer to Surface	80.00
Did Float Hold?	Yes	Pressure Left on Casing (psi)	0.00
Bump Plug	No	Amt Bled Back After Job	4.00
Bump Plug Pressure (psi)	2400.00	Total Volume Pumped (bbls)	1226.00
Were Returns Planned at Surface	No	Top Out Cement Spotted	No
Cement Returns During Job	Full	Lost Circulation During Cement Job	No

BJ Cementing Event Log

Long String - Cheyenne, WY - Richard White

SEQ	START DATE / TIME	EVENT	DENSITY (ppg)	PUMP RATE (bpm)	PUMP VOL (bbls)	PIPE PRESSURE (psi)	COMMENTS
1	07/20/2020 07:09	Callout					crew called out checked and verified equipment and materials
2	07/20/2020 08:00	Depart for Location					steacs breifing and leave for location
3	07/20/2020 10:00	Arrive on Location					arrive on location test mix water
4	07/20/2020 10:15	STEACS Briefing					pre rig up saftey meeting
5	07/20/2020 10:30	Rig Up					rig up all treating equipment
6	07/20/2020 11:00	Other (See comment)					wait for rig to finish running casing and circulating
7	07/20/2020 13:00	STEACS Briefing					saftey meeting with rig crew and customer
8	07/20/2020 13:20	Prime Up	8.3300	4.00	5.00	460.00	fill lines with 5 bbl water
9	07/20/2020 13:22	Pressure Test					pressure test to PSI
10	07/20/2020 13:24	Pump Spacer	12.0000	4.50	28.00	450.00	Pump 28 bbl spacer @ 12ppg w/ surfactans from FP of CTF-006 wet and dry samples taken and verified
11	07/20/2020 13:31	Pump Spacer	11.5000	4.50	26.00	450.00	Pump 26 bbl spacer @ 11.5ppg w/ surfactans from FP of CTF-006 wet and dry samples taken and verified
12	07/20/2020 13:38	Pump Spacer	11.0000	4.50	26.00	400.00	Pump 26 bbl spacer @ 11ppg w/ surfactans from FP of CTF-006 wet and dry samples taken and verified
13	07/20/2020 13:47	Pump Lead Cement	13.2000		301.30		Pump 301.3 bbl cmt @ 13.2ppg 1.8290y 925 sks 9.86 gps From silo 449 wet and dry samples taken and verified

Client: Bayswater Exploration & Production, LLC

Well Name / API: EAST AULT 12-18-19HNA / 05-123-47065

Well MD: 17254.49

Quote #: QUO-46421-R3T9P4

Plan #: ORD-26521-F5K9D5

Execution #: EXC-26521-F5K9D502



SEQ	START DATE / TIME	EVENT	DENSITY (ppg)	PUMP RATE (bpm)	PUMP VOL (bbls)	PIPE PRESSURE (psi)	COMMENTS
14	07/20/2020 13:49	Other (See comment)					Shut down for 2 minutes due to bad delivery on silo fixed and continued
15	07/20/2020 14:09	Other (See comment)					Connection on cmt head started to leak shutdown to fix
16	07/20/2020 14:40	Pump Tail Cement	13.5000	6.00	194.60	600.00	Pump 194.6 bbl cmt @13.5ppg 1.4769y 740 sks 7.45gps From silo CTS-453 wet and dry samples taken and verified
17	07/20/2020 15:06	Pump Tail Cement	13.5000	6.00	263.00	500.00	Pump 263.0 bbl cmt @13.5ppg 1.4769y 1000 sks 7.45gps From silo CTS-664 wet and dry samples taken and verified
18	07/20/2020 15:53	Pump Tail Cement	13.5000		457.60		Pump 457.6 bbl cmt @ 13.5ppg 1740sks 1.4769y 7.45gps
19	07/20/2020 15:54	Wash Pumps and Lines					wash pumps and lines to pit
20	07/20/2020 15:58	Drop Top Plug					drop top plug
21	07/20/2020 16:00	Pump Displacement	8.3300	8.00	360.00	2000.00	Pump 360 bbl disp. with chemicals/ shutdown @ 268 to move from active pit
22	07/20/2020 16:32	Pump Displacement	8.3300	4.00	20.74	2300.00	Pump 20.74 bbl disp. with chemicals
23	07/20/2020 16:52	Pump Displacement					pump a total of 380.74 bbl of disp. saw 80 bbl spacer and 31 bbl of cmt to surface
24	07/20/2020 16:53	Land Plug					landed plug @ 2400 psi took to 3000 psi
25	07/20/2020 16:56	Check Floats					floats held 4 bbl back
26	07/20/2020 17:00	Rig Down					
27	07/20/2020 17:10	Leave Location					

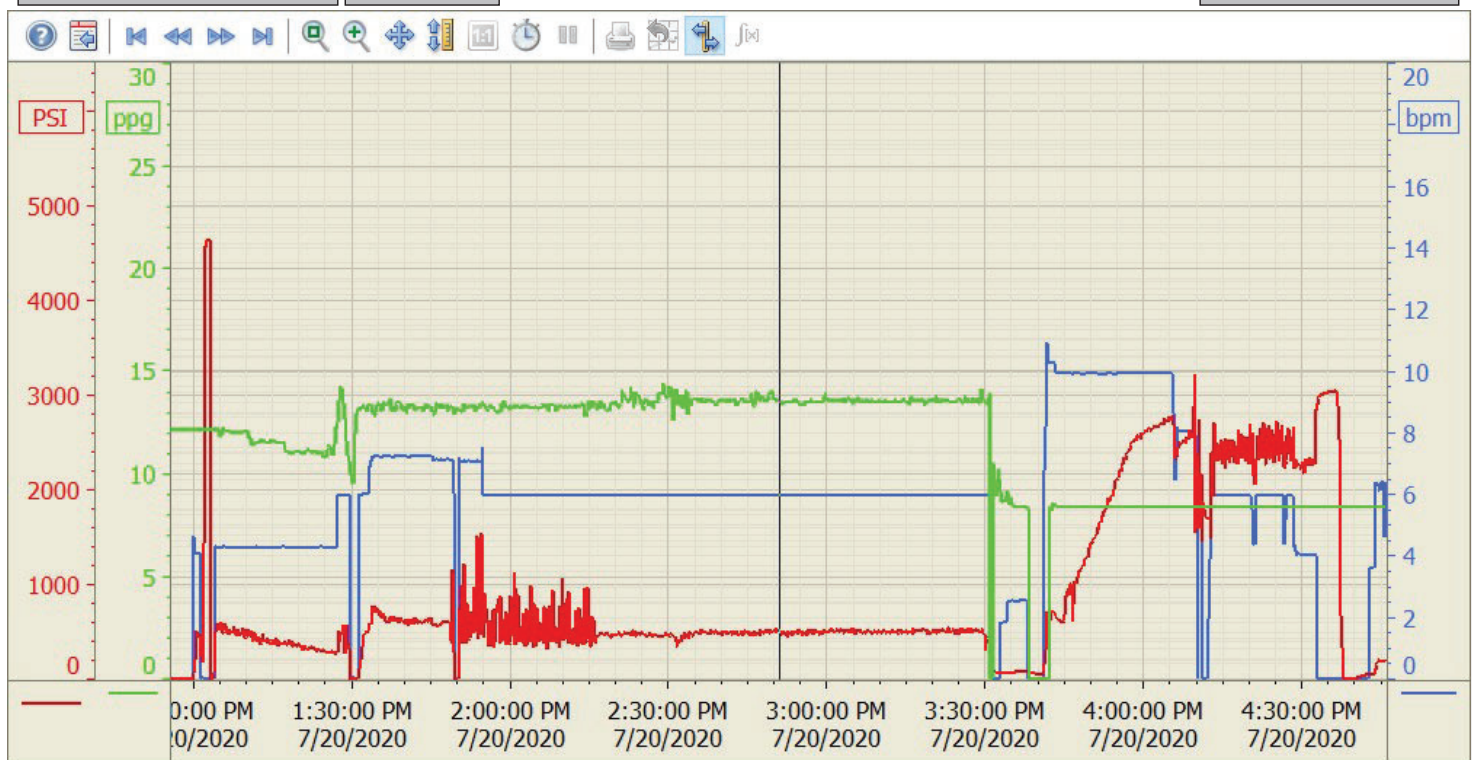
Summary Trend

Bayswater

East Ault 12-18



Lease: East Ault



7/20/2020 5:04:54 PM