



Bayswater Exploration & Production, LLC

East Ault 11-18-19HNC

API # 05-123-47070

Production

July 15, 2020

Quote #: QUO-46331-H0L0F0

Execution #: EXC-26500-T8M4Z602



Bayswater Exploration & Production, LLC

Attention: Mr. Trevor Smith | (720) 335-9045 | trevor.smith@iptenergyservices.com

Bayswater Exploration & Production | 730 17th Street, Suite 610 | Denver, CO. 80202

Dear Mr. Trevor Smith,

Thank you for the opportunity to provide cementing services on this well. BJ Services strives to achieve complete customer satisfaction. If you have any questions regarding the services or data provided, please contact BJ Services at any time.

Sincerely,
Jason Creel
Field Engineer | (307) 365-9038 | Gage.Putnam@bjservices.com

Field Office 1716 East Allison Rd., Cheyenne WY, 82007
Phone: (307) 459-6487

Sales Office 999 18th St. Suite 1200 Denver, CO 80202
Phone: (281) 408-2361

BJ Cementing Treatment Report

SERVICE SUPERVISOR	Brian Boyd	FORMATION	Nio C
CLIENT FIELD REPRESENTATIVE	Tom	RIG	True 38
DISTRICT	Cheyenne, WY	COUNTY	WELD
SERVICE	Cementing	STATE / PROVINCE	CO

WELL GEOMETRY

TYPE	ID (in)	OD (in)	WEIGHT (lb/ft)	MD (ft)	TVD (ft)	EXCESS (%)
Open Hole	8.50	0.00	0.00	17,340.00	7,308.00	7.00
Previous Casing	8.92	9.63	36.00	1,551.00	1,551.00	
Casing	4.78	5.50	20.00	17,335.00	7,308.00	

HARDWARE

Bottom Plug Used?	No	Tool Type	Float Collar
Top Plug Used?	Yes	Tool Depth (ft)	17,308.00
Top Plug Provided By	Non BJ	Max Casing Pressure - Rated (psi)	11017.00
Top Plug Size	5.500	Max Casing Pressure - Operated (psi)	8818.00
Centralizers Used	Yes	Pipe Movement	None
Centralizers Quantity	205.00	Job Pumped Through	Manifold
Centralizers Type	Rigid	Top Connection Thread	BTC
Landing Collar Depth (ft)	17,308	Top Connection Size	5.5

CIRCULATION PRIOR TO JOB

Well Circulated By	Rig	YP Mud In	8
Circulation Prior to Job	Yes	Solids Present at End of Circulation	No
Circulation Time (min)	160.00	10 sec SGS	8
Circulation Rate (bpm)	8.00	10 min SGS	12
Circulation Volume (bbls)	1280.00	30 min SGS	14
Lost Circulation Prior to Cement Job	No	Flare Prior to / during the Cement Job	No
Mud Density In (ppg)	10.00	Gas Present	No
PV Mud In	18		

TEMPERATURE

Ambient Temperature (°F)	65.00	Slurry Cement Temperature (°F)	64.00
Mix Water Temperature (°F)	60.00	Flow Line Temperature (°F)	122.00

FLUID DETAILS

FLUID TYPE	FLUID NAME	DENSITY (ppg)	YIELD (Cu Ft/sk)	H ₂ O REQ (gals/sk)	PLN TOP FLD (ft)	LENGTH (ft)	VOL (sk)	VOL (Cu Ft)	VOL (bbls)
Spacer / Pre Flush / Flush	IntegraGuard EZ Spacer II	12.0000			0.00				28.0000
Spacer / Pre Flush / Flush	IntegraGuard EZ Spacer II	11.5000			0.00				26.0000
Spacer / Pre Flush / Flush	IntegraGuard EZ Spacer II	11.0000			0.00				26.0000
Lead Slurry	BJCem P100.3.01C	13.2000	1.8290	9.86	0.00	6,753.00	925	1692.0000	301.3000
Tail Slurry	BJCem P50.6.02C	13.5000	1.4769	7.45	6,753.00	10,587.00	1755	2592.0000	461.6000
Displacement 2	Retarded Water + Chems	8.3331				0.00	0	0.0000	10.0000
Displacement Final	Water + Chems	8.3331			0.00			0.0000	374.3000

FLUID TYPE	FLUID NAME	COMPONENT	CONCENTRATION	UOM
Spacer / Pre Flush / Flush	IntegraGuard EZ Spacer II	WEIGHTING ADDITIVE, W-11	242.6900	PPB
Spacer / Pre Flush / Flush	IntegraGuard EZ Spacer II	RETARDER, R-7C	2.0000	PPB
Spacer / Pre Flush / Flush	IntegraGuard EZ Spacer II	SPACER SURFACTANT, SS-267	1.0000	GPB
Spacer / Pre Flush / Flush	IntegraGuard EZ Spacer II	RETARDER, R-31	0.5000	PPB
Spacer / Pre Flush / Flush	IntegraGuard EZ Spacer II	IntegraGuard GW-86	1.2000	PPB
Spacer / Pre Flush / Flush	IntegraGuard EZ Spacer II	IntegraGuard GW-86	1.2000	PPB
Spacer / Pre Flush / Flush	IntegraGuard EZ Spacer II	RETARDER, R-7C	2.0000	PPB
Spacer / Pre Flush / Flush	IntegraGuard EZ Spacer II	SPACER SURFACTANT, SS-267	1.0000	GPB
Spacer / Pre Flush / Flush	IntegraGuard EZ Spacer II	RETARDER, R-31	0.5000	PPB
Spacer / Pre Flush / Flush	IntegraGuard EZ Spacer II	WEIGHTING ADDITIVE, W-11	242.6900	PPB
Spacer / Pre Flush / Flush	IntegraGuard EZ Spacer II	WEIGHTING ADDITIVE, W-11	242.6900	PPB
Spacer / Pre Flush / Flush	IntegraGuard EZ Spacer II	RETARDER, R-7C	2.0000	PPB
Spacer / Pre Flush / Flush	IntegraGuard EZ Spacer II	RETARDER, R-31	0.5000	PPB
Spacer / Pre Flush / Flush	IntegraGuard EZ Spacer II	SPACER SURFACTANT, SS-267	1.0000	GPB
Spacer / Pre Flush / Flush	IntegraGuard EZ Spacer II	IntegraGuard GW-86	1.2000	PPB
Lead Slurry	BJCem P100.3.01C	IntegraGuard GW-86	0.1000	BWOB
Lead Slurry	BJCem P100.3.01C	CEMENT, ASTM TYPE III	100.0000	PCT
Lead Slurry	BJCem P100.3.01C	IntegraCare EC-2	3.0000	BWOB
Lead Slurry	BJCem P100.3.01C	FOAM PREVENTER, FP-24	0.3000	BWOB
Lead Slurry	BJCem P100.3.01C	RETARDER, SR-20	0.7000	BWOB
Lead Slurry	BJCem P100.3.01C	FLUID LOSS, FL-66	0.5000	BWOB
Tail Slurry	BJCem P50.6.02C	FLUID LOSS, FL-66	0.2000	BWOB
Tail Slurry	BJCem P50.6.02C	EXTENDER, BENTONITE	2.0000	BWOB
Tail Slurry	BJCem P50.6.02C	FOAM PREVENTER, FP-24	0.3000	BWOB
Tail Slurry	BJCem P50.6.02C	CEMENT, FLY ASH (ROCKIES)	50.0000	PCT
Tail Slurry	BJCem P50.6.02C	IntegraGuard GW-86	0.1000	BWOB
Tail Slurry	BJCem P50.6.02C	CEMENT, CLASS G	50.0000	PCT
Tail Slurry	BJCem P50.6.02C	RETARDER, SR-20	0.1000	BWOB
Displacement 2	Retarded Water + Chems	RETARDER, SR-61L	0.1000	GPB
Displacement 2	Retarded Water + Chems	OXYGEN SCAVENGER, OS-30	0.1680	GPB
Displacement 2	Retarded Water + Chems	CORROSION INHIBITORS, CI-27	0.2100	GPB
Displacement 2	Retarded Water + Chems	BIOCIDE, BIOC11139W	0.0100	GPB
Displacement 2	Retarded Water + Chems	ResCare CS-2	0.0800	GPB
Displacement Final	Water + Chems	CORROSION INHIBITORS, CI-27	0.2100	GPB
Displacement Final	Water + Chems	BIOCIDE, BIOC11139W	0.0100	GPB
Displacement Final	Water + Chems	OXYGEN SCAVENGER, OS-30	0.1680	GPB
Displacement Final	Water + Chems	ResCare CS-2	0.0800	GPB

Client: Bayswater Exploration & Production, LLC

Well: EAST AULT 11-18-19HNC

Well API: 05-123-47070

Start Date: 7/15/2020

End Date: 7/15/2020

Field Ticket #:



DISPLACEMENT AND END OF JOB SUMMARY

Displaced By	BJ	Amt of Cement Returned / Reversed	59.00
Calculated Displacement Vol (bbls)	384.00	Method Used to Verify Returns	Visual
Actual Displacement Vol (bbls)	379.00	Amt of Spacer to Surface	80.00
Did Float Hold?	Yes	Pressure Left on Casing (psi)	0.00
Bump Plug	Yes	Amt Bled Back After Job	4.00
Bump Plug Pressure (psi)	3000.00	Total Volume Pumped (bbls)	1221.00
Were Returns Planned at Surface	Yes	Top Out Cement Spotted	No
Cement Returns During Job	Full	Lost Circulation During Cement Job	No

BJ Cementing Event Log

Long String - Cheyenne, WY - Brian Boyd

SEQ	START DATE / TIME	EVENT	DENSITY (ppg)	PUMP RATE (bpm)	PUMP VOL (bbls)	PIPE PRESSURE (psi)	COMMENTS
1	07/15/2020 01:30	Callout					Customer called out and requested on location time of 7:30
2	07/15/2020 02:30	Depart for Location					BJ crew has Joureny mangement and departs from shop to location
3	07/15/2020 04:30	Arrive on Location					BJ crew arrives on location and meet with company man
4	07/15/2020 04:45	STEACS Briefing					BJ crew has steacs over rigging up iron and hoses
5	07/15/2020 05:00	Rig Up					BJ crew rigs up iron and hoses
6	07/15/2020 06:05	Other (See comment)					Waitng on rig to finish recurilating
7	07/15/2020 08:10	STEACS Briefing					Steacs breifing with BJ crew, rig crew and company man over job and hazards
8	07/15/2020 08:20	Prime Up	8.3300	3.00	5.00	500.00	Fill pumps and lines
9	07/15/2020 08:23	Pressure Test	8.3300	0.50	0.50	2000.00	Attempt pressure test shut down and swap out 1" value on floor
10	07/15/2020 08:30	Pressure Test	8.3300	0.50	0.50	5400.00	Pressure test iron and head to 5000 PSI
11	07/15/2020 08:34	Pump Spacer	12.0000	4.00	28.00	600.00	Pump 28 bbls of 12 PPG Spacer
12	07/15/2020 08:39	Pump Spacer	11.5000	4.00	28.00	600.00	Pump 26 bbls of 11.5 PPG Spacer
13	07/15/2020 08:45	Pump Spacer	11.0000	4.00	28.00	600.00	Pump 26 bbls of 11 PPG Spacer
14	07/15/2020 08:55	Pump Lead Cement	13.2000	6.00		540.00	Pump 301 bbls of 13.2 PPG lead cement (925 Sks, 1.82 Yield, 9.86 Gals/Sks)
15	07/15/2020 09:09	Pump Lead Cement	13.2000	6.00	80.00	400.00	80 bbls into lead cement
16	07/15/2020 09:21	Pump Lead Cement	13.2000	6.00	160.00	450.00	160 bbls into lead cement
17	07/15/2020 09:35	Pump Lead Cement	13.2000	6.00	240.00	500.00	240 bbls into lead cement

Client: Bayswater Exploration & Production, LLC

Well Name / API: EAST AULT 11-18-19HNC / 05-123-47070

Well MD: 17340

Quote #: QUO-46331-H0LOFO

Plan #: ORD-26500-T8M4Z6

Execution #: EXC-26500-T8M4Z602



SEQ	START DATE / TIME	EVENT	DENSITY (ppg)	PUMP RATE (bpm)	PUMP VOL (bbls)	PIPE PRESSURE (psi)	COMMENTS
18	07/15/2020 09:45	Pump Lead Cement	13.2000	6.00	301.00	500.00	Pump 301 bbls from Silo CTS-449 and swap to CTS-453 for Tail cement
19	07/15/2020 09:45	Pump Tail Cement	13.5000	6.00		560.00	Pump 461 bbls of tail cement (1755 Sks, 1.47 Yield, 7.45 Gals/Sks)
20	07/15/2020 09:59	Pump Tail Cement	13.5000	6.00	80.00	500.00	80 bbls into tail cement
21	07/15/2020 10:12	Pump Tail Cement	13.5000	6.00	160.00	600.00	160 bbls into tail cement
22	07/15/2020 10:20	Pump Tail Cement	13.5000	6.00	198.00	600.00	Pump total of 198 bbls from Silo CTS-453 and swap to tail silo 655
23	07/15/2020 10:20	Pump Tail Cement	13.5000	6.00	240.00	570.00	240 bbls into tail cement
24	07/15/2020 10:27	Pump Tail Cement	13.5000	6.00	320.00	550.00	320 bbls into tail cement
25	07/15/2020 10:39	Pump Tail Cement	13.5000	6.00	400.00	430.00	400 bbls into tail cement
26	07/15/2020 10:47	Pump Tail Cement	13.5000	6.00	461.00	600.00	Pump total cement of 461 bbls of tail cement and 262 bbls from silo 655
27	07/15/2020 11:10	End Pumping					Shut down pumping
28	07/15/2020 11:13	Wash Pumps and Lines	8.3300	4.00	15.00	45.00	Wash pumps and lines
29	07/15/2020 11:19	Drop Top Plug					Drop top plug with company man to verify goes downhole
30	07/15/2020 11:19	Pump Displacement	8.3300	10.00		950.00	Pump total of 379 bbls of fresh water displacement
31	07/15/2020 11:19	Pump Displacement	8.3300	10.00	100.00	2000.00	100 bbls into displacement
32	07/15/2020 11:29	Pump Displacement	8.3300	8.00	140.00	2300.00	140 bbls into displacement slow rate to 8 bpm
33	07/15/2020 11:34	Pump Displacement	8.3300	8.00	200.00	2700.00	200 bbls into displacement
34	07/15/2020 11:40	End Pumping	8.3300		222.00	1500.00	222 bbls into displacement shut down for rig to swap over to three way tanks spacer to surface
35	07/15/2020 11:46	Pump Displacement	8.3300	6.00	222.00	2700.00	Pump comes back online
36	07/15/2020 11:46	Pump Displacement	8.3300	6.00	300.00	2500.00	300 bbls into displacement
37	07/15/2020 12:00	Pump Displacement	8.3300	6.00	320.00	2700.00	320 bbls into displacement got cement to surface for total of 59 bbls of cement to surface

SEQ	START DATE / TIME	EVENT	DENSITY (ppg)	PUMP RATE (bpm)	PUMP VOL (bbls)	PIPE PRESSURE (psi)	COMMENTS
38	07/15/2020 12:04	Pump Displacement	8.3300	4.00	360.00	2600.00	360 bbls into displacement slow rate to 4 bpm for last 20
39	07/15/2020 12:10	Land Plug			379.00	3000.00	Bump plug to 3000 PSI, FCP of 2600 PSI total displacement of 379 bbls
40	07/15/2020 12:14	Check Floats					Hold for 3 mins and check floats, got 4 bbls back to pump floats holding
41	07/15/2020 12:18	STEACS Briefing					BJ crew has steacs over rigging down iron and hoses
42	07/15/2020 12:25	Rig Down					BJ crew rigs down iron and hoses
43	07/15/2020 13:30	Leave Location					BJ crew has journey mangement and departs from location

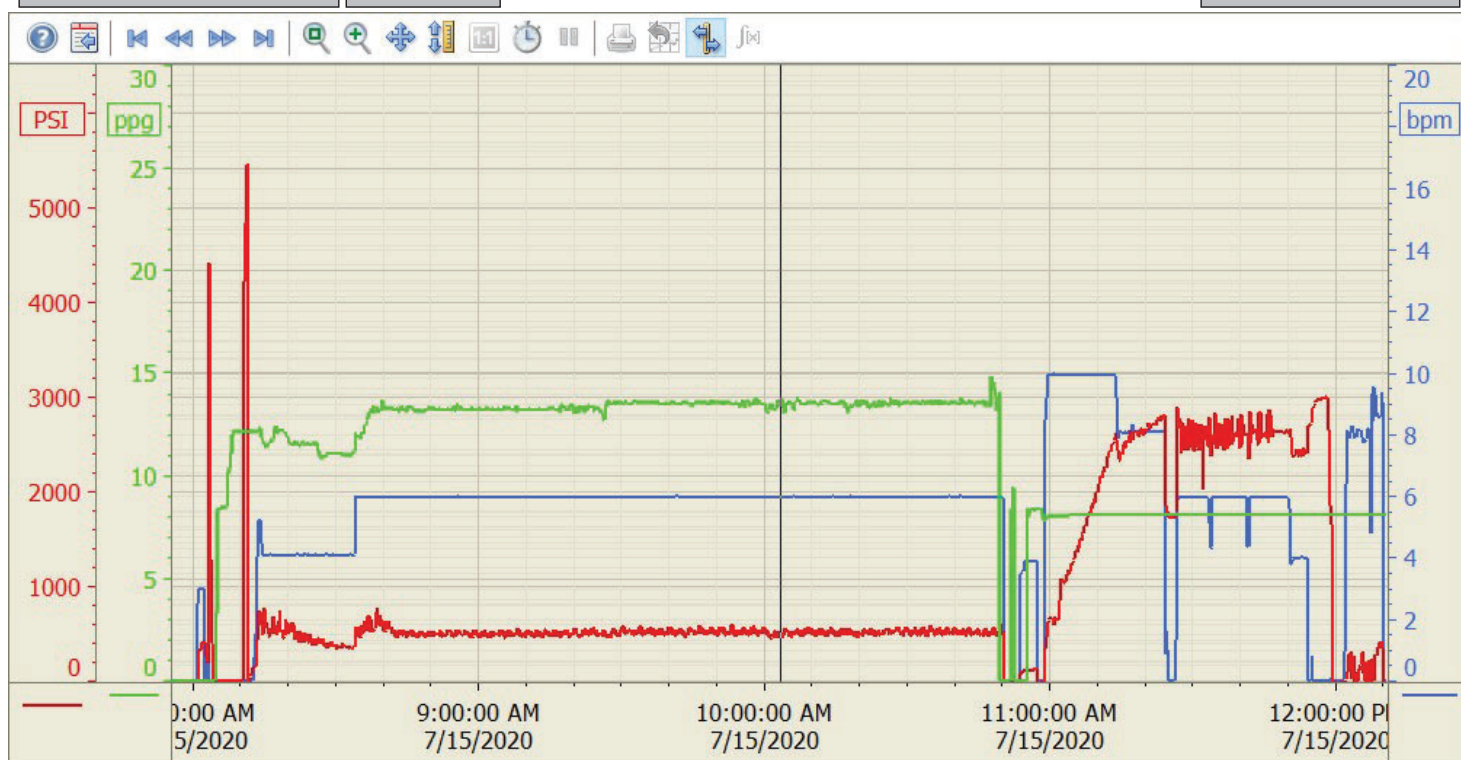
Summary Trend

Bayswater

East Ault 11-18



Lease: East Ault



7/15/2020 12:21:46 P