



Mr. Phillip Porter  
PDC Energy Inc.  
4000 Burlington Avenue  
Evans, Colorado 80620

September, 28 2020

**RE: Vegetation Assessment Report (Final Reclamation Completion Notice) COGCC  
Location Information: RENZELMAN-62S43W /33SWSE (Location I.D. 305017)  
Operator Location Information: Renzelman 34-33 Well (API # 05-125-09263)  
PDC Energy Inc. (Operator: 69175)**

Dear Mr. Porter:

Apex Companies, LLC (Apex) is presenting this letter to PDC Energy Inc. (PDC) documenting the results of a vegetation assessment that demonstrates successful completion of final reclamation efforts, per Colorado Oil & Gas Conservation Commission (COGCC) Rule 1004, on the above-referenced location. This conclusion is based on site visits, project correspondence, site documentation, and the completed vegetation assessment. Attached is a topographic location map and a vegetation survey site map with additional location information.

On July 16, 2020, modified step-point vegetation surveys were conducted on the reclaimed portion of the well pad, and on adjacent reference areas. Foliar and basal cover, along with non-vegetated and noxious weed occurrences, were documented; 100 survey points were recorded within the reclaimed disturbance and 100 survey points were recorded within the reference area. Vegetation survey points were identified using a bullseye target tool. The survey methodology employed by Apex is based on the *step-point method* described in an interagency technical reference published by the Bureau of Land Management (BLM, 1996).

Noxious weeds listed by the Colorado Department of Agriculture were excluded from the percent of reference vegetative coverage calculations, per COGCC Rule 1004.d. To ensure reclamation vegetative composition meets the standards of PDC and the COGCC, undesirable cover is also quantified in the attached Summary of Field Data. Undesirable cover includes species identified by the United States Department of Agriculture (USDA) Natural Resource Conservation Service (NRCS) as introduced and not native to the lower 48 states, and not considered beneficial for reclamation purposes.

Survey results indicate the reclaimed area has a foliar vegetative cover that is 100% of the reference area. Vegetation survey results are provided in the attached Summary of Field Data and Field Data Tables. Based on the results of the survey, final reclamation, as defined by COGCC rules and regulations, has been achieved. Photographs exhibiting current site conditions are also attached along with the site map illustrating the vegetation survey photo points and transect locations.

Apex appreciates the opportunity to provide environmental consulting services on this project. Should you have any questions or require additional information, please do not hesitate to contact me.

Sincerely,

**Apex Companies, LLC**



Carolyn Craveiro de Sá  
Environmental Scientist

720-537-5478

[Carolyn.CraveirodeSa@apexcos.com](mailto:Carolyn.CraveirodeSa@apexcos.com)

**Attachments:**

1. Vegetation Survey - Summary of Field Data
2. Topographic Location Map
3. Vegetation Survey Site Map
4. Vegetation Assessment Photo Log
5. Vegetation Survey (Field Data Tables)

**Reference:**

United States (U.S.) Department of Agriculture (USDA), Forest Service (USFS), Natural Resource Conservation Service (NRCS) and U.S. Department of the Interior (USDOI) Bureau of Land Management (BLM). "Sampling Vegetation Attributes, Interagency Technical Reference, 1996 (Revised in 1997, and 1999)". USDOI BLM Technical References #1734-4.

Date Accessed: August 2, 2017

## Vegetation Survey - Summary of Field Data

<b>Client</b>	PDC ENERGY INC
<b>Operator Location Information (API)</b>	Renzelman 34-33 (05-125-09263)
<b>Assessment Date</b>	7/16/2020
<b>Inspector Name</b>	Adam Roll

Based on the survey methodology, the foliar cover (%) in each survey area is calculated by summing the total number of foliar occurrences, excluding noxious weeds, and dividing by the total occurrences in the transects. For this location:

<b>Reclaim Area (Foliar Cover)</b>	<b>Reference Area (Foliar Cover)</b>
$(76 + 9 + 1) / 186 =$ <b>46.2%</b>	$(70 + 12 + 4) / 186 =$ <b>46.2%</b>

For the purposes of this assessment, the undesirable foliar cover (%) is calculated by summing the total number of undesirable\* foliar occurrences and dividing by the total occurrences in the transects, excluding noxious weeds. For this location:

<b>Reclaim Area (Undesirable Foliar Cover)</b>	<b>Reference Area (Undesirable Foliar Cover)</b>
$0 / (76 + 9 + 1) =$ <b>0.0%</b>	$0 / (70 + 12 + 4) =$ <b>0.0%</b>

The percent of reference used to evaluate the reclamation area for compliance with COGCC Rule 1003.e(2) is calculated by dividing the foliar cover (%) in the reclaim area by the foliar cover (%) in the reference area. For this location:

<b>Percent of Reference (Reclaim % / Reference %)</b>
$46.2\% / 46.2\% =$ <b>100.0%</b>

### Reclaim Area Vegetation

Desirable Foliar Cover	46.2%
Desirable Basal Cover	36.0%
Non Vegetated	17.8%
Noxious Weeds Cover	0.0%
Undesirable Cover	0.0%
<b>Quality Assurance Total</b> <i>(must equal 100)</i>	<b>100.0%</b>
Grass (Foliar)	76
Forb (Foliar)	9
Shrubs (Foliar)	1
Noxious Weed (Foliar)	0
Grass (Basal)	65
Forb (Basal)	2
Shrubs (Basal)	0
Noxious Weed (Basal)	0
Bare Ground	13
Litter	20
Rock	0
<b>Total Occurrences</b>	<b>186</b>

### Reference Area Vegetation

Desirable Foliar Cover	46.2%
Desirable Basal Cover	39.2%
Non Vegetated	14.6%
Noxious Weeds Cover	0.0%
Undesirable Cover	0.0%
<b>Quality Assurance Total</b> <i>(must equal 100)</i>	<b>100.0%</b>
Grass (Foliar)	70
Forb (Foliar)	12
Shrubs (Foliar)	4
Noxious Weed (Foliar)	0
Grass (Basal)	68
Forb (Basal)	5
Shrubs (Basal)	0
Noxious Weed (Basal)	0
Bare Ground	4
Litter	23
Rock	0
<b>Total Occurrences</b>	<b>186</b>

\*Identified as introduced and non-native to the lower 48 states by the USDA NRCS, and not considered beneficial for reclamation purposes.

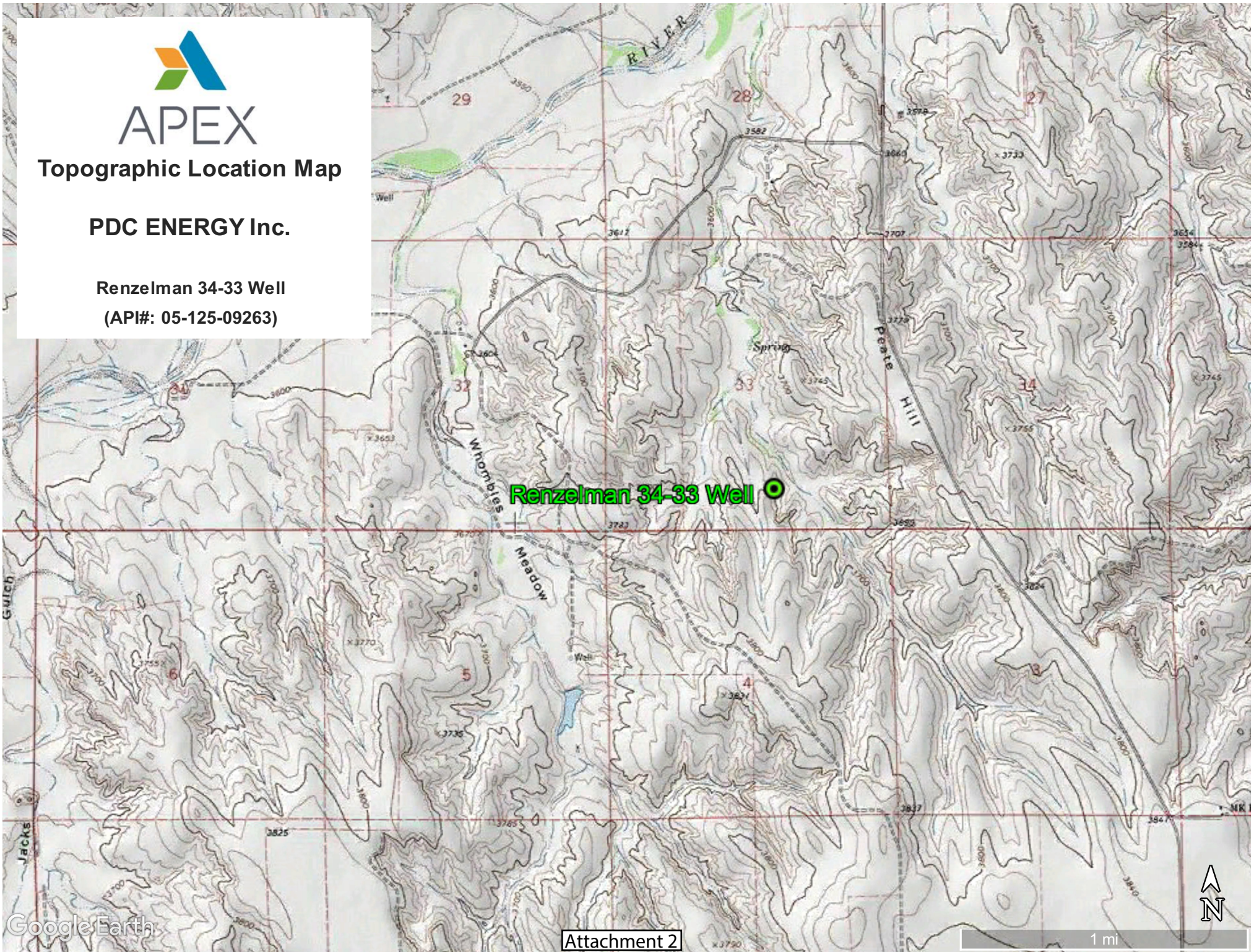


**APEX**

**Topographic Location Map**

**PDC ENERGY Inc.**

**Renzelman 34-33 Well  
(API#: 05-125-09263)**

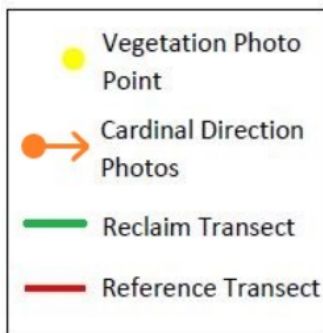




## Vegetation Survey Site Map

**PDC ENERGY Inc.**

**Renzelman 34-33 Well  
(API#: 05-125-09263)**



Legal Description: SWSE, Sec. 33, 2S43W

Lat/Long: 39.83506/-102.19167

County: Yuma

Land Use: Non-Cropland

Reference Area Foliar Cover: 46.2%

Reclaim Area Foliar Cover: 46.2%

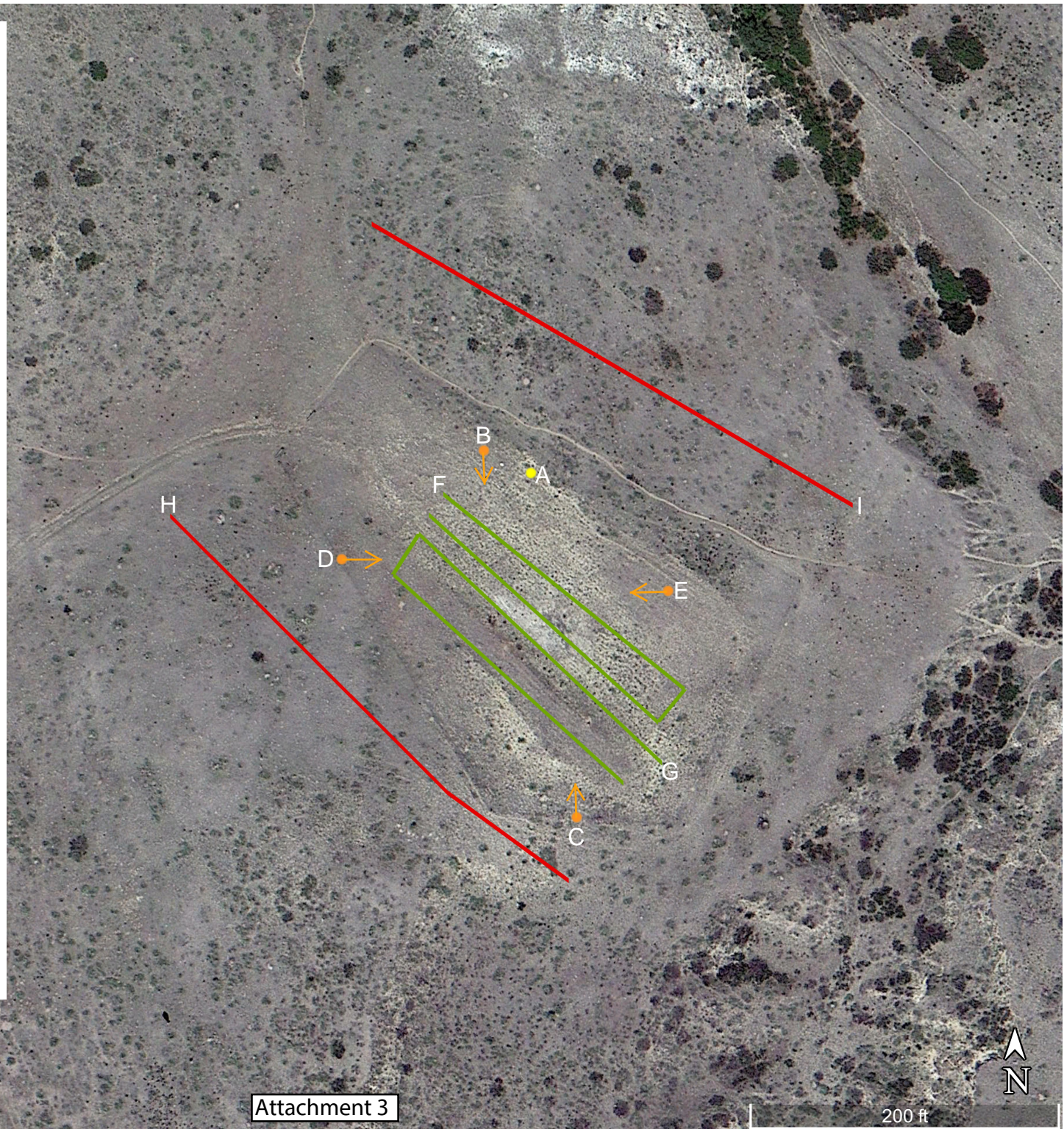
Cover Ratio (Reclaim/Reference): 100.0%

Inspector: A. Roll

Assessment Date: 07/16/2020

Aerial Imagery Date: 06/24/2013

*\*Please reference coordinate disclaimer on the photo log pages.*



# Vegetation Assessment Photo Log

Date Completed - 07/16/2020

Client - PDC Energy Inc.

Operator Location Information (API) - Renzelman 34-33 (05-125-09263)



Photo Point A: Edge of Disturbance - Facing Southeast

\*Geographic coordinates provided in the borders of all attached photos are based on points identified by the mobile phone or tablet which collected the photo. Coordinate accuracy in this format is typically no greater than 5 meters, while the points illustrated in the site diagram associated with this submittal were collected with a high accuracy GPS unit with sub-meter accuracy. Discrepancies between the site diagram and photo coordinates will exist.

# Vegetation Assessment Photo Log

Date Completed - 07/16/2020

Client - PDC Energy Inc.

Operator Location Information (API) - **Renzelman 34-33 (05-125-09263)**

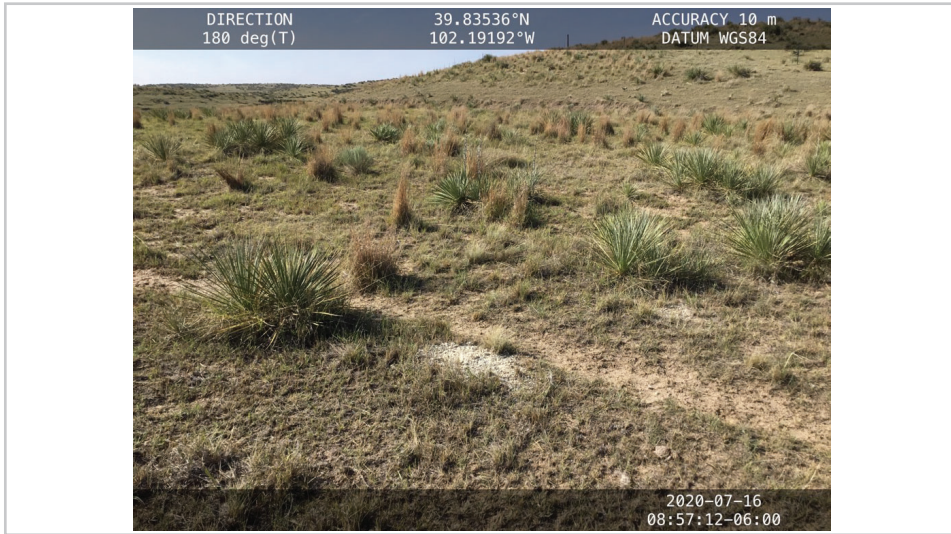


Photo Point B: North of Disturbance - Facing South



Photo Point C: South of Disturbance - Facing North

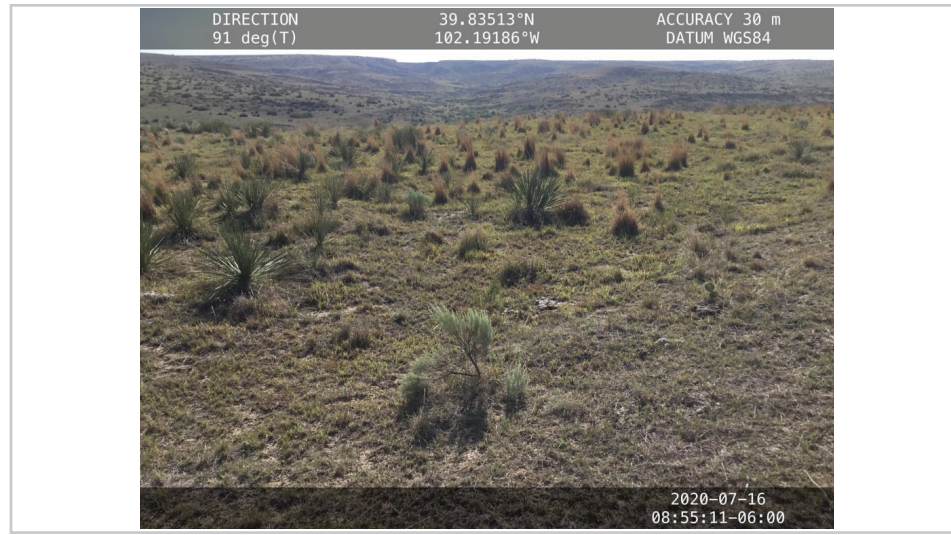


Photo Point D: West of Disturbance - Facing East



Photo Point E: East of Disturbance - Facing West

# Vegetation Assessment Photo Log

Date Completed - 07/16/2020

Client - PDC Energy Inc.

Operator Location Information (API) - **Renzelman 34-33 (05-125-09263)**



Photo Point A: Reclaim Area Vegetation - Facing South

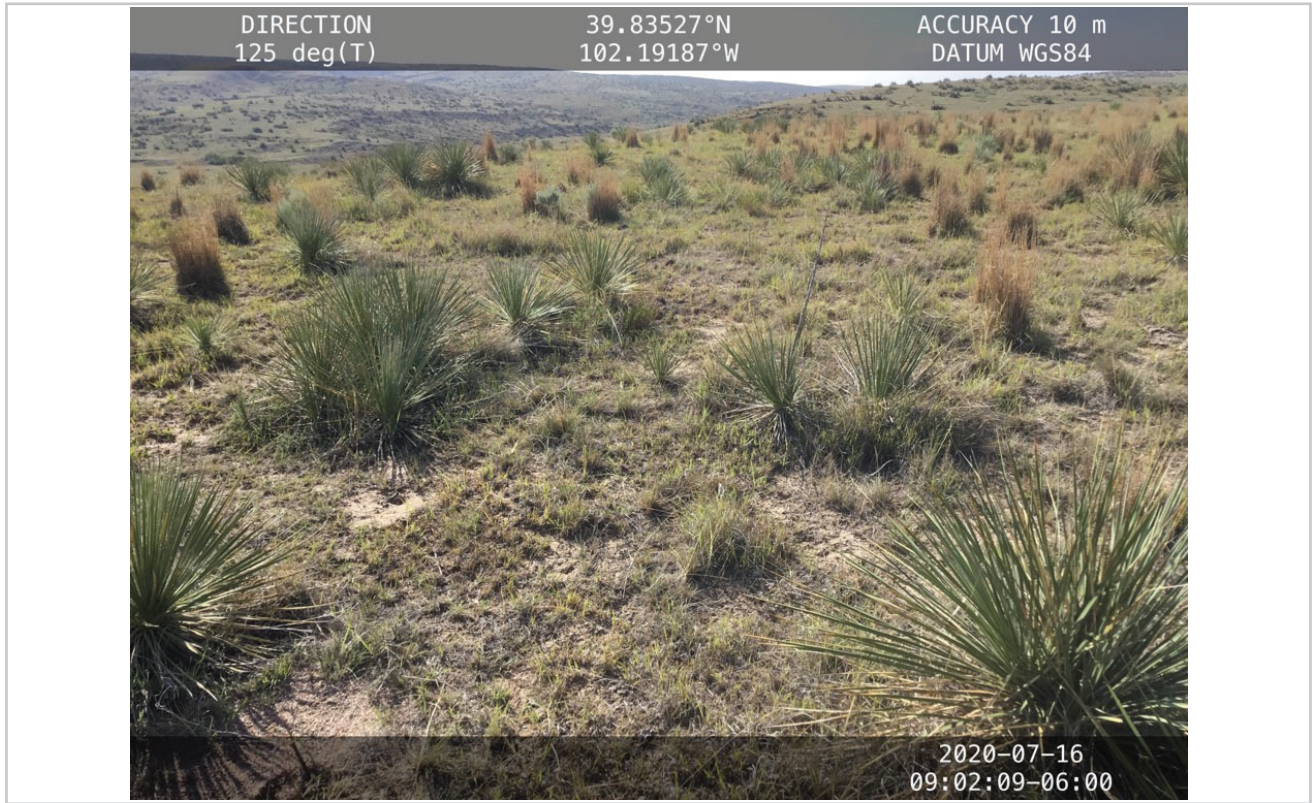


Photo Point F: Reclaim Transect 1 - Facing Southeast



Photo Point G: Reclaim Transect 2 - Facing Northwest

# Vegetation Assessment Photo Log

Date Completed - 07/16/2020

Client - PDC Energy Inc.

Operator Location Information (API) - Renzelman 34-33 (05-125-09263)



Photo Point A: Reference Area Vegetation - Facing East

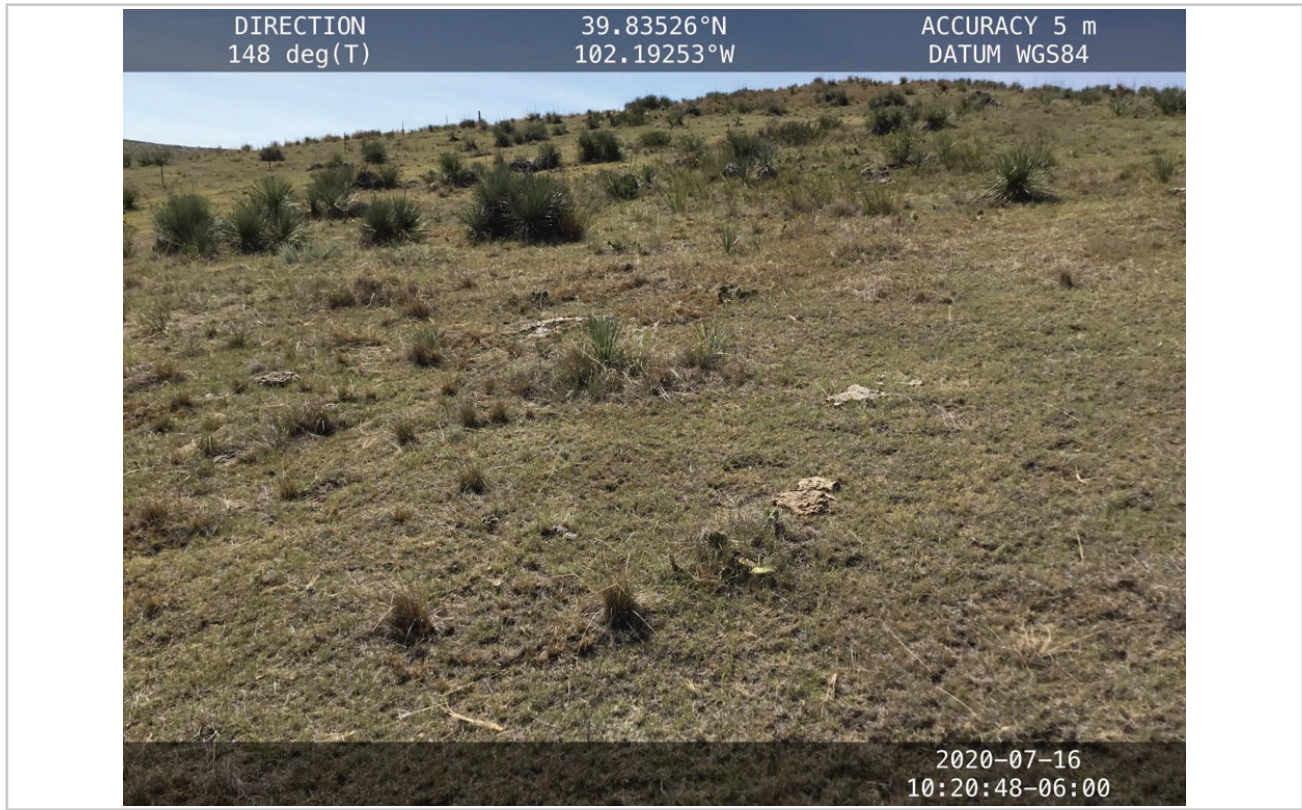


Photo Point H: Reference Transect 1 - Facing Southeast

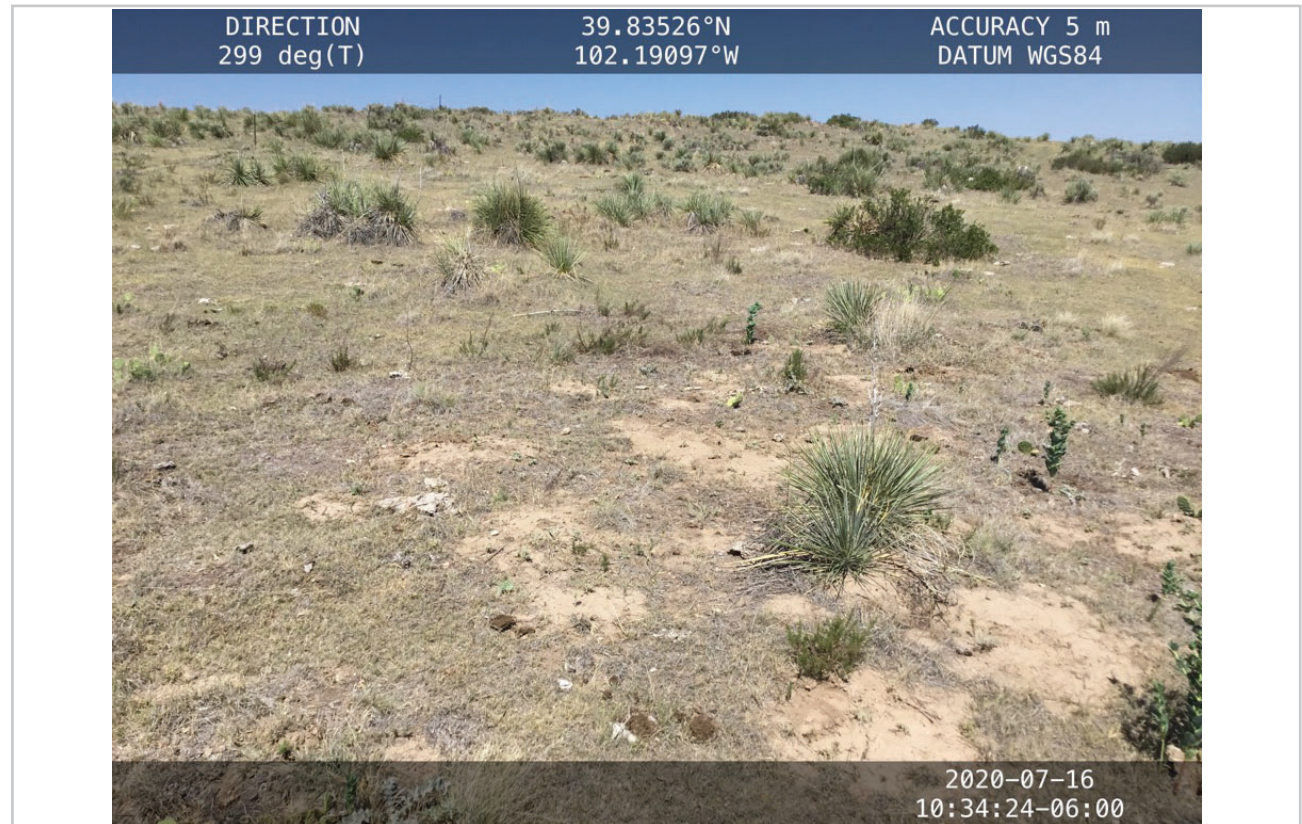


Photo Point I: Reference Transect 2 - Facing Northwest

# Vegetation Survey (Field Data Table)

**Client:** PDC ENERGY INC  
**Operator Location Information (API)** Renzelman 34-33 (05-125-09263)  
**Transect ID:** Reclaim Transect 1  
**Transect Length:** 425 ft.  
**Assessment Date:** 7/16/2020  
**Inspector:** Adam Roll

Point	Foliar	Species	Basal	Species
1	Forb	<i>Yucca spp.</i>	Grass	<i>Bouteloua curtipendula</i>
2	Grass	<i>Aristida Spp</i>	Grass	<i>Aristida Spp</i>
3			Non Vegetative	Bare Ground
4	Grass	<i>Schizachyrium scoparium</i>	Grass	<i>Bouteloua gracilis</i>
5	Forb	<i>Yucca spp.</i>	Grass	<i>Bouteloua curtipendula</i>
6	Grass	<i>Bouteloua curtipendula</i>	Grass	<i>Bouteloua curtipendula</i>
7	Grass	<i>Bouteloua curtipendula</i>	Grass	<i>Bouteloua curtipendula</i>
8	Grass	<i>Schizachyrium scoparium</i>	Grass	<i>Schizachyrium scoparium</i>
9	Grass	<i>Bouteloua curtipendula</i>	Non Vegetative	Bare Ground
10			Non Vegetative	Bare Ground
11	Grass	<i>Bouteloua curtipendula</i>	Grass	<i>Bouteloua curtipendula</i>
12	Forb	<i>Yucca spp.</i>	Non Vegetative	Litter
13	Grass	<i>Bouteloua curtipendula</i>	Non Vegetative	Litter
14	Grass	<i>Bouteloua curtipendula</i>	Grass	<i>Bouteloua curtipendula</i>
15	Grass	<i>Bouteloua curtipendula</i>	Grass	<i>Bouteloua curtipendula</i>
16	Grass	<i>Bouteloua curtipendula</i>	Grass	<i>Bouteloua curtipendula</i>
17			Non Vegetative	Bare Ground
18	Grass	<i>Bouteloua curtipendula</i>	Grass	<i>Bouteloua curtipendula</i>
19	Grass	<i>Hesperostipa comata</i>	Grass	<i>Hesperostipa comata</i>
20	Grass	<i>Bouteloua curtipendula</i>	Grass	<i>Bouteloua curtipendula</i>
21	Grass	<i>Bouteloua curtipendula</i>	Grass	<i>Bouteloua curtipendula</i>
22			Non Vegetative	Litter
23	Grass	<i>Bouteloua curtipendula</i>	Grass	<i>Bouteloua curtipendula</i>
24	Grass	<i>Aristida Spp</i>	Grass	<i>Aristida Spp</i>
25	Shrub	<i>Artemisia cana</i>	Grass	<i>Bouteloua curtipendula</i>
26	Grass	<i>Hesperostipa comata</i>	Grass	<i>Hesperostipa comata</i>
27	Grass	<i>Bouteloua curtipendula</i>	Grass	<i>Bouteloua curtipendula</i>
28			Non Vegetative	Litter
29	Grass	<i>Bouteloua curtipendula</i>	Grass	<i>Bouteloua curtipendula</i>
30	Grass	<i>Hesperostipa comata</i>	Grass	<i>Hesperostipa comata</i>
31	Grass	<i>Hesperostipa comata</i>	Non Vegetative	Bare Ground
32	Grass	<i>Bouteloua curtipendula</i>	Grass	<i>Bouteloua curtipendula</i>
33	Grass	<i>Bouteloua curtipendula</i>	Grass	<i>Bouteloua curtipendula</i>
34	Grass	<i>Bouteloua curtipendula</i>	Non Vegetative	Bare Ground
35	Grass	<i>Bouteloua curtipendula</i>	Grass	<i>Bouteloua curtipendula</i>
36	Grass	<i>Bouteloua gracilis</i>	Grass	<i>Bouteloua gracilis</i>
37	Grass	<i>Hesperostipa comata</i>	Grass	<i>Hesperostipa comata</i>
38			Non Vegetative	Bare Ground
39	Grass	<i>Bouteloua curtipendula</i>	Grass	<i>Bouteloua curtipendula</i>
40	Grass	<i>Schizachyrium scoparium</i>	Grass	<i>Schizachyrium scoparium</i>
41	Grass	<i>Bouteloua curtipendula</i>	Grass	<i>Bouteloua curtipendula</i>
42	Grass	<i>Schizachyrium scoparium</i>	Grass	<i>Schizachyrium scoparium</i>
43			Non Vegetative	Litter
44	Grass	<i>Bouteloua curtipendula</i>	Grass	<i>Bouteloua curtipendula</i>
45			Non Vegetative	Bare Ground
46	Grass	<i>Bouteloua curtipendula</i>	Grass	<i>Bouteloua curtipendula</i>
47	Grass	<i>Bouteloua curtipendula</i>	Grass	<i>Bouteloua curtipendula</i>
48	Grass	<i>Aristida Spp</i>	Grass	<i>Aristida Spp</i>
49	Grass	<i>Hesperostipa comata</i>	Grass	<i>Hesperostipa comata</i>
50			Non Vegetative	Litter



# Vegetation Survey (Field Data Table)

**Client:** PDC ENERGY INC  
**Operator Location Information (API)** Renzelman 34-33 (05-125-09263)  
**Transect ID:** Reclaim Transect 2  
**Transect Length:** 445 ft.  
**Assessment Date:** 7/16/2020  
**Inspector:** Adam Roll

Point	Foliar	Species	Basal	Species
1	Grass	<i>Bouteloua curtipendula</i>	Non Vegetative	Litter
2	Forb	<i>Yucca spp.</i>	Forb	<i>Yucca spp.</i>
3	Grass	<i>Schizachyrium scoparium</i>	Non Vegetative	Litter
4	Forb	<i>Psoralidium tenuiflorum</i>	Non Vegetative	Bare Ground
5	Grass	<i>Bouteloua curtipendula</i>	Non Vegetative	Litter
6	Grass	<i>Schizachyrium scoparium</i>	Grass	<i>Schizachyrium scoparium</i>
7	Grass	<i>Bouteloua curtipendula</i>	Grass	<i>Bouteloua curtipendula</i>
8	Grass	<i>Bouteloua curtipendula</i>	Grass	<i>Bouteloua curtipendula</i>
9	Grass	<i>Bouteloua gracilis</i>	Non Vegetative	Litter
10	Grass	<i>Bouteloua curtipendula</i>	Grass	<i>Bouteloua curtipendula</i>
11	Grass	<i>Bouteloua curtipendula</i>	Grass	<i>Bouteloua curtipendula</i>
12	Grass	<i>Bouteloua gracilis</i>	Non Vegetative	Litter
13			Non Vegetative	Bare Ground
14	Grass	<i>Bouteloua gracilis</i>	Grass	<i>Bouteloua gracilis</i>
15	Grass	<i>Bouteloua curtipendula</i>	Grass	<i>Bouteloua curtipendula</i>
16	Grass	<i>Bouteloua curtipendula</i>	Non Vegetative	Litter
17	Grass	<i>Bouteloua gracilis</i>	Grass	<i>Bouteloua gracilis</i>
18	Grass	<i>Bouteloua curtipendula</i>	Grass	<i>Bouteloua curtipendula</i>
19	Grass	<i>Bouteloua curtipendula</i>	Grass	<i>Bouteloua curtipendula</i>
20	Grass	<i>Bouteloua curtipendula</i>	Non Vegetative	Litter
21	Forb	<i>Yucca spp.</i>	Forb	<i>Yucca spp.</i>
22	Grass	<i>Hesperostipa comata</i>	Grass	<i>Hesperostipa comata</i>
23	Grass	<i>Bouteloua curtipendula</i>	Non Vegetative	Bare Ground
24	Grass	<i>Bouteloua curtipendula</i>	Grass	<i>Bouteloua curtipendula</i>
25	Forb	<i>Yucca spp.</i>	Grass	<i>Aristida Spp</i>
26	Grass	<i>Hesperostipa comata</i>	Grass	<i>Hesperostipa comata</i>
27	Grass	<i>Bouteloua curtipendula</i>	Grass	<i>Bouteloua curtipendula</i>
28	Grass	<i>Bouteloua gracilis</i>	Non Vegetative	Litter
29	Grass	<i>Hesperostipa comata</i>	Grass	<i>Hesperostipa comata</i>
30			Non Vegetative	Litter
31	Grass	<i>Hesperostipa comata</i>	Grass	<i>Hesperostipa comata</i>
32	Grass	<i>Bouteloua curtipendula</i>	Grass	<i>Bouteloua curtipendula</i>
33	Grass	<i>Bouteloua gracilis</i>	Grass	<i>Bouteloua gracilis</i>
34	Grass	<i>Bouteloua curtipendula</i>	Grass	<i>Bouteloua curtipendula</i>
35	Grass	<i>Bouteloua curtipendula</i>	Non Vegetative	Litter
36	Grass	<i>Bouteloua curtipendula</i>	Grass	<i>Bouteloua curtipendula</i>
37			Non Vegetative	Litter
38			Non Vegetative	Litter
39	Grass	<i>Aristida Spp</i>	Non Vegetative	Bare Ground
40	Grass	<i>Bouteloua curtipendula</i>	Grass	<i>Bouteloua curtipendula</i>
41	Grass	<i>Bouteloua curtipendula</i>	Grass	<i>Bouteloua curtipendula</i>
42	Grass	<i>Hesperostipa comata</i>	Grass	<i>Hesperostipa comata</i>
43	Grass	<i>Hesperostipa comata</i>	Grass	<i>Hesperostipa comata</i>
44	Grass	<i>Bouteloua curtipendula</i>	Grass	<i>Bouteloua curtipendula</i>
45	Forb	<i>Yucca spp.</i>	Grass	<i>Hesperostipa comata</i>
46	Forb	<i>Opuntia spp</i>	Grass	<i>Bouteloua gracilis</i>
47	Grass	<i>Aristida Spp</i>	Non Vegetative	Litter
48	Grass	<i>Hesperostipa comata</i>	Grass	<i>Hesperostipa comata</i>
49	Grass	<i>Bouteloua curtipendula</i>	Non Vegetative	Litter
50			Non Vegetative	Bare Ground

# Vegetation Survey (Field Data Table)

**Client:** PDC ENERGY INC  
**Operator Location Information (API)** Renzelman 34-33 (05-125-09263)  
**Transect ID:** Reference Transect 1  
**Transect Length:** 355 ft.  
**Assessment Date:** 7/16/2020  
**Inspector:** Adam Roll

Point	Foliar	Species	Basal	Species
1	Grass	<i>Bouteloua gracilis</i>	Grass	<i>Bouteloua gracilis</i>
2	Grass	<i>Bouteloua gracilis</i>	Grass	<i>Bouteloua gracilis</i>
3	Grass	<i>Bouteloua gracilis</i>	Grass	<i>Bouteloua gracilis</i>
4	Grass	<i>Aristida Spp</i>	Grass	<i>Aristida Spp</i>
5	Grass	<i>Bouteloua curtipendula</i>	Grass	<i>Bouteloua curtipendula</i>
6	Grass	<i>Bouteloua gracilis</i>	Grass	<i>Bouteloua gracilis</i>
7	Grass	<i>Bouteloua curtipendula</i>	Non Vegetative	Litter
8	Forb	<i>Yucca spp.</i>	Forb	<i>Yucca spp.</i>
9	Forb	<i>Yucca spp.</i>	Grass	<i>Bouteloua gracilis</i>
10	Grass	<i>Bouteloua gracilis</i>	Grass	<i>Bouteloua gracilis</i>
11			Non Vegetative	Bare Ground
12	Grass	<i>Schizachyrium scoparium</i>	Non Vegetative	Litter
13			Non Vegetative	Bare Ground
14	Forb	<i>Yucca spp.</i>	Grass	<i>Bouteloua curtipendula</i>
15	Grass	<i>Bouteloua gracilis</i>	Grass	<i>Bouteloua gracilis</i>
16	Grass	<i>Bouteloua curtipendula</i>	Grass	<i>Bouteloua curtipendula</i>
17	Grass	<i>Schizachyrium scoparium</i>	Grass	<i>Schizachyrium scoparium</i>
18	Grass	<i>Bouteloua curtipendula</i>	Grass	<i>Bouteloua curtipendula</i>
19			Non Vegetative	Bare Ground
20	Grass	<i>Bouteloua gracilis</i>	Grass	<i>Bouteloua gracilis</i>
21	Grass	<i>Bouteloua gracilis</i>	Non Vegetative	Litter
22	Grass	<i>Bouteloua gracilis</i>	Non Vegetative	Litter
23	Grass	<i>Bouteloua gracilis</i>	Grass	<i>Bouteloua gracilis</i>
24	Grass	<i>Bouteloua gracilis</i>	Grass	<i>Bouteloua gracilis</i>
25	Grass	<i>Bouteloua gracilis</i>	Non Vegetative	Litter
26	Grass	<i>Bouteloua gracilis</i>	Grass	<i>Bouteloua gracilis</i>
27	Grass	<i>Bouteloua gracilis</i>	Grass	<i>Bouteloua gracilis</i>
28	Grass	<i>Bouteloua gracilis</i>	Grass	<i>Bouteloua gracilis</i>
29	Grass	<i>Bouteloua gracilis</i>	Grass	<i>Bouteloua gracilis</i>
30	Grass	<i>Bouteloua gracilis</i>	Grass	<i>Bouteloua gracilis</i>
31	Grass	<i>Bouteloua gracilis</i>	Grass	<i>Bouteloua gracilis</i>
32	Grass	<i>Bouteloua gracilis</i>	Grass	<i>Bouteloua gracilis</i>
33	Grass	<i>Bouteloua gracilis</i>	Grass	<i>Bouteloua gracilis</i>
34	Forb	<i>Yucca spp.</i>	Forb	<i>Yucca spp.</i>
35	Grass	<i>Bouteloua gracilis</i>	Grass	<i>Bouteloua gracilis</i>
36	Grass	<i>Bouteloua gracilis</i>	Grass	<i>Bouteloua gracilis</i>
37	Grass	<i>Hesperostipa comata</i>	Grass	<i>Bouteloua gracilis</i>
38	Grass	<i>Bouteloua gracilis</i>	Grass	<i>Bouteloua gracilis</i>
39	Grass	<i>Bouteloua gracilis</i>	Grass	<i>Bouteloua gracilis</i>
40	Grass	<i>Hesperostipa comata</i>	Non Vegetative	Litter
41	Grass	<i>Bouteloua gracilis</i>	Grass	<i>Bouteloua gracilis</i>
42	Grass	<i>Aristida Spp</i>	Grass	<i>Aristida Spp</i>
43	Grass	<i>Bouteloua gracilis</i>	Grass	<i>Bouteloua gracilis</i>
44	Forb	<i>Opuntia spp</i>	Forb	<i>Opuntia spp</i>
45	Grass	<i>Aristida Spp</i>	Grass	<i>Aristida Spp</i>
46	Grass	<i>Bouteloua gracilis</i>	Grass	<i>Bouteloua gracilis</i>
47	Grass	<i>Bouteloua gracilis</i>	Grass	<i>Bouteloua gracilis</i>
48	Grass	<i>Bouteloua gracilis</i>	Non Vegetative	Litter
49			Non Vegetative	Litter
50	Grass	<i>Hesperostipa comata</i>	Grass	<i>Hesperostipa comata</i>

# Vegetation Survey (Field Data Table)

**Client:** PDC ENERGY INC  
**Operator Location Information (API)** Renzelman 34-33 (05-125-09263)  
**Transect ID:** Reference Transect 2  
**Transect Length:** 360 ft.  
**Assessment Date:** 7/16/2020  
**Inspector:** Adam Roll

Point	Foliar	Species	Basal	Species
1			Non Vegetative	Bare Ground
2	Grass	<i>Bouteloua gracilis</i>	Non Vegetative	Litter
3			Non Vegetative	Litter
4	Grass	<i>Bouteloua gracilis</i>	Grass	<i>Bouteloua gracilis</i>
5	Grass	<i>Bouteloua gracilis</i>	Grass	<i>Bouteloua gracilis</i>
6	Grass	<i>Bouteloua gracilis</i>	Grass	<i>Bouteloua gracilis</i>
7	Forb	<i>Yucca spp.</i>	Grass	<i>Bouteloua gracilis</i>
8	Grass	<i>Hesperostipa comata</i>	Forb	<i>Opuntia spp</i>
9	Grass	<i>Bouteloua gracilis</i>	Grass	<i>Bouteloua gracilis</i>
10	Grass	<i>Bouteloua gracilis</i>	Grass	<i>Bouteloua gracilis</i>
11	Grass	<i>Bouteloua gracilis</i>	Grass	<i>Bouteloua gracilis</i>
12	Grass	<i>Bouteloua gracilis</i>	Grass	<i>Bouteloua gracilis</i>
13	Forb	<i>Yucca spp.</i>	Grass	<i>Bouteloua gracilis</i>
14			Non Vegetative	Litter
15	Grass	<i>Bouteloua gracilis</i>	Grass	<i>Bouteloua gracilis</i>
16	Forb	<i>Hedgehog cactus</i>	Forb	<i>Hedgehog cactus</i>
17	Grass	<i>Bouteloua gracilis</i>	Grass	<i>Bouteloua gracilis</i>
18	Grass	<i>Bouteloua gracilis</i>	Grass	<i>Bouteloua gracilis</i>
19	Forb	<i>Yucca spp.</i>	Grass	<i>Bouteloua gracilis</i>
20			Non Vegetative	Litter
21			Non Vegetative	Litter
22	Grass	<i>Bouteloua gracilis</i>	Grass	<i>Bouteloua gracilis</i>
23	Grass	<i>Bouteloua gracilis</i>	Grass	<i>Bouteloua gracilis</i>
24	Shrub	<i>Artemisia cana</i>	Grass	<i>Bouteloua gracilis</i>
25	Grass	<i>Bouteloua curtipendula</i>	Grass	<i>Bouteloua curtipendula</i>
26	Grass	<i>Bouteloua gracilis</i>	Grass	<i>Bouteloua gracilis</i>
27	Grass	<i>Bouteloua gracilis</i>	Grass	<i>Bouteloua gracilis</i>
28	Grass	<i>Aristida Spp</i>	Grass	<i>Aristida Spp</i>
29	Shrub	<i>Artemisia cana</i>	Non Vegetative	Litter
30	Grass	<i>Hesperostipa comata</i>	Non Vegetative	Litter
31	Grass	<i>Bouteloua gracilis</i>	Grass	<i>Bouteloua gracilis</i>
32	Grass	<i>Bouteloua gracilis</i>	Non Vegetative	Litter
33	Forb	<i>Opuntia spp</i>	Non Vegetative	Litter
34	Grass	<i>Bouteloua gracilis</i>	Grass	<i>Bouteloua gracilis</i>
35	Grass	<i>Bouteloua gracilis</i>	Grass	<i>Bouteloua gracilis</i>
36	Grass	<i>Bouteloua gracilis</i>	Grass	<i>Bouteloua gracilis</i>
37	Grass	<i>Bouteloua gracilis</i>	Non Vegetative	Litter
38	Shrub	<i>Artemisia cana</i>	Grass	<i>Hesperostipa comata</i>
39	Shrub	<i>Artemisia cana</i>	Grass	<i>Bouteloua gracilis</i>
40	Grass	<i>Bouteloua gracilis</i>	Grass	<i>Bouteloua gracilis</i>
41			Non Vegetative	Litter
42	Forb	<i>Yucca spp.</i>	Grass	<i>Bouteloua gracilis</i>
43			Non Vegetative	Litter
44	Grass	<i>Bouteloua curtipendula</i>	Grass	<i>Bouteloua curtipendula</i>
45			Non Vegetative	Litter
46			Non Vegetative	Litter
47			Non Vegetative	Litter
48	Grass	<i>Bouteloua gracilis</i>	Grass	<i>Bouteloua gracilis</i>
49	Grass	<i>Bouteloua gracilis</i>	Grass	<i>Bouteloua gracilis</i>
50	Forb	<i>Yucca spp.</i>	Grass	<i>Hesperostipa comata</i>