



CASING INSPECTION LOG
(40F) MIT
CCL/GR

Company	SNOW CONSULTING				
Well	GOVT-BAKER #1A				
Field	DEBEQUE				
County	MESA	State		COLORADO	
Location:	API # : 05-077-05145				Other Services
SEC 21 TWP 8S RGE 9TW					Elevation K.B. D.F. G.L.
Permanent Datum	GL				
Log Measured From	GL	Elevation Ft Above PD 0			
Drilling Measured From	KB				
Date	07-02-2019				
Run Number	ONE				
Depth Driller	N/A				
Present Depth Driller	N/A				
Depth Logger	194'				
Bottom Logged Interval	194'				
Top Log Interval	SURFACE				
Fluid Level	SURFACE				
Type Fluid	WATER				
Max. Recorded Temp.	N/A				
Estimated Cement Top	N/A				
Equipment Number	208				
Location	GRAND JUNCTION				
Recorded By	C. BURNS				
Witnessed By	RALPH SNOW				
Borehole Record					
Run Number	Bit	From	To	Size	Casing Record
					Weight
					From
					To

<<< Fold Here >>>

All interpretations are opinions based on inferences from electrical or other measurements and we cannot and do not guarantee the accuracy or correctness of any interpretation, and we shall not, except in the case of gross or willful negligence on our part, be liable or responsible for any loss, costs, damages, or expenses incurred or sustained by anyone resulting from any interpretation made by any of our officers, agents or employees. These interpretations are also subject to our general terms and conditions set out in our current Price Schedule.

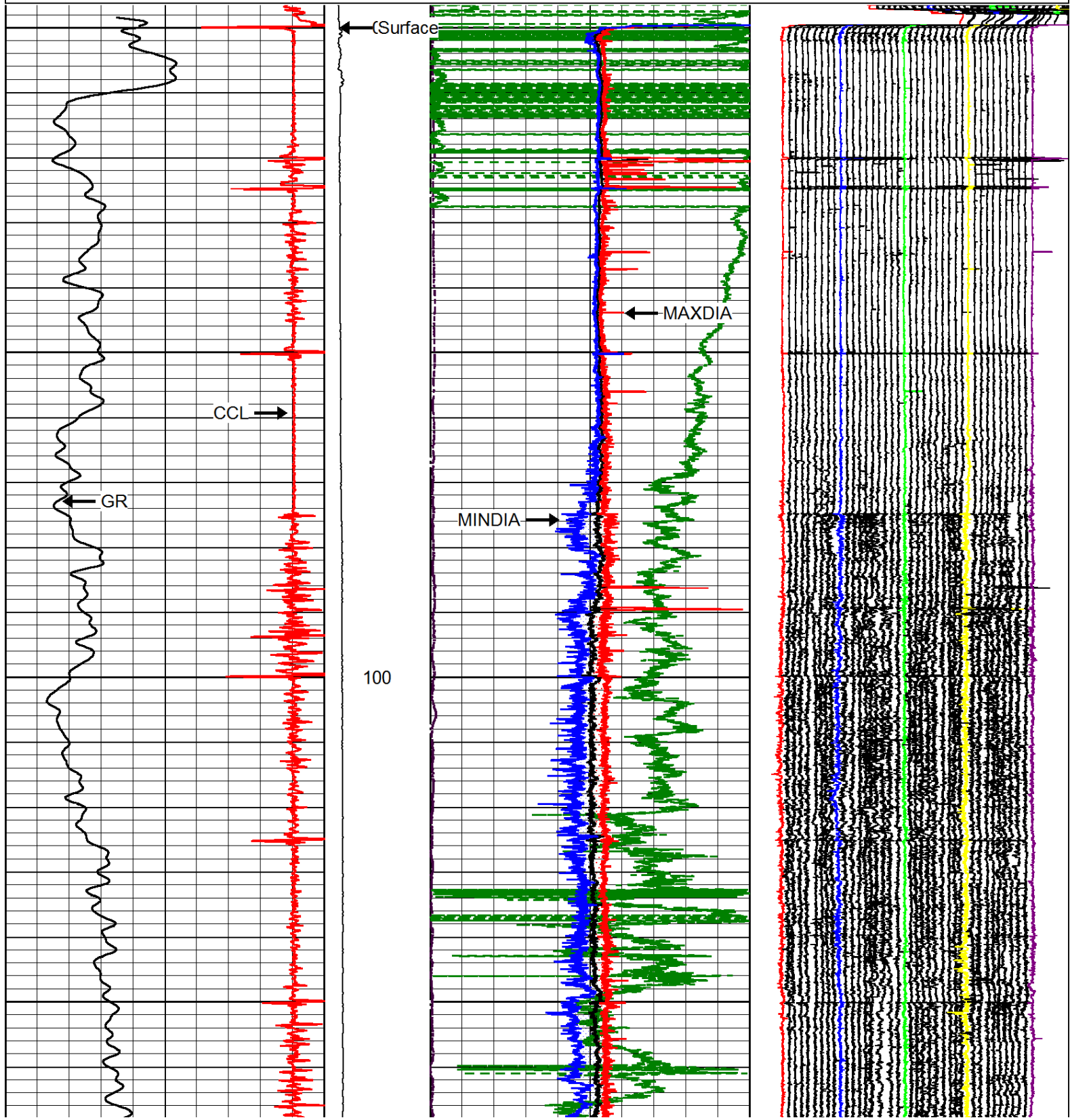
WARRIOR 7.0 SOFTWARE - Comments

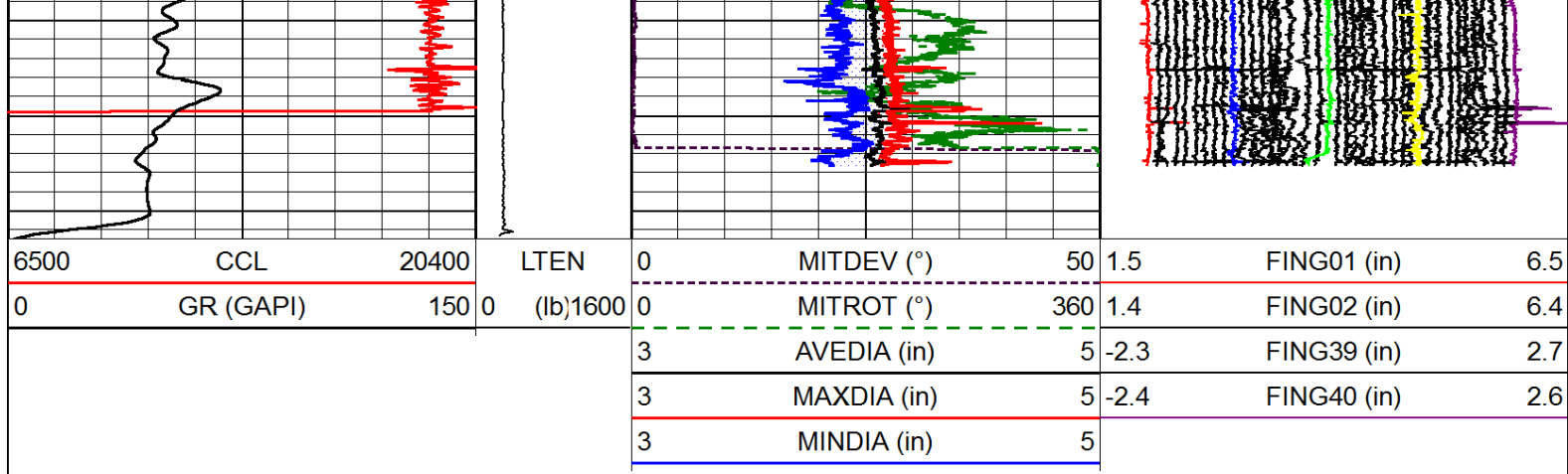


MAIN PASS

Database File: 07_02_snowconsulting_govt-baker#1.db
Dataset Pathname: MAIN/pass1
Presentation Format: rm_40_45d
Dataset Creation: Tue Jul 02 15:43:29 2019 by Log SCH 120430
Charted by: Depth in Feet scaled 1:240

6500	CCL	20400	LTEN	0	MITDEV (°)	50	1.5	FING01 (in)	6.5
0	GR (GAPI)	150	0 (lb)1600	0	MITROT (°)	360	1.4	FING02 (in)	6.4
				3	AVEDIA (in)	5	-2.3	FING39 (in)	2.7
				3	MAXDIA (in)	5	-2.4	FING40 (in)	2.6
				3	MINDIA (in)	5			

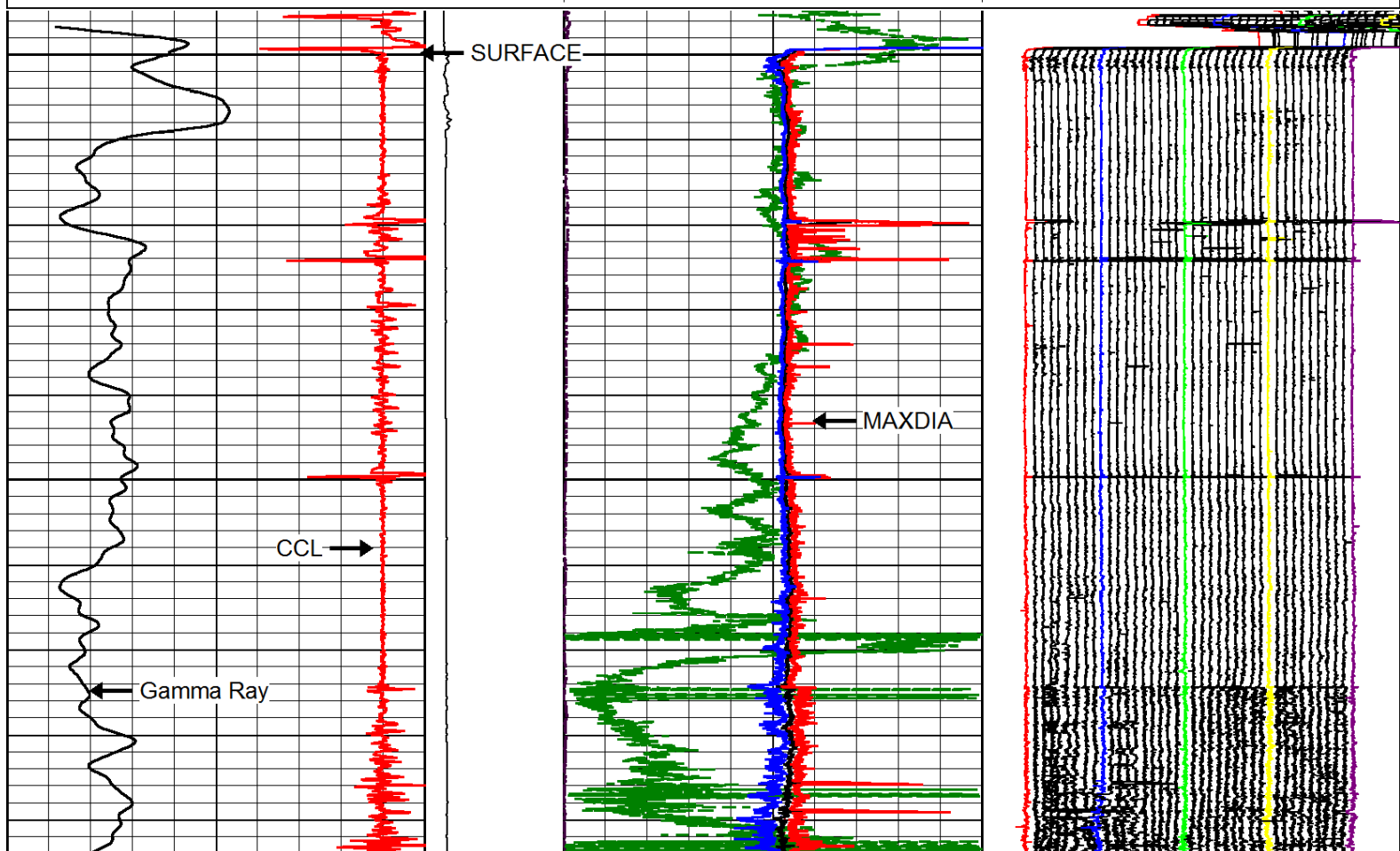


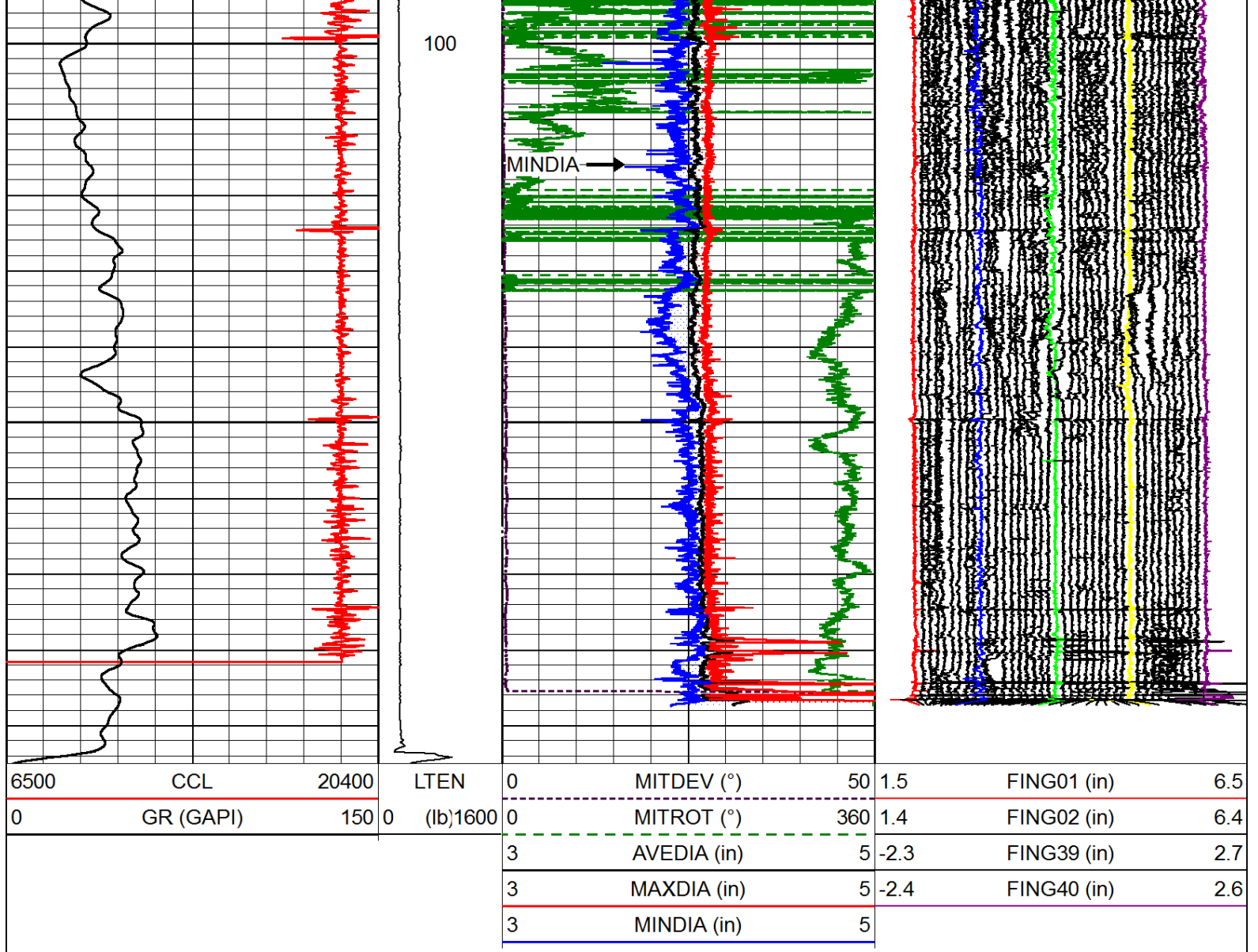


REPEAT PASS

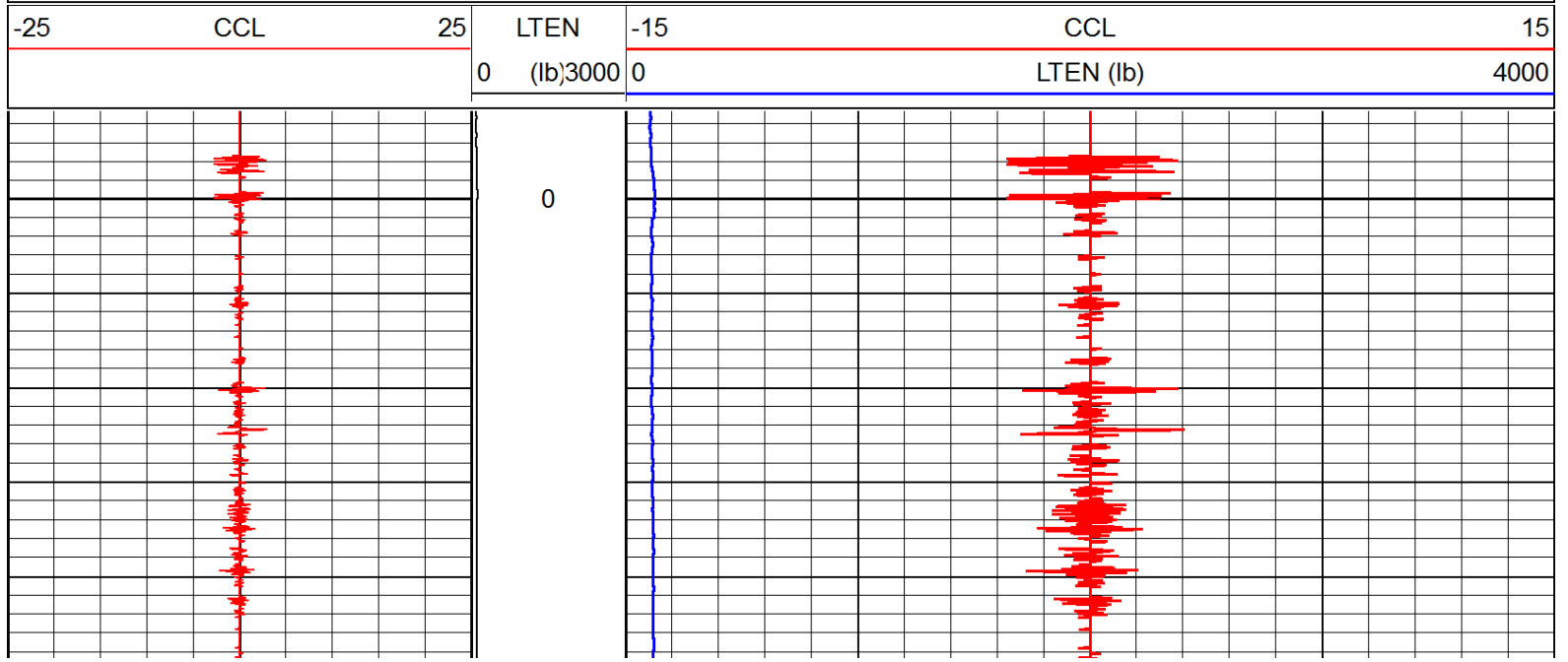
Database File: 07_02_snowconsulting_govt-baker#1.db
 Dataset Pathname: REPEAT/pass2
 Presentation Format: rm_40_45d
 Dataset Creation: Tue Jul 02 15:54:09 2019 by Log SCH 120430
 Charted by: Depth in Feet scaled 1:240

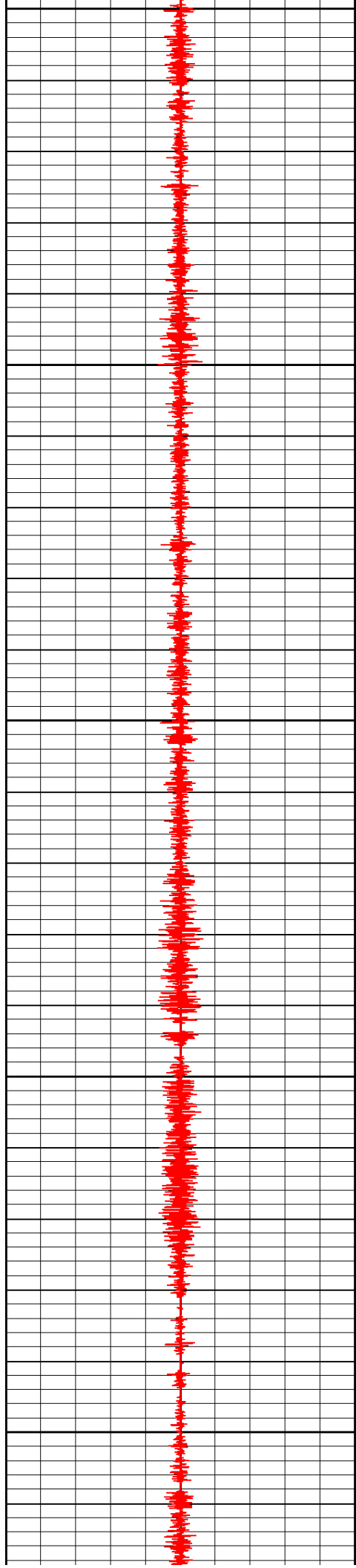
6500	CCL	20400	LTEN 0 (lb)1600	0	MITDEV (°)	50	1.5	FING01 (in)	6.5
0	GR (GAPI)	150		0	MITROT (°)	360	1.4	FING02 (in)	6.4
				3	AVEDIA (in)	5	-2.3	FING39 (in)	2.7
				3	MAXDIA (in)	5	-2.4	FING40 (in)	2.6
				3	MINDIA (in)	5			





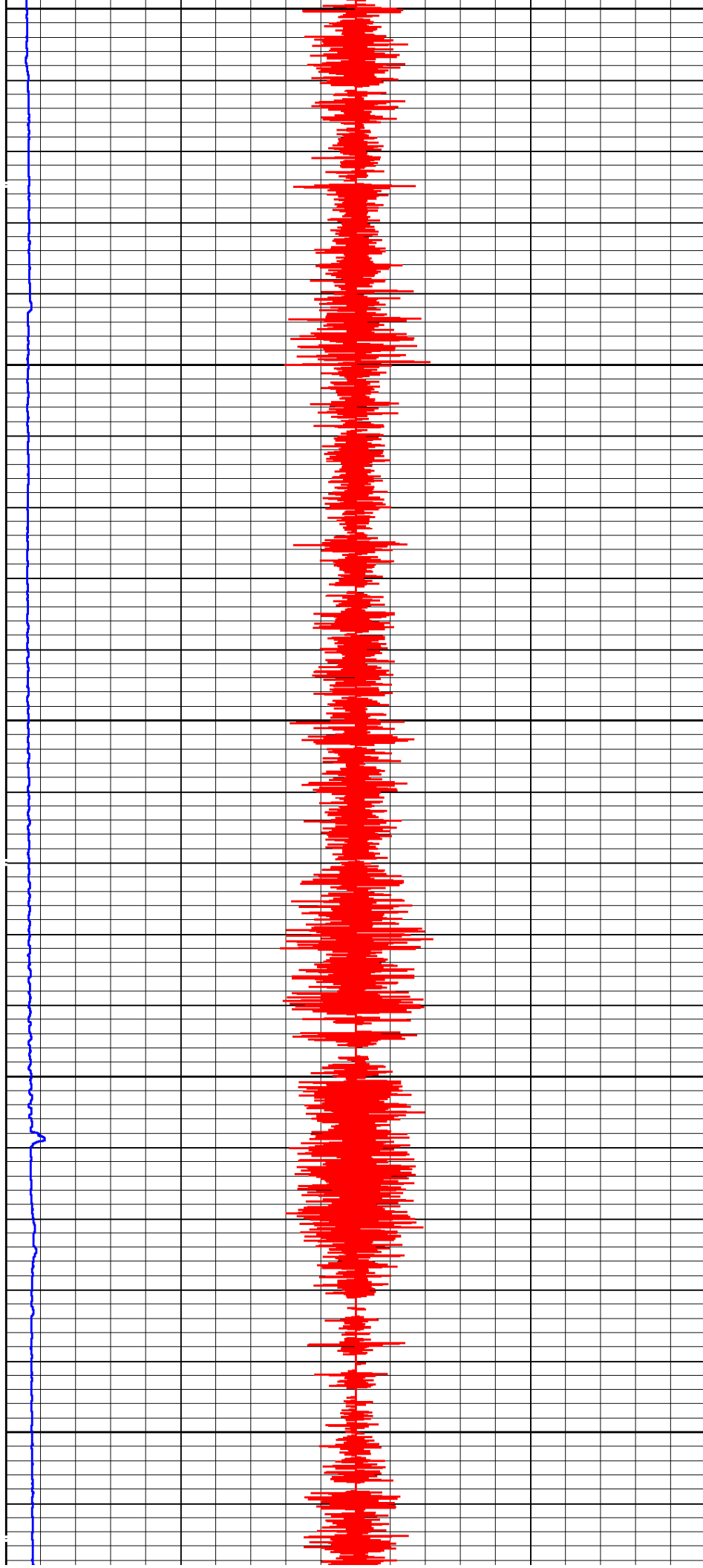
Database File: 07_02_snowconsulting_govt-baker#1.db
 Dataset Pathname: CCL/pass2.2
 Presentation Format: ccl
 Dataset Creation: Tue Jul 02 16:27:58 2019 by Calc SCH 120430
 Charted by: Depth in Feet scaled 1:240

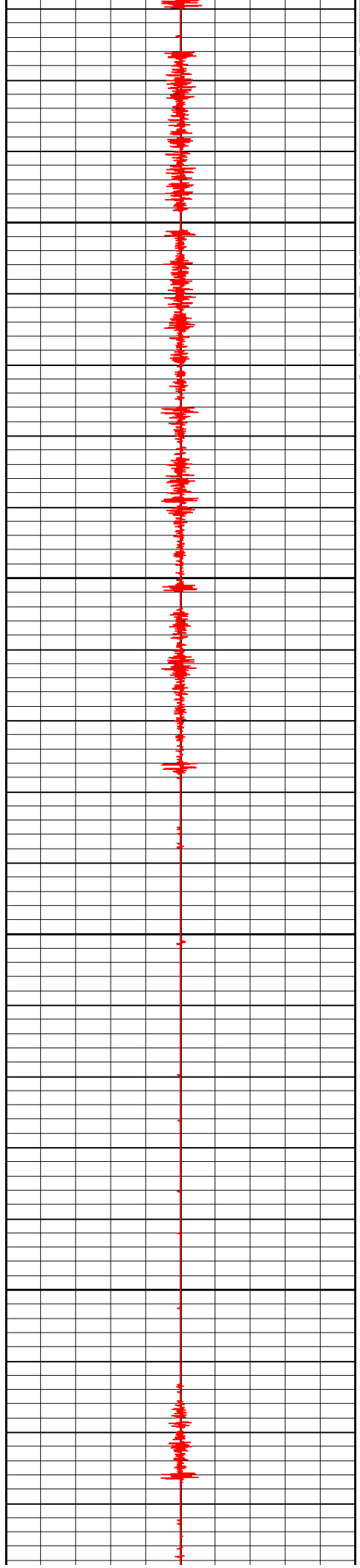




100

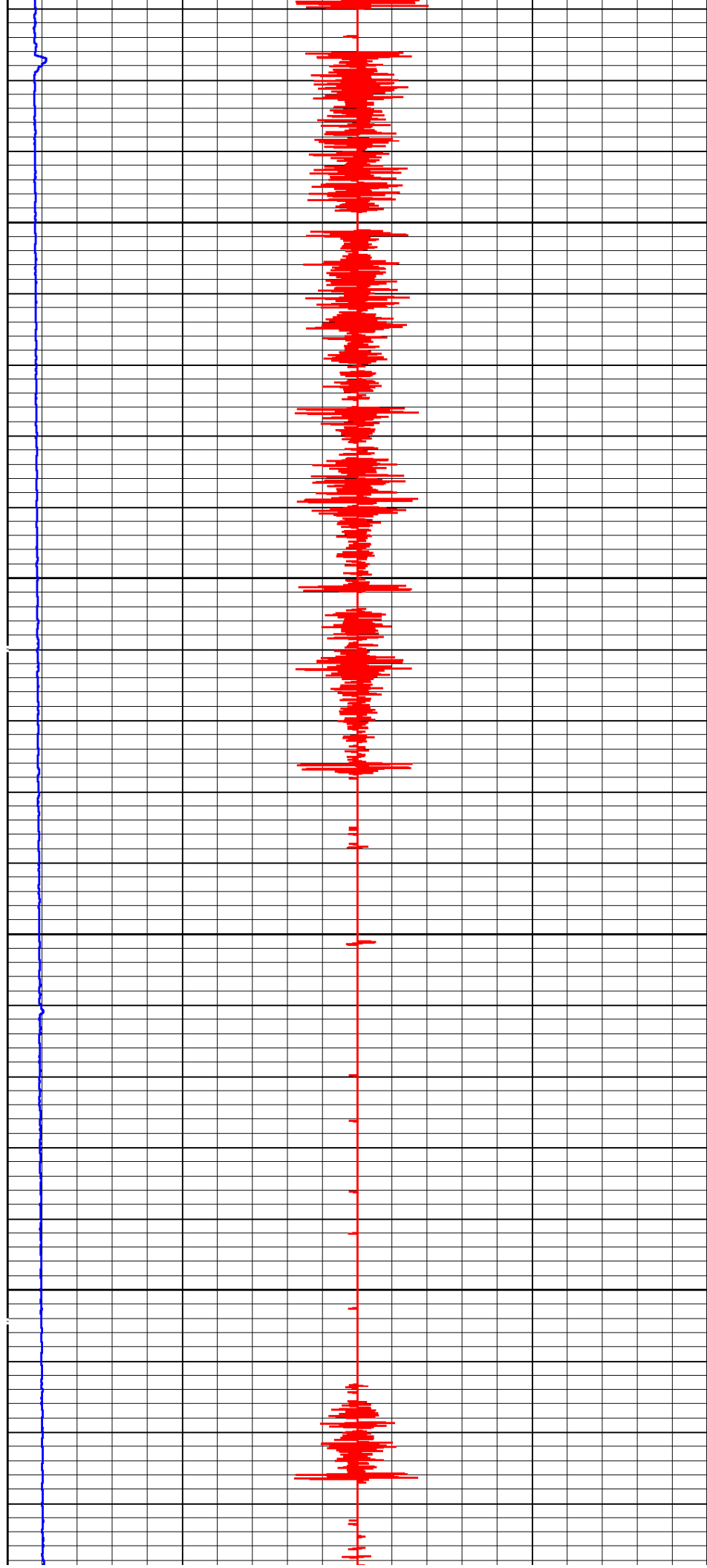
200

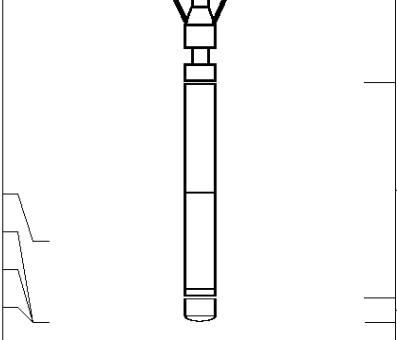




300

400



							
GR	0.72			PGR-020 (10009364)	1.93	1.69	9.50
TSTAMP	0.00			Production Gamma Ray			
ITEMPX	0.00			BUL-006 (10009483)	0.22	1.69	1.20
HVOLTX	0.00			Bullnose Terminator			
		Dataset: 07_02_snowconsulting_govt-baker#1.db: field/well/REPEAT/pass1					
		Total Length: 16.92 ft					
		Total Weight: 159.10 lb					
		O.D. 3.13 in					

Calibration Report	
Database File:	07_02_snowconsulting_govt-baker#1.db
Dataset Pathname:	MAIN/pass1
Dataset Creation:	Tue Jul 02 15:43:29 2019 by Log SCH 120430

Gamma Ray Calibration Report		
Serial Number:	10009364	
Tool Model:	020	
Performed:	Wed Jun 05 08:18:50 2019	
Calibrator Value:	1.0	GAPI
Background Reading:	0.0	cps
Calibrator Reading:	1.0	cps
Sensitivity:	0.7000	GAPI/cps

Multi-finger Imaging Tool Calibration Report			
Serial Number:		215483	
Number of Fingers:		40	
Tool Model:		027	
Inclinometer Calibration Report			
Performed:		Tue Oct 31 15:17:41 2017	
Calibration Angle:		37	
		Inc X	Inc Y
Vertical:		1967	1979
Finger 1 up:		1783	1799
Finger 31 up:		2145	1802
Finger 21 up:		2133	2165
Finger 11 up:		1785	2161
Sensitivity ratio:	0.979362		
X-axis angle:	134.32		
Deviation const.:	333.152		

Finger Calibration Report									
	Performed: Wed Oct 17 18:49:39 2018								
Ring size:	3		4		5		6		7
(in)		Sens		Sens		Sens		Sens	
Finger 01:	1044	321.0	1365	356.0	1721	379.0	2100	382.0	2482
Finger 02:	1037	308.0	1345	345.0	1690	363.0	2053	374.0	2427
Finger 03:	1150	314.0	1464	346.0	1810	363.0	2173	373.0	2546
Finger 04:	1181	325.0	1506	357.0	1863	372.0	2235	379.0	2614
Finger 05:	1053	316.0	1369	350.0	1719	368.0	2087	376.0	2463
Finger 06:	1122	306.0	1428	337.0	1765	355.0	2120	372.0	2492
Finger 07:	1114	295.0	1409	324.0	1733	330.0	2063	332.0	2395
Finger 08:	1170	316.0	1486	345.0	1831	360.0	2191	369.0	2560

Finger 09:	1086	300.0	1386	335.0	1721	357.0	2078	369.0	2447
Finger 10:	982	296.0	1278	329.0	1607	349.0	1956	358.0	2314
Finger 11:	1145	290.0	1435	309.0	1744	322.0	2066	329.0	2395
Finger 12:	1173	292.0	1465	314.0	1779	324.0	2103	328.0	2431
Finger 13:	1103	293.0	1396	321.0	1717	343.0	2060	354.0	2414
Finger 14:	1032	311.0	1343	346.0	1689	369.0	2058	376.0	2434
Finger 15:	1190	304.0	1494	324.0	1818	337.0	2155	340.0	2495
Finger 16:	1073	304.0	1377	335.0	1712	361.0	2073	367.0	2440
Finger 17:	1007	292.0	1299	327.0	1626	349.0	1975	351.0	2326
Finger 18:	1040	304.0	1344	331.0	1675	357.0	2032	350.0	2382
Finger 19:	1203	332.0	1535	355.0	1890	373.0	2263	372.0	2635
Finger 20:	936	294.0	1230	329.0	1559	360.0	1919	359.0	2278
Finger 21:	1030	281.0	1311	306.0	1617	332.0	1949	348.0	2297
Finger 22:	1152	291.0	1443	315.0	1758	343.0	2101	356.0	2457
Finger 23:	1104	303.0	1407	333.0	1740	351.0	2091	356.0	2447
Finger 24:	1049	314.0	1363	350.0	1713	377.0	2090	380.0	2470
Finger 25:	1262	321.0	1583	337.0	1920	352.0	2272	354.0	2626
Finger 26:	1088	320.0	1408	347.0	1755	366.0	2121	368.0	2489
Finger 27:	1042	305.0	1347	332.0	1679	349.0	2028	352.0	2380
Finger 28:	1254	328.0	1582	351.0	1933	362.0	2295	359.0	2654
Finger 29:	1094	316.0	1410	347.0	1757	366.0	2123	371.0	2494
Finger 30:	1186	299.0	1485	326.0	1811	350.0	2161	358.0	2519
Finger 31:	1228	319.0	1547	339.0	1886	353.0	2239	352.0	2591
Finger 32:	1097	307.0	1404	338.0	1742	359.0	2101	365.0	2466
Finger 33:	1275	304.0	1579	329.0	1908	346.0	2254	351.0	2605
Finger 34:	1130	317.0	1447	348.0	1795	364.0	2159	368.0	2527
Finger 35:	1251	322.0	1573	347.0	1920	359.0	2279	362.0	2641
Finger 36:	1176	316.0	1492	341.0	1833	351.0	2184	351.0	2535
Finger 37:	1083	290.0	1373	322.0	1695	340.0	2035	349.0	2384
Finger 38:	1090	311.0	1401	343.0	1744	360.0	2104	368.0	2472
Finger 39:	1117	314.0	1431	347.0	1778	360.0	2138	371.0	2509
Finger 40:	1192	297.0	1489	323.0	1812	337.0	2149	357.0	2506



Company	SNOW CONSULTING
Well	GOVT-BAKER #1A
Field	DEBEQUE
County	MESA
State	COLORADO