



Crestone Peak Resources

Schlumberger

Plan 0

Borehole:	Well:	Field:	Structure:
Original Hole	Sunset 4-65 21-22 1AH	CO, Arapahoe County (NAD 83 CZ)	Crestone Peak 21-04S-65W (Grande North Pad)

Gravity & Magnetic Parameters				Surface Location				Miscellaneous			
Model:	HDGM 2020	Dip:	66.336°	Date:	18-May-2020	Lat:	N 39 41 39.04	Northing:	1678785.81ftUS	Grid Conv:	0.5199°
MagDec:	8.573°	FS:	51549.619nT	Gravity FS:	998.912mgn (9.80665 Based)	Lon:	W 104 40 32.41	Easting:	3231968.4ftUS	Scale Fact:	0.99998943
								Slot:			
								Sunset 4-65 21-22 1AH			
								TVD Ref:			
								KB 28ft(5687.9ft above MSL)			
								Plan:			
								Sunset 4-65 21-22 1AH Plan #0			

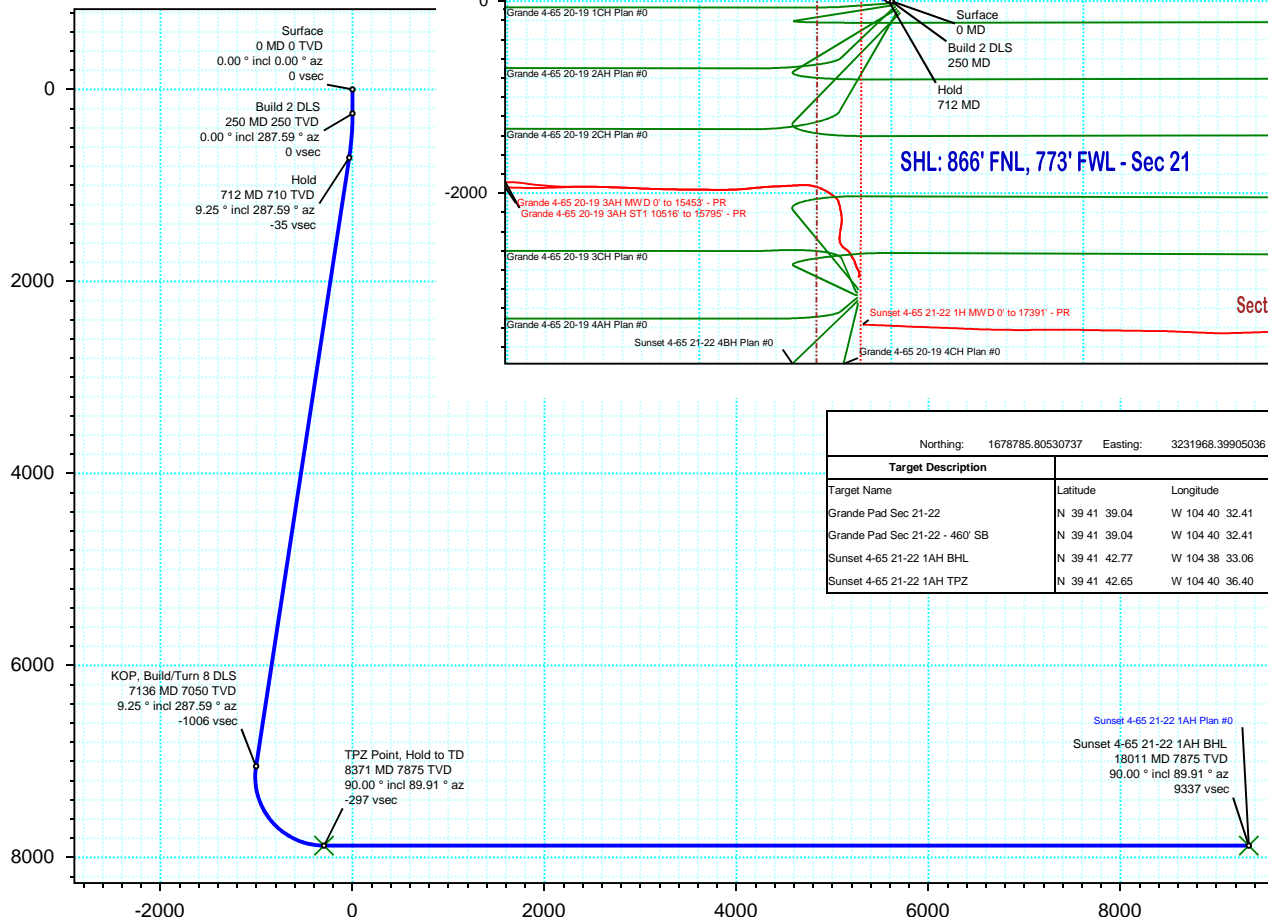
Proposal

EW (ft) Scale = 1:2000.00(ft)

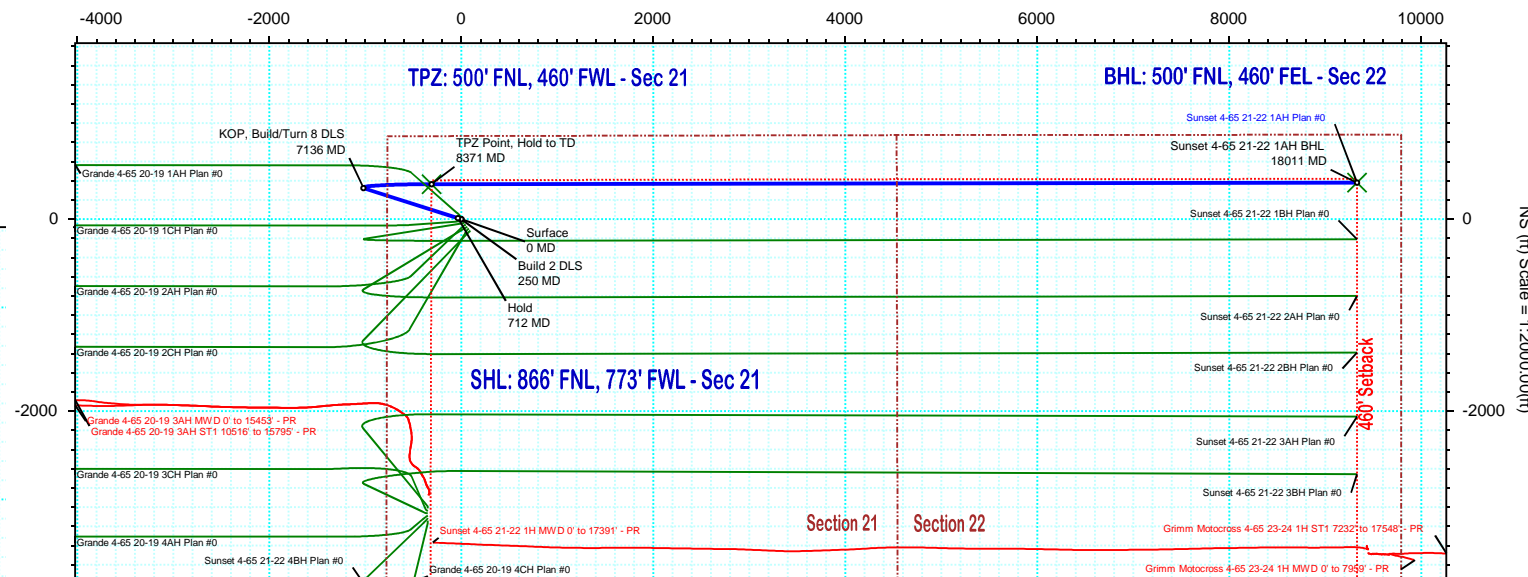


True North
Tot Corr (M->T 8.573°)
Mag Dec (8.573°)
Grid Conv (0.520°)

TVD (ft) Scale = 1:2000.00(ft)



Vertical Section (ft) Azim = 87.67° Scale = 1:2000.00(ft) Origin = 0N/-S, 0E/-W



NS (ft) Scale = 1:2000.00(ft)

				Surface Location					
Northing: 1678785.80530737		Easting: 3231968.39905036		Latitude: N 39 41 39.04		Longitude: W 104 40 32.41		VSec Azimuth: 87.67	
Target Description		Grid Coord						Local Coord	
Target Name		Latitude	Longitude	Northing	Easting	TVD	VSec	N(+)/S(-)	E(+)/W(-)
Grande Pad Sec 21-22		N 39 41 39.04	W 104 40 32.41	1678785.81	3231968.40	5687.90	0.00	0.00	0.00
Grande Pad Sec 21-22 - 460' SB		N 39 41 39.04	W 104 40 32.41	1678785.81	3231968.40	5687.90	0.00	0.00	0.00
Sunset 4-65 21-22 1AH BHL		N 39 41 42.77	W 104 38 33.06	1679249.88	3241293.32	7875.00	9336.58	379.45	9328.87
Sunset 4-65 21-22 1AH TPZ		N 39 41 42.65	W 104 40 36.40	1679147.95	3231653.31	7875.00	-296.71	365.00	-311.80

Critical Points								
Critical Point	MD	INCL	AZIM	TVD	VSEC	N(+)/S(-)	E(+)/W(-)	DLS
Surface	0.00	0.00	0.00	0.00	0.00	0.00	0.00	
Build 2 DLS	250.00	0.00	287.59	250.00	0.00	0.00	0.00	0.00
Hold	712.39	9.25	287.59	710.38	-35.01	11.25	-35.49	2.00
KOP, Build/Turn 8 DLS	7135.64	9.25	287.59	7050.15	-1005.51	323.16	-1019.49	0.00
TPZ Point, Hold to TD	8370.73	90.00	89.91	7875.00	-296.71	365.00	-311.80	8.00
Sunset 4-65 21-22 1AH BHL	18011.41	90.00	89.91	7875.00	9336.58	379.45	9328.87	0.00

Sunset 4-65 21-22 1AH Plan #0 Proposal Geodetic Report

(Def Plan)

Report Date: May 21, 2020 - 03:55 PM
Client: Crestone Peak Resources
Field: CO, Arapahoe County (NAD 83 CZ)
Structure / Slot: Crestone Peak 21-04S-65W (Grande North Pad) / Sunset 4-65 21-22 1AH
Well: Sunset 4-65 21-22 1AH
Borehole: Original Hole
UWI / API#: Unknown / Unknown
Survey Name: Sunset 4-65 21-22 1AH Plan #0
Survey Date: March 19, 2020
Tort / AHD / DDI / ERD Ratio: 108.056 ° / 11440.235 ft / 6.451 / 1.453
Coordinate Reference System: NAD83 Colorado State Plane, Central Zone, US Feet
Location Lat / Long: N 39° 41' 39.04080", W 104° 40' 32.40840"
Location Grid N/E Y/X: N 1678785.805 ftUS, E 3231968.399 ftUS
CRS Grid Convergence Angle: 0.5199 °
Grid Scale Factor: 0.99998943
Version / Patch: 2.10.810.1

Survey / DLS Computation: Minimum Curvature / Lubinski
Vertical Section Azimuth: 87.671 ° (True North)
Vertical Section Origin: 0.000 ft, 0.000 ft
TVD Reference Datum: KB 28ft
TVD Reference Elevation: 5687.900 ft above MSL
Seabed / Ground Elevation: 5659.900 ft above MSL
Magnetic Declination: 8.573 °
Total Gravity Field Strength: 998.9115mgn (9.80665 Based)
Gravity Model: GARM
Total Magnetic Field Strength: 51549.619 nT
Magnetic Dip Angle: 66.336 °
Declination Date: May 18, 2020
Magnetic Declination Model: HDGM 2020
North Reference: True North
Grid Convergence Used: 0.0000 °
Total Corr Mag North→True North: 8.5733 °
Local Coord Referenced To: Well Head

Comments	MD (ft)	Incl (°)	Azim True (°)	TVD (ft)	VSEC (ft)	NS (ft)	EW (ft)	DLS (°/100ft)	Northing (ftUS)	Easting (ftUS)	Latitude (°)	Longitude (°)
Surface	0.00	0.00	0.00	0.00	0.00	0.00	0.00	N/A	1678785.81	3231968.40	39.694178	-104.675669
Build 2 DLS	100.00	0.00	287.59	100.00	0.00	0.00	0.00	0.00	1678785.81	3231968.40	39.694178	-104.675669
	200.00	0.00	287.59	200.00	0.00	0.00	0.00	0.00	1678785.81	3231968.40	39.694178	-104.675669
	250.00	0.00	287.59	250.00	0.00	0.00	0.00	0.00	1678785.81	3231968.40	39.694178	-104.675669
	300.00	1.00	287.59	300.00	-0.41	0.13	-0.42	2.00	1678785.93	3231967.98	39.694178	-104.675670
	400.00	3.00	287.59	399.93	-3.69	1.19	-3.74	2.00	1678786.96	3231964.65	39.694181	-104.675682
Hold	500.00	5.00	287.59	499.68	-10.25	3.29	-10.39	2.00	1678789.00	3231957.98	39.694187	-104.675706
	600.00	7.00	287.59	599.13	-20.08	6.45	-20.36	2.00	1678792.07	3231947.99	39.694196	-104.675741
	700.00	9.00	287.59	698.15	-33.16	10.66	-33.62	2.00	1678796.16	3231934.68	39.694207	-104.675788
	712.39	9.25	287.59	710.38	-35.01	11.25	-35.49	2.00	1678796.73	3231932.80	39.694209	-104.675795
	800.00	9.25	287.59	796.86	-48.25	15.51	-48.92	0.00	1678800.87	3231919.35	39.694221	-104.675843
	900.00	9.25	287.59	895.56	-63.35	20.36	-64.23	0.00	1678805.58	3231903.98	39.694234	-104.675897
	1000.00	9.25	287.59	994.26	-78.46	25.22	-79.55	0.00	1678810.30	3231888.62	39.694247	-104.675952
	1100.00	9.25	287.59	1092.96	-93.57	30.07	-94.87	0.00	1678815.02	3231873.26	39.694261	-104.676006
	1200.00	9.25	287.59	1191.66	-108.68	34.93	-110.19	0.00	1678819.73	3231857.90	39.694274	-104.676061
	1300.00	9.25	287.59	1290.36	-123.79	39.79	-125.51	0.00	1678824.45	3231842.53	39.694287	-104.676115
	1400.00	9.25	287.59	1389.06	-138.90	44.64	-140.83	0.00	1678829.17	3231827.17	39.694301	-104.676169
	1500.00	9.25	287.59	1487.76	-154.01	49.50	-156.15	0.00	1678833.88	3231811.81	39.694314	-104.676224
	1600.00	9.25	287.59	1586.46	-169.12	54.35	-171.47	0.00	1678838.60	3231796.45	39.694327	-104.676278
	1700.00	9.25	287.59	1685.16	-184.23	59.21	-186.79	0.00	1678843.32	3231781.08	39.694341	-104.676333
	1800.00	9.25	287.59	1783.86	-199.34	64.07	-202.11	0.00	1678848.03	3231765.72	39.694354	-104.676387
	1900.00	9.25	287.59	1882.56	-214.45	68.92	-217.43	0.00	1678852.75	3231750.36	39.694367	-104.676442
	2000.00	9.25	287.59	1981.26	-229.56	73.78	-232.75	0.00	1678857.47	3231735.00	39.694381	-104.676496
	2100.00	9.25	287.59	2079.96	-244.67	78.63	-248.07	0.00	1678862.18	3231719.63	39.694394	-104.676551
	2200.00	9.25	287.59	2178.66	-259.77	83.49	-263.38	0.00	1678866.90	3231704.27	39.694407	-104.676605
	2300.00	9.25	287.59	2277.36	-274.88	88.35	-278.70	0.00	1678871.62	3231688.91	39.694421	-104.676659
	2400.00	9.25	287.59	2376.06	-289.99	93.20	-294.02	0.00	1678876.33	3231673.55	39.694434	-104.676714
	2500.00	9.25	287.59	2474.76	-305.10	98.06	-309.34	0.00	1678881.05	3231658.18	39.694447	-104.676768
	2600.00	9.25	287.59	2573.46	-320.21	102.91	-324.66	0.00	1678885.77	3231642.82	39.694461	-104.676823
	2700.00	9.25	287.59	2672.16	-335.32	107.77	-339.98	0.00	1678890.48	3231627.46	39.694474	-104.676877
	2800.00	9.25	287.59	2770.86	-350.43	112.63	-355.30	0.00	1678895.20	3231612.10	39.694487	-104.676932
	2900.00	9.25	287.59	2869.56	-365.54	117.48	-370.62	0.00	1678899.92	3231596.73	39.694501	-104.676986
	3000.00	9.25	287.59	2968.26	-380.65	122.34	-385.94	0.00	1678904.63	3231581.37	39.694514	-104.677040
	3100.00	9.25	287.59	3066.96	-395.76	127.19	-401.26	0.00	1678909.35	3231566.01	39.694527	-104.677095
	3200.00	9.25	287.59	3165.66	-410.87	132.05	-416.58	0.00	1678914.07	3231550.65	39.694540	-104.677149
	3300.00	9.25	287.59	3264.36	-425.98	136.91	-431.90	0.00	1678918.78	3231535.28	39.694554	-104.677204
3400.00	9.25	287.59	3363.06	-441.08	141.76	-447.22	0.00	1678923.50	3231519.92	39.694567	-104.677258	
3500.00	9.25	287.59	3461.76	-456.19	146.62	-462.54	0.00	1678928.22	3231504.56	39.694580	-104.677313	
3600.00	9.25	287.59	3560.46	-471.30	151.47	-477.85	0.00	1678932.93	3231489.20	39.694594	-104.677367	
3700.00	9.25	287.59	3659.16	-486.41	156.33	-493.17	0.00	1678937.65	3231473.83	39.694607	-104.677422	
3800.00	9.25	287.59	3757.86	-501.52	161.19	-508.49	0.00	1678942.37	3231458.47	39.694620	-104.677476	
3900.00	9.25	287.59	3856.56	-516.63	166.04	-523.81	0.00	1678947.08	3231443.11	39.694634	-104.677530	
4000.00	9.25	287.59	3955.26	-531.74	170.90	-539.13	0.00	1678951.80	3231427.75	39.694647	-104.677585	
4100.00	9.25	287.59	4053.96	-546.85	175.75	-554.45	0.00	1678956.52	3231412.38	39.694660	-104.677639	
4200.00	9.25	287.59	4152.66	-561.96	180.61	-569.77	0.00	1678961.23	3231397.02	39.694674	-104.677694	
4300.00	9.25	287.59	4251.37	-577.07	185.47	-585.09	0.00	1678965.95	3231381.66	39.694687	-104.677748	
4400.00	9.25	287.59	4350.07	-592.18	190.32	-600.41	0.00	1678970.67	3231366.30	39.694700	-104.677803	
4500.00	9.25	287.59	4448.77	-607.29	195.18	-615.73	0.00	1678975.38	3231350.93	39.694714	-104.677857	
4600.00	9.25	287.59	4547.47	-622.40	200.03	-631.05	0.00	1678980.10	3231335.57	39.694727	-104.677911	
4700.00	9.25	287.59	4646.17	-637.50	204.89	-646.37	0.00	1678984.82	3231320.21	39.694740	-104.677966	
4800.00	9.25	287.59	4744.87	-652.61	209.75	-661.69	0.00	1678989.54	3231304.85	39.694754	-104.678020	
4900.00	9.25	287.59	4843.57	-667.72	214.60	-677.00	0.00	1678994.25	3231289.48	39.694767	-104.678075	
5000.00	9.25	287.59	4942.27	-682.83	219.46	-692.32	0.00	1678998.97	3231274.12	39.694780	-104.678129	
5100.00	9.25	287.59	5040.97	-697.94	224.31	-707.64	0.00	1679003.69	3231258.76	39.694794	-104.678184	
5200.00	9.25	287.59	5139.67	-713.05	229.17	-722.96	0.00	1679008.40	3231243.40	39.694807	-104.678238	
5300.00	9.25	287.59	5238.37	-728.16	234.02	-738.28	0.00	1679013.12	3231228.03	39.694820	-104.678293	
5400.00	9.25	287.59	5337.07	-743.27	238.88	-753.60	0.00	1679017.84	3231212.67	39.694834	-104.678347	
5500.00	9.25	287.59	5435.77	-758.38	243.74	-768.92	0.00	1679022.55	3231197.31	39.694847	-104.678401	
5600.00	9.25	287.59	5534.47	-773.49	248.59	-784.24	0.00	1679027.27	3231181.95	39.694860	-104.678456	
5700.00	9.25	287.59	5633.17	-788.60	253.45	-799.56	0.00	1679031.99	3231166.58	39.694874	-104.678510	
5800.00	9.25	287.59	5731.87	-803.71	258.30	-814.88	0.00	1679036.70	3231151.22	39.694887	-104.678565	
5900.00	9.25	287.59	5830.57	-818.82	263.16	-830.20	0.00	1679041.42	3231135.86	39.694900	-104.678619	
6000.00	9.25	287.59	5929.27	-833.92	268.02	-845.52	0.00	1679046.14	3231120.50	39.694914	-104.678674	
6100.00	9.25	287.59	6027.97	-849.03	272.87	-860.84	0.00	1679050.85	3231105.13	39.694927	-104.678728	
6200.00	9.25	287.59	6126.67	-864.14	277.73	-876.15	0.00	1679055.57	3231089.77	39.694940	-104.678782	
6300.00	9.25	287.59	6225.37	-879.25	282.58	-891.47	0.00	1679060.29	3231074.41	39.694954	-104.678837	
6400.00	9.25	287.59	6324.07	-894.36	287.44	-906.79	0.00	1679065.00	3231059.05	39.694967	-104.678891	
6500.00	9.25	287.59	6422.77	-909.47	292.30	-922.11	0.00	1679069.72	3231043.68	39.694980	-104.678946	
6600.00	9.25	287.59	6521.47	-924.58	297.15	-937.43	0.00	1679074.44	3231028.32	39.694994	-104.679000	
6700.00	9.25	287.59	6620.17	-939.69	302.01	-952.75	0.00	1679079.15	3231012.96	39.695007	-104.679055	
6800.00	9.25	287.59	6718.87	-954.80	306.86	-968.07	0.00	1679083.87	3230997.60	39.695020	-104.679109	
6900.00	9.25	287.59	6817.57	-969.91	311.72	-983.39	0.00	1679088.59	3230982.23	39.695034	-104.679164	
7000.00	9.25	287.59	6916.27	-985.02	316.58	-998.71	0.00	1679093.30	3230966.87	39.695047	-104.679218	
7100.00	9.25	287.59	7014.97	-1000.13	321.43	-1014.03	0.00	1679098.02	3230951.51	39.695060	-104.679272	
KOP, Build/Turn 8 DLS	7135.64	9.25	287.59	7050.15	-1005.51	323.16	-1019.49	0.00	1679099.70	3230946.03	39.695065	-104.679292
	7200.00	4.62	307.59	7114.03	-1012.37	326.31	-1026.48	8.00	1679102.78	3230939.02	39.695074	-104.679317

Comments	MD (ft)	Incl (°)	Azim True (°)	TVD (ft)	VSEC (ft)	NS (ft)	EW (ft)	DLS (°/100ft)	Northing (ftUS)	Easting (ftUS)	Latitude (°)	Longitude (°)
	7300.00	5.18	56.88	7213.82	-1011.58	331.24	-1025.89	8.00	1679107.72	3230939.56	39.695087	-104.679315
	7400.00	12.66	77.20	7312.57	-996.90	336.15	-1011.40	8.00	1679112.76	3230954.00	39.695101	-104.679263
	7500.00	20.53	82.33	7408.33	-968.63	340.92	-983.30	8.00	1679117.79	3230982.06	39.695114	-104.679163
	7600.00	28.47	84.68	7499.26	-927.30	345.48	-942.12	8.00	1679122.72	3231023.20	39.695126	-104.679017
	7700.00	36.44	86.07	7583.57	-873.73	349.73	-888.67	8.00	1679127.45	3231076.60	39.695138	-104.678827
	7800.00	44.41	87.02	7659.64	-808.95	353.58	-824.00	8.00	1679131.89	3231141.24	39.695149	-104.678597
	7900.00	52.40	87.73	7725.97	-734.22	356.98	-749.35	8.00	1679135.96	3231215.85	39.695158	-104.678332
	8000.00	60.38	88.30	7781.28	-651.01	359.83	-666.19	8.00	1679139.58	3231298.98	39.695166	-104.678036
	8100.00	68.37	88.79	7824.50	-560.93	362.11	-576.13	8.00	1679142.66	3231389.02	39.695172	-104.677716
	8200.00	76.36	89.23	7854.77	-465.74	363.74	-480.92	8.00	1679145.17	3231484.21	39.695177	-104.677378
	8300.00	84.35	89.63	7871.51	-367.28	364.72	-382.42	8.00	1679147.04	3231582.69	39.695179	-104.677028
TPZ Point, Hold to TD	8370.73	90.00	89.91	7875.00	-296.71	365.00	-311.80	8.00	1679147.95	3231653.31	39.695180	-104.676777
	8400.00	90.00	89.91	7875.00	-267.46	365.04	-282.53	0.00	1679148.26	3231682.57	39.695180	-104.676673
	8500.00	90.00	89.91	7875.00	-167.54	365.19	-182.53	0.00	1679149.32	3231782.56	39.695181	-104.676318
	8600.00	90.00	89.91	7875.00	-67.62	365.34	-82.53	0.00	1679150.38	3231882.56	39.695181	-104.675962
	8700.00	90.00	89.91	7875.00	32.31	365.49	17.47	0.00	1679151.44	3231982.55	39.695181	-104.675607
	8800.00	90.00	89.91	7875.00	132.23	365.64	117.47	0.00	1679152.49	3232082.54	39.695182	-104.675252
	8900.00	90.00	89.91	7875.00	232.15	365.79	217.47	0.00	1679153.55	3232182.54	39.695182	-104.674896
	9000.00	90.00	89.91	7875.00	332.08	365.94	317.47	0.00	1679154.61	3232282.53	39.695183	-104.674541
	9100.00	90.00	89.91	7875.00	432.00	366.09	417.47	0.00	1679155.66	3232382.52	39.695183	-104.674185
	9200.00	90.00	89.91	7875.00	531.92	366.24	517.47	0.00	1679156.72	3232482.52	39.695183	-104.673830
	9300.00	90.00	89.91	7875.00	631.85	366.39	617.47	0.00	1679157.78	3232582.51	39.695184	-104.673475
	9400.00	90.00	89.91	7875.00	731.77	366.54	717.47	0.00	1679158.84	3232682.50	39.695184	-104.673119
	9500.00	90.00	89.91	7875.00	831.69	366.69	817.47	0.00	1679159.89	3232782.50	39.695185	-104.672764
	9600.00	90.00	89.91	7875.00	931.62	366.84	917.47	0.00	1679160.95	3232882.49	39.695185	-104.672409
	9700.00	90.00	89.91	7875.00	1031.54	366.99	1017.47	0.00	1679162.01	3232982.48	39.695185	-104.672053
	9800.00	90.00	89.91	7875.00	1131.47	367.14	1117.47	0.00	1679163.07	3233082.48	39.695186	-104.671698
	9900.00	90.00	89.91	7875.00	1231.39	367.29	1217.47	0.00	1679164.12	3233182.47	39.695186	-104.671343
	10000.00	90.00	89.91	7875.00	1331.31	367.44	1317.47	0.00	1679165.18	3233282.46	39.695187	-104.670987
	10100.00	90.00	89.91	7875.00	1431.24	367.59	1417.47	0.00	1679166.24	3233382.45	39.695187	-104.670632
	10200.00	90.00	89.91	7875.00	1531.16	367.74	1517.47	0.00	1679167.29	3233482.45	39.695187	-104.670277
	10300.00	90.00	89.91	7875.00	1631.08	367.89	1617.47	0.00	1679168.35	3233582.44	39.695188	-104.669921
	10400.00	90.00	89.91	7875.00	1731.01	368.04	1717.47	0.00	1679169.41	3233682.43	39.695188	-104.669566
	10500.00	90.00	89.91	7875.00	1830.93	368.19	1817.47	0.00	1679170.47	3233782.43	39.695189	-104.669210
	10600.00	90.00	89.91	7875.00	1930.85	368.34	1917.47	0.00	1679171.52	3233882.42	39.695189	-104.668855
	10700.00	90.00	89.91	7875.00	2030.78	368.49	2017.47	0.00	1679172.58	3233982.41	39.695189	-104.668500
	10800.00	90.00	89.91	7875.00	2130.70	368.64	2117.47	0.00	1679173.64	3234082.41	39.695190	-104.668144
	10900.00	90.00	89.91	7875.00	2230.62	368.79	2217.47	0.00	1679174.70	3234182.40	39.695190	-104.667789
	11000.00	90.00	89.91	7875.00	2330.55	368.94	2317.47	0.00	1679175.75	3234282.39	39.695191	-104.667434
	11100.00	90.00	89.91	7875.00	2430.47	369.09	2417.47	0.00	1679176.81	3234382.39	39.695191	-104.667078
	11200.00	90.00	89.91	7875.00	2530.39	369.24	2517.47	0.00	1679177.87	3234482.38	39.695191	-104.666723
	11300.00	90.00	89.91	7875.00	2630.32	369.39	2617.47	0.00	1679178.92	3234582.37	39.695192	-104.666368
	11400.00	90.00	89.91	7875.00	2730.24	369.54	2717.47	0.00	1679179.98	3234682.37	39.695192	-104.666012
	11500.00	90.00	89.91	7875.00	2830.16	369.69	2817.47	0.00	1679181.04	3234782.36	39.695192	-104.665657
	11600.00	90.00	89.91	7875.00	2930.09	369.84	2917.47	0.00	1679182.10	3234882.35	39.695193	-104.665302
	11700.00	90.00	89.91	7875.00	3030.01	369.99	3017.47	0.00	1679183.15	3234982.34	39.695193	-104.664946
	11800.00	90.00	89.91	7875.00	3129.93	370.14	3117.47	0.00	1679184.21	3235082.34	39.695194	-104.664591
	11900.00	90.00	89.91	7875.00	3229.86	370.29	3217.46	0.00	1679185.27	3235182.33	39.695194	-104.664235
	12000.00	90.00	89.91	7875.00	3329.78	370.44	3317.46	0.00	1679186.32	3235282.32	39.695194	-104.663880
	12100.00	90.00	89.91	7875.00	3429.70	370.59	3417.46	0.00	1679187.38	3235382.32	39.695195	-104.663525
	12200.00	90.00	89.91	7875.00	3529.63	370.74	3517.46	0.00	1679188.44	3235482.31	39.695195	-104.663169
	12300.00	90.00	89.91	7875.00	3629.55	370.89	3617.46	0.00	1679189.50	3235582.30	39.695195	-104.662814
	12400.00	90.00	89.91	7875.00	3729.47	371.04	3717.46	0.00	1679190.55	3235682.30	39.695196	-104.662459
	12500.00	90.00	89.91	7875.00	3829.40	371.19	3817.46	0.00	1679191.61	3235782.29	39.695196	-104.662103
	12600.00	90.00	89.91	7875.00	3929.32	371.34	3917.46	0.00	1679192.67	3235882.28	39.695197	-104.661748
	12700.00	90.00	89.91	7875.00	4029.24	371.49	4017.46	0.00	1679193.73	3235982.28	39.695197	-104.661393
	12800.00	90.00	89.91	7875.00	4129.17	371.64	4117.46	0.00	1679194.78	3236082.27	39.695197	-104.661037
	12900.00	90.00	89.91	7875.00	4229.09	371.79	4217.46	0.00	1679195.84	3236182.26	39.695198	-104.660682
	13000.00	90.00	89.91	7875.00	4329.01	371.94	4317.46	0.00	1679196.90	3236282.26	39.695198	-104.660326
	13100.00	90.00	89.91	7875.00	4428.94	372.09	4417.46	0.00	1679197.95	3236382.25	39.695198	-104.659971
	13200.00	90.00	89.91	7875.00	4528.86	372.24	4517.46	0.00	1679199.01	3236482.24	39.695199	-104.659616
	13300.00	90.00	89.91	7875.00	4628.78	372.39	4617.46	0.00	1679200.07	3236582.24	39.695199	-104.659260
	13400.00	90.00	89.91	7875.00	4728.71	372.54	4717.46	0.00	1679201.13	3236682.23	39.695200	-104.658905
	13500.00	90.00	89.91	7875.00	4828.63	372.69	4817.46	0.00	1679202.18	3236782.22	39.695200	-104.658550
	13600.00	90.00	89.91	7875.00	4928.55	372.84	4917.46	0.00	1679203.24	3236882.21	39.695200	-104.658194
	13700.00	90.00	89.91	7875.00	5028.48	372.99	5017.46	0.00	1679204.30	3236982.21	39.695201	-104.657839
	13800.00	90.00	89.91	7875.00	5128.40	373.14	5117.46	0.00	1679205.36	3237082.20	39.695201	-104.657484
	13900.00	90.00	89.91	7875.00	5228.32	373.29	5217.46	0.00	1679206.41	3237182.19	39.695201	-104.657128
	14000.00	90.00	89.91	7875.00	5328.25	373.44	5317.46	0.00	1679207.47	3237282.19	39.695202	-104.656773
	14100.00	90.00	89.91	7875.00	5428.17	373.59	5417.46	0.00	1679208.53	3237382.18	39.695202	-104.656418
	14200.00	90.00	89.91	7875.00	5528.09	373.74	5517.46	0.00	1679209.58	3237482.17	39.695202	-104.656062
	14300.00	90.00	89.91	7875.00	5628.02	373.88	5617.46	0.00	1679210.64	3237582.17	39.695203	-104.655707
	14400.00	90.00	89.91	7875.00	5727.94	374.03	5717.46	0.00	1679211.70	3237682.16	39.695203	-104.655351
	14500.00	90.00	89.91	7875.00	5827.86	374.18	5817.46	0.00	1679212.76	3237782.15	39.695203	-104.654996
	14600.00	90.00	89.91	7875.00	5927.79	374.33	5917.46	0.00	1679213.81	3237882.15	39.695204	-104.654641
	14700.00	90.00	89.91	7875.00	6027.71	374.48	6017.46	0.00	1679214.87	3237982.14	39.695204	-104.654285
	14800.00	90.00	89.91	7875.00	6127.63	374.63	6117.46	0.00	1679215.93	3238082.13	39.695204	-104.653930
	14900.00	90.00	89.91	7875.00	6227.56	374.78	6217.46	0.00	1679216.98	3238182.13	39.695205	-104.653575
	15000.00	90.00	89.91									

Comments	MD (ft)	Incl (°)	Azim True (°)	TVD (ft)	VSEC (ft)	NS (ft)	EW (ft)	DLS (°/100ft)	Northing (ftUS)	Easting (ftUS)	Latitude (°)	Longitude (°)
Sunset 4-65 21-22 1AH BHL	18000.00	90.00	89.91	7875.00	9325.18	379.43	9317.46	0.00	1679249.76	3241281.91	39.695215	-104.642559
	18011.41	90.00	89.91	7875.00	9336.58	379.45	9328.87	0.00	1679249.88	3241293.32	39.695215	-104.642518

Survey Type: Def Plan

Survey Error Model: ISCWSA Rev 0 *** 3-D 95.000% Confidence 2.7955 sigma
Survey Program:

Description	Part	MD From (ft)	MD To (ft)	EOU Freq (ft)	Hole Size (in)	Casing Diameter (in)	Expected Max Inclination (deg)	Survey Tool Type	Borehole / Survey
	1	0.000	28.000	1/100.000	13.500	9.625		NAL_MWD-NON_SLB-Depth Only	Original Hole / Sunset 4-65 21-22 1AH Plan #0
	1	28.000	2200.000	1/100.000	13.500	9.625		NAL_MWD-NON_SLB	Original Hole / Sunset 4-65 21-22 1AH Plan #0
	1	2200.000	18011.407	1/100.000	8.500	5.500		NAL_MWD_PLUS_0.5_DEG	Original Hole / Sunset 4-65 21-22 1AH Plan #0

Sunset 4-65 21-22 1AH Plan #0 Anti-Collision Summary Report

Analysis Date-24hr Time: May 21, 2020 - 15:56
Client: Crestone Peak Resources
Field: CO, Arapahoe County (NAD 83 CZ)
Structure: Crestone Peak 21-04S-65W (Grande North Pad)
Slot: Sunset 4-65 21-22 1AH
Well: Sunset 4-65 21-22 1AH
Borehole: Original Hole
Scan MD Range: 0.00ft - 18011.41ft

Analysis Method: 3D Least Distance
Reference Trajectory: Sunset 4-65 21-22 1AH Plan #0 (Def Plan)
Depth Interval: Every 10.00 Measured Depth (ft)
Rule Set: D&M AntiCollision Standard S002 v5.1/5.2
Min Pts: All local minima indicated.
Version / Patch: 2.10.810.1
Database \ Project: localhost\drilling-Colorado

Trajectory Error Model: ISCSA0 3-D 95.000% Confidence 2.7955 sigma, for subject well. For offset wells, error model version is specified with each well respectively.

Offset Trajectories Summary

Offset Selection Criteria

Wellhead distance scan: Not performed!
 Selection filters: Definitive Surveys - Definitive Plans - Definitive surveys exclude definitive plans
 - All Non-Def Surveys when no Def-Survey is set in a borehole - All Non-Def Plans when no Def-Plan is set in a borehole

Offset Trajectory	Separation			Allow Dev. (ft)	Sep. Fact.	Controlling Rule	Reference Trajectory		Risk Level			Alert	Status
	Ct-Ct (ft)	MAS (ft)	EOU (ft)				MD (ft)	TVD (ft)	Alert	Minor	Major		

Results highlighted: Sep-Factor separation <= 1.50 ft

Grande 4-65 20-19 1AH Plan #0 (Def Plan)

Warning Alert

24.75	19.99	23.77	4.76	N/A	MAS = 6.09 (m)	0.00	0.00	CtCt<=15m<15.00	Enter Alert				
24.74	19.99	23.76	4.76	N/A	MAS = 6.09 (m)	28.00	28.00		WRP				
21.50	19.99	17.71	1.51	7.30	MAS = 6.09 (m)	550.00	549.45		MinPts				
21.53	19.99	17.67	1.54	7.15	MAS = 6.09 (m)	560.00	559.40		MINPT-O-EOU				
23.04	19.99	18.74	3.05	6.69	MAS = 6.09 (m)	630.00	628.89		MinPt-O-SF				
49.11	19.99	43.39	29.13	10.15	MAS = 6.09 (m)	880.00	875.82	CtCt<=15m>15.00	Exit Alert				
500.83	29.57	480.79	471.26	26.23	OSF1.50	4460.00	4409.29		MinPt-CtCt				
502.04	33.01	479.71	469.04	23.47	OSF1.50	4910.00	4853.44		MINPT-O-EOU				
503.67	34.96	480.04	468.71	22.20	OSF1.50	5150.00	5090.32		MinPt-O-ADP				
184.83	56.26	146.99	128.56	4.99	OSF1.50	7860.00	7700.69	OSF<5.00	Enter Alert				
183.50	56.60	145.53	126.90	4.93	OSF1.50	7880.00	7713.55		MinPts				
183.75	56.67	145.64	127.08	4.92	OSF1.50	7890.00	7719.82		MinPt-O-SF				
185.62	56.65	147.53	128.97	4.98	OSF1.50	7910.00	7732.02	OSF>5.00	Exit Alert				
9836.45	66.07	9792.08	9770.38	226.67	OSF1.50	18011.41	7875.00		TD				

Grande 4-65 20-19 1CH Plan #0 (Def Plan)

Warning Alert

25.03	20.22	24.05	4.81	N/A	MAS = 6.16 (m)	0.00	0.00	CtCt<=15m<15.00	Enter Alert				
25.03	20.22	24.04	4.81	36077.50	MAS = 6.16 (m)	28.00	28.00		WRP				
25.03	20.22	22.88	4.81	20.56	MAS = 6.16 (m)	250.00	250.00		MinPts				
25.07	20.22	22.84	4.85	19.37	MAS = 6.16 (m)	270.00	270.00		MINPT-O-EOU				
35.70	20.22	32.24	15.48	14.07	MAS = 6.16 (m)	570.00	569.33		MinPt-O-SF				
48.39	20.22	44.17	28.17	14.66	MAS = 6.16 (m)	700.00	698.15	CtCt<=15m>15.00	Exit Alert				
635.84	28.64	616.42	607.20	34.49	OSF1.50	4430.00	4379.68		MinPt-O-SF				
653.44	36.82	628.57	616.62	27.31	OSF1.50	5720.00	5652.91		MinPt-CtCt				
655.82	43.55	626.46	612.27	23.07	OSF1.50	6520.00	6442.51		MINPT-O-EOU				
659.41	47.84	627.19	611.57	21.08	OSF1.50	6990.00	6906.40		MinPt-O-EOU				
423.46	51.01	389.13	372.45	12.67	OSF1.50	7890.00	7719.82		MinPt-O-SF				
422.83	50.87	388.50	371.96	12.68	OSF1.50	7910.00	7732.02		MinPts				
9791.97	70.27	9744.79	9721.70	211.97	OSF1.50	18011.41	7875.00		TD				

Sunset 4-65 21-22 1BH Plan #0 (Def Plan)

Warning Alert

50.06	32.81	49.07	17.25	N/A	MAS = 10.00 (m)	0.00	0.00		Surface				
50.06	32.81	49.07	17.25	24543.93	MAS = 10.00 (m)	28.00	28.00		WRP				
50.06	32.81	47.90	17.25	41.94	MAS = 10.00 (m)	250.00	250.00		MinPts				
50.11	32.81	47.84	17.30	38.44	MAS = 10.00 (m)	280.00	280.00		MINPT-O-EOU				
167.22	32.81	151.03	134.41	10.93	MAS = 10.00 (m)	2200.00	2178.66		MinPt-O-SF				
526.69	57.35	488.12	469.33	13.99	OSF1.50	7135.64	7050.15		MinPt-O-SF				
594.38	59.09	554.66	535.29	15.32	OSF1.50	8370.73	7875.00		MinPt-CtCt				
594.38	179.04	474.70	415.35	5.00	OSF1.50	11200.00	7875.00	OSF<5.00	Enter Alert				
594.39	526.95	242.76	67.44	1.69	OSF1.50	18011.41	7875.00		MinPts				

Sunset 4-65 21-22 2AH Plan #0 (Def Plan)

Warning Alert

100.01	32.81	99.02	67.20	N/A	MAS = 10.00 (m)	0.00	0.00		Surface				
100.01	32.81	99.02	67.20	17828.81	MAS = 10.00 (m)	28.00	28.00		WRP				
100.01	32.81	97.85	67.20	84.57	MAS = 10.00 (m)	250.00	250.00		MinPts				
100.02	32.81	97.83	67.21	82.47	MAS = 10.00 (m)	260.00	260.00		MINPT-O-EOU				
331.01	32.81	314.76	298.20	21.61	MAS = 10.00 (m)	2200.00	2178.66		MinPt-O-SF				
1051.60	57.91	1012.67	983.69	27.69	OSF1.50	7135.64	7050.15		MinPt-O-SF				
1179.54	354.57	942.83	824.97	5.00	OSF1.50	14630.00	7875.00	OSF<5.00	Enter Alert				
1179.50	529.22	826.36	650.28	3.35	OSF1.50	18010.00	7875.00		MinPt-CtCt				
1179.50	529.26	826.33	650.24	3.35	OSF1.50	18011.41	7875.00		MinPts				

Grande 4-65 20-19 2AH Plan #0 (Def Plan)

Pass

75.09	32.81	74.10	42.28	N/A	MAS = 10.00 (m)	0.00	0.00		Surface				
75.09	32.81	74.10	42.28	20847.39	MAS = 10.00 (m)	28.00	28.00		WRP				
75.09	32.81	72.93	42.28	63.30	MAS = 10.00 (m)	250.00	250.00		MinPts				
75.13	32.81	72.91	42.32	59.89	MAS = 10.00 (m)	270.00	270.00		MINPT-O-EOU				
119.01	32.81	113.96	86.20	29.03	MAS = 10.00 (m)	850.00	846.21		MinPt-O-SF				
163.20	32.81	157.10	130.39	31.71	MAS = 10.00 (m)	1160.00	1152.18		MinPt-O-SF				
325.65	32.81	313.53	292.84	29.16	MAS = 10.00 (m)	2200.00	2178.66		MinPt-O-SF				
1030.06	50.63	995.98	979.43	31.09	OSF1.50	7135.64	7050.15		MinPt-O-SF				
1010.49	52.06	975.45	958.43	29.65	OSF1.50	7780.00	7645.16		MinPt-O-SF				
1009.12	51.90	974.19	957.21	29.70	OSF1.50	7840.00	7687.42		MinPts				
9885.62	70.35	9838.40	9815.27	213.75	OSF1.50	18011.41	7875.00		TD				

Grande 4-65 20-19 2CH Plan #0 (Def Plan)

Pass

125.04	32.81	124.05	92.23	N/A	MAS = 10.00 (m)	0.00	0.00		Surface				
125.04	32.81	124.04	92.23	16423.01	MAS = 10.00 (m)	28.00	28.00		WRP				
125.04	32.81	122.94	92.23	111.09	MAS = 10.00 (m)	240.00	240.00		MinPts				
125.05	32.81	122.87	92.24	103.47	MAS = 10.00 (m)	260.00	260.00		MINPT-O-EOU				
195.80	32.81	190.01	163.00	40.52	MAS = 10.00 (m)	1000.00	994.26		MinPt-O-SF				
376.93	32.81	365.33	344.12	35.44	MAS = 10.00 (m)	2200.00	2178.66		MinPt-O-SF				
652.44	32.81	636.98	619.63	45.01	MAS = 10.00 (m)	3790.00	3747.99		MinPt-O-SF				
1474.20	54.11	1437.80	1420.08	41.60	OSF1.50	7135.64	7050.15		MinPt-O-SF				

...Sunset 4-65 21-22 1AH\Original Hole\Sunset 4-65 21-22 1AH Plan #0

Offset Trajectory	Separation			Allow Dev. (ft)	Sep. Fact.	Controlling Rule	Reference Trajectory		Risk Level			Alert	Status
	Ct-Ct (ft)	MAS (ft)	EOU (ft)				MD (ft)	TVD (ft)	Alert	Minor	Major		
Sunset 4-65 21-22 2BH Plan #0 (Def Plan)	1562.50	55.63	1525.09	1506.87	42.88	OSF1.50	7890.00	7719.82				MinPt-O-SF	Pass
	1565.81	55.78	1528.30	1510.09	42.84	OSF1.50	7950.00	7755.08				MinPt-O-SF	
	1572.15	55.99	1534.50	1516.16	42.85	OSF1.50	8040.00	7800.07				MinPt-O-SF	
	1583.72	56.39	1545.80	1527.33	42.85	OSF1.50	8160.00	7844.26				MinPt-O-SF	
	1659.29	59.56	1619.26	1599.73	42.46	OSF1.50	8590.00	7875.00				MinPt-O-SF	
	1676.85	60.21	1636.38	1616.63	42.44	OSF1.50	8650.00	7875.00				MinPt-O-SF	
	9937.34	81.86	9882.44	9855.49	184.29	OSF1.50	18011.41	7875.00				TD	
Grande 4-65 20-19 3AH ST1 10516' to 15795' - PR (Def Survey)	150.07	32.81	149.08	117.26	N/A	MAS = 10.00 (m)	0.00	0.00				Surface	Pass
	150.07	32.81	149.07	117.26	13420.89	MAS = 10.00 (m)	28.00	28.00				WRP	
	150.07	32.81	147.96	117.26	132.90	MAS = 10.00 (m)	240.00	240.00				MinPts	
	150.09	32.81	147.90	117.28	124.48	MAS = 10.00 (m)	260.00	260.00				MINPT-O-EOU	
	482.20	32.81	465.89	449.39	31.41	MAS = 10.00 (m)	2200.00	2178.66				MinPt-O-SF	
	1549.73	58.92	1510.12	1490.81	40.10	OSF1.50	7135.64	7050.15				MinPt-O-SF	
	1770.63	519.20	1424.17	1251.43	5.12	OSF1.50	17810.00	7875.00				MinPt-CtCt	
	1770.63	529.57	1417.26	1241.06	5.02	OSF1.50	18011.41	7875.00				MinPts	
Grande 4-65 20-19 3AH MWD 0' to 15453' - PR (Def Survey)	2884.97	32.81	2883.16	2852.16	N/A	MAS = 10.00 (m)	0.00	0.00				Surface	Pass
	2884.71	32.81	2882.87	2851.90	95340.05	MAS = 10.00 (m)	20.00	20.00				MinPt-O-SF	
	2884.65	32.81	2882.81	2851.84	96921.18	MAS = 10.00 (m)	28.00	28.00				WRP	
	2884.51	32.81	2881.63	2851.70	2716.23	MAS = 10.00 (m)	260.00	260.00				MinPts	
	2884.54	32.81	2881.57	2851.73	2492.73	MAS = 10.00 (m)	290.00	290.00				MINPT-O-EOU	
	2285.04	51.80	2249.61	2233.24	69.74	OSF1.50	7670.00	7559.07				MinPt-O-SF	
	2281.91	51.74	2246.51	2230.17	69.74	OSF1.50	7720.00	7599.50				MinPt-O-SF	
	2279.33	51.63	2244.00	2227.70	69.84	OSF1.50	7820.00	7673.73				MinPts	
	2281.22	51.57	2245.93	2229.64	69.96	OSF1.50	7910.00	7732.02				MinPt-O-SF	
	2291.75	51.70	2256.38	2240.04	70.05	OSF1.50	8050.00	7804.46				MinPt-O-SF	
	2917.31	69.94	2870.15	2847.37	64.00	OSF1.50	9730.00	7875.00				MinPt-O-SF	
	10195.69	99.66	10128.72	10096.03	155.95	OSF1.50	18011.41	7875.00				TD	
Sunset 4-65 21-22 3AH Plan #0 (Def Plan)	3034.40	32.81	3033.42	3001.59	N/A	MAS = 10.00 (m)	0.00	0.00				Surface	Pass
	3034.19	32.81	3033.18	3001.38	130191.97	MAS = 10.00 (m)	20.00	20.00				MinPt-O-SF	
	3034.14	32.81	3033.14	3001.34	146899.44	MAS = 10.00 (m)	28.00	28.00				WRP	
	3034.11	32.81	3032.08	3001.30	2900.50	MAS = 10.00 (m)	250.00	250.00				MinPts	
	3028.45	32.81	3023.03	2995.64	683.23	MAS = 10.00 (m)	770.00	767.25				MinPts	
	3028.52	32.81	3022.97	2995.71	662.32	MAS = 10.00 (m)	810.00	806.73				MINPT-O-EOU	
	2461.90	59.14	2421.90	2402.76	64.27	OSF1.50	7200.00	7114.03				MinPt-O-SF	
	2396.44	62.34	2354.25	2334.10	59.42	OSF1.50	8330.00	7873.84				MinPt-CtCt	
	2435.11	531.55	2080.12	1903.56	6.89	OSF1.50	18011.41	7875.00				MinPts	
Grande 4-65 20-19 3CH Plan #0 (Def Plan)	3059.37	32.81	3058.39	3026.56	N/A	MAS = 10.00 (m)	0.00	0.00				Surface	Pass
	3059.16	32.81	3058.15	3026.35	131140.81	MAS = 10.00 (m)	20.00	20.00				MinPt-O-SF	
	3059.11	32.81	3058.11	3026.31	147194.34	MAS = 10.00 (m)	28.00	28.00				WRP	
	3059.08	32.81	3057.05	3026.27	2925.90	MAS = 10.00 (m)	250.00	250.00				MinPts	
	3059.72	32.81	3056.40	3026.91	1307.98	MAS = 10.00 (m)	510.00	509.64				MINPT-O-EOU	
	2971.77	56.12	2933.94	2915.65	81.22	OSF1.50	7560.00	7463.58				MinPt-O-SF	
	2958.59	55.51	2921.14	2903.08	81.86	OSF1.50	7820.00	7673.73				MinPts	
	2958.58	55.49	2921.15	2903.09	81.89	OSF1.50	7830.00	7680.62				MinPt-CtCt	
	3819.33	88.65	3759.90	3730.68	65.34	OSF1.50	10440.00	7875.00				MinPt-O-SF	
	10325.60	120.37	10245.03	10205.24	129.73	OSF1.50	18011.41	7875.00				TD	
Sunset 4-65 21-22 3BH Plan #0 (Def Plan)	3083.97	32.81	3082.99	3051.17	N/A	MAS = 10.00 (m)	0.00	0.00				Surface	Pass
	3083.77	32.81	3082.76	3050.96	134481.95	MAS = 10.00 (m)	20.00	20.00				MinPt-O-SF	
	3083.72	32.81	3082.72	3050.91	151740.10	MAS = 10.00 (m)	28.00	28.00				WRP	
	3083.69	32.81	3081.66	3050.88	2947.91	MAS = 10.00 (m)	250.00	250.00				MinPts	
	3083.78	32.81	3081.50	3050.97	2386.28	MAS = 10.00 (m)	300.00	300.00				MINPT-O-EOU	
	3077.12	54.01	3040.76	3023.12	87.15	OSF1.50	7135.64	7050.15				MinPt-O-SF	
	2991.69	62.43	2949.66	2929.25	73.29	OSF1.50	8550.00	7875.00				MinPt-CtCt	
	3036.57	529.64	2683.09	2506.93	8.62	OSF1.50	18011.41	7875.00				MinPts	
Grande 4-65 20-19 4AH Plan #0 (Def Plan)	3108.93	32.81	3107.95	3076.12	N/A	MAS = 10.00 (m)	0.00	0.00				Surface	Pass
	3108.74	32.81	3107.73	3075.93	143239.29	MAS = 10.00 (m)	20.00	20.00				MinPt-O-SF	
	3108.69	32.81	3107.69	3075.88	166255.26	MAS = 10.00 (m)	28.00	28.00				WRP	
	3108.67	32.81	3106.63	3075.86	2964.06	MAS = 10.00 (m)	250.00	250.00				MinPts	
	3108.72	32.81	3106.48	3075.91	2476.69	MAS = 10.00 (m)	290.00	290.00				MINPT-O-EOU	
	3549.01	46.68	3517.56	3502.33	116.46	OSF1.50	7135.64	7050.15				MinPt-O-SF	
	4815.63	101.78	4747.45	4713.85	71.65	OSF1.50	11310.00	7875.00				MinPt-O-SF	
	10446.45	136.02	10355.44	10310.42	116.03	OSF1.50	18011.41	7875.00				TD	
Sunset 4-65 21-22 4BH Plan #0 (Def Plan)	3133.91	32.81	3132.92	3101.10	N/A	MAS = 10.00 (m)	0.00	0.00				Surface	Pass
	3133.71	32.81	3132.70	3100.90	146253.59	MAS = 10.00 (m)	20.00	20.00				MinPt-O-SF	
	3133.67	32.81	3132.67	3100.86	170268.10	MAS = 10.00 (m)	28.00	28.00				WRP	
	3133.64	32.81	3131.61	3100.83	2987.11	MAS = 10.00 (m)	250.00	250.00				MinPts	
	3133.70	32.81	3131.46	3100.89	2496.02	MAS = 10.00 (m)	290.00	290.00				MINPT-O-EOU	
	4048.44	50.90	4014.18	3997.54	121.62	OSF1.50	7200.00	7114.03				MinPt-O-SF	
	4164.11	51.47	4129.47	4112.64	123.68	OSF1.50	7840.00	7687.42				MinPt-O-SF	

...Sunset 4-65 21-22 1AH\Original Hole\Sunset 4-65 21-22 1AH Plan #0

Offset Trajectory	Separation			Allow Dev. (ft)	Sep. Fact.	Controlling Rule	Reference Trajectory		Risk Level			Alert	Status
	Ct-Ct (ft)	MAS (ft)	EOU (ft)				MD (ft)	TVD (ft)	Alert	Minor	Major		
	4325.75	529.14	3972.66	3796.61	12.28	OSF1.50	18011.41	7875.00				MinPts	
Grande 4-65 20-19 4CH Plan #0 (Def Plan)													Pass
	3158.55	32.81	3157.57	3125.74	N/A	MAS = 10.00 (m)	0.00	0.00				Surface	
	3158.36	32.81	3157.35	3125.56	148563.66	MAS = 10.00 (m)	20.00	28.00				MinPt-O-SF	
	3158.32	32.81	3157.31	3125.51	172957.56	MAS = 10.00 (m)	28.00	28.00				WRP	
	3158.29	32.81	3156.26	3125.46	3010.61	MAS = 10.00 (m)	250.00	250.00				MinPts	
	3158.34	32.81	3156.11	3125.54	2515.65	MAS = 10.00 (m)	290.00	290.00				MINPT-O-EOU	
	4149.64	45.98	4118.66	4103.66	138.31	OSF1.50	7200.00	7114.03				MinPt-O-SF	
	5695.69	117.15	5617.26	5578.53	73.53	OSF1.50	11910.00	7875.00				MinPt-O-SF	
	10737.00	151.75	10635.51	10585.26	106.82	OSF1.50	18011.41	7875.00				TD	
Sunset 4-65 21-22 1H MWD 0' to 17391' - PR (Def Survey)													Pass
	8605.25	319.74	8391.49	8285.51	40.59	OSF1.50	0.00	0.00				Surface	
	8579.51	320.39	8365.32	8259.13	40.39	OSF1.50	28.00	28.00				WRP	
	3737.15	675.23	3286.46	3061.92	8.32	OSF1.50	8380.00	7875.00				MinPts	
	3737.16	675.25	3286.46	3061.92	8.32	OSF1.50	8390.00	7875.00				MinPt-O-ADP	
	3737.21	675.26	3286.50	3061.94	8.32	OSF1.50	8400.00	7875.00				MinPt-O-SF	
	3792.59	537.04	3434.02	3255.54	10.62	OSF1.50	10470.00	7875.00				MinPt-CtCt	
	3821.93	419.12	3541.99	3402.82	13.73	OSF1.50	12430.00	7875.00				MinPt-O-ADP	
	3821.65	418.74	3541.96	3402.92	13.74	OSF1.50	12440.00	7875.00				MINPT-O-EOU	
	3795.53	393.79	3532.47	3401.75	14.51	OSF1.50	13050.00	7875.00				MinPt-O-ADP	
	3795.38	393.57	3532.46	3401.80	14.52	OSF1.50	13060.00	7875.00				MINPT-O-EOU	
	3793.48	383.12	3537.53	3410.35	14.91	OSF1.50	13400.00	7875.00				MinPt-CtCt	
	3809.47	348.72	3576.46	3460.75	16.46	OSF1.50	14460.00	7875.00				MinPt-CtCt	
	3820.17	331.94	3598.34	3488.23	17.34	OSF1.50	15760.00	7875.00				MinPts	
	3818.71	330.16	3598.07	3488.56	17.43	OSF1.50	15900.00	7875.00				MinPt-O-ADP	
	3812.87	331.71	3591.20	3481.16	17.32	OSF1.50	16180.00	7875.00				MinPt-O-SF	
	3796.96	350.47	3562.76	3446.49	16.32	OSF1.50	17230.00	7875.00				MinPt-CtCt	
	3799.85	358.38	3560.40	3441.47	15.97	OSF1.50	17500.00	7875.00				MINPT-O-EOU	
	3800.58	363.66	3557.61	3436.92	15.74	OSF1.50	17690.00	7875.00				MinPt-CtCt	
	3803.23	372.60	3554.29	3430.62	15.37	OSF1.50	17970.00	7875.00				MINPT-O-EOU	
	3804.32	373.95	3554.48	3430.37	15.32	OSF1.50	18011.41	7875.00				MinPts	
Grimm Motocross 4-65 23-24 1H ST1 7232' to 17548' - PR (Def Survey)													Pass
	10062.91	32.81	10060.94	10030.10	65509.78	MAS = 10.00 (m)	0.00	0.00				MinPts	
	10062.91	32.81	10060.88	10030.10	46772.39	MAS = 10.00 (m)	28.00	28.00				WRP	
	10062.98	32.81	10059.80	10030.18	7356.62	MAS = 10.00 (m)	260.00	260.00				MINPT-O-EOU	
	10753.10	32.81	10732.88	10720.30	577.38	MAS = 10.00 (m)	4210.00	4162.53				MinPt-O-SF	
	10837.48	32.81	10816.12	10804.67	548.47	MAS = 10.00 (m)	4620.00	4567.21				MinPt-O-SF	
	11240.05	42.24	11211.36	11197.81	414.87	OSF1.50	6580.00	6501.73				MinPt-O-SF	
	11346.38	45.43	11315.56	11300.95	388.33	OSF1.50	7135.64	7050.15				MinPt-O-SF	
	11353.82	45.45	11322.98	11308.37	388.37	OSF1.50	7200.00	7114.03				MinPt-O-SF	
	3906.77	372.37	3657.68	3534.40	15.84	OSF1.50	18011.41	7875.00				MinPts	
Grimm Motocross 4-65 23-24 1H MWD 0' to 7959' - PR (Def Survey)													Pass
	10062.91	32.81	10060.94	10030.10	65509.78	MAS = 10.00 (m)	0.00	0.00				MinPts	
	10062.91	32.81	10060.88	10030.10	46772.39	MAS = 10.00 (m)	28.00	28.00				WRP	
	10062.98	32.81	10059.80	10030.18	7356.62	MAS = 10.00 (m)	260.00	260.00				MINPT-O-EOU	
	10753.10	32.81	10732.88	10720.30	577.38	MAS = 10.00 (m)	4210.00	4162.53				MinPt-O-SF	
	10837.48	32.81	10816.12	10804.67	548.47	MAS = 10.00 (m)	4620.00	4567.21				MinPt-O-SF	
	11240.05	42.24	11211.36	11197.81	414.87	OSF1.50	6580.00	6501.73				MinPt-O-SF	
	11346.38	45.43	11315.56	11300.95	388.33	OSF1.50	7135.64	7050.15				MinPt-O-SF	
	11353.82	45.45	11322.98	11308.37	388.36	OSF1.50	7200.00	7114.03				MinPt-O-SF	
	3925.99	371.60	3677.57	3554.38	15.93	OSF1.50	18011.41	7875.00				MinPts	