

**DCP O'Connor GAS PLANT CND SITE  
FORM 27 SUPPLEMENTAL SUMMARY REPORT  
(Doc # 402504711)**

**ATTACHMENTS**

**Tables**

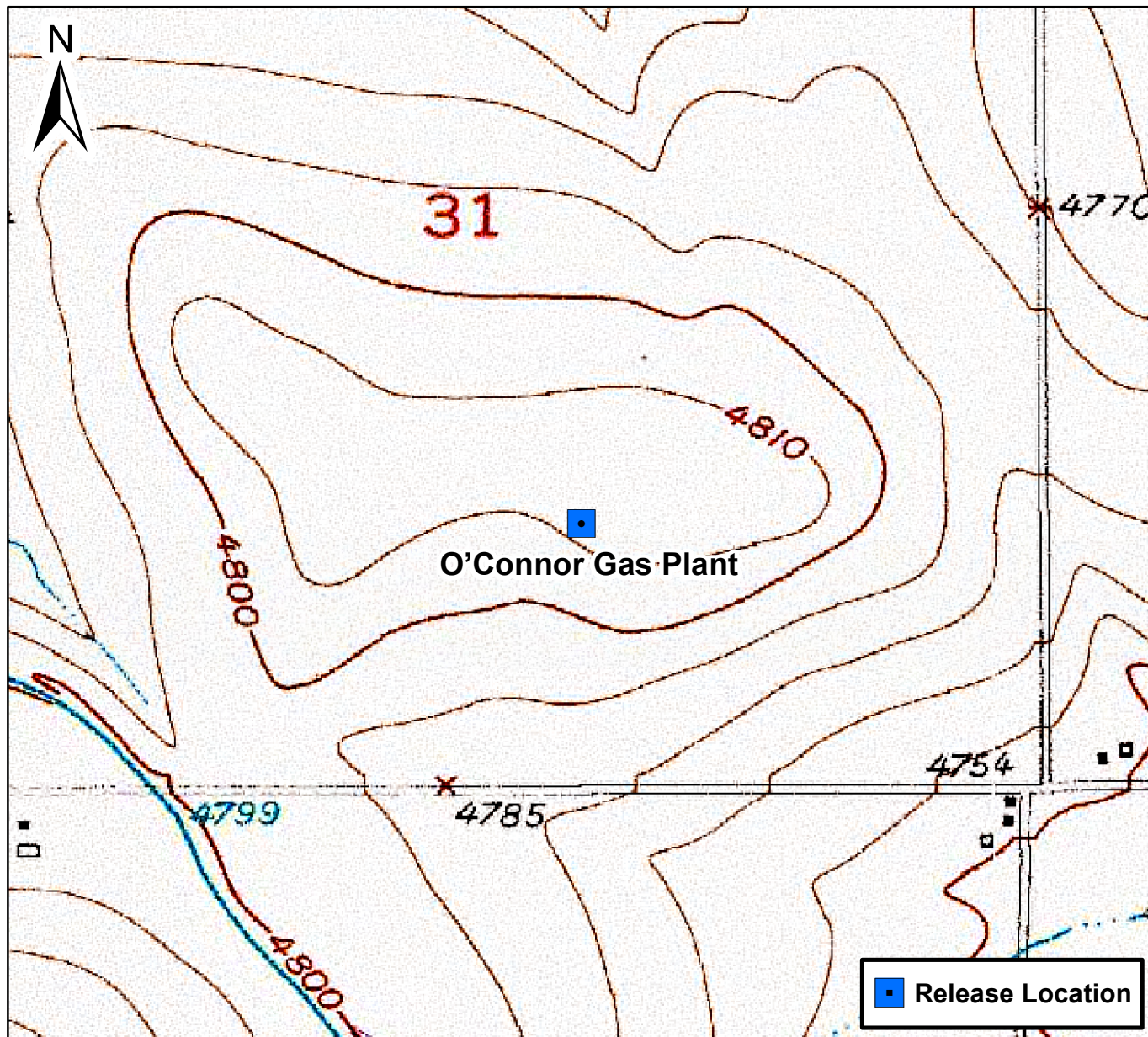
- |   |                                   |
|---|-----------------------------------|
| 1 | Summary of ISCO Injection Amounts |
|---|-----------------------------------|

**Figures**

- |   |  |
|---|--|
| 1 | Site Location Map  |
| 2 | Site Overview Map with Soil Sample and Injection Locations |

**TABLE 1**  
**DCP MIDSTREAM - O'CONNOR 1 CND GAS PLANT**  
**HYDROGEN PEROXIDE (18%) INJECTION SUMMARY TABLE**

<b>BH01 Area</b> (Target Interval 6' to 8' bgs)	<b>Approx. Gallons of H2O2</b> (Gravity Feed)	<b>Approx. Gallons of H2O2</b> (Gravity Feed)	<b>Notes / Comments</b>
<b>Injection Date</b>	<b>9/28/2020</b>	<b>9/29/2020</b>	
IP01 (2')	3	2	Hand Auger
IP02 (3')	3	2	Hand Auger
IP03 (3')	3	2	Hand Auger
IP04 (3')	6	4	Hydrovac
IP05 (4')	8	6	Hydrovac
IP06 (9')	18	10	Hydrovac/Hand Auger
IP07 (2')	1	2	Hand Auger
<b>BH06, 6A and 6B Area</b> (Target Interval 6' to 11' bgs)	<b>Approx. Gallons of H2O2</b> (Gravity Feed)	<b>Approx. Gallons of H2O2</b> (Gravity Feed)	<b>Notes / Comments</b>
<b>Injection Date</b>	<b>9/28/2020</b>	<b>9/29/2020</b>	
IP1 (11')	30	25	Hydrovac
IP2 (11')	30	20	Hydrovac
IP3 (6')	12	10	Hydrovac
IP4 (6')	12	10	Hydrovac
IP5 (4')	5	5	Hand Auger
IP6 (2')	2	2	Hand Auger
IP7 (4')	0	5	Hand Auger
<b>BH11 Area</b> (Target Interval 2' to 3' bgs)	<b>Approx. Gallons of H2O2</b> (Gravity Feed)	<b>Approx. Gallons of H2O2</b> (Gravity Feed)	<b>Notes / Comments</b>
<b>Injection Date</b>	<b>9/28/2020</b>	<b>9/29/2020</b>	
IP1 (3')	3	2	Hand Auger
IP2 (3')	3	2	Hand Auger
IP3 (3')	3	2	Hand Auger
<b>BH18B Area</b> (Target Interval 1' to 2' bgs)	<b>Approx. Gallons of H2O2</b> (Gravity Feed)	<b>Approx. Gallons of H2O2</b> (Gravity Feed)	<b>Notes / Comments</b>
<b>Injection Date</b>	<b>9/28/2020</b>	<b>9/29/2020</b>	
IP1 (2')	2	2	Hand Auger
IP2 (3')	3	2	Hand Auger
IP3 (2')	2	2	Hand Auger
IP4 (2')	2	2	Hand Auger
IP5 (2')	2	2	Hand Auger
<b>TOTAL GALLONS H2O2</b>	<b>153</b>	<b>121</b>	

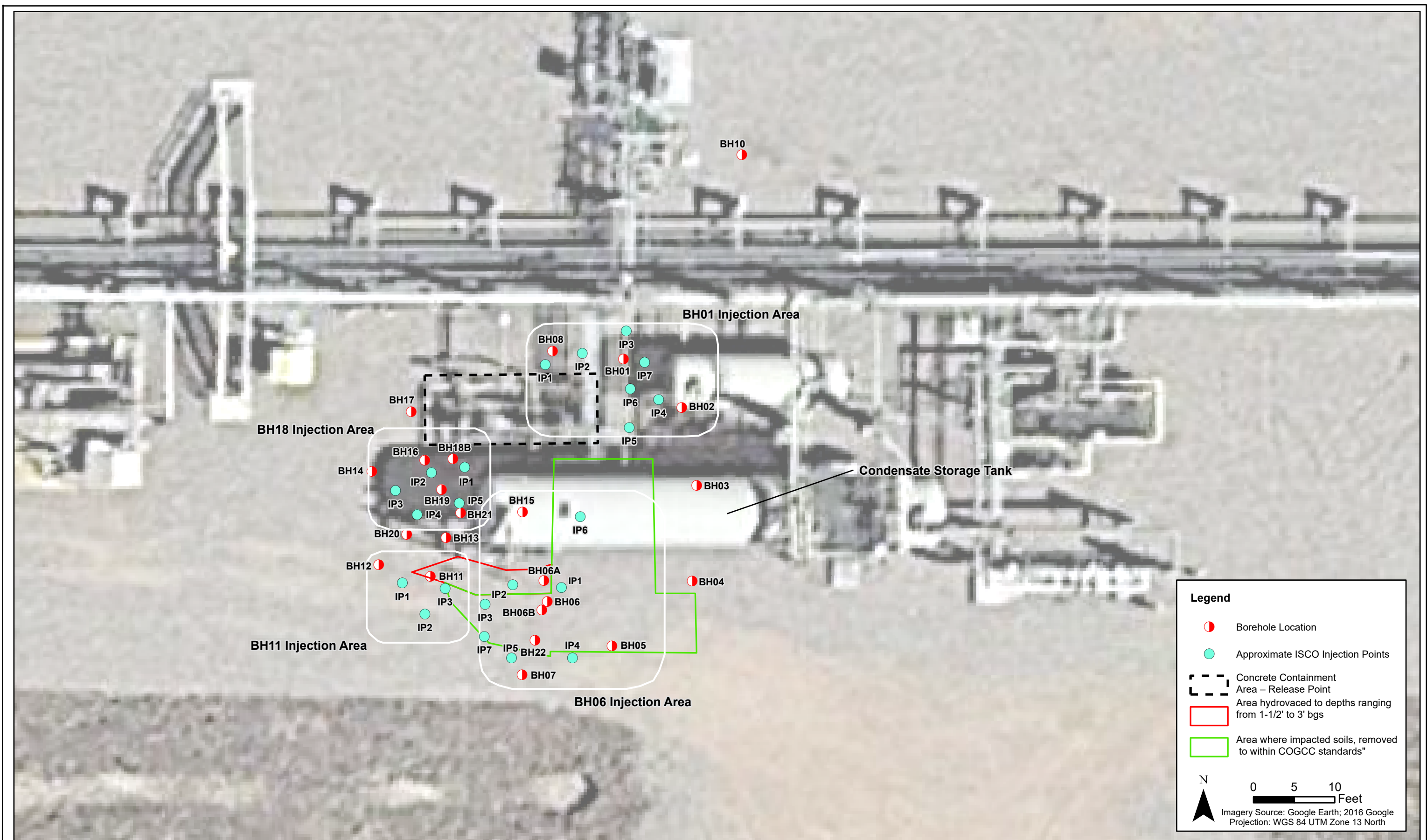


0 750 1,500 Feet

## Figure 1

Site Location Map  
O'Connor Gas Plant  
SWSE S31 T5N R64W  
Weld County, Colorado





DATE:  
October 2020

DESIGNED BY:  
B. Humphrey

DRAWN BY:  
A. Dahl

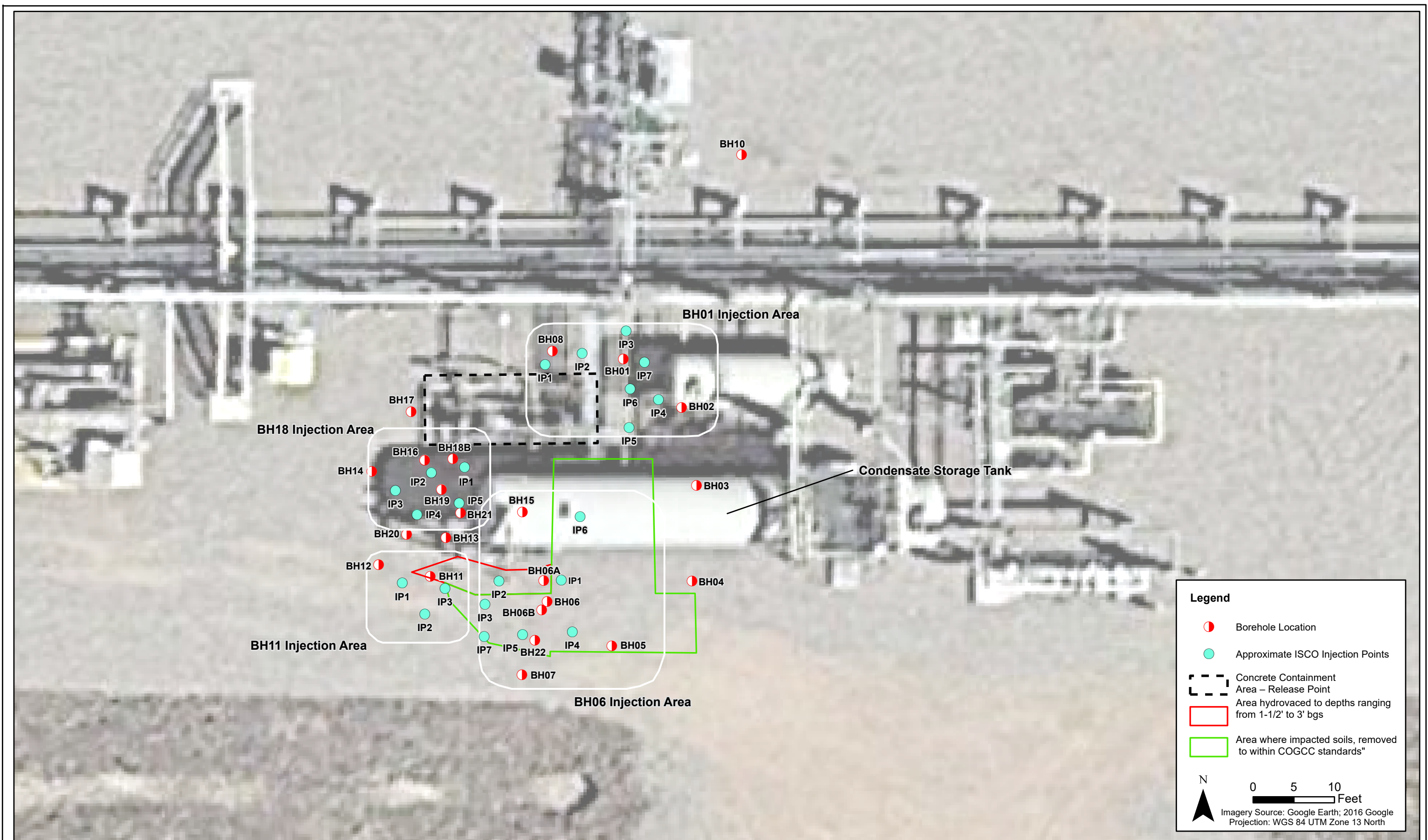


**DCP Midstream  
O'Connor Gas Plant**  
SWSE, Section 31, Township 5 North, Range 64 West  
Weld County, Colorado

Proposed Injection  
Locations

**Figure  
2**





DATE:  
October 2020

DESIGNED BY:  
B. Humphrey

DRAWN BY:  
A. Dahl



**DCP Midstream  
O'Connor Gas Plant**  
SWSE, Section 31, Township 5 North, Range 64 West  
Weld County, Colorado

Proposed Injection  
Locations

**Figure  
2**