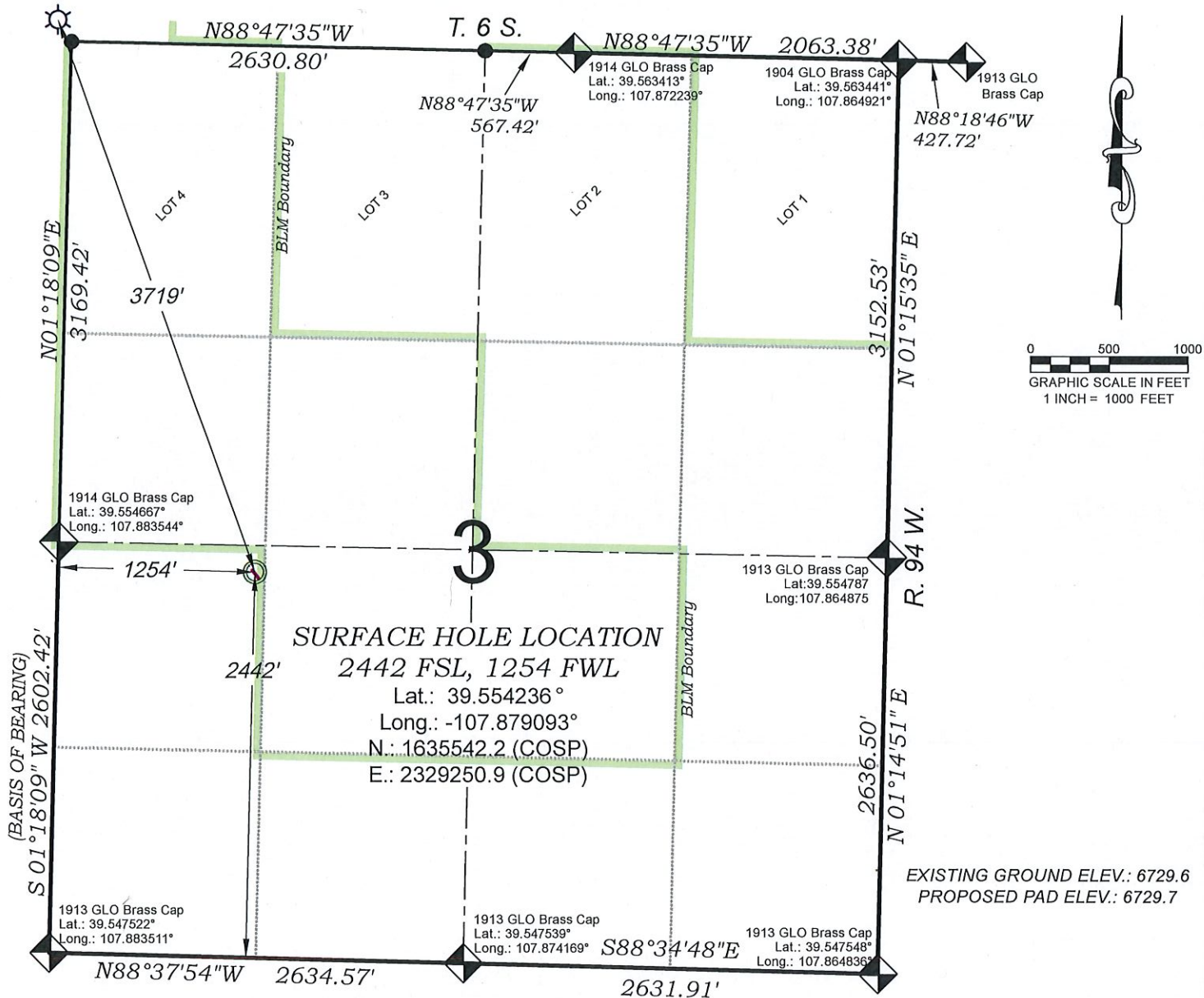


Federal NR 544-36



SURVEYORS STATEMENT

I, MICHAEL J. LANGHORNE, A REGISTERED LAND SURVEYOR IN THE STATE OF COLORADO DO HEREBY CERTIFY THAT THE SURVEY SHOWN HEREON WAS PREPARED UNDER MY DIRECT SUPERVISION AND HAS BEEN STAKED ON THE GROUND AS SHOWN ON THE PLAT AND CHECKING THAT THIS MAP IS A TRUE REPRESENTATION THEREOF.

Michael J. Langhorne

MICHAEL J. LANGHORNE, COLORADO REGISTRATION NO. 36572
 FOR AND ON BEHALF OF
 BOOKCLIFF SURVEY SERVICES, INC.

REFERENCES

- 1) Dependent Resurvey, T. 6 S., R. 94 W., 6th P.M (GLO PLAT)
- 2) U.S.G.S. QUAD: RIFLE, CO

REVISED: 9/15/20

SURVEY DATE: 7/23/20
 MAP DATE: 8/31/20
 SCALE: 1" = 1000'
 PLAT: 1 of 7
 PROJECT: TEP Valley

- LEGEND -

FIELD LOCATED SECTION MONUMENTS AS DESCRIBED

FIELD SURVEYED WELL LOCATION

CALCULATED TOP OF PRODUCTION ZONE / BOTTOM HOLE LOCATION

CALCULATED SECTION CORNER LOCATION

NOTES

- 1) ELEVATIONS BASED ON N.A.V.D. 1988 PUBLISHED COORDINATES.
- 2) LATITUDES AND LONGITUDES ARE BASE ON NAD 83, PUBLISHED COORDINATES
- 3) STATE PLANE COORDINATES ARE BASED ON COLORADO CENTRAL ZONE, U.S. SURVEY FEET.
- 4) ELEVATION MASK SET TO 15°
- 5) GPS OPERATOR J. KIRKPATRICK, OBSERVED A PDOP 2.9 ON SURVEY POINT NUMBER 19417.
- 6) SURFACE AND BOTTOM HOLE LOCATIONS ARE MEASURED 90° FROM SECTION LINES.

WELL LOCATION PLAT Prepared for:



TEP Rocky Mountain LLC

NW1/4 SW1/4, SECTION 3
 T. 6 S., R. 94 W. of the 6th P.M.
 GARFIELD COUNTY, COLORADO

136 East Third Street
 Rifle, Colorado
 81650 Ph. (970)
 625-2720 Fax (970)
 625-2773



BOOKCLIFF
 Survey Services, Inc.

T. 5 S.

TPZ/BOTTOM HOLE LOCATION

Federal NR 544-36

36

R. 94 W.

N 01°28'23" E 2640.44'

TPZ/BOTTOM HOLE LOCATION

136 FSL, 654 FEL

Lat.: 39.563742°

Long.: -107.883902°

N.: 1639039.1 (COSP)

E.: 2327986.4 (COSP)

N 88°47'35" W
564.30'1914 GLO Brass Cap
Lat.: 39.563413°
Long.: 107.872239°

N 88°33'23" W

2078.96'

N 88°47'35" W
2066.50'N 88°33'23" W
561.71'N 88°47'35" W
567.42'

LOT 2

LOT 1

N 01°18'09" E
3169.42'

R. 94 W.

3719'

LOT 4

BLM Boundary

LOT 3

LOT 2

1914 GLO Brass Cap
Lat.: 39.554667°
Long.: 107.883544°

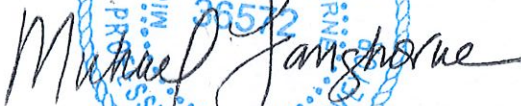
T. 6 S.

3

EXISTING GROUND ELEV.: 6729.6
PROPOSED PAD ELEV.: 6729.7

SURVEYORS STATEMENT

I, MICHAEL J. LANGHORNE, A REGISTERED LAND SURVEYOR IN THE STATE OF COLORADO DO HEREBY CERTIFY THAT THE SURVEY SHOWN HEREON WAS PREPARED UNDER MY DIRECT SUPERVISION AND HAS BEEN STAKED ON THE GROUND AS SHOWN ON THE PLAT AND CHECKING THAT THIS MAP IS A TRUE REPRESENTATION THEREOF.



MICHAEL J. LANGHORNE, COLORADO REGISTRATION NO. 36572
FOR AND ON BEHALF OF
BOOKCLIFF SURVEY SERVICES, INC.

REFERENCES

- 1) Dependent Resurvey, T. 6 S., R. 94 W., 6th P.M (GLO PLAT)
- 2) Dependent Resurvey, T. 5 S., R. 94 W., 6th P.M (GLO PLAT)
- 3) U.S.G.S. QUAD: RIFLE, CO

REVISED: 9/9/20

136 East Third Street
Rifle, Colorado
81650 Ph. (970)
625-2720 Fax (970)
625-2773



BOOKCLIFF
Survey Services, Inc.

SURVEY DATE: 7/23/20
MAP DATE: 8/31/20
SCALE: 1" = 1000'
PLAT: 1A of 7
PROJECT: TEP Valley

- LEGEND -
FIELD LOCATED SECTION
MONUMENTS AS DESCRIBED

FIELD SURVEYED
WELL LOCATION

CALCULATED TOP OF PRODUCTION ZONE
/BOTTOM HOLE LOCATION

CALCULATED SECTION
CORNER LOCATION

NOTES

- 1) ELEVATIONS BASED ON N.A.V.D. 1988 PUBLISHED COORDINATES.
- 2) LATITUDES AND LONGITUDES ARE BASE ON NAD 83, PUBLISHED COORDINATES
- 3) STATE PLANE COORDINATES ARE BASED ON COLORADO CENTRAL ZONE, U.S. SURVEY FEET.
- 4) ELEVATION MASK SET TO 15°
- 5) GPS OPERATOR J. KIRKPATRICK, OBSERVED A PDOP 2.9 ON SURVEY POINT NUMBER 19417.
- 6) SURFACE AND BOTTOM HOLE LOCATIONS ARE MEASURED 90° FROM SECTION LINES.

WELL LOCATION PLAT Prepared for:

TERRA
ENERGY PARTNERS

TEP Rocky Mountain LLC

NW1/4 SW1/4, SECTION 3
T. 6 S., R. 94 W. of the 6th. P.M.
GARFIELD COUNTY, COLORADO

0 500 1000
GRAPHIC SCALE IN FEET
1 INCH = 1000 FEET

