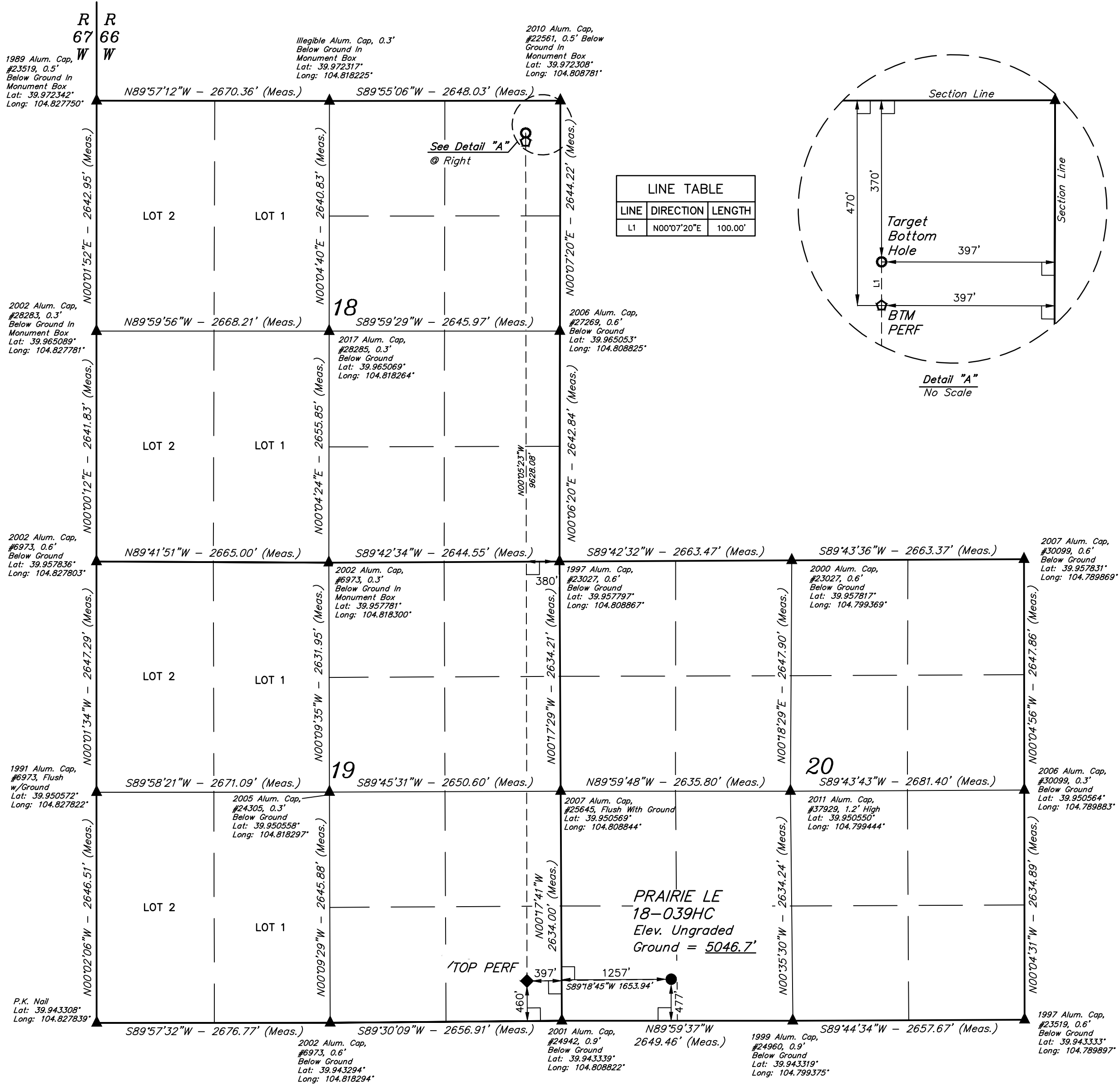


LEGEND:

- = 90° SYMBOL
● = PROPOSED WELLHEAD.
◆ = ENTRY POINT/TOP PERF
○ = BTM PERF
○ = TARGET BOTTOM HOLE.
▲ = SECTION CORNERS LOCATED. (NAD 83)
△ = SECTION CORNERS RE-ESTABLISHED. (Not Set on Ground.) (NAD 83)

T1S, R66W, 6th P.M.



NAD 83 (SURFACE LOCATION)	NAD 83 (ENTRY POINT/TOP PERF)	NAD 83 (BTM PERF)	NAD 83 (TARGET BOTTOM HOLE)
LATITUDE = 39°56'40.70" (39.944638)	LATITUDE = 39°56'40.55" (39.944596)	LATITUDE = 39°58'15.67" (39.971020)	LATITUDE = 39°58'16.66" (39.971294)
LONGITUDE = 104°48'15.64" (104.804344)	LONGITUDE = 104°48'36.87" (104.810241)	LONGITUDE = 104°48'36.74" (104.810205)	LONGITUDE = 104°48'36.73" (104.810203)
NAD 27 (SURFACE LOCATION)	NAD 27 (ENTRY POINT/TOP PERF)	NAD 27 (BTM PERF)	NAD 27 (TARGET BOTTOM HOLE)
LATITUDE = 39°56'40.75" (39.944654)	LATITUDE = 39°56'40.60" (39.944611)	LATITUDE = 39°58'15.73" (39.971036)	LATITUDE = 39°58'16.72" (39.971310)
LONGITUDE = 104°48'13.74" (104.803816)	LONGITUDE = 104°48'34.97" (104.809713)	LONGITUDE = 104°48'34.84" (104.809677)	LONGITUDE = 104°48'34.83" (104.809675)

BASIS OF BEARINGS
BASIS OF BEARINGS IS A G.P.S. OBSERVATION

BASIS OF ELEVATION
USGS COOPERATIVE BASE NETWORK CONTROL STATION,
DESIGNATION "JR 53 5026", NGS DATA SHEET LISTS THE NAVD 88
ELEVATION AS BEING 5028 FEET.

UELS, LLC
Corporate Office * 85 South 200 East
Vernal, UT 84078 * (435) 789-1017



CERTIFICATE OF REGISTRATION
THIS IS TO CERTIFY THAT THE ABOVE SURVEY WAS PREPARED AND FIELD
NOTES OF ACTUAL SURVEYS MADE AND REDUCED UNDER MY SUPERVISION
AND THAT THE SAME ARE TRUE AND CORRECT TO THE BEST OF MY
KNOWLEDGE AND BELIEF.

REGISTERED LAND SURVEYOR
REGISTRATION NO. 28285
STATE OF COLORADO
JARED CHRISTOPHER

REV: 3 08-07-20 K.B. (CORRECT 1/4 IN TITLE BLOCK)

GREAT WESTERN OPERATING COMPANY

PRAIRIE LE 18-039HC
SW 1/4 SW 1/4, SECTION 20, T1S, R66W, 6th P.M.
ADAMS COUNTY, COLORADO

SURVEYED BY	JARED CHRISTOPHER	09-21-18	SCALE
DRAWN BY	B.L.B.	09-21-18	1" = 1000'

WELL LOCATION PLAT