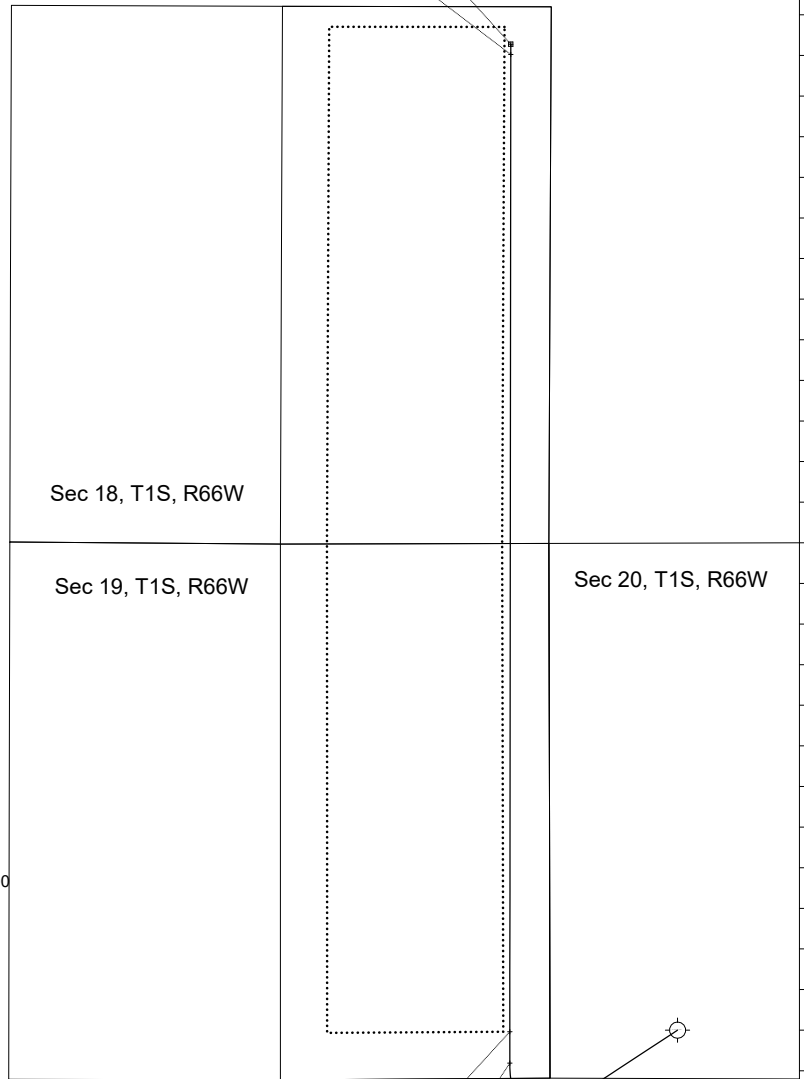
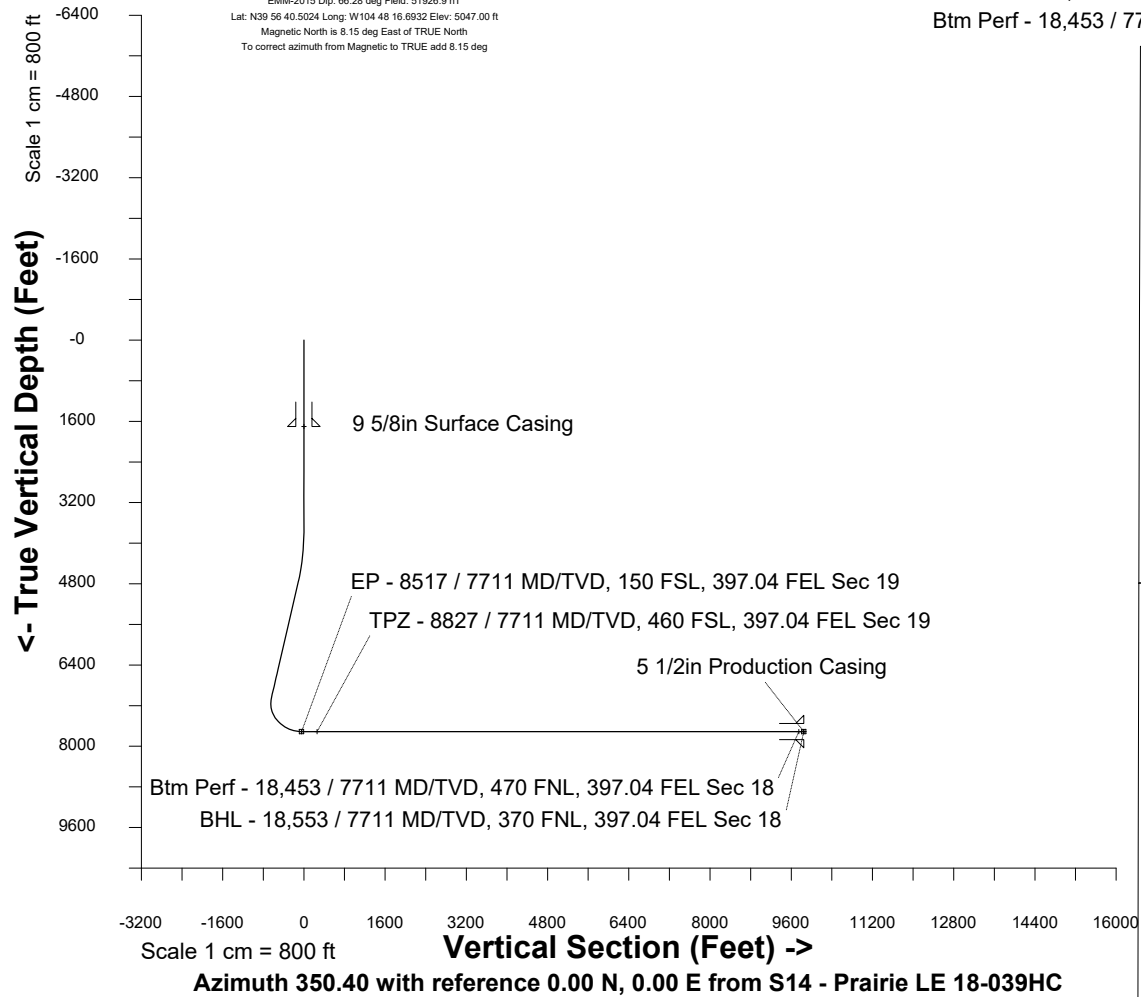


Nov-6-2018
EMM-2015 Dip: 66.28 deg Field: 51926.9 nT
Lat: N39 56 40.5024 Long: W104 48 16.6932 Elev: 5047.00 ft
Magnetic North is 8.15 deg East of TRUE North
To correct azimuth from Magnetic to TRUE add 8.15 deg

Great Western Operating Company, LLC

Location	Colorado	Slot	S14 - Prairie LE 18-039HC
Field	Wattenburg	Well	Prairie LE 18-039HC
Installation	Prairie	Wellbore	S14 - Prairie LE 18-039HC (PWB)

Created by	mmount
Date plotted	20-Dec-2019
Plot reference is S14 - Prairie LE 18-039HC (PWB).	
Ref wellpath is S14 - Prairie LE 18-039HC (PWP#1).	
Coordinates are in Feet reference S14 - Prairie LE 18-039HC.	
True Vertical Depths are reference Rig Datum.	
Measured Depths are reference Rig Datum.	
Rig Datum: Planned Datum #1	
Rig Datum to Mean Sea Level: 5067.00 ft.	
Plot North is aligned to TRUE North.	



WELL PROFILE DATA

Point	MD	Inc	Azi	TVD	North	East	deg/100ft	
Tie on	0.00	0.00	0.00	0.00	S 0.00	W 0.00		
KOP	3774.00	0.00	236.73	3774.00	S 0.00	W 0.00	0.00	
Target EP - 8...Sec 19	8517.25	90.00	0.06	7711.00	S 325.25	W 1652.64	10.00	
Target TPZ - 8.Sec 19	8827.25	90.00	0.06	7711.00	S 15.25	W 1652.64	0.00	
Target BTM PERF.. 18	18452.91	90.00	0.06	7711.00	N 9610.40	W 1642.16	0.00	
T.D. & Target BHL... 18	18552.91	90.00	0.06	7711.00	N 9710.40	W 1642.16	0.00	

TPZ - 8827 / 7711 MD/TVD, 460 FSL, 397.04 FEL Sec 19
EP - 8517 / 7711 MD/TVD, 150 FSL, 397.04 FEL Sec 19