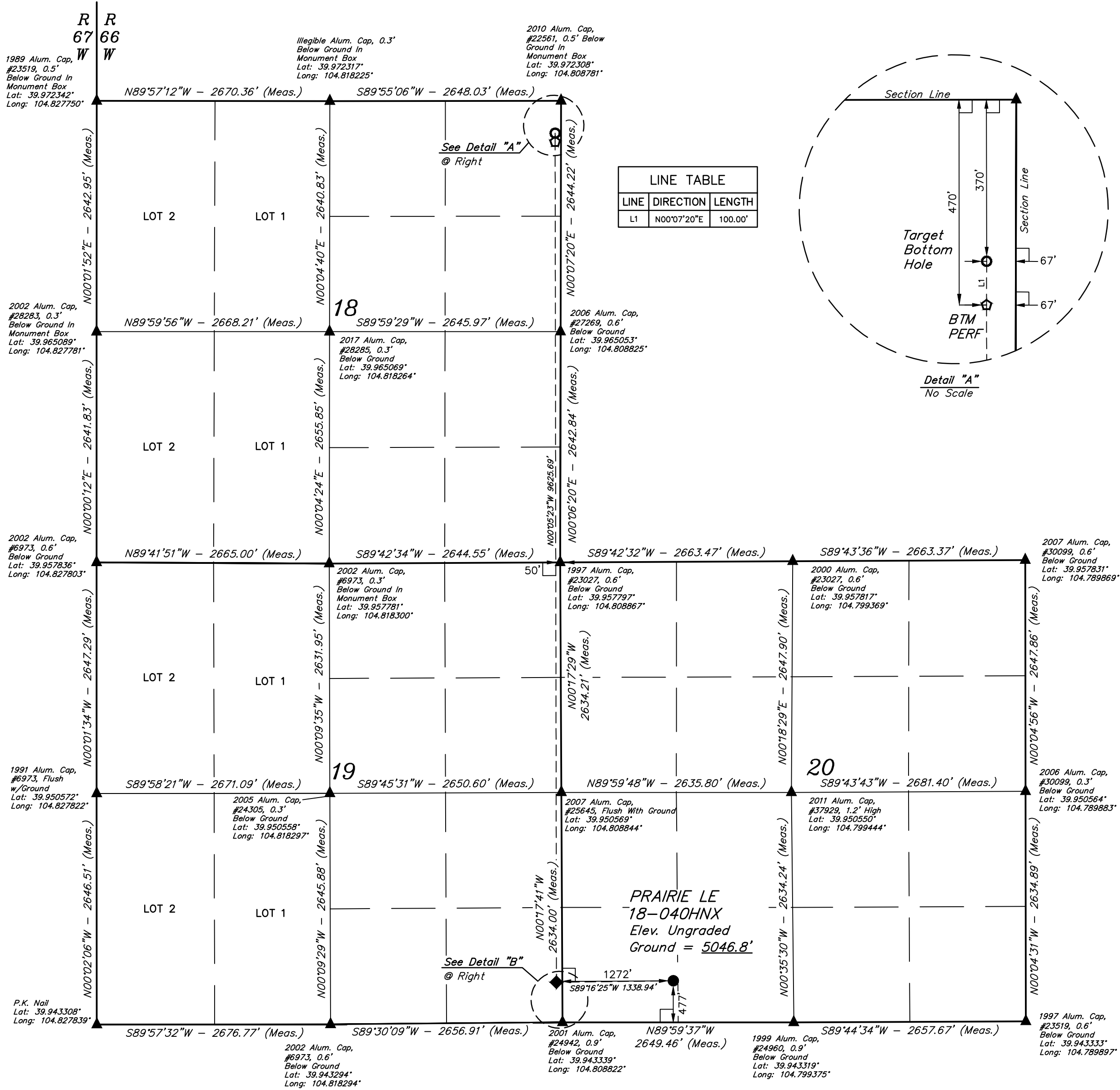


LEGEND:

- = 90° SYMBOL
● = PROPOSED WELLHEAD.
◆ = ENTRY POINT/TOP PERF
○ = BTM PERF
○ = TARGET BOTTOM HOLE.
▲ = SECTION CORNERS LOCATED. (NAD 83)
△ = SECTION CORNERS RE-ESTABLISHED. (Not Set on Ground.) (NAD 83)

T1S, R66W, 6th P.M.



NAD 83 (SURFACE LOCATION)	NAD 83 (ENTRY POINT/TOP PERF)	NAD 83 (BTM PERF)	NAD 83 (TARGET BOTTOM HOLE)
LATITUDE = 39°56'40.70" (39.944638)	LATITUDE = 39°56'40.57" (39.944601)	LATITUDE = 39°58'15.67" (39.971019)	LATITUDE = 39°58'16.66" (39.971293)
LONGITUDE = 104°48'15.45" (104.804290)	LONGITUDE = 104°48'32.63" (104.809064)	LONGITUDE = 104°48'32.50" (104.809027)	LONGITUDE = 104°48'32.49" (104.809026)
NAD 27 (SURFACE LOCATION)	NAD 27 (ENTRY POINT/TOP PERF)	NAD 27 (BTM PERF)	NAD 27 (TARGET BOTTOM HOLE)
LATITUDE = 39°56'40.75" (39.944654)	LATITUDE = 39°56'40.62" (39.944617)	LATITUDE = 39°58'15.72" (39.971035)	LATITUDE = 39°58'16.71" (39.971309)
LONGITUDE = 104°48'13.55" (104.803763)	LONGITUDE = 104°48'30.73" (104.808536)	LONGITUDE = 104°48'30.60" (104.808500)	LONGITUDE = 104°48'30.59" (104.808498)

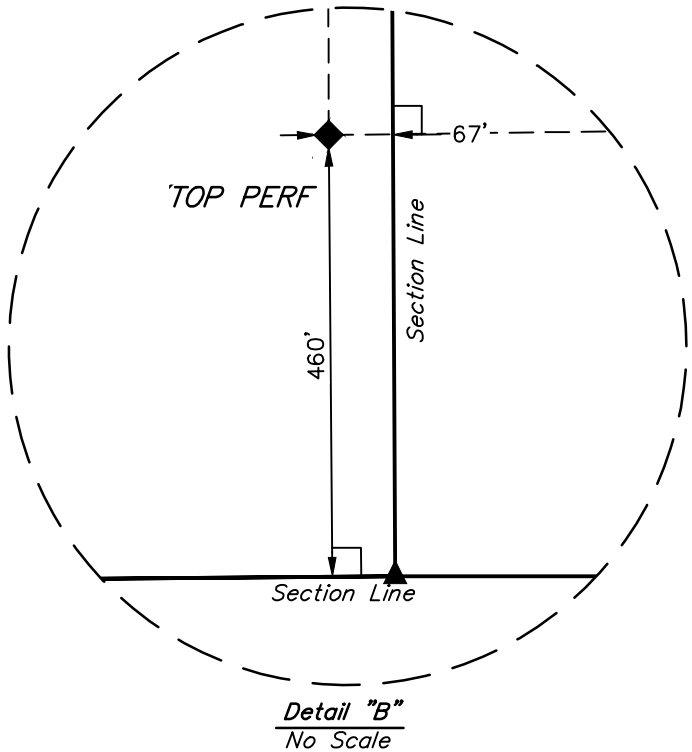
BASIS OF BEARINGS

BASIS OF ELEVATION

USGS COOPERATIVE BASE NETWORK CONTROL STATION, DESIGNATION "JR 53 5026", NGS DATA SHEET LISTS THE NAVD 88 ELEVATION AS BEING 5028 FEET.

UELS, LLC

Corporate Office * 85 South 200 East
Vernal, UT 84078 * (435) 789-1017



CERTIFICATE OF RECORDING
THIS IS TO CERTIFY THAT THE ABOVE PLAT WAS PREPARED AND PLOTTED
NOTES OF ACTUAL SURVEYS MADE AND UNDER MY SUPERVISION
AND THAT THE SAME ARE TRUE AND CORRECT TO THE BEST OF MY
KNOWLEDGE AND BELIEF.
RECORDED LAND SURVEYOR
REGISTRATION NO. 28285
STATE OF UTAH
JARED CHRISTOPHER

REV: 3 08-07-20 K.B. (CORRECT 1/4 IN TITLE BLOCK)

GREAT WESTERN OPERATING COMPANY

PRAIRIE LE 18-040HNX
SW 1/4 SW 1/4, SECTION 20, T1S, R66W, 6th P.M.
ADAMS COUNTY, COLORADO

SURVEYED BY	JARED CHRISTOPHER	09-21-18	SCALE
DRAWN BY	B.L.B.	09-21-18	1" = 1000'

WELL LOCATION PLAT