

9/2/2020

Via [COGCC Form 2 e-forms]

Colorado Oil and Gas Conservation Commission
1120 Lincoln Street, Suite 801
Denver, Colorado 80203

In re: COGCC Rule 318A.e.: Proposed Spacing Unit
Prairie LE Pad: SWSW Section 20, Township 1 South, Range 66 West
Proposed Well: Prairie LE 17-021HN, Doc #402391694; Prairie LE 17-022HN, Doc
#402391695
Adams County, Colorado

Dear Director:

Great Western Operating Company, LLC is planning to drill the above captioned wells in accordance with the provisions of COGCC Rule 318A.e. Great Western proposed wellbore spacing unit consists of:

Township 1 South, Range 66 West

Sec 17: W2W2; Sec 20: W2W2; Sec 18: E2E2; Sec 19: E2E2

Containing 640 acres, more or less for the Niobrara and Codell formations

Great Western is not the only owner within the proposed spacing unit, and as such provided notice to the remaining owner(s) within said proposed spacing unit as required under COGCC Rule 318A.e(6). The required thirty (30) day notice period has elapsed absent the receipt by Great Western of an objection to said proposal by the owner(s) within the Proposed Spacing Unit for the subject well.

Enclosed is a copy of the map illustrating the proposed wellbore spacing unit to assist you in your review of the Application for Permit to Drill for the Prairie LE Pad Wells.

Great Western requests that the COGCC review the enclosed information and approve the Application for Permit to Drill for the captioned wells. Thank you for your time and attention to this matter.

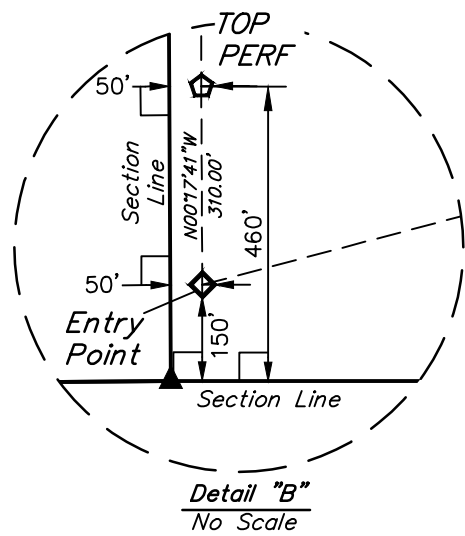
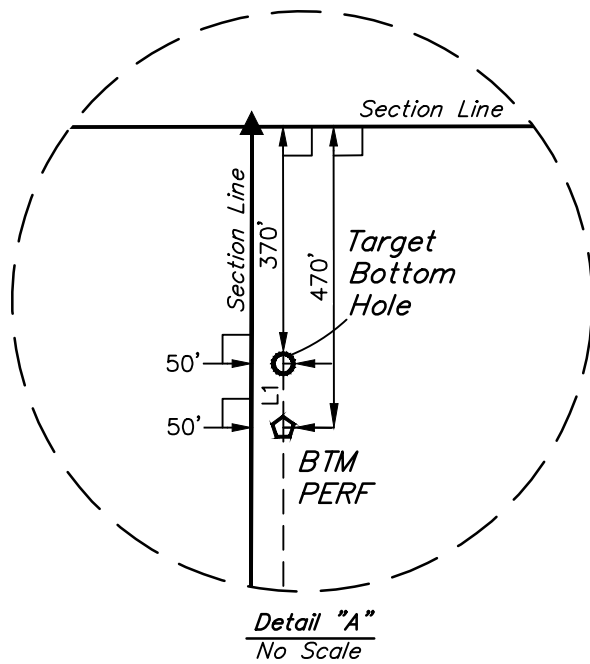
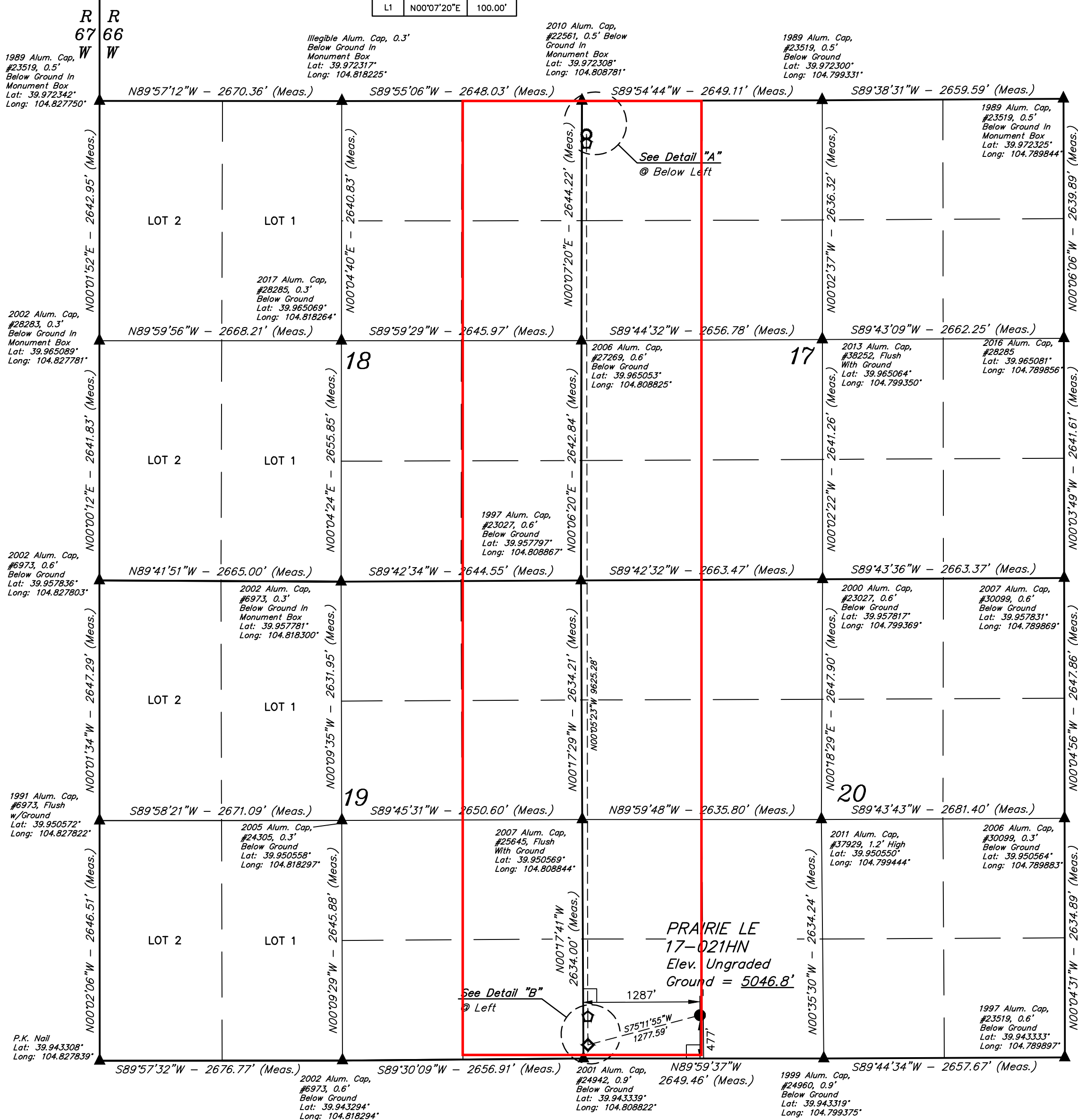
Respectfully,

GREAT WESTERN OPERATING COMPANY, LLC

Linsey Jones
Regulatory Analyst

 = 90° SYMBOL
 = PROPOSED WELLHEAD.
 = ENTRY POINT.
 = ENTRY POINT/TOP PERF
 = PERF. POINT
 = TARGET BOTTOM HOLE.
 = SECTION CORNERS LOCATED. (NAD 83)

LINE TABLE		
LINE	DIRECTION	LENGTH
L1	N00°07'20"E	100.00'



PDOP = 1.8

NAD 83 (SURFACE LOCATION)
LATITUDE = 39°56'40.70" (39.944638)
LONGITUDE = 104°48'15.25" (104.804237)
NAD 27 (SURFACE LOCATION)
LATITUDE = 39°56'40.75" (39.944654)
LONGITUDE = 104°48'13.35" (104.803709)
NAD 83 (ENTRY POINT)
LATITUDE = 39°56'37.51" (39.943751)
LONGITUDE = 104°48'31.12" (104.808644)
NAD 27 (ENTRY POINT)
LATITUDE = 39°56'37.56" (39.943767)
LONGITUDE = 104°48'29.22" (104.808116)
NAD 83 (TOP PERF)
LATITUDE = 39°56'40.57" (39.944602)
LONGITUDE = 104°48'31.13" (104.808647)
NAD 27 (TOP PERF)
LATITUDE = 39°56'40.62" (39.944618)
LONGITUDE = 104°48'29.23" (104.808119)
NAD 83 (BTM PERF)
LATITUDE = 39°58'15.67" (39.971018)
LONGITUDE = 104°48'31.00" (104.808610)
NAD 27 (BTM PERF)
LATITUDE = 39°58'15.72" (39.971034)
LONGITUDE = 104°48'29.10" (104.808082)
NAD 83 (TARGET BOTTOM HOLE)
LATITUDE = 39°58'16.65" (39.971293)
LONGITUDE = 104°48'30.99" (104.808608)
NAD 27 (TARGET BOTTOM HOLE)
LATITUDE = 39°58'16.71" (39.971309)
LONGITUDE = 104°48'29.09" (104.808080)



BASIS OF BEARINGS

BASIS OF BEARINGS IS A G.P.S. OBSERVATION

USGS COOPERATIVE BASE NETWORK CONTROL STATION,
DESIGNATION "JR 53 5026". NGS DATA SHEET LISTS THE NAVD 88
ELEVATION AS BEING 5028 FEET.

UELS, LLC
Corporate Office * 85 South 200 East
Vernal, UT 84078 * (435) 789-1017



CERTIFICATE

THIS IS TO CERTIFY THAT THE ABOVE MAP WAS PREPARED FROM THE
NOTES OF ACTUAL SURVEYS MADE BY ME OR UNDER MY SUPERVISION
AND THAT THE SAME ARE TRUE AND CORRECT TO THE BEST OF MY
KNOWLEDGE AND BELIEF.

REGISTERED LAND SURVEYOR
REGISTRATION NO. 28285
STATE OF COLORADO
08-07-20

REV: 1 08-07-20 K.B. (CORRECT 1/4 IN TITLE BLOCK)

GREAT WESTERN OPERATING COMPANY

PRAIRIE LE 17-021HN
SW 1/4 SW 1/4, SECTION 20, T1S, R66W, 6th P.M.
ADAMS COUNTY, COLORADO

SURVEYED BY	JARED CHRISTOPHER	09-21-18	SCALE
DRAWN BY	Z.T.	07-26-19	1" = 1000'

EXHIBIT