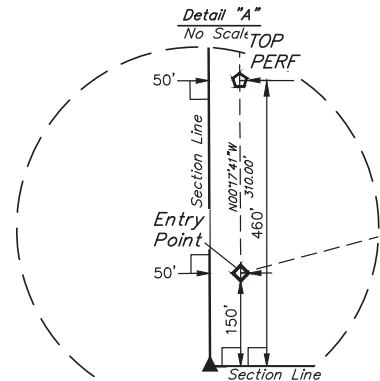
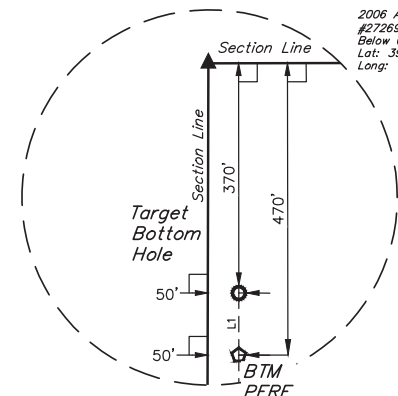


LEGEND:

- 90° SYMBOL
- PROPOSED WELLHEAD.
- ◆ ENTRY POINT.
- ◆ ENTRY POINT/TOP PERF
- PERF. POINT
- TARGET BOTTOM HOLE.
- ▲ SECTION CORNERS LOCATED. (NAD 83)
- △ SECTION CORNERS RE-ESTABLISHED. (Not Set on Ground.) (NAD 83)

LINE TABLE		
LINE	DIRECTION	LENGTH
L1	N00°07'20"E	100.00'



Detail "B"
No Scale

PDOP = 1.8

NAD 83 (SURFACE LOCATION)	
LATITUDE = 39°56'40.70" (39.944638)	
LONGITUDE = 104°48'15.25" (104.804237)	
NAD 27 (SURFACE LOCATION)	
LATITUDE = 39°56'40.75" (39.944654)	
LONGITUDE = 104°48'13.35" (104.803709)	
NAD 83 (ENTRY POINT)	
LATITUDE = 39°56'37.51" (39.943751)	
LONGITUDE = 104°48'31.12" (104.808644)	
NAD 27 (ENTRY POINT)	
LATITUDE = 39°56'37.56" (39.943767)	
LONGITUDE = 104°48'29.22" (104.808116)	
NAD 83 (TOP PERF)	
LATITUDE = 39°56'40.57" (39.944602)	
LONGITUDE = 104°48'31.13" (104.808647)	
NAD 27 (TOP PERF)	
LATITUDE = 39°56'40.62" (39.944618)	
LONGITUDE = 104°48'29.23" (104.808119)	
NAD 83 (BTM PERF)	
LATITUDE = 39°58'15.67" (39.971018)	
LONGITUDE = 104°48'31.00" (104.808610)	
NAD 27 (BTM PERF)	
LATITUDE = 39°58'15.72" (39.971034)	
LONGITUDE = 104°48'29.10" (104.808082)	
NAD 83 (TARGET BOTTOM HOLE)	
LATITUDE = 39°58'16.65" (39.971293)	
LONGITUDE = 104°48'30.99" (104.808608)	
NAD 27 (TARGET BOTTOM HOLE)	
LATITUDE = 39°58'16.71" (39.971309)	
LONGITUDE = 104°48'29.09" (104.808080)	

BASIS OF BEARINGS

BASIS OF BEARINGS IS A G.P.S. OBSERVATION

BASIS OF ELEVATION

USGS COOPERATIVE BASE NETWORK CONTROL STATION, DESIGNATION "JR 53 5026". NGS DATA SHEET LISTS THE NAVD 88 ELEVATION AS BEING 5028 FEET.



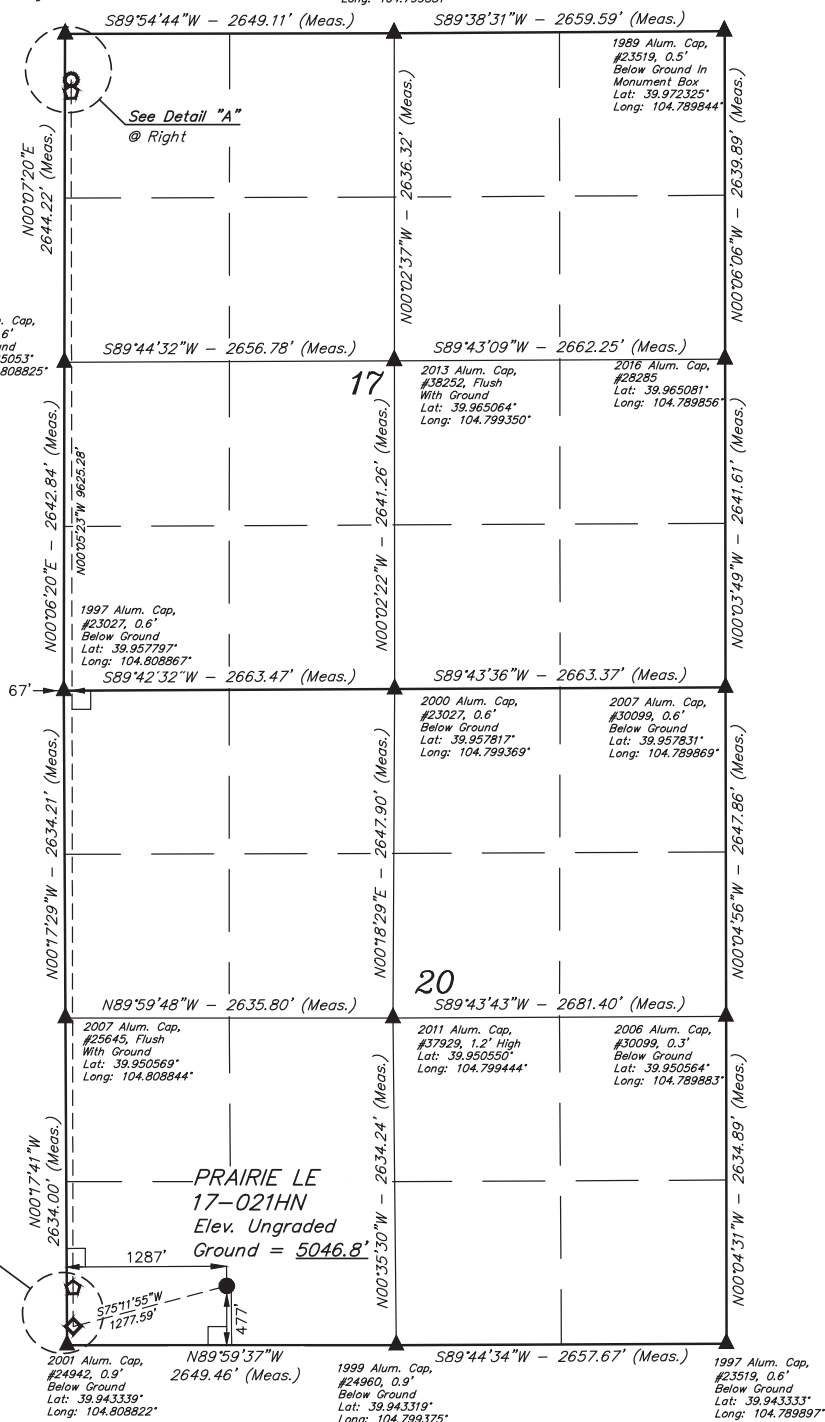
UELS, LLC
Corporate Office * 85 South 200 East
Vernal, UT 84078 * (435) 789-1017



2010 Alum. Cap.
#22581, 0.5' Below
Ground In
Monument Box
Lat: 39.972308°
Long: 104.808781°

1989 Alum. Cap.
#23519, 0.5' Below
Ground In
Monument Box
Lat: 39.972300°
Long: 104.799331°

T1S, R66W, 6th P.M.



CERTIFICATE OF RECORD
THIS IS TO CERTIFY THAT THE ABOVE SURVEY WAS PREPARED FROM FIELD NOTES OF ACTUAL SURVEYS MADE BY ME OR UNDER MY SUPERVISION AND THAT THE SAME ARE TRUE AND CORRECT TO THE BEST OF MY KNOWLEDGE AND BELIEF.



REV: 2 08-07-20 K.B. (CORRECT 1/4 IN TITLE BLOCK)

GREAT WESTERN OPERATING COMPANY

PRAIRIE LE 17-021HN
SW 1/4 SW 1/4, SECTION 20, T1S, R66W, 6th P.M.
ADAMS COUNTY, COLORADO

SURVEYED BY	JARED CHRISTOPHER	09-21-18	SCALE
DRAWN BY	B.L.B.	09-21-18	1" = 1000'

WELL LOCATION PLAT