

Nov-6-2018  
EMM-2015 Dip: 66.28 deg Field: 51926.9 nT  
Lat: N39 56 40.5024 Long: W104 48 16.6932 Elev: 5047.00 ft  
Magnetic North is 8.15 deg East of TRUE North  
To correct azimuth from Magnetic to TRUE add 8.15 deg

# Great Western Operating Company, LLC

Location	Colorado	Slot	S16 - Prairie LE 17-021HN
Field	Wattenburg	Well	Prairie LE 17-021HN
Installation	Prairie	Wellbore	S16 - Prairie LE 17-021HN (PWB)

Scale 1 cm = 400 ft

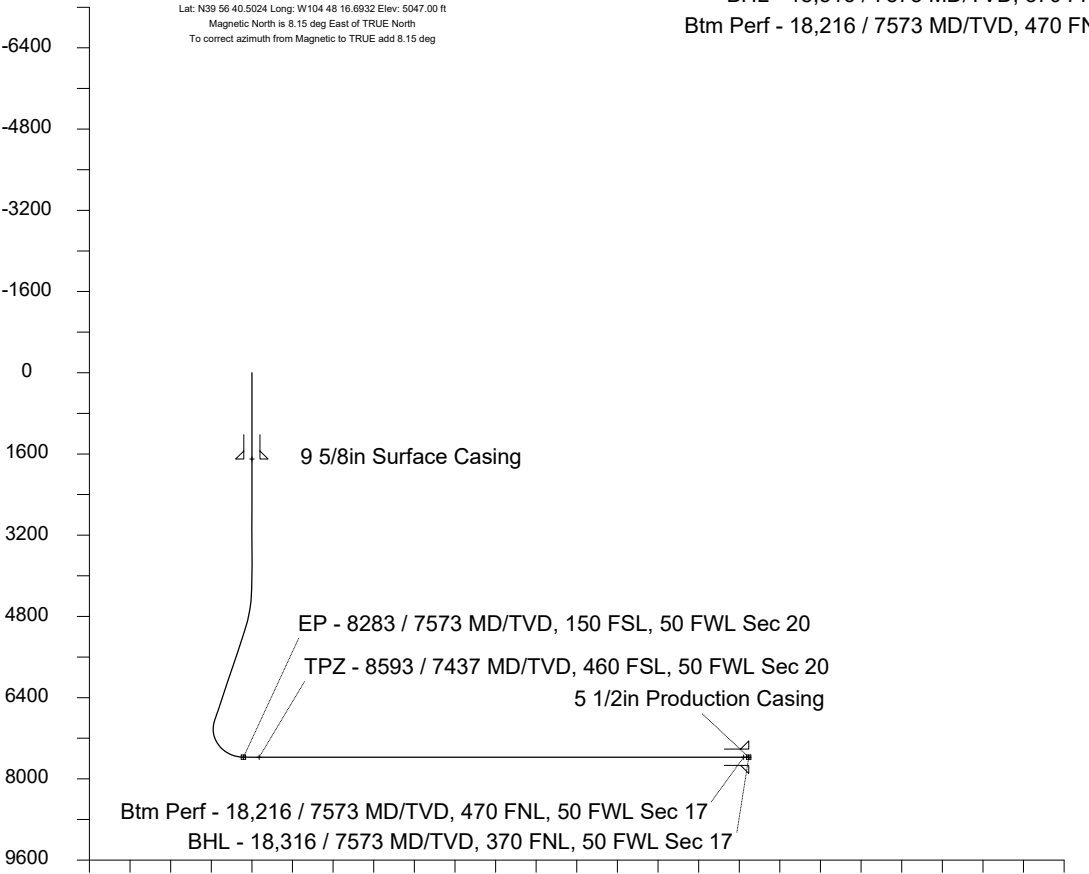
East (Feet) ->

Created by	mmount
Date plotted	20-Dec-2019
Plot reference is S16 - Prairie LE 17-021HN (PWB).	
Ref wellpath is S16 - Prairie LE 17-021HN (PWP#1).	
Coordinates are in Feet reference S16 - Prairie LE 17-021HN.	
True Vertical Depths are reference Rig Datum.	
Measured Depths are reference Rig Datum.	
Rig Datum: Planned Datum #1	
Rig Datum to Mean Sea Level: 5067.00 ft.	
Plot North is aligned to TRUE North.	

-7200 -6400 -5600 -4800 -4000 -3200 -2400 -1600 -800 0 800 1600 2400 3200 4000

<- True Vertical Depth (Feet)

Scale 1 cm = 800 ft



Scale 1 cm = 800 ft

Vertical Section (Feet) ->

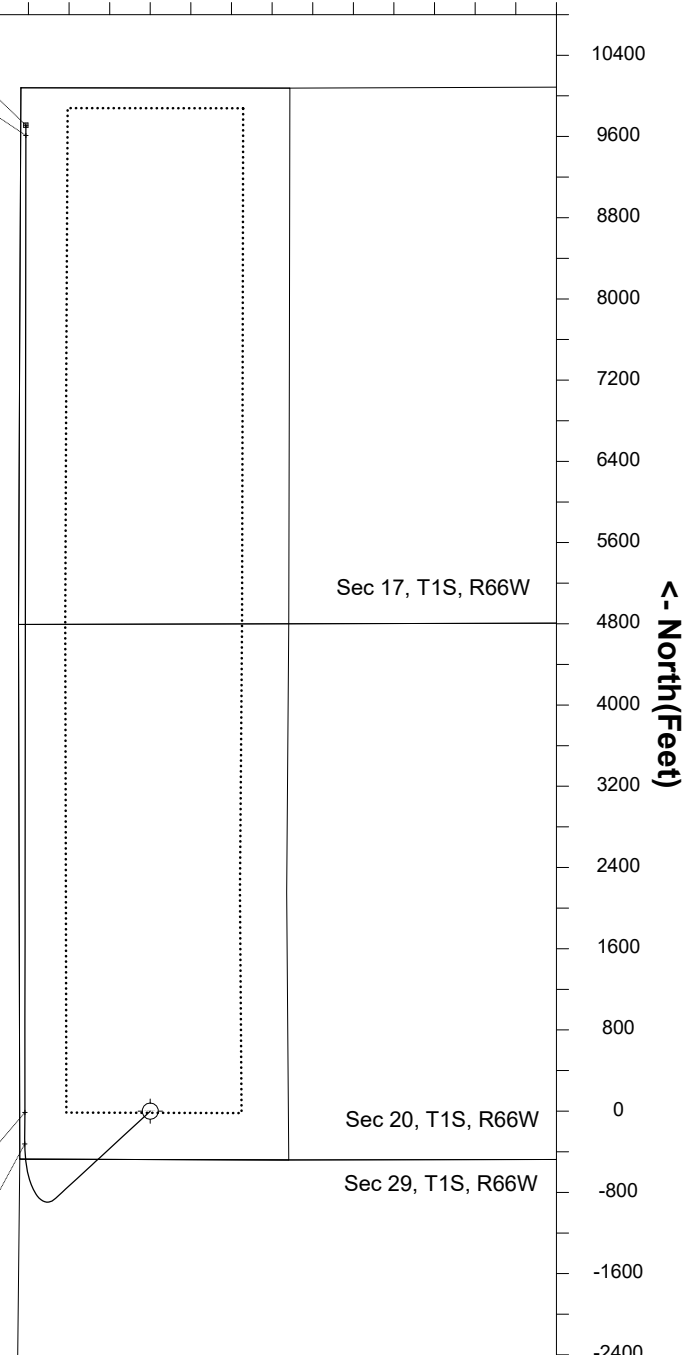
Azimuth 352.81 with reference 0.00 N, 0.00 E from S16 - Prairie LE 17-021HN

## WELL PROFILE DATA

Point	MD	Inc	Azi	TVD	North	East	deg/100ft	
Tie on	0.00	0.00	0.00	0.00	S 0.00	W 0.00		
KOP	4150.00	0.00	227.36	4150.00	S 0.00	W 0.00	0.00	
Target EP - 8...Sec 20	8282.60	90.00	0.06	7573.00	S 323.09	W 1235.69	10.00	
Target TPZ - 8...Sec 2	8592.60	90.00	0.06	7573.00	S 13.09	W 1235.69	0.00	
Target Btm Perf ..... 17	18215.71	90.00	0.06	7573.00	N 9610.01	W 1225.10	0.00	
T.D. & Target BHL... 17	18315.71	90.00	0.06	7573.00	N 9710.01	W 1225.10	0.00	

TPZ - 8593 / 7437 MD/TVD, 460 FSL, 50 FWL Sec 20

EP - 8283 / 7573 MD/TVD, 150 FSL, 50 FWL Sec 20



<- North(Feet)