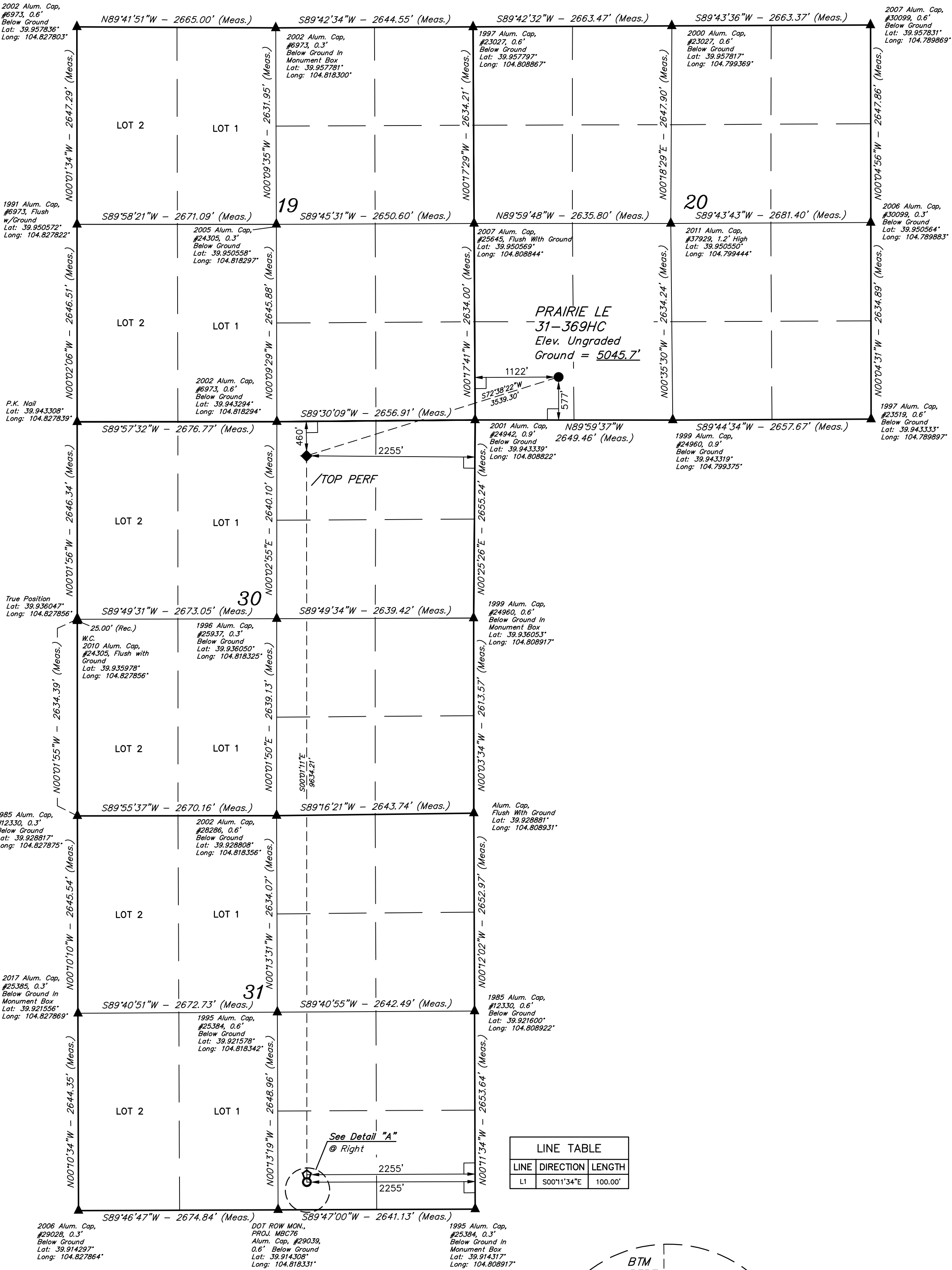


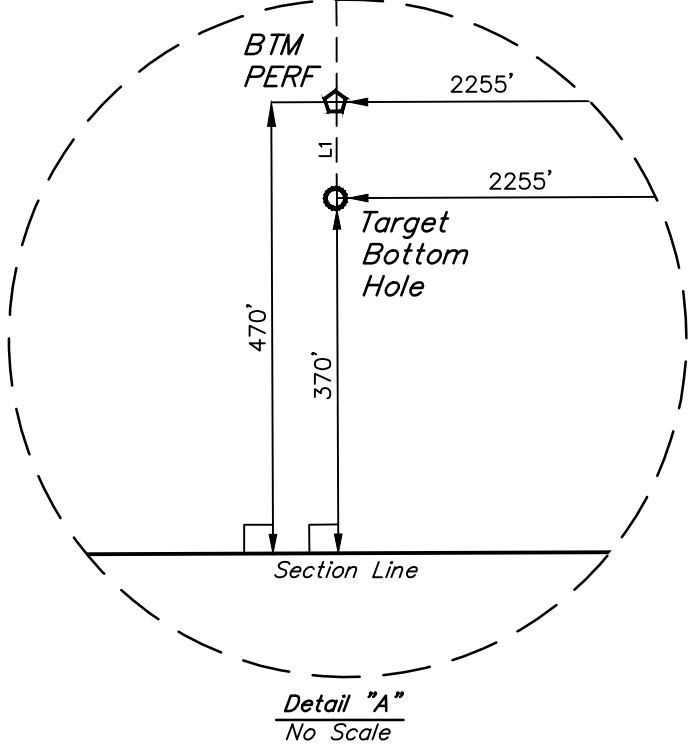
LEGEND:

- 90° SYMBOL
- PROPOSED WELLHEAD
- ENTRY POINT/TOP PERF
- BTM PERF
- TARGET BOTTOM HOLE
- SECTION CORNERS LOCATED. (NAD 83)
- SECTION CORNERS RE-ESTABLISHED. (Not Set on Ground.) (NAD 83)

T1S, R66W, 6th P.M.



LINE TABLE		
LINE	DIRECTION	LENGTH
L1	S00°11'34"E	100.00'



CERTIFICATE OF RECORDING
THIS IS TO CERTIFY THAT THE ABOVE DESCRIBED SURVEY WAS PREPARED AND CONDUCTED IN ACCORDANCE WITH THE PROVISIONS OF THE COLORADO SURVEYING ACT, AND THAT THE SAME ARE TRUE AND CORRECT TO THE BEST OF MY KNOWLEDGE AND BELIEF.
RECORDED LAND SURVEYOR
REGISTRATION NO. 28285
STATE OF COLORADO
JARED CHRISTOPHER



NAD 83 (SURFACE LOCATION)	NAD 83 (ENTRY POINT/TOP PERF)	NAD 83 (BTM PERF)	NAD 83 (TARGET BOTTOM HOLE)
LATITUDE = 39°56'41.69" (39.944914)	LATITUDE = 39°56'31.34" (39.942040)	LATITUDE = 39°54'56.16" (39.915599)	LATITUDE = 39°54'55.17" (39.915325)
LONGITUDE = 104°48'17.37" (104.804824)	LONGITUDE = 104°49'00.76" (104.816879)	LONGITUDE = 104°49'01.04" (104.816955)	LONGITUDE = 104°49'01.04" (104.816954)
NAD 27 (SURFACE LOCATION)	NAD 27 (ENTRY POINT/TOP PERF)	NAD 27 (BTM PERF)	NAD 27 (TARGET BOTTOM HOLE)
LATITUDE = 39°56'41.75" (39.944929)	LATITUDE = 39°56'31.40" (39.942055)	LATITUDE = 39°54'56.21" (39.915614)	LATITUDE = 39°54'55.22" (39.915340)
LONGITUDE = 104°48'15.47" (104.804296)	LONGITUDE = 104°48'58.86" (104.816350)	LONGITUDE = 104°48'59.13" (104.816426)	LONGITUDE = 104°48'59.13" (104.816426)

BASIS OF BEARINGS
BASIS OF ELEVATION
USGS COOPERATIVE BASE NETWORK CONTROL STATION,
DESIGNATION "JR 53 5026", NGS DATA SHEET LISTS THE NAVD 88
ELEVATION AS BEING 5028 FEET.



UELS, LLC
Corporate Office * 85 South 200 East
Vernal, UT 84078 * (435) 789-1017



REV: 2 02-20-20 K.B. (UPDATE ENTRY POINT/TOP PERF)

GREAT WESTERN OPERATING COMPANY

PRAIRIE LE 31-369HC
SW 1/4 SW 1/4, SECTION 20, T1S, R66W, 6th P.M.
ADAMS COUNTY, COLORADO

SURVEYED BY	JARED CHRISTOPHER	09-21-18	SCALE
DRAWN BY	B.L.B.	09-21-18	1" = 1000'

WELL LOCATION PLAT