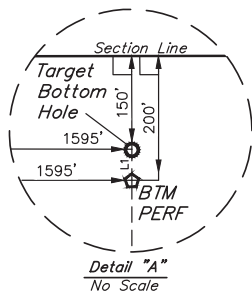


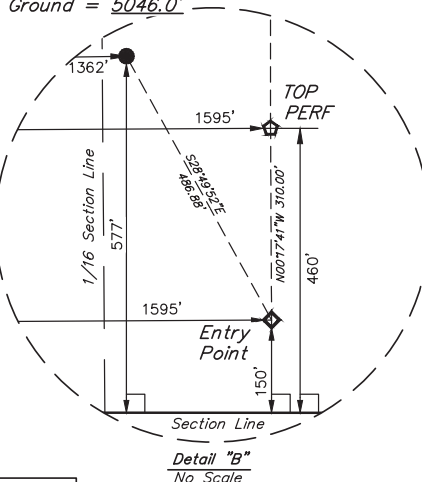
# LEGEND:

- = 90° SYMBOL
- = PROPOSED WELLHEAD.
- ◆ = ENTRY POINT.
- ◆ = ENTRY POINT/TOP PERF
- = PERF. POINT
- = TARGET BOTTOM HOLE.
- ▲ = SECTION CORNERS LOCATED. (NAD 83)
- △ = SECTION CORNERS RE-ESTABLISHED. (Not Set on Ground.) (NAD 83)

LINE TABLE		
LINE	DIRECTION	LENGTH
L1	N00°07'20"E	50.00'



PRAIRIE LE  
17-015HNX  
Elev. Ungraded  
Ground = 5046.0'



PDOP = 1.1

<b>NAD 83 (SURFACE LOCATION)</b>	
LATITUDE = 39°56'41.68" (39.944912)	
LONGITUDE = 104°48'14.29" (104.803968)	
<b>NAD 27 (SURFACE LOCATION)</b>	
LATITUDE = 39°56'41.74" (39.944927)	
LONGITUDE = 104°48'12.39" (104.803441)	
<b>NAD 83 (ENTRY POINT)</b>	
LATITUDE = 39°56'37.46" (39.943740)	
LONGITUDE = 104°48'11.29" (104.803135)	
<b>NAD 27 (ENTRY POINT)</b>	
LATITUDE = 39°56'37.52" (39.943755)	
LONGITUDE = 104°48'09.39" (104.802608)	
<b>NAD 83 (TOP PERF)</b>	
LATITUDE = 39°56'40.53" (39.944590)	
LONGITUDE = 104°48'11.30" (104.803138)	
<b>NAD 27 (TOP PERF)</b>	
LATITUDE = 39°56'40.58" (39.944606)	
LONGITUDE = 104°48'09.40" (104.802610)	
<b>NAD 83 (BTM PERF)</b>	
LATITUDE = 39°58'18.32" (39.971754)	
LONGITUDE = 104°48'11.14" (104.803094)	
<b>NAD 27 (BTM PERF)</b>	
LATITUDE = 39°58'18.37" (39.971770)	
LONGITUDE = 104°48'09.24" (104.802567)	
<b>NAD 83 (TARGET BOTTOM HOLE)</b>	
LATITUDE = 39°58'18.81" (39.971892)	
LONGITUDE = 104°48'11.14" (104.803093)	
<b>NAD 27 (TARGET BOTTOM HOLE)</b>	
LATITUDE = 39°58'18.87" (39.971908)	
LONGITUDE = 104°48'09.24" (104.802566)	

## BASIS OF BEARINGS

BASIS OF BEARINGS IS A G.P.S. OBSERVATION

## BASIS OF ELEVATION

USGS COOPERATIVE BASE NETWORK CONTROL STATION,  
DESIGNATION "JR 53 5026". NGS DATA SHEET LISTS THE NAVD 88  
ELEVATION AS BEING 5028 FEET.



UELS, LLC  
Corporate Office \* 85 South 200 East  
Vernal, UT 84078 \* (435) 789-1017

T1S, R66W, 6th P.M.

2010 Alum. Cap,  
#22561, 0.5' Below  
Ground In  
Monument Box  
Lat: 39.972308°  
Long: 104.808781°

2006 Alum. Cap,  
#27269, 0.6'  
Below Ground  
Lat: 39.965053°  
Long: 104.808825°

1997 Alum. Cap,  
#23027, 0.6'  
Below Ground  
Lat: 39.957797°  
Long: 104.808867°

2001 Alum. Cap,  
#24942, 0.9'  
Below Ground  
Lat: 39.943339°  
Long: 104.808822°

1999 Alum. Cap,  
#24960, 0.9'  
Below Ground  
Lat: 39.943319°  
Long: 104.799375°

CERTIFICATE OF REGISTRATION  
THIS IS TO CERTIFY THAT THE ABOVE NAMED LAND SURVEYOR HAS COMPLETED  
NOTES OF ACTUAL SURVEYS MADE BY HIMSELF OR UNDER HIS SUPERVISION  
AND THAT THE SAME ARE TRUE AND CORRECT TO THE BEST OF HIS KNOWLEDGE AND BELIEF.  
RECORDED LAND SURVEYOR  
REGISTRATION NO. 28285  
STATE OF UTAH  
JAN 19 2019

REV: 1 07-26-19 Z.T. (SHL CHANGE)

## GREAT WESTERN OPERATING COMPANY

PRAIRIE LE 17-015HNX  
SE 1/4 SW 1/4, SECTION 20, T1S, R66W, 6th P.M.  
ADAMS COUNTY, COLORADO

SURVEYED BY	JARED CHRISTOPHER	09-21-18	SCALE
DRAWN BY	B.L.B.	09-21-18	1" = 1000'

## WELL LOCATION PLAT