

Nov-6-2018
EMM-2015 Dip: 66.28 deg Field: 51926.9 nT
Lat: N39 56 40.5024 Long: W104 48 16.6932 Elev: 5047.00 ft
Magnetic North is 8.15 deg East of TRUE North
To correct azimuth from Magnetic to TRUE add 8.15 deg

Great Western Operating Company, LLC

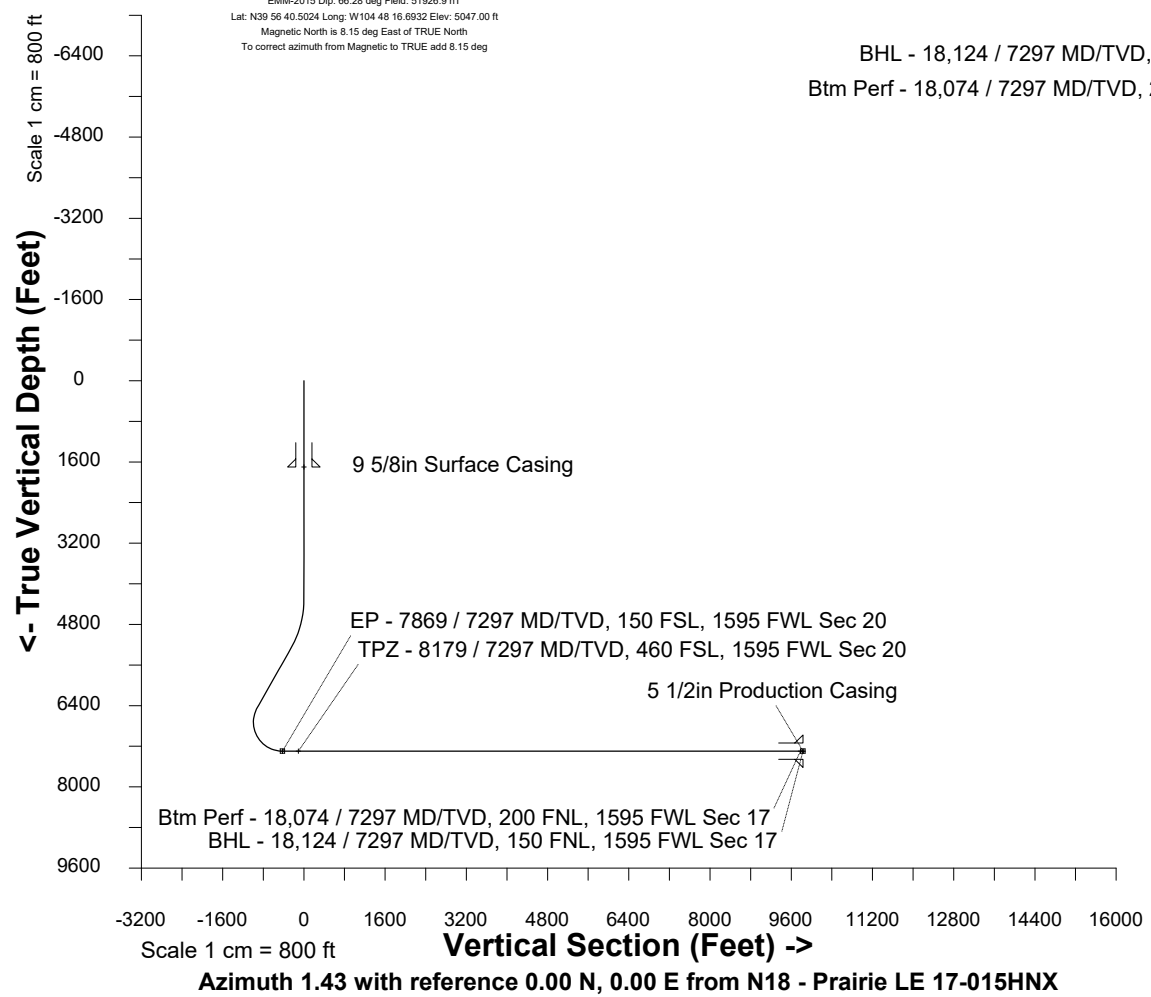
Location	Colorado	Slot	N18 - Prairie LE 17-015HNX
Field	Wattenburg	Well	. Prairie LE 17-015HNX
Installation	Prairie	Wellbore	N18 - Prairie LE 17-015HNX (PWB)

Scale 1 cm = 450 ft

East (Feet) ->

Created by mmount
Date plotted 20-Dec-2019

Plot reference is N18 - Prairie LE 17-015HNX (PWB).
Ref wellpath is N18 - Prairie LE 17-015HNX (PWP#1).
Coordinates are in Feet reference N18 - Prairie LE 17-015HNX.
True Vertical Depths are reference Rig Datum.
Measured Depths are reference Rig Datum.
Rig Datum: Planned Datum #1
Rig Datum to Mean Sea Level: 5067.00 ft.
Plot North is aligned to TRUE North.



WELL PROFILE DATA

Point	MD	Inc	Azi	TVD	North	East	deg/100ft	
Tie on	0.00	0.00	0.00	0.00	S 0.00	W 0.00		
KOP	4309.50	0.00	170.64	4309.50	S 0.00	W 0.00	0.00	
Target EP - 7...Sec 20	7868.58	90.00	0.07	7297.00	S 426.94	E 233.57	10.00	
Target TPZ - 7...Sec 2	8178.58	90.00	0.07	7297.00	S 16.94	E 233.57	0.00	
Target BTM PERF... 17	18073.90	90.00	0.07	7297.00	N 9778.38	E 245.24	0.00	
T.D. & Target BHL... 17	18123.90	90.00	0.07	7297.00	N 9828.38	E 245.24	0.00	

