

Nov-6-2018
EMM-2015 Dip: 66.28 deg Field: 51926.9 nT
Lat: N39 56 40.5024 Long: W104 48 16.6932 Elev: 5047.00 ft
Magnetic North is 8.15 deg East of TRUE North
To correct azimuth from Magnetic to TRUE add 8.15 deg

Great Western Operating Company, LLC

Location	Colorado	Slot	N17 - Prairie LE 17-015HN
Field	Wattenburg	Well	Prairie LE 17-015HN
Installation	Prairie	Wellbore	N17 - Prairie LE 17-015HN (PWB)

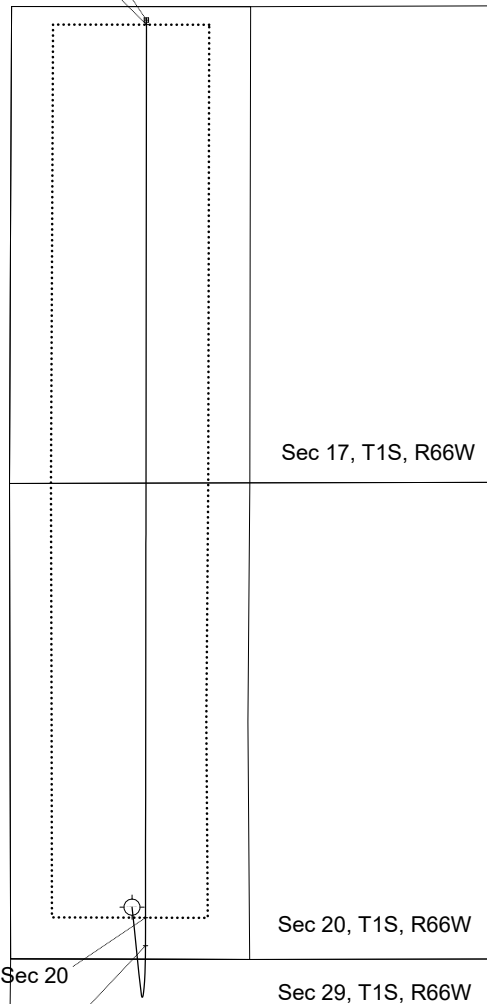
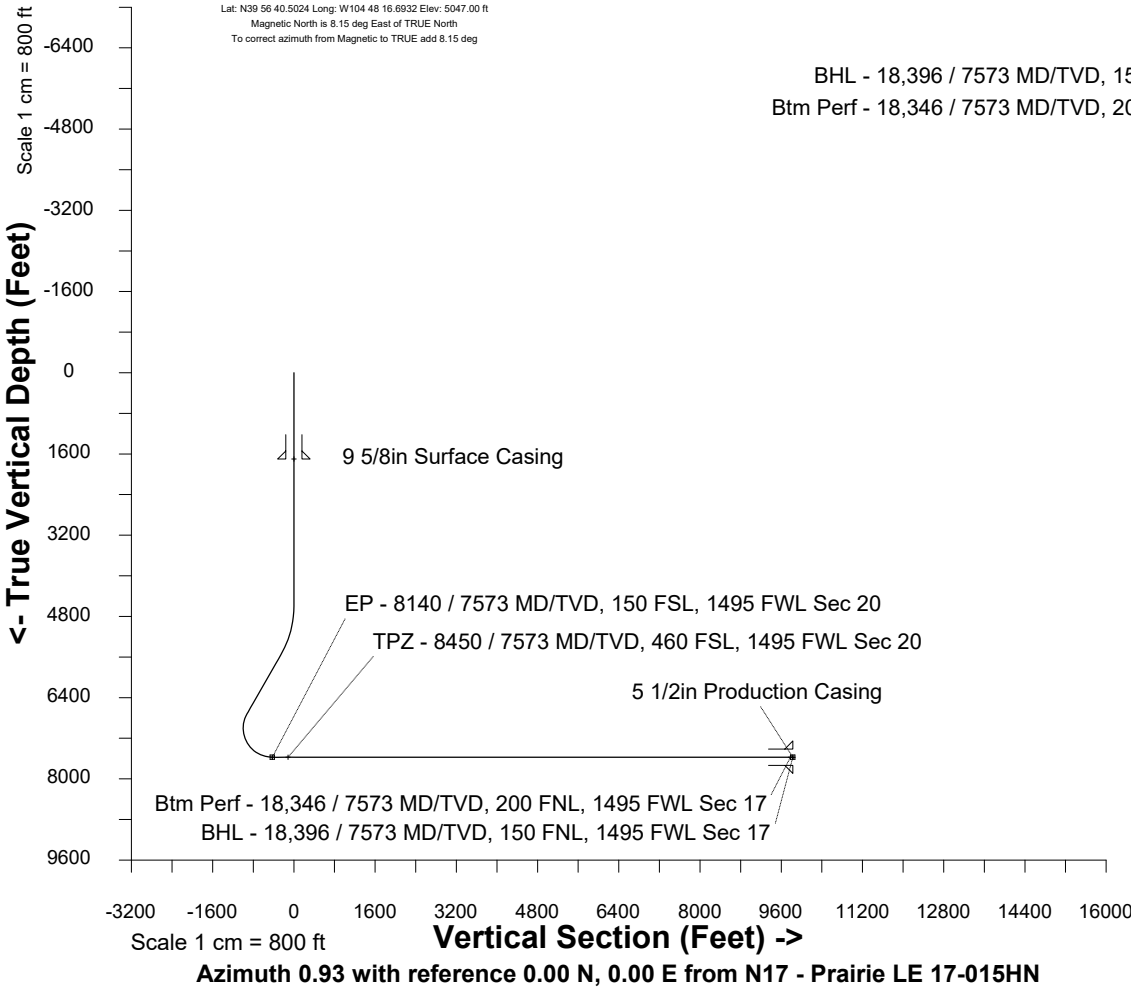
Scale 1 cm = 450 ft

East (Feet) ->

-7200 -6300 -5400 -4500 -3600 -2700 -1800 -900 0 900 1800 2700 3600 4500 5400

Created by mmount
Date plotted 20-Dec-2019

Plot reference is N17 - Prairie LE 17-015HN (PWB).
Ref wellpath is N17 - Prairie LE 17-015HN (PWP#1).
Coordinates are in Feet reference N17 - Prairie LE 17-015HN.
True Vertical Depths are reference Rig Datum.
Measured Depths are reference Rig Datum.
Rig Datum: Planned Datum #1
Rig Datum to Mean Sea Level: 5067.00 ft.
Plot North is aligned to TRUE North.



WELL PROFILE DATA								
Point	MD	Inc	Azi	TVD	North	East	deg/100ft	
Tie on	0.00	0.00	0.00	0.00	S 0.00	W 0.00		
KOP	4596.00	0.00	174.05	4596.00	S 0.00	W 0.00	0.00	
Target EP - 7...Sec 20	8140.33	90.00	0.07	7573.00	S 426.94	E 148.61	0.00	
Target TPZ - 7...Sec 2	8450.33	90.00	0.07	7573.00	S 16.94	E 148.61	10.00	
Target BTM PERF.. 17	18345.65	90.00	0.07	7573.00	N 9778.38	E 160.32	0.00	
T.D. & Target BHL... 17	18395.65	90.00	0.07	7573.00	N 9828.38	E 160.32	0.00	

TPZ - 8450 / 7573 MD/TVD, 460 FSL, 1495 FWL Sec 20
EP - 8140 / 7573 MD/TVD, 150 FSL, 1495 FWL Sec 20