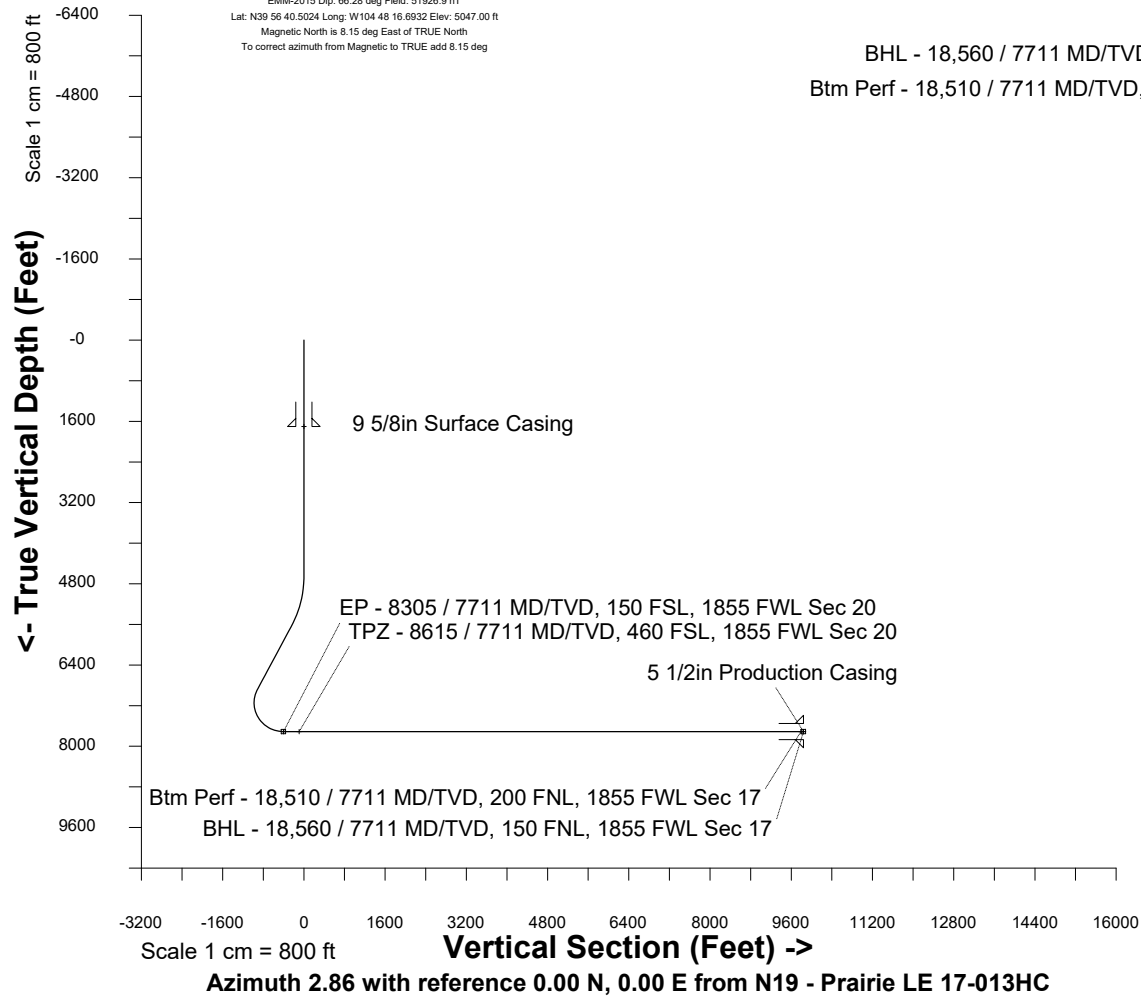


Nov-6-2018
EMM-2015 Dip: 66.28 deg Field: 51926.9 nT
Lat: N39 56 40.5024 Long: W104 48 16.6932 Elev: 5047.00 ft
Magnetic North is 8.15 deg East of TRUE North
To correct azimuth from Magnetic to TRUE add 8.15 deg

Great Western Operating Company, LLC							
Location	Colorado			Slot	N19 - Prairie LE 17-013HC		
Field	Wattenburg			Well	Prairie LE 17-013HC		
Installation	Prairie			Wellbore	N19 - Prairie LE 17-013HC (PWB)		

Created by	mmount
Date plotted	20-Dec-2019
Plot reference is N19 - Prairie LE 17-013HC (PWB). Ref wellpath is N19 - Prairie LE 17-013HC (PWP#1). Coordinates are in Feet reference N19 - Prairie LE 17-013HC. True Vertical Depths are reference Rig Datum. Measured Depths are reference Rig Datum. Rig Datum: Planned Datum #1 Rig Datum to Mean Sea Level: 5067.00 ft. Plot North is aligned to TRUE North.	



WELL PROFILE DATA

Point	MD	Inc	Azi	TVD	North	East	deg/100ft	
Tie on	0.00	0.00	0.00	0.00	S 0.00	W 0.00		
KOP	4662.00	0.00	160.98	4662.00	S 0.00	W 0.00	0.00	
Target EP - 8...Sec 20	8304.75	90.00	0.06	7711.00	S 427.66	E 478.63	10.00	
Target TPZ - 8.Sec 20	8614.75	90.00	0.06	7711.00	S 117.66	E 478.63	0.00	
Target BTM PERF.. 17	18510.44	90.00	0.06	7711.00	N 9778.02	E 490.21	0.00	
T.D. & Target BHL... 17	18560.44	90.00	0.06	7711.00	N 9828.02	E 490.21	0.00	

