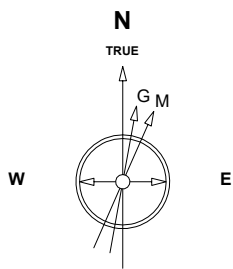


Great Western Operating Company, LLC

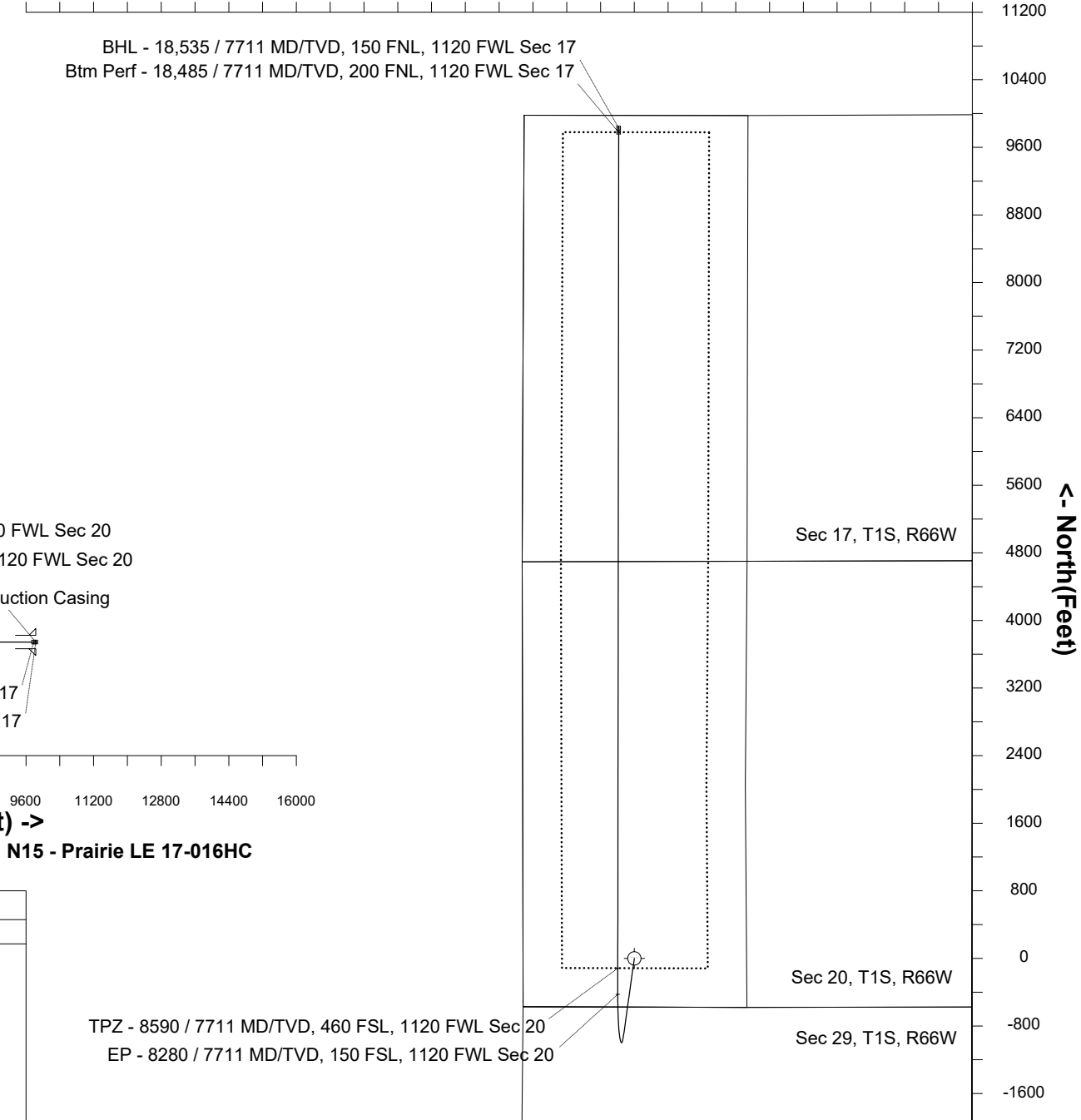
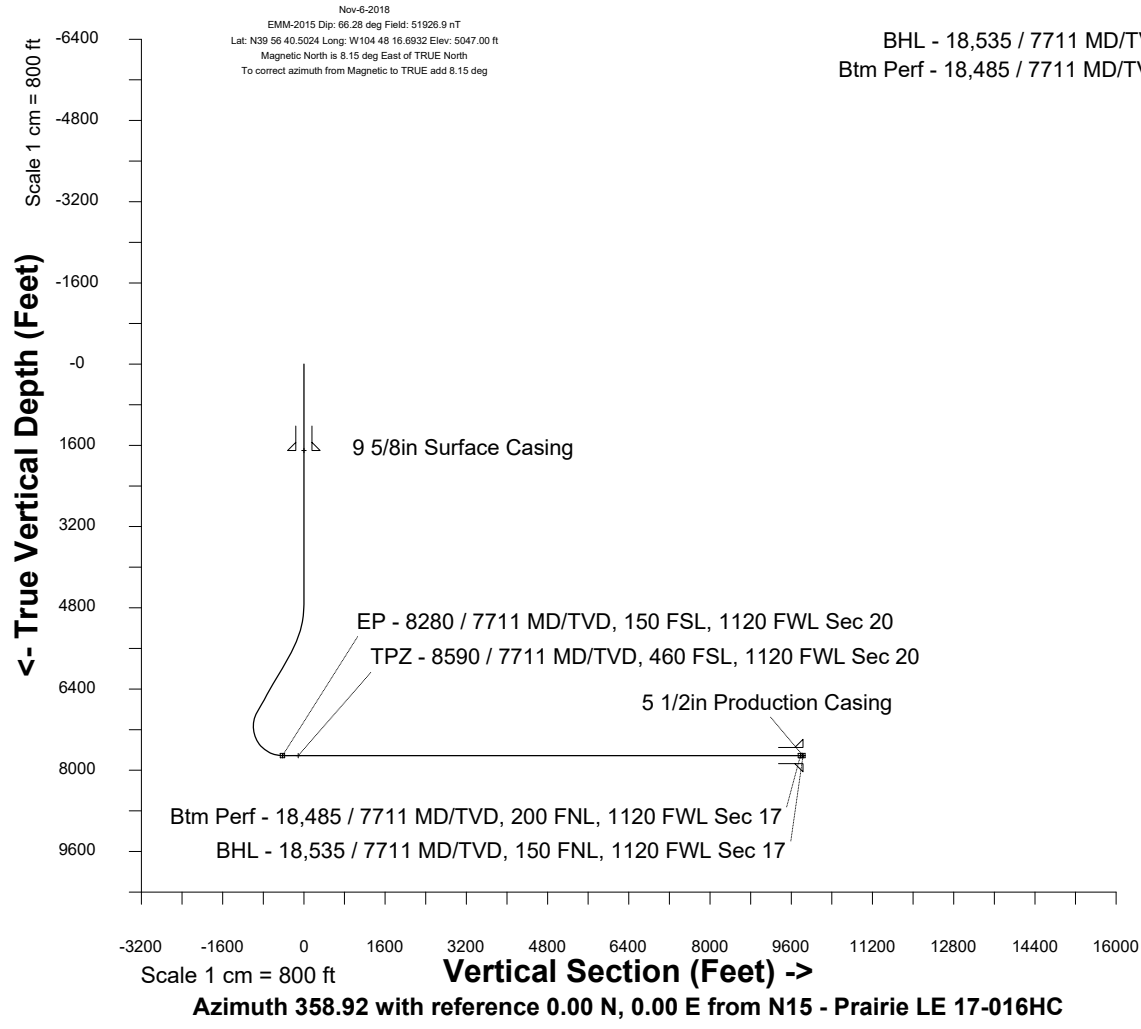
Location Colorado **Slot** N15 - Prairie LE 17-016HC
Field Wattenburg **Well** Prairie LE 17-016HC
Installation Prairie **Wellbore** N15 - Prairie LE 17-016HC (PWB)

Created by mmount
 Date plotted 19-Dec-2019
 Plot reference is N15 - Prairie LE 17-016HC (PWB).
 Ref wellpath is N15 - Prairie LE 17-016HC (PWP#1).
 Coordinates are in Feet reference N15 - Prairie LE 17-016HC.
 True Vertical Depths are reference Rig Datum.
 Measured Depths are reference Rig Datum.
 Rig Datum: Planned Datum #1
 Rig Datum to Mean Sea Level: 5067.00 ft.
 Plot North is aligned to TRUE North.



Scale 1 cm = 400 ft **East (Feet) ->**

-7200 -6400 -5600 -4800 -4000 -3200 -2400 -1600 -800 0 800 1600 2400 3200 4000



WELL PROFILE DATA

Point	MD	Inc	Azi	TVD	North	East	deg/100ft
Tie on	0.00	0.00	0.00	0.00	S 0.00	W 0.00	
KOP	4730.00	0.00	187.96	4730.00	S 0.00	W 0.00	0.00
End of Build	5730.14	30.00	187.96	5685.05	S 253.48	W 35.43	3.00
Target EP - 8...Sec 20	8280.27	90.00	0.06	7711.00	S 425.85	W 196.28	10.00
Target TPZ - 8...Sec 2	8590.27	90.00	0.06	7711.00	S 115.85	W 196.28	0.00
Target Btm Pe...Sec 17	18484.96	90.00	0.06	7711.00	N 9778.83	W 184.70	0.00
End of Turn	18485.65	90.00	360.00	7711.00	N 9779.52	W 184.70	10.00
T.D. & Target BHL... 17	18534.86	90.00	360.00	7711.00	N 9828.74	W 184.70	0.00