



Mr. Phillip Porter
PDC Energy Inc.
4000 Burlington Avenue
Evans, Colorado 80620

September 14, 2020

RE: Vegetation Assessment Report (Final Reclamation Completion Notice)
COGCC Location Information: ELDER-65N64W /21SWSW (Location I.D. 328363)
Operator Location Information: Elder 13-21 Well & Facility (API #05-123-1589)
PDC Energy Inc. (Operator: 69175)

Dear Mr. Porter:

Apex Companies, LLC (Apex) is presenting this letter to PDC Energy Inc. (PDC) documenting the results of a vegetation assessment that demonstrates successful completion of final reclamation efforts, per Colorado Oil & Gas Conservation Commission (COGCC) Rule 1004, on the above-referenced location. This conclusion is based on site visits, project correspondence, site documentation, and the completed vegetation assessment. Attached is a topographic location map and a vegetation survey site map with additional location information.

On June 17, 2020, modified step-point vegetation surveys were conducted on the reclaimed portion of the well site, and on adjacent reference areas. Foliar and basal cover, along with non-vegetated and noxious weed occurrences, were documented; 100 survey points were recorded within the reclaimed disturbance and 100 survey points were recorded within the reference area. Vegetation survey points were identified using a bullseye target tool. The survey methodology employed by Apex is based on the *step-point method* described in an interagency technical reference published by the Bureau of Land Management (BLM, 1996).

Noxious weeds listed by the Colorado Department of Agriculture were excluded from the percent of reference vegetative coverage calculations, per COGCC Rule 1004.d. To ensure reclamation vegetative composition meets the standards of PDC and the COGCC, undesirable cover is also quantified in the attached Summary of Field Data. Undesirable cover includes species identified by the United States Department of Agriculture (USDA) Natural Resource Conservation Service (NRCS) as introduced and not native to the lower 48 states, and not considered beneficial for reclamation purposes.

Survey results indicate the reclaimed area has a foliar vegetative cover that is 113.5% of the reference area. Vegetation survey results are provided in the attached Summary of Field Data and Field Data Tables. Based on the results of the survey, final reclamation, as defined by COGCC rules and regulations, has been achieved. Photographs exhibiting current site conditions are also attached along with the site map illustrating the vegetation survey photo points and transect locations.

Apex appreciates the opportunity to provide environmental consulting services on this project. Should you have any questions or require additional information, please do not hesitate to contact me.

Sincerely,
Apex Companies, LLC



Carolyn Craveiro de Sá
Environmental Scientist
720-537-5478
Carolyn.CraveirodeSa@apexcoss.com

Attachments:

1. Vegetation Survey - Summary of Field Data
2. Topographic Location Map
3. Vegetation Survey Site Map
4. Vegetation Assessment Photo Log
5. Vegetation Survey (Field Data Tables)

Reference:

United States (U.S.) Department of Agriculture (USDA), Forest Service (USFS), Natural Resource Conservation Service (NRCS) and U.S. Department of the Interior (USDOI) Bureau of Land Management (BLM). "Sampling Vegetation Attributes, Interagency Technical Reference, 1996 (Revised in 1997, and 1999)". USDOI BLM Technical References #1734-4.
Date Accessed: August 2, 2017

Vegetation Survey - Summary of Field Data

Client	PDC ENERGY INC
Operator Location Information	Elder 13-21 Well & Facility (API: 05-123-1589)
Assessment Date	6/17/2020
Inspector Name	Carolyn Craveiro De Sa

Based on the survey methodology, the foliar cover (%) in each survey area is calculated by summing the total number of foliar occurrences, excluding noxious weeds, and dividing by the total occurrences in the transects. For this location:

Reclaim Area (Foliar Cover)	Reference Area (Foliar Cover)
$(30 + 12 + 0) / 200 =$ 21.0%	$(29 + 8 + 0) / 200 =$ 18.5%

For the purposes of this assessment, the undesirable foliar cover (%) is calculated by summing the total number of undesirable* foliar occurrences and dividing by the total occurrences in the transects, excluding noxious weeds. For this location:

Reclaim Area (Undesirable Foliar Cover)	Reference Area (Undesirable Foliar Cover)
$9 / (30 + 12 + 0) =$ 21.4%	$7 / (29 + 8 + 0) =$ 18.9%

The percent of reference used to evaluate the reclamation area for compliance with COGCC Rule 1003.e(2) is calculated by dividing the foliar cover (%) in the reclaim area by the foliar cover (%) in the reference area. For this location:

Percent of Reference (Reclaim % / Reference %)
$21.0\% / 18.5\% =$ 113.5%

Reclaim Area Vegetation

Desirable Foliar Cover	16.5%
Desirable Basal Cover	10.5%
Non Vegetated	67.5%
Noxious Weeds Cover	0.5%
Undesirable Cover	5.0%
Quality Assurance Total <i>(must equal 100)</i>	100.0%
Grass (Foliar)	30
Forb (Foliar)	12
Shrubs (Foliar)	0
Noxious Weed (Foliar)	1
Grass (Basal)	19
Forb (Basal)	3
Shrubs (Basal)	0
Noxious Weed (Basal)	0
Bare Ground	47
Litter	88
Rock	0
Total Occurrences	200

Reference Area Vegetation

Desirable Foliar Cover	15.0%
Desirable Basal Cover	7.5%
Non Vegetated	61.0%
Noxious Weeds Cover	12.0%
Undesirable Cover	4.5%
Quality Assurance Total <i>(must equal 100)</i>	100.0%
Grass (Foliar)	29
Forb (Foliar)	8
Shrubs (Foliar)	0
Noxious Weed (Foliar)	18
Grass (Basal)	15
Forb (Basal)	2
Shrubs (Basal)	0
Noxious Weed (Basal)	6
Bare Ground	21
Litter	101
Rock	0
Total Occurrences	200

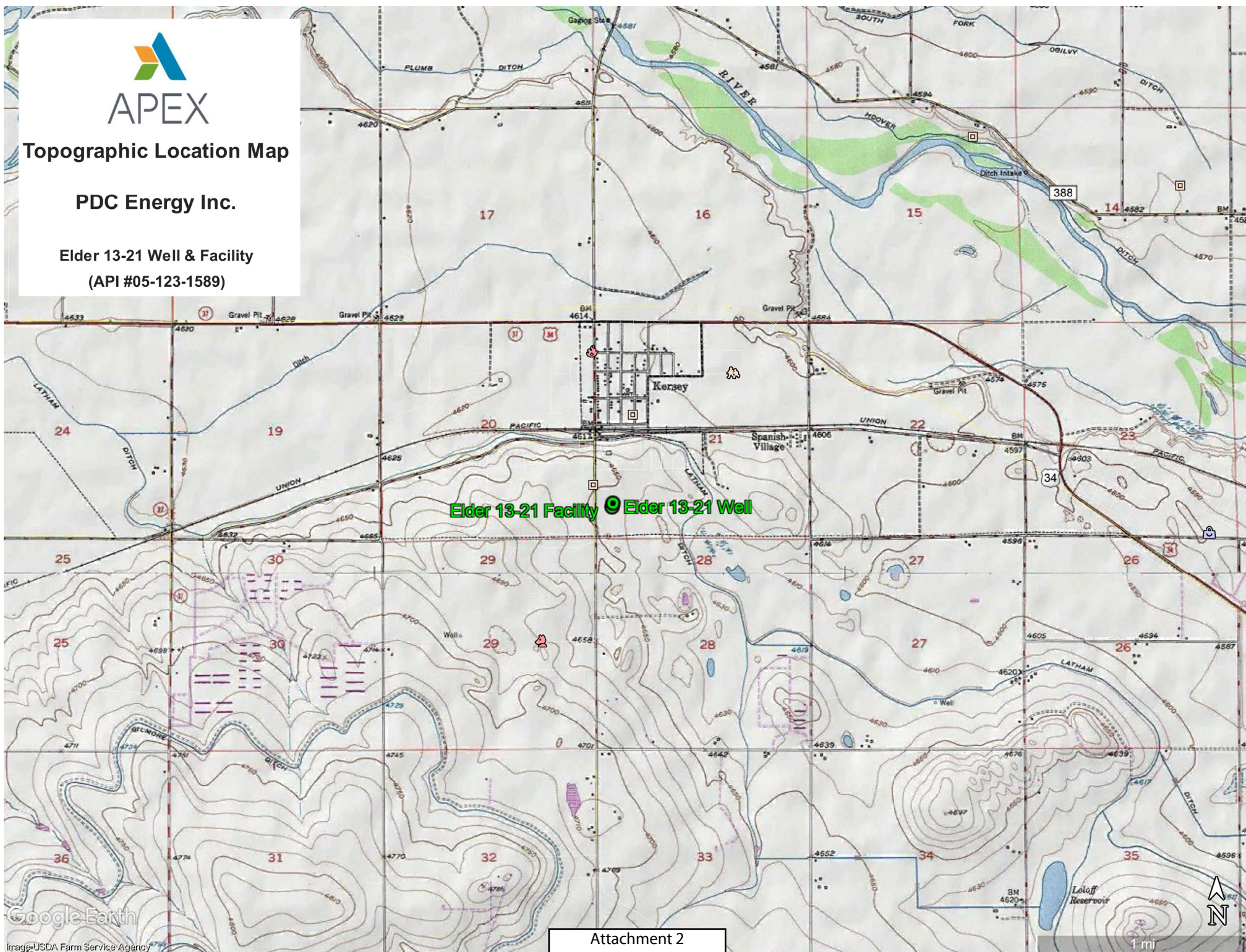
* Identified as introduced and non-native to Colorado by the United States Department of Agriculture Natural Resources Conservation Service.



Topographic Location Map

PDC Energy Inc.

Elder 13-21 Well & Facility
(API #05-123-1589)









Vegetation Survey Site Map

PDC Energy Inc.

Elder 13-21 Well & Facility
(API #05-123-1589)

-  Vegetation Photo Point
-  Cardinal Direction Photos
-  Reclaim Transect
-  Reference Transect

Legal Description: SWSW, Sec. 21, T5N-R64W

Lat/Long: 40.379722/-104.5625

County: Weld

Land Use: Non-Cropland

Reference Area Foliar Cover: 18.5%

Reclaim Area Foliar Cover: 21.0%

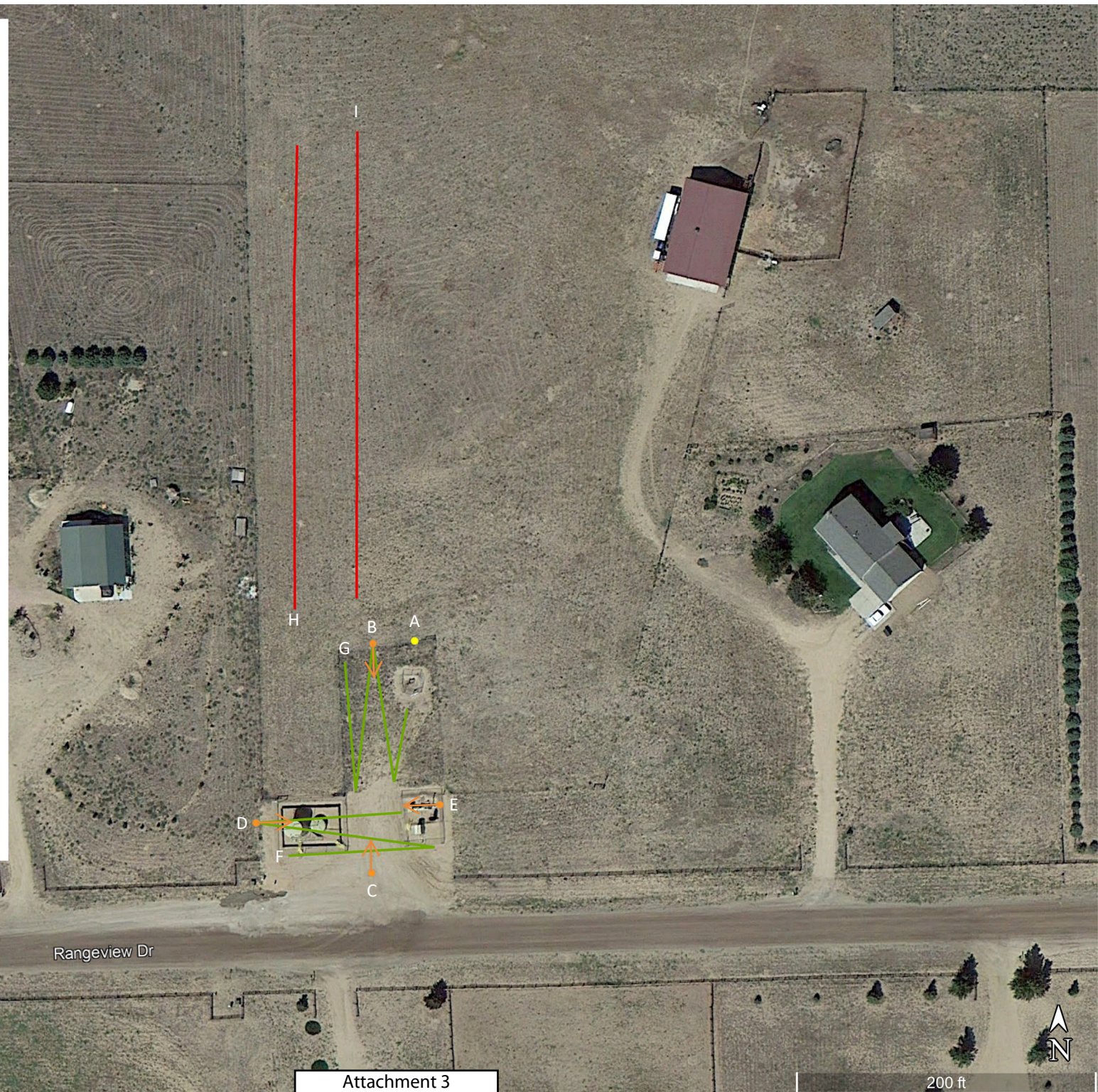
Cover Ratio (Reclaim/Reference): 113.5%

Inspector: C. Craveiro de Sa

Assessment Date: 06/17/2020

Aerial Imagery Date: 09/07/2013

**Please reference coordinate disclaimer on the photo log pages.*



Vegetation Assessment Photo Log

Date Completed - 06/17/2020

Client - PDC Energy Inc.

Operator Location Information (API) - Elder 13-21 Well & Facility (API #05-123-1589)



Photo Point A: Edge of Disturbance - Facing South

*Geographic coordinates provided in the borders of all attached photos are based on points identified by the mobile phone or tablet which collected the photo. Coordinate accuracy in this format is typically no greater than 5 meters, while the points illustrated in the site diagram associated with this submittal were collected with a high accuracy GPS unit with sub-meter accuracy. Discrepancies between the site diagram and photo coordinates will exist.

Vegetation Assessment Photo Log

Date Completed - 06/17/2020

Client - PDC Energy Inc.

Operator Location Information (API) - Elder 13-21 Well & Facility (API #05-123-1589)



Photo Point B: North of Disturbance - Facing South



Photo Point C: South of Disturbance - Facing North



Photo Point D: West of Disturbance - Facing East



Photo Point E: East of Disturbance - Facing West

Vegetation Assessment Photo Log

Date Completed - 06/17/2020

Client - PDC Energy Inc.

Operator Location Information (API) - Elder 13-21 Well & Facility (API #05-123-1589)



Photo Point A: Reclaim Area Vegetation - Facing Southwest

Vegetation Assessment Photo Log

Date Completed - 06/17/2020

Client - **PDC Energy Inc.**
Operator Location Information - **Elder 13-21 Well & Facility**
(API) - **(API #05-123-1589)**



Transect Photo F: Reclaim Transect 1 - Facing East



Transect Photo G: Reclaim Transect 2 - Facing South

Vegetation Assessment Photo Log

Date Completed - 06/17/2020

Client - PDC Energy Inc.

Operator Location Information (API) - Elder 13-21 Well & Facility (API #05-123-1589)



Photo Point A: Reference Area Vegetation - Facing Northwest

Vegetation Assessment Photo Log

Date Completed - 06/17/2020

Client - **PDC Energy Inc.**
Operator Location Information - **Elder 13-21 Well & Facility**
(API) - **(API #05-123-1589)**



Transect Photo H: Reference Transect 1 - Facing North



Transect Photo I: Reference Transect 2 - Facing South

Vegetation Survey (Field Data Table)

Client: PDC ENERGY INC
 Operator Location Information Elder 13-21 Well & Facility (API #05-123-1589)
 Transect ID: Reclaim Transect 1
 Transect Length: 316 ft.
 Assessment Date: 6/17/2020
 Inspector: Carolyn Craveiro De Sa

Point	Foliar	Species	Basal	Species
1	Non Vegetative	Litter	Non Vegetative	Litter
2	Forb	<i>Ambrosia psilostachya</i>	Forb	<i>Ambrosia psilostachya</i>
3	Non Vegetative	Bare Ground	Non Vegetative	Bare Ground
4	Non Vegetative	Litter	Non Vegetative	Litter
5	Non Vegetative	Litter	Non Vegetative	Litter
6	Non Vegetative	Litter	Non Vegetative	Litter
7	Grass	<i>Agropyron cristatum</i>	Non Vegetative	Litter
8	Forb	<i>Kochia scoparia</i>	Non Vegetative	Bare Ground
9	Non Vegetative	Litter	Non Vegetative	Litter
10	Grass	<i>Agropyron cristatum</i>	Non Vegetative	Litter
11	Non Vegetative	Litter	Non Vegetative	Litter
12	Non Vegetative	Bare Ground	Non Vegetative	Bare Ground
13	Grass	<i>Agropyron cristatum</i>	Non Vegetative	Litter
14	Non Vegetative	Bare Ground	Non Vegetative	Bare Ground
15	Non Vegetative	Bare Ground	Non Vegetative	Bare Ground
16	Non Vegetative	Litter	Non Vegetative	Litter
17	Grass	<i>Agropyron cristatum</i>	Grass	<i>Agropyron cristatum</i>
18	Non Vegetative	Litter	Non Vegetative	Litter
19	Grass	<i>Agropyron cristatum</i>	Grass	<i>Agropyron cristatum</i>
20	Grass	<i>Thinopyrum intermedia</i>	Non Vegetative	Bare Ground
21	Non Vegetative	Litter	Non Vegetative	Litter
22	Forb	<i>Salsola L</i>	Non Vegetative	Litter
23	Non Vegetative	Bare Ground	Non Vegetative	Bare Ground
24	Non Vegetative	Litter	Non Vegetative	Litter
25	Non Vegetative	Litter	Non Vegetative	Litter
26	Grass	<i>Thinopyrum intermedia</i>	Grass	<i>Thinopyrum intermedia</i>
27	Non Vegetative	Litter	Non Vegetative	Litter
28	Non Vegetative	Bare Ground	Non Vegetative	Bare Ground
29	Grass	<i>Agropyron cristatum</i>	Non Vegetative	Litter
30	Non Vegetative	Litter	Non Vegetative	Litter
31	Non Vegetative	Litter	Non Vegetative	Litter
32	Forb	<i>Kochia scoparia</i>	Non Vegetative	Litter
33	Grass	<i>Thinopyrum intermedia</i>	Non Vegetative	Litter
34	Non Vegetative	Litter	Non Vegetative	Litter
35	Non Vegetative	Litter	Non Vegetative	Litter
36	Grass	<i>Thinopyrum intermedia</i>	Non Vegetative	Bare Ground
37	Non Vegetative	Bare Ground	Non Vegetative	Bare Ground
38	Grass	<i>Agropyron cristatum</i>	Grass	<i>Agropyron cristatum</i>
39	Non Vegetative	Bare Ground	Non Vegetative	Bare Ground
40	Non Vegetative	Bare Ground	Non Vegetative	Bare Ground
41	Non Vegetative	Bare Ground	Non Vegetative	Bare Ground
42	Grass	<i>Agropyron cristatum</i>	Grass	<i>Agropyron cristatum</i>
43	Non Vegetative	Litter	Non Vegetative	Litter
44	Grass	<i>Agropyron cristatum</i>	Grass	<i>Agropyron cristatum</i>
45	Grass	<i>Agropyron cristatum</i>	Non Vegetative	Litter
46	Non Vegetative	Bare Ground	Non Vegetative	Bare Ground
47	Non Vegetative	Bare Ground	Non Vegetative	Bare Ground
48	Grass	<i>Bromus inermis</i>	Grass	<i>Bromus inermis</i>
49	Non Vegetative	Bare Ground	Non Vegetative	Bare Ground
50	Non Vegetative	Bare Ground	Non Vegetative	Bare Ground

Vegetation Survey (Field Data Table)

Client: PDC ENERGY INC
 Operator Location Information Elder 13-21 Well & Facility (API #05-123-1589)
 Transect ID: Reclaim Transect 2
 Transect Length: 328 ft.
 Assessment Date: 6/17/2020
 Inspector: Carolyn Craveiro De Sa

Point	Foliar	Species	Basal	Species
1	Non Vegetative	Litter	Non Vegetative	Litter
2	Non Vegetative	Bare Ground	Non Vegetative	Bare Ground
3	Non Vegetative	Litter	Non Vegetative	Litter
4	Grass	<i>Thinopyrum intermedia</i>	Grass	<i>Thinopyrum intermedia</i>
5	Non Vegetative	Bare Ground	Non Vegetative	Bare Ground
6	Grass	<i>Thinopyrum intermedia</i>	Grass	<i>Thinopyrum intermedia</i>
7	Grass	<i>Agropyron cristatum</i>	Grass	<i>Agropyron cristatum</i>
8	Grass	<i>Agropyron cristatum</i>	Non Vegetative	Bare Ground
9	Non Vegetative	Bare Ground	Non Vegetative	Bare Ground
10	Non Vegetative	Bare Ground	Non Vegetative	Bare Ground
11	Grass	<i>Bromus inermis</i>	Grass	<i>Bromus inermis</i>
12	Non Vegetative	Litter	Non Vegetative	Litter
13	Non Vegetative	Litter	Non Vegetative	Litter
14	Non Vegetative	Litter	Non Vegetative	Litter
15	Non Vegetative	Litter	Non Vegetative	Litter
16	Noxious Weed C	<i>Bromus tectorum</i>	Non Vegetative	Litter
17	Non Vegetative	Litter	Non Vegetative	Litter
18	Grass	<i>Bromus inermis</i>	Grass	<i>Bromus inermis</i>
19	Forb	<i>Ambrosia psilostachya</i>	Non Vegetative	Litter
20	Forb	<i>Kochia scoparia</i>	Non Vegetative	Litter
21	Forb	<i>Ambrosia psilostachya</i>	Forb	<i>Ambrosia psilostachya</i>
22	Grass	<i>Agropyron cristatum</i>	Grass	<i>Agropyron cristatum</i>
23	Non Vegetative	Litter	Non Vegetative	Litter
24	Non Vegetative	Litter	Non Vegetative	Litter
25	Forb	<i>Kochia scoparia</i>	Non Vegetative	Litter
26	Grass	<i>Agropyron cristatum</i>	Grass	<i>Agropyron cristatum</i>
27	Forb	<i>Kochia scoparia</i>	Non Vegetative	Litter
28	Non Vegetative	Litter	Non Vegetative	Litter
29	Non Vegetative	Litter	Non Vegetative	Litter
30	Forb	<i>Kochia scoparia</i>	Non Vegetative	Litter
31	Non Vegetative	Litter	Non Vegetative	Litter
32	Non Vegetative	Bare Ground	Non Vegetative	Bare Ground
33	Forb	<i>Kochia scoparia</i>	Non Vegetative	Bare Ground
34	Grass	<i>Agropyron cristatum</i>	Grass	<i>Agropyron cristatum</i>
35	Non Vegetative	Litter	Non Vegetative	Litter
36	Grass	<i>Thinopyrum intermedia</i>	Grass	<i>Thinopyrum intermedia</i>
37	Forb	<i>Kochia scoparia</i>	Forb	<i>Kochia scoparia</i>
38	Grass	<i>Agropyron cristatum</i>	Grass	<i>Agropyron cristatum</i>
39	Non Vegetative	Litter	Non Vegetative	Litter
40	Non Vegetative	Litter	Non Vegetative	Litter
41	Non Vegetative	Bare Ground	Non Vegetative	Bare Ground
42	Grass	<i>Agropyron cristatum</i>	Grass	<i>Agropyron cristatum</i>
43	Non Vegetative	Litter	Non Vegetative	Litter
44	Grass	<i>Agropyron cristatum</i>	Grass	<i>Agropyron cristatum</i>
45	Non Vegetative	Bare Ground	Non Vegetative	Bare Ground
46	Non Vegetative	Litter	Non Vegetative	Litter
47	Grass	<i>Agropyron cristatum</i>	Non Vegetative	Litter
48	Non Vegetative	Litter	Non Vegetative	Litter
49	Non Vegetative	Litter	Non Vegetative	Litter
50	Grass	<i>Thinopyrum intermedia</i>	Non Vegetative	Litter

Vegetation Survey (Field Data Table)

Client: PDC ENERGY INC
 Operator Location Information Elder 13-21 Well & Facility (API #05-123-1589)
 Transect ID: Reference Transect 1
 Transect Length: 308 ft.
 Assessment Date: 6/17/2020
 Inspector: Carolyn Craveiro De Sa

Point	Foliar	Species	Basal	Species
1	Forb	<i>Kochia scoparia</i>	Non Vegetative	Litter
2	Noxious Weed C	<i>Bromus tectorum</i>	Non Vegetative	Litter
3	Grass	<i>Bromus inermis</i>	Non Vegetative	Litter
4	Non Vegetative	Litter	Non Vegetative	Litter
5	Non Vegetative	Bare Ground	Non Vegetative	Bare Ground
6	Forb	<i>Ambrosia psilostachya</i>	Non Vegetative	Litter
7	Grass	<i>Bromus inermis</i>	Non Vegetative	Litter
8	Noxious Weed C	<i>Bromus tectorum</i>	Non Vegetative	Litter
9	Grass	<i>Bromus inermis</i>	Non Vegetative	Litter
10	Grass	<i>Agropyron cristatum</i>	Grass	<i>Agropyron cristatum</i>
11	Noxious Weed C	<i>Bromus tectorum</i>	Noxious Weed C	<i>Bromus tectorum</i>
12	Grass	<i>Bromus inermis</i>	Non Vegetative	Litter
13	Noxious Weed C	<i>Bromus tectorum</i>	Non Vegetative	Litter
14	Noxious Weed C	<i>Bromus tectorum</i>	Non Vegetative	Litter
15	Non Vegetative	Litter	Non Vegetative	Litter
16	Non Vegetative	Litter	Non Vegetative	Litter
17	Grass	<i>Bromus inermis</i>	Non Vegetative	Litter
18	Grass	<i>Bromus inermis</i>	Non Vegetative	Litter
19	Non Vegetative	Litter	Non Vegetative	Litter
20	Non Vegetative	Litter	Non Vegetative	Litter
21	Noxious Weed C	<i>Bromus tectorum</i>	Non Vegetative	Litter
22	Non Vegetative	Litter	Non Vegetative	Litter
23	Non Vegetative	Litter	Non Vegetative	Litter
24	Grass	<i>Bromus inermis</i>	Non Vegetative	Litter
25	Non Vegetative	Litter	Non Vegetative	Litter
26	Non Vegetative	Litter	Non Vegetative	Litter
27	Grass	<i>Agropyron cristatum</i>	Grass	<i>Agropyron cristatum</i>
28	Non Vegetative	Litter	Non Vegetative	Litter
29	Grass	<i>Bromus inermis</i>	Grass	<i>Bromus inermis</i>
30	Non Vegetative	Bare Ground	Non Vegetative	Bare Ground
31	Non Vegetative	Bare Ground	Non Vegetative	Bare Ground
32	Non Vegetative	Bare Ground	Non Vegetative	Bare Ground
33	Noxious Weed C	<i>Bromus tectorum</i>	Noxious Weed C	<i>Bromus tectorum</i>
34	Forb	<i>Salsola L</i>	Forb	<i>Salsola L</i>
35	Non Vegetative	Litter	Non Vegetative	Litter
36	Grass	<i>Bromus inermis</i>	Grass	<i>Bromus inermis</i>
37	Grass	<i>Bromus inermis</i>	Non Vegetative	Litter
38	Non Vegetative	Litter	Non Vegetative	Litter
39	Non Vegetative	Litter	Non Vegetative	Litter
40	Noxious Weed C	<i>Bromus tectorum</i>	Non Vegetative	Litter
41	Non Vegetative	Bare Ground	Non Vegetative	Bare Ground
42	Non Vegetative	Litter	Non Vegetative	Litter
43	Grass	<i>Agropyron cristatum</i>	Grass	<i>Agropyron cristatum</i>
44	Grass	<i>Agropyron cristatum</i>	Non Vegetative	Litter
45	Non Vegetative	Litter	Non Vegetative	Litter
46	Non Vegetative	Litter	Non Vegetative	Litter
47	Forb	<i>Kochia scoparia</i>	Non Vegetative	Bare Ground
48	Grass	<i>Agropyron cristatum</i>	Grass	<i>Agropyron cristatum</i>
49	Non Vegetative	Litter	Non Vegetative	Litter
50	Non Vegetative	Litter	Non Vegetative	Litter

Vegetation Survey (Field Data Table)

Client: PDC ENERGY INC
Operator Location Information Elder 13-21 Well & Facility (API #05-123-1589)
Transect ID: Reference Transect 2
Transect Length: 310 ft.
Assessment Date: 6/17/2020
Inspector: Carolyn Craveiro De Sa

Point	Foliar	Species	Basal	Species
1	Noxious Weed C	<i>Bromus tectorum</i>	Noxious Weed C	<i>Bromus tectorum</i>
2	Non Vegetative	Litter	Non Vegetative	Litter
3	Grass	<i>Bromus inermis</i>	Grass	<i>Bromus inermis</i>
4	Noxious Weed C	<i>Bromus tectorum</i>	Noxious Weed C	<i>Bromus tectorum</i>
5	Non Vegetative	Litter	Non Vegetative	Litter
6	Forb	<i>Salsola L</i>	Non Vegetative	Litter
7	Forb	<i>Kochia scoparia</i>	Non Vegetative	Litter
8	Grass	<i>Bromus inermis</i>	Non Vegetative	Litter
9	Grass	<i>Bromus inermis</i>	Grass	<i>Bromus inermis</i>
10	Grass	<i>Bromus inermis</i>	Grass	<i>Bromus inermis</i>
11	Noxious Weed C	<i>Bromus tectorum</i>	Non Vegetative	Litter
12	Non Vegetative	Litter	Non Vegetative	Litter
13	Non Vegetative	Litter	Non Vegetative	Litter
14	Noxious Weed C	<i>Bromus tectorum</i>	Non Vegetative	Litter
15	Non Vegetative	Litter	Non Vegetative	Litter
16	Non Vegetative	Litter	Non Vegetative	Litter
17	Grass	<i>Bromus inermis</i>	Grass	<i>Bromus inermis</i>
18	Non Vegetative	Bare Ground	Non Vegetative	Bare Ground
19	Non Vegetative	Litter	Non Vegetative	Litter
20	Non Vegetative	Bare Ground	Non Vegetative	Bare Ground
21	Grass	<i>Agropyron cristatum</i>	Non Vegetative	Litter
22	Non Vegetative	Litter	Non Vegetative	Litter
23	Non Vegetative	Litter	Non Vegetative	Litter
24	Grass	<i>Bromus inermis</i>	Non Vegetative	Litter
25	Noxious Weed C	<i>Bromus tectorum</i>	Non Vegetative	Litter
26	Grass	<i>Bromus inermis</i>	Grass	<i>Bromus inermis</i>
27	Non Vegetative	Litter	Non Vegetative	Litter
28	Noxious Weed C	<i>Bromus tectorum</i>	Noxious Weed C	<i>Bromus tectorum</i>
29	Grass	<i>Bromus inermis</i>	Non Vegetative	Litter
30	Non Vegetative	Litter	Non Vegetative	Litter
31	Non Vegetative	Litter	Non Vegetative	Litter
32	Grass	<i>Bromus inermis</i>	Non Vegetative	Litter
33	Noxious Weed C	<i>Bromus tectorum</i>	Non Vegetative	Litter
34	Forb	<i>Salsola L</i>	Forb	<i>Salsola L</i>
35	Non Vegetative	Litter	Non Vegetative	Litter
36	Grass	<i>Bouteloua gracilis</i>	Grass	<i>Bouteloua gracilis</i>
37	Noxious Weed C	<i>Bromus tectorum</i>	Non Vegetative	Litter
38	Non Vegetative	Litter	Non Vegetative	Litter
39	Noxious Weed C	<i>Bromus tectorum</i>	Non Vegetative	Litter
40	Forb	<i>Kochia scoparia</i>	Non Vegetative	Litter
41	Non Vegetative	Litter	Non Vegetative	Litter
42	Non Vegetative	Bare Ground	Non Vegetative	Bare Ground
43	Non Vegetative	Litter	Non Vegetative	Litter
44	Non Vegetative	Litter	Non Vegetative	Litter
45	Non Vegetative	Bare Ground	Non Vegetative	Bare Ground
46	Non Vegetative	Bare Ground	Non Vegetative	Bare Ground
47	Grass	<i>Bouteloua gracilis</i>	Grass	<i>Bouteloua gracilis</i>
48	Grass	<i>Agropyron cristatum</i>	Grass	<i>Agropyron cristatum</i>
49	Grass	<i>Bouteloua gracilis</i>	Grass	<i>Bouteloua gracilis</i>
50	Noxious Weed C	<i>Bromus tectorum</i>	Noxious Weed C	<i>Bromus tectorum</i>