

CCRP OPERATING INC.



Location: COLORADO Slot: SLOT#07 SALT RANCH FEE 502-1807H (335'FSL & 1028'FEL,SEC.18)
 Field: WELD COUNTY (NAD 83/TN) Well: SALT RANCH FEE 502-1807H
 Facility: SEC.18-T11N-R64W Wellbore: SALT RANCH FEE 502-1807H PWB

Plot reference wellpath is SALT RANCH FEE 502-1807H PWP Rev.A.0
 True vertical depths are referenced to RIG (22) (RKB)
 Reference wellpath measured depths are referenced to RIG (22) (RKB)
 RIG (22) (RKB) to Mean Sea Level: 5626 feet
 Mean Sea Level to Mud line (At Slot: SLOT#07 SALT RANCH FEE 502-1807H (335'FSL & 1028'FEL,SEC.18)): 0 feet
 Offset wellpath MDs are referenced to each path's default MD datum
 Grid System: NAD83 / Lambert Colorado SP, Northern Zone (501), US feet
 North Reference: True north
 Scale: True distance
 Coordinates are in feet referenced to Slot
 Depths are in feet
 Created by: painsetr on 2020-09-23; Database: WellArchitectDB

Location Information

Facility Name				Grid East (US ft)	Grid North (US ft)	Latitude	Longitude
SEC.18-T11N-R64W				3253130.525	1577308.065	40°54'52.1670"N	104°35'2.9760"W
Slot	Local N (ft)	Local E (ft)	Grid East (US ft)	Grid North (US ft)	Latitude	Longitude	
SLOT#07 SALT RANCH FEE 502-1807H (335'FSL & 1028'FEL,SEC.18)	10.63	-52.24	3253078.180	1577318.152	40°54'52.2720"N	104°35'3.6564"W	
RIG (22) (RKB) to Mud line (At Slot: SLOT#07 SALT RANCH FEE 502-1807H (335'FSL & 1028'FEL,SEC.18))				5626ft			
Mean Sea Level to Mud line (At Slot: SLOT#07 SALT RANCH FEE 502-1807H (335'FSL & 1028'FEL,SEC.18))				0ft			
RIG (22) (RKB) to Mean Sea Level				5626ft			

Survey Program

Start MD (ft)	End MD (ft)	Tool	Model	Log Name/Comment	Wellbore
22.00	1950.00	BH NaviTrak (2019)	BH NaviTrak (2019) (Axial)		SALT RANCH FEE 502-1807H PWB
1950.00	18759.94	BH AutoTrak CurveXpress (2019)	BH AutoTrak CurveXpress (2019) (Short spacing)		SALT RANCH FEE 502-1807H PWB

Targets

Name	MD (ft)	TVD (ft)	Local N (ft)	Local E (ft)	Grid East (US ft)	Grid North (US ft)	Latitude	Longitude
SEC.07-T11N-R64W SECTION LINES	N/A	0.00	-1.09	89.83	3253168.01	1577317.99	40°54'52.2612"N	104°35'2.4864"W
SEC.18-T11N-R64W SECTION LINES	N/A	0.00	-1.09	89.83	3253168.01	1577317.99	40°54'52.2612"N	104°35'2.4864"W
SEC.07-T11N-R64W HARDLINES (300' SETBACKS)	N/A	8010.00	-1.09	89.83	3253168.01	1577317.99	40°54'52.2612"N	104°35'2.4864"W
SALT RANCH FEE 502-1807H BHL Rev-1(300'FNL & 2354'FEL,SEC.07)	18759.94	8208.00	9862.90	-1396.87	3251579.51	1587166.32	40°56'29.7240"N	104°35'21.8580"W
SALT RANCH FEE 502-1807H WP Rev-1 (0'FSL & 2550'FEL,SEC.07)	13792.71	8219.45	4901.20	-1171.66	3251855.95	1582207.10	40°55'40.6992"N	104°35'18.9204"W
SALT RANCH FEE 502-1807H LP ON PLAT(300'FSL & 2408'FEL,SEC.18)	N/A	8231.00	-71.74	-1388.59	3251690.37	1577232.08	40°54'51.5628"N	104°35'21.7428"W
SALT RANCH FEE 502-1807H LP Rev-1(300'FSL & 2433'FEL,SEC.18)	8813.87	8231.00	-71.74	-1413.59	3251665.38	1577231.82	40°54'51.5628"N	104°35'22.0684"W

Bottom Hole Location

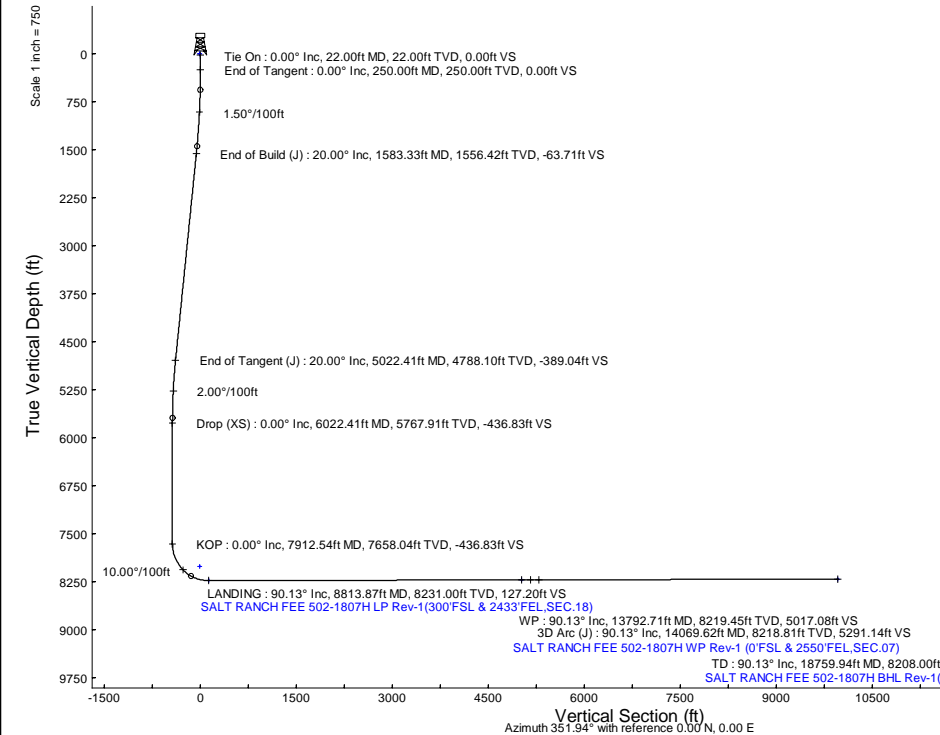
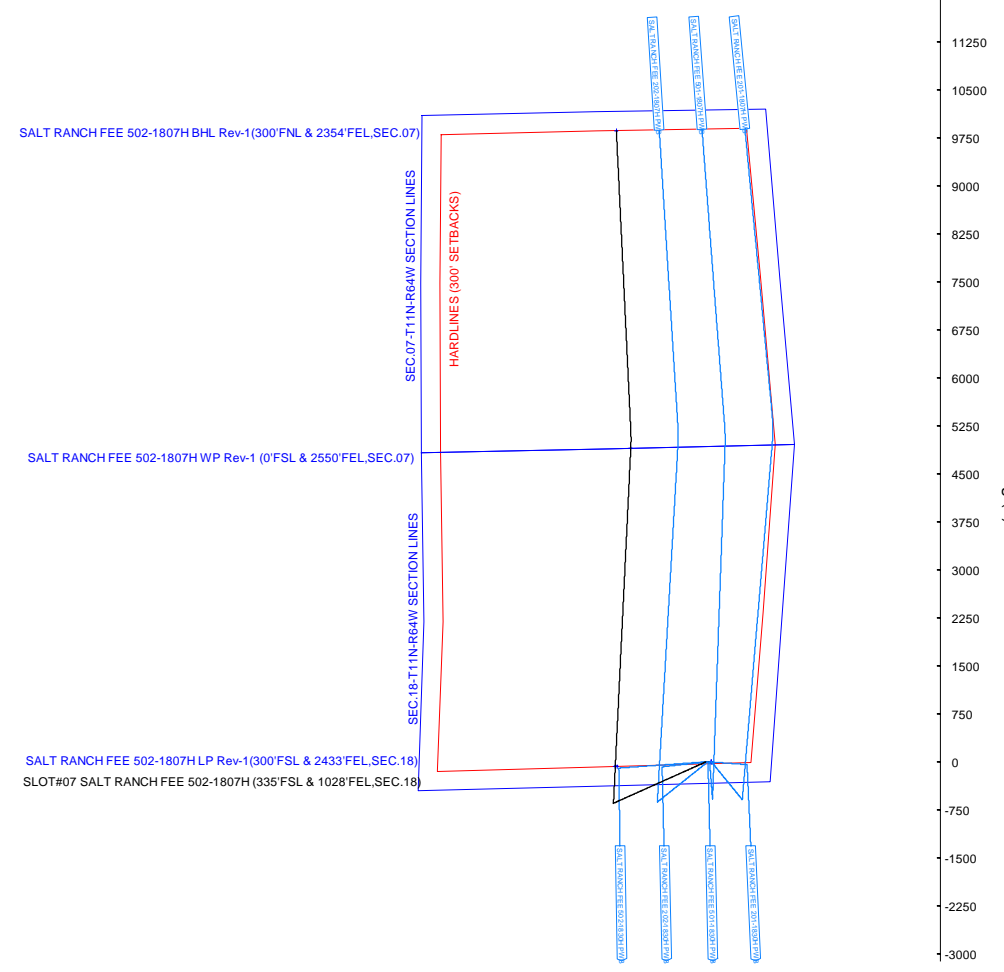
MD (ft)	Inc (°)	Az (°)	TVD (ft)	Local N (ft)	Local E (ft)	Grid East (US ft)	Grid North (US ft)	Latitude	Longitude
18759.94	90.132	357.247	8208.00	9862.90	-1396.87	3251579.51	1587166.32	40°56'29.7240"N	104°35'21.8580"W

Well Profile Data

Design Comment	MD (ft)	Inc (°)	Az (°)	TVD (ft)	Local N (ft)	Local E (ft)	DLS (°/100ft)	VS (ft)
Tie On	22.00	0.000	245.882	22.00	0.00	0.00	0.00	0.00
End of Tangent	250.00	0.000	245.882	250.00	0.00	0.00	0.00	0.00
End of Build (J)	1583.33	20.000	245.882	1556.42	-94.13	-210.25	1.50	-63.71
End of Tangent (J)	5022.41	20.000	245.882	4788.10	-574.75	-1283.81	0.00	-389.04
Drop (XS)	6022.41	0.000	2.785	5767.91	-645.35	-1441.49	2.00	-436.83
KOP	7912.54	0.000	2.785	7658.04	-645.35	-1441.49	0.00	-436.83
LANDING	8813.87	90.133	2.785	8231.00	-71.74	-1413.59	10.00	127.20
WP	13792.71	90.133	2.785	8219.45	4901.20	-1171.66	0.00	5017.08
3D Arc (J)	14069.62	90.132	357.247	8218.81	5178.01	-1171.58	2.00	5291.14
TD	18759.94	90.132	357.247	8208.00	9862.90	-1396.87	0.00	9961.33

Scale 1 inch = 750

Easting (ft) -12000 -10500 -9000 -7500 -6000 -4500 -3000 -1500 0 1500 3000



Scale 1 inch = 750

REFERENCE WELLPATH IDENTIFICATION			
Operator	CCRP OPERATING INC.	Well	SALT RANCH FEE 502-1807H
Field	WELD COUNTY (NAD 83/TN)	API/Legal	
Facility	SEC.18-T11N-R64W	Wellbore	SALT RANCH FEE 502-1807H PWB
Slot	SLOT#07 SALT RANCH FEE 502-1807H (335'FSL & 1028'FEL,SEC.18)		

REPORT SETUP INFORMATION			
Projection System	NAD83 / Lambert Colorado SP, Northern Zone (501), US feet	Software System	WellArchitect® 6.0
North Reference	True	User	Painsetr
Scale	1.000024	Report Generated	9/23/2020 at 7:03:31 AM
Convergence at slot	0.59° East	Database	WellArchitectDB

WELLPATH LOCATION						
	Local coordinates		Grid coordinates		Geographic coordinates	
	North[ft]	East[ft]	Easting[US ft]	Northing[US ft]	Latitude	Longitude
Slot Location	10.63	-52.24	3253078.18	1577318.15	40.9145200°	-104.5843490°
Facility Reference Pt			3253130.53	1577308.07	40.9144908°	-104.5841600°
Field Reference Pt			3242001.26	1607883.12	40.9987100°	-104.6233300°

WELLPATH DATUM			
Calculation method	Minimum curvature	RIG (22') (RKB) to Facility Vertical Datum	5626.00ft
Horizontal Reference Pt	Slot	RIG (22') (RKB) to Mean Sea Level	5626.00ft
Vertical Reference Pt	RIG (22') (RKB)	RIG (22') (RKB) to Mud Line at Slot (SLOT#07 SALT RANCH FEE 502-1807H (335'FSL & 1028'FEL,SEC.18))	5626.00ft
MD Reference Pt	RIG (22') (RKB)	Section Origin	N 0.00, E 0.00 ft
Field Vertical Reference	Mean Sea Level	Section Azimuth	351.94°

REFERENCE WELLPATH IDENTIFICATION			
Operator	CCRP OPERATING INC.	Well	SALT RANCH FEE 502-1807H
Field	WELD COUNTY (NAD 83/TN)	API/Legal	
Facility	SEC.18-T11N-R64W	Wellbore	SALT RANCH FEE 502-1807H PWB
Slot	SLOT#07 SALT RANCH FEE 502-1807H (335'FSL & 1028'FEL,SEC.18)		

WELLPATH DATA (198 stations) † = interpolated, ‡ = extrapolated station												
MD [ft]	Inclination [°]	Azimuth [°]	TVD [ft]	Vert Sect [ft]	North [ft]	East [ft]	Grid East [US ft]	Grid North [US ft]	Latitude	Longitude	DLS [°/100ft]	Comments
0.00†	0.000	245.882	0.00	0.00	0.00	0.00	3253078.18	1577318.15	40.9145200	-104.5843490	0.00	
22.00	0.000	245.882	22.00	0.00	0.00	0.00	3253078.18	1577318.15	40.9145200	-104.5843490	0.00	Tie On
122.00†	0.000	245.882	122.00	0.00	0.00	0.00	3253078.18	1577318.15	40.9145200	-104.5843490	0.00	
222.00†	0.000	245.882	222.00	0.00	0.00	0.00	3253078.18	1577318.15	40.9145200	-104.5843490	0.00	
250.00	0.000	245.882	250.00	0.00	0.00	0.00	3253078.18	1577318.15	40.9145200	-104.5843490	0.00	End of Tangent
322.00†	1.080	245.882	322.00	-0.19	-0.28	-0.62	3253077.56	1577317.87	40.9145192	-104.5843512	1.50	
422.00†	2.580	245.882	421.94	-1.07	-1.58	-3.53	3253074.66	1577316.53	40.9145157	-104.5843618	1.50	
522.00†	4.080	245.882	521.77	-2.68	-3.96	-8.84	3253069.39	1577314.11	40.9145091	-104.5843810	1.50	
622.00†	5.580	245.882	621.41	-5.01	-7.40	-16.52	3253061.74	1577310.59	40.9144997	-104.5844088	1.50	
722.00†	7.080	245.882	720.80	-8.06	-11.90	-26.58	3253051.72	1577305.98	40.9144873	-104.5844452	1.50	
822.00†	8.580	245.882	819.86	-11.82	-17.47	-39.02	3253039.34	1577300.28	40.9144721	-104.5844902	1.50	
922.00†	10.080	245.882	918.54	-16.31	-24.09	-53.81	3253024.62	1577293.51	40.9144539	-104.5845437	1.50	
1022.00†	11.580	245.882	1016.75	-21.50	-31.77	-70.96	3253007.55	1577285.65	40.9144328	-104.5846057	1.50	
1122.00†	13.080	245.882	1114.45	-27.41	-40.49	-90.45	3252988.15	1577276.72	40.9144089	-104.5846763	1.50	
1222.00†	14.580	245.882	1211.54	-34.02	-50.26	-112.27	3252966.43	1577266.73	40.9143820	-104.5847552	1.50	
1322.00†	16.080	245.882	1307.98	-41.33	-61.06	-136.40	3252942.42	1577255.68	40.9143524	-104.5848425	1.50	
1422.00†	17.580	245.882	1403.70	-49.34	-72.89	-162.82	3252916.11	1577243.58	40.9143199	-104.5849381	1.50	
1522.00†	19.080	245.882	1498.62	-58.04	-85.74	-191.53	3252887.54	1577230.43	40.9142847	-104.5850420	1.50	
1583.33	20.000	245.882	1556.42	-63.71	-94.13	-210.25	3252868.91	1577221.86	40.9142617	-104.5851097	1.50	End of Build (J)
1622.00†	20.000	245.882	1592.76	-67.37	-99.53	-222.32	3252856.89	1577216.33	40.9142468	-104.5851534	0.00	
1722.00†	20.000	245.882	1686.72	-76.83	-113.51	-253.54	3252825.82	1577202.03	40.9142085	-104.5852663	0.00	
1822.00†	20.000	245.882	1780.69	-86.29	-127.48	-284.75	3252794.75	1577187.73	40.9141701	-104.5853792	0.00	
1922.00†	20.000	245.882	1874.66	-95.75	-141.46	-315.97	3252763.68	1577173.44	40.9141317	-104.5854922	0.00	
2022.00†	20.000	245.882	1968.63	-105.21	-155.43	-347.19	3252732.61	1577159.14	40.9140934	-104.5856051	0.00	
2122.00†	20.000	245.882	2062.60	-114.67	-169.41	-378.40	3252701.54	1577144.84	40.9140550	-104.5857181	0.00	
2222.00†	20.000	245.882	2156.57	-124.13	-183.38	-409.62	3252670.47	1577130.55	40.9140167	-104.5858310	0.00	
2322.00†	20.000	245.882	2250.54	-133.59	-197.36	-440.83	3252639.40	1577116.25	40.9139783	-104.5859440	0.00	
2422.00†	20.000	245.882	2344.51	-143.05	-211.33	-472.05	3252608.33	1577101.95	40.9139400	-104.5860569	0.00	
2522.00†	20.000	245.882	2438.48	-152.51	-225.31	-503.27	3252577.25	1577087.65	40.9139016	-104.5861698	0.00	
2622.00†	20.000	245.882	2532.45	-161.97	-239.28	-534.48	3252546.18	1577073.36	40.9138632	-104.5862828	0.00	
2722.00†	20.000	245.882	2626.42	-171.43	-253.26	-565.70	3252515.11	1577059.06	40.9138249	-104.5863957	0.00	
2822.00†	20.000	245.882	2720.39	-180.89	-267.23	-596.92	3252484.04	1577044.76	40.9137865	-104.5865087	0.00	
2922.00†	20.000	245.882	2814.36	-190.35	-281.21	-628.13	3252452.97	1577030.46	40.9137482	-104.5866216	0.00	
3022.00†	20.000	245.882	2908.33	-199.81	-295.19	-659.35	3252421.90	1577016.17	40.9137098	-104.5867345	0.00	
3122.00†	20.000	245.882	3002.29	-209.27	-309.16	-690.57	3252390.83	1577001.87	40.9136714	-104.5868475	0.00	
3222.00†	20.000	245.882	3096.26	-218.73	-323.14	-721.78	3252359.76	1576987.57	40.9136331	-104.5869604	0.00	
3322.00†	20.000	245.882	3190.23	-228.19	-337.11	-753.00	3252328.69	1576973.28	40.9135947	-104.5870734	0.00	
3422.00†	20.000	245.882	3284.20	-237.65	-351.09	-784.22	3252297.61	1576958.98	40.9135564	-104.5871863	0.00	
3522.00†	20.000	245.882	3378.17	-247.11	-365.06	-815.43	3252266.54	1576944.68	40.9135180	-104.5872992	0.00	
3622.00†	20.000	245.882	3472.14	-256.57	-379.04	-846.65	3252235.47	1576930.38	40.9134796	-104.5874122	0.00	
3722.00†	20.000	245.882	3566.11	-266.03	-393.01	-877.86	3252204.40	1576916.09	40.9134413	-104.5875251	0.00	
3822.00†	20.000	245.882	3660.08	-275.49	-406.99	-909.08	3252173.33	1576901.79	40.9134029	-104.5876381	0.00	
3922.00†	20.000	245.882	3754.05	-284.95	-420.96	-940.30	3252142.26	1576887.49	40.9133646	-104.5877510	0.00	
4022.00†	20.000	245.882	3848.02	-294.41	-434.94	-971.51	3252111.19	1576873.19	40.9133262	-104.5878639	0.00	
4122.00†	20.000	245.882	3941.99	-303.87	-448.91	-1002.73	3252080.12	1576858.90	40.9132878	-104.5879769	0.00	

REFERENCE WELLPATH IDENTIFICATION			
Operator	CCRP OPERATING INC.	Well	SALT RANCH FEE 502-1807H
Field	WELD COUNTY (NAD 83/TN)	API/Legal	
Facility	SEC.18-T11N-R64W	Wellbore	SALT RANCH FEE 502-1807H PWB
Slot	SLOT#07 SALT RANCH FEE 502-1807H (335'FSL & 1028'FEL,SEC.18)		

WELLPATH DATA (198 stations) † = interpolated, ‡ = extrapolated station												
MD [ft]	Inclination [°]	Azimuth [°]	TVD [ft]	Vert Sect [ft]	North [ft]	East [ft]	Grid East [US ft]	Grid North [US ft]	Latitude	Longitude	DLS [°/100ft]	Comments
4222.00†	20.000	245.882	4035.96	-313.33	-462.89	-1033.95	3252049.04	1576844.60	40.9132495	-104.5880898	0.00	
4322.00†	20.000	245.882	4129.93	-322.79	-476.86	-1065.16	3252017.97	1576830.30	40.9132111	-104.5882028	0.00	
4422.00†	20.000	245.882	4223.89	-332.25	-490.84	-1096.38	3251986.90	1576816.01	40.9131727	-104.5883157	0.00	
4522.00†	20.000	245.882	4317.86	-341.71	-504.82	-1127.60	3251955.83	1576801.71	40.9131344	-104.5884286	0.00	
4622.00†	20.000	245.882	4411.83	-351.17	-518.79	-1158.81	3251924.76	1576787.41	40.9130960	-104.5885416	0.00	
4722.00†	20.000	245.882	4505.80	-360.63	-532.77	-1190.03	3251893.69	1576773.11	40.9130577	-104.5886545	0.00	
4822.00†	20.000	245.882	4599.77	-370.09	-546.74	-1221.25	3251862.62	1576758.82	40.9130193	-104.5887675	0.00	
4922.00†	20.000	245.882	4693.74	-379.55	-560.72	-1252.46	3251831.55	1576744.52	40.9129809	-104.5888804	0.00	
5022.00†	20.000	245.882	4787.71	-389.00	-574.69	-1283.68	3251800.48	1576730.22	40.9129426	-104.5889933	0.00	
5022.41	20.000	245.882	4788.10	-389.04	-574.75	-1283.81	3251800.35	1576730.16	40.9129424	-104.5889938	0.00	End of Tangent (J)
5122.00†	18.008	245.882	4882.25	-398.01	-588.00	-1313.40	3251770.89	1576716.61	40.9129060	-104.5891009	2.00	
5222.00†	16.008	245.882	4977.87	-406.10	-599.95	-1340.10	3251744.32	1576704.38	40.9128732	-104.5891975	2.00	
5322.00†	14.008	245.882	5074.46	-413.27	-610.53	-1363.74	3251720.79	1576693.56	40.9128442	-104.5892830	2.00	
5422.00†	12.008	245.882	5171.89	-419.49	-619.73	-1384.28	3251700.34	1576684.15	40.9128189	-104.5893573	2.00	
5522.00†	10.008	245.882	5270.04	-424.77	-627.53	-1401.71	3251683.00	1576676.17	40.9127975	-104.5894203	2.00	
5622.00†	8.008	245.882	5368.80	-429.10	-633.93	-1416.00	3251668.77	1576669.62	40.9127800	-104.5894720	2.00	
5722.00†	6.008	245.882	5468.05	-432.48	-638.91	-1427.13	3251657.69	1576664.52	40.9127663	-104.5895123	2.00	
5822.00†	4.008	245.882	5567.66	-434.89	-642.48	-1435.10	3251649.76	1576660.87	40.9127565	-104.5895412	2.00	
5922.00†	2.008	245.882	5667.52	-436.34	-644.63	-1439.89	3251644.99	1576658.68	40.9127506	-104.5895585	2.00	
6022.00†	0.008	245.882	5767.50	-436.83	-645.35	-1441.49	3251643.39	1576657.94	40.9127486	-104.5895643	2.00	
6022.41	0.000	2.785	5767.91	-436.83	-645.35	-1441.49	3251643.39	1576657.94	40.9127486	-104.5895643	2.00	Drop (XS)
6122.00†	0.000	2.785	5867.50	-436.83	-645.35	-1441.49	3251643.39	1576657.94	40.9127486	-104.5895643	0.00	
6222.00†	0.000	2.785	5967.50	-436.83	-645.35	-1441.49	3251643.39	1576657.94	40.9127486	-104.5895643	0.00	
6322.00†	0.000	2.785	6067.50	-436.83	-645.35	-1441.49	3251643.39	1576657.94	40.9127486	-104.5895643	0.00	
6422.00†	0.000	2.785	6167.50	-436.83	-645.35	-1441.49	3251643.39	1576657.94	40.9127486	-104.5895643	0.00	
6522.00†	0.000	2.785	6267.50	-436.83	-645.35	-1441.49	3251643.39	1576657.94	40.9127486	-104.5895643	0.00	
6622.00†	0.000	2.785	6367.50	-436.83	-645.35	-1441.49	3251643.39	1576657.94	40.9127486	-104.5895643	0.00	
6722.00†	0.000	2.785	6467.50	-436.83	-645.35	-1441.49	3251643.39	1576657.94	40.9127486	-104.5895643	0.00	
6822.00†	0.000	2.785	6567.50	-436.83	-645.35	-1441.49	3251643.39	1576657.94	40.9127486	-104.5895643	0.00	
6922.00†	0.000	2.785	6667.50	-436.83	-645.35	-1441.49	3251643.39	1576657.94	40.9127486	-104.5895643	0.00	
7022.00†	0.000	2.785	6767.50	-436.83	-645.35	-1441.49	3251643.39	1576657.94	40.9127486	-104.5895643	0.00	
7122.00†	0.000	2.785	6867.50	-436.83	-645.35	-1441.49	3251643.39	1576657.94	40.9127486	-104.5895643	0.00	
7222.00†	0.000	2.785	6967.50	-436.83	-645.35	-1441.49	3251643.39	1576657.94	40.9127486	-104.5895643	0.00	
7322.00†	0.000	2.785	7067.50	-436.83	-645.35	-1441.49	3251643.39	1576657.94	40.9127486	-104.5895643	0.00	
7422.00†	0.000	2.785	7167.50	-436.83	-645.35	-1441.49	3251643.39	1576657.94	40.9127486	-104.5895643	0.00	
7522.00†	0.000	2.785	7267.50	-436.83	-645.35	-1441.49	3251643.39	1576657.94	40.9127486	-104.5895643	0.00	
7622.00†	0.000	2.785	7367.50	-436.83	-645.35	-1441.49	3251643.39	1576657.94	40.9127486	-104.5895643	0.00	
7722.00†	0.000	2.785	7467.50	-436.83	-645.35	-1441.49	3251643.39	1576657.94	40.9127486	-104.5895643	0.00	
7822.00†	0.000	2.785	7567.50	-436.83	-645.35	-1441.49	3251643.39	1576657.94	40.9127486	-104.5895643	0.00	
7912.54	0.000	2.785	7658.04	-436.83	-645.35	-1441.49	3251643.39	1576657.94	40.9127486	-104.5895643	0.00	KOP
7922.00†	0.946	2.785	7667.50	-436.75	-645.27	-1441.49	3251643.40	1576658.02	40.9127488	-104.5895643	10.00	
8022.00†	10.946	2.785	7766.84	-426.59	-634.93	-1440.99	3251643.79	1576668.36	40.9127772	-104.5895625	10.00	
8122.00†	20.946	2.785	7862.87	-399.64	-607.53	-1439.65	3251644.84	1576695.78	40.9128524	-104.5895576	10.00	
8222.00†	30.946	2.785	7952.67	-356.73	-563.88	-1437.53	3251646.52	1576739.44	40.9129722	-104.5895500	10.00	
8322.00†	40.946	2.785	8033.53	-299.15	-505.33	-1434.68	3251648.76	1576798.03	40.9131329	-104.5895397	10.00	

REFERENCE WELLPATH IDENTIFICATION			
Operator	CCRP OPERATING INC.	Well	SALT RANCH FEE 502-1807H
Field	WELD COUNTY (NAD 83/TN)	API/Legal	
Facility	SEC.18-T11N-R64W	Wellbore	SALT RANCH FEE 502-1807H PWB
Slot	SLOT#07 SALT RANCH FEE 502-1807H (335'FSL & 1028'FEL,SEC.18)		

WELLPATH DATA (198 stations) † = interpolated, ‡ = extrapolated station												
MD [ft]	Inclination [°]	Azimuth [°]	TVD [ft]	Vert Sect [ft]	North [ft]	East [ft]	Grid East [US ft]	Grid North [US ft]	Latitude	Longitude	DLS [°/100ft]	Comments
8422.00†	50.946	2.785	8102.97	-228.65	-433.63	-1431.19	3251651.51	1576869.75	40.9133297	-104.5895271	10.00	
8522.00†	60.946	2.785	8158.90	-147.39	-350.99	-1427.17	3251654.67	1576952.44	40.9135566	-104.5895125	10.00	
8622.00†	70.946	2.785	8199.61	-57.82	-259.89	-1422.74	3251658.17	1577043.58	40.9138066	-104.5894965	10.00	
8722.00†	80.946	2.785	8223.86	37.34	-163.12	-1418.03	3251661.87	1577140.39	40.9140722	-104.5894795	10.00	
8813.87	90.133	2.785	8231.00†	127.20	-71.74	-1413.59	3251665.38	1577231.82	40.9143230	-104.5894635	10.00	LANDING
8822.00†	90.133	2.785	8230.98	135.18	-63.62	-1413.19	3251665.69	1577239.94	40.9143453	-104.5894620	0.00	
8922.00†	90.133	2.785	8230.75	233.39	36.26	-1408.33	3251669.51	1577339.87	40.9146194	-104.5894445	0.00	
9022.00†	90.133	2.785	8230.52	331.61	136.15	-1403.48	3251673.34	1577439.80	40.9148936	-104.5894269	0.00	
9122.00†	90.133	2.785	8230.29	429.82	236.03	-1398.62	3251677.17	1577539.73	40.9151677	-104.5894093	0.00	
9222.00†	90.133	2.785	8230.05	528.03	335.91	-1393.76	3251681.00	1577639.66	40.9154418	-104.5893918	0.00	
9322.00†	90.133	2.785	8229.82	626.25	435.79	-1388.90	3251684.82	1577739.59	40.9157160	-104.5893742	0.00	
9422.00†	90.133	2.785	8229.59	724.46	535.67	-1384.04	3251688.65	1577839.52	40.9159901	-104.5893567	0.00	
9522.00†	90.133	2.785	8229.36	822.67	635.55	-1379.18	3251692.48	1577939.44	40.9162643	-104.5893391	0.00	
9622.00†	90.133	2.785	8229.13	920.89	735.43	-1374.32	3251696.31	1578039.37	40.9165384	-104.5893215	0.00	
9722.00†	90.133	2.785	8228.89	1019.10	835.32	-1369.46	3251700.14	1578139.30	40.9168125	-104.5893040	0.00	
9822.00†	90.133	2.785	8228.66	1117.31	935.20	-1364.60	3251703.96	1578239.23	40.9170867	-104.5892864	0.00	
9922.00†	90.133	2.785	8228.43	1215.53	1035.08	-1359.74	3251707.79	1578339.16	40.9173608	-104.5892689	0.00	
10022.00†	90.133	2.785	8228.20	1313.74	1134.96	-1354.88	3251711.62	1578439.09	40.9176350	-104.5892513	0.00	
10122.00†	90.133	2.785	8227.97	1411.95	1234.84	-1350.03	3251715.45	1578539.02	40.9179091	-104.5892337	0.00	
10222.00†	90.133	2.785	8227.73	1510.17	1334.72	-1345.17	3251719.27	1578638.94	40.9181833	-104.5892162	0.00	
10322.00†	90.133	2.785	8227.50	1608.38	1434.61	-1340.31	3251723.10	1578738.87	40.9184574	-104.5891986	0.00	
10422.00†	90.133	2.785	8227.27	1706.59	1534.49	-1335.45	3251726.93	1578838.80	40.9187315	-104.5891810	0.00	
10522.00†	90.133	2.785	8227.04	1804.81	1634.37	-1330.59	3251730.76	1578938.73	40.9190057	-104.5891635	0.00	
10622.00†	90.133	2.785	8226.81	1903.02	1734.25	-1325.73	3251734.58	1579038.66	40.9192798	-104.5891459	0.00	
10722.00†	90.133	2.785	8226.57	2001.23	1834.13	-1320.87	3251738.41	1579138.59	40.9195540	-104.5891284	0.00	
10822.00†	90.133	2.785	8226.34	2099.45	1934.01	-1316.01	3251742.24	1579238.52	40.9198281	-104.5891108	0.00	
10922.00†	90.133	2.785	8226.11	2197.66	2033.90	-1311.15	3251746.07	1579338.44	40.9201022	-104.5890932	0.00	
11022.00†	90.133	2.785	8225.88	2295.87	2133.78	-1306.29	3251749.89	1579438.37	40.9203764	-104.5890757	0.00	
11122.00†	90.133	2.785	8225.65	2394.09	2233.66	-1301.43	3251753.72	1579538.30	40.9206505	-104.5890581	0.00	
11222.00†	90.133	2.785	8225.41	2492.30	2333.54	-1296.57	3251757.55	1579638.23	40.9209247	-104.5890405	0.00	
11322.00†	90.133	2.785	8225.18	2590.51	2433.42	-1291.72	3251761.38	1579738.16	40.9211988	-104.5890230	0.00	
11422.00†	90.133	2.785	8224.95	2688.73	2533.30	-1286.86	3251765.20	1579838.09	40.9214729	-104.5890054	0.00	
11522.00†	90.133	2.785	8224.72	2786.94	2633.19	-1282.00	3251769.03	1579938.02	40.9217471	-104.5889879	0.00	
11622.00†	90.133	2.785	8224.49	2885.15	2733.07	-1277.14	3251772.86	1580037.95	40.9220212	-104.5889703	0.00	
11722.00†	90.133	2.785	8224.25	2983.37	2832.95	-1272.28	3251776.69	1580137.87	40.9222954	-104.5889527	0.00	
11822.00†	90.133	2.785	8224.02	3081.58	2932.83	-1267.42	3251780.51	1580237.80	40.9225695	-104.5889352	0.00	
11922.00†	90.133	2.785	8223.79	3179.79	3032.71	-1262.56	3251784.34	1580337.73	40.9228436	-104.5889176	0.00	
12022.00†	90.133	2.785	8223.56	3278.01	3132.59	-1257.70	3251788.17	1580437.66	40.9231178	-104.5889000	0.00	
12122.00†	90.133	2.785	8223.33	3376.22	3232.47	-1252.84	3251792.00	1580537.59	40.9233919	-104.5888825	0.00	
12222.00†	90.133	2.785	8223.09	3474.43	3332.36	-1247.98	3251795.83	1580637.52	40.9236661	-104.5888649	0.00	
12322.00†	90.133	2.785	8222.86	3572.65	3432.24	-1243.12	3251799.65	1580737.45	40.9239402	-104.5888473	0.00	
12422.00†	90.133	2.785	8222.63	3670.86	3532.12	-1238.27	3251803.48	1580837.37	40.9242143	-104.5888298	0.00	
12522.00†	90.133	2.785	8222.40	3769.07	3632.00	-1233.41	3251807.31	1580937.30	40.9244885	-104.5888122	0.00	
12622.00†	90.133	2.785	8222.17	3867.29	3731.88	-1228.55	3251811.14	1581037.23	40.9247626	-104.5887946	0.00	
12722.00†	90.133	2.785	8221.93	3965.50	3831.76	-1223.69	3251814.96	1581137.16	40.9250368	-104.5887771	0.00	

REFERENCE WELLPATH IDENTIFICATION			
Operator	CCRP OPERATING INC.	Well	SALT RANCH FEE 502-1807H
Field	WELD COUNTY (NAD 83/TN)	API/Legal	
Facility	SEC.18-T11N-R64W	Wellbore	SALT RANCH FEE 502-1807H PWB
Slot	SLOT#07 SALT RANCH FEE 502-1807H (335'FSL & 1028'FEL,SEC.18)		

WELLPATH DATA (198 stations) † = interpolated, ‡ = extrapolated station												
MD [ft]	Inclination [°]	Azimuth [°]	TVD [ft]	Vert Sect [ft]	North [ft]	East [ft]	Grid East [US ft]	Grid North [US ft]	Latitude	Longitude	DLS [°/100ft]	Comments
12822.00†	90.133	2.785	8221.70	4063.71	3931.65	-1218.83	3251818.79	1581237.09	40.9253109	-104.5887595	0.00	
12922.00†	90.133	2.785	8221.47	4161.93	4031.53	-1213.97	3251822.62	1581337.02	40.9255850	-104.5887420	0.00	
13022.00†	90.133	2.785	8221.24	4260.14	4131.41	-1209.11	3251826.45	1581436.95	40.9258592	-104.5887244	0.00	
13122.00†	90.133	2.785	8221.01	4358.35	4231.29	-1204.25	3251830.27	1581536.87	40.9261333	-104.5887068	0.00	
13222.00†	90.133	2.785	8220.77	4456.57	4331.17	-1199.39	3251834.10	1581636.80	40.9264075	-104.5886893	0.00	
13322.00†	90.133	2.785	8220.54	4554.78	4431.05	-1194.53	3251837.93	1581736.73	40.9266816	-104.5886717	0.00	
13422.00†	90.133	2.785	8220.31	4652.99	4530.94	-1189.67	3251841.76	1581836.66	40.9269557	-104.5886541	0.00	
13522.00†	90.133	2.785	8220.08	4751.21	4630.82	-1184.81	3251845.58	1581936.59	40.9272299	-104.5886366	0.00	
13622.00†	90.133	2.785	8219.85	4849.42	4730.70	-1179.96	3251849.41	1582036.52	40.9275040	-104.5886190	0.00	
13722.00†	90.133	2.785	8219.61	4947.63	4830.58	-1175.10	3251853.24	1582136.45	40.9277782	-104.5886014	0.00	
13792.71	90.133	2.785	8219.45‡	5017.08	4901.20	-1171.66	3251855.95	1582207.10	40.9279720	-104.5885890	0.00	WP
13822.00†	90.133	2.199	8219.38	5045.87	4930.47	-1170.39	3251856.92	1582236.38	40.9280523	-104.5885844	2.00	
13922.00†	90.133	0.199	8219.15	5144.57	5030.44	-1168.29	3251857.98	1582336.37	40.9283267	-104.5885768	2.00	
14022.00†	90.132	358.199	8218.92	5243.76	5130.43	-1169.69	3251855.55	1582436.34	40.9286011	-104.5885819	2.00	
14069.62	90.132	357.247	8218.81	5291.14	5178.01	-1171.58	3251853.16	1582483.90	40.9287317	-104.5885888	2.00	3D Arc (J)
14122.00†	90.132	357.247	8218.69	5343.29	5230.33	-1174.10	3251850.11	1582536.19	40.9288753	-104.5885979	0.00	
14222.00†	90.132	357.247	8218.46	5442.86	5330.21	-1178.90	3251844.27	1582636.02	40.9291495	-104.5886153	0.00	
14322.00†	90.132	357.247	8218.23	5542.43	5430.10	-1183.71	3251838.44	1582735.85	40.9294236	-104.5886327	0.00	
14422.00†	90.132	357.247	8218.00	5642.00	5529.98	-1188.51	3251832.61	1582835.69	40.9296978	-104.5886501	0.00	
14522.00†	90.132	357.247	8217.77	5741.57	5629.87	-1193.31	3251826.77	1582935.52	40.9299719	-104.5886675	0.00	
14622.00†	90.132	357.247	8217.54	5841.14	5729.75	-1198.12	3251820.94	1583035.35	40.9302461	-104.5886849	0.00	
14722.00†	90.132	357.247	8217.31	5940.72	5829.63	-1202.92	3251815.10	1583135.18	40.9305202	-104.5887023	0.00	
14822.00†	90.132	357.247	8217.08	6040.29	5929.52	-1207.72	3251809.27	1583235.01	40.9307943	-104.5887197	0.00	
14922.00†	90.132	357.247	8216.84	6139.86	6029.40	-1212.52	3251803.43	1583334.84	40.9310685	-104.5887371	0.00	
15022.00†	90.132	357.247	8216.61	6239.43	6129.29	-1217.33	3251797.60	1583434.68	40.9313426	-104.5887545	0.00	
15122.00†	90.132	357.247	8216.38	6339.00	6229.17	-1222.13	3251791.76	1583534.51	40.9316168	-104.5887719	0.00	
15222.00†	90.132	357.247	8216.15	6438.57	6329.06	-1226.93	3251785.93	1583634.34	40.9318909	-104.5887893	0.00	
15322.00†	90.132	357.247	8215.92	6538.14	6428.94	-1231.74	3251780.10	1583734.17	40.9321651	-104.5888067	0.00	
15422.00†	90.132	357.247	8215.69	6637.71	6528.82	-1236.54	3251774.26	1583834.00	40.9324392	-104.5888241	0.00	
15522.00†	90.132	357.247	8215.46	6737.28	6628.71	-1241.34	3251768.43	1583933.83	40.9327134	-104.5888415	0.00	
15622.00†	90.132	357.247	8215.23	6836.85	6728.59	-1246.15	3251762.59	1584033.67	40.9329875	-104.5888589	0.00	
15722.00†	90.132	357.247	8215.00	6936.42	6828.48	-1250.95	3251756.76	1584133.50	40.9332617	-104.5888763	0.00	
15822.00†	90.132	357.247	8214.77	7036.00	6928.36	-1255.75	3251750.92	1584233.33	40.9335358	-104.5888937	0.00	
15922.00†	90.132	357.247	8214.54	7135.57	7028.25	-1260.56	3251745.09	1584333.16	40.9338099	-104.5889111	0.00	
16022.00†	90.132	357.247	8214.31	7235.14	7128.13	-1265.36	3251739.25	1584432.99	40.9340841	-104.5889285	0.00	
16122.00†	90.132	357.247	8214.08	7334.71	7228.01	-1270.16	3251733.42	1584532.82	40.9343582	-104.5889459	0.00	
16222.00†	90.132	357.247	8213.85	7434.28	7327.90	-1274.97	3251727.59	1584632.66	40.9346324	-104.5889633	0.00	
16322.00†	90.132	357.247	8213.62	7533.85	7427.78	-1279.77	3251721.75	1584732.49	40.9349065	-104.5889807	0.00	
16422.00†	90.132	357.247	8213.39	7633.42	7527.67	-1284.57	3251715.92	1584832.32	40.9351807	-104.5889981	0.00	
16522.00†	90.132	357.247	8213.16	7732.99	7627.55	-1289.38	3251710.08	1584932.15	40.9354548	-104.5890155	0.00	
16622.00†	90.132	357.247	8212.93	7832.56	7727.44	-1294.18	3251704.25	1585031.98	40.9357290	-104.5890329	0.00	
16722.00†	90.132	357.247	8212.70	7932.13	7827.32	-1298.98	3251698.41	1585131.81	40.9360031	-104.5890503	0.00	
16822.00†	90.132	357.247	8212.47	8031.70	7927.20	-1303.78	3251692.58	1585231.64	40.9362772	-104.5890677	0.00	
16922.00†	90.132	357.247	8212.24	8131.28	8027.09	-1308.59	3251686.75	1585331.48	40.9365514	-104.5890851	0.00	
17022.00†	90.132	357.247	8212.01	8230.85	8126.97	-1313.39	3251680.91	1585431.31	40.9368255	-104.5891025	0.00	

REFERENCE WELLPATH IDENTIFICATION			
Operator	CCRP OPERATING INC.	Well	SALT RANCH FEE 502-1807H
Field	WELD COUNTY (NAD 83/TN)	API/Legal	
Facility	SEC.18-T11N-R64W	Wellbore	SALT RANCH FEE 502-1807H PWB
Slot	SLOT#07 SALT RANCH FEE 502-1807H (335'FSL & 1028'FEL,SEC.18)		

WELLPATH DATA (198 stations) † = interpolated, ‡ = extrapolated station												
MD [ft]	Inclination [°]	Azimuth [°]	TVD [ft]	Vert Sect [ft]	North [ft]	East [ft]	Grid East [US ft]	Grid North [US ft]	Latitude	Longitude	DLS [°/100ft]	Comments
17122.00†	90.132	357.247	8211.77	8330.42	8226.86	-1318.19	3251675.08	1585531.14	40.9370997	-104.5891199	0.00	
17222.00†	90.132	357.247	8211.54	8429.99	8326.74	-1323.00	3251669.24	1585630.97	40.9373738	-104.5891373	0.00	
17322.00†	90.132	357.247	8211.31	8529.56	8426.63	-1327.80	3251663.41	1585730.80	40.9376480	-104.5891547	0.00	
17422.00†	90.132	357.247	8211.08	8629.13	8526.51	-1332.60	3251657.57	1585830.63	40.9379221	-104.5891721	0.00	
17522.00†	90.132	357.247	8210.85	8728.70	8626.39	-1337.41	3251651.74	1585930.47	40.9381963	-104.5891895	0.00	
17622.00†	90.132	357.247	8210.62	8828.27	8726.28	-1342.21	3251645.90	1586030.30	40.9384704	-104.5892069	0.00	
17722.00†	90.132	357.247	8210.39	8927.84	8826.16	-1347.01	3251640.07	1586130.13	40.9387445	-104.5892243	0.00	
17822.00†	90.132	357.247	8210.16	9027.41	8926.05	-1351.82	3251634.24	1586229.96	40.9390187	-104.5892418	0.00	
17922.00†	90.132	357.247	8209.93	9126.98	9025.93	-1356.62	3251628.40	1586329.79	40.9392928	-104.5892592	0.00	
18022.00†	90.132	357.247	8209.70	9226.56	9125.82	-1361.42	3251622.57	1586429.62	40.9395670	-104.5892766	0.00	
18122.00†	90.132	357.247	8209.47	9326.13	9225.70	-1366.23	3251616.73	1586529.46	40.9398411	-104.5892940	0.00	
18222.00†	90.132	357.247	8209.24	9425.70	9325.58	-1371.03	3251610.90	1586629.29	40.9401153	-104.5893114	0.00	
18322.00†	90.132	357.247	8209.01	9525.27	9425.47	-1375.83	3251605.06	1586729.12	40.9403894	-104.5893288	0.00	
18422.00†	90.132	357.247	8208.78	9624.84	9525.35	-1380.64	3251599.23	1586828.95	40.9406636	-104.5893462	0.00	
18522.00†	90.132	357.247	8208.55	9724.41	9625.24	-1385.44	3251593.39	1586928.78	40.9409377	-104.5893636	0.00	
18622.00†	90.132	357.247	8208.32	9823.98	9725.12	-1390.24	3251587.56	1587028.61	40.9412119	-104.5893810	0.00	
18722.00†	90.132	357.247	8208.09	9923.55	9825.01	-1395.05	3251581.73	1587128.44	40.9414860	-104.5893984	0.00	
18759.94	90.132	357.247	8208.00 [‡]	9961.33	9862.90	-1396.87	3251579.51	1587166.32	40.9415900	-104.5894050	0.00	TD

REFERENCE WELLPATH IDENTIFICATION			
Operator	CCRP OPERATING INC.	Well	SALT RANCH FEE 502-1807H
Field	WELD COUNTY (NAD 83/TN)	API/Legal	
Facility	SEC.18-T11N-R64W	Wellbore	SALT RANCH FEE 502-1807H PWB
Slot	SLOT#07 SALT RANCH FEE 502-1807H (335'FSL & 1028'FEL,SEC.18)		

TARGETS									
Name	MD [ft]	TVD [ft]	North [ft]	East [ft]	Grid East [US ft]	Grid North [US ft]	Latitude	Longitude	Shape
SEC.07-T11N-R64W SECTION LINES	N/A	0.00	-1.09	89.83	3253168.01	1577317.99	40.9145170	-104.5840240	polygon
2D Polygon: dimensions not calculated									
SEC.18-T11N-R64W SECTION LINES	N/A	0.00	-1.09	89.83	3253168.01	1577317.99	40.9145170	-104.5840240	polygon
2D Polygon: dimensions not calculated									
SEC.07/18-T11N-R64W HARDLINES (300' SETBACKS)	N/A	8010.00	-1.09	89.83	3253168.01	1577317.99	40.9145170	-104.5840240	polygon
2D Polygon: dimensions not calculated									
3) SALT RANCH FEE 502-1807H BHL Rev-1(300'FNL & 2354'FEL,SEC.07)	18759.94	8208.00	9862.90	-1396.87	3251579.51	1587166.32	40.9415900	-104.5894050	point
2) SALT RANCH FEE 502-1807H WP Rev-1 (0'FSL & 2550'FEL,SEC.07)	13792.71	8219.45	4901.20	-1171.66	3251855.95	1582207.10	40.9279720	-104.5885890	point
SALT RANCH FEE 502-1807H LP ON PLAT(300'FSL & 2408'FEL,SEC.18)	N/A	8231.00	-71.74	-1388.59	3251690.37	1577232.08	40.9143230	-104.5893730	point
1) SALT RANCH FEE 502-1807H LP Rev-1(300'FSL & 2433'FEL,SEC.18)	8813.87	8231.00	-71.74	-1413.59	3251665.38	1577231.82	40.9143230	-104.5894635	point

SURVEY PROGRAM -						
Start MD [ft]		End MD [ft]		Positional Uncertainty Model	Log Name/Comment	Wellbore
Ref Wellbore: SALT RANCH FEE 502-1807H PWB Ref Wellpath: SALT RANCH FEE 502-1807H PWP Rev-A.0						
22.00		1950.00		BH NaviTrak (2019) (Axial)		SALT RANCH FEE 502-1807H PWB
1950.00		18759.94		BH AutoTrak Curve/eXpress (2019) (Short spacing)		SALT RANCH FEE 502-1807H PWB

REFERENCE WELLPATH IDENTIFICATION			
Operator	CCRP OPERATING INC.	Well	SALT RANCH FEE 502-1807H
Field	WELD COUNTY (NAD 83/TN)	API/Legal	
Facility	SEC.18-T11N-R64W	Wellbore	SALT RANCH FEE 502-1807H PWB
Slot	SLOT#07 SALT RANCH FEE 502-1807H (335'FSL & 1028'FEL,SEC.18)		

DESIGN COMMENTS				
MD [ft]	Inclination [°]	Azimuth [°]	TVD [ft]	Comment
22.00	0.000	245.882	22.00	Tie On
250.00	0.000	245.882	250.00	End of Tangent
1583.33	20.000	245.882	1556.42	End of Build (J)
5022.41	20.000	245.882	4788.10	End of Tangent (J)
6022.41	0.000	2.785	5767.91	Drop (XS)
7912.54	0.000	2.785	7658.04	KOP
8813.87	90.133	2.785	8231.00	LANDING
13792.71	90.133	2.785	8219.45	WP
14069.62	90.132	357.247	8218.81	3D Arc (J)
18759.94	90.132	357.247	8208.00	TD



Closest Approach Clearance Summary Report

SALT RANCH FEE 502-1807H PWP Rev-A.0 - SPE WPTS
Stop Drilling HSE Risk (2017)

Page 1 of 2



REFERENCE WELLPATH IDENTIFICATION

Operator	CCRP OPERATING INC.	Well	SALT RANCH FEE 502-1807H
Field	WELD COUNTY (NAD 83/TN)	API/Legal	
Facility	SEC.18-T11N-R64W	Wellbore	SALT RANCH FEE 502-1807H PWB
Slot	SLOT#07 SALT RANCH FEE 502-1807H (335'FSL & 1028'FEL,SEC.18)		

REPORT SETUP INFORMATION

Projection System	NAD83 / Lambert Colorado SP, Northern Zone (501), US feet	Software System	WellArchitect® 6.0
North Reference	True	User	Painsetr
Scale	1.000024	Report Generated	9/23/2020 at 7:03:40 AM
Convergence at slot	0.59° East	Database	WellArchitectDB

WELLPATH LOCATION

	Local coordinates		Grid coordinates		Geographic coordinates	
	North[ft]	East[ft]	Easting[US ft]	Northing[US ft]	Latitude	Longitude
Slot Location	10.63	-52.24	3253078.18	1577318.15	40.9145200°	-104.5843490°
Facility Reference Pt			3253130.53	1577308.07	40.9144908°	-104.5841600°
Field Reference Pt			3242001.26	1607883.12	40.9987100°	-104.6233300°

WELLPATH DATUM

Calculation method	Minimum Curvature	RIG (22') (RKB) to Facility Vertical Datum	5626.00ft
Horizontal Reference Pt	Slot	RIG (22') (RKB) to Mean Sea Level	5626.00ft
Vertical Reference Pt	RIG (22') (RKB)	RIG (22') (RKB) to Mud Line at Slot (SLOT#07 SALT RANCH FEE 502-1807H (335'FSL & 1028'FEL,SEC.18))	5626.00ft
MD Reference Pt	RIG (22') (RKB)		
Field Vertical Reference	Mean Sea Level		

POSITIONAL UNCERTAINTY CALCULATION SETTINGS

Ellipse Confidence Limit	3.50 Std Dev	Ellipse Start MD	22.00ft	Surface Position Uncertainty	included
Declination	8.11° East of TN	Dip Angle	67.12°	Mag Field Strength	52436 nT
Slot Surface Uncertainty @1SD		Horizontal	0.100ft	Vertical	1.000ft
Facility Surface Uncertainty @1SD		Horizontal	8.200ft	Vertical	3.000ft

Positional Uncertainty values in the WELLPATH DATA table are the projection of the ellipsoid of uncertainty onto the vertical and horizontal planes



Closest Approach Clearance Summary Report

**SALT RANCH FEE 502-1807H PWP Rev-A.0 - SPE WPTS
Stop Drilling HSE Risk (2017)**

Page 2 of 2



REFERENCE WELLPATH IDENTIFICATION			
Operator	CCRP OPERATING INC.	Well	SALT RANCH FEE 502-1807H
Field	WELD COUNTY (NAD 83/TN)	API/Legal	
Facility	SEC.18-T11N-R64W	Wellbore	SALT RANCH FEE 502-1807H PWB
Slot	SLOT#07 SALT RANCH FEE 502-1807H (335'FSL & 1028'FEL,SEC.18)		

PROXIMITY-SCAN RULE			
Rule Name	SPE WPTS Stop Drilling HSE Risk (2017)	Rule Based On	Ratio
Plane of Rule	Closest Approach	Threshold Value	1.00
Include Casing & Hole Size	yes	Apply Cone of Safety	no

SURVEY PROGRAM -				
Ref Wellbore: SALT RANCH FEE 502-1807H PWB		Ref Wellpath: SALT RANCH FEE 502-1807H PWP Rev-A.0		
Start MD [ft]	End MD [ft]	Positional Uncertainty Model	Log Name/Comment	Wellbore
22.00	1950.00	BH NaviTrak (2019) (Axial)		SALT RANCH FEE 502-1807H PWB
1950.00	18759.94	BH AutoTrak Curve/eXpress (2019) (Short spacing)		SALT RANCH FEE 502-1807H PWB

CALCULATION RANGE & CUTOFF		
From: 22.00ft MD	To: 18759.94ft MD	C-C Cutoff: (none)

OFFSET WELL CLEARANCE SUMMARY (7 Offset Wellpaths selected) Ratios are calculated in Closest Approach plane													
Offset Facility	Offset Slot	Offset Well	Offset Wellbore	Offset Wellpath	Wellbore Status	C-C Clearance Distance			Rule Separation Ratio				
						Ref MD [ft]	Min C-C Clear Dist [ft]	Diverging from MD [ft]	Ref MD of Min Ratio [ft]	Min Ratio	Min Ratio Dvrg from [ft]	Rule Status	
SEC.18-T11N-R64W	SLOT#08 SALT RANCH FEE 502-1830H (335'FSL & 1043'FEL,SEC.18)	SALT RANCH FEE 502-1830H	SALT RANCH FEE 502-1830H PWB	SALT RANCH FEE 502-1830H PWP Rev-A.0	Planned	22.00	15.20	8502.06	8502.06	1.11	8502.06	PASS	
SEC.18-T11N-R64W	SLOT#06 SALT RANCH FEE 202-1830H (334'FSL & 1013'FEL,SEC.18)	SALT RANCH FEE 202-1830H	SALT RANCH FEE 202-1830H PWB	SALT RANCH FEE 202-1830H PWP Rev-A.0	Planned	580.06	14.26	8322.00	693.05	1.17	16822.00	PASS	
SEC.18-T11N-R64W	SLOT#05 SALT RANCH FEE 202-1807H (334'FSL & 998'FEL,SEC.18)	SALT RANCH FEE 202-1807H	SALT RANCH FEE 202-1807H PWB	SALT RANCH FEE 202-1807H PWP Rev-A.0	Planned	22.00	29.85	18728.62	18728.62	1.79	18728.62	PASS	
SEC.18-T11N-R64W	SLOT#03 SALT RANCH FEE 501-1807H (333'FSL & 968'FEL, SEC.18)	SALT RANCH FEE 501-1807H	SALT RANCH FEE 501-1807H PWB	SALT RANCH FEE 501-1807H PWP Rev-C.0	Planned	22.00	59.98	18722.00	18738.36	3.25	18738.36	PASS	
SEC.18-T11N-R64W	SLOT#01 SALT RANCH FEE 201-1807H (331'FSL & 938'FEL, SEC.18)	SALT RANCH FEE 201-1807H	SALT RANCH FEE 201-1807H PWB	SALT RANCH FEE 201-1807H PWP Rev-C.0	Planned	22.00	89.83	18722.00	18759.94	4.97	18759.94	PASS	
SEC.18-T11N-R64W	SLOT#04 SALT RANCH FEE 501-1830H (333'FSL & 983'FEL, SEC.18)	SALT RANCH FEE 501-1830H	SALT RANCH FEE 501-1830H PWB	SALT RANCH FEE 501-1830H PWP Rev-C.0	Planned	22.00	44.78	8622.00	428.81	6.39	8422.00	PASS	
SEC.18-T11N-R64W	SLOT#02 SALT RANCH FEE 201-1830H (332'FSL & 953'FEL, SEC.18)	SALT RANCH FEE 201-1830H	SALT RANCH FEE 201-1830H PWB	SALT RANCH FEE 201-1830H PWP Rev-C.0	Planned	22.00	74.91	8522.00	392.32	11.22	13792.71	PASS	

