

CCRP OPERATING INC.



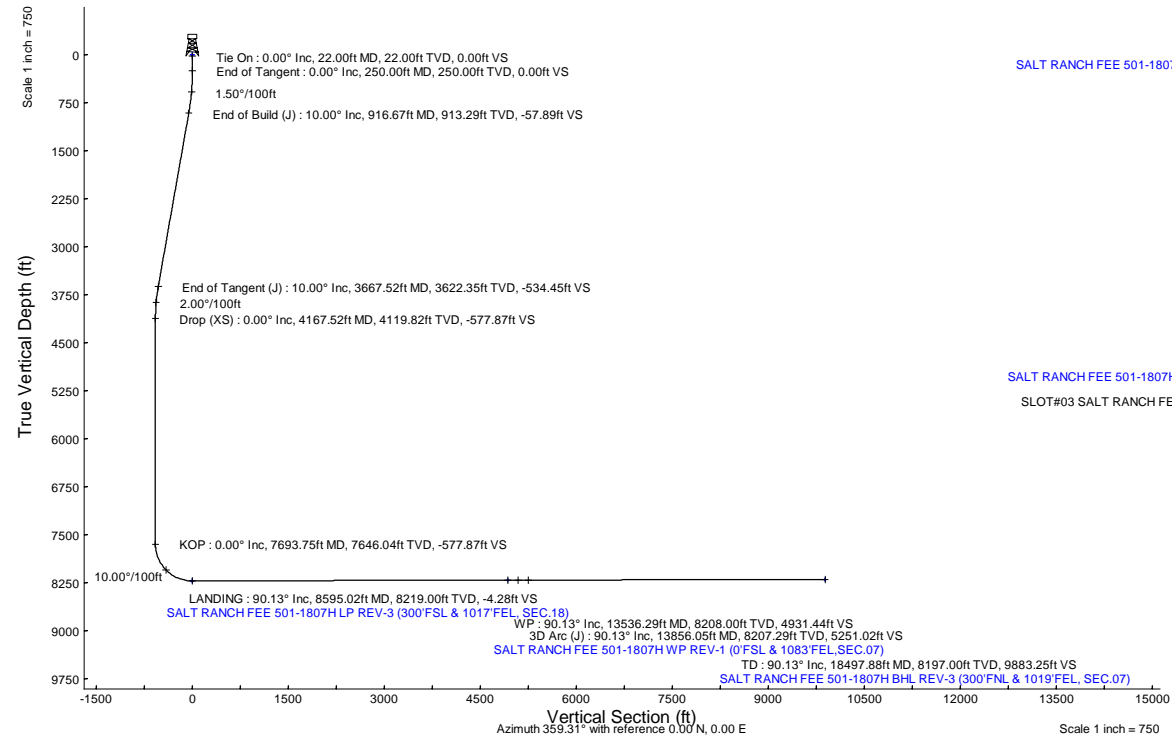
Location:	COLORADO	Slot:	SLOT#03 SALT RANCH FEE 501-1807H (333'FSL & 968'FEL, SEC.18)
Field:	WELD COUNTY (NAD 83/TN)	Well:	SALT RANCH FEE 501-1807H
Facility:	SEC.18-T11N-R64W	Wellbore:	SALT RANCH FEE 501-1807H PWB
Plot reference wellpath is SALT RANCH FEE 501-1807H PWP Rev.C.0		Grid System: NAD83 / Lambert Colorado SP, Northern Zone (501), US feet	
True vertical depths are referenced to RIG (22) (RKB)		North Reference: True north	
Reference wellpath measured depths are referenced to RIG (22) (RKB)		Scale: True distance	
RIG (22) (RKB) to Mean Sea Level: 5626 feet		Coordinates are in feet referenced to Slot	
Mean Sea Level to Mud line (At Slot: SLOT#03 SALT RANCH FEE 501-1807H (333'FSL & 968'FEL, SEC.18)): 0 feet		Depths are in feet	
Offset wellpath MDs are referenced to each path's default MD datum		Created by: painstr on 2020-09-23, Database: WellArchitectDB	

Location Information			
Facility Name		Grid East (US ft)	Grid North (US ft)
SEC.18-T11N-R64W		3253130.525	1577308.065
Latitude		Longitude	
40°54'52.1670"N		104°35'2.9760"W	
Slot		Local N (ft)	Local E (ft)
SLOT#03 SALT RANCH FEE 501-1807H (333'FSL & 968'FEL, SEC.18)		9.90	7.74
Grid East (US ft)		Grid North (US ft)	
3253138.162		1577318.043	
Latitude		Longitude	
40°54'52.2648"N		104°35'2.8752"W	
RIG (22) (RKB) to Mud line (At Slot: SLOT#03 SALT RANCH FEE 501-1807H (333'FSL & 968'FEL, SEC.18))		5626ft	
Mean Sea Level to Mud line (At Slot: SLOT#03 SALT RANCH FEE 501-1807H (333'FSL & 968'FEL, SEC.18))		0ft	
RIG (22) (RKB) to Mean Sea Level		5626ft	

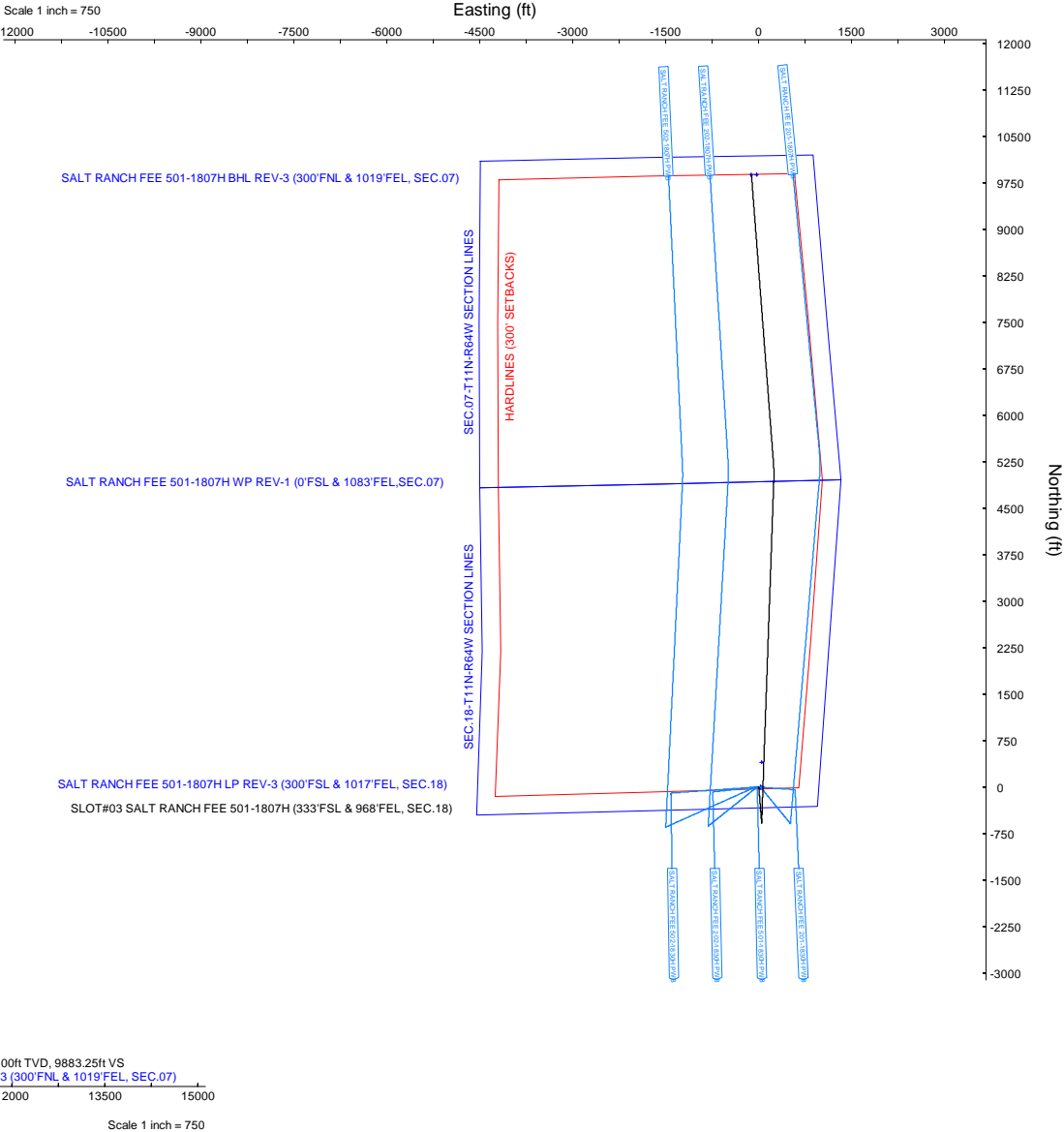
Survey Program			
Start MD (ft)	End MD (ft)	Tool	Model
22.00	195.00	BH NavTrak (2019)	BH NavTrak (2019) (Axial)
195.00	18498.57	BH AutoTrak CurveXpress (2019)	BH AutoTrak CurveXpress (2019) (Short spacing)
		Wellbore	
		SALT RANCH FEE 501-1807H PWB	
		SALT RANCH FEE 501-1807H PWB	

Targets							
Name	MD (ft)	TVD (ft)	Local N (ft)	Local E (ft)	Grid East (US ft)	Grid North (US ft)	Latitude
SEC.07-T11N-R64W SECTION LINES	N/A	0.00	-0.36	29.85	3253168.01	1577317.99	40°54'52.2612"N
SEC.18-T11N-R64W SECTION LINES	N/A	0.00	-0.36	29.85	3253168.01	1577317.99	40°54'52.2612"N
SALT RANCH FEE 501-1807H BHL REV-1 (300'FNL & 936'FEL, SEC.07)	N/A	8002.10	9883.99	-35.92	3253000.16	1587201.35	40°56'29.9256"N
SALT RANCH FEE 501-1807H LP REV-1 (735'FSL & 951'FEL, SEC.18)	N/A	8002.10	403.69	46.99	3253180.88	1577722.21	40°54'56.2536"N
SEC.07/18-T11N-R64W HARDLINES (300' SETBACKS)	N/A	8010.00	-0.36	29.85	3253168.01	1577317.99	40°54'52.2612"N
SALT RANCH FEE 501-1807H BHL REV-3 (300'FNL & 1019'FEL, SEC.07)	18497.88	8197.00	9882.54	-118.80	3252917.29	1587199.04	40°56'29.9112"N
SALT RANCH FEE 501-1807H BHL REV-2 (300'FNL & 936'FEL, SEC.07)	N/A	8198.10	9883.99	-35.92	3253000.16	1587201.35	40°56'29.9256"N
SALT RANCH FEE 501-1807H WP REV-1 (0'FSL & 1083'FEL, SEC.07)	13536.29	8208.00	4934.70	241.62	3253328.70	1582205.08	40°55'41.0232"N
SALT RANCH FEE 501-1807H LP REV-2 (300'FSL & 951'FEL, SEC.18)	N/A	8218.10	-3.47	46.98	3253185.18	1577315.05	40°54'52.2300"N
SALT RANCH FEE 501-1807H LP ON PLAT (300'FSL & 1037'FEL, SEC.18)	N/A	8219.00	-3.47	46.98	3253185.18	1577315.05	40°54'52.2300"N
SALT RANCH FEE 501-1807H LP REV-3 (300'FSL & 1017'FEL, SEC.18)	8595.02	8219.00	-3.47	66.98	3253205.18	1577315.26	40°54'52.2300"N

Bottom Hole Location							
MD (ft)	Inc (°)	Az (°)	TVD (ft)	Local N (ft)	Local E (ft)	Grid East (US ft)	Grid North (US ft)
18497.88	90.127	355.629	8197.00	9882.54	-118.80	3252917.29	1587199.04
						Latitude	
						Longitude	
						40°56'29.9112"N	
						104°35'4.2332"W	



Well Profile Data							
Design Comment	MD (ft)	Inc (°)	Az (°)	TVD (ft)	Local N (ft)	Local E (ft)	DLS (°/100ft)
Tie On	22.00	0.000	175.375	22.00	0.00	0.00	0.00
End of Tangent	250.00	0.000	175.375	250.00	0.00	0.00	0.00
End of Build (J)	916.67	10.000	175.375	913.29	-57.84	4.68	1.50
End of Tangent (J)	3667.52	10.000	175.375	3622.35	-533.97	43.19	0.00
Drop (XS)	4167.52	0.000	2.024	4119.82	-577.35	46.70	2.00
KOP	7693.75	0.000	2.024	7646.04	-577.35	46.70	0.00
LANDING	8595.02	90.128	2.024	8219.00	-3.47	66.98	10.00
WP	13536.29	90.128	2.024	8208.00	4934.70	241.52	0.00
3D Arc (J)	13856.05	90.127	355.629	8207.29	5254.22	234.97	2.00
TD	18497.88	90.127	355.629	8197.00	9882.54	-118.80	0.00



## REFERENCE WELLPATH IDENTIFICATION

Operator	CCRP OPERATING INC.	Well	SALT RANCH FEE 501-1807H
Field	WELD COUNTY (NAD 83/TN)	API/Legal	
Facility	SEC.18-T11N-R64W	Wellbore	SALT RANCH FEE 501-1807H PWB
Slot	SLOT#03 SALT RANCH FEE 501-1807H (333'FSL & 968'FEL, SEC.18)		

## REPORT SETUP INFORMATION

Projection System	NAD83 / Lambert Colorado SP, Northern Zone (501), US feet	Software System	WellArchitect® 6.0
North Reference	True	User	Painsetr
Scale	1.000024	Report Generated	9/23/2020 at 6:19:29 AM
Convergence at slot	0.59° East	Database	WellArchitectDB

## WELLPATH LOCATION

	Local coordinates		Grid coordinates		Geographic coordinates	
	North[ft]	East[ft]	Easting[US ft]	Northing[US ft]	Latitude	Longitude
Slot Location	9.90	7.74	3253138.16	1577318.04	40.9145180°	-104.5841320°
Facility Reference Pt			3253130.53	1577308.07	40.9144908°	-104.5841600°
Field Reference Pt			3242001.26	1607883.12	40.9987100°	-104.6233300°

## WELLPATH DATUM

Calculation method	Minimum curvature	RIG (22') (RKB) to Facility Vertical Datum	5626.00ft
Horizontal Reference Pt	Slot	RIG (22') (RKB) to Mean Sea Level	5626.00ft
Vertical Reference Pt	RIG (22') (RKB)	RIG (22') (RKB) to Mud Line at Slot (SLOT#03 SALT RANCH FEE 501-1807H (333'FSL & 968'FEL, SEC.18))	5626.00ft
MD Reference Pt	RIG (22') (RKB)	Section Origin	N 0.00, E 0.00 ft
Field Vertical Reference	Mean Sea Level	Section Azimuth	359.31°

# Planned Wellpath Report

## SALT RANCH FEE 501-1807H PWP Rev-C.0

Page 2 of 8

### REFERENCE WELLPATH IDENTIFICATION

Operator	CCRP OPERATING INC.	Well	SALT RANCH FEE 501-1807H
Field	WELD COUNTY (NAD 83/TN)	API/Legal	
Facility	SEC.18-T11N-R64W	Wellbore	SALT RANCH FEE 501-1807H PWB
Slot	SLOT#03 SALT RANCH FEE 501-1807H (333'FSL & 968'FEL, SEC.18)		

### WELLPATH DATA (195 stations) † = interpolated, ‡ = extrapolated station

MD [ft]	Inclination [°]	Azimuth [°]	TVD [ft]	Vert Sect [ft]	North [ft]	East [ft]	Grid East [US ft]	Grid North [US ft]	Latitude	Longitude	DLS [°/100ft]	Comments
0.00†	0.000	175.375	0.00	0.00	0.00	0.00	3253138.16	1577318.04	40.9145180	-104.5841320	0.00	
22.00	0.000	175.375	22.00	0.00	0.00	0.00	3253138.16	1577318.04	40.9145180	-104.5841320	0.00	Tie On
122.00†	0.000	175.375	122.00	0.00	0.00	0.00	3253138.16	1577318.04	40.9145180	-104.5841320	0.00	
222.00†	0.000	175.375	222.00	0.00	0.00	0.00	3253138.16	1577318.04	40.9145180	-104.5841320	0.00	
250.00	0.000	175.375	250.00	0.00	0.00	0.00	3253138.16	1577318.04	40.9145180	-104.5841320	0.00	End of Tangent
322.00†	1.080	175.375	322.00	-0.68	-0.68	0.05	3253138.22	1577317.37	40.9145161	-104.5841318	1.50	
422.00†	2.580	175.375	421.94	-3.86	-3.86	0.31	3253138.51	1577314.19	40.9145074	-104.5841309	1.50	
522.00†	4.080	175.375	521.77	-9.66	-9.65	0.78	3253139.04	1577308.40	40.9144915	-104.5841292	1.50	
622.00†	5.580	175.375	621.41	-18.06	-18.04	1.46	3253139.81	1577300.02	40.9144685	-104.5841267	1.50	
722.00†	7.080	175.375	720.80	-29.06	-29.03	2.35	3253140.81	1577289.04	40.9144383	-104.5841235	1.50	
822.00†	8.580	175.375	819.86	-42.65	-42.61	3.45	3253142.05	1577275.47	40.9144011	-104.5841195	1.50	
916.67	10.000	175.375	913.29	-57.89	-57.84	4.68	3253143.44	1577260.25	40.9143592	-104.5841151	1.50	End of Build (J)
922.00†	10.000	175.375	918.54	-58.82	-58.76	4.75	3253143.52	1577259.33	40.9143567	-104.5841148	0.00	
1022.00†	10.000	175.375	1017.02	-76.14	-76.07	6.15	3253145.10	1577242.04	40.9143092	-104.5841097	0.00	
1122.00†	10.000	175.375	1115.50	-93.46	-93.38	7.55	3253146.68	1577224.74	40.9142617	-104.5841047	0.00	
1222.00†	10.000	175.375	1213.98	-110.79	-110.69	8.95	3253148.26	1577207.45	40.9142142	-104.5840996	0.00	
1322.00†	10.000	175.375	1312.46	-128.11	-128.00	10.35	3253149.84	1577190.16	40.9141667	-104.5840945	0.00	
1422.00†	10.000	175.375	1410.94	-145.44	-145.31	11.75	3253151.42	1577172.86	40.9141192	-104.5840895	0.00	
1522.00†	10.000	175.375	1509.42	-162.76	-162.61	13.15	3253153.00	1577155.57	40.9140717	-104.5840844	0.00	
1622.00†	10.000	175.375	1607.90	-180.08	-179.92	14.55	3253154.57	1577138.28	40.9140242	-104.5840793	0.00	
1722.00†	10.000	175.375	1706.39	-197.41	-197.23	15.95	3253156.15	1577120.98	40.9139767	-104.5840743	0.00	
1822.00†	10.000	175.375	1804.87	-214.73	-214.54	17.35	3253157.73	1577103.69	40.9139292	-104.5840692	0.00	
1922.00†	10.000	175.375	1903.35	-232.06	-231.85	18.75	3253159.31	1577086.40	40.9138817	-104.5840641	0.00	
2022.00†	10.000	175.375	2001.83	-249.38	-249.16	20.15	3253160.89	1577069.10	40.9138342	-104.5840591	0.00	
2122.00†	10.000	175.375	2100.31	-266.70	-266.46	21.55	3253162.47	1577051.81	40.9137866	-104.5840540	0.00	
2222.00†	10.000	175.375	2198.79	-284.03	-283.77	22.95	3253164.05	1577034.52	40.9137391	-104.5840489	0.00	
2322.00†	10.000	175.375	2297.27	-301.35	-301.08	24.35	3253165.63	1577017.22	40.9136916	-104.5840439	0.00	
2422.00†	10.000	175.375	2395.75	-318.68	-318.39	25.75	3253167.20	1576999.93	40.9136441	-104.5840388	0.00	
2522.00†	10.000	175.375	2494.23	-336.00	-335.70	27.15	3253168.78	1576982.64	40.9135966	-104.5840338	0.00	
2622.00†	10.000	175.375	2592.71	-353.32	-353.01	28.55	3253170.36	1576965.34	40.9135491	-104.5840287	0.00	
2722.00†	10.000	175.375	2691.19	-370.65	-370.31	29.96	3253171.94	1576948.05	40.9135016	-104.5840236	0.00	
2822.00†	10.000	175.375	2789.67	-387.97	-387.62	31.36	3253173.52	1576930.76	40.9134541	-104.5840186	0.00	
2922.00†	10.000	175.375	2888.15	-405.29	-404.93	32.76	3253175.10	1576913.46	40.9134066	-104.5840135	0.00	
3022.00†	10.000	175.375	2986.64	-422.62	-422.24	34.16	3253176.68	1576896.17	40.9133591	-104.5840084	0.00	
3122.00†	10.000	175.375	3085.12	-439.94	-439.55	35.56	3253178.26	1576878.88	40.9133116	-104.5840034	0.00	
3222.00†	10.000	175.375	3183.60	-457.27	-456.85	36.96	3253179.83	1576861.58	40.9132641	-104.5839983	0.00	
3322.00†	10.000	175.375	3282.08	-474.59	-474.16	38.36	3253181.41	1576844.29	40.9132166	-104.5839932	0.00	
3422.00†	10.000	175.375	3380.56	-491.91	-491.47	39.76	3253182.99	1576827.00	40.9131691	-104.5839882	0.00	
3522.00†	10.000	175.375	3479.04	-509.24	-508.78	41.16	3253184.57	1576809.70	40.9131216	-104.5839831	0.00	
3622.00†	10.000	175.375	3577.52	-526.56	-526.09	42.56	3253186.15	1576792.41	40.9130741	-104.5839780	0.00	
3667.52	10.000	175.375	3622.35	-534.45	-533.97	43.19	3253186.87	1576784.54	40.9130524	-104.5839757	0.00	End of Tangent (J)
3722.00†	8.910	175.375	3676.09	-543.38	-542.89	43.91	3253187.68	1576775.63	40.9130280	-104.5839731	2.00	
3822.00†	6.910	175.375	3775.13	-557.11	-556.60	45.02	3253188.93	1576761.92	40.9129903	-104.5839691	2.00	
3922.00†	4.910	175.375	3874.59	-567.38	-566.87	45.85	3253189.87	1576751.67	40.9129621	-104.5839661	2.00	
4022.00†	2.910	175.375	3974.36	-574.18	-573.66	46.40	3253190.49	1576744.88	40.9129435	-104.5839641	2.00	

# Planned Wellpath Report

SALT RANCH FEE 501-1807H PWP Rev-C.0

Page 3 of 8

## REFERENCE WELLPATH IDENTIFICATION

Operator	CCRP OPERATING INC.	Well	SALT RANCH FEE 501-1807H
Field	WELD COUNTY (NAD 83/TN)	API/Legal	
Facility	SEC.18-T11N-R64W	Wellbore	SALT RANCH FEE 501-1807H PWB
Slot	SLOT#03 SALT RANCH FEE 501-1807H (333'FSL & 968'FEL, SEC.18)		

## WELLPATH DATA (195 stations) † = interpolated, ‡ = extrapolated station

MD [ft]	Inclination [°]	Azimuth [°]	TVD [ft]	Vert Sect [ft]	North [ft]	East [ft]	Grid East [US ft]	Grid North [US ft]	Latitude	Longitude	DLS [°/100ft]	Comments
4122.00†	0.910	175.375	4074.30	-577.51	-576.99	46.67	3253190.79	1576741.56	40.9129344	-104.5839631	2.00	
4167.52	0.000	2.024	4119.82	-577.87	-577.35	46.70	3253190.83	1576741.20	40.9129334	-104.5839630	2.00	Drop (XS)
4222.00†	0.000	2.024	4174.29	-577.87	-577.35	46.70	3253190.83	1576741.20	40.9129334	-104.5839630	0.00	
4322.00†	0.000	2.024	4274.29	-577.87	-577.35	46.70	3253190.83	1576741.20	40.9129334	-104.5839630	0.00	
4422.00†	0.000	2.024	4374.29	-577.87	-577.35	46.70	3253190.83	1576741.20	40.9129334	-104.5839630	0.00	
4522.00†	0.000	2.024	4474.29	-577.87	-577.35	46.70	3253190.83	1576741.20	40.9129334	-104.5839630	0.00	
4622.00†	0.000	2.024	4574.29	-577.87	-577.35	46.70	3253190.83	1576741.20	40.9129334	-104.5839630	0.00	
4722.00†	0.000	2.024	4674.29	-577.87	-577.35	46.70	3253190.83	1576741.20	40.9129334	-104.5839630	0.00	
4822.00†	0.000	2.024	4774.29	-577.87	-577.35	46.70	3253190.83	1576741.20	40.9129334	-104.5839630	0.00	
4922.00†	0.000	2.024	4874.29	-577.87	-577.35	46.70	3253190.83	1576741.20	40.9129334	-104.5839630	0.00	
5022.00†	0.000	2.024	4974.29	-577.87	-577.35	46.70	3253190.83	1576741.20	40.9129334	-104.5839630	0.00	
5122.00†	0.000	2.024	5074.29	-577.87	-577.35	46.70	3253190.83	1576741.20	40.9129334	-104.5839630	0.00	
5222.00†	0.000	2.024	5174.29	-577.87	-577.35	46.70	3253190.83	1576741.20	40.9129334	-104.5839630	0.00	
5322.00†	0.000	2.024	5274.29	-577.87	-577.35	46.70	3253190.83	1576741.20	40.9129334	-104.5839630	0.00	
5422.00†	0.000	2.024	5374.29	-577.87	-577.35	46.70	3253190.83	1576741.20	40.9129334	-104.5839630	0.00	
5522.00†	0.000	2.024	5474.29	-577.87	-577.35	46.70	3253190.83	1576741.20	40.9129334	-104.5839630	0.00	
5622.00†	0.000	2.024	5574.29	-577.87	-577.35	46.70	3253190.83	1576741.20	40.9129334	-104.5839630	0.00	
5722.00†	0.000	2.024	5674.29	-577.87	-577.35	46.70	3253190.83	1576741.20	40.9129334	-104.5839630	0.00	
5822.00†	0.000	2.024	5774.29	-577.87	-577.35	46.70	3253190.83	1576741.20	40.9129334	-104.5839630	0.00	
5922.00†	0.000	2.024	5874.29	-577.87	-577.35	46.70	3253190.83	1576741.20	40.9129334	-104.5839630	0.00	
6022.00†	0.000	2.024	5974.29	-577.87	-577.35	46.70	3253190.83	1576741.20	40.9129334	-104.5839630	0.00	
6122.00†	0.000	2.024	6074.29	-577.87	-577.35	46.70	3253190.83	1576741.20	40.9129334	-104.5839630	0.00	
6222.00†	0.000	2.024	6174.29	-577.87	-577.35	46.70	3253190.83	1576741.20	40.9129334	-104.5839630	0.00	
6322.00†	0.000	2.024	6274.29	-577.87	-577.35	46.70	3253190.83	1576741.20	40.9129334	-104.5839630	0.00	
6422.00†	0.000	2.024	6374.29	-577.87	-577.35	46.70	3253190.83	1576741.20	40.9129334	-104.5839630	0.00	
6522.00†	0.000	2.024	6474.29	-577.87	-577.35	46.70	3253190.83	1576741.20	40.9129334	-104.5839630	0.00	
6622.00†	0.000	2.024	6574.29	-577.87	-577.35	46.70	3253190.83	1576741.20	40.9129334	-104.5839630	0.00	
6722.00†	0.000	2.024	6674.29	-577.87	-577.35	46.70	3253190.83	1576741.20	40.9129334	-104.5839630	0.00	
6822.00†	0.000	2.024	6774.29	-577.87	-577.35	46.70	3253190.83	1576741.20	40.9129334	-104.5839630	0.00	
6922.00†	0.000	2.024	6874.29	-577.87	-577.35	46.70	3253190.83	1576741.20	40.9129334	-104.5839630	0.00	
7022.00†	0.000	2.024	6974.29	-577.87	-577.35	46.70	3253190.83	1576741.20	40.9129334	-104.5839630	0.00	
7122.00†	0.000	2.024	7074.29	-577.87	-577.35	46.70	3253190.83	1576741.20	40.9129334	-104.5839630	0.00	
7222.00†	0.000	2.024	7174.29	-577.87	-577.35	46.70	3253190.83	1576741.20	40.9129334	-104.5839630	0.00	
7322.00†	0.000	2.024	7274.29	-577.87	-577.35	46.70	3253190.83	1576741.20	40.9129334	-104.5839630	0.00	
7422.00†	0.000	2.024	7374.29	-577.87	-577.35	46.70	3253190.83	1576741.20	40.9129334	-104.5839630	0.00	
7522.00†	0.000	2.024	7474.29	-577.87	-577.35	46.70	3253190.83	1576741.20	40.9129334	-104.5839630	0.00	
7622.00†	0.000	2.024	7574.29	-577.87	-577.35	46.70	3253190.83	1576741.20	40.9129334	-104.5839630	0.00	
7693.75	0.000	2.024	7646.04	-577.87	-577.35	46.70	3253190.83	1576741.20	40.9129334	-104.5839630	0.00	KOP
7722.00†	2.825	2.024	7674.28	-577.17	-576.65	46.73	3253190.84	1576741.89	40.9129353	-104.5839629	10.00	
7822.00†	12.825	2.024	7773.23	-563.59	-563.06	47.21	3253191.18	1576755.48	40.9129726	-104.5839612	10.00	
7922.00†	22.825	2.024	7868.30	-533.05	-532.51	48.29	3253191.95	1576786.05	40.9130564	-104.5839573	10.00	
8022.00†	32.825	2.024	7956.63	-486.49	-485.92	49.93	3253193.11	1576832.65	40.9131843	-104.5839513	10.00	
8122.00†	42.825	2.024	8035.52	-425.31	-424.71	52.10	3253194.64	1576893.88	40.9133523	-104.5839435	10.00	
8222.00†	52.825	2.024	8102.57	-351.37	-350.74	54.71	3253196.49	1576967.88	40.9135553	-104.5839341	10.00	
8322.00†	62.825	2.024	8155.76	-266.93	-266.26	57.70	3253198.61	1577052.39	40.9137872	-104.5839232	10.00	

# Planned Wellpath Report

## SALT RANCH FEE 501-1807H PWP Rev-C.0

Page 4 of 8

### REFERENCE WELLPATH IDENTIFICATION

Operator	CCRP OPERATING INC.	Well	SALT RANCH FEE 501-1807H
Field	WELD COUNTY (NAD 83/TN)	API/Legal	
Facility	SEC.18-T11N-R64W	Wellbore	SALT RANCH FEE 501-1807H PWB
Slot	SLOT#03 SALT RANCH FEE 501-1807H (333'FSL & 968'FEL, SEC.18)		

### WELLPATH DATA (195 stations) † = interpolated, ‡ = extrapolated station

MD [ft]	Inclination [°]	Azimuth [°]	TVD [ft]	Vert Sect [ft]	North [ft]	East [ft]	Grid East [US ft]	Grid North [US ft]	Latitude	Longitude	DLS [°/100ft]	Comments
8422.00†	72.825	2.024	8193.45	-174.55	-173.83	60.96	3253200.92	1577144.85	40.9140409	-104.5839114	10.00	
8522.00†	82.825	2.024	8214.51	-77.03	-76.27	64.41	3253203.36	1577242.45	40.9143087	-104.5838990	10.00	
8595.02	90.128	2.024	8219.00†	-4.28	-3.47	66.98	3253205.18	1577315.26	40.9145085	-104.5838896	10.00	LANDING
8622.00†	90.128	2.024	8218.94	22.67	23.49	67.94	3253205.86	1577342.23	40.9145825	-104.5838862	0.00	
8722.00†	90.128	2.024	8218.72	122.55	123.42	71.47	3253208.35	1577442.20	40.9148568	-104.5838734	0.00	
8822.00†	90.128	2.024	8218.49	222.44	223.36	75.00	3253210.85	1577542.17	40.9151310	-104.5838606	0.00	
8922.00†	90.128	2.024	8218.27	322.33	323.30	78.53	3253213.35	1577642.14	40.9154053	-104.5838479	0.00	
9022.00†	90.128	2.024	8218.05	422.22	423.23	82.07	3253215.85	1577742.11	40.9156796	-104.5838351	0.00	
9122.00†	90.128	2.024	8217.83	522.11	523.17	85.60	3253218.35	1577842.08	40.9159539	-104.5838223	0.00	
9222.00†	90.128	2.024	8217.60	621.99	623.11	89.13	3253220.85	1577942.05	40.9162282	-104.5838095	0.00	
9322.00†	90.128	2.024	8217.38	721.88	723.05	92.66	3253223.35	1578042.02	40.9165025	-104.5837967	0.00	
9422.00†	90.128	2.024	8217.16	821.77	822.98	96.19	3253225.85	1578141.99	40.9167768	-104.5837839	0.00	
9522.00†	90.128	2.024	8216.94	921.66	922.92	99.73	3253228.35	1578241.96	40.9170511	-104.5837712	0.00	
9622.00†	90.128	2.024	8216.71	1021.54	1022.86	103.26	3253230.85	1578341.94	40.9173254	-104.5837584	0.00	
9722.00†	90.128	2.024	8216.49	1121.43	1122.80	106.79	3253233.35	1578441.91	40.9175997	-104.5837456	0.00	
9822.00†	90.128	2.024	8216.27	1221.32	1222.73	110.32	3253235.85	1578541.88	40.9178740	-104.5837328	0.00	
9922.00†	90.128	2.024	8216.05	1321.21	1322.67	113.86	3253238.35	1578641.85	40.9181483	-104.5837200	0.00	
10022.00†	90.128	2.024	8215.82	1421.09	1422.61	117.39	3253240.85	1578741.82	40.9184226	-104.5837073	0.00	
10122.00†	90.128	2.024	8215.60	1520.98	1522.55	120.92	3253243.35	1578841.79	40.9186969	-104.5836945	0.00	
10222.00†	90.128	2.024	8215.38	1620.87	1622.48	124.45	3253245.85	1578941.76	40.9189711	-104.5836817	0.00	
10322.00†	90.128	2.024	8215.16	1720.76	1722.42	127.98	3253248.35	1579041.73	40.9192454	-104.5836689	0.00	
10422.00†	90.128	2.024	8214.93	1820.64	1822.36	131.52	3253250.85	1579141.70	40.9195197	-104.5836561	0.00	
10522.00†	90.128	2.024	8214.71	1920.53	1922.29	135.05	3253253.35	1579241.67	40.9197940	-104.5836433	0.00	
10622.00†	90.128	2.024	8214.49	2020.42	2022.23	138.58	3253255.85	1579341.64	40.9200683	-104.5836306	0.00	
10722.00†	90.128	2.024	8214.27	2120.31	2122.17	142.11	3253258.35	1579441.61	40.9203426	-104.5836178	0.00	
10822.00†	90.128	2.024	8214.04	2220.20	2222.11	145.64	3253260.85	1579541.58	40.9206169	-104.5836050	0.00	
10922.00†	90.128	2.024	8213.82	2320.08	2322.04	149.18	3253263.35	1579641.55	40.9208912	-104.5835922	0.00	
11022.00†	90.128	2.024	8213.60	2419.97	2421.98	152.71	3253265.85	1579741.53	40.9211655	-104.5835794	0.00	
11122.00†	90.128	2.024	8213.37	2519.86	2521.92	156.24	3253268.35	1579841.50	40.9214398	-104.5835667	0.00	
11222.00†	90.128	2.024	8213.15	2619.75	2621.86	159.77	3253270.85	1579941.47	40.9217141	-104.5835539	0.00	
11322.00†	90.128	2.024	8212.93	2719.63	2721.79	163.31	3253273.35	1580041.44	40.9219884	-104.5835411	0.00	
11422.00†	90.128	2.024	8212.71	2819.52	2821.73	166.84	3253275.85	1580141.41	40.9222627	-104.5835283	0.00	
11522.00†	90.128	2.024	8212.48	2919.41	2921.67	170.37	3253278.35	1580241.38	40.9225370	-104.5835155	0.00	
11622.00†	90.128	2.024	8212.26	3019.30	3021.61	173.90	3253280.85	1580341.35	40.9228112	-104.5835027	0.00	
11722.00†	90.128	2.024	8212.04	3119.18	3121.54	177.43	3253283.35	1580441.32	40.9230855	-104.5834900	0.00	
11822.00†	90.128	2.024	8211.82	3219.07	3221.48	180.97	3253285.85	1580541.29	40.9233598	-104.5834772	0.00	
11922.00†	90.128	2.024	8211.59	3318.96	3321.42	184.50	3253288.35	1580641.26	40.9236341	-104.5834644	0.00	
12022.00†	90.128	2.024	8211.37	3418.85	3421.36	188.03	3253290.85	1580741.23	40.9239084	-104.5834516	0.00	
12122.00†	90.128	2.024	8211.15	3518.74	3521.29	191.56	3253293.35	1580841.20	40.9241827	-104.5834388	0.00	
12222.00†	90.128	2.024	8210.93	3618.62	3621.23	195.09	3253295.85	1580941.17	40.9244570	-104.5834260	0.00	
12322.00†	90.128	2.024	8210.70	3718.51	3721.17	198.63	3253298.35	1581041.14	40.9247313	-104.5834132	0.00	
12422.00†	90.128	2.024	8210.48	3818.40	3821.10	202.16	3253300.85	1581141.12	40.9250056	-104.5834005	0.00	
12522.00†	90.128	2.024	8210.26	3918.29	3921.04	205.69	3253303.35	1581241.09	40.9252799	-104.5833877	0.00	
12622.00†	90.128	2.024	8210.04	4018.17	4020.98	209.22	3253305.85	1581341.06	40.9255542	-104.5833749	0.00	
12722.00†	90.128	2.024	8209.81	4118.06	4120.92	212.75	3253308.35	1581441.03	40.9258285	-104.5833621	0.00	



# Planned Wellpath Report

## SALT RANCH FEE 501-1807H PWP Rev-C.0

Page 5 of 8

### REFERENCE WELLPATH IDENTIFICATION

Operator	CCRP OPERATING INC.	Well	SALT RANCH FEE 501-1807H
Field	WELD COUNTY (NAD 83/TN)	API/Legal	
Facility	SEC.18-T11N-R64W	Wellbore	SALT RANCH FEE 501-1807H PWB
Slot	SLOT#03 SALT RANCH FEE 501-1807H (333'FSL & 968'FEL, SEC.18)		

### WELLPATH DATA (195 stations) † = interpolated, ‡ = extrapolated station

MD [ft]	Inclination [°]	Azimuth [°]	TVD [ft]	Vert Sect [ft]	North [ft]	East [ft]	Grid East [US ft]	Grid North [US ft]	Latitude	Longitude	DLS [°/100ft]	Comments
12822.00†	90.128	2.024	8209.59	4217.95	4220.85	216.29	3253310.85	1581541.00	40.9261028	-104.5833493	0.00	
12922.00†	90.128	2.024	8209.37	4317.84	4320.79	219.82	3253313.35	1581640.97	40.9263770	-104.5833365	0.00	
13022.00†	90.128	2.024	8209.14	4417.72	4420.73	223.35	3253315.85	1581740.94	40.9266513	-104.5833238	0.00	
13122.00†	90.128	2.024	8208.92	4517.61	4520.67	226.88	3253318.35	1581840.91	40.9269256	-104.5833110	0.00	
13222.00†	90.128	2.024	8208.70	4617.50	4620.60	230.42	3253320.85	1581940.88	40.9271999	-104.5832982	0.00	
13322.00†	90.128	2.024	8208.48	4717.39	4720.54	233.95	3253323.35	1582040.85	40.9274742	-104.5832854	0.00	
13422.00†	90.128	2.024	8208.25	4817.28	4820.48	237.48	3253325.85	1582140.82	40.9277485	-104.5832726	0.00	
13522.00†	90.128	2.024	8208.03	4917.16	4920.42	241.01	3253328.35	1582240.79	40.9280228	-104.5832598	0.00	
13536.29	90.128	2.024	8208.00 <sup>‡</sup>	4931.44	4934.70	241.52	3253328.70	1582255.08	40.9280620	-104.5832580	0.00	WP
13622.00†	90.128	0.310	8207.81	5017.10	5020.39	243.26	3253329.56	1582340.78	40.9282972	-104.5832517	2.00	
13722.00†	90.127	358.310	8207.59	5117.09	5120.37	242.06	3253327.33	1582440.75	40.9285716	-104.5832560	2.00	
13822.00†	90.127	356.310	8207.36	5217.03	5220.26	237.37	3253321.60	1582540.59	40.9288458	-104.5832730	2.00	
13856.05	90.127	355.629	8207.29	5251.02	5254.22	234.97	3253318.86	1582574.53	40.9289390	-104.5832817	2.00	3D Arc (J)
13922.00†	90.127	355.629	8207.14	5316.83	5319.98	229.95	3253313.15	1582640.23	40.9291195	-104.5832999	0.00	
14022.00†	90.127	355.629	8206.92	5416.63	5419.69	222.32	3253304.50	1582739.86	40.9293931	-104.5833274	0.00	
14122.00†	90.127	355.629	8206.70	5516.42	5519.40	214.70	3253295.85	1582839.49	40.9296668	-104.5833550	0.00	
14222.00†	90.127	355.629	8206.48	5616.21	5619.11	207.08	3253287.20	1582939.11	40.9299405	-104.5833826	0.00	
14322.00†	90.127	355.629	8206.26	5716.01	5718.82	199.46	3253278.55	1583038.74	40.9302141	-104.5834102	0.00	
14422.00†	90.127	355.629	8206.03	5815.80	5818.53	191.84	3253269.90	1583138.37	40.9304878	-104.5834377	0.00	
14522.00†	90.127	355.629	8205.81	5915.59	5918.23	184.22	3253261.25	1583237.99	40.9307615	-104.5834653	0.00	
14622.00†	90.127	355.629	8205.59	6015.39	6017.94	176.60	3253252.60	1583337.62	40.9310351	-104.5834929	0.00	
14722.00†	90.127	355.629	8205.37	6115.18	6117.65	168.97	3253243.95	1583437.25	40.9313088	-104.5835205	0.00	
14822.00†	90.127	355.629	8205.15	6214.97	6217.36	161.35	3253235.29	1583536.87	40.9315824	-104.5835481	0.00	
14922.00†	90.127	355.629	8204.93	6314.77	6317.07	153.73	3253226.64	1583636.50	40.9318561	-104.5835756	0.00	
15022.00†	90.127	355.629	8204.70	6414.56	6416.78	146.11	3253217.99	1583736.13	40.9321298	-104.5836032	0.00	
15122.00†	90.127	355.629	8204.48	6514.35	6516.49	138.49	3253209.34	1583835.76	40.9324034	-104.5836308	0.00	
15222.00†	90.127	355.629	8204.26	6614.15	6616.20	130.87	3253200.69	1583935.38	40.9326771	-104.5836584	0.00	
15322.00†	90.127	355.629	8204.04	6713.94	6715.91	123.25	3253192.04	1584035.01	40.9329508	-104.5836860	0.00	
15422.00†	90.127	355.629	8203.82	6813.73	6815.61	115.62	3253183.39	1584134.64	40.9332244	-104.5837135	0.00	
15522.00†	90.127	355.629	8203.60	6913.53	6915.32	108.00	3253174.74	1584234.26	40.9334981	-104.5837411	0.00	
15622.00†	90.127	355.629	8203.37	7013.32	7015.03	100.38	3253166.09	1584333.89	40.9337718	-104.5837687	0.00	
15722.00†	90.127	355.629	8203.15	7113.11	7114.74	92.76	3253157.44	1584433.52	40.9340454	-104.5837963	0.00	
15822.00†	90.127	355.629	8202.93	7212.91	7214.45	85.14	3253148.78	1584533.15	40.9343191	-104.5838239	0.00	
15922.00†	90.127	355.629	8202.71	7312.70	7314.16	77.52	3253140.13	1584632.77	40.9345928	-104.5838515	0.00	
16022.00†	90.127	355.629	8202.49	7412.49	7413.87	69.90	3253131.48	1584732.40	40.9348664	-104.5838790	0.00	
16122.00†	90.127	355.629	8202.27	7512.29	7513.58	62.27	3253122.83	1584832.03	40.9351401	-104.5839066	0.00	
16222.00†	90.127	355.629	8202.04	7612.08	7613.29	54.65	3253114.18	1584931.65	40.9354138	-104.5839342	0.00	
16322.00†	90.127	355.629	8201.82	7711.87	7712.99	47.03	3253105.53	1585031.28	40.9356874	-104.5839618	0.00	
16422.00†	90.127	355.629	8201.60	7811.67	7812.70	39.41	3253096.88	1585130.91	40.9359611	-104.5839894	0.00	
16522.00†	90.127	355.629	8201.38	7911.46	7912.41	31.79	3253088.23	1585230.53	40.9362347	-104.5840169	0.00	
16622.00†	90.127	355.629	8201.16	8011.25	8012.12	24.17	3253079.58	1585330.16	40.9365084	-104.5840445	0.00	
16722.00†	90.127	355.629	8200.94	8111.05	8111.83	16.55	3253070.93	1585429.79	40.9367821	-104.5840721	0.00	
16822.00†	90.127	355.629	8200.71	8210.84	8211.54	8.93	3253062.27	1585529.42	40.9370557	-104.5840997	0.00	
16922.00†	90.127	355.629	8200.49	8310.63	8311.25	1.30	3253053.62	1585629.04	40.9373294	-104.5841273	0.00	
17022.00†	90.127	355.629	8200.27	8410.42	8410.96	-6.32	3253044.97	1585728.67	40.9376031	-104.5841549	0.00	

# Planned Wellpath Report

SALT RANCH FEE 501-1807H PWP Rev-C.0

Page 6 of 8

## REFERENCE WELLPATH IDENTIFICATION

Operator	CCRP OPERATING INC.	Well	SALT RANCH FEE 501-1807H
Field	WELD COUNTY (NAD 83/TN)	API/Legal	
Facility	SEC.18-T11N-R64W	Wellbore	SALT RANCH FEE 501-1807H PWB
Slot	SLOT#03 SALT RANCH FEE 501-1807H (333'FSL & 968'FEL, SEC.18)		

## WELLPATH DATA (195 stations) † = interpolated, ‡ = extrapolated station

MD [ft]	Inclination [°]	Azimuth [°]	TVD [ft]	Vert Sect [ft]	North [ft]	East [ft]	Grid East [US ft]	Grid North [US ft]	Latitude	Longitude	DLS [°/100ft]	Comments
17122.00†	90.127	355.629	8200.05	8510.22	8510.67	-13.94	3253036.32	1585828.30	40.9378767	-104.5841825	0.00	
17222.00†	90.127	355.629	8199.83	8610.01	8610.37	-21.56	3253027.67	1585927.92	40.9381504	-104.5842100	0.00	
17322.00†	90.127	355.629	8199.61	8709.80	8710.08	-29.18	3253019.02	1586027.55	40.9384241	-104.5842376	0.00	
17422.00†	90.127	355.629	8199.38	8809.60	8809.79	-36.80	3253010.37	1586127.18	40.9386977	-104.5842652	0.00	
17522.00†	90.127	355.629	8199.16	8909.39	8909.50	-44.42	3253001.72	1586226.81	40.9389714	-104.5842928	0.00	
17622.00†	90.127	355.629	8198.94	9009.18	9009.21	-52.05	3252993.07	1586326.43	40.9392450	-104.5843204	0.00	
17722.00†	90.127	355.629	8198.72	9108.98	9108.92	-59.67	3252984.42	1586426.06	40.9395187	-104.5843480	0.00	
17822.00†	90.127	355.629	8198.50	9208.77	9208.63	-67.29	3252975.76	1586525.69	40.9397924	-104.5843755	0.00	
17922.00†	90.127	355.629	8198.28	9308.56	9308.34	-74.91	3252967.11	1586625.31	40.9400660	-104.5844031	0.00	
18022.00†	90.127	355.629	8198.05	9408.36	9408.05	-82.53	3252958.46	1586724.94	40.9403397	-104.5844307	0.00	
18122.00†	90.127	355.629	8197.83	9508.15	9507.75	-90.15	3252949.81	1586824.57	40.9406134	-104.5844583	0.00	
18222.00†	90.127	355.629	8197.61	9607.94	9607.46	-97.77	3252941.16	1586924.19	40.9408870	-104.5844859	0.00	
18322.00†	90.127	355.629	8197.39	9707.74	9707.17	-105.40	3252932.51	1587023.82	40.9411607	-104.5845135	0.00	
18422.00†	90.127	355.629	8197.17	9807.53	9806.88	-113.02	3252923.86	1587123.45	40.9414344	-104.5845411	0.00	
18497.88	90.127	355.629	8197.00 <sup>‡</sup>	9883.25	9882.54	-118.80	3252917.29	1587199.04	40.9416420	-104.5845620	0.00	TD

REFERENCE WELLPATH IDENTIFICATION				
Operator	CCRP OPERATING INC.		Well	SALT RANCH FEE 501-1807H
Field	WELD COUNTY (NAD 83/TN)		API/Legal	
Facility	SEC.18-T11N-R64W		Wellbore	SALT RANCH FEE 501-1807H PWB
Slot	SLOT#03 SALT RANCH FEE 501-1807H (333'FSL & 968'FEL, SEC.18)			

TARGETS									
Name	MD [ft]	TVD [ft]	North [ft]	East [ft]	Grid East [US ft]	Grid North [US ft]	Latitude	Longitude	Shape
SEC.07-T11N-R64W SECTION LINES	N/A	0.00	-0.36	29.85	3253168.01	1577317.99	40.9145170	-104.5840240	polygon
2D Polygon: dimensions not calculated									
SEC.18-T11N-R64W SECTION LINES	N/A	0.00	-0.36	29.85	3253168.01	1577317.99	40.9145170	-104.5840240	polygon
2D Polygon: dimensions not calculated									
SALT RANCH FEE 501-1807H BHL REV-1 (300'FNL & 936'FEL, SEC.07)	N/A	8002.10	9883.99	-35.92	3253000.16	1587201.35	40.9416460	-104.5842620	point
SALT RANCH FEE 501-1807H LP REV-1 (735'FSL & 951'FEL, SEC.18)	N/A	8002.10	403.69	46.99	3253180.98	1577722.21	40.9156260	-104.5839620	point
SEC.07/18-T11N-R64W HARDLINES (300' SETBACKS)	N/A	8010.00	-0.36	29.85	3253168.01	1577317.99	40.9145170	-104.5840240	polygon
2D Polygon: dimensions not calculated									
3) SALT RANCH FEE 501-1807H BHL REV-3 (300'FNL & 1019'FEL, SEC.07)	18497.88	8197.00	9882.54	-118.80	3252917.29	1587199.04	40.9416420	-104.5845620	point
SALT RANCH FEE 501-1807H BHL REV-2 (300'FNL & 936'FEL, SEC.07)	N/A	8198.10	9883.99	-35.92	3253000.16	1587201.35	40.9416460	-104.5842620	point
2) SALT RANCH FEE 501-1807H WP REV-1 (0'FSL & 1083'FEL, SEC.07)	13536.29	8208.00	4934.70	241.52	3253328.70	1582255.08	40.9280620	-104.5832580	point
SALT RANCH FEE 501-1807H LP REV-2 (300'FSL & 951'FEL, SEC.18)	N/A	8218.10	-3.47	46.98	3253185.18	1577315.05	40.9145085	-104.5839620	point
SALT RANCH FEE 501-1807H LP ON PLAT (300'FSL & 1037'FEL, SEC.18)	N/A	8219.00	-3.47	46.98	3253185.18	1577315.05	40.9145085	-104.5839620	point
1) SALT RANCH FEE 501-1807H LP REV-3 (300'FSL & 1017'FEL, SEC.18)	8595.02	8219.00	-3.47	66.98	3253205.18	1577315.26	40.9145085	-104.5838896	point

SURVEY PROGRAM -				
Ref Wellbore: SALT RANCH FEE 501-1807H PWB		Ref Wellpath: SALT RANCH FEE 501-1807H PWP Rev-C.0		
Start MD [ft]	End MD [ft]	Positional Uncertainty Model	Log Name/Comment	Wellbore
22.00	195.00	BH NaviTrak (2019) (Axial)		SALT RANCH FEE 501-1807H PWB
195.00	18498.57	BH AutoTrak Curve/eXpress (2019) (Short spacing)		SALT RANCH FEE 501-1807H PWB



# Planned Wellpath Report

SALT RANCH FEE 501-1807H PWP Rev-C.0

Page 8 of 8

## REFERENCE WELLPATH IDENTIFICATION

Operator	CCRP OPERATING INC.	Well	SALT RANCH FEE 501-1807H
Field	WELD COUNTY (NAD 83/TN)	API/Legal	
Facility	SEC.18-T11N-R64W	Wellbore	SALT RANCH FEE 501-1807H PWB
Slot	SLOT#03 SALT RANCH FEE 501-1807H (333'FSL & 968'FEL, SEC.18)		

## DESIGN COMMENTS

MD [ft]	Inclination [°]	Azimuth [°]	TVD [ft]	Comment
22.00	0.000	175.375	22.00	Tie On
250.00	0.000	175.375	250.00	End of Tangent
916.67	10.000	175.375	913.29	End of Build (J)
3667.52	10.000	175.375	3622.35	End of Tangent (J)
4167.52	0.000	2.024	4119.82	Drop (XS)
7693.75	0.000	2.024	7646.04	KOP
8595.02	90.128	2.024	8219.00	LANDING
13536.29	90.128	2.024	8208.00	WP
13856.05	90.127	355.629	8207.29	3D Arc (J)
18497.88	90.127	355.629	8197.00	TD

# Closest Approach Clearance Summary Report

**SALT RANCH FEE 501-1807H PWP Rev-C.0 - SPE WPTS**  
**Stop Drilling HSE Risk (2017)**  
Page 1 of 2

## REFERENCE WELLPATH IDENTIFICATION

Operator	CCRP OPERATING INC.	Well	SALT RANCH FEE 501-1807H
Field	WELD COUNTY (NAD 83/TN)	API/Legal	
Facility	SEC.18-T11N-R64W	Wellbore	SALT RANCH FEE 501-1807H PWB
Slot	SLOT#03 SALT RANCH FEE 501-1807H (333'FSL & 968'FEL, SEC.18)		

## REPORT SETUP INFORMATION

Projection System	NAD83 / Lambert Colorado SP, Northern Zone (501), US feet	Software System	WellArchitect® 6.0
North Reference	True	User	Painsetr
Scale	1.000024	Report Generated	9/23/2020 at 6:19:34 AM
Convergence at slot	0.59° East	Database	WellArchitectDB

## WELLPATH LOCATION

	Local coordinates		Grid coordinates		Geographic coordinates	
	North[ft]	East[ft]	Easting[US ft]	Northing[US ft]	Latitude	Longitude
Slot Location	9.90	7.74	3253138.16	1577318.04	40.9145180°	-104.5841320°
Facility Reference Pt			3253130.53	1577308.07	40.9144908°	-104.5841600°
Field Reference Pt			3242001.26	1607883.12	40.9987100°	-104.6233300°

## WELLPATH DATUM

Calculation method	Minimum Curvature	RIG (22') (RKB) to Facility Vertical Datum	5626.00ft
Horizontal Reference Pt	Slot	RIG (22') (RKB) to Mean Sea Level	5626.00ft
Vertical Reference Pt	RIG (22') (RKB)	RIG (22') (RKB) to Mud Line at Slot (SLOT#03 SALT RANCH FEE 501-1807H (333'FSL & 968'FEL, SEC.18))	5626.00ft
MD Reference Pt	RIG (22') (RKB)		
Field Vertical Reference	Mean Sea Level		

## POSITIONAL UNCERTAINTY CALCULATION SETTINGS

Ellipse Confidence Limit	3.50 Std Dev	Ellipse Start MD	22.00ft	Surface Position Uncertainty	included
Declination	8.11° East of TN	Dip Angle	67.12°	Mag Field Strength	52436 nT
Slot Surface Uncertainty @1SD		Horizontal	0.100ft	Vertical	1.000ft
Facility Surface Uncertainty @1SD		Horizontal	8.200ft	Vertical	3.000ft
Positional Uncertainty values in the WELLPATH DATA table are the projection of the ellipsoid of uncertainty onto the vertical and horizontal planes					

# Closest Approach Clearance Summary Report

**SALT RANCH FEE 501-1807H PWP Rev-C.0 - SPE WPTS  
Stop Drilling HSE Risk (2017)**

Page 2 of 2

REFERENCE WELLPATH IDENTIFICATION			
Operator	CCRP OPERATING INC.	Well	SALT RANCH FEE 501-1807H
Field	WELD COUNTY (NAD 83/TN)	API/Legal	
Facility	SEC.18-T11N-R64W	Wellbore	SALT RANCH FEE 501-1807H PWB
Slot	SLOT#03 SALT RANCH FEE 501-1807H (333'FSL & 968'FEL, SEC.18)		

PROXIMITY-SCAN RULE			
Rule Name	SPE WPTS Stop Drilling HSE Risk (2017)	Rule Based On	Ratio
Plane of Rule	Closest Approach	Threshold Value	1.00
Include Casing & Hole Size	yes	Apply Cone of Safety	no

SURVEY PROGRAM -				
Ref Wellbore: SALT RANCH FEE 501-1807H PWB		Ref Wellpath: SALT RANCH FEE 501-1807H PWP Rev-C.0		
Start MD [ft]	End MD [ft]	Positional Uncertainty Model	Log Name/Comment	Wellbore
22.00	195.00	BH NaviTrak (2019) (Axial)		SALT RANCH FEE 501-1807H PWB
195.00	18498.57	BH AutoTrak Curve/eXpress (2019) (Short spacing)		SALT RANCH FEE 501-1807H PWB

CALCULATION RANGE & CUTOFF		
From: 22.00ft MD	To: 18497.88ft MD	C-C Cutoff: (none)

OFFSET WELL CLEARANCE SUMMARY (7 Offset Wellpaths selected) Ratios are calculated in Closest Approach plane													
Offset Facility	Offset Slot	Offset Well	Offset Wellbore	Offset Wellpath	Wellbore Status	C-C Clearance Distance			Rule Separation Ratio				Rule Status
						Ref MD [ft]	Min C-C Clear Dist [ft]	Diverging from MD [ft]	Ref MD of Min Ratio [ft]	Min Ratio	Min Ratio Dvrg from [ft]		
SEC.18-T11N-R64W	SLOT#04 SALT RANCH FEE 501-1830H (333'FSL & 983'FEL, SEC.18)	SALT RANCH FEE 501-1830H	SALT RANCH FEE 501-1830H PWB	SALT RANCH FEE 501-1830H PWP Rev-C.0	Planned	22.00	15.21	8263.70	8263.70	1.08	8263.70		WARN
SEC.18-T11N-R64W	SLOT#05 SALT RANCH FEE 202-1807H (334'FSL & 998'FEL, SEC.18)	SALT RANCH FEE 202-1807H	SALT RANCH FEE 202-1807H PWB	SALT RANCH FEE 202-1807H PWP Rev-A.0	Planned	22.00	30.13	18497.88	18497.88	1.73	18497.88		PASS
SEC.18-T11N-R64W	SLOT#01 SALT RANCH FEE 201-1807H (331'FSL & 938'FEL, SEC.18)	SALT RANCH FEE 201-1807H	SALT RANCH FEE 201-1807H PWB	SALT RANCH FEE 201-1807H PWP Rev-C.0	Planned	22.00	29.85	18422.00	18497.88	1.74	18497.88		PASS
SEC.18-T11N-R64W	SLOT#02 SALT RANCH FEE 201-1830H (332'FSL & 953'FEL, SEC.18)	SALT RANCH FEE 201-1830H	SALT RANCH FEE 201-1830H PWB	SALT RANCH FEE 201-1830H PWP Rev-C.0	Planned	22.00	14.93	8122.00	265.85	1.81	13522.00		PASS
SEC.18-T11N-R64W	SLOT#07 SALT RANCH FEE 502-1807H (335'FSL & 1028'FEL, SEC.18)	SALT RANCH FEE 502-1807H	SALT RANCH FEE 502-1807H PWB	SALT RANCH FEE 502-1807H PWP Rev-A.0	Planned	22.00	59.98	18497.88	18497.88	3.25	18497.88		PASS
SEC.18-T11N-R64W	SLOT#06 SALT RANCH FEE 202-1830H (334'FSL & 1013'FEL, SEC.18)	SALT RANCH FEE 202-1830H	SALT RANCH FEE 202-1830H PWB	SALT RANCH FEE 202-1830H PWP Rev-A.0	Planned	22.00	45.05	8022.00	339.65	6.75	16422.00		PASS
SEC.18-T11N-R64W	SLOT#08 SALT RANCH FEE 502-1830H (335'FSL & 1043'FEL, SEC.18)	SALT RANCH FEE 502-1830H	SALT RANCH FEE 502-1830H PWB	SALT RANCH FEE 502-1830H PWP Rev-A.0	Planned	22.00	75.18	8222.00	470.51	11.40	8222.00		PASS

### OFFSET WELL CLEARANCE SUMMARY (7 Offset Wellpaths selected) Ratios are calculated in Closest Approach plane

[illegible]