

CCRP OPERATING INC.



Location: COLORADO Slot: SLOT#01 SALT RANCH FEE 201-1807H (331'FSL & 938'FEL, SEC.18)
 Field: WELD COUNTY (NAD 83/TN) Well: SALT RANCH FEE 201-1807H
 Facility: SEC.18-T11N-R64W Wellbore: SALT RANCH FEE 201-1807H PWB

Plot reference wellpath is SALT RANCH FEE 201-1807H PWP REV-C.0
 True vertical depths are referenced to RIG (22) (RKB)
 Reference wellpath measured depths are referenced to RIG (22) (RKB)
 RIG (22) (RKB) to Mean Sea Level: 5626 feet
 Mean Sea Level to Mud line (At Slot: SLOT#01 SALT RANCH FEE 201-1807H (331'FSL & 938'FEL, SEC.18)): 0 feet
 Offset wellpath MDs are referenced to each path's default MD datum
 Grid System: NAD83 / Lambert Colorado SP, Northern Zone (501), US feet
 North Reference: True north
 Scale: True distance
 Coordinates are in feet referenced to Slot
 Depths are in feet
 Created by: painser on 2020-09-22; Database: WellArchitectDB

Location Information

Facility Name				Grid East (US ft)	Grid North (US ft)	Latitude	Longitude
SEC.18-T11N-R64W				3253130.525	1577308.065	40°54'52.1670"N	104°35'2.9760"W
Slot	Local N (ft)	Local E (ft)	Grid East (US ft)	Grid North (US ft)	Latitude	Longitude	
SLOT#01 SALT RANCH FEE 201-1807H (331'FSL & 938'FEL, SEC.18)	9.53	37.59	3253168.015	1577317.987	40°54'52.2612"N	104°35'2.4864"W	
RIG (22) (RKB) to Mud line (At Slot: SLOT#01 SALT RANCH FEE 201-1807H (331'FSL & 938'FEL, SEC.18))				5626ft			
Mean Sea Level to Mud line (At Slot: SLOT#01 SALT RANCH FEE 201-1807H (331'FSL & 938'FEL, SEC.18))				0ft			
RIG (22) (RKB) to Mean Sea Level				5626ft			

Survey Program

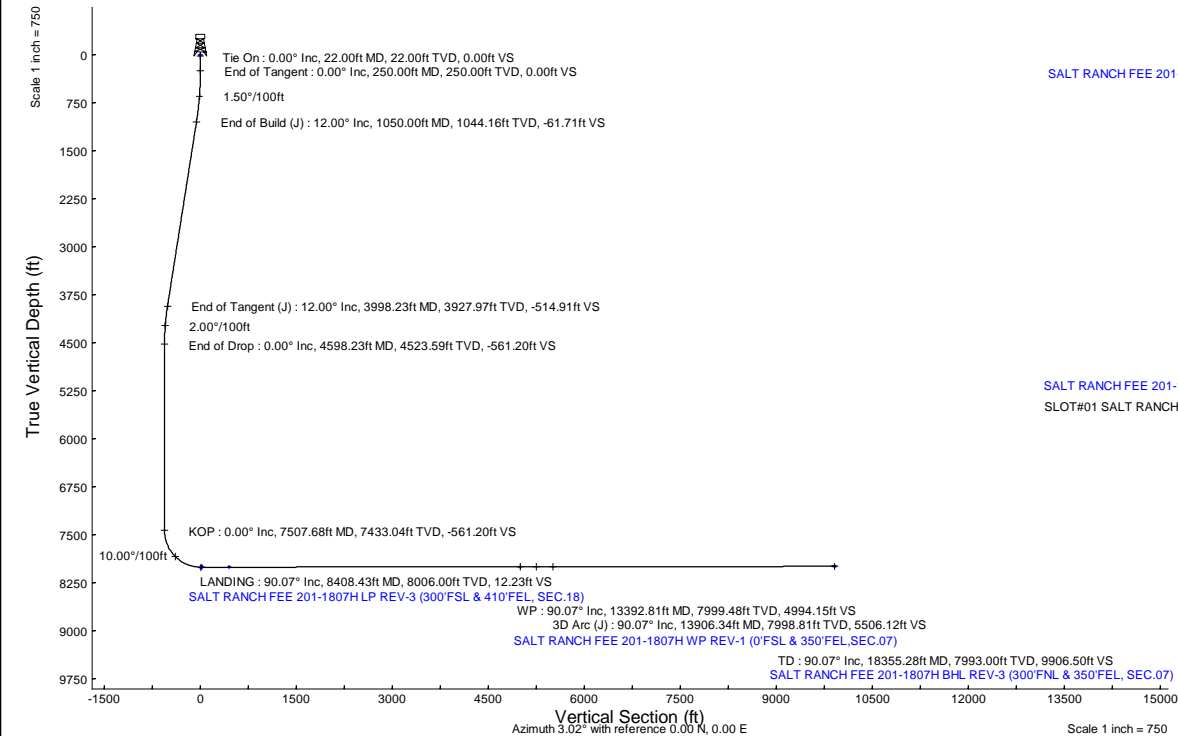
Start MD (ft)	End MD (ft)	Tool	Model	Log Name/Comment	Wellbore
22.00	1950.00	BH NavTrak (2019)	BH NavTrak (2019) (Axial)		SALT RANCH FEE 201-1807H PWB
1950.00	18355.28	BH AutoTrak CurveXpress (2019)	BH AutoTrak CurveXpress (2019) (Short spacing)		SALT RANCH FEE 201-1807H PWB

Targets

Name	MD (ft)	TVD (ft)	Local N (ft)	Local E (ft)	Grid East (US ft)	Grid North (US ft)	Latitude	Longitude
SEC.07-T11N-R64W SECTION LINES	N/A	0.00	0.00	0.00	3253168.01	1577317.99	40°54'52.2612"N	104°35'2.4864"W
SEC.18-T11N-R64W SECTION LINES	N/A	0.00	0.00	0.00	3253168.01	1577317.99	40°54'52.2612"N	104°35'2.4864"W
SALT RANCH FEE 201-1807H BHL REV-2 (300'FNL & 350'FEL, SEC.07)	N/A	7990.90	9892.74	521.89	3253587.70	1587215.81	40°56'30.0084"N	104°34'55.6860"W
SALT RANCH FEE 201-1807H BHL REV-3 (300'FNL & 350'FEL, SEC.07)	18355.28	7993.00	9892.74	521.89	3253587.70	1587215.81	40°56'30.0084"N	104°34'55.6860"W
SALT RANCH FEE 201-1807H WP REV-1 (0'FSL & 350'FEL, SEC.07)	13392.81	7999.48	4951.11	947.55	3254064.39	1582278.73	40°55'41.1816"N	104°34'50.1420"W
SALT RANCH FEE 201-1807H LP REV-2 (300'FSL & 350'FEL, SEC.18)	N/A	8000.90	-2.47	620.49	3253788.51	1577321.92	40°54'52.2367"N	104°34'54.4045"W
SALT RANCH FEE 201-1807H BHL REV-1 (300'FNL & 350'FEL, SEC.07)	N/A	8001.90	9892.74	521.89	3253587.70	1587215.81	40°56'30.0084"N	104°34'55.6860"W
SALT RANCH FEE 201-1807H LP REV-1 (735'FSL & 350'FEL, SEC.18)	N/A	8001.90	420.10	620.49	3253784.14	1577744.48	40°54'56.4120"N	104°34'54.4044"W
SALT RANCH FEE 201-1807H LP ON PLAT (300'FSL & 350'FEL, SEC.18)	N/A	8006.00	-15.66	588.99	3253757.15	1577308.41	40°54'52.1064"N	104°34'54.8148"W
SALT RANCH FEE 201-1807H LP REV-3 (300'FSL & 410'FEL, SEC.18)	8408.43	8006.00	-15.66	528.99	3253697.15	1577307.79	40°54'52.1064"N	104°34'55.5963"W
SEC.07-T11N-R64W HARDLINES (300' SETBACKS)	N/A	8010.00	0.00	0.00	3253168.01	1577317.99	40°54'52.2612"N	104°35'2.4864"W

Bottom Hole Location

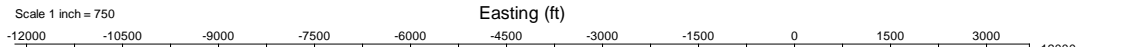
MD (ft)	Inc (°)	Az (°)	TVD (ft)	Local N (ft)	Local E (ft)	Grid East (US ft)	Grid North (US ft)	Latitude	Longitude
18355.28	90.075	354.547	7993.00	9892.74	521.89	3253587.70	1587215.81	40°56'30.0084"N	104°34'55.6860"W



Well Profile Data

Design Comment	MD (ft)	Inc (°)	Az (°)	TVD (ft)	Local N (ft)	Local E (ft)	DLS (°/100ft)	VS (ft)
Tie On	22.00	0.000	140.695	22.00	0.00	0.00	0.00	0.00
End of Tangent	250.00	0.000	140.695	250.00	0.00	0.00	0.00	0.00
End of Build (J)	1050.00	12.000	140.695	1044.16	-64.59	52.87	1.50	-61.71
End of Tangent (J)	3998.23	12.000	140.695	3927.97	-538.90	441.16	0.00	-514.91
End of Drop	4598.23	0.000	4.817	4523.59	-587.34	480.81	2.00	-561.20
KOP	7507.68	0.000	4.817	7433.04	-587.34	480.81	0.00	-561.20
LANDING	8408.43	90.075	4.817	8006.00	-15.66	528.99	10.00	12.23
WP	13392.81	90.075	4.817	7999.48	4951.11	947.55	0.00	4994.15
3D Arc (J)	13906.34	90.075	354.547	7998.81	5463.94	944.70	2.00	5506.12
TD	18355.28	90.075	354.547	7993.00	9892.74	521.89	0.00	9906.50

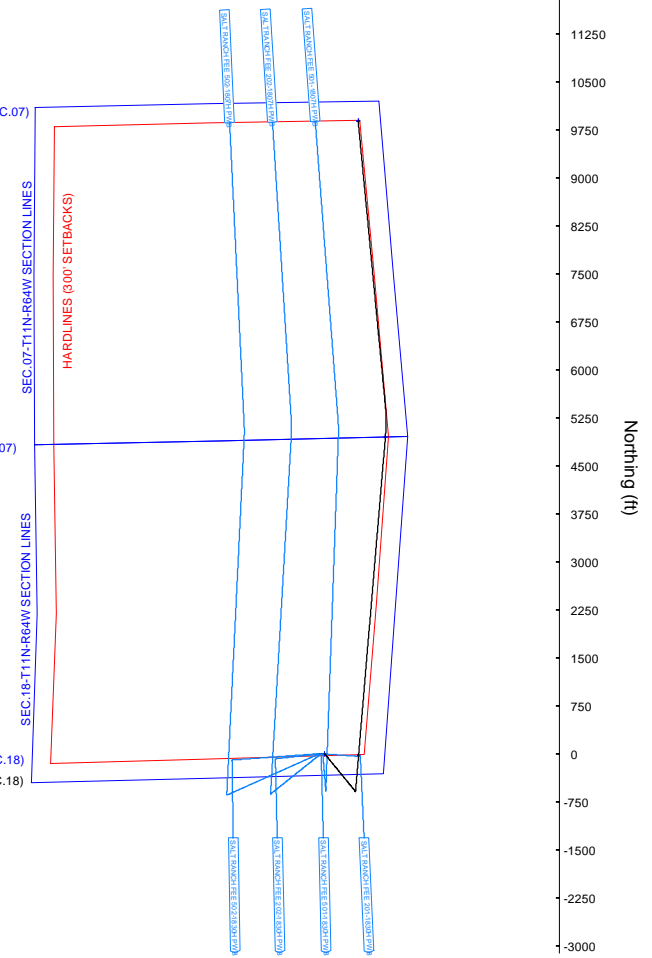
Scale 1 inch = 750



SALT RANCH FEE 201-1807H BHL REV-3 (300'FNL & 350'FEL, SEC.07)

SALT RANCH FEE 201-1807H WP REV-1 (0'FSL & 350'FEL, SEC.07)

SALT RANCH FEE 201-1807H LP REV-3 (300'FSL & 410'FEL, SEC.18)
 SLOT#01 SALT RANCH FEE 201-1807H (331'FSL & 938'FEL, SEC.18)



Scale 1 inch = 750

REFERENCE WELLPATH IDENTIFICATION			
Operator	CCRP OPERATING INC.	Well	SALT RANCH FEE 201-1807H
Field	WELD COUNTY (NAD 83/TN)	API/Legal	
Facility	SEC.18-T11N-R64W	Wellbore	SALT RANCH FEE 201-1807H PWB
Slot	SLOT#01 SALT RANCH FEE 201-1807H (331'FSL & 938'FEL, SEC.18)		

REPORT SETUP INFORMATION			
Projection System	NAD83 / Lambert Colorado SP, Northern Zone (501), US feet	Software System	WellArchitect® 6.0
North Reference	True	User	Painsetr
Scale	1.000024	Report Generated	9/22/2020 at 6:39:09 PM
Convergence at slot	0.59° East	Database	WellArchitectDB

WELLPATH LOCATION						
	Local coordinates		Grid coordinates		Geographic coordinates	
	North[ft]	East[ft]	Easting[US ft]	Northing[US ft]	Latitude	Longitude
Slot Location	9.53	37.59	3253168.02	1577317.99	40.9145170°	-104.5840240°
Facility Reference Pt			3253130.53	1577308.07	40.9144908°	-104.5841600°
Field Reference Pt			3242001.26	1607883.12	40.9987100°	-104.6233300°

WELLPATH DATUM			
Calculation method	Minimum curvature	RIG (22') (RKB) to Facility Vertical Datum	5626.00ft
Horizontal Reference Pt	Slot	RIG (22') (RKB) to Mean Sea Level	5626.00ft
Vertical Reference Pt	RIG (22') (RKB)	RIG (22') (RKB) to Mud Line at Slot (SLOT#01 SALT RANCH FEE 201-1807H (331'FSL & 938'FEL, SEC.18))	5626.00ft
MD Reference Pt	RIG (22') (RKB)	Section Origin	N 0.00, E 0.00 ft
Field Vertical Reference	Mean Sea Level	Section Azimuth	3.02°

REFERENCE WELLPATH IDENTIFICATION			
Operator	CCRP OPERATING INC.	Well	SALT RANCH FEE 201-1807H
Field	WELD COUNTY (NAD 83/TN)	API/Legal	
Facility	SEC.18-T11N-R64W	Wellbore	SALT RANCH FEE 201-1807H PWB
Slot	SLOT#01 SALT RANCH FEE 201-1807H (331'FSL & 938'FEL, SEC.18)		

WELLPATH DATA (194 stations) † = interpolated, ‡ = extrapolated station												
MD [ft]	Inclination [°]	Azimuth [°]	TVD [ft]	Vert Sect [ft]	North [ft]	East [ft]	Grid East [US ft]	Grid North [US ft]	Latitude	Longitude	DLS [°/100ft]	Comments
0.00†	0.000	140.695	0.00	0.00	0.00	0.00	3253168.01	1577317.99	40.9145170	-104.5840240	0.00	
22.00	0.000	140.695	22.00	0.00	0.00	0.00	3253168.01	1577317.99	40.9145170	-104.5840240	0.00	Tie On
122.00†	0.000	140.695	122.00	0.00	0.00	0.00	3253168.01	1577317.99	40.9145170	-104.5840240	0.00	
222.00†	0.000	140.695	222.00	0.00	0.00	0.00	3253168.01	1577317.99	40.9145170	-104.5840240	0.00	
250.00	0.000	140.695	250.00	0.00	0.00	0.00	3253168.01	1577317.99	40.9145170	-104.5840240	0.00	End of Tangent
322.00†	1.080	140.695	322.00	-0.50	-0.53	0.43	3253168.45	1577317.47	40.9145156	-104.5840224	1.50	
422.00†	2.580	140.695	421.94	-2.86	-3.00	2.45	3253170.50	1577315.02	40.9145088	-104.5840151	1.50	
522.00†	4.080	140.695	521.77	-7.16	-7.49	6.13	3253174.22	1577310.56	40.9144964	-104.5840018	1.50	
622.00†	5.580	140.695	621.41	-13.38	-14.01	11.47	3253179.62	1577304.10	40.9144786	-104.5839825	1.50	
722.00†	7.080	140.695	720.80	-21.53	-22.54	18.45	3253186.70	1577295.64	40.9144551	-104.5839572	1.50	
822.00†	8.580	140.695	819.86	-31.61	-33.08	27.08	3253195.43	1577285.19	40.9144262	-104.5839260	1.50	
922.00†	10.080	140.695	918.54	-43.59	-45.62	37.35	3253205.83	1577272.75	40.9143918	-104.5838889	1.50	
1022.00†	11.580	140.695	1016.75	-57.48	-60.16	49.25	3253217.88	1577258.34	40.9143519	-104.5838458	1.50	
1050.00	12.000	140.695	1044.16	-61.71	-64.59	52.87	3253221.55	1577253.95	40.9143397	-104.5838327	1.50	End of Build (J)
1122.00†	12.000	140.695	1114.59	-72.78	-76.17	62.36	3253231.16	1577242.46	40.9143079	-104.5837984	0.00	
1222.00†	12.000	140.695	1212.41	-88.15	-92.26	75.53	3253244.49	1577226.51	40.9142638	-104.5837507	0.00	
1322.00†	12.000	140.695	1310.22	-103.52	-108.35	88.70	3253257.83	1577210.56	40.9142196	-104.5837031	0.00	
1422.00†	12.000	140.695	1408.04	-118.90	-124.44	101.87	3253271.16	1577194.61	40.9141755	-104.5836554	0.00	
1522.00†	12.000	140.695	1505.85	-134.27	-140.52	115.04	3253284.50	1577178.66	40.9141313	-104.5836078	0.00	
1622.00†	12.000	140.695	1603.66	-149.64	-156.61	128.21	3253297.83	1577162.70	40.9140872	-104.5835601	0.00	
1722.00†	12.000	140.695	1701.48	-165.01	-172.70	141.38	3253311.17	1577146.75	40.9140430	-104.5835125	0.00	
1822.00†	12.000	140.695	1799.29	-180.38	-188.79	154.55	3253324.51	1577130.80	40.9139988	-104.5834648	0.00	
1922.00†	12.000	140.695	1897.11	-195.76	-204.88	167.72	3253337.84	1577114.85	40.9139547	-104.5834172	0.00	
2022.00†	12.000	140.695	1994.92	-211.13	-220.96	180.89	3253351.18	1577098.90	40.9139105	-104.5833695	0.00	
2122.00†	12.000	140.695	2092.74	-226.50	-237.05	194.06	3253364.51	1577082.95	40.9138664	-104.5833219	0.00	
2222.00†	12.000	140.695	2190.55	-241.87	-253.14	207.23	3253377.85	1577067.00	40.9138222	-104.5832742	0.00	
2322.00†	12.000	140.695	2288.37	-257.24	-269.23	220.40	3253391.19	1577051.04	40.9137781	-104.5832266	0.00	
2422.00†	12.000	140.695	2386.18	-272.61	-285.32	233.57	3253404.52	1577035.09	40.9137339	-104.5831790	0.00	
2522.00†	12.000	140.695	2484.00	-287.99	-301.40	246.74	3253417.86	1577019.14	40.9136897	-104.5831313	0.00	
2622.00†	12.000	140.695	2581.81	-303.36	-317.49	259.91	3253431.19	1577003.19	40.9136456	-104.5830837	0.00	
2722.00†	12.000	140.695	2679.63	-318.73	-333.58	273.08	3253444.53	1576987.24	40.9136014	-104.5830360	0.00	
2822.00†	12.000	140.695	2777.44	-334.10	-349.67	286.25	3253457.86	1576971.29	40.9135573	-104.5829884	0.00	
2922.00†	12.000	140.695	2875.26	-349.47	-365.76	299.42	3253471.20	1576955.34	40.9135131	-104.5829407	0.00	
3022.00†	12.000	140.695	2973.07	-364.85	-381.84	312.59	3253484.54	1576939.38	40.9134690	-104.5828931	0.00	
3122.00†	12.000	140.695	3070.89	-380.22	-397.93	325.76	3253497.87	1576923.43	40.9134248	-104.5828454	0.00	
3222.00†	12.000	140.695	3168.70	-395.59	-414.02	338.93	3253511.21	1576907.48	40.9133807	-104.5827978	0.00	
3322.00†	12.000	140.695	3266.52	-410.96	-430.11	352.10	3253524.54	1576891.53	40.9133365	-104.5827501	0.00	
3422.00†	12.000	140.695	3364.33	-426.33	-446.20	365.27	3253537.88	1576875.58	40.9132923	-104.5827025	0.00	
3522.00†	12.000	140.695	3462.15	-441.70	-462.28	378.44	3253551.21	1576859.63	40.9132482	-104.5826548	0.00	
3622.00†	12.000	140.695	3559.96	-457.08	-478.37	391.61	3253564.55	1576843.68	40.9132040	-104.5826072	0.00	
3722.00†	12.000	140.695	3657.77	-472.45	-494.46	404.78	3253577.89	1576827.72	40.9131599	-104.5825595	0.00	
3822.00†	12.000	140.695	3755.59	-487.82	-510.55	417.95	3253591.22	1576811.77	40.9131157	-104.5825119	0.00	
3922.00†	12.000	140.695	3853.40	-503.19	-526.64	431.12	3253604.56	1576795.82	40.9130716	-104.5824642	0.00	
3998.23	12.000	140.695	3927.97	-514.91	-538.90	441.16	3253614.72	1576783.66	40.9130379	-104.5824279	0.00	End of Tangent (J)
4022.00†	11.525	140.695	3951.24	-518.49	-542.65	444.23	3253617.83	1576779.94	40.9130276	-104.5824168	2.00	

REFERENCE WELLPATH IDENTIFICATION			
Operator	CCRP OPERATING INC.	Well	SALT RANCH FEE 201-1807H
Field	WELD COUNTY (NAD 83/TN)	API/Legal	
Facility	SEC.18-T11N-R64W	Wellbore	SALT RANCH FEE 201-1807H PWB
Slot	SLOT#01 SALT RANCH FEE 201-1807H (331'FSL & 938'FEL, SEC.18)		

WELLPATH DATA (194 stations) † = interpolated, ‡ = extrapolated station												
MD [ft]	Inclination [°]	Azimuth [°]	TVD [ft]	Vert Sect [ft]	North [ft]	East [ft]	Grid East [US ft]	Grid North [US ft]	Latitude	Longitude	DLS [°/100ft]	Comments
4122.00†	9.525	140.695	4049.55	-532.00	-556.78	455.79	3253629.55	1576765.93	40.9129888	-104.5823749	2.00	
4222.00†	7.525	140.695	4148.44	-542.96	-568.25	465.18	3253639.05	1576754.56	40.9129573	-104.5823410	2.00	
4322.00†	5.525	140.695	4247.79	-551.36	-577.04	472.38	3253646.34	1576745.84	40.9129332	-104.5823149	2.00	
4422.00†	3.525	140.695	4347.47	-557.19	-583.15	477.38	3253651.40	1576739.79	40.9129164	-104.5822969	2.00	
4522.00†	1.525	140.695	4447.37	-560.45	-586.56	480.17	3253654.23	1576736.41	40.9129071	-104.5822868	2.00	
4598.23	0.000	4.817	4523.59	-561.20	-587.34	480.81	3253654.88	1576735.63	40.9129049	-104.5822844	2.00	End of Drop
4622.00†	0.000	4.817	4547.36	-561.20	-587.34	480.81	3253654.88	1576735.63	40.9129049	-104.5822844	0.00	
4722.00†	0.000	4.817	4647.36	-561.20	-587.34	480.81	3253654.88	1576735.63	40.9129049	-104.5822844	0.00	
4822.00†	0.000	4.817	4747.36	-561.20	-587.34	480.81	3253654.88	1576735.63	40.9129049	-104.5822844	0.00	
4922.00†	0.000	4.817	4847.36	-561.20	-587.34	480.81	3253654.88	1576735.63	40.9129049	-104.5822844	0.00	
5022.00†	0.000	4.817	4947.36	-561.20	-587.34	480.81	3253654.88	1576735.63	40.9129049	-104.5822844	0.00	
5122.00†	0.000	4.817	5047.36	-561.20	-587.34	480.81	3253654.88	1576735.63	40.9129049	-104.5822844	0.00	
5222.00†	0.000	4.817	5147.36	-561.20	-587.34	480.81	3253654.88	1576735.63	40.9129049	-104.5822844	0.00	
5322.00†	0.000	4.817	5247.36	-561.20	-587.34	480.81	3253654.88	1576735.63	40.9129049	-104.5822844	0.00	
5422.00†	0.000	4.817	5347.36	-561.20	-587.34	480.81	3253654.88	1576735.63	40.9129049	-104.5822844	0.00	
5522.00†	0.000	4.817	5447.36	-561.20	-587.34	480.81	3253654.88	1576735.63	40.9129049	-104.5822844	0.00	
5622.00†	0.000	4.817	5547.36	-561.20	-587.34	480.81	3253654.88	1576735.63	40.9129049	-104.5822844	0.00	
5722.00†	0.000	4.817	5647.36	-561.20	-587.34	480.81	3253654.88	1576735.63	40.9129049	-104.5822844	0.00	
5822.00†	0.000	4.817	5747.36	-561.20	-587.34	480.81	3253654.88	1576735.63	40.9129049	-104.5822844	0.00	
5922.00†	0.000	4.817	5847.36	-561.20	-587.34	480.81	3253654.88	1576735.63	40.9129049	-104.5822844	0.00	
6022.00†	0.000	4.817	5947.36	-561.20	-587.34	480.81	3253654.88	1576735.63	40.9129049	-104.5822844	0.00	
6122.00†	0.000	4.817	6047.36	-561.20	-587.34	480.81	3253654.88	1576735.63	40.9129049	-104.5822844	0.00	
6222.00†	0.000	4.817	6147.36	-561.20	-587.34	480.81	3253654.88	1576735.63	40.9129049	-104.5822844	0.00	
6322.00†	0.000	4.817	6247.36	-561.20	-587.34	480.81	3253654.88	1576735.63	40.9129049	-104.5822844	0.00	
6422.00†	0.000	4.817	6347.36	-561.20	-587.34	480.81	3253654.88	1576735.63	40.9129049	-104.5822844	0.00	
6522.00†	0.000	4.817	6447.36	-561.20	-587.34	480.81	3253654.88	1576735.63	40.9129049	-104.5822844	0.00	
6622.00†	0.000	4.817	6547.36	-561.20	-587.34	480.81	3253654.88	1576735.63	40.9129049	-104.5822844	0.00	
6722.00†	0.000	4.817	6647.36	-561.20	-587.34	480.81	3253654.88	1576735.63	40.9129049	-104.5822844	0.00	
6822.00†	0.000	4.817	6747.36	-561.20	-587.34	480.81	3253654.88	1576735.63	40.9129049	-104.5822844	0.00	
6922.00†	0.000	4.817	6847.36	-561.20	-587.34	480.81	3253654.88	1576735.63	40.9129049	-104.5822844	0.00	
7022.00†	0.000	4.817	6947.36	-561.20	-587.34	480.81	3253654.88	1576735.63	40.9129049	-104.5822844	0.00	
7122.00†	0.000	4.817	7047.36	-561.20	-587.34	480.81	3253654.88	1576735.63	40.9129049	-104.5822844	0.00	
7222.00†	0.000	4.817	7147.36	-561.20	-587.34	480.81	3253654.88	1576735.63	40.9129049	-104.5822844	0.00	
7322.00†	0.000	4.817	7247.36	-561.20	-587.34	480.81	3253654.88	1576735.63	40.9129049	-104.5822844	0.00	
7422.00†	0.000	4.817	7347.36	-561.20	-587.34	480.81	3253654.88	1576735.63	40.9129049	-104.5822844	0.00	
7507.68	0.000	4.817	7433.04	-561.20	-587.34	480.81	3253654.88	1576735.63	40.9129049	-104.5822844	0.00	KOP
7522.00†	1.432	4.817	7447.36	-561.02	-587.16	480.83	3253654.89	1576735.81	40.9129054	-104.5822844	10.00	
7622.00†	11.432	4.817	7546.60	-549.83	-576.01	481.77	3253655.72	1576746.97	40.9129360	-104.5822810	10.00	
7722.00†	21.432	4.817	7642.40	-521.60	-547.86	484.14	3253657.80	1576775.14	40.9130133	-104.5822724	10.00	
7822.00†	31.432	4.817	7731.83	-477.16	-503.56	487.87	3253661.07	1576819.48	40.9131349	-104.5822589	10.00	
7922.00†	41.432	4.817	7812.19	-417.88	-444.46	492.85	3253665.44	1576878.63	40.9132971	-104.5822409	10.00	
8022.00†	51.432	4.817	7881.02	-345.55	-372.35	498.93	3253670.77	1576950.80	40.9134950	-104.5822189	10.00	
8122.00†	61.432	4.817	7936.24	-262.37	-289.43	505.92	3253676.91	1577033.79	40.9137226	-104.5821936	10.00	
8222.00†	71.432	4.817	7976.18	-170.88	-198.21	513.60	3253683.65	1577125.09	40.9139730	-104.5821658	10.00	
8322.00†	81.432	4.817	7999.61	-73.84	-101.47	521.76	3253690.80	1577221.91	40.9142385	-104.5821363	10.00	

REFERENCE WELLPATH IDENTIFICATION			
Operator	CCRP OPERATING INC.	Well	SALT RANCH FEE 201-1807H
Field	WELD COUNTY (NAD 83/TN)	API/Legal	
Facility	SEC.18-T11N-R64W	Wellbore	SALT RANCH FEE 201-1807H PWB
Slot	SLOT#01 SALT RANCH FEE 201-1807H (331'FSL & 938'FEL, SEC.18)		

WELLPATH DATA (194 stations) † = interpolated, ‡ = extrapolated station												
MD [ft]	Inclination [°]	Azimuth [°]	TVD [ft]	Vert Sect [ft]	North [ft]	East [ft]	Grid East [US ft]	Grid North [US ft]	Latitude	Longitude	DLS [°/100ft]	Comments
8408.43	90.075	4.817	8006.00 [†]	12.23	-15.66	528.99	3253697.15	1577307.79	40.9144740	-104.5821101	10.00	LANDING
8422.00 [†]	90.075	4.817	8005.98	25.79	-2.14	530.13	3253698.15	1577321.32	40.9145111	-104.5821060	0.00	
8522.00 [†]	90.075	4.817	8005.85	125.74	97.51	538.52	3253705.52	1577421.05	40.9147846	-104.5820756	0.00	
8622.00 [†]	90.075	4.817	8005.72	225.69	197.15	546.92	3253712.88	1577520.78	40.9150581	-104.5820452	0.00	
8722.00 [†]	90.075	4.817	8005.59	325.64	296.80	555.32	3253720.25	1577620.52	40.9153316	-104.5820148	0.00	
8822.00 [†]	90.075	4.817	8005.46	425.60	396.45	563.72	3253727.62	1577720.25	40.9156051	-104.5819844	0.00	
8922.00 [†]	90.075	4.817	8005.33	525.55	496.10	572.11	3253734.99	1577819.98	40.9158786	-104.5819540	0.00	
9022.00 [†]	90.075	4.817	8005.20	625.50	595.74	580.51	3253742.36	1577919.71	40.9161521	-104.5819236	0.00	
9122.00 [†]	90.075	4.817	8005.07	725.45	695.39	588.91	3253749.72	1578019.44	40.9164256	-104.5818932	0.00	
9222.00 [†]	90.075	4.817	8004.94	825.40	795.04	597.31	3253757.09	1578119.17	40.9166991	-104.5818628	0.00	
9322.00 [†]	90.075	4.817	8004.80	925.35	894.68	605.70	3253764.46	1578218.90	40.9169726	-104.5818324	0.00	
9422.00 [†]	90.075	4.817	8004.67	1025.30	994.33	614.10	3253771.83	1578318.63	40.9172461	-104.5818020	0.00	
9522.00 [†]	90.075	4.817	8004.54	1125.25	1093.98	622.50	3253779.19	1578418.36	40.9175196	-104.5817717	0.00	
9622.00 [†]	90.075	4.817	8004.41	1225.20	1193.62	630.90	3253786.56	1578518.09	40.9177931	-104.5817413	0.00	
9722.00 [†]	90.075	4.817	8004.28	1325.15	1293.27	639.29	3253793.93	1578617.82	40.9180665	-104.5817109	0.00	
9822.00 [†]	90.075	4.817	8004.15	1425.10	1392.92	647.69	3253801.30	1578717.55	40.9183400	-104.5816805	0.00	
9922.00 [†]	90.075	4.817	8004.02	1525.05	1492.56	656.09	3253808.67	1578817.28	40.9186135	-104.5816501	0.00	
10022.00 [†]	90.075	4.817	8003.89	1625.00	1592.21	664.49	3253816.03	1578917.01	40.9188870	-104.5816197	0.00	
10122.00 [†]	90.075	4.817	8003.76	1724.95	1691.86	672.88	3253823.40	1579016.74	40.9191605	-104.5815893	0.00	
10222.00 [†]	90.075	4.817	8003.63	1824.91	1791.50	681.28	3253830.77	1579116.47	40.9194340	-104.5815589	0.00	
10322.00 [†]	90.075	4.817	8003.50	1924.86	1891.15	689.68	3253838.14	1579216.20	40.9197075	-104.5815285	0.00	
10422.00 [†]	90.075	4.817	8003.37	2024.81	1990.80	698.08	3253845.51	1579315.93	40.9199810	-104.5814981	0.00	
10522.00 [†]	90.075	4.817	8003.24	2124.76	2090.44	706.47	3253852.87	1579415.66	40.9202545	-104.5814677	0.00	
10622.00 [†]	90.075	4.817	8003.10	2224.71	2190.09	714.87	3253860.24	1579515.39	40.9205280	-104.5814373	0.00	
10722.00 [†]	90.075	4.817	8002.97	2324.66	2289.74	723.27	3253867.61	1579615.12	40.9208015	-104.5814069	0.00	
10822.00 [†]	90.075	4.817	8002.84	2424.61	2389.38	731.67	3253874.98	1579714.85	40.9210750	-104.5813765	0.00	
10922.00 [†]	90.075	4.817	8002.71	2524.56	2489.03	740.06	3253882.35	1579814.58	40.9213485	-104.5813461	0.00	
11022.00 [†]	90.075	4.817	8002.58	2624.51	2588.68	748.46	3253889.71	1579914.31	40.9216220	-104.5813157	0.00	
11122.00 [†]	90.075	4.817	8002.45	2724.46	2688.32	756.86	3253897.08	1580014.04	40.9218955	-104.5812853	0.00	
11222.00 [†]	90.075	4.817	8002.32	2824.41	2787.97	765.26	3253904.45	1580113.77	40.9221690	-104.5812549	0.00	
11322.00 [†]	90.075	4.817	8002.19	2924.36	2887.62	773.65	3253911.82	1580213.50	40.9224425	-104.5812245	0.00	
11422.00 [†]	90.075	4.817	8002.06	3024.31	2987.26	782.05	3253919.19	1580313.23	40.9227160	-104.5811941	0.00	
11522.00 [†]	90.075	4.817	8001.93	3124.26	3086.91	790.45	3253926.55	1580412.96	40.9229894	-104.5811637	0.00	
11622.00 [†]	90.075	4.817	8001.80	3224.22	3186.56	798.85	3253933.92	1580512.69	40.9232629	-104.5811333	0.00	
11722.00 [†]	90.075	4.817	8001.67	3324.17	3286.20	807.24	3253941.29	1580612.42	40.9235364	-104.5811029	0.00	
11822.00 [†]	90.075	4.817	8001.53	3424.12	3385.85	815.64	3253948.66	1580712.15	40.9238099	-104.5810725	0.00	
11922.00 [†]	90.075	4.817	8001.40	3524.07	3485.50	824.04	3253956.02	1580811.89	40.9240834	-104.5810421	0.00	
12022.00 [†]	90.075	4.817	8001.27	3624.02	3585.14	832.44	3253963.39	1580911.62	40.9243569	-104.5810117	0.00	
12122.00 [†]	90.075	4.817	8001.14	3723.97	3684.79	840.83	3253970.76	1581011.35	40.9246304	-104.5809813	0.00	
12222.00 [†]	90.075	4.817	8001.01	3823.92	3784.44	849.23	3253978.13	1581111.08	40.9249039	-104.5809509	0.00	
12322.00 [†]	90.075	4.817	8000.88	3923.87	3884.08	857.63	3253985.50	1581210.81	40.9251774	-104.5809205	0.00	
12422.00 [†]	90.075	4.817	8000.75	4023.82	3983.73	866.03	3253992.86	1581310.54	40.9254509	-104.5808901	0.00	
12522.00 [†]	90.075	4.817	8000.62	4123.77	4083.38	874.42	3254000.23	1581410.27	40.9257244	-104.5808597	0.00	
12622.00 [†]	90.075	4.817	8000.49	4223.72	4183.02	882.82	3254007.60	1581510.00	40.9259979	-104.5808293	0.00	
12722.00 [†]	90.075	4.817	8000.36	4323.67	4282.67	891.22	3254014.97	1581609.73	40.9262714	-104.5807989	0.00	

REFERENCE WELLPATH IDENTIFICATION			
Operator	CCRP OPERATING INC.	Well	SALT RANCH FEE 201-1807H
Field	WELD COUNTY (NAD 83/TN)	API/Legal	
Facility	SEC.18-T11N-R64W	Wellbore	SALT RANCH FEE 201-1807H PWB
Slot	SLOT#01 SALT RANCH FEE 201-1807H (331'FSL & 938'FEL, SEC.18)		

WELLPATH DATA (194 stations) † = interpolated, ‡ = extrapolated station												
MD [ft]	Inclination [°]	Azimuth [°]	TVD [ft]	Vert Sect [ft]	North [ft]	East [ft]	Grid East [US ft]	Grid North [US ft]	Latitude	Longitude	DLS [°/100ft]	Comments
12822.00†	90.075	4.817	8000.23	4423.62	4382.32	899.62	3254022.34	1581709.46	40.9265449	-104.5807685	0.00	
12922.00†	90.075	4.817	8000.10	4523.57	4481.96	908.01	3254029.70	1581809.19	40.9268184	-104.5807381	0.00	
13022.00†	90.075	4.817	7999.97	4623.53	4581.61	916.41	3254037.07	1581908.92	40.9270919	-104.5807077	0.00	
13122.00†	90.075	4.817	7999.83	4723.48	4681.26	924.81	3254044.44	1582008.65	40.9273653	-104.5806773	0.00	
13222.00†	90.075	4.817	7999.70	4823.43	4780.90	933.21	3254051.81	1582108.38	40.9276388	-104.5806469	0.00	
13322.00†	90.075	4.817	7999.57	4923.38	4880.55	941.60	3254059.18	1582208.11	40.9279123	-104.5806165	0.00	
13392.81	90.075	4.817	7999.48 [‡]	4994.15	4951.11	947.55	3254064.39	1582278.73	40.9281060	-104.5805950	0.00	WP
13422.00†	90.075	4.233	7999.44	5023.33	4980.21	949.85	3254066.40	1582307.85	40.9281859	-104.5805867	2.00	
13522.00†	90.075	2.233	7999.31	5123.33	5080.04	955.49	3254071.00	1582407.74	40.9284599	-104.5805662	2.00	
13622.00†	90.075	0.233	7999.18	5223.27	5180.02	957.65	3254072.12	1582507.73	40.9287343	-104.5805584	2.00	
13722.00†	90.075	358.233	7999.05	5323.05	5280.00	956.31	3254069.75	1582607.70	40.9290087	-104.5805633	2.00	
13822.00†	90.075	356.233	7998.92	5422.53	5379.88	951.48	3254063.89	1582707.53	40.9292828	-104.5805807	2.00	
13906.34	90.075	354.547	7998.81	5506.12	5463.94	944.70	3254056.25	1582791.51	40.9295135	-104.5806052	2.00	3D Arc (J)
13922.00†	90.075	354.547	7998.79	5521.61	5479.53	943.21	3254054.60	1582807.09	40.9295563	-104.5806106	0.00	
14022.00†	90.075	354.547	7998.66	5620.52	5579.08	933.71	3254044.07	1582906.54	40.9298296	-104.5806450	0.00	
14122.00†	90.075	354.547	7998.53	5719.43	5678.63	924.21	3254033.54	1583005.98	40.9301028	-104.5806794	0.00	
14222.00†	90.075	354.547	7998.40	5818.34	5778.18	914.70	3254023.00	1583105.43	40.9303760	-104.5807138	0.00	
14322.00†	90.075	354.547	7998.26	5917.25	5877.72	905.20	3254012.47	1583204.87	40.9306492	-104.5807481	0.00	
14422.00†	90.075	354.547	7998.13	6016.16	5977.27	895.70	3254001.94	1583304.32	40.9309224	-104.5807825	0.00	
14522.00†	90.075	354.547	7998.00	6115.06	6076.82	886.19	3253991.41	1583403.77	40.9311957	-104.5808169	0.00	
14622.00†	90.075	354.547	7997.87	6213.97	6176.36	876.69	3253980.88	1583503.21	40.9314689	-104.5808513	0.00	
14722.00†	90.075	354.547	7997.74	6312.88	6275.91	867.19	3253970.35	1583602.66	40.9317421	-104.5808857	0.00	
14822.00†	90.075	354.547	7997.61	6411.79	6375.46	857.68	3253959.81	1583702.10	40.9320153	-104.5809200	0.00	
14922.00†	90.075	354.547	7997.48	6510.70	6475.01	848.18	3253949.28	1583801.55	40.9322886	-104.5809544	0.00	
15022.00†	90.075	354.547	7997.35	6609.61	6574.55	838.67	3253938.75	1583901.00	40.9325618	-104.5809888	0.00	
15122.00†	90.075	354.547	7997.22	6708.51	6674.10	829.17	3253928.22	1584000.44	40.9328350	-104.5810232	0.00	
15222.00†	90.075	354.547	7997.09	6807.42	6773.65	819.67	3253917.69	1584099.89	40.9331082	-104.5810576	0.00	
15322.00†	90.075	354.547	7996.96	6906.33	6873.20	810.16	3253907.16	1584199.33	40.9333814	-104.5810919	0.00	
15422.00†	90.075	354.547	7996.83	7005.24	6972.74	800.66	3253896.62	1584298.78	40.9336547	-104.5811263	0.00	
15522.00†	90.075	354.547	7996.70	7104.15	7072.29	791.16	3253886.09	1584398.23	40.9339279	-104.5811607	0.00	
15622.00†	90.075	354.547	7996.57	7203.06	7171.84	781.65	3253875.56	1584497.67	40.9342011	-104.5811951	0.00	
15722.00†	90.075	354.547	7996.44	7301.97	7271.38	772.15	3253865.03	1584597.12	40.9344743	-104.5812295	0.00	
15822.00†	90.075	354.547	7996.31	7400.87	7370.93	762.65	3253854.50	1584696.56	40.9347475	-104.5812639	0.00	
15922.00†	90.075	354.547	7996.18	7499.78	7470.48	753.14	3253843.97	1584796.01	40.9350208	-104.5812983	0.00	
16022.00†	90.075	354.547	7996.05	7598.69	7570.03	743.64	3253833.43	1584895.46	40.9352940	-104.5813326	0.00	
16122.00†	90.075	354.547	7995.92	7697.60	7669.57	734.13	3253822.90	1584994.90	40.9355672	-104.5813670	0.00	
16222.00†	90.075	354.547	7995.78	7796.51	7769.12	724.63	3253812.37	1585094.35	40.9358404	-104.5814014	0.00	
16322.00†	90.075	354.547	7995.65	7895.42	7868.67	715.13	3253801.84	1585193.79	40.9361137	-104.5814358	0.00	
16422.00†	90.075	354.547	7995.52	7994.32	7968.22	705.62	3253791.31	1585293.24	40.9363869	-104.5814702	0.00	
16522.00†	90.075	354.547	7995.39	8093.23	8067.76	696.12	3253780.78	1585392.69	40.9366601	-104.5815046	0.00	
16622.00†	90.075	354.547	7995.26	8192.14	8167.31	686.62	3253770.24	1585492.13	40.9369333	-104.5815389	0.00	
16722.00†	90.075	354.547	7995.13	8291.05	8266.86	677.11	3253759.71	1585591.58	40.9372065	-104.5815733	0.00	
16822.00†	90.075	354.547	7995.00	8389.96	8366.40	667.61	3253749.18	1585691.02	40.9374798	-104.5816077	0.00	
16922.00†	90.075	354.547	7994.87	8488.87	8465.95	658.10	3253738.65	1585790.47	40.9377530	-104.5816421	0.00	
17022.00†	90.075	354.547	7994.74	8587.77	8565.50	648.60	3253728.12	1585889.92	40.9380262	-104.5816765	0.00	

REFERENCE WELLPATH IDENTIFICATION			
Operator	CCRP OPERATING INC.	Well	SALT RANCH FEE 201-1807H
Field	WELD COUNTY (NAD 83/TN)	API/Legal	
Facility	SEC.18-T11N-R64W	Wellbore	SALT RANCH FEE 201-1807H PWB
Slot	SLOT#01 SALT RANCH FEE 201-1807H (331'FSL & 938'FEL, SEC.18)		

WELLPATH DATA (194 stations) † = interpolated, ‡ = extrapolated station												
MD [ft]	Inclination [°]	Azimuth [°]	TVD [ft]	Vert Sect [ft]	North [ft]	East [ft]	Grid East [US ft]	Grid North [US ft]	Latitude	Longitude	DLS [°/100ft]	Comments
17122.00†	90.075	354.547	7994.61	8686.68	8665.05	639.10	3253717.59	1585989.36	40.9382994	-104.5817109	0.00	
17222.00†	90.075	354.547	7994.48	8785.59	8764.59	629.59	3253707.05	1586088.81	40.9385726	-104.5817453	0.00	
17322.00†	90.075	354.547	7994.35	8884.50	8864.14	620.09	3253696.52	1586188.25	40.9388459	-104.5817797	0.00	
17422.00†	90.075	354.547	7994.22	8983.41	8963.69	610.59	3253685.99	1586287.70	40.9391191	-104.5818140	0.00	
17522.00†	90.075	354.547	7994.09	9082.32	9063.24	601.08	3253675.46	1586387.15	40.9393923	-104.5818484	0.00	
17622.00†	90.075	354.547	7993.96	9181.22	9162.78	591.58	3253664.93	1586486.59	40.9396655	-104.5818828	0.00	
17722.00†	90.075	354.547	7993.83	9280.13	9262.33	582.08	3253654.40	1586586.04	40.9399387	-104.5819172	0.00	
17822.00†	90.075	354.547	7993.70	9379.04	9361.88	572.57	3253643.86	1586685.48	40.9402120	-104.5819516	0.00	
17922.00†	90.075	354.547	7993.57	9477.95	9461.42	563.07	3253633.33	1586784.93	40.9404852	-104.5819860	0.00	
18022.00†	90.075	354.547	7993.44	9576.86	9560.97	553.56	3253622.80	1586884.38	40.9407584	-104.5820204	0.00	
18122.00†	90.075	354.547	7993.30	9675.77	9660.52	544.06	3253612.27	1586983.82	40.9410316	-104.5820548	0.00	
18222.00†	90.075	354.547	7993.17	9774.67	9760.07	534.56	3253601.74	1587083.27	40.9413049	-104.5820892	0.00	
18322.00†	90.075	354.547	7993.04	9873.58	9859.61	525.05	3253591.21	1587182.71	40.9415781	-104.5821236	0.00	
18355.28	90.075	354.547	7993.00 [‡]	9906.50	9892.74	521.89	3253587.70	1587215.81	40.9416690	-104.5821350	0.00	TD

REFERENCE WELLPATH IDENTIFICATION			
Operator	CCRP OPERATING INC.	Well	SALT RANCH FEE 201-1807H
Field	WELD COUNTY (NAD 83/TN)	API/Legal	
Facility	SEC.18-T11N-R64W	Wellbore	SALT RANCH FEE 201-1807H PWB
Slot	SLOT#01 SALT RANCH FEE 201-1807H (331'FSL & 938'FEL, SEC.18)		

TARGETS									
Name	MD [ft]	TVD [ft]	North [ft]	East [ft]	Grid East [US ft]	Grid North [US ft]	Latitude	Longitude	Shape
SEC.07-T11N-R64W SECTION LINES	N/A	0.00	0.00	0.00	3253168.01	1577317.99	40.9145170	-104.5840240	polygon
2D Polygon: dimensions not calculated									
SEC.18-T11N-R64W SECTION LINES	N/A	0.00	0.00	0.00	3253168.01	1577317.99	40.9145170	-104.5840240	polygon
2D Polygon: dimensions not calculated									
SALT RANCH FEE 201-1807H BHL REV-2 (300'FNL & 350'FEL, SEC.07)	N/A	7990.90	9892.74	521.89	3253587.70	1587215.81	40.9416690	-104.5821350	point
3) SALT RANCH FEE 201-1807H BHL REV-3 (300'FNL & 350'FEL, SEC.07)	18355.28	7993.00	9892.74	521.89	3253587.70	1587215.81	40.9416690	-104.5821350	point
2) SALT RANCH FEE 201-1807H WP REV-1 (0'FSL & 350'FEL, SEC.07)	13392.81	7999.48	4951.11	947.55	3254064.39	1582278.73	40.9281060	-104.5805950	point
SALT RANCH FEE 201-1807H LP REV-2 (300'FSL & 350'FEL, SEC.18)	N/A	8000.90	-2.47	620.49	3253788.51	1577321.92	40.9145102	-104.5817790	point
SALT RANCH FEE 201-1807H BHL REV-1 (300'FNL & 350'FEL, SEC.07)	N/A	8001.90	9892.74	521.89	3253587.70	1587215.81	40.9416690	-104.5821350	point
SALT RANCH FEE 201-1807H LP REV-1 (735'FSL & 350'FEL, SEC.18)	N/A	8001.90	420.10	620.49	3253784.14	1577744.48	40.9156700	-104.5817790	point
SALT RANCH FEE 201-1807H LP ON PLAT (300'FSL & 350'FEL, SEC.18)	N/A	8006.00	-15.66	588.99	3253757.15	1577308.41	40.9144740	-104.5818930	point
1) SALT RANCH FEE 201-1807H LP REV-3 (300'FSL & 410'FEL, SEC.18)	8408.43	8006.00	-15.66	528.99	3253697.15	1577307.79	40.9144740	-104.5821101	point
SEC.07/18-T11N-R64W HARDLINES (300' SETBACKS)	N/A	8010.00	0.00	0.00	3253168.01	1577317.99	40.9145170	-104.5840240	polygon
2D Polygon: dimensions not calculated									

SURVEY PROGRAM -						
Start MD [ft]		End MD [ft]		Positional Uncertainty Model	Log Name/Comment	Wellbore
22.00		1950.00		BH NaviTrak (2019) (Axial)		SALT RANCH FEE 201-1807H PWB
1950.00		18355.28		BH AutoTrak Curve/eXpress (2019) (Short spacing)		SALT RANCH FEE 201-1807H PWB

REFERENCE WELLPATH IDENTIFICATION			
Operator	CCRP OPERATING INC.	Well	SALT RANCH FEE 201-1807H
Field	WELD COUNTY (NAD 83/TN)	API/Legal	
Facility	SEC.18-T11N-R64W	Wellbore	SALT RANCH FEE 201-1807H PWB
Slot	SLOT#01 SALT RANCH FEE 201-1807H (331'FSL & 938'FEL, SEC.18)		

DESIGN COMMENTS				
MD [ft]	Inclination [°]	Azimuth [°]	TVD [ft]	Comment
22.00	0.000	140.695	22.00	Tie On
250.00	0.000	140.695	250.00	End of Tangent
1050.00	12.000	140.695	1044.16	End of Build (J)
3998.23	12.000	140.695	3927.97	End of Tangent (J)
4598.23	0.000	4.817	4523.59	End of Drop
7507.68	0.000	4.817	7433.04	KOP
8408.43	90.075	4.817	8006.00	LANDING
13392.81	90.075	4.817	7999.48	WP
13906.34	90.075	354.547	7998.81	3D Arc (J)
18355.28	90.075	354.547	7993.00	TD



Closest Approach Clearance Summary Report

SALT RANCH FEE 201-1807H PWP Rev-C.0 - SPE WPTS
Stop Drilling HSE Risk (2017)

Page 1 of 2



REFERENCE WELLPATH IDENTIFICATION

Operator	CCRP OPERATING INC.	Well	SALT RANCH FEE 201-1807H
Field	WELD COUNTY (NAD 83/TN)	API/Legal	
Facility	SEC.18-T11N-R64W	Wellbore	SALT RANCH FEE 201-1807H PWB
Slot	SLOT#01 SALT RANCH FEE 201-1807H (331'FSL & 938'FEL, SEC.18)		

REPORT SETUP INFORMATION

Projection System	NAD83 / Lambert Colorado SP, Northern Zone (501), US feet	Software System	WellArchitect® 6.0
North Reference	True	User	Painsetr
Scale	1.000024	Report Generated	9/22/2020 at 6:39:14 PM
Convergence at slot	0.59° East	Database	WellArchitectDB

WELLPATH LOCATION

	Local coordinates		Grid coordinates		Geographic coordinates	
	North[ft]	East[ft]	Easting[US ft]	Northing[US ft]	Latitude	Longitude
Slot Location	9.53	37.59	3253168.02	1577317.99	40.9145170°	-104.5840240°
Facility Reference Pt			3253130.53	1577308.07	40.9144908°	-104.5841600°
Field Reference Pt			3242001.26	1607883.12	40.9987100°	-104.6233300°

WELLPATH DATUM

Calculation method	Minimum Curvature	RIG (22') (RKB) to Facility Vertical Datum	5626.00ft
Horizontal Reference Pt	Slot	RIG (22') (RKB) to Mean Sea Level	5626.00ft
Vertical Reference Pt	RIG (22') (RKB)	RIG (22') (RKB) to Mud Line at Slot (SLOT#01 SALT RANCH FEE 201-1807H (331'FSL & 938'FEL, SEC.18))	5626.00ft
MD Reference Pt	RIG (22') (RKB)		
Field Vertical Reference	Mean Sea Level		

POSITIONAL UNCERTAINTY CALCULATION SETTINGS

Ellipse Confidence Limit	3.50 Std Dev	Ellipse Start MD	22.00ft	Surface Position Uncertainty	included
Declination	8.11° East of TN	Dip Angle	67.12°	Mag Field Strength	52436 nT
Slot Surface Uncertainty @1SD		Horizontal	0.100ft	Vertical	1.000ft
Facility Surface Uncertainty @1SD		Horizontal	8.200ft	Vertical	3.000ft

Positional Uncertainty values in the WELLPATH DATA table are the projection of the ellipsoid of uncertainty onto the vertical and horizontal planes



Closest Approach Clearance Summary Report

**SALT RANCH FEE 201-1807H PWP Rev-C.0 - SPE WPTS
Stop Drilling HSE Risk (2017)**

Page 2 of 2



REFERENCE WELLPATH IDENTIFICATION			
Operator	CCRP OPERATING INC.	Well	SALT RANCH FEE 201-1807H
Field	WELD COUNTY (NAD 83/TN)	API/Legal	
Facility	SEC.18-T11N-R64W	Wellbore	SALT RANCH FEE 201-1807H PWB
Slot	SLOT#01 SALT RANCH FEE 201-1807H (331'FSL & 938'FEL, SEC.18)		

PROXIMITY-SCAN RULE			
Rule Name	SPE WPTS Stop Drilling HSE Risk (2017)	Rule Based On	Ratio
Plane of Rule	Closest Approach	Threshold Value	1.00
Include Casing & Hole Size	yes	Apply Cone of Safety	no

SURVEY PROGRAM -				
Ref Wellbore: SALT RANCH FEE 201-1807H PWB		Ref Wellpath: SALT RANCH FEE 201-1807H PWP Rev-C.0		
Start MD [ft]	End MD [ft]	Positional Uncertainty Model	Log Name/Comment	Wellbore
22.00	1950.00	BH NaviTrak (2019) (Axial)		SALT RANCH FEE 201-1807H PWB
1950.00	18355.28	BH AutoTrak Curve/eXpress (2019) (Short spacing)		SALT RANCH FEE 201-1807H PWB

CALCULATION RANGE & CUTOFF		
From: 22.00ft MD	To: 18355.28ft MD	C-C Cutoff: (none)

OFFSET WELL CLEARANCE SUMMARY (7 Offset Wellpaths selected) Ratios are calculated in Closest Approach plane													
Offset Facility	Offset Slot	Offset Well	Offset Wellbore	Offset Wellpath	Wellbore Status	C-C Clearance Distance			Rule Separation Ratio				
						Ref MD [ft]	Min C-C Clear Dist [ft]	Diverging from MD [ft]	Ref MD of Min Ratio [ft]	Min Ratio	Min Ratio Dvrg from [ft]	Rule Status	
SEC.18-T11N-R64W	SLOT#02 SALT RANCH FEE 201-1830H (332'FSL & 953'FEL, SEC.18)	SALT RANCH FEE 201-1830H	SALT RANCH FEE 201-1830H PWB	SALT RANCH FEE 201-1830H PWP Rev-C.0	Planned	501.85	13.40	8101.01	8101.01	1.05	11922.00	WARN	
SEC.18-T11N-R64W	SLOT#03 SALT RANCH FEE 501-1807H (333'FSL & 968'FEL, SEC.18)	SALT RANCH FEE 501-1807H	SALT RANCH FEE 501-1807H PWB	SALT RANCH FEE 501-1807H PWP Rev-C.0	Planned	22.00	29.85	18355.28	18355.28	1.75	18355.28	PASS	
SEC.18-T11N-R64W	SLOT#05 SALT RANCH FEE 202-1807H (334'FSL & 998'FEL, SEC.18)	SALT RANCH FEE 202-1807H	SALT RANCH FEE 202-1807H PWB	SALT RANCH FEE 202-1807H PWP Rev-A.0	Planned	22.00	59.98	18355.28	18355.28	3.27	18355.28	PASS	
SEC.18-T11N-R64W	SLOT#07 SALT RANCH FEE 502-1807H (335'FSL & 1028'FEL, SEC.18)	SALT RANCH FEE 502-1807H	SALT RANCH FEE 502-1807H PWB	SALT RANCH FEE 502-1807H PWP Rev-A.0	Planned	22.00	89.83	18355.28	18355.28	4.98	18355.28	PASS	
SEC.18-T11N-R64W	SLOT#04 SALT RANCH FEE 501-1830H (333'FSL & 983'FEL, SEC.18)	SALT RANCH FEE 501-1830H	SALT RANCH FEE 501-1830H PWB	SALT RANCH FEE 501-1830H PWP Rev-C.0	Planned	22.00	45.06	8222.00	408.47	6.47	8222.00	PASS	
SEC.18-T11N-R64W	SLOT#06 SALT RANCH FEE 202-1830H (334'FSL & 1013'FEL, SEC.18)	SALT RANCH FEE 202-1830H	SALT RANCH FEE 202-1830H PWB	SALT RANCH FEE 202-1830H PWP Rev-A.0	Planned	22.00	74.91	8022.00	409.31	11.16	14022.00	PASS	
SEC.18-T11N-R64W	SLOT#08 SALT RANCH FEE 502-1830H (335'FSL & 1043'FEL, SEC.18)	SALT RANCH FEE 502-1830H	SALT RANCH FEE 502-1830H PWB	SALT RANCH FEE 502-1830H PWP Rev-A.0	Planned	22.00	105.03	8122.00	522.00	15.31	10222.00	PASS	

