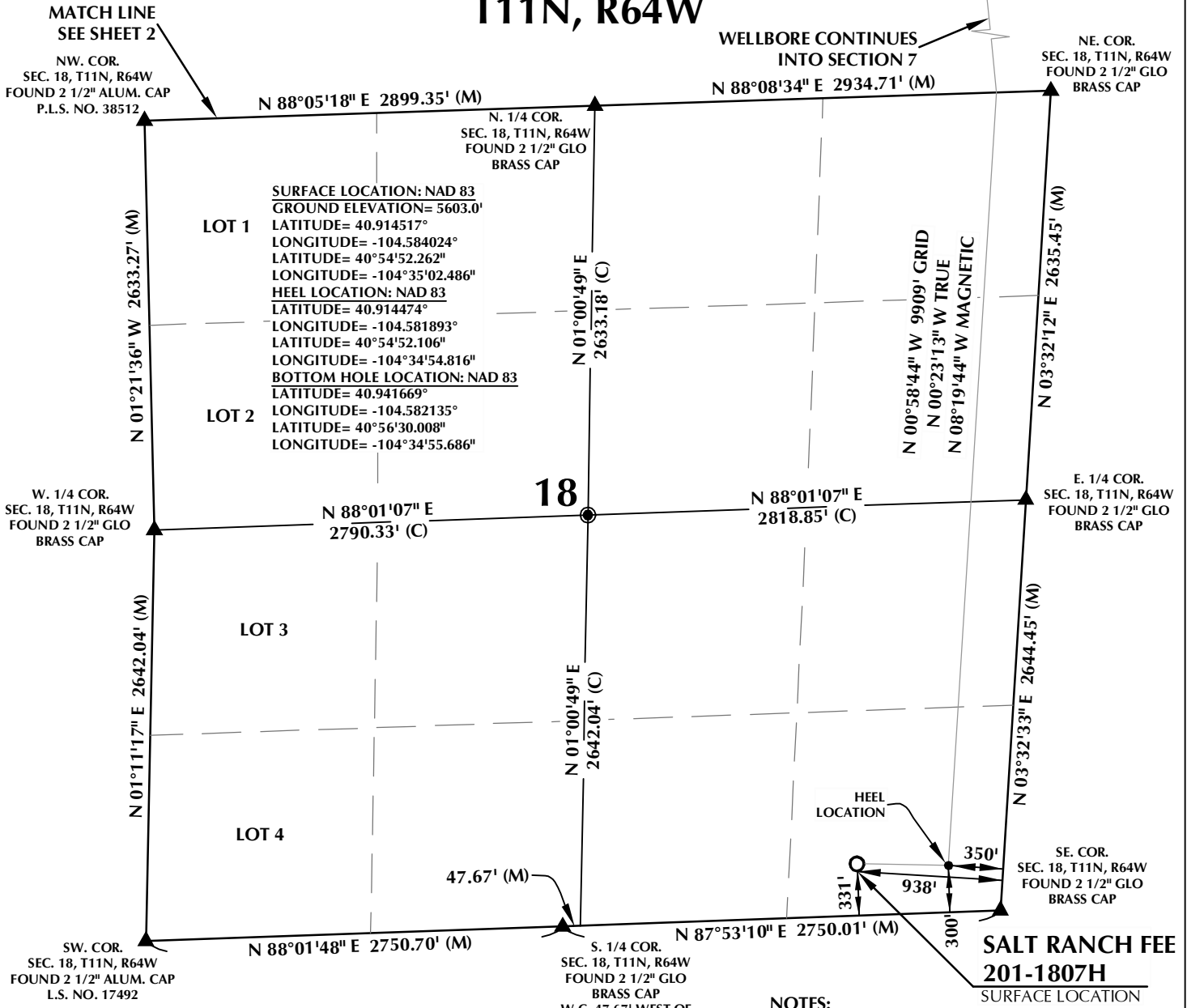


# T11N, R64W

WELLBORE CONTINUES INTO SECTION 7



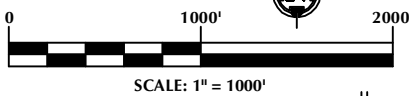
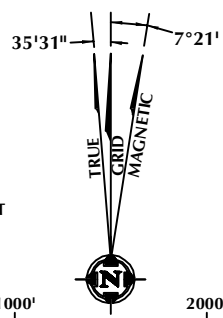
## CERTIFICATE OF SURVEYOR:

THIS IS TO CERTIFY THAT THE ABOVE PLAT WAS PREPARED FROM FIELD NOTES OF ACTUAL SURVEYS MADE BY ME OR UNDER MY SUPERVISION AND TO THE SAME ARE TRUE AND CORRECT TO THE BEST OF MY KNOWLEDGE AND BELIEF. THIS CERTIFICATE DOES NOT REPRESENT A LAND SURVEY PLAT OR IMPROVEMENT SURVEY PLAT AS DEFINED BY C.R.S. 8-31-102 AND CANNOT BE RELIED UPON TO DETERMINE OWNERSHIP.

*Randall K. French*  
 RANDALL K. FRENCH  
 PROFESSIONAL LAND SURVEYOR  
 COLORADO REGISTRATION NUMBER 38512  
 9/18/2020

NOTICE: ACCORDING TO COLORADO STATE LAW YOU MUST TAKE IMMEDIATE LEGAL ACTION BASED UPON ANY DEFECT IN THIS SURVEY WITHIN THREE YEARS AFTER YOU FIRST DISCOVER SUCH DEFECT. IN NO EVENT MAY ANY ACTION BASED UPON ANY DEFECT IN THIS SURVEY BE COMMENCED MORE THAN TEN YEARS FROM THE DATE ON THE CERTIFICATION SHOWN HEREON.

NOTE:  
 MAGNETIC NORTH IS CURRENT AS OF 1/27/2020. MAGNETIC NORTH CHANGES WEST 0°06' PER YEAR.  
 MAGNETIC MODEL: WMM-2020.



## NOTES:

- ▲ INDICATES SECTION CORNER.
- INDICATES CALCULATED CORNER.
- DRAWING LATITUDE AND LONGITUDE COORDINATES ARE NAD 83 (2011)(EPOCH:2010).
- ELEVATION BASED ON NAVD88 (GEOID12B).
- BASIS OF BEARING DERIVED FROM COLORADO COORDINATE SYSTEM OF 1983 NORTH ZONE.
- ALL MEASURED DISTANCES ARE GRID.
- COMBINED SCALE FACTOR: .99975873 CALCULATED FROM THE SE. CORNER OF SECTION 18, T11N, R64W.
- OPERATOR: ROB WILSON / PDOP = 1.5.
- SEE ADDENDUM TO WELL LOCATION CERTIFICATE FOR EXISTING IMPROVEMENTS WITHIN 500' OF THE WELL PAD.
- WELL FOOTAGES ARE MEASURED AT RIGHT ANGLES TO THE SECTION LINES.
- THE BOTTOM OF HOLE BEARS N00°58'44"W, 9909' FROM THE HEEL LOCATION.

## WELL PAD - SALT RANCH FEE 18 EAST

SALT RANCH FEE 201-1807H  
 WELL LOCATION CERTIFICATE  
 331' FSL & 938' FEL SESE (SURFACE)  
 300' FSL & 350' FEL SESE (HEEL)  
 LOCATED IN SECTION 18  
 300' FNL & 350' FEL NENE (BOTTOM)  
 LOCATED IN SECTION 7  
 T11N, R64W.6TH P.M.  
 WELD COUNTY, COLORADO

**CLEAR CREEK**  
 Resource Partners  
 717 17th Street, Suite 1525  
 Denver, Colorado 80202



## CONSULTING, LLC

SHERIDAN OFFICE  
 1095 Saberton Avenue  
 Sheridan, Wyoming 82801  
 Phone 307-674-0609

LOVELAND OFFICE  
 6706 North Franklin Avenue  
 Loveland, Colorado 80538  
 Phone 970-776-4331

DRAFTED BY:	LMO	CHECKED BY:	RKF	SHEET NO:
DATE DRAFTED:	10/17/17	DATE SURVEYED:	1/27/2020	1
REVISED:	9/18/2020	FILE NAME:	17-127	1 OF 2

# T11N, R64W

N. 1/4 COR.  
SEC. 7, T11N, R64W  
FOUND 3 1/4" ALUM. CAP  
P.L.S. NO. 32832

NE. COR.  
SEC. 7, T11N, R64W  
FOUND 2 1/2" GLO  
BRASS CAP

NW. COR.  
SEC. 7, T11N, R64W  
FOUND 2 1/2" GLO  
BRASS CAP

N 00°09'13" W 2627.40' (M)

N 88°15'41" E 2737.45' (M)

N 88°35'15" E 2637.23' (M)

**LOT 1**  
SURFACE LOCATION: NAD 83  
GROUND ELEVATION= 5603.0'  
LATITUDE= 40.914517°  
LONGITUDE= -104.584024°  
LATITUDE= 40°54'52.262"  
LONGITUDE= -104°35'02.486"  
HEEL LOCATION: NAD 83  
LATITUDE= 40.914474°  
LONGITUDE= -104.581893°  
LATITUDE= 40°54'52.106"  
LONGITUDE= -104°34'54.816"  
**LOT 2**  
BOTTOM HOLE LOCATION: NAD 83  
LATITUDE= 40.941669°  
LONGITUDE= -104.582135°  
LATITUDE= 40°56'30.008"  
LONGITUDE= -104°34'55.686"

BOTTOM OF HOLE:  
300' FNL & 350' FEL

N 02°16'28" W  
2635.35' (C)

N 05°25'20" W 2634.35' (M)

W. 1/4 COR.  
SEC. 7, T11N, R64W  
FOUND 2 1/2" GLO  
BRASS CAP

N 88°26'24" E  
2834.78' (C)

N 88°26'24" E  
2781.80' (C)

E. 1/4 COR.  
SEC. 7, T11N, R64W  
FOUND 2 1/2" GLO  
BRASS CAP

N 00°52'29" W 2650.22' (M)

LOT 3

N 02°16'28" W  
2632.44' (C)

N 00°58'44" W 9909' GRID  
N 00°23'13" W TRUE  
N 08°19'44" W MAGNETIC

N 05°37'07" W 2623.58' (M)

SW. COR.  
SEC. 7, T11N, R64W  
FOUND 2 1/2" ALUM. CAP  
P.L.S. NO. 38512

N 88°05'18" E 2899.35' (M)

S. 1/4 COR.  
SEC. 7, T11N, R64W  
FOUND 2 1/2" GLO  
BRASS CAP

N 88°08'34" E 2934.71' (M)

SE. COR.  
SEC. 7, T11N, R64W  
FOUND 2 1/2" GLO  
BRASS CAP

MATCH LINE  
SEE SHEET 1

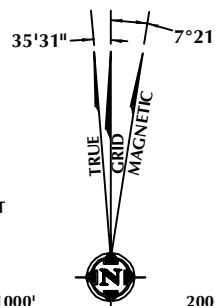
## CERTIFICATE OF SURVEYOR:

THIS IS TO CERTIFY THAT THE ABOVE PLAT WAS PREPARED FROM FIELD NOTES OF ACTUAL SURVEY MADE BY ME OR UNDER MY SUPERVISION AND TO THE SAME ARE TRUE AND CORRECT TO THE BEST OF MY KNOWLEDGE AND BELIEF. THIS CERTIFICATE DOES NOT REPRESENT A LAND SURVEY PLAT OR IMPROVEMENT SURVEY PLAT AS DEFINED BY C.R.S. 8-31-102 AND CANNOT BE RELIED UPON TO DETERMINE OWNERSHIP.

*Randall K. French*  
38512  
PROFESSIONAL LAND SURVEYOR  
9/18/2020  
RANDALL K. FRENCH  
PROFESSIONAL LAND SURVEYOR  
COLORADO REGISTRATION NUMBER 38512

NOTICE:  
ACCORDING TO COLORADO STATE LAW YOU MUST BE PROMPTLY TAKEN LEGAL ACTION BASED UPON ANY DEFECT IN THIS SURVEY WITHIN THREE YEARS AFTER YOU FIRST DISCOVER SUCH DEFECT. IN NO EVENT MAY ANY ACTION BASED UPON ANY DEFECT IN THIS SURVEY BE COMMENCED MORE THAN TEN YEARS FROM THE DATE ON THE CERTIFICATION SHOWN HEREON.

NOTE:  
MAGNETIC NORTH IS  
CURRENT AS OF  
1/27/2020. MAGNETIC  
NORTH CHANGES WEST  
0°06' PER YEAR.  
MAGNETIC MODEL:  
WMM-2020.



SCALE: 1" = 1000'

## NOTES:

- ▲ INDICATES SECTION CORNER.
- INDICATES CALCULATED CORNER.
- DRAWING LATITUDE AND LONGITUDE COORDINATES ARE NAD 83 (2011)(EPOCH:2010).
- ELEVATION BASED ON NAVD88 (GEOID12B).
- BASIS OF BEARING DERIVED FROM COLORADO COORDINATE SYSTEM OF 1983 NORTH ZONE.
- ALL MEASURED DISTANCES ARE GRID.
- COMBINED SCALE FACTOR: .99975873 CALCULATED FROM THE SE. CORNER OF SECTION 18, T11N, R64W.
- OPERATOR: ROB WILSON / PDOP = 1.5.
- SEE ADDENDUM TO WELL LOCATION CERTIFICATE FOR EXISTING IMPROVEMENTS WITHIN 500' OF THE WELL PAD.
- WELL FOOTAGES ARE MEASURED AT RIGHT ANGLES TO THE SECTION LINES.
- THE BOTTOM OF HOLE BEARS N00°58'44"W, 9909' FROM THE HEEL LOCATION.

## WELL PAD - SALT RANCH FEE 18 EAST

SALT RANCH FEE 201-1807H  
WELL LOCATION CERTIFICATE  
331' FSL & 938' FEL SESE (SURFACE)  
300' FSL & 350' FEL SESE (HEEL)  
LOCATED IN SECTION 18  
300' FNL & 350' FEL NENE (BOTTOM)  
LOCATED IN SECTION 7  
T11N, R64W.6TH P.M.  
WELD COUNTY, COLORADO



**CLEAR CREEK**  
Resource Partners

717 17th Street, Suite 1525  
Denver, Colorado 80202



## CONSULTING, LLC

SHERIDAN OFFICE  
1095 Saberton Avenue  
Sheridan, Wyoming 82801  
Phone 307-674-0609

LOVELAND OFFICE  
6706 North Franklin Avenue  
Loveland, Colorado 80538  
Phone 970-776-4331

DRAFTED BY:	LMO	CHECKED BY:	RKF	SHEET NO:
DATE DRAFTED:	10/17/17	DATE SURVEYED:	1/27/2020	2
REVISED:	9/18/2020	FILE NAME:	17-127	2 OF 2