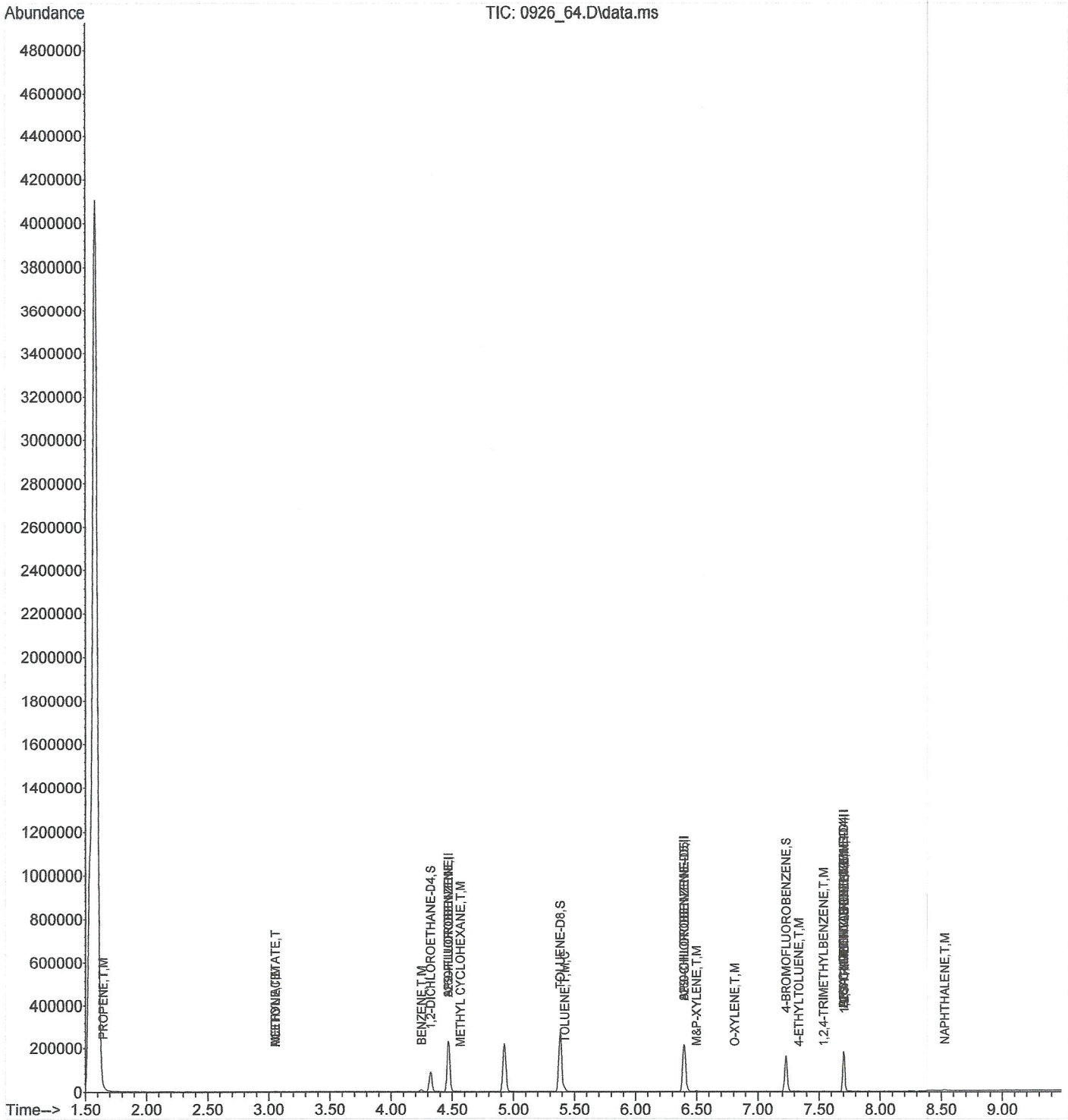
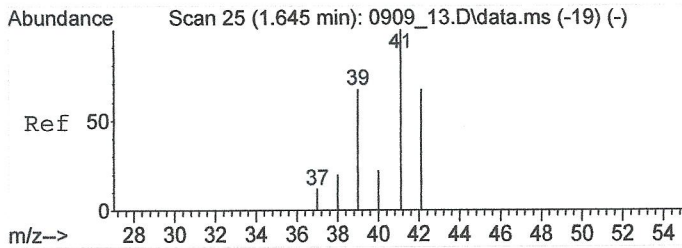


Data Path : C:\msdchem\1\data\092620\  
Data File : 0926 64.D  
Acq On : 27 Sep 2020 6:49 am  
Operator : 3527  
Sample : L1265781-02 1x WG1549996  
Misc : water  
ALS Vial : 59 Sample Multiplier: 1  
InstName : VOCMS20

AC 35-06 WH

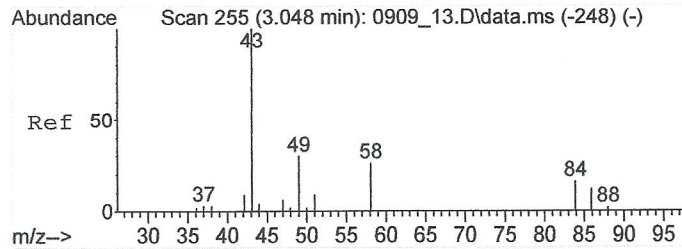
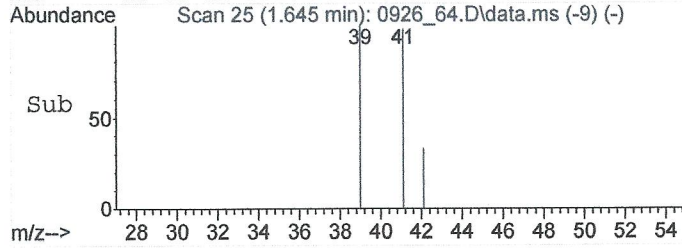
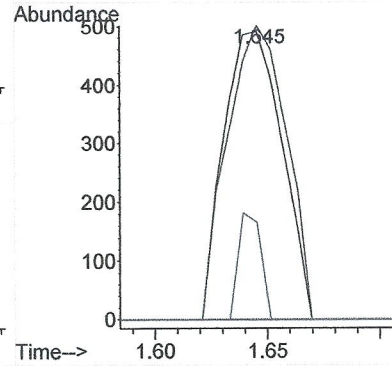
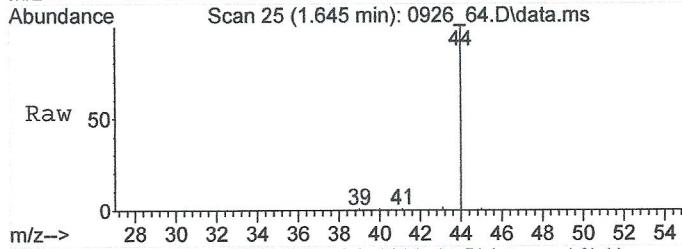
Quant Time: Sep 28 08:21:37 2020  
Quant Method : C:\msdchem\1\methods\V820I09T.M  
Quant Title : Volatile Organics by GC/MS  
QLast Update : Thu Sep 10 08:56:06 2020  
Response via : Initial Calibration





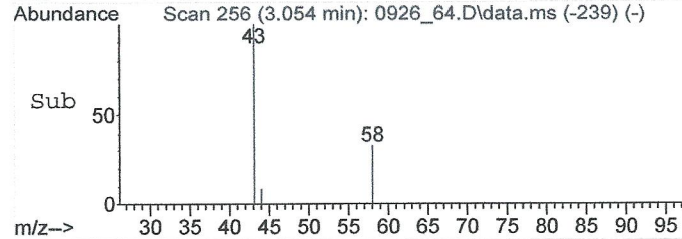
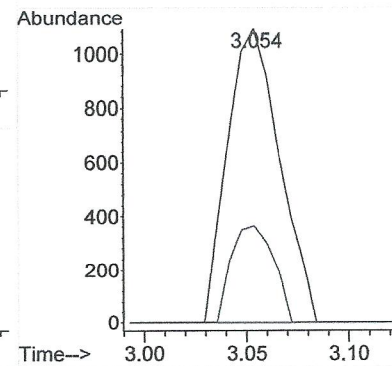
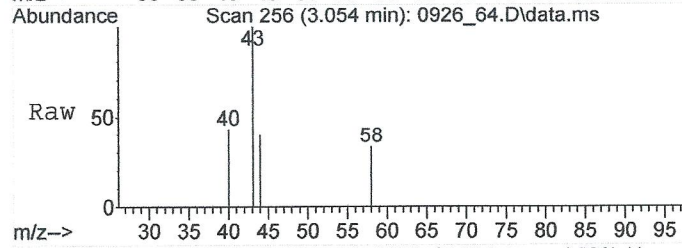
#4  
 PROPENE  
 Concen: 1.0262438 ppb  
 RT: 1.645 min Scan# 25  
 Delta R.T. 0.000 min  
 Lab File: 0926\_64.D  
 Acq: 27 Sep 2020 6:49 am

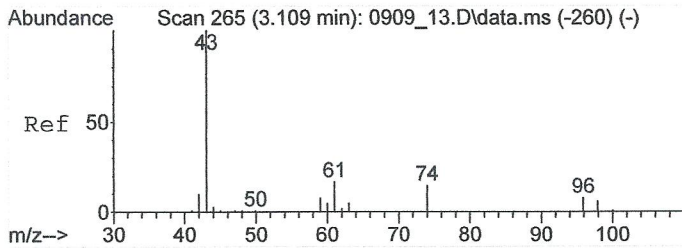
Tgt Ion	Resp	Lower	Upper
41	885		
39	103.4	58.5	87.7#
42	0.0	52.7	79.1#



#19  
 ACETONE  
 Concen: 1.7881424 ppb  
 RT: 3.054 min Scan# 256  
 Delta R.T. 0.007 min  
 Lab File: 0926\_64.D  
 Acq: 27 Sep 2020 6:49 am

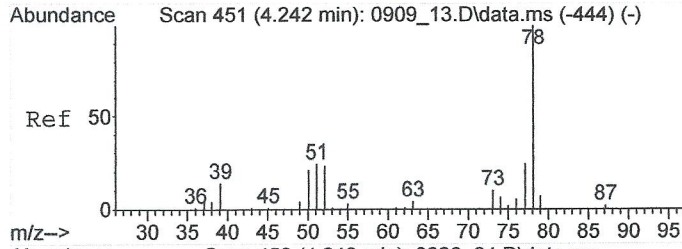
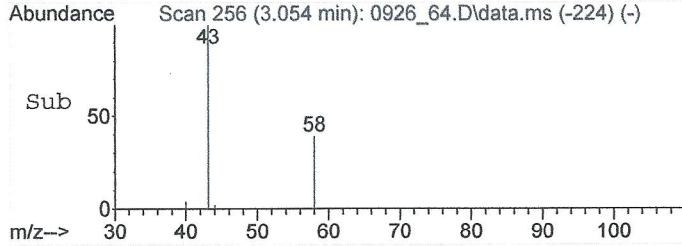
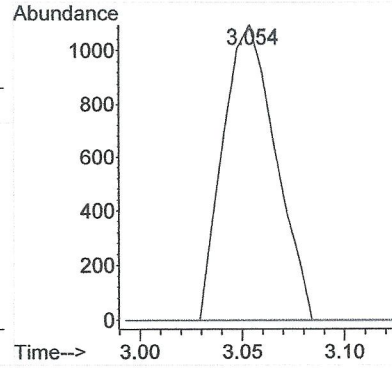
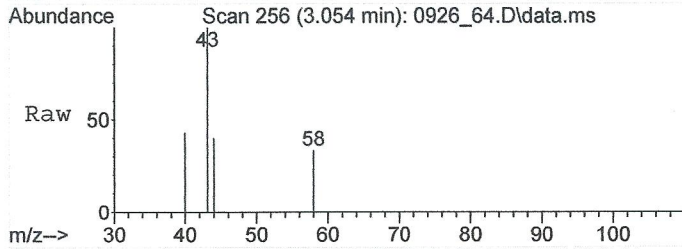
Tgt Ion	Resp	Lower	Upper
43	1946		
58	27.1	22.2	33.2





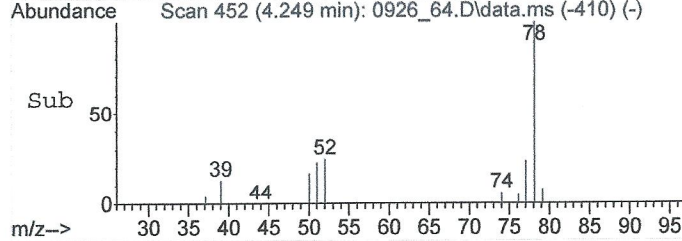
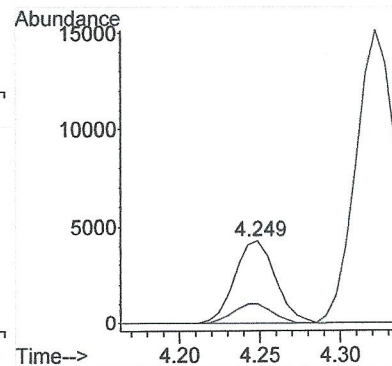
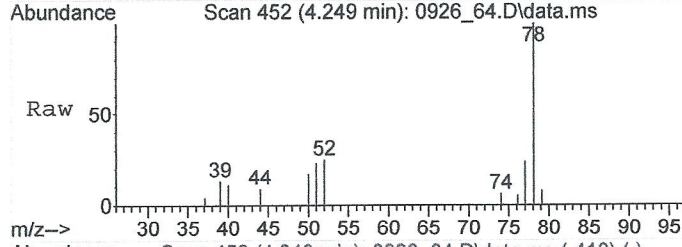
#24  
 METHYL ACETATE  
 Concen: 0.7381355 ppb  
 RT: 3.054 min Scan# 256  
 Delta R.T. -0.055 min  
 Lab File: 0926\_64.D  
 Acq: 27 Sep 2020 6:49 am

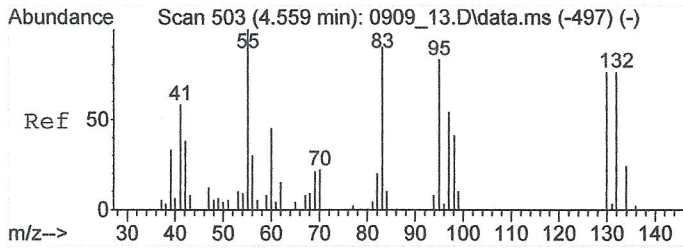
Tgt Ion	Resp	Lower	Upper
43	1946		
74	0.0	12.3	18.5#
29	0.0	0.0	0.0



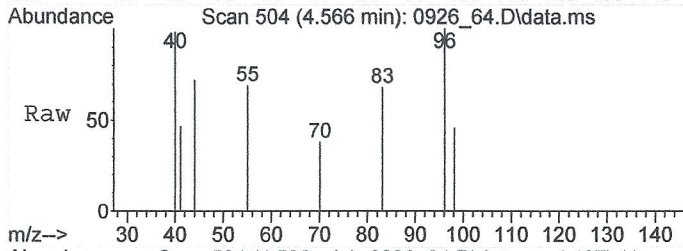
#46  
 BENZENE  
 Concen: 0.5791038 ppb  
 RT: 4.249 min Scan# 452  
 Delta R.T. 0.006 min  
 Lab File: 0926\_64.D  
 Acq: 27 Sep 2020 6:49 am

Tgt Ion	Resp	Lower	Upper
78	7478		
51	22.5	18.2	27.2

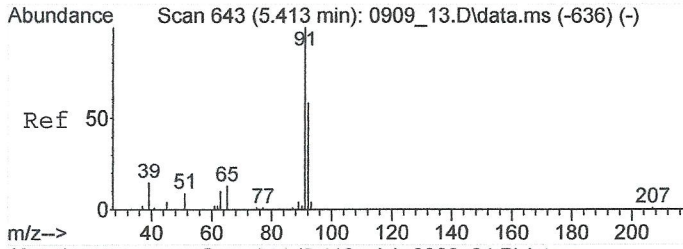
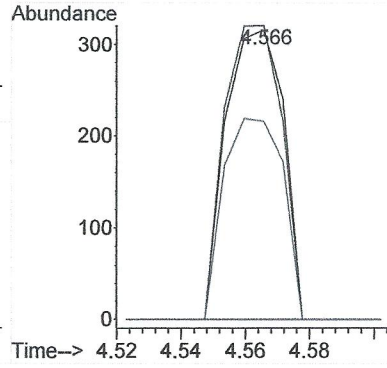
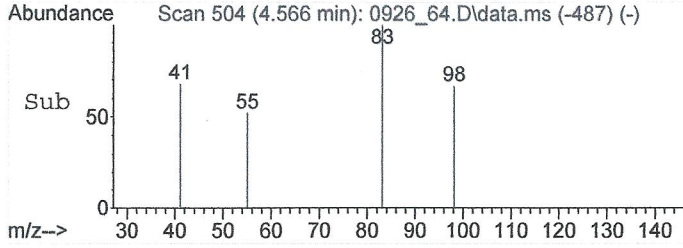




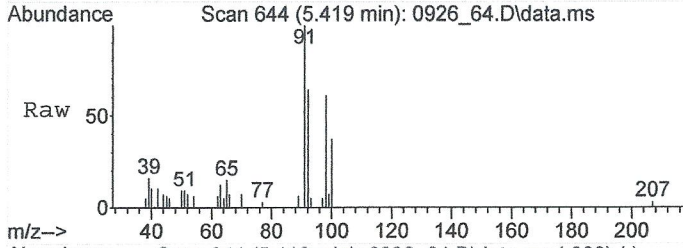
#52  
 METHYL CYCLOHEXANE  
 Concen: 0.5014302 ppb  
 RT: 4.566 min Scan# 504  
 Delta R.T. 0.007 min  
 Lab File: 0926\_64.D  
 Acq: 27 Sep 2020 6:49 am



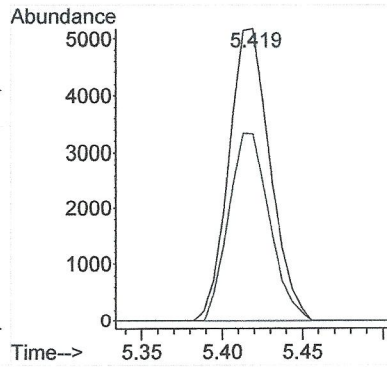
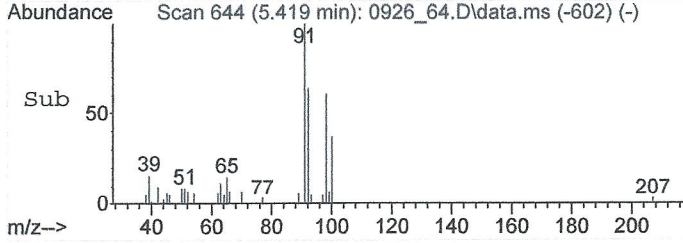
Tgt Ion: 83 Resp: 395  
 Ion Ratio Lower Upper  
 83 100  
 55 100.8 91.3 136.9  
 41 71.6 52.8 79.2

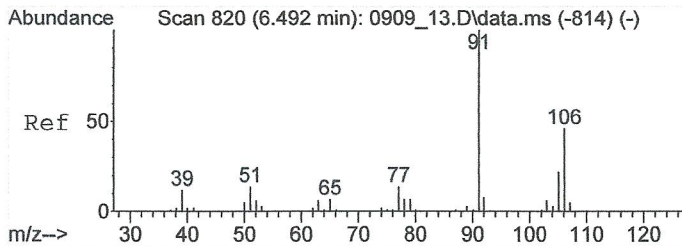


#62  
 TOLUENE  
 Concen: 0.7256453 ppb  
 RT: 5.419 min Scan# 644  
 Delta R.T. 0.007 min  
 Lab File: 0926\_64.D  
 Acq: 27 Sep 2020 6:49 am



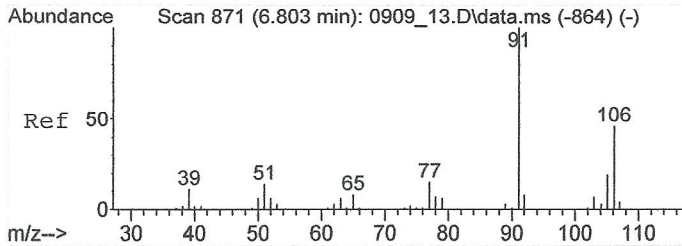
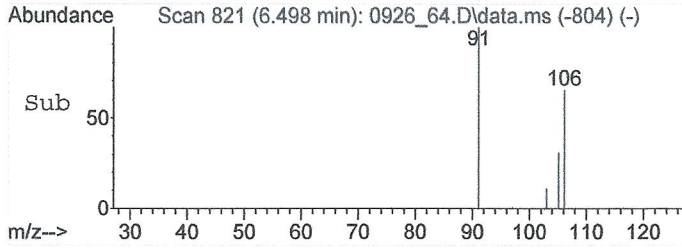
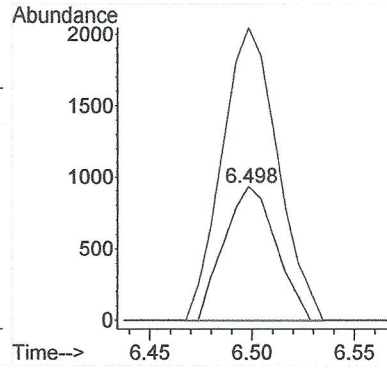
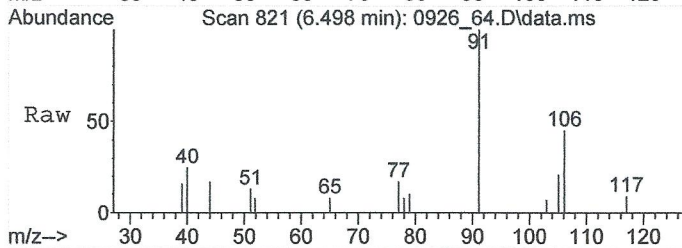
Tgt Ion: 91 Resp: 9279  
 Ion Ratio Lower Upper  
 91 100  
 92 63.8 46.6 69.8





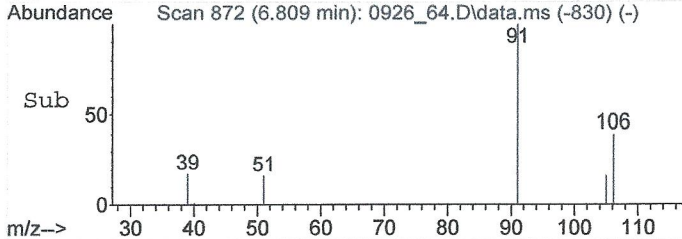
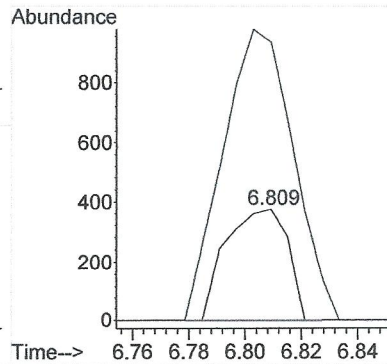
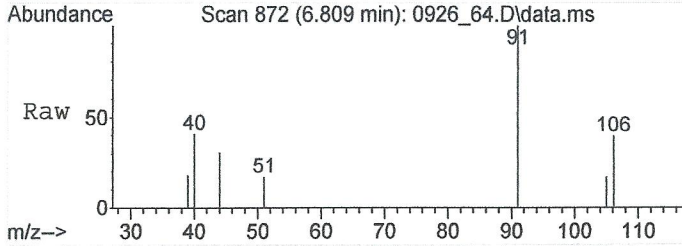
#73  
M&P-XYLENE  
Concen: 0.3253351 ppb  
RT: 6.498 min Scan# 821  
Delta R.T. 0.006 min  
Lab File: 0926\_64.D  
Acq: 27 Sep 2020 6:49 am

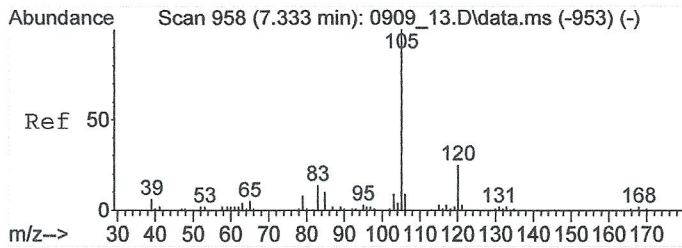
Tgt Ion:106 Resp: 1643  
Ion Ratio Lower Upper  
106 100  
91 235.3 172.6 259.0



#74  
O-XYLENE  
Concen: 0.1128562 ppb  
RT: 6.809 min Scan# 872  
Delta R.T. 0.007 min  
Lab File: 0926\_64.D  
Acq: 27 Sep 2020 6:49 am

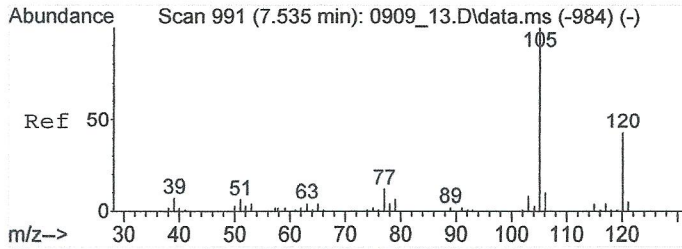
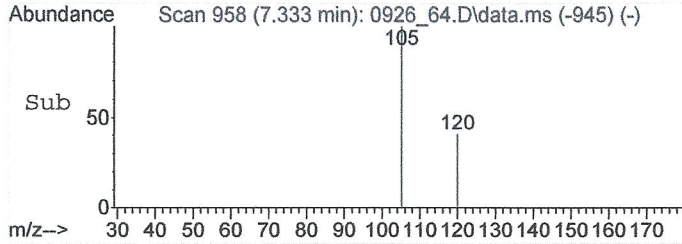
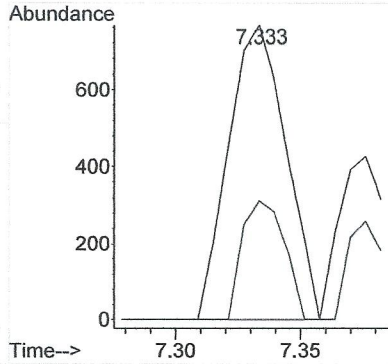
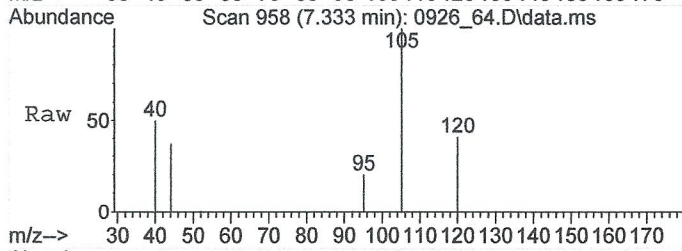
Tgt Ion:106 Resp: 572  
Ion Ratio Lower Upper  
106 100  
91 299.3 175.0 262.4#





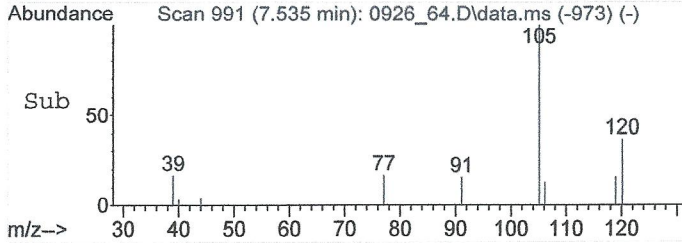
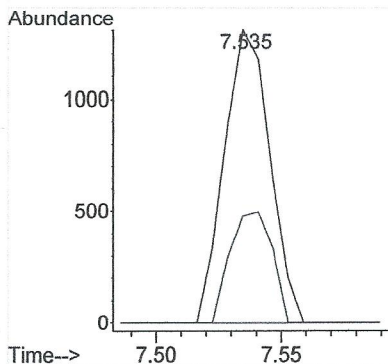
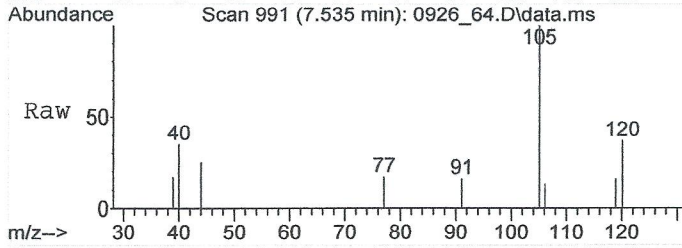
#87  
 4-ETHYLTOLUENE  
 Concen: 0.1180407 ppb  
 RT: 7.333 min Scan# 958  
 Delta R.T. 0.000 min  
 Lab File: 0926\_64.D  
 Acq: 27 Sep 2020 6:49 am

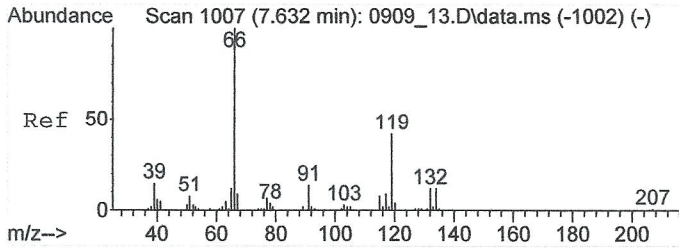
Tgt Ion: 105 Resp: 1232  
 Ion Ratio Lower Upper  
 105 100  
 120 30.1 20.4 30.6



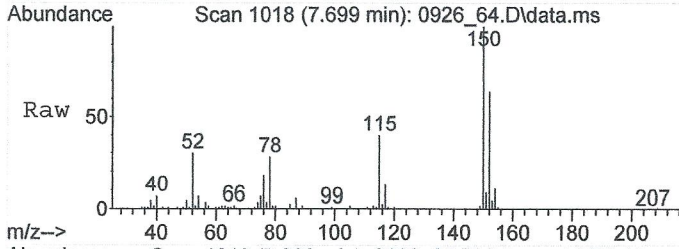
#92  
 1,2,4-TRIMETHYLBENZENE  
 Concen: 0.2257102 ppb  
 RT: 7.535 min Scan# 991  
 Delta R.T. 0.000 min  
 Lab File: 0926\_64.D  
 Acq: 27 Sep 2020 6:49 am

Tgt Ion: 105 Resp: 1658  
 Ion Ratio Lower Upper  
 105 100  
 120 35.2 40.9 61.3#

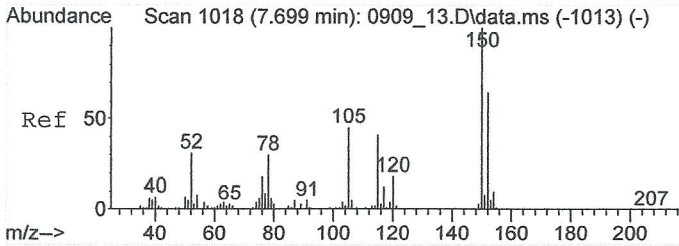
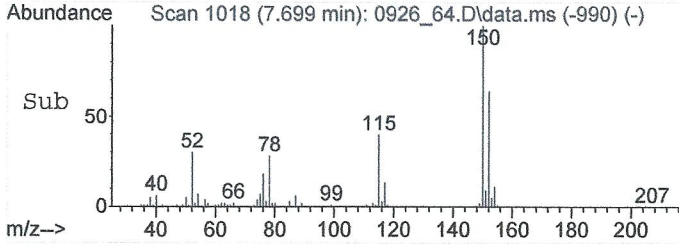
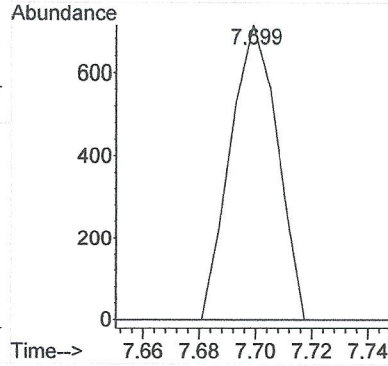




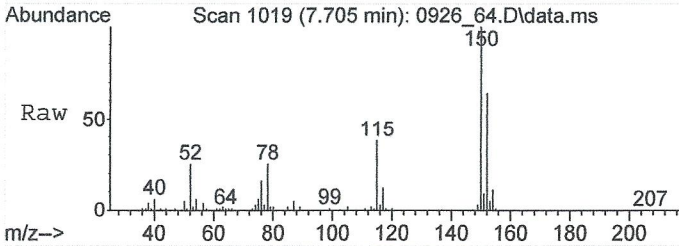
#96  
 DICYCLOPENTADIENE  
 Concen: 0.0894122 ppb  
 RT: 7.699 min Scan# 1018  
 Delta R.T. 0.067 min  
 Lab File: 0926\_64.D  
 Acq: 27 Sep 2020 6:49 am



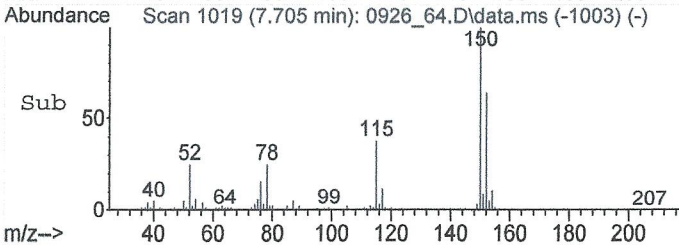
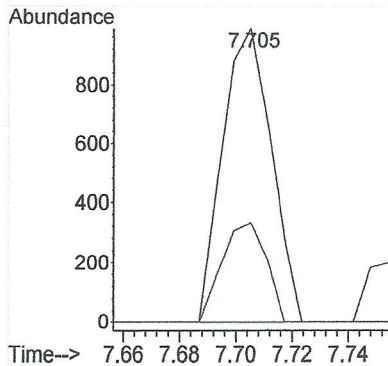
Tgt Ion: 66 Resp: 835  
 Ion Ratio Lower Upper  
 66 100  
 132 0.0 9.3 13.9#

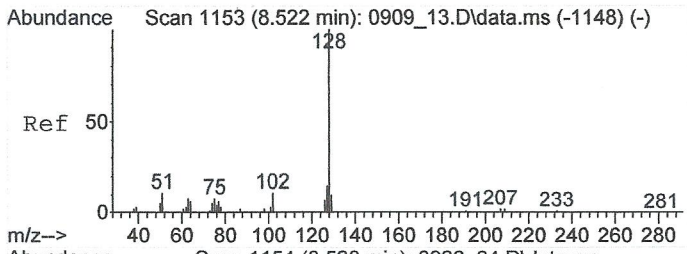


#98  
 1,2,3-TRIMETHYLBENZENE  
 Concen: 0.2020447 ppb  
 RT: 7.705 min Scan# 1019  
 Delta R.T. 0.006 min  
 Lab File: 0926\_64.D  
 Acq: 27 Sep 2020 6:49 am



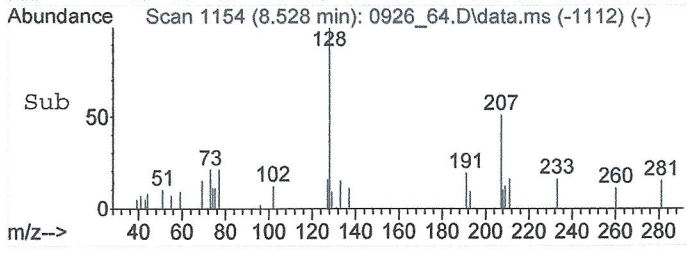
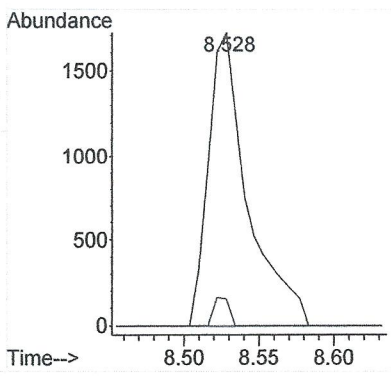
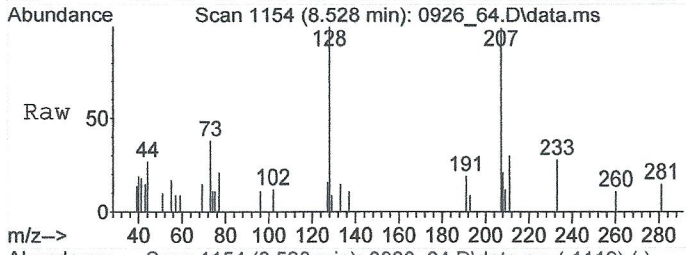
Tgt Ion: 105 Resp: 1190  
 Ion Ratio Lower Upper  
 105 100  
 120 30.6 32.9 49.3#





#105  
 NAPHTHALENE  
 Concen: 0.8976691 ppb  
 RT: 8.528 min Scan# 1154  
 Delta R.T. 0.006 min  
 Lab File: 0926\_64.D  
 Acq: 27 Sep 2020 6:49 am

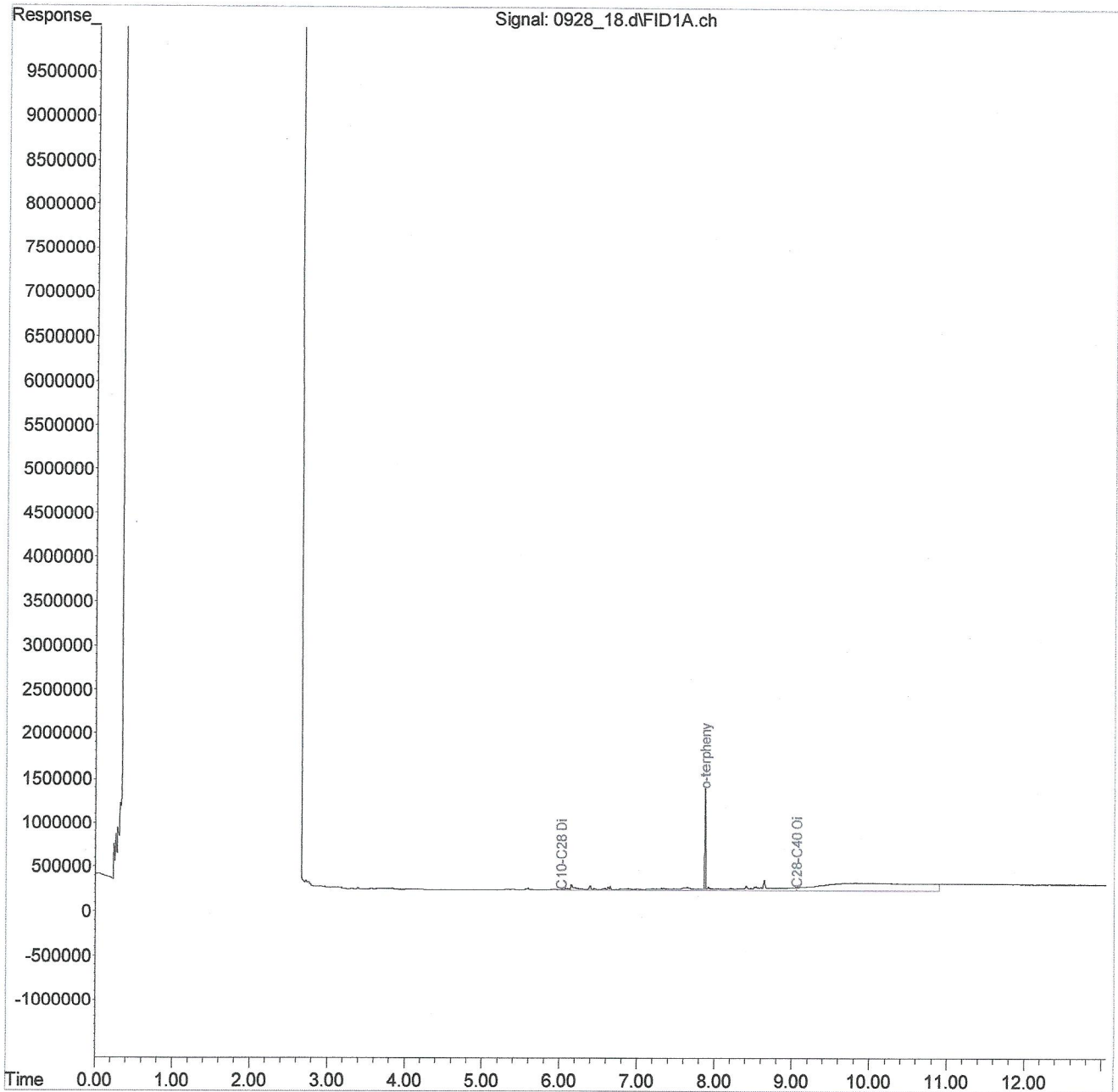
Tgt Ion	Resp	Lower	Upper
128	100		
129	0.0	7.0	10.6#



Data Path : C:\msdchem\1\data\092820\  
 Data File : 0928 18.d  
 Signal(s) : FID1A.ch  
 Acq On : 28 Sep 2020 6:40 pm  
 Operator : 995  
 Sample : L1265781-02 1X WG1550341  
 Misc : M.I.s on ranges are corrections  
 ALS Vial : 18 Sample Multiplier: 1  
 InstName : SVGC31

Integration File: events.e  
 Quant Time: Sep 29 10:27:28 2020  
 Quant Method : C:\msdchem\1\methods\DM31I24T.M  
 Quant Title :  
 QLast Update : Fri Sep 25 10:26:59 2020  
 Response via : Initial Calibration  
 Integrator: ChemStation

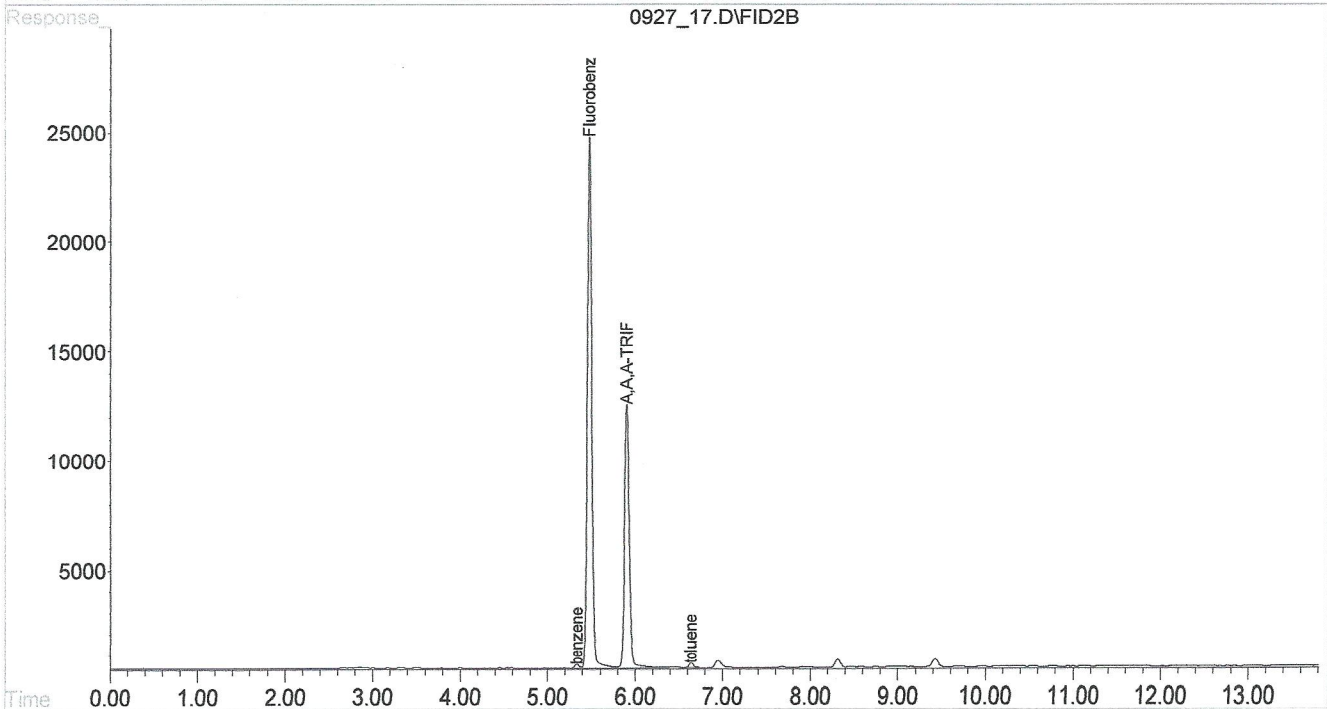
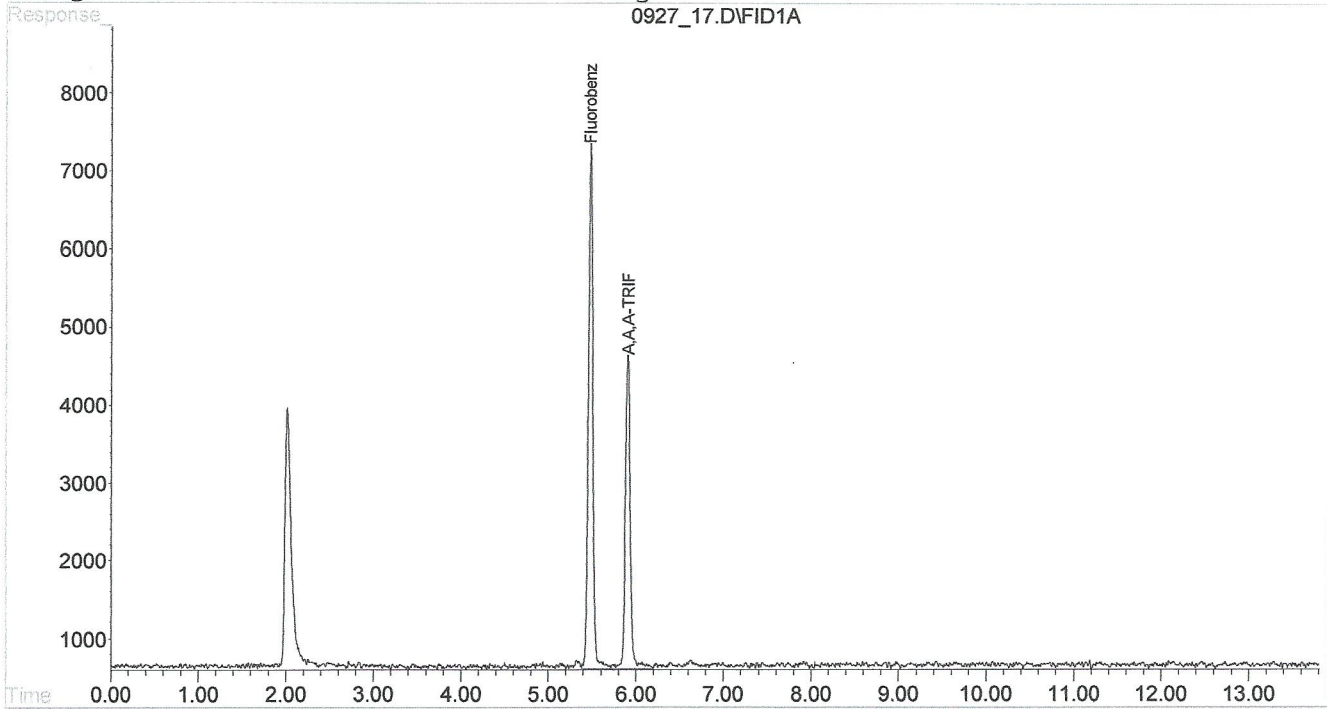
Volume Inj. :  
 Signal Phase :  
 Signal Info :



Signal #1 : C:\HPCHEM\1\DATA\092720\0927 17.D\FID1A.CH Vial: 17  
 Signal #2 : C:\HPCHEM\1\DATA\092720\0927 17.D\FID2B.CH  
 Acq On : 27 Sep 2020 11:44 pm Operator: 808  
 Sample : L1265781-02 1x WG1549997 Inst : VOCGC5  
 Misc : soil Multiplr: 1.00  
 IntFile Signal #1: BTEX.E IntFile Signal #2: EVENTS3.E  
 Quant Time: Sep 29 8:06 2020 Quant Results File: BG05H04T.RES

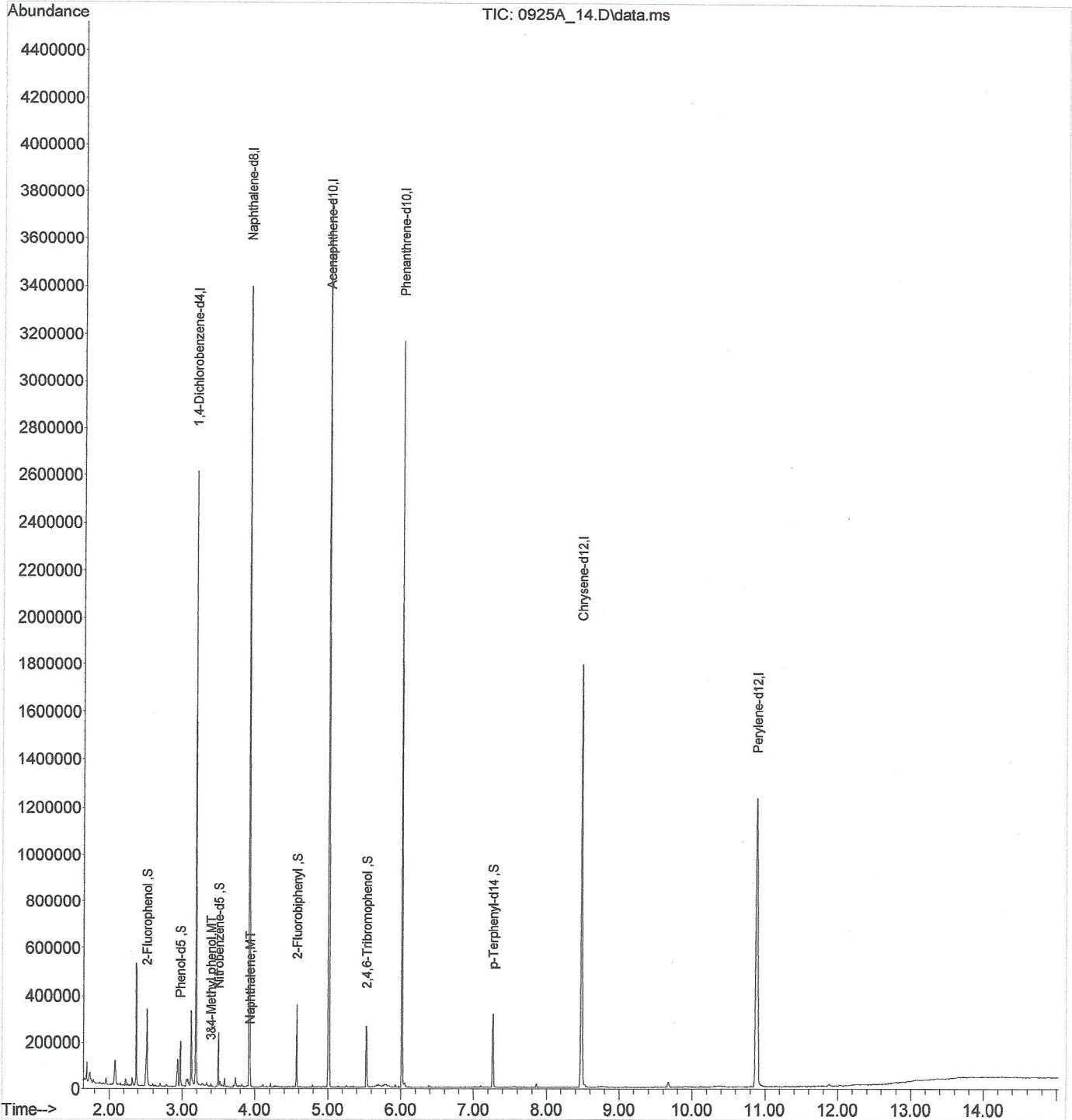
Quant Method : C:\HPCHEM\1\METHODS\BG05H04T.M (Chemstation Integrator)  
 Title : Volatile Organics by GC/FID/PID  
 Last Update : Wed Aug 05 08:55:04 2020  
 Response via : Single Level Calibration  
 DataAcq Meth : VGC5-4.M

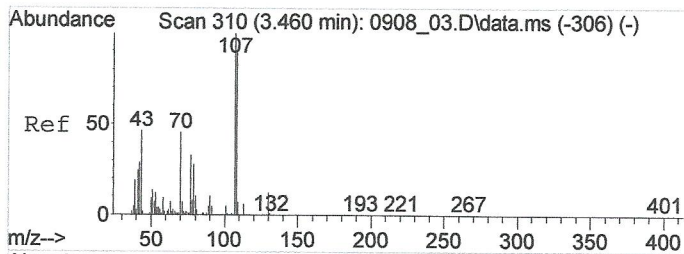
Volume Inj. :  
 Signal #1 Phase : Signal #2 Phase:  
 Signal #1 Info : Signal #2 Info :



Data Path : C:\msdchem\1\data\092520A\  
 Data File : 0925A 14.D  
 Acq On : 25 Sep 2020 4:22 pm  
 Operator : 773  
 Sample : L1265781-02 1X WG1548769  
 Misc : WATER ISTD 20I18097 exp 3/18/21  
 ALS Vial : 69 Sample Multiplier: 1  
 InstName : BNAMS20

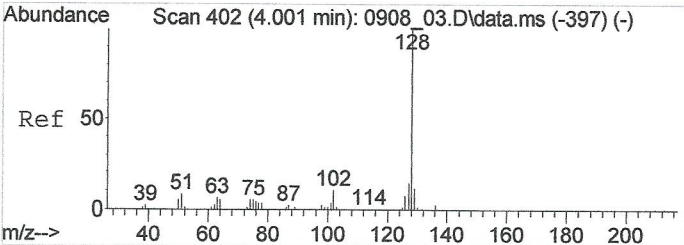
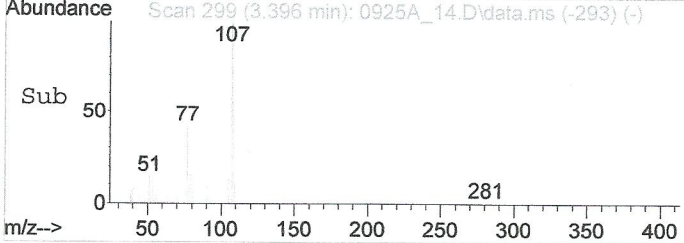
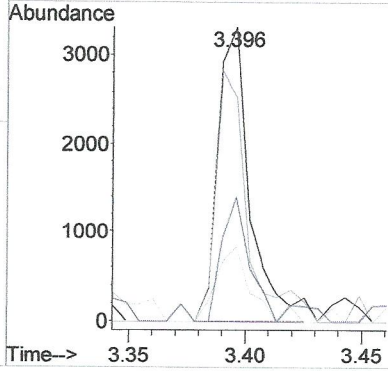
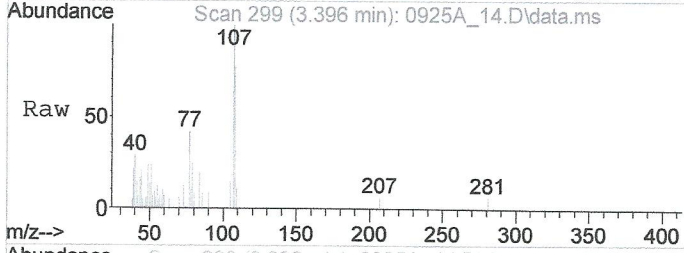
Quant Time: Sep 28 15:35:14 2020  
 Quant Method : C:\msdchem\1\methods\S820I08T.M  
 Quant Title : 8270 BNA  
 QLast Update : Tue Sep 08 15:53:31 2020  
 Response via : Initial Calibration  
 DataAcq Meth: BNA20SP.M





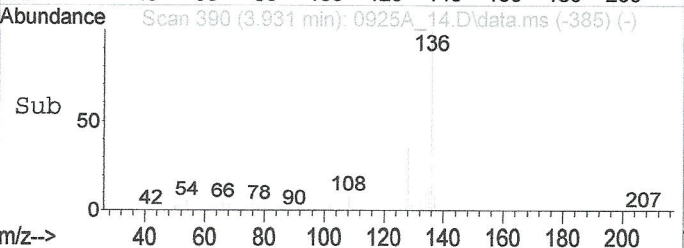
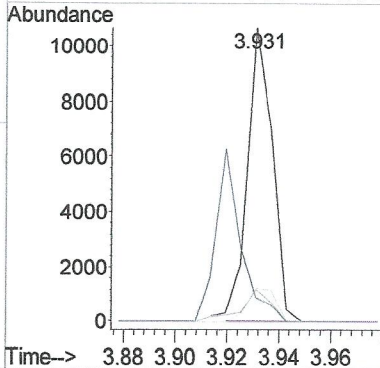
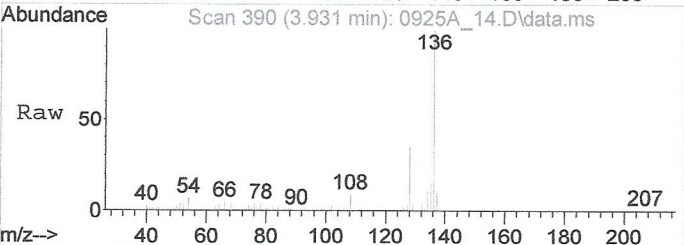
#21  
 3&4-Methyl phenol  
 Concen: 67.2687570 ppb  
 RT: 3.396 min Scan# 299  
 Delta R.T. -0.065 min  
 Lab File: 0925A\_14.D  
 Acq: 25 Sep 2020 4:22 pm

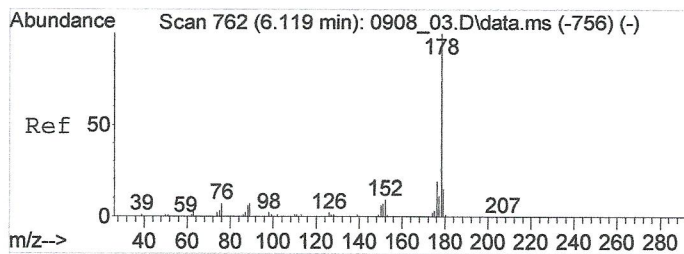
Tgt Ion	Resp	Lower	Upper
107	3198	100	
108	76.9	69.2	109.2
79	25.0	6.4	46.4
77	37.8	10.9	50.9



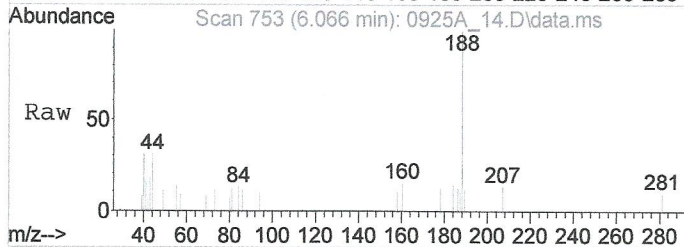
#34  
 Naphthalene  
 Concen: 51.3303974 ppb  
 RT: 3.931 min Scan# 390  
 Delta R.T. -0.071 min  
 Lab File: 0925A\_14.D  
 Acq: 25 Sep 2020 4:22 pm

Tgt Ion	Resp	Lower	Upper
128	7266	100	
129	11.7	0.0	31.0
127	12.0	0.0	33.4
102	8.7	0.0	28.8





#78  
 Phenanthrene  
 Concen: Below Cal  
 RT: 6.066 min Scan# 753  
 Delta R.T. -0.053 min  
 Lab File: 0925A\_14.D  
 Acq: 25 Sep 2020 4:22 pm



Tgt Ion	Ratio	Lower	Upper
178	100		
179	0.0	0.0	35.3
152	0.0	0.0	29.2
89	0.0	0.0	27.5

