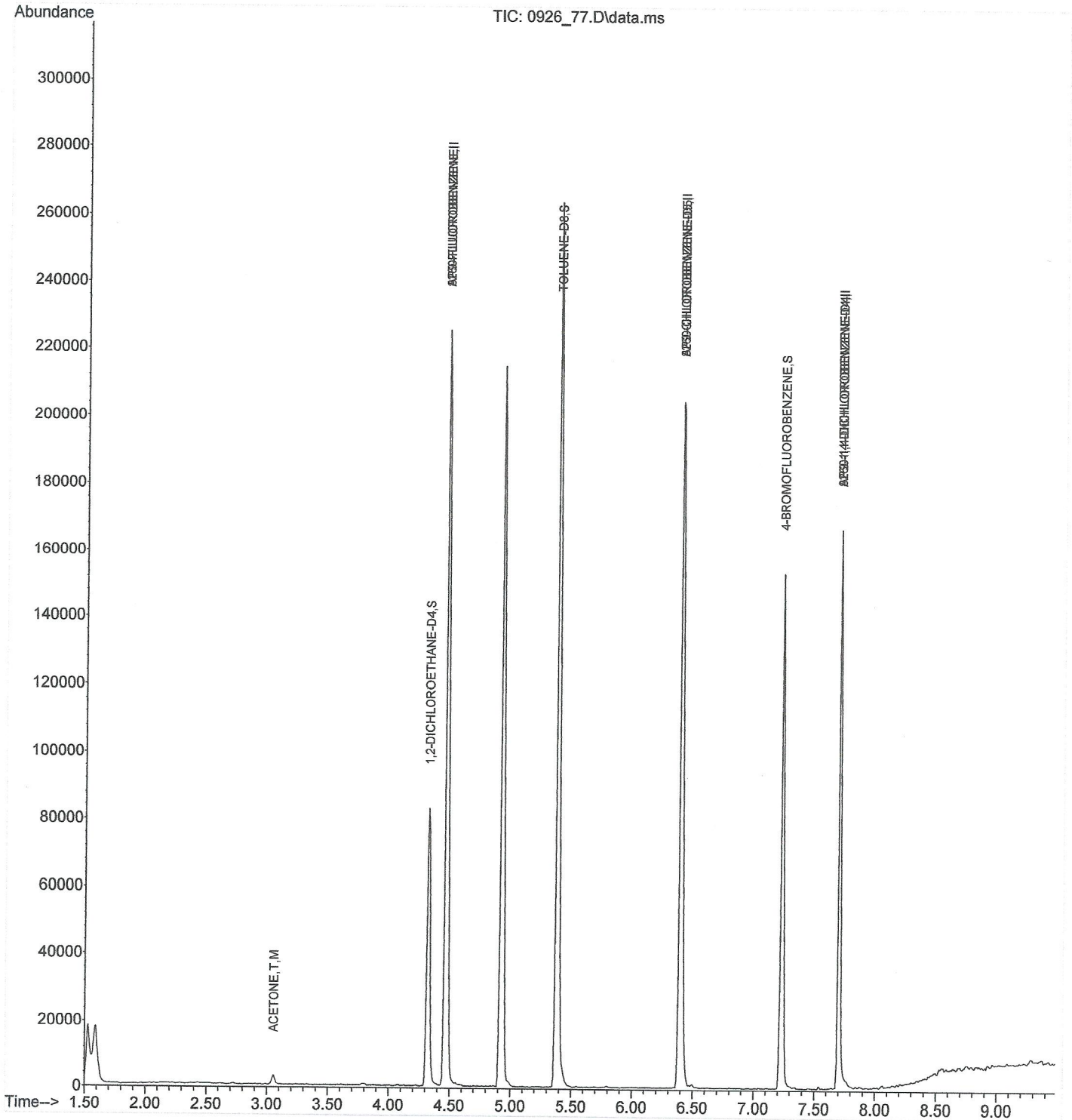
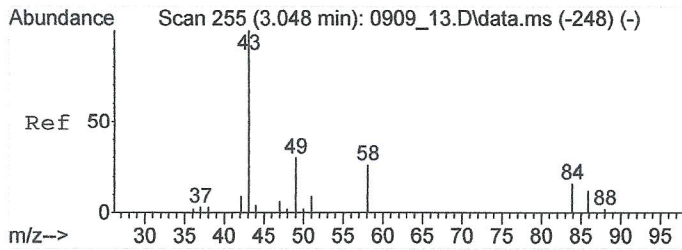


Data Path : C:\msdchem\1\data\092620\
Data File : 0926 77.D
Acq On : 27 Sep 2020 12:00 pm
Operator : 3527
Sample : L1265781-01 1000x WG1549996
Misc : water
ALS Vial : 69 Sample Multiplier: 1
InstName : VOCMS20

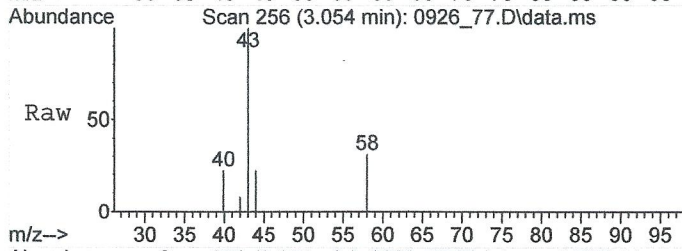
AC 35-06

Quant Time: Sep 28 08:34:41 2020
Quant Method : C:\msdchem\1\methods\V820I09T.M
Quant Title : Volatile Organics by GC/MS
QLast Update : Thu Sep 10 08:56:06 2020
Response via : Initial Calibration

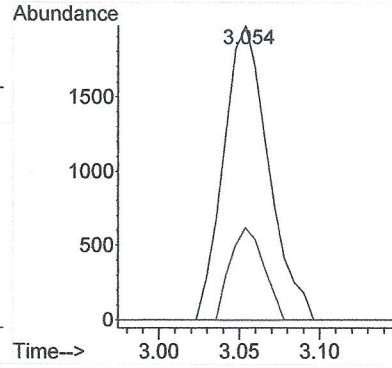
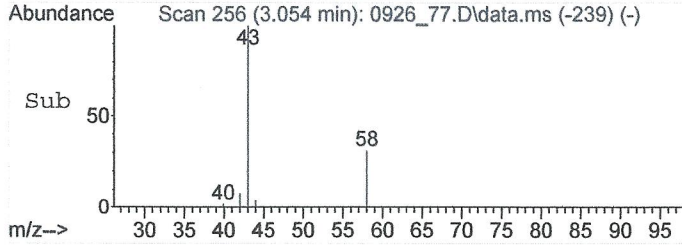




#19
 ACETONE
 Concen: 3.6581925 ppb
 RT: 3.054 min Scan# 256
 Delta R.T. 0.007 min
 Lab File: 0926_77.D
 Acq: 27 Sep 2020 12:00 pm

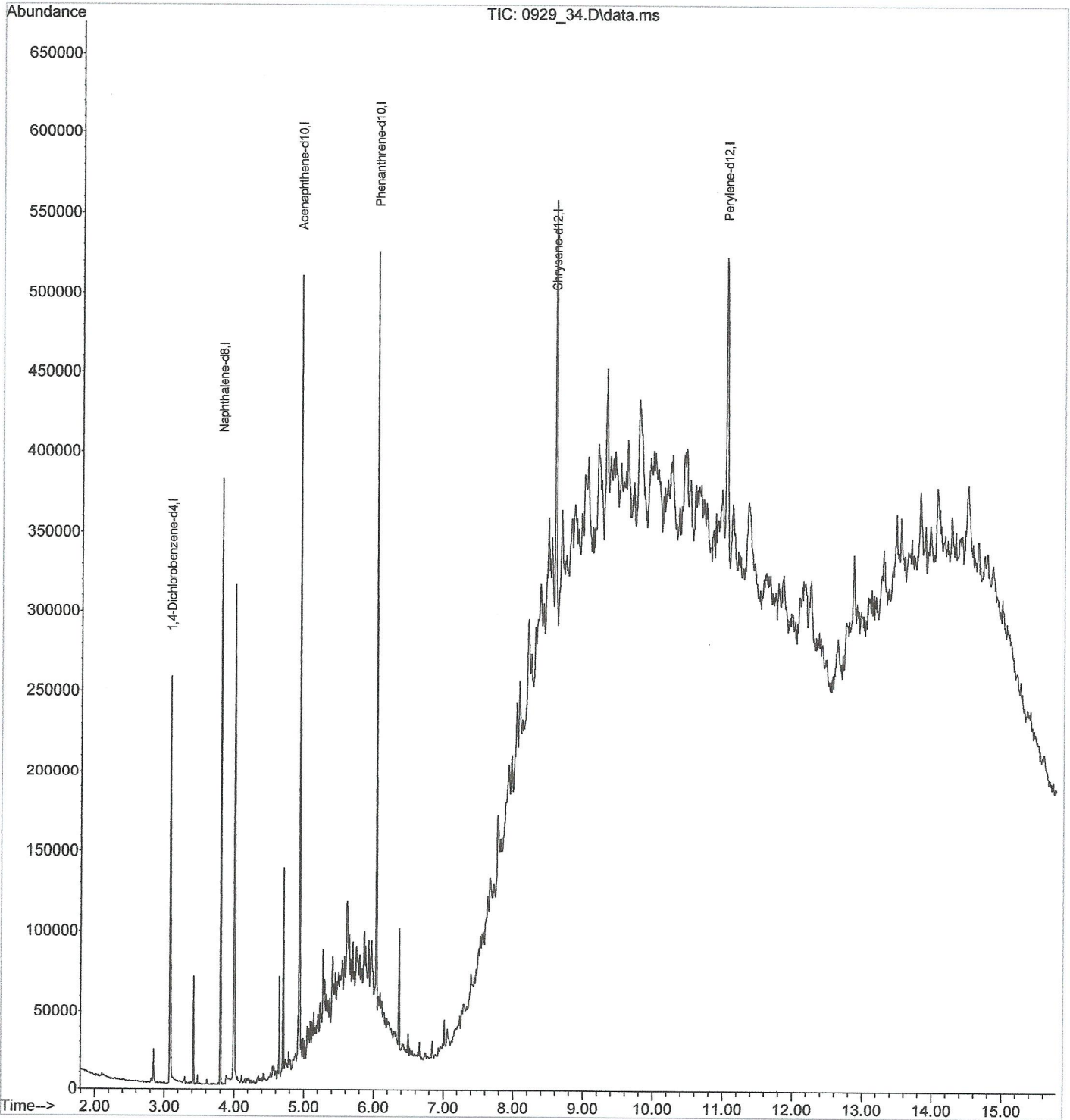


Tgt Ion: 43 Resp: 3826
 Ion Ratio Lower Upper
 43 100
 58 23.5 22.2 33.2



Data Path : C:\msdchem\1\data\092920\
Data File : 0929 34.D
Acq On : 29 Sep 2020 6:17 pm
Operator : 574
Sample : L1265781-04 20X WG1550698
Misc : SOIL ISTD 20I23542 exp 3/23/21
ALS Vial : 33 Sample Multiplier: 1

Quant Time: Sep 30 09:16:29 2020
Quant Method : C:\msdchem\1\methods\S823I23T.M
Quant Title : 8270 BNA
QLast Update : Wed Sep 23 14:13:06 2020
Response via : Initial Calibration
DataAcq Meth: BNA23PS.M

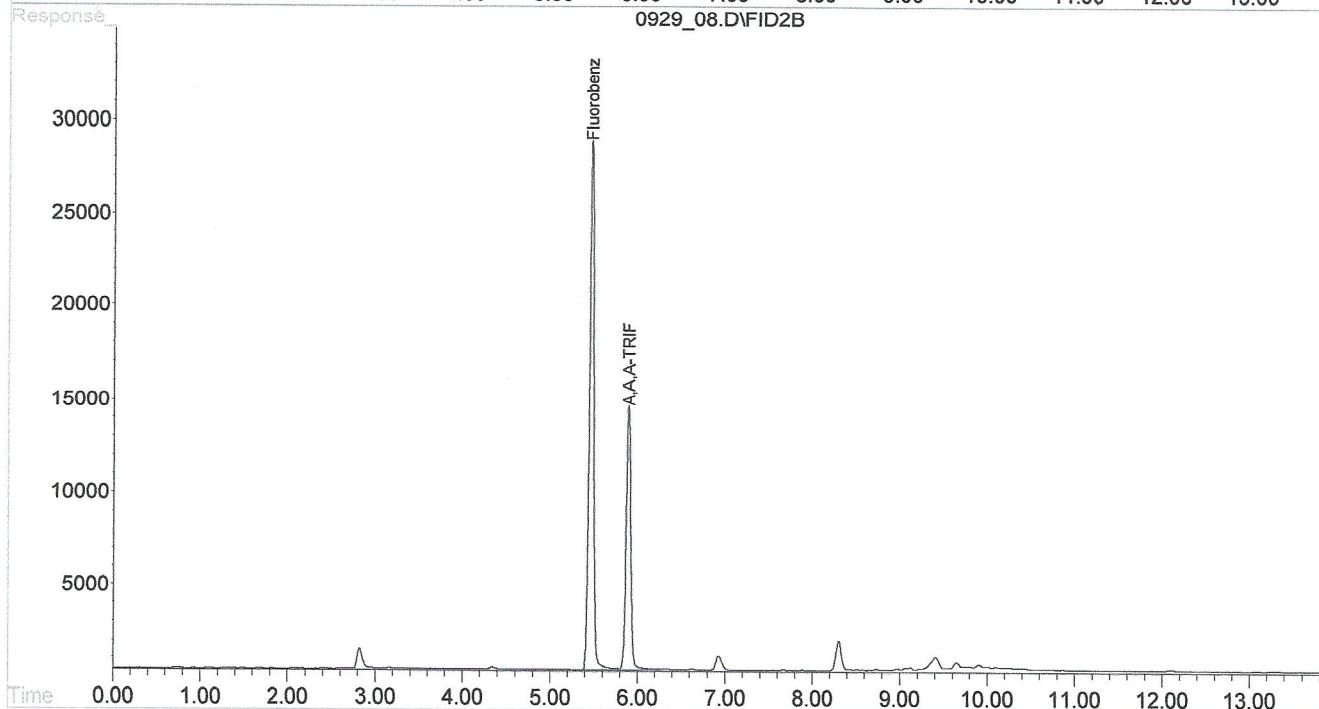
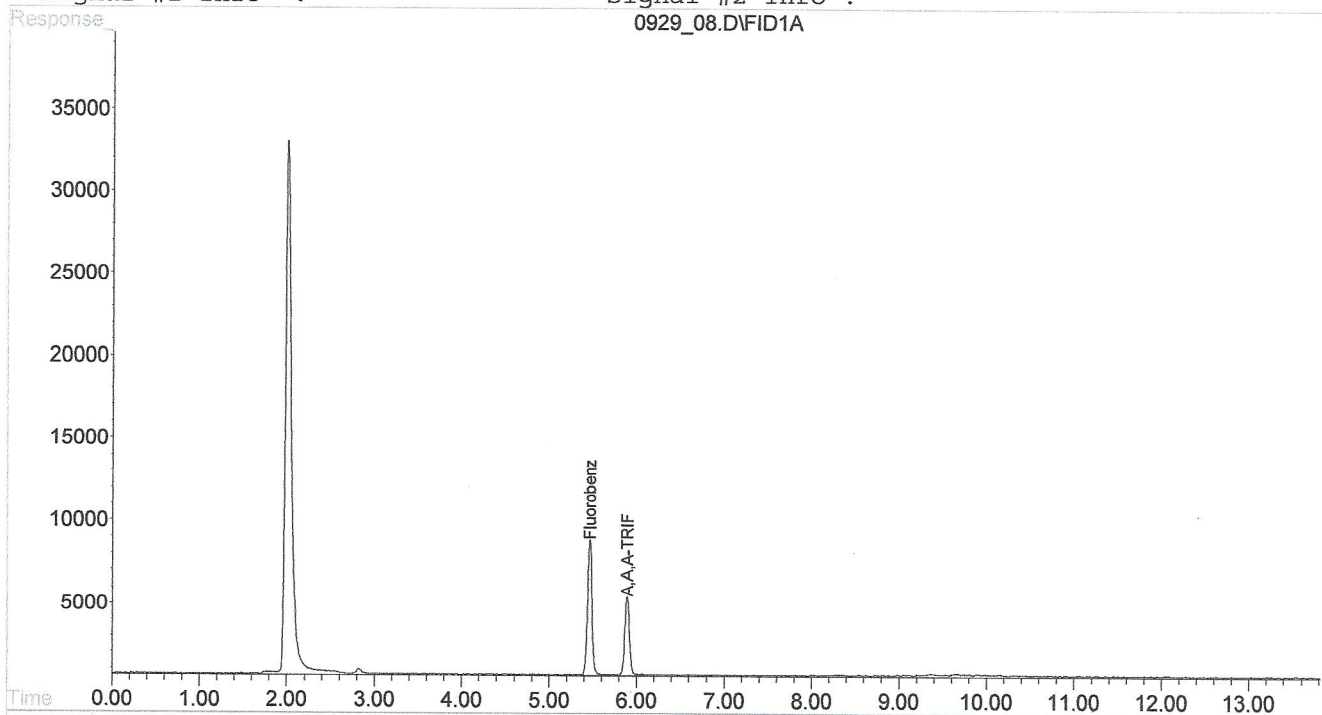


Signal #1 : C:\HPCHEM\1\DATA\092920\0929 08.D\FID1A.CH Vial: 10
Signal #2 : C:\HPCHEM\1\DATA\092920\0929 08.D\FID2B.CH
Acq On : 29 Sep 2020 2:08 pm Operator: 826
Sample : L1265781-01 20x WG1550915 Inst : VOCGC5
Misc : soil Multiplr: 1.00
IntFile Signal #1: BTEX.E IntFile Signal #2: EVENTS3.E
Quant Time: Sep 29 14:42 2020 Quant Results File: BG05H04T.RES

Quant Method : C:\HPCHEM\1\METHODS\BG05H04T.M (Chemstation Integrator)
Title : Volatile Organics by GC/FID/PID
Last Update : Wed Aug 05 08:55:04 2020
Response via : Single Level Calibration
DataAcq Meth : VGC5-4.M

AC 35-06

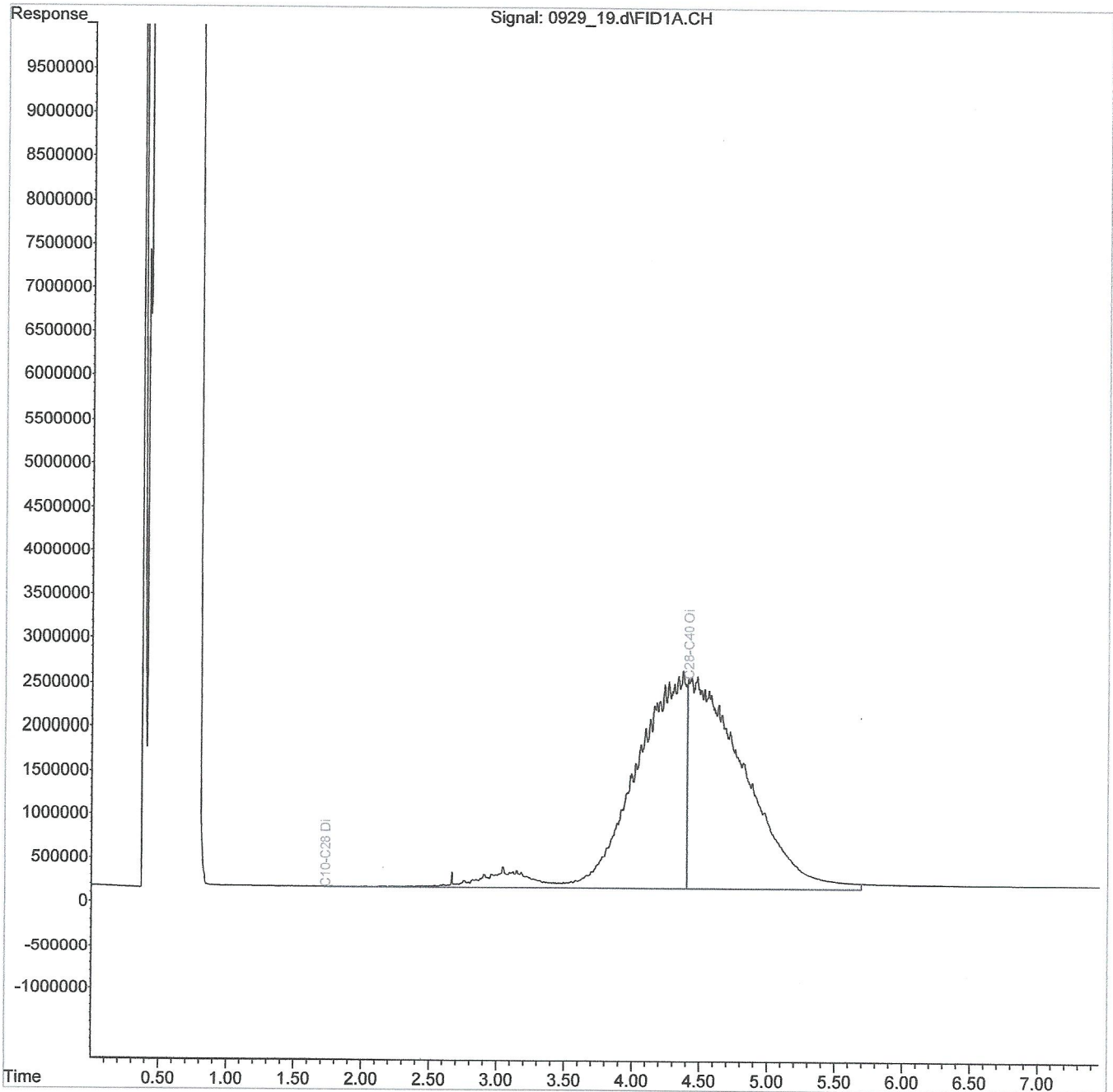
Volume Inj. :
Signal #1 Phase : Signal #2 Phase:
Signal #1 Info : Signal #2 Info :



Data Path : C:\msdchem\1\data\092920\
Data File : 0929 19.d
Signal(s) : FID1A.CH
Acq On : 29 Sep 2020 10:45 am
Operator : 846
Sample : L1265781-04 40x WG1550286
Misc : M.I.'s on ranges are corrections
ALS Vial : 13 Sample Multiplier: 1

Integration File: events.e
Quant Time: Sep 29 11:45:07 2020
Quant Method : C:\msdchem\1\methods\DM16I28T.M
Quant Title :
QLast Update : Mon Sep 28 10:57:53 2020
Response via : Initial Calibration
Integrator: ChemStation 6890 Scale Mode: Large solvent peaks clipped

Volume Inj. :
Signal Phase :
Signal Info :



Data Path : C:\msdchem\1\data\092920\
Data File : 0929_13.d
Signal(s) : FID1A.CH
Acq On : 29 Sep 2020 9:23 am
Operator : 846
Sample : L1265781-04 20x WG1550286
Misc : M.I.'s on ranges are corrections
ALS Vial : 11 Sample Multiplier: 1

Integration File: events.e
Quant Time: Sep 29 10:32:40 2020
Quant Method : C:\msdchem\1\methods\DM16I28T.M
Quant Title :
QLast Update : Mon Sep 28 10:57:53 2020
Response via : Initial Calibration
Integrator: ChemStation 6890 Scale Mode: Large solvent peaks clipped

Volume Inj. :
Signal Phase :
Signal Info :

