



Mr. Phillip Porter
PDC Energy Inc.
4000 Burlington Avenue
Evans, Colorado 80620

September 17, 2020

RE: Vegetation Assessment Report (Final Reclamation Completion Notice)
COGCC Location Information: NADINE-65N65W /24NWNW (Location I.D. 323171)
Operator Location Information: Nadine 1-24 Well & Facility (API# 05-123-12658)
PDC Energy Inc. (Operator: 69175)

Dear Mr. Porter:

Apex Companies, LLC (Apex) is presenting this letter to PDC Energy Inc. (PDC) documenting the results of a location assessment that demonstrates successful completion of final reclamation efforts, per Colorado Oil & Gas Conservation Commission (COGCC) Rule 1004, on the above-referenced locations. Attached is a topographic location map and an assessment site map with additional location information.

Site visits, project correspondence and documentation, and the completed site assessment confirmed that the location has been final reclaimed, with no evidence of unrestored subsidence over two years. Based on the results of the survey, final reclamation, as defined by COGCC Rules and regulations, has been achieved. Photographs exhibiting current site conditions are attached, along with the site map that illustrates the photo points.

On June 16, 2020 the location was visited and photographs documenting current site conditions were taken. These photographs show that all activities disturbing the ground have been completed, and all disturbed areas associated with the well have been compacted, covered, graveled, and stabilized in such a way as to minimize erosion. The landowner's designated final land use has changed from crop cultivation to an industrial laydown yard. The well disturbance area is within permanently stabilized surface of the laydown yard and has been returned to the landowner for their industrial activities. The associated facility has been seeded and is stabilized with perennial grasses.

Sincerely,

Apex Companies, LLC

A handwritten signature in cursive script, appearing to read 'Carolyn Craveiro de Sá'.

Carolyn Craveiro de Sá
Environmental Scientist
720-537-5478

Carolyn.CraveirodeSa@apexcos.com

Attachments:

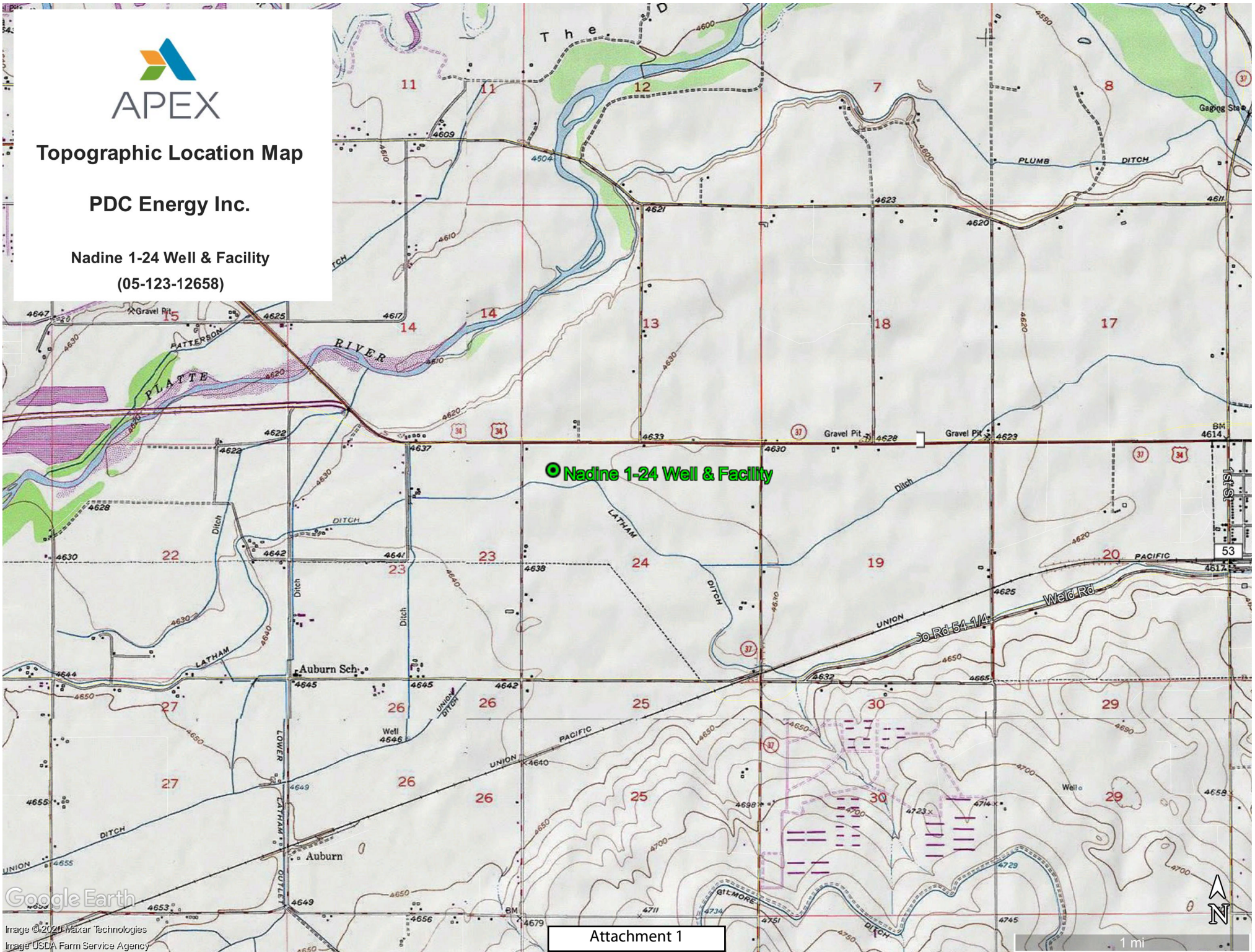
1. Topographic Location Map
2. Assessment Site Map
3. Assessment Photo Log



Topographic Location Map

PDC Energy Inc.

Nadine 1-24 Well & Facility
(05-123-12658)







Assessment Site Map

PDC Energy Inc.

Nadine 1-24 Well & Facility
(05-123-12658)

	Vegetation Photo Point
	Directional Photos

Legal Description: NWNW, Sec. 24, T5N-R65W
Lat/Long: 40.390169/-104.618608
County: Weld
Land Use: Industrial
Inspector: Carolyn Craveiro de Sa
Assessment Date: 06/16/2020
Aerial Imagery Date: 04/12/2006

**Please reference coordinate disclaimer on the photo log pages.*



Assessment Photo Log

Date Completed - 06/16/2020

Client - PDC Energy Inc.

Operator Location Information (API) - Nadine 1-24 Well & Facility (05-123-12658)



Photo Point A: North of Disturbance - Facing South



Photo Point B: South of Disturbance - Facing North



Photo Point C: West of Disturbance - Facing East



Photo Point D: East of Disturbance - Facing West

*Geographic coordinates provided in the borders of all attached photos are based on points identified by the mobile phone or tablet which collected the photo. Coordinate accuracy in this format is typically no greater than 5 meters, while the points illustrated in the site diagram associated with this submittal were collected with a high accuracy GPS unit with sub-meter accuracy. Discrepancies between the site diagram and photo coordinates will exist.

Assessment Photo Log

Date Completed - 06/16/2020

Client - **PDC Energy Inc.**

Operator Location Information (API) - **Nadine 1-24 Well & Facility (05-123-12658)**



Photo Point E: Reference Area - Facing North

Assessment Photo Log

Date Completed - 06/16/2020

Client - **PDC Energy Inc.**

Operator Location Information (API) - **Nadine 1-24 Well & Facility (05-123-12658)**



Photo Point F: Facility Overview - Facing East Northeast