



Pad Name: Groves Farm 34-L Pad
Well Name: GROVES FARM W-34-33HN
Ground Level: 4844.0
SHL Latitude: 40° 31' 47.651 N
SHL Longitude: 104° 38' 34.580 W

SECTION DETAILS

Sec	MD	Inc	Azi	TVD	+N/-S	+E/-W	Dleg	TFace	VSect	Target
1	0.0	0.00	0.00	0.0	0.0	0.0	0.00	0.00	0.0	
2	1500.0	0.00	0.00	1500.0	0.0	0.0	0.00	0.00	0.0	
3	3998.7	50.47	155.96	3687.8	-941.7	420.1	2.02	155.96	-218.0	
4	4499.0	50.47	155.96	4006.2	-1294.2	577.4	0.00	0.00	-299.6	
5	6997.7	0.00	271.69	6194.0	-2235.9	997.5	2.02	180.00	-517.5	
6	7197.7	0.00	271.69	6394.0	-2235.9	997.5	0.00	0.00	-517.5	
7	8098.3	90.06	271.69	6967.0	-2219.0	424.2	10.00	0.00	40.1	GF W-34-33HN LP
8	8098.3	90.06	271.69	6967.0	-2219.0	424.2	2.00	0.00	40.1	
9	12917.8	90.06	271.69	6962.0	-2076.9	-4393.2	0.00	0.00	4725.9	
10	12918.4	90.06	271.70	6962.0	-2076.9	-4393.8	2.00	90.65	4726.5	GF W-34-33HN VP
11	17749.3	90.06	271.70	6957.0	-1933.5	-9222.6	0.00	0.00	9423.1	GF W-34-33HN PBHL

DESIGN TARGET DETAILS

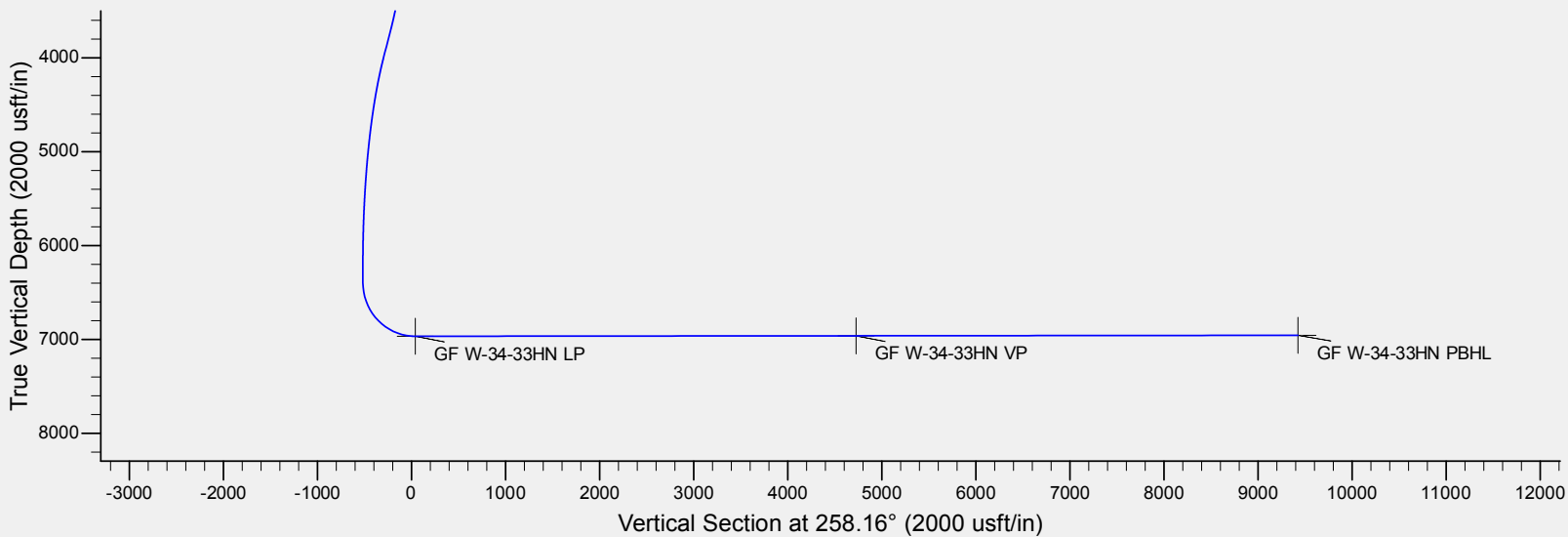
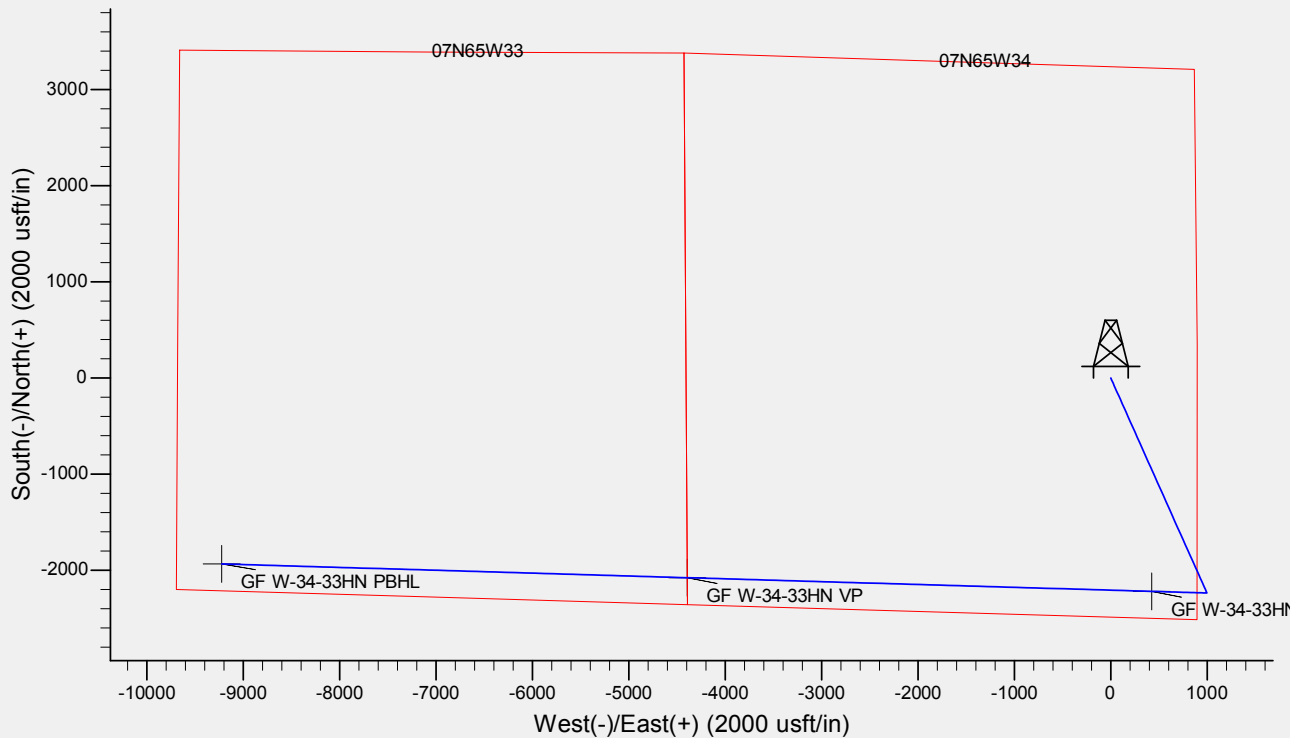
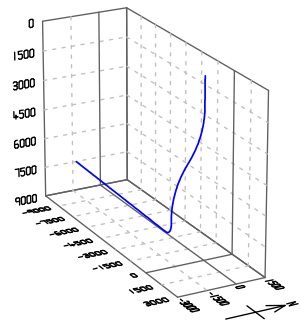
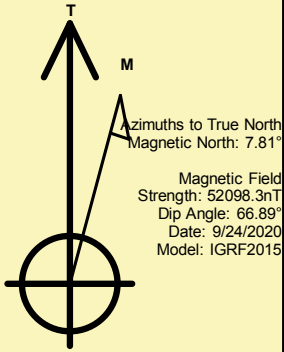
Name	TVD	+N/-S	+E/-W	Northing	Easting	Latitude	Longitude	Shape
GF W-34-33HN LP	6967.0	-2219.0	424.2	1434820.90	3238684.92	40° 31' 25.723 N	104° 38' 29.087 W	Point
GF W-34-33HN VP	- plan hits target center 6962.0	-2076.9	-4393.8	1434916.43	3233865.75	40° 31' 27.124 N	104° 39' 31.478 W	Point
GF W-34-33HN PBHL	- plan hits target center 6957.0	-1933.5	-9222.6	1435013.16	3229035.78	40° 31' 28.528 N	104° 40' 34.010 W	Point

REFERENCE INFORMATION

Co-ordinate (N/E) Reference: Well GROVES FARM W-34-33HN, True North
Vertical (TVD) Reference: KB @ 4867.0usft (Original Well Elev)
Section (VS) Reference: Slot - (0.0N, 0.0E)
Measured Depth Reference: KB @ 4867.0usft (Original Well Elev)
Calculation Method: Minimum Curvature

CASING DETAILS

No casing data is available





BAYSWATER

Bayswater Exploration & Production, LLC

DJ Basin

Groves Farm 34-L Pad

GROVES FARM W-34-33HN

Wellbore #1

Plan: Design #1

Standard Planning Report

26 September, 2020



Database:	EDM	Local Co-ordinate Reference:	Well GROVES FARM W-34-33HN
Company:	Bayswater Exploration & Production, LLC	TVD Reference:	KB @ 4867.0usft (Original Well Elev)
Project:	DJ Basin	MD Reference:	KB @ 4867.0usft (Original Well Elev)
Site:	Groves Farm 34-L Pad	North Reference:	True
Well:	GROVES FARM W-34-33HN	Survey Calculation Method:	Minimum Curvature
Wellbore:	Wellbore #1		
Design:	Design #1		

Project	DJ Basin, DJ Basin		
Map System:	US State Plane 1983	System Datum:	Mean Sea Level
Geo Datum:	North American Datum 1983		
Map Zone:	Colorado Northern Zone		

Site	Groves Farm 34-L Pad				
Site Position:		Northing:	1,437,185.82 usft	Latitude:	40° 31' 49.134 N
From:	Lat/Long	Easting:	3,238,241.98 usft	Longitude:	104° 38' 34.526 W
Position Uncertainty:	0.0 usft	Slot Radius:	13-3/16 "	Grid Convergence:	0.55 °

Well	GROVES FARM W-34-33HN					
Well Position	+N/-S	-150.1 usft	Northing:	1,437,035.68 usft	Latitude:	40° 31' 47.651 N
	+E/-W	-4.2 usft	Easting:	3,238,239.26 usft	Longitude:	104° 38' 34.580 W
Position Uncertainty		0.0 usft	Wellhead Elevation:		Ground Level:	4,844.0 usft

Wellbore	Wellbore #1				
Magnetics	Model Name	Sample Date	Declination (°)	Dip Angle (°)	Field Strength (nT)
	IGRF2015	9/24/2020	7.81	66.89	52,098.28877345

Design	Design #1				
Audit Notes:					
Version:		Phase:	PLAN	Tie On Depth:	0.0
Vertical Section:	Depth From (TVD) (usft)	+N/-S (usft)	+E/-W (usft)	Direction (°)	
	0.0	0.0	0.0	258.16	

Plan Survey Tool Program	Date	9/24/2020			
Depth From (usft)	Depth To (usft)	Survey (Wellbore)	Tool Name	Remarks	
1	0.0	17,749.3	Design #1 (Wellbore #1)	MWD	
				OWSG MWD - Standard	



Database:	EDM	Local Co-ordinate Reference:	Well GROVES FARM W-34-33HN
Company:	Bayswater Exploration & Production, LLC	TVD Reference:	KB @ 4867.0usft (Original Well Elev)
Project:	DJ Basin	MD Reference:	KB @ 4867.0usft (Original Well Elev)
Site:	Groves Farm 34-L Pad	North Reference:	True
Well:	GROVES FARM W-34-33HN	Survey Calculation Method:	Minimum Curvature
Wellbore:	Wellbore #1		
Design:	Design #1		

Plan Sections										
Measured Depth (usft)	Inclination (°)	Azimuth (°)	Vertical Depth (usft)	+N/-S (usft)	+E/-W (usft)	Dogleg Rate (°/100usft)	Build Rate (°/100usft)	Turn Rate (°/100usft)	TFO (°)	Target
0.0	0.00	0.00	0.0	0.0	0.0	0.00	0.00	0.00	0.00	
1,500.0	0.00	0.00	1,500.0	0.0	0.0	0.00	0.00	0.00	0.00	
3,998.7	50.47	155.96	3,687.8	-941.7	420.1	2.02	2.02	0.00	155.96	
4,499.0	50.47	155.96	4,006.2	-1,294.2	577.4	0.00	0.00	0.00	0.00	
6,997.7	0.00	271.69	6,194.0	-2,235.9	997.5	2.02	-2.02	0.00	180.00	
7,197.7	0.00	271.69	6,394.0	-2,235.9	997.5	0.00	0.00	0.00	0.00	
8,098.3	90.06	271.69	6,967.0	-2,219.0	424.2	10.00	10.00	0.00	0.00	GF W-34-33HN LP
8,098.3	90.06	271.69	6,967.0	-2,219.0	424.2	2.00	0.00	0.00	0.00	
12,917.8	90.06	271.69	6,962.0	-2,076.9	-4,393.2	0.00	0.00	0.00	0.00	
12,918.4	90.06	271.70	6,962.0	-2,076.9	-4,393.8	2.00	-0.02	2.00	90.65	GF W-34-33HN VP
17,749.3	90.06	271.70	6,957.0	-1,933.5	-9,222.6	0.00	0.00	0.00	0.00	GF W-34-33HN PBHL



Database:	EDM	Local Co-ordinate Reference:	Well GROVES FARM W-34-33HN
Company:	Bayswater Exploration & Production, LLC	TVD Reference:	KB @ 4867.0usft (Original Well Elev)
Project:	DJ Basin	MD Reference:	KB @ 4867.0usft (Original Well Elev)
Site:	Groves Farm 34-L Pad	North Reference:	True
Well:	GROVES FARM W-34-33HN	Survey Calculation Method:	Minimum Curvature
Wellbore:	Wellbore #1		
Design:	Design #1		

Planned Survey									
Measured Depth (usft)	Inclination (°)	Azimuth (°)	Vertical Depth (usft)	+N/-S (usft)	+E/-W (usft)	Vertical Section (usft)	Dogleg Rate (°/100usft)	Build Rate (°/100usft)	Turn Rate (°/100usft)
0.0	0.00	0.00	0.0	0.0	0.0	0.0	0.00	0.00	0.00
100.0	0.00	0.00	100.0	0.0	0.0	0.0	0.00	0.00	0.00
200.0	0.00	0.00	200.0	0.0	0.0	0.0	0.00	0.00	0.00
300.0	0.00	0.00	300.0	0.0	0.0	0.0	0.00	0.00	0.00
400.0	0.00	0.00	400.0	0.0	0.0	0.0	0.00	0.00	0.00
500.0	0.00	0.00	500.0	0.0	0.0	0.0	0.00	0.00	0.00
600.0	0.00	0.00	600.0	0.0	0.0	0.0	0.00	0.00	0.00
700.0	0.00	0.00	700.0	0.0	0.0	0.0	0.00	0.00	0.00
800.0	0.00	0.00	800.0	0.0	0.0	0.0	0.00	0.00	0.00
900.0	0.00	0.00	900.0	0.0	0.0	0.0	0.00	0.00	0.00
1,000.0	0.00	0.00	1,000.0	0.0	0.0	0.0	0.00	0.00	0.00
1,100.0	0.00	0.00	1,100.0	0.0	0.0	0.0	0.00	0.00	0.00
1,200.0	0.00	0.00	1,200.0	0.0	0.0	0.0	0.00	0.00	0.00
1,300.0	0.00	0.00	1,300.0	0.0	0.0	0.0	0.00	0.00	0.00
1,400.0	0.00	0.00	1,400.0	0.0	0.0	0.0	0.00	0.00	0.00
1,500.0	0.00	0.00	1,500.0	0.0	0.0	0.0	0.00	0.00	0.00
1,600.0	2.02	155.96	1,600.0	-1.6	0.7	-0.4	2.02	2.02	0.00
1,700.0	4.04	155.96	1,699.8	-6.4	2.9	-1.5	2.02	2.02	0.00
1,800.0	6.06	155.96	1,799.4	-14.5	6.5	-3.4	2.02	2.02	0.00
1,900.0	8.08	155.96	1,898.7	-25.7	11.5	-6.0	2.02	2.02	0.00
2,000.0	10.10	155.96	1,997.4	-40.1	17.9	-9.3	2.02	2.02	0.00
2,100.0	12.12	155.96	2,095.5	-57.7	25.8	-13.4	2.02	2.02	0.00
2,200.0	14.14	155.96	2,192.9	-78.5	35.0	-18.2	2.02	2.02	0.00
2,300.0	16.16	155.96	2,289.4	-102.3	45.7	-23.7	2.02	2.02	0.00
2,400.0	18.18	155.96	2,385.0	-129.3	57.7	-29.9	2.02	2.02	0.00
2,500.0	20.20	155.96	2,479.4	-159.3	71.1	-36.9	2.02	2.02	0.00
2,600.0	22.22	155.96	2,572.6	-192.4	85.8	-44.5	2.02	2.02	0.00
2,700.0	24.24	155.96	2,664.5	-228.4	101.9	-52.9	2.02	2.02	0.00
2,800.0	26.26	155.96	2,755.0	-267.3	119.3	-61.9	2.02	2.02	0.00
2,900.0	28.28	155.96	2,843.8	-309.2	137.9	-71.6	2.02	2.02	0.00
3,000.0	30.30	155.96	2,931.1	-353.8	157.9	-81.9	2.02	2.02	0.00
3,100.0	32.32	155.96	3,016.5	-401.3	179.0	-92.9	2.02	2.02	0.00
3,200.0	34.34	155.96	3,100.0	-451.5	201.4	-104.5	2.02	2.02	0.00
3,300.0	36.36	155.96	3,181.6	-504.3	225.0	-116.7	2.02	2.02	0.00
3,400.0	38.38	155.96	3,261.1	-559.7	249.7	-129.6	2.02	2.02	0.00
3,500.0	40.40	155.96	3,338.3	-617.7	275.6	-143.0	2.02	2.02	0.00
3,600.0	42.42	155.96	3,413.3	-678.1	302.5	-157.0	2.02	2.02	0.00
3,700.0	44.44	155.96	3,486.0	-740.9	330.5	-171.5	2.02	2.02	0.00
3,800.0	46.46	155.96	3,556.1	-806.0	359.6	-186.6	2.02	2.02	0.00
3,900.0	48.48	155.96	3,623.7	-873.2	389.6	-202.1	2.02	2.02	0.00
3,998.7	50.47	155.96	3,687.8	-941.7	420.1	-218.0	2.02	2.02	0.00
4,000.0	50.47	155.96	3,688.7	-942.7	420.6	-218.2	0.00	0.00	0.00
4,100.0	50.47	155.96	3,752.3	-1,013.1	452.0	-234.5	0.00	0.00	0.00
4,200.0	50.47	155.96	3,815.9	-1,083.6	483.4	-250.8	0.00	0.00	0.00
4,300.0	50.47	155.96	3,879.6	-1,154.0	514.8	-267.1	0.00	0.00	0.00
4,400.0	50.47	155.96	3,943.2	-1,224.4	546.3	-283.4	0.00	0.00	0.00
4,499.0	50.47	155.96	4,006.2	-1,294.2	577.4	-299.6	0.00	0.00	0.00
4,500.0	50.45	155.96	4,006.9	-1,294.9	577.7	-299.7	2.02	-2.02	0.00
4,600.0	48.43	155.96	4,071.9	-1,364.3	608.7	-315.8	2.02	-2.02	0.00
4,700.0	46.41	155.96	4,139.6	-1,431.5	638.7	-331.3	2.02	-2.02	0.00
4,800.0	44.39	155.96	4,209.8	-1,496.5	667.7	-346.4	2.02	-2.02	0.00
4,900.0	42.37	155.96	4,282.4	-1,559.2	695.6	-360.9	2.02	-2.02	0.00
5,000.0	40.35	155.96	4,357.5	-1,619.6	722.6	-374.9	2.02	-2.02	0.00
5,100.0	38.33	155.96	4,434.8	-1,677.5	748.4	-388.3	2.02	-2.02	0.00



Database:	EDM	Local Co-ordinate Reference:	Well GROVES FARM W-34-33HN
Company:	Bayswater Exploration & Production, LLC	TVD Reference:	KB @ 4867.0usft (Original Well Elev)
Project:	DJ Basin	MD Reference:	KB @ 4867.0usft (Original Well Elev)
Site:	Groves Farm 34-L Pad	North Reference:	True
Well:	GROVES FARM W-34-33HN	Survey Calculation Method:	Minimum Curvature
Wellbore:	Wellbore #1		
Design:	Design #1		

Planned Survey									
Measured Depth (usft)	Inclination (°)	Azimuth (°)	Vertical Depth (usft)	+N/-S (usft)	+E/-W (usft)	Vertical Section (usft)	Dogleg Rate (°/100usft)	Build Rate (°/100usft)	Turn Rate (°/100usft)
5,200.0	36.31	155.96	4,514.3	-1,732.8	773.1	-401.1	2.02	-2.02	0.00
5,300.0	34.29	155.96	4,595.9	-1,785.6	796.6	-413.3	2.02	-2.02	0.00
5,400.0	32.27	155.96	4,679.5	-1,835.7	819.0	-424.9	2.02	-2.02	0.00
5,500.0	30.25	155.96	4,765.0	-1,883.1	840.1	-435.9	2.02	-2.02	0.00
5,600.0	28.23	155.96	4,852.3	-1,927.7	860.0	-446.2	2.02	-2.02	0.00
5,700.0	26.21	155.96	4,941.2	-1,969.5	878.7	-455.9	2.02	-2.02	0.00
5,800.0	24.19	155.96	5,031.7	-2,008.4	896.0	-464.9	2.02	-2.02	0.00
5,900.0	22.17	155.96	5,123.6	-2,044.3	912.1	-473.2	2.02	-2.02	0.00
6,000.0	20.15	155.96	5,216.8	-2,077.3	926.8	-480.8	2.02	-2.02	0.00
6,100.0	18.13	155.96	5,311.3	-2,107.3	940.1	-487.8	2.02	-2.02	0.00
6,200.0	16.11	155.96	5,406.9	-2,134.1	952.1	-494.0	2.02	-2.02	0.00
6,300.0	14.09	155.96	5,503.4	-2,157.9	962.8	-499.5	2.02	-2.02	0.00
6,400.0	12.07	155.96	5,600.8	-2,178.6	972.0	-504.3	2.02	-2.02	0.00
6,500.0	10.05	155.96	5,698.9	-2,196.1	979.8	-508.3	2.02	-2.02	0.00
6,600.0	8.03	155.96	5,797.7	-2,210.5	986.2	-511.7	2.02	-2.02	0.00
6,700.0	6.01	155.96	5,896.9	-2,221.6	991.2	-514.2	2.02	-2.02	0.00
6,800.0	3.99	155.96	5,996.5	-2,229.6	994.7	-516.1	2.02	-2.02	0.00
6,900.0	1.97	155.96	6,096.4	-2,234.4	996.8	-517.2	2.02	-2.02	0.00
6,997.7	0.00	271.69	6,194.0	-2,235.9	997.5	-517.5	2.02	-2.02	0.00
7,000.0	0.00	0.00	6,196.4	-2,235.9	997.5	-517.5	0.00	0.00	0.00
7,100.0	0.00	0.00	6,296.4	-2,235.9	997.5	-517.5	0.00	0.00	0.00
7,197.7	0.00	271.69	6,394.0	-2,235.9	997.5	-517.5	0.00	0.00	0.00
7,200.0	0.23	271.69	6,396.4	-2,235.9	997.5	-517.5	10.00	10.00	0.00
7,300.0	10.23	271.69	6,495.8	-2,235.6	988.4	-508.7	10.00	10.00	0.00
7,400.0	20.23	271.69	6,592.2	-2,234.9	962.2	-483.2	10.00	10.00	0.00
7,500.0	30.23	271.69	6,682.5	-2,233.6	919.6	-441.8	10.00	10.00	0.00
7,600.0	40.23	271.69	6,764.1	-2,231.9	862.0	-385.7	10.00	10.00	0.00
7,700.0	50.23	271.69	6,834.5	-2,229.8	791.2	-316.8	10.00	10.00	0.00
7,800.0	60.23	271.69	6,891.4	-2,227.4	709.1	-237.0	10.00	10.00	0.00
7,900.0	70.23	271.69	6,933.2	-2,224.7	618.5	-148.9	10.00	10.00	0.00
8,000.0	80.23	271.69	6,958.7	-2,221.9	522.0	-55.0	10.00	10.00	0.00
8,098.3	90.06	271.69	6,967.0	-2,219.0	424.2	40.1	10.00	10.00	0.00
GF W-34-33HN LP									
8,100.0	90.06	271.69	6,967.0	-2,218.9	422.5	41.8	0.00	0.00	0.00
8,200.0	90.06	271.69	6,966.9	-2,216.0	322.5	139.0	0.00	0.00	0.00
8,300.0	90.06	271.69	6,966.8	-2,213.0	222.6	236.2	0.00	0.00	0.00
8,400.0	90.06	271.69	6,966.7	-2,210.1	122.6	333.5	0.00	0.00	0.00
8,500.0	90.06	271.69	6,966.6	-2,207.1	22.7	430.7	0.00	0.00	0.00
8,600.0	90.06	271.69	6,966.5	-2,204.2	-77.3	527.9	0.00	0.00	0.00
8,700.0	90.06	271.69	6,966.4	-2,201.2	-177.3	625.1	0.00	0.00	0.00
8,800.0	90.06	271.69	6,966.3	-2,198.3	-277.2	722.4	0.00	0.00	0.00
8,900.0	90.06	271.69	6,966.2	-2,195.4	-377.2	819.6	0.00	0.00	0.00
9,000.0	90.06	271.69	6,966.1	-2,192.4	-477.1	916.8	0.00	0.00	0.00
9,100.0	90.06	271.69	6,966.0	-2,189.5	-577.1	1,014.0	0.00	0.00	0.00
9,200.0	90.06	271.69	6,965.9	-2,186.5	-677.0	1,111.3	0.00	0.00	0.00
9,300.0	90.06	271.69	6,965.8	-2,183.6	-777.0	1,208.5	0.00	0.00	0.00
9,400.0	90.06	271.69	6,965.6	-2,180.6	-876.9	1,305.7	0.00	0.00	0.00
9,500.0	90.06	271.69	6,965.5	-2,177.7	-976.9	1,402.9	0.00	0.00	0.00
9,600.0	90.06	271.69	6,965.4	-2,174.7	-1,076.9	1,500.2	0.00	0.00	0.00
9,700.0	90.06	271.69	6,965.3	-2,171.8	-1,176.8	1,597.4	0.00	0.00	0.00
9,800.0	90.06	271.69	6,965.2	-2,168.8	-1,276.8	1,694.6	0.00	0.00	0.00
9,900.0	90.06	271.69	6,965.1	-2,165.9	-1,376.7	1,791.8	0.00	0.00	0.00
10,000.0	90.06	271.69	6,965.0	-2,162.9	-1,476.7	1,889.1	0.00	0.00	0.00



Database:	EDM	Local Co-ordinate Reference:	Well GROVES FARM W-34-33HN
Company:	Bayswater Exploration & Production, LLC	TVD Reference:	KB @ 4867.0usft (Original Well Elev)
Project:	DJ Basin	MD Reference:	KB @ 4867.0usft (Original Well Elev)
Site:	Groves Farm 34-L Pad	North Reference:	True
Well:	GROVES FARM W-34-33HN	Survey Calculation Method:	Minimum Curvature
Wellbore:	Wellbore #1		
Design:	Design #1		

Planned Survey										
Measured Depth (usft)	Inclination (°)	Azimuth (°)	Vertical Depth (usft)	+N/-S (usft)	+E/-W (usft)	Vertical Section (usft)	Dogleg Rate (°/100usft)	Build Rate (°/100usft)	Turn Rate (°/100usft)	
10,100.0	90.06	271.69	6,964.9	-2,160.0	-1,576.6	1,986.3	0.00	0.00	0.00	
10,200.0	90.06	271.69	6,964.8	-2,157.0	-1,676.6	2,083.5	0.00	0.00	0.00	
10,300.0	90.06	271.69	6,964.7	-2,154.1	-1,776.6	2,180.7	0.00	0.00	0.00	
10,400.0	90.06	271.69	6,964.6	-2,151.1	-1,876.5	2,278.0	0.00	0.00	0.00	
10,500.0	90.06	271.69	6,964.5	-2,148.2	-1,976.5	2,375.2	0.00	0.00	0.00	
10,600.0	90.06	271.69	6,964.4	-2,145.2	-2,076.4	2,472.4	0.00	0.00	0.00	
10,700.0	90.06	271.69	6,964.3	-2,142.3	-2,176.4	2,569.6	0.00	0.00	0.00	
10,800.0	90.06	271.69	6,964.2	-2,139.3	-2,276.3	2,666.9	0.00	0.00	0.00	
10,900.0	90.06	271.69	6,964.1	-2,136.4	-2,376.3	2,764.1	0.00	0.00	0.00	
11,000.0	90.06	271.69	6,964.0	-2,133.4	-2,476.3	2,861.3	0.00	0.00	0.00	
11,100.0	90.06	271.69	6,963.9	-2,130.5	-2,576.2	2,958.5	0.00	0.00	0.00	
11,200.0	90.06	271.69	6,963.8	-2,127.5	-2,676.2	3,055.8	0.00	0.00	0.00	
11,300.0	90.06	271.69	6,963.7	-2,124.6	-2,776.1	3,153.0	0.00	0.00	0.00	
11,400.0	90.06	271.69	6,963.6	-2,121.6	-2,876.1	3,250.2	0.00	0.00	0.00	
11,500.0	90.06	271.69	6,963.5	-2,118.7	-2,976.0	3,347.4	0.00	0.00	0.00	
11,600.0	90.06	271.69	6,963.4	-2,115.8	-3,076.0	3,444.7	0.00	0.00	0.00	
11,700.0	90.06	271.69	6,963.3	-2,112.8	-3,175.9	3,541.9	0.00	0.00	0.00	
11,800.0	90.06	271.69	6,963.2	-2,109.9	-3,275.9	3,639.1	0.00	0.00	0.00	
11,900.0	90.06	271.69	6,963.1	-2,106.9	-3,375.9	3,736.3	0.00	0.00	0.00	
12,000.0	90.06	271.69	6,963.0	-2,104.0	-3,475.8	3,833.6	0.00	0.00	0.00	
12,100.0	90.06	271.69	6,962.8	-2,101.0	-3,575.8	3,930.8	0.00	0.00	0.00	
12,200.0	90.06	271.69	6,962.7	-2,098.1	-3,675.7	4,028.0	0.00	0.00	0.00	
12,300.0	90.06	271.69	6,962.6	-2,095.1	-3,775.7	4,125.2	0.00	0.00	0.00	
12,400.0	90.06	271.69	6,962.5	-2,092.2	-3,875.6	4,222.5	0.00	0.00	0.00	
12,500.0	90.06	271.69	6,962.4	-2,089.2	-3,975.6	4,319.7	0.00	0.00	0.00	
12,600.0	90.06	271.69	6,962.3	-2,086.3	-4,075.6	4,416.9	0.00	0.00	0.00	
12,700.0	90.06	271.69	6,962.2	-2,083.3	-4,175.5	4,514.1	0.00	0.00	0.00	
12,800.0	90.06	271.69	6,962.1	-2,080.4	-4,275.5	4,611.4	0.00	0.00	0.00	
12,900.0	90.06	271.69	6,962.0	-2,077.4	-4,375.4	4,708.6	0.00	0.00	0.00	
12,917.8	90.06	271.69	6,962.0	-2,076.9	-4,393.2	4,725.9	0.00	0.00	0.00	
12,918.4	90.06	271.70	6,962.0	-2,076.9	-4,393.8	4,726.5	2.00	-0.02	2.00	
GF W-34-33HN VP										
13,000.0	90.06	271.70	6,961.9	-2,074.5	-4,475.4	4,805.8	0.00	0.00	0.00	
13,100.0	90.06	271.70	6,961.8	-2,071.5	-4,575.3	4,903.0	0.00	0.00	0.00	
13,200.0	90.06	271.70	6,961.7	-2,068.5	-4,675.3	5,000.2	0.00	0.00	0.00	
13,300.0	90.06	271.70	6,961.6	-2,065.6	-4,775.3	5,097.5	0.00	0.00	0.00	
13,400.0	90.06	271.70	6,961.5	-2,062.6	-4,875.2	5,194.7	0.00	0.00	0.00	
13,500.0	90.06	271.70	6,961.4	-2,059.6	-4,975.2	5,291.9	0.00	0.00	0.00	
13,600.0	90.06	271.70	6,961.3	-2,056.6	-5,075.1	5,389.1	0.00	0.00	0.00	
13,700.0	90.06	271.70	6,961.2	-2,053.7	-5,175.1	5,486.3	0.00	0.00	0.00	
13,800.0	90.06	271.70	6,961.1	-2,050.7	-5,275.0	5,583.6	0.00	0.00	0.00	
13,900.0	90.06	271.70	6,961.0	-2,047.7	-5,375.0	5,680.8	0.00	0.00	0.00	
14,000.0	90.06	271.70	6,960.9	-2,044.8	-5,474.9	5,778.0	0.00	0.00	0.00	
14,100.0	90.06	271.70	6,960.8	-2,041.8	-5,574.9	5,875.2	0.00	0.00	0.00	
14,200.0	90.06	271.70	6,960.7	-2,038.8	-5,674.9	5,972.4	0.00	0.00	0.00	
14,300.0	90.06	271.70	6,960.6	-2,035.9	-5,774.8	6,069.7	0.00	0.00	0.00	
14,400.0	90.06	271.70	6,960.5	-2,032.9	-5,874.8	6,166.9	0.00	0.00	0.00	
14,500.0	90.06	271.70	6,960.4	-2,029.9	-5,974.7	6,264.1	0.00	0.00	0.00	
14,600.0	90.06	271.70	6,960.3	-2,027.0	-6,074.7	6,361.3	0.00	0.00	0.00	
14,700.0	90.06	271.70	6,960.2	-2,024.0	-6,174.6	6,458.5	0.00	0.00	0.00	
14,800.0	90.06	271.70	6,960.1	-2,021.0	-6,274.6	6,555.8	0.00	0.00	0.00	
14,900.0	90.06	271.70	6,959.9	-2,018.1	-6,374.5	6,653.0	0.00	0.00	0.00	
15,000.0	90.06	271.70	6,959.8	-2,015.1	-6,474.5	6,750.2	0.00	0.00	0.00	
15,100.0	90.06	271.70	6,959.7	-2,012.1	-6,574.5	6,847.4	0.00	0.00	0.00	



Database:	EDM	Local Co-ordinate Reference:	Well GROVES FARM W-34-33HN
Company:	Bayswater Exploration & Production, LLC	TVD Reference:	KB @ 4867.0usft (Original Well Elev)
Project:	DJ Basin	MD Reference:	KB @ 4867.0usft (Original Well Elev)
Site:	Groves Farm 34-L Pad	North Reference:	True
Well:	GROVES FARM W-34-33HN	Survey Calculation Method:	Minimum Curvature
Wellbore:	Wellbore #1		
Design:	Design #1		

Planned Survey										
Measured Depth (usft)	Inclination (°)	Azimuth (°)	Vertical Depth (usft)	+N/-S (usft)	+E/-W (usft)	Vertical Section (usft)	Dogleg Rate (°/100usft)	Build Rate (°/100usft)	Turn Rate (°/100usft)	
15,200.0	90.06	271.70	6,959.6	-2,009.2	-6,674.4	6,944.6	0.00	0.00	0.00	
15,300.0	90.06	271.70	6,959.5	-2,006.2	-6,774.4	7,041.9	0.00	0.00	0.00	
15,400.0	90.06	271.70	6,959.4	-2,003.2	-6,874.3	7,139.1	0.00	0.00	0.00	
15,500.0	90.06	271.70	6,959.3	-2,000.2	-6,974.3	7,236.3	0.00	0.00	0.00	
15,600.0	90.06	271.70	6,959.2	-1,997.3	-7,074.2	7,333.5	0.00	0.00	0.00	
15,700.0	90.06	271.70	6,959.1	-1,994.3	-7,174.2	7,430.7	0.00	0.00	0.00	
15,800.0	90.06	271.70	6,959.0	-1,991.3	-7,274.1	7,528.0	0.00	0.00	0.00	
15,900.0	90.06	271.70	6,958.9	-1,988.4	-7,374.1	7,625.2	0.00	0.00	0.00	
16,000.0	90.06	271.70	6,958.8	-1,985.4	-7,474.1	7,722.4	0.00	0.00	0.00	
16,100.0	90.06	271.70	6,958.7	-1,982.4	-7,574.0	7,819.6	0.00	0.00	0.00	
16,200.0	90.06	271.70	6,958.6	-1,979.5	-7,674.0	7,916.8	0.00	0.00	0.00	
16,300.0	90.06	271.70	6,958.5	-1,976.5	-7,773.9	8,014.1	0.00	0.00	0.00	
16,400.0	90.06	271.70	6,958.4	-1,973.5	-7,873.9	8,111.3	0.00	0.00	0.00	
16,500.0	90.06	271.70	6,958.3	-1,970.6	-7,973.8	8,208.5	0.00	0.00	0.00	
16,600.0	90.06	271.70	6,958.2	-1,967.6	-8,073.8	8,305.7	0.00	0.00	0.00	
16,700.0	90.06	271.70	6,958.1	-1,964.6	-8,173.8	8,402.9	0.00	0.00	0.00	
16,800.0	90.06	271.70	6,958.0	-1,961.7	-8,273.7	8,500.2	0.00	0.00	0.00	
16,900.0	90.06	271.70	6,957.9	-1,958.7	-8,373.7	8,597.4	0.00	0.00	0.00	
17,000.0	90.06	271.70	6,957.8	-1,955.7	-8,473.6	8,694.6	0.00	0.00	0.00	
17,100.0	90.06	271.70	6,957.7	-1,952.7	-8,573.6	8,791.8	0.00	0.00	0.00	
17,200.0	90.06	271.70	6,957.6	-1,949.8	-8,673.5	8,889.1	0.00	0.00	0.00	
17,300.0	90.06	271.70	6,957.5	-1,946.8	-8,773.5	8,986.3	0.00	0.00	0.00	
17,400.0	90.06	271.70	6,957.4	-1,943.8	-8,873.4	9,083.5	0.00	0.00	0.00	
17,500.0	90.06	271.70	6,957.3	-1,940.9	-8,973.4	9,180.7	0.00	0.00	0.00	
17,600.0	90.06	271.70	6,957.2	-1,937.9	-9,073.4	9,277.9	0.00	0.00	0.00	
17,700.0	90.06	271.70	6,957.1	-1,934.9	-9,173.3	9,375.2	0.00	0.00	0.00	
17,749.3	90.06	271.70	6,957.0	-1,933.5	-9,222.6	9,423.1	0.00	0.00	0.00	
GF W-34-33HN PBHL										

Design Targets										
Target Name	Dip Angle (°)	Dip Dir. (°)	TVD (usft)	+N/-S (usft)	+E/-W (usft)	Northing (usft)	Easting (usft)	Latitude	Longitude	
GF W-34-33HN PBHL - hit/miss target - Shape - Point	0.00	0.00	6,957.0	-1,933.5	-9,222.6	1,435,013.17	3,229,035.78	40° 31' 28.528 N	104° 40' 34.010 W	
GF W-34-33HN VP - plan hits target center - Point	0.00	0.00	6,962.0	-2,076.9	-4,393.8	1,434,916.43	3,233,865.75	40° 31' 27.124 N	104° 39' 31.478 W	
GF W-34-33HN LP - plan hits target center - Point	0.00	0.00	6,967.0	-2,219.0	424.2	1,434,820.90	3,238,684.92	40° 31' 25.723 N	104° 38' 29.087 W	