



BAYSWATER

Bayswater Exploration & Production, LLC

Pad Name: Groves Farm 34-L Pad
Well Name: GROVES FARM U-34-33HN
Ground Level: 4844.0
SHL Latitude: 40° 31' 47.949 N
SHL Longitude: 104° 38' 34.570 W

SECTION DETAILS

Sec	MD	Inc	Azi	TVD	+N/-S	+E/-W	Dleg	TFace	VSect	Target
1	0.0	0.00	0.00	0.0	0.0	0.0	0.00	0.00	0.0	
2	1500.0	0.00	0.00	1500.0	0.0	0.0	0.00	0.00	0.0	
3	3403.1	38.06	143.97	3266.2	-492.7	358.3	2.00	143.97	-275.0	
4	5037.3	38.06	143.97	4552.9	-1307.5	950.9	0.00	0.00	-729.7	
5	6940.4	0.00	271.36	6319.0	-1800.2	1309.2	2.00	180.00	-1004.7	
6	7140.4	0.00	271.36	6519.0	-1800.2	1309.2	0.00	0.00	-1004.7	
7	8043.2	90.28	271.36	7092.0	-1786.5	733.6	10.00	0.00	-438.7	GF U-34-33HN LP
8	8060.4	90.28	271.70	7091.9	-1786.1	716.4	2.00	89.99	-421.7	
9	13142.1	90.28	271.70	7067.2	-1635.1	-4363.0	0.00	0.00	4568.2	
10	13176.5	90.28	271.02	7067.0	-1634.2	-4397.3	2.00	-90.00	4602.0	GF U-34-33HN VP
11	18311.0	90.28	271.02	7042.0	-1543.2	-9531.0	0.00	0.00	9655.1	GF U-34-33HN PBHL

DESIGN TARGET DETAILS

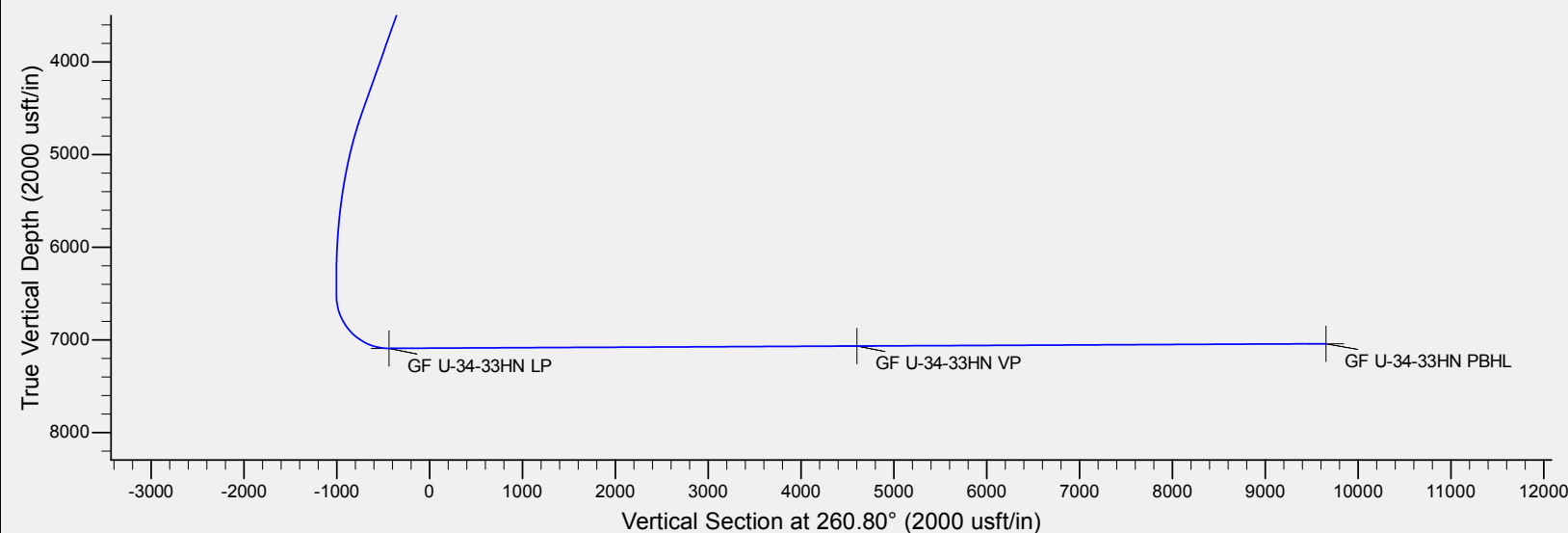
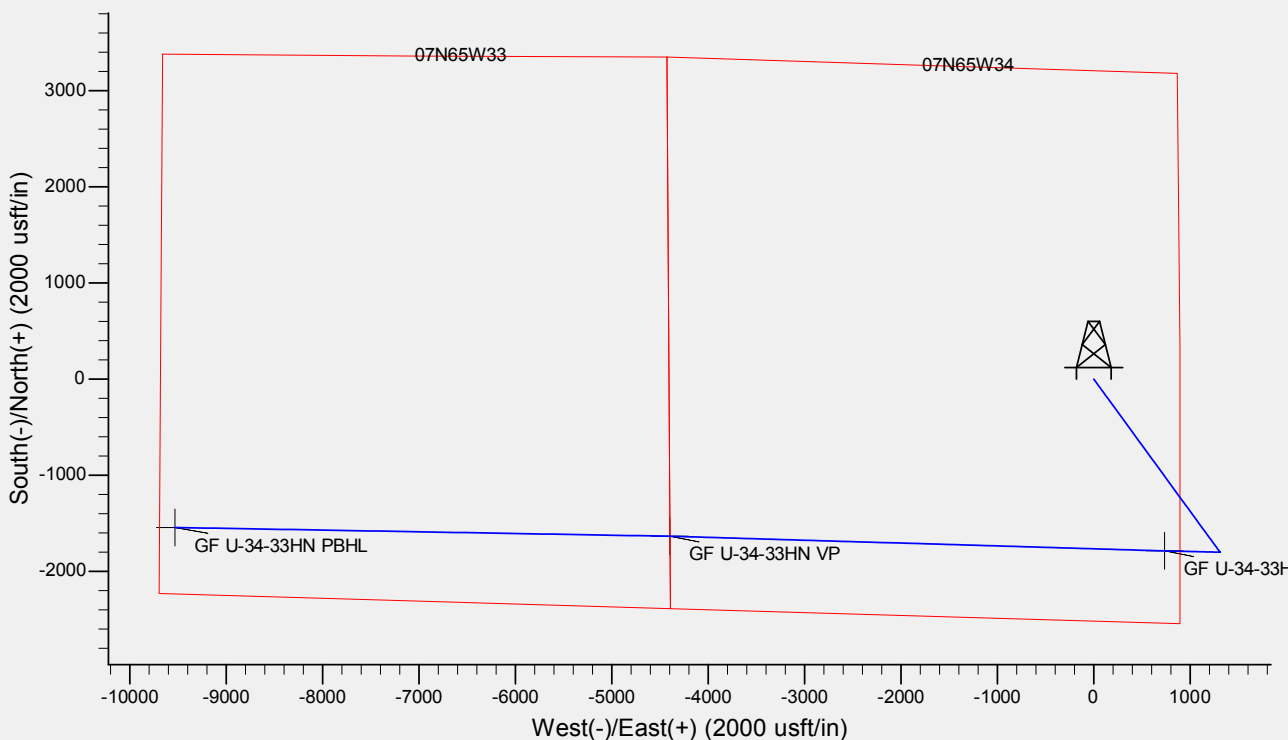
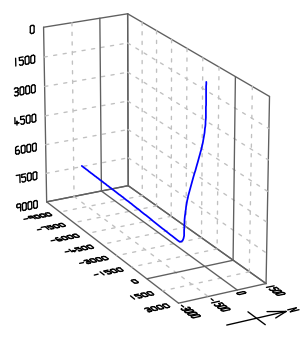
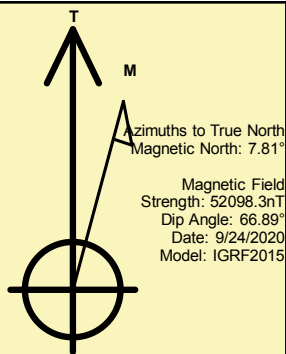
Name	TVD	+N/-S	+E/-W	Northing	Easting	Latitude	Longitude	Shape
GF U-34-33HN LP	7092.0	-1786.5	733.6	1435286.55	3238990.67	40° 31' 30.295 N	104° 38' 25.069 W	Point
GF U-34-33HN VP	- plan hits target center 7067.0	-1634.2	-4397.3	1435389.25	3233858.48	40° 31' 31.796 N	104° 39' 31.514 W	Point
GF U-34-33HN PBHL	- plan hits target center 7042.0	-1543.2	-9531.0	1435430.70	3228724.15	40° 31' 32.682 N	104° 40' 37.996 W	Point

REFERENCE INFORMATION

Co-ordinate (N/E) Reference: Well GROVES FARM U-34-33HN, True North
Vertical (TVD) Reference: KB @ 4867.0usft (Original Well Elev)
Section (VS) Reference: Slot - (0.0N, 0.0E)
Measured Depth Reference: KB @ 4867.0usft (Original Well Elev)
Calculation Method: Minimum Curvature

CASING DETAILS

No casing data is available





BAYSWATER

Bayswater Exploration & Production, LLC

DJ Basin

Groves Farm 34-L Pad

GROVES FARM U-34-33HN

Wellbore #1

Plan: Design #1

Standard Planning Report

26 September, 2020



Database:	EDM	Local Co-ordinate Reference:	Well GROVES FARM U-34-33HN
Company:	Bayswater Exploration & Production, LLC	TVD Reference:	KB @ 4867.0usft (Original Well Elev)
Project:	DJ Basin	MD Reference:	KB @ 4867.0usft (Original Well Elev)
Site:	Groves Farm 34-L Pad	North Reference:	True
Well:	GROVES FARM U-34-33HN	Survey Calculation Method:	Minimum Curvature
Wellbore:	Wellbore #1		
Design:	Design #1		

Project	DJ Basin, DJ Basin		
Map System:	US State Plane 1983	System Datum:	Mean Sea Level
Geo Datum:	North American Datum 1983		
Map Zone:	Colorado Northern Zone		

Site		Groves Farm 34-L Pad			
Site Position:		Northing:	1,437,185.82 usft	Latitude:	40° 31' 49.134 N
From:	Lat/Long	Easting:	3,238,241.98 usft	Longitude:	104° 38' 34.526 W
Position Uncertainty:	0.0 usft	Slot Radius:	13-3/16 "	Grid Convergence:	0.55

Well	GROVES FARM U-34-33HN					
Well Position	+N/-S	-119.9 usft	Northing:	1,437,065.93 usft	Latitude:	40° 31' 47.949 N
	+E/-W	-3.3 usft	Easting:	3,238,239.80 usft	Longitude:	104° 38' 34.570 W
Position Uncertainty		0.0 usft	Wellhead Elevation:		Ground Level:	4,844.0 usft

Wellbore	Wellbore #1				
Magnetics	Model Name	Sample Date	Declination (°)	Dip Angle (°)	Field Strength (nT)
	IGRF2015	9/24/2020	7.81	66.89	52,098.33169006

Design	Design #1				
Audit Notes:					
Version:		Phase:	PLAN	Tie On Depth:	0.0
Vertical Section:	Depth From (TVD) (usft)	+N/-S (usft)	+E/-W (usft)	Direction (°)	
	0.0	0.0	0.0	260.80	

Plan Survey Tool Program	Date	9/24/2020			
Depth From (usft)	Depth To (usft)	Survey (Wellbore)	Tool Name	Remarks	
1	0.0	18,311.0	Design #1 (Wellbore #1)	MWD	
				OWSG MWD - Standard	



Database:	EDM	Local Co-ordinate Reference:	Well GROVES FARM U-34-33HN
Company:	Bayswater Exploration & Production, LLC	TVD Reference:	KB @ 4867.0usft (Original Well Elev)
Project:	DJ Basin	MD Reference:	KB @ 4867.0usft (Original Well Elev)
Site:	Groves Farm 34-L Pad	North Reference:	True
Well:	GROVES FARM U-34-33HN	Survey Calculation Method:	Minimum Curvature
Wellbore:	Wellbore #1		
Design:	Design #1		

Plan Sections										
Measured Depth (usft)	Inclination (°)	Azimuth (°)	Vertical Depth (usft)	+N/-S (usft)	+E/-W (usft)	Dogleg Rate (°/100usft)	Build Rate (°/100usft)	Turn Rate (°/100usft)	TFO (°)	Target
0.0	0.00	0.00	0.0	0.0	0.0	0.00	0.00	0.00	0.00	
1,500.0	0.00	0.00	1,500.0	0.0	0.0	0.00	0.00	0.00	0.00	
3,403.1	38.06	143.97	3,266.2	-492.7	358.3	2.00	2.00	0.00	143.97	
5,037.3	38.06	143.97	4,552.9	-1,307.5	950.9	0.00	0.00	0.00	0.00	
6,940.4	0.00	271.36	6,319.0	-1,800.2	1,309.2	2.00	-2.00	0.00	180.00	
7,140.4	0.00	271.36	6,519.0	-1,800.2	1,309.2	0.00	0.00	0.00	0.00	
8,043.2	90.28	271.36	7,092.0	-1,786.5	733.6	10.00	10.00	0.00	0.00	GF U-34-33HN LP
8,060.4	90.28	271.70	7,091.9	-1,786.1	716.4	2.00	0.00	2.00	89.99	
13,142.1	90.28	271.70	7,067.2	-1,635.1	-4,363.0	0.00	0.00	0.00	0.00	
13,176.5	90.28	271.02	7,067.0	-1,634.2	-4,397.3	2.00	0.00	-2.00	-90.00	GF U-34-33HN VP
18,311.0	90.28	271.02	7,042.0	-1,543.2	-9,531.0	0.00	0.00	0.00	0.00	GF U-34-33HN PBHL



Database:	EDM	Local Co-ordinate Reference:	Well GROVES FARM U-34-33HN
Company:	Bayswater Exploration & Production, LLC	TVD Reference:	KB @ 4867.0usft (Original Well Elev)
Project:	DJ Basin	MD Reference:	KB @ 4867.0usft (Original Well Elev)
Site:	Groves Farm 34-L Pad	North Reference:	True
Well:	GROVES FARM U-34-33HN	Survey Calculation Method:	Minimum Curvature
Wellbore:	Wellbore #1		
Design:	Design #1		

Planned Survey									
Measured Depth (usft)	Inclination (°)	Azimuth (°)	Vertical Depth (usft)	+N/-S (usft)	+E/-W (usft)	Vertical Section (usft)	Dogleg Rate (°/100usft)	Build Rate (°/100usft)	Turn Rate (°/100usft)
0.0	0.00	0.00	0.0	0.0	0.0	0.0	0.00	0.00	0.00
100.0	0.00	0.00	100.0	0.0	0.0	0.0	0.00	0.00	0.00
200.0	0.00	0.00	200.0	0.0	0.0	0.0	0.00	0.00	0.00
300.0	0.00	0.00	300.0	0.0	0.0	0.0	0.00	0.00	0.00
400.0	0.00	0.00	400.0	0.0	0.0	0.0	0.00	0.00	0.00
500.0	0.00	0.00	500.0	0.0	0.0	0.0	0.00	0.00	0.00
600.0	0.00	0.00	600.0	0.0	0.0	0.0	0.00	0.00	0.00
700.0	0.00	0.00	700.0	0.0	0.0	0.0	0.00	0.00	0.00
800.0	0.00	0.00	800.0	0.0	0.0	0.0	0.00	0.00	0.00
900.0	0.00	0.00	900.0	0.0	0.0	0.0	0.00	0.00	0.00
1,000.0	0.00	0.00	1,000.0	0.0	0.0	0.0	0.00	0.00	0.00
1,100.0	0.00	0.00	1,100.0	0.0	0.0	0.0	0.00	0.00	0.00
1,200.0	0.00	0.00	1,200.0	0.0	0.0	0.0	0.00	0.00	0.00
1,300.0	0.00	0.00	1,300.0	0.0	0.0	0.0	0.00	0.00	0.00
1,400.0	0.00	0.00	1,400.0	0.0	0.0	0.0	0.00	0.00	0.00
1,500.0	0.00	0.00	1,500.0	0.0	0.0	0.0	0.00	0.00	0.00
1,600.0	2.00	143.97	1,600.0	-1.4	1.0	-0.8	2.00	2.00	0.00
1,700.0	4.00	143.97	1,699.8	-5.6	4.1	-3.1	2.00	2.00	0.00
1,800.0	6.00	143.97	1,799.5	-12.7	9.2	-7.1	2.00	2.00	0.00
1,900.0	8.00	143.97	1,898.7	-22.5	16.4	-12.6	2.00	2.00	0.00
2,000.0	10.00	143.97	1,997.5	-35.2	25.6	-19.6	2.00	2.00	0.00
2,100.0	12.00	143.97	2,095.6	-50.6	36.8	-28.3	2.00	2.00	0.00
2,200.0	14.00	143.97	2,193.1	-68.8	50.1	-38.4	2.00	2.00	0.00
2,300.0	16.00	143.97	2,289.6	-89.8	65.3	-50.1	2.00	2.00	0.00
2,400.0	18.00	143.97	2,385.3	-113.4	82.5	-63.3	2.00	2.00	0.00
2,500.0	20.00	143.97	2,479.8	-139.7	101.6	-78.0	2.00	2.00	0.00
2,600.0	22.00	143.97	2,573.2	-168.7	122.7	-94.2	2.00	2.00	0.00
2,700.0	24.00	143.97	2,665.2	-200.3	145.7	-111.8	2.00	2.00	0.00
2,800.0	26.00	143.97	2,755.8	-234.5	170.5	-130.9	2.00	2.00	0.00
2,900.0	28.00	143.97	2,844.9	-271.2	197.2	-151.4	2.00	2.00	0.00
3,000.0	30.00	143.97	2,932.4	-310.4	225.7	-173.2	2.00	2.00	0.00
3,100.0	32.00	143.97	3,018.1	-352.1	256.0	-196.5	2.00	2.00	0.00
3,200.0	34.00	143.97	3,102.0	-396.1	288.1	-221.1	2.00	2.00	0.00
3,300.0	36.00	143.97	3,183.9	-442.5	321.8	-246.9	2.00	2.00	0.00
3,400.0	38.00	143.97	3,263.7	-491.2	357.2	-274.1	2.00	2.00	0.00
3,403.1	38.06	143.97	3,266.2	-492.7	358.3	-275.0	2.00	2.00	0.00
3,500.0	38.06	143.97	3,342.5	-541.0	393.5	-301.9	0.00	0.00	0.00
3,600.0	38.06	143.97	3,421.2	-590.9	429.7	-329.8	0.00	0.00	0.00
3,700.0	38.06	143.97	3,499.9	-640.7	466.0	-357.6	0.00	0.00	0.00
3,800.0	38.06	143.97	3,578.7	-690.6	502.2	-385.4	0.00	0.00	0.00
3,900.0	38.06	143.97	3,657.4	-740.4	538.5	-413.2	0.00	0.00	0.00
4,000.0	38.06	143.97	3,736.2	-790.3	574.8	-441.1	0.00	0.00	0.00
4,100.0	38.06	143.97	3,814.9	-840.2	611.0	-468.9	0.00	0.00	0.00
4,200.0	38.06	143.97	3,893.6	-890.0	647.3	-496.7	0.00	0.00	0.00
4,300.0	38.06	143.97	3,972.4	-939.9	683.5	-524.5	0.00	0.00	0.00
4,400.0	38.06	143.97	4,051.1	-989.7	719.8	-552.4	0.00	0.00	0.00
4,500.0	38.06	143.97	4,129.8	-1,039.6	756.1	-580.2	0.00	0.00	0.00
4,600.0	38.06	143.97	4,208.6	-1,089.5	792.3	-608.0	0.00	0.00	0.00
4,700.0	38.06	143.97	4,287.3	-1,139.3	828.6	-635.8	0.00	0.00	0.00
4,800.0	38.06	143.97	4,366.0	-1,189.2	864.9	-663.7	0.00	0.00	0.00
4,900.0	38.06	143.97	4,444.8	-1,239.0	901.1	-691.5	0.00	0.00	0.00
5,000.0	38.06	143.97	4,523.5	-1,288.9	937.4	-719.3	0.00	0.00	0.00
5,037.3	38.06	143.97	4,552.9	-1,307.5	950.9	-729.7	0.00	0.00	0.00
5,100.0	36.81	143.97	4,602.7	-1,338.3	973.3	-746.9	2.00	-2.00	0.00



Database:	EDM	Local Co-ordinate Reference:	Well GROVES FARM U-34-33HN
Company:	Bayswater Exploration & Production, LLC	TVD Reference:	KB @ 4867.0usft (Original Well Elev)
Project:	DJ Basin	MD Reference:	KB @ 4867.0usft (Original Well Elev)
Site:	Groves Farm 34-L Pad	North Reference:	True
Well:	GROVES FARM U-34-33HN	Survey Calculation Method:	Minimum Curvature
Wellbore:	Wellbore #1		
Design:	Design #1		

Planned Survey									
Measured Depth (usft)	Inclination (°)	Azimuth (°)	Vertical Depth (usft)	+N/-S (usft)	+E/-W (usft)	Vertical Section (usft)	Dogleg Rate (°/100usft)	Build Rate (°/100usft)	Turn Rate (°/100usft)
5,200.0	34.81	143.97	4,683.7	-1,385.6	1,007.7	-773.3	2.00	-2.00	0.00
5,300.0	32.81	143.97	4,766.8	-1,430.6	1,040.4	-798.4	2.00	-2.00	0.00
5,400.0	30.81	143.97	4,851.8	-1,473.3	1,071.4	-822.2	2.00	-2.00	0.00
5,500.0	28.81	143.97	4,938.6	-1,513.5	1,100.7	-844.6	2.00	-2.00	0.00
5,600.0	26.81	143.97	5,027.0	-1,551.2	1,128.1	-865.7	2.00	-2.00	0.00
5,700.0	24.81	143.97	5,117.0	-1,586.4	1,153.7	-885.3	2.00	-2.00	0.00
5,800.0	22.81	143.97	5,208.5	-1,619.0	1,177.5	-903.6	2.00	-2.00	0.00
5,900.0	20.81	143.97	5,301.4	-1,649.1	1,199.3	-920.3	2.00	-2.00	0.00
6,000.0	18.81	143.97	5,395.4	-1,676.5	1,219.2	-935.6	2.00	-2.00	0.00
6,100.0	16.81	143.97	5,490.7	-1,701.2	1,237.2	-949.4	2.00	-2.00	0.00
6,200.0	14.81	143.97	5,586.9	-1,723.2	1,253.3	-961.7	2.00	-2.00	0.00
6,300.0	12.81	143.97	5,684.0	-1,742.5	1,267.3	-972.5	2.00	-2.00	0.00
6,400.0	10.81	143.97	5,781.8	-1,759.1	1,279.3	-981.7	2.00	-2.00	0.00
6,500.0	8.81	143.97	5,880.4	-1,772.9	1,289.3	-989.4	2.00	-2.00	0.00
6,600.0	6.81	143.97	5,979.4	-1,783.9	1,297.3	-995.5	2.00	-2.00	0.00
6,700.0	4.81	143.97	6,078.9	-1,792.0	1,303.3	-1,000.1	2.00	-2.00	0.00
6,800.0	2.81	143.97	6,178.7	-1,797.4	1,307.2	-1,003.1	2.00	-2.00	0.00
6,900.0	0.81	143.97	6,278.6	-1,800.0	1,309.1	-1,004.5	2.00	-2.00	0.00
6,940.4	0.00	271.36	6,319.0	-1,800.2	1,309.2	-1,004.7	2.00	-2.00	0.00
7,000.0	0.00	0.00	6,378.6	-1,800.2	1,309.2	-1,004.7	0.00	0.00	0.00
7,100.0	0.00	0.00	6,478.6	-1,800.2	1,309.2	-1,004.7	0.00	0.00	0.00
7,140.4	0.00	271.36	6,519.0	-1,800.2	1,309.2	-1,004.7	0.00	0.00	0.00
7,200.0	5.96	271.36	6,578.5	-1,800.1	1,306.1	-1,001.6	10.00	10.00	0.00
7,300.0	15.96	271.36	6,676.6	-1,799.7	1,287.1	-983.0	10.00	10.00	0.00
7,400.0	25.96	271.36	6,769.9	-1,798.8	1,251.4	-947.8	10.00	10.00	0.00
7,500.0	35.96	271.36	6,855.5	-1,797.6	1,200.1	-897.3	10.00	10.00	0.00
7,600.0	45.96	271.36	6,930.9	-1,796.1	1,134.6	-833.0	10.00	10.00	0.00
7,700.0	55.96	271.36	6,993.8	-1,794.2	1,057.1	-756.7	10.00	10.00	0.00
7,800.0	65.96	271.36	7,042.3	-1,792.1	969.8	-670.9	10.00	10.00	0.00
7,900.0	75.96	271.36	7,074.9	-1,789.9	875.4	-578.0	10.00	10.00	0.00
8,000.0	85.96	271.36	7,090.6	-1,787.6	776.8	-481.1	10.00	10.00	0.00
8,043.2	90.28	271.36	7,092.0	-1,786.5	733.6	-438.7	10.00	10.00	0.00
GF U-34-33HN LP									
8,060.4	90.28	271.70	7,091.9	-1,786.1	716.4	-421.7	2.00	0.00	2.00
8,100.0	90.28	271.70	7,091.7	-1,784.9	676.8	-382.9	0.00	0.00	0.00
8,200.0	90.28	271.70	7,091.2	-1,781.9	576.9	-284.7	0.00	0.00	0.00
8,300.0	90.28	271.70	7,090.7	-1,779.0	476.9	-186.5	0.00	0.00	0.00
8,400.0	90.28	271.70	7,090.3	-1,776.0	377.0	-88.3	0.00	0.00	0.00
8,500.0	90.28	271.70	7,089.8	-1,773.0	277.0	9.9	0.00	0.00	0.00
8,600.0	90.28	271.70	7,089.3	-1,770.1	177.1	108.1	0.00	0.00	0.00
8,700.0	90.28	271.70	7,088.8	-1,767.1	77.1	206.3	0.00	0.00	0.00
8,800.0	90.28	271.70	7,088.3	-1,764.1	-22.8	304.5	0.00	0.00	0.00
8,900.0	90.28	271.70	7,087.8	-1,761.1	-122.8	402.7	0.00	0.00	0.00
9,000.0	90.28	271.70	7,087.3	-1,758.2	-222.7	500.9	0.00	0.00	0.00
9,100.0	90.28	271.70	7,086.9	-1,755.2	-322.7	599.1	0.00	0.00	0.00
9,200.0	90.28	271.70	7,086.4	-1,752.2	-422.7	697.3	0.00	0.00	0.00
9,300.0	90.28	271.70	7,085.9	-1,749.2	-522.6	795.5	0.00	0.00	0.00
9,400.0	90.28	271.70	7,085.4	-1,746.3	-622.6	893.7	0.00	0.00	0.00
9,500.0	90.28	271.70	7,084.9	-1,743.3	-722.5	991.9	0.00	0.00	0.00
9,600.0	90.28	271.70	7,084.4	-1,740.3	-822.5	1,090.1	0.00	0.00	0.00
9,700.0	90.28	271.70	7,083.9	-1,737.4	-922.4	1,188.3	0.00	0.00	0.00
9,800.0	90.28	271.70	7,083.4	-1,734.4	-1,022.4	1,286.4	0.00	0.00	0.00
9,900.0	90.28	271.70	7,083.0	-1,731.4	-1,122.3	1,384.6	0.00	0.00	0.00



Database:	EDM	Local Co-ordinate Reference:	Well GROVES FARM U-34-33HN
Company:	Bayswater Exploration & Production, LLC	TVD Reference:	KB @ 4867.0usft (Original Well Elev)
Project:	DJ Basin	MD Reference:	KB @ 4867.0usft (Original Well Elev)
Site:	Groves Farm 34-L Pad	North Reference:	True
Well:	GROVES FARM U-34-33HN	Survey Calculation Method:	Minimum Curvature
Wellbore:	Wellbore #1		
Design:	Design #1		

Planned Survey										
Measured Depth (usft)	Inclination (°)	Azimuth (°)	Vertical Depth (usft)	+N/-S (usft)	+E/-W (usft)	Vertical Section (usft)	Dogleg Rate (°/100usft)	Build Rate (°/100usft)	Turn Rate (°/100usft)	
10,000.0	90.28	271.70	7,082.5	-1,728.4	-1,222.3	1,482.8	0.00	0.00	0.00	
10,100.0	90.28	271.70	7,082.0	-1,725.5	-1,322.2	1,581.0	0.00	0.00	0.00	
10,200.0	90.28	271.70	7,081.5	-1,722.5	-1,422.2	1,679.2	0.00	0.00	0.00	
10,300.0	90.28	271.70	7,081.0	-1,719.5	-1,522.2	1,777.4	0.00	0.00	0.00	
10,400.0	90.28	271.70	7,080.5	-1,716.6	-1,622.1	1,875.6	0.00	0.00	0.00	
10,500.0	90.28	271.70	7,080.0	-1,713.6	-1,722.1	1,973.8	0.00	0.00	0.00	
10,600.0	90.28	271.70	7,079.5	-1,710.6	-1,822.0	2,072.0	0.00	0.00	0.00	
10,700.0	90.28	271.70	7,079.1	-1,707.6	-1,922.0	2,170.2	0.00	0.00	0.00	
10,800.0	90.28	271.70	7,078.6	-1,704.7	-2,021.9	2,268.4	0.00	0.00	0.00	
10,900.0	90.28	271.70	7,078.1	-1,701.7	-2,121.9	2,366.6	0.00	0.00	0.00	
11,000.0	90.28	271.70	7,077.6	-1,698.7	-2,221.8	2,464.8	0.00	0.00	0.00	
11,100.0	90.28	271.70	7,077.1	-1,695.8	-2,321.8	2,563.0	0.00	0.00	0.00	
11,200.0	90.28	271.70	7,076.6	-1,692.8	-2,421.7	2,661.2	0.00	0.00	0.00	
11,300.0	90.28	271.70	7,076.1	-1,689.8	-2,521.7	2,759.4	0.00	0.00	0.00	
11,400.0	90.28	271.70	7,075.7	-1,686.8	-2,621.7	2,857.6	0.00	0.00	0.00	
11,500.0	90.28	271.70	7,075.2	-1,683.9	-2,721.6	2,955.8	0.00	0.00	0.00	
11,600.0	90.28	271.70	7,074.7	-1,680.9	-2,821.6	3,053.9	0.00	0.00	0.00	
11,700.0	90.28	271.70	7,074.2	-1,677.9	-2,921.5	3,152.1	0.00	0.00	0.00	
11,800.0	90.28	271.70	7,073.7	-1,675.0	-3,021.5	3,250.3	0.00	0.00	0.00	
11,900.0	90.28	271.70	7,073.2	-1,672.0	-3,121.4	3,348.5	0.00	0.00	0.00	
12,000.0	90.28	271.70	7,072.7	-1,669.0	-3,221.4	3,446.7	0.00	0.00	0.00	
12,100.0	90.28	271.70	7,072.2	-1,666.0	-3,321.3	3,544.9	0.00	0.00	0.00	
12,200.0	90.28	271.70	7,071.8	-1,663.1	-3,421.3	3,643.1	0.00	0.00	0.00	
12,300.0	90.28	271.70	7,071.3	-1,660.1	-3,521.2	3,741.3	0.00	0.00	0.00	
12,400.0	90.28	271.70	7,070.8	-1,657.1	-3,621.2	3,839.5	0.00	0.00	0.00	
12,500.0	90.28	271.70	7,070.3	-1,654.1	-3,721.2	3,937.7	0.00	0.00	0.00	
12,600.0	90.28	271.70	7,069.8	-1,651.2	-3,821.1	4,035.9	0.00	0.00	0.00	
12,700.0	90.28	271.70	7,069.3	-1,648.2	-3,921.1	4,134.1	0.00	0.00	0.00	
12,800.0	90.28	271.70	7,068.8	-1,645.2	-4,021.0	4,232.3	0.00	0.00	0.00	
12,900.0	90.28	271.70	7,068.3	-1,642.3	-4,121.0	4,330.5	0.00	0.00	0.00	
13,000.0	90.28	271.70	7,067.9	-1,639.3	-4,220.9	4,428.7	0.00	0.00	0.00	
13,100.0	90.28	271.70	7,067.4	-1,636.3	-4,320.9	4,526.9	0.00	0.00	0.00	
13,142.1	90.28	271.70	7,067.2	-1,635.1	-4,363.0	4,568.2	0.00	0.00	0.00	
13,176.5	90.28	271.02	7,067.0	-1,634.2	-4,397.3	4,602.0	2.00	0.00	-2.00	
GF U-34-33HN VP										
13,200.0	90.28	271.02	7,066.9	-1,633.8	-4,420.9	4,625.2	0.00	0.00	0.00	
13,300.0	90.28	271.02	7,066.4	-1,632.1	-4,520.8	4,723.6	0.00	0.00	0.00	
13,400.0	90.28	271.02	7,065.9	-1,630.3	-4,620.8	4,822.0	0.00	0.00	0.00	
13,500.0	90.28	271.02	7,065.4	-1,628.5	-4,720.8	4,920.4	0.00	0.00	0.00	
13,600.0	90.28	271.02	7,064.9	-1,626.7	-4,820.8	5,018.8	0.00	0.00	0.00	
13,700.0	90.28	271.02	7,064.5	-1,625.0	-4,920.8	5,117.2	0.00	0.00	0.00	
13,800.0	90.28	271.02	7,064.0	-1,623.2	-5,020.7	5,215.6	0.00	0.00	0.00	
13,900.0	90.28	271.02	7,063.5	-1,621.4	-5,120.7	5,314.1	0.00	0.00	0.00	
14,000.0	90.28	271.02	7,063.0	-1,619.6	-5,220.7	5,412.5	0.00	0.00	0.00	
14,100.0	90.28	271.02	7,062.5	-1,617.9	-5,320.7	5,510.9	0.00	0.00	0.00	
14,200.0	90.28	271.02	7,062.0	-1,616.1	-5,420.7	5,609.3	0.00	0.00	0.00	
14,300.0	90.28	271.02	7,061.5	-1,614.3	-5,520.7	5,707.7	0.00	0.00	0.00	
14,400.0	90.28	271.02	7,061.0	-1,612.5	-5,620.6	5,806.1	0.00	0.00	0.00	
14,500.0	90.28	271.02	7,060.6	-1,610.8	-5,720.6	5,904.5	0.00	0.00	0.00	
14,600.0	90.28	271.02	7,060.1	-1,609.0	-5,820.6	6,003.0	0.00	0.00	0.00	
14,700.0	90.28	271.02	7,059.6	-1,607.2	-5,920.6	6,101.4	0.00	0.00	0.00	
14,800.0	90.28	271.02	7,059.1	-1,605.5	-6,020.6	6,199.8	0.00	0.00	0.00	
14,900.0	90.28	271.02	7,058.6	-1,603.7	-6,120.6	6,298.2	0.00	0.00	0.00	
15,000.0	90.28	271.02	7,058.1	-1,601.9	-6,220.5	6,396.6	0.00	0.00	0.00	



Database:	EDM	Local Co-ordinate Reference:	Well GROVES FARM U-34-33HN
Company:	Bayswater Exploration & Production, LLC	TVD Reference:	KB @ 4867.0usft (Original Well Elev)
Project:	DJ Basin	MD Reference:	KB @ 4867.0usft (Original Well Elev)
Site:	Groves Farm 34-L Pad	North Reference:	True
Well:	GROVES FARM U-34-33HN	Survey Calculation Method:	Minimum Curvature
Wellbore:	Wellbore #1		
Design:	Design #1		

Planned Survey										
Measured Depth (usft)	Inclination (°)	Azimuth (°)	Vertical Depth (usft)	+N/-S (usft)	+E/-W (usft)	Vertical Section (usft)	Dogleg Rate (°/100usft)	Build Rate (°/100usft)	Turn Rate (°/100usft)	
15,100.0	90.28	271.02	7,057.6	-1,600.1	-6,320.5	6,495.0	0.00	0.00	0.00	
15,200.0	90.28	271.02	7,057.1	-1,598.4	-6,420.5	6,593.4	0.00	0.00	0.00	
15,300.0	90.28	271.02	7,056.7	-1,596.6	-6,520.5	6,691.9	0.00	0.00	0.00	
15,400.0	90.28	271.02	7,056.2	-1,594.8	-6,620.5	6,790.3	0.00	0.00	0.00	
15,500.0	90.28	271.02	7,055.7	-1,593.0	-6,720.5	6,888.7	0.00	0.00	0.00	
15,600.0	90.28	271.02	7,055.2	-1,591.3	-6,820.4	6,987.1	0.00	0.00	0.00	
15,700.0	90.28	271.02	7,054.7	-1,589.5	-6,920.4	7,085.5	0.00	0.00	0.00	
15,800.0	90.28	271.02	7,054.2	-1,587.7	-7,020.4	7,183.9	0.00	0.00	0.00	
15,900.0	90.28	271.02	7,053.7	-1,585.9	-7,120.4	7,282.3	0.00	0.00	0.00	
16,000.0	90.28	271.02	7,053.3	-1,584.2	-7,220.4	7,380.8	0.00	0.00	0.00	
16,100.0	90.28	271.02	7,052.8	-1,582.4	-7,320.4	7,479.2	0.00	0.00	0.00	
16,200.0	90.28	271.02	7,052.3	-1,580.6	-7,420.3	7,577.6	0.00	0.00	0.00	
16,300.0	90.28	271.02	7,051.8	-1,578.8	-7,520.3	7,676.0	0.00	0.00	0.00	
16,400.0	90.28	271.02	7,051.3	-1,577.1	-7,620.3	7,774.4	0.00	0.00	0.00	
16,500.0	90.28	271.02	7,050.8	-1,575.3	-7,720.3	7,872.8	0.00	0.00	0.00	
16,600.0	90.28	271.02	7,050.3	-1,573.5	-7,820.3	7,971.2	0.00	0.00	0.00	
16,700.0	90.28	271.02	7,049.8	-1,571.8	-7,920.3	8,069.7	0.00	0.00	0.00	
16,800.0	90.28	271.02	7,049.4	-1,570.0	-8,020.2	8,168.1	0.00	0.00	0.00	
16,900.0	90.28	271.02	7,048.9	-1,568.2	-8,120.2	8,266.5	0.00	0.00	0.00	
17,000.0	90.28	271.02	7,048.4	-1,566.4	-8,220.2	8,364.9	0.00	0.00	0.00	
17,100.0	90.28	271.02	7,047.9	-1,564.7	-8,320.2	8,463.3	0.00	0.00	0.00	
17,200.0	90.28	271.02	7,047.4	-1,562.9	-8,420.2	8,561.7	0.00	0.00	0.00	
17,300.0	90.28	271.02	7,046.9	-1,561.1	-8,520.2	8,660.1	0.00	0.00	0.00	
17,400.0	90.28	271.02	7,046.4	-1,559.3	-8,620.1	8,758.6	0.00	0.00	0.00	
17,500.0	90.28	271.02	7,045.9	-1,557.6	-8,720.1	8,857.0	0.00	0.00	0.00	
17,600.0	90.28	271.02	7,045.5	-1,555.8	-8,820.1	8,955.4	0.00	0.00	0.00	
17,700.0	90.28	271.02	7,045.0	-1,554.0	-8,920.1	9,053.8	0.00	0.00	0.00	
17,800.0	90.28	271.02	7,044.5	-1,552.2	-9,020.1	9,152.2	0.00	0.00	0.00	
17,900.0	90.28	271.02	7,044.0	-1,550.5	-9,120.1	9,250.6	0.00	0.00	0.00	
18,000.0	90.28	271.02	7,043.5	-1,548.7	-9,220.0	9,349.0	0.00	0.00	0.00	
18,100.0	90.28	271.02	7,043.0	-1,546.9	-9,320.0	9,447.5	0.00	0.00	0.00	
18,200.0	90.28	271.02	7,042.5	-1,545.1	-9,420.0	9,545.9	0.00	0.00	0.00	
18,300.0	90.28	271.02	7,042.1	-1,543.4	-9,520.0	9,644.3	0.00	0.00	0.00	
18,311.0	90.28	271.02	7,042.0	-1,543.2	-9,531.0	9,655.1	0.00	0.00	0.00	
GF U-34-33HN PBHL										

Design Targets										
Target Name	Dip Angle (°)	Dip Dir. (°)	TVD (usft)	+N/-S (usft)	+E/-W (usft)	Northing (usft)	Easting (usft)	Latitude		Longitude
GF U-34-33HN PBHL - hit/miss target - Shape - Point	0.00	0.00	7,042.0	-1,543.2	-9,531.0	1,435,430.70	3,228,724.15	40° 31' 32.682 N		104° 40' 37.996 W
GF U-34-33HN VP - plan hits target center - Point	0.00	0.00	7,067.0	-1,634.2	-4,397.3	1,435,389.25	3,233,858.48	40° 31' 31.796 N		104° 39' 31.514 W
GF U-34-33HN LP - plan hits target center - Point	0.00	0.00	7,092.0	-1,786.5	733.6	1,435,286.55	3,238,990.67	40° 31' 30.295 N		104° 38' 25.069 W



Database:	EDM	Local Co-ordinate Reference:	Well GROVES FARM U-34-33HN
Company:	Bayswater Exploration & Production, LLC	TVD Reference:	KB @ 4867.0usft (Original Well Elev)
Project:	DJ Basin	MD Reference:	KB @ 4867.0usft (Original Well Elev)
Site:	Groves Farm 34-L Pad	North Reference:	True
Well:	GROVES FARM U-34-33HN	Survey Calculation Method:	Minimum Curvature
Wellbore:	Wellbore #1		
Design:	Design #1		