

## SECTION DETAILS

Sec	MD	Inc	Azi	TVD	+N/-S	+E/-W	Dleg	TFace	VSect	Target
1	0.0	0.00	0.00	0.0	0.0	0.0	0.00	0.00	0.0	
2	1500.0	0.00	0.00	1500.0	0.0	0.0	0.00	0.00	0.0	
3	3240.6	34.81	140.27	3135.5	-394.3	327.7	2.00	140.27	-269.8	
4	5034.8	34.81	140.27	4608.6	-1182.0	982.5	0.00	0.00	-808.8	
5	6775.4	0.00	271.70	6244.1	-1576.3	1310.2	2.00	180.00	-1078.6	
6	6975.4	0.00	271.70	6444.1	-1576.3	1310.2	0.00	0.00	-1078.6	
7	7879.6	90.41	271.70	7017.0	-1559.2	733.3	10.00	0.00	-509.7	GF T-34-33HN LP
8	7879.8	90.41	271.70	7017.0	-1559.2	733.3	2.00	90.72	-509.5	
9	12969.1	90.41	271.70	6980.3	-1407.9	-4353.8	0.00	0.00	4507.1	
10	13014.8	90.42	270.79	6980.0	-1406.9	-4399.5	2.00	-89.28	4552.2	GF T-34-33HN VP
11	18146.3	90.42	270.79	6942.0	-1336.3	-9530.4	0.00	0.00	9623.6	GF T-34-33HN PBHL

## DESIGN TARGET DETAILS

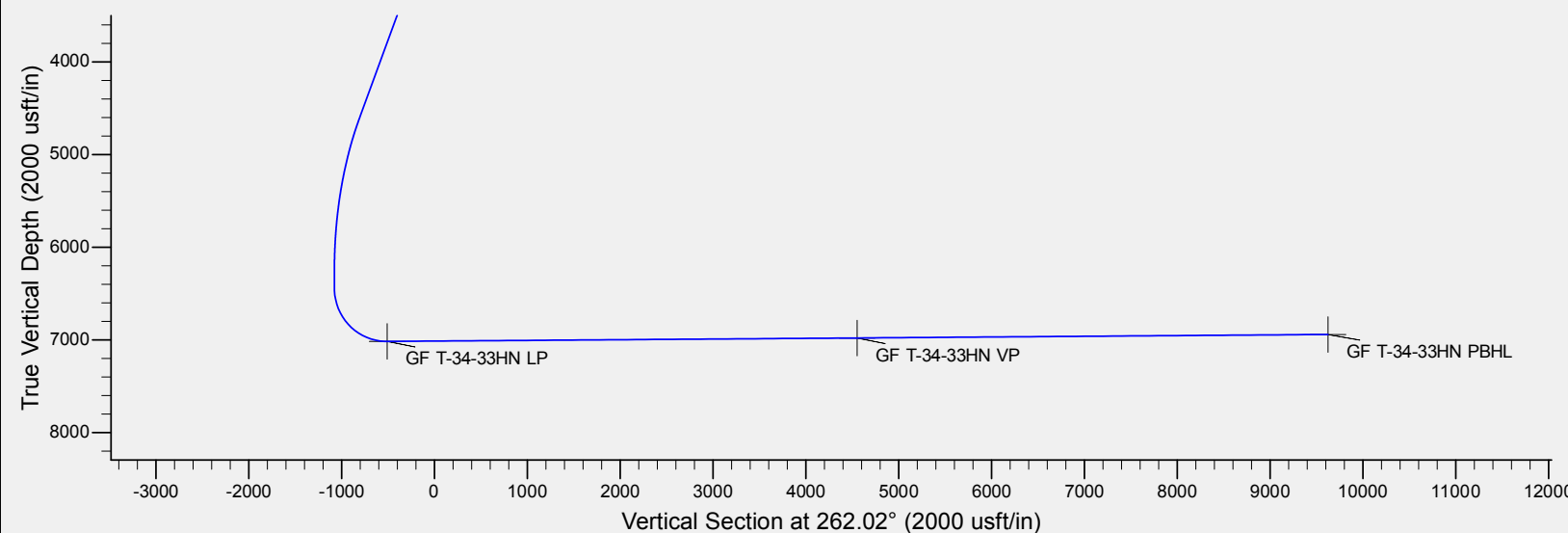
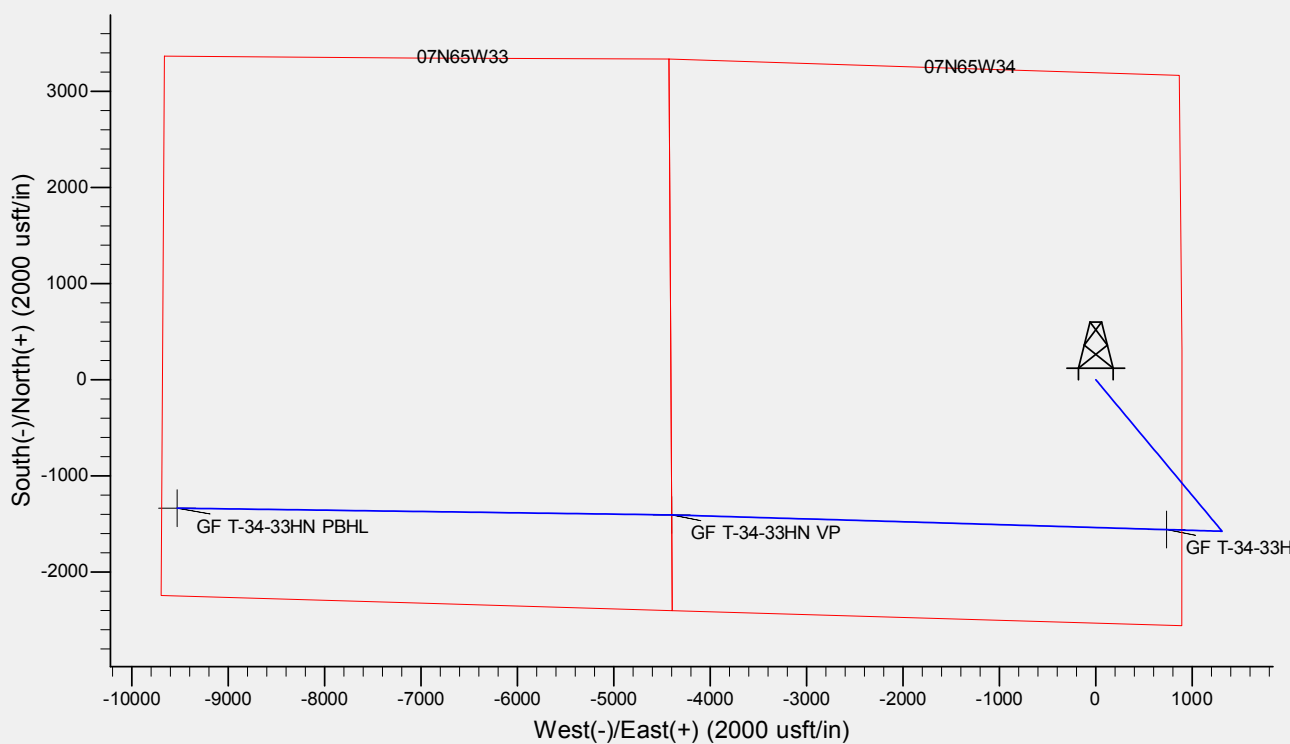
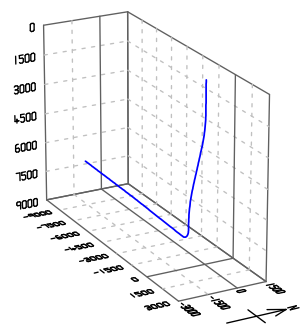
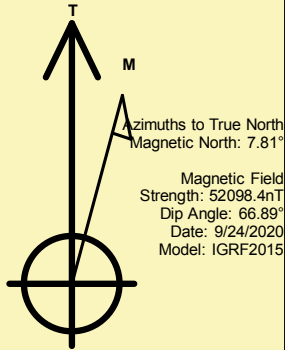
Name	TVD	+N/-S	+E/-W	Northing	Easting	Latitude	Longitude	Shape
GF T-34-33HN LP	7017.0	-1559.2	733.3	1435528.81	3238988.60	40° 31' 32.689 N	104° 38' 25.066 W	Point
GF T-34-33HN VP	- plan hits target center 6980.0	-1406.9	-4399.5	1435631.49	3233854.51	40° 31' 34.190 N	104° 39' 31.536 W	Point
GF T-34-33HN PBHL	- plan hits target center 6942.0	-1336.3	-9530.4	1435652.56	3228723.20	40° 31' 34.874 N	104° 40' 37.981 W	Point

## REFERENCE INFORMATION

Co-ordinate (N/E) Reference: Well GROVES FARM T-34-33HN, True North  
Vertical (TVD) Reference: KB @ 4867.0usft (Original Well Elev)  
Section (VS) Reference: Slot - (0.0N, 0.0E)  
Measured Depth Reference: KB @ 4867.0usft (Original Well Elev)  
Calculation Method: Minimum Curvature

## CASING DETAILS

No casing data is available





**BAYSWATER**

# **Bayswater Exploration & Production, LLC**

**DJ Basin**

**Groves Farm 34-L Pad**

**GROVES FARM T-34-33HN**

**Wellbore #1**

**Plan: Design #1**

## **Standard Planning Report**

**26 September, 2020**



<b>Database:</b>	EDM	<b>Local Co-ordinate Reference:</b>	Well GROVES FARM T-34-33HN
<b>Company:</b>	Bayswater Exploration & Production, LLC	<b>TVD Reference:</b>	KB @ 4867.0usft (Original Well Elev)
<b>Project:</b>	DJ Basin	<b>MD Reference:</b>	KB @ 4867.0usft (Original Well Elev)
<b>Site:</b>	Groves Farm 34-L Pad	<b>North Reference:</b>	True
<b>Well:</b>	GROVES FARM T-34-33HN	<b>Survey Calculation Method:</b>	Minimum Curvature
<b>Wellbore:</b>	Wellbore #1		
<b>Design:</b>	Design #1		

<b>Project</b>	DJ Basin, DJ Basin		
<b>Map System:</b>	US State Plane 1983	<b>System Datum:</b>	Mean Sea Level
<b>Geo Datum:</b>	North American Datum 1983		
<b>Map Zone:</b>	Colorado Northern Zone		

Site		Groves Farm 34-L Pad			
Site Position:		Northing:	1,437,185.82 usft	Latitude:	40° 31' 49.134 N
From:	Lat/Long	Easting:	3,238,241.98 usft	Longitude:	104° 38' 34.526 W
Position Uncertainty:	0.0 usft	Slot Radius:	13-3/16 "	Grid Convergence:	0.55 °

Well	GROVES FARM T-34-33HN					
Well Position	+N/-S	-104.9 usft	Northing:	1,437,080.87 usft	Latitude:	40° 31' 48.097 N
	+E/-W	-2.8 usft	Easting:	3,238,240.21 usft	Longitude:	104° 38' 34.562 W
Position Uncertainty		0.0 usft	Wellhead Elevation:		Ground Level:	4,844.0 usft

<b>Wellbore</b>	Wellbore #1				
<b>Magnetics</b>	<b>Model Name</b>	<b>Sample Date</b>	<b>Declination (°)</b>	<b>Dip Angle (°)</b>	<b>Field Strength (nT)</b>
	IGRF2015	9/24/2020	7.81	66.89	52,098.35294289

<b>Design</b>	Design #1				
<b>Audit Notes:</b>					
<b>Version:</b>		<b>Phase:</b>	PLAN	<b>Tie On Depth:</b>	0.0
<b>Vertical Section:</b>	<b>Depth From (TVD) (usft)</b>	<b>+N/-S (usft)</b>	<b>+E/-W (usft)</b>	<b>Direction (°)</b>	
	0.0	0.0	0.0	262.02	

<b>Plan Survey Tool Program</b>	<b>Date</b>	9/24/2020			
<b>Depth From (usft)</b>	<b>Depth To (usft)</b>	<b>Survey (Wellbore)</b>	<b>Tool Name</b>	<b>Remarks</b>	
1	0.0	18,146.3	Design #1 (Wellbore #1)	MWD	
				OWSG MWD - Standard	



<b>Database:</b>	EDM	<b>Local Co-ordinate Reference:</b>	Well GROVES FARM T-34-33HN
<b>Company:</b>	Bayswater Exploration & Production, LLC	<b>TVD Reference:</b>	KB @ 4867.0usft (Original Well Elev)
<b>Project:</b>	DJ Basin	<b>MD Reference:</b>	KB @ 4867.0usft (Original Well Elev)
<b>Site:</b>	Groves Farm 34-L Pad	<b>North Reference:</b>	True
<b>Well:</b>	GROVES FARM T-34-33HN	<b>Survey Calculation Method:</b>	Minimum Curvature
<b>Wellbore:</b>	Wellbore #1		
<b>Design:</b>	Design #1		

Plan Sections										
Measured Depth (usft)	Inclination (°)	Azimuth (°)	Vertical Depth (usft)	+N/-S (usft)	+E/-W (usft)	Dogleg Rate (°/100usft)	Build Rate (°/100usft)	Turn Rate (°/100usft)	TFO (°)	Target
0.0	0.00	0.00	0.0	0.0	0.0	0.00	0.00	0.00	0.00	
1,500.0	0.00	0.00	1,500.0	0.0	0.0	0.00	0.00	0.00	0.00	
3,240.6	34.81	140.27	3,135.5	-394.3	327.7	2.00	2.00	0.00	140.27	
5,034.8	34.81	140.27	4,608.6	-1,182.0	982.5	0.00	0.00	0.00	0.00	
6,775.4	0.00	271.70	6,244.1	-1,576.3	1,310.2	2.00	-2.00	0.00	180.00	
6,975.4	0.00	271.70	6,444.1	-1,576.3	1,310.2	0.00	0.00	0.00	0.00	
7,879.6	90.41	271.70	7,017.0	-1,559.2	733.3	10.00	10.00	0.00	0.00	GF T-34-33HN LP
7,879.8	90.41	271.70	7,017.0	-1,559.2	733.1	2.00	-0.03	2.00	90.72	
12,969.1	90.41	271.70	6,980.3	-1,407.9	-4,353.8	0.00	0.00	0.00	0.00	
13,014.8	90.42	270.79	6,980.0	-1,406.9	-4,399.5	2.00	0.03	-2.00	-89.28	GF T-34-33HN VP
18,146.3	90.42	270.79	6,942.0	-1,336.3	-9,530.4	0.00	0.00	0.00	0.00	GF T-34-33HN PBHL



<b>Database:</b>	EDM	<b>Local Co-ordinate Reference:</b>	Well GROVES FARM T-34-33HN
<b>Company:</b>	Bayswater Exploration & Production, LLC	<b>TVD Reference:</b>	KB @ 4867.0usft (Original Well Elev)
<b>Project:</b>	DJ Basin	<b>MD Reference:</b>	KB @ 4867.0usft (Original Well Elev)
<b>Site:</b>	Groves Farm 34-L Pad	<b>North Reference:</b>	True
<b>Well:</b>	GROVES FARM T-34-33HN	<b>Survey Calculation Method:</b>	Minimum Curvature
<b>Wellbore:</b>	Wellbore #1		
<b>Design:</b>	Design #1		

Planned Survey									
Measured Depth (usft)	Inclination (°)	Azimuth (°)	Vertical Depth (usft)	+N/-S (usft)	+E/-W (usft)	Vertical Section (usft)	Dogleg Rate (°/100usft)	Build Rate (°/100usft)	Turn Rate (°/100usft)
0.0	0.00	0.00	0.0	0.0	0.0	0.0	0.00	0.00	0.00
100.0	0.00	0.00	100.0	0.0	0.0	0.0	0.00	0.00	0.00
200.0	0.00	0.00	200.0	0.0	0.0	0.0	0.00	0.00	0.00
300.0	0.00	0.00	300.0	0.0	0.0	0.0	0.00	0.00	0.00
400.0	0.00	0.00	400.0	0.0	0.0	0.0	0.00	0.00	0.00
500.0	0.00	0.00	500.0	0.0	0.0	0.0	0.00	0.00	0.00
600.0	0.00	0.00	600.0	0.0	0.0	0.0	0.00	0.00	0.00
700.0	0.00	0.00	700.0	0.0	0.0	0.0	0.00	0.00	0.00
800.0	0.00	0.00	800.0	0.0	0.0	0.0	0.00	0.00	0.00
900.0	0.00	0.00	900.0	0.0	0.0	0.0	0.00	0.00	0.00
1,000.0	0.00	0.00	1,000.0	0.0	0.0	0.0	0.00	0.00	0.00
1,100.0	0.00	0.00	1,100.0	0.0	0.0	0.0	0.00	0.00	0.00
1,200.0	0.00	0.00	1,200.0	0.0	0.0	0.0	0.00	0.00	0.00
1,300.0	0.00	0.00	1,300.0	0.0	0.0	0.0	0.00	0.00	0.00
1,400.0	0.00	0.00	1,400.0	0.0	0.0	0.0	0.00	0.00	0.00
1,500.0	0.00	0.00	1,500.0	0.0	0.0	0.0	0.00	0.00	0.00
1,600.0	2.00	140.27	1,600.0	-1.3	1.1	-0.9	2.00	2.00	0.00
1,700.0	4.00	140.27	1,699.8	-5.4	4.5	-3.7	2.00	2.00	0.00
1,800.0	6.00	140.27	1,799.5	-12.1	10.0	-8.3	2.00	2.00	0.00
1,900.0	8.00	140.27	1,898.7	-21.4	17.8	-14.7	2.00	2.00	0.00
2,000.0	10.00	140.27	1,997.5	-33.5	27.8	-22.9	2.00	2.00	0.00
2,100.0	12.00	140.27	2,095.6	-48.1	40.0	-32.9	2.00	2.00	0.00
2,200.0	14.00	140.27	2,193.1	-65.4	54.4	-44.8	2.00	2.00	0.00
2,300.0	16.00	140.27	2,289.6	-85.3	70.9	-58.4	2.00	2.00	0.00
2,400.0	18.00	140.27	2,385.3	-107.8	89.6	-73.8	2.00	2.00	0.00
2,500.0	20.00	140.27	2,479.8	-132.9	110.4	-90.9	2.00	2.00	0.00
2,600.0	22.00	140.27	2,573.2	-160.4	133.3	-109.8	2.00	2.00	0.00
2,700.0	24.00	140.27	2,665.2	-190.5	158.3	-130.3	2.00	2.00	0.00
2,800.0	26.00	140.27	2,755.8	-223.0	185.3	-152.6	2.00	2.00	0.00
2,900.0	28.00	140.27	2,844.9	-257.9	214.3	-176.5	2.00	2.00	0.00
3,000.0	30.00	140.27	2,932.4	-295.2	245.3	-202.0	2.00	2.00	0.00
3,100.0	32.00	140.27	3,018.1	-334.8	278.2	-229.1	2.00	2.00	0.00
3,200.0	34.00	140.27	3,102.0	-376.7	313.1	-257.7	2.00	2.00	0.00
3,240.6	34.81	140.27	3,135.5	-394.3	327.7	-269.8	2.00	2.00	0.00
3,300.0	34.81	140.27	3,184.2	-420.4	349.4	-287.6	0.00	0.00	0.00
3,400.0	34.81	140.27	3,266.3	-464.3	385.9	-317.7	0.00	0.00	0.00
3,500.0	34.81	140.27	3,348.4	-508.2	422.4	-347.7	0.00	0.00	0.00
3,600.0	34.81	140.27	3,430.5	-552.1	458.9	-377.8	0.00	0.00	0.00
3,700.0	34.81	140.27	3,512.6	-596.0	495.4	-407.8	0.00	0.00	0.00
3,800.0	34.81	140.27	3,594.8	-639.9	531.9	-437.9	0.00	0.00	0.00
3,900.0	34.81	140.27	3,676.9	-683.8	568.3	-467.9	0.00	0.00	0.00
4,000.0	34.81	140.27	3,759.0	-727.7	604.8	-497.9	0.00	0.00	0.00
4,100.0	34.81	140.27	3,841.1	-771.6	641.3	-528.0	0.00	0.00	0.00
4,200.0	34.81	140.27	3,923.2	-815.5	677.8	-558.0	0.00	0.00	0.00
4,300.0	34.81	140.27	4,005.3	-859.4	714.3	-588.1	0.00	0.00	0.00
4,400.0	34.81	140.27	4,087.4	-903.3	750.8	-618.1	0.00	0.00	0.00
4,500.0	34.81	140.27	4,169.5	-947.2	787.3	-648.1	0.00	0.00	0.00
4,600.0	34.81	140.27	4,251.6	-991.1	823.8	-678.2	0.00	0.00	0.00
4,700.0	34.81	140.27	4,333.7	-1,035.0	860.3	-708.2	0.00	0.00	0.00
4,800.0	34.81	140.27	4,415.8	-1,078.9	896.8	-738.3	0.00	0.00	0.00
4,900.0	34.81	140.27	4,497.9	-1,122.8	933.3	-768.3	0.00	0.00	0.00
5,000.0	34.81	140.27	4,580.0	-1,166.7	969.7	-798.3	0.00	0.00	0.00
5,034.8	34.81	140.27	4,608.6	-1,182.0	982.5	-808.8	0.00	0.00	0.00
5,100.0	33.51	140.27	4,662.5	-1,210.2	1,005.8	-828.1	2.00	-2.00	0.00



<b>Database:</b>	EDM	<b>Local Co-ordinate Reference:</b>	Well GROVES FARM T-34-33HN
<b>Company:</b>	Bayswater Exploration & Production, LLC	<b>TVD Reference:</b>	KB @ 4867.0usft (Original Well Elev)
<b>Project:</b>	DJ Basin	<b>MD Reference:</b>	KB @ 4867.0usft (Original Well Elev)
<b>Site:</b>	Groves Farm 34-L Pad	<b>North Reference:</b>	True
<b>Well:</b>	GROVES FARM T-34-33HN	<b>Survey Calculation Method:</b>	Minimum Curvature
<b>Wellbore:</b>	Wellbore #1		
<b>Design:</b>	Design #1		

Planned Survey									
Measured Depth (usft)	Inclination (°)	Azimuth (°)	Vertical Depth (usft)	+N/-S (usft)	+E/-W (usft)	Vertical Section (usft)	Dogleg Rate (°/100usft)	Build Rate (°/100usft)	Turn Rate (°/100usft)
5,200.0	31.51	140.27	4,746.8	-1,251.5	1,040.2	-856.3	2.00	-2.00	0.00
5,300.0	29.51	140.27	4,833.0	-1,290.5	1,072.6	-883.1	2.00	-2.00	0.00
5,400.0	27.51	140.27	4,920.9	-1,327.2	1,103.1	-908.2	2.00	-2.00	0.00
5,500.0	25.51	140.27	5,010.3	-1,361.6	1,131.7	-931.7	2.00	-2.00	0.00
5,600.0	23.51	140.27	5,101.3	-1,393.5	1,158.2	-953.5	2.00	-2.00	0.00
5,700.0	21.51	140.27	5,193.7	-1,422.9	1,182.7	-973.6	2.00	-2.00	0.00
5,800.0	19.51	140.27	5,287.4	-1,449.9	1,205.1	-992.1	2.00	-2.00	0.00
5,900.0	17.51	140.27	5,382.2	-1,474.3	1,225.3	-1,008.8	2.00	-2.00	0.00
6,000.0	15.51	140.27	5,478.1	-1,496.1	1,243.5	-1,023.7	2.00	-2.00	0.00
6,100.0	13.51	140.27	5,574.9	-1,515.4	1,259.5	-1,036.9	2.00	-2.00	0.00
6,200.0	11.51	140.27	5,672.5	-1,532.0	1,273.4	-1,048.3	2.00	-2.00	0.00
6,300.0	9.51	140.27	5,770.8	-1,546.1	1,285.0	-1,057.9	2.00	-2.00	0.00
6,400.0	7.51	140.27	5,869.7	-1,557.4	1,294.5	-1,065.7	2.00	-2.00	0.00
6,500.0	5.51	140.27	5,969.0	-1,566.2	1,301.7	-1,071.6	2.00	-2.00	0.00
6,600.0	3.51	140.27	6,068.7	-1,572.2	1,306.7	-1,075.8	2.00	-2.00	0.00
6,700.0	1.51	140.27	6,168.6	-1,575.6	1,309.5	-1,078.1	2.00	-2.00	0.00
6,775.4	0.00	271.70	6,244.1	-1,576.3	1,310.2	-1,078.6	2.00	-2.00	0.00
6,800.0	0.00	0.00	6,268.6	-1,576.3	1,310.2	-1,078.6	0.00	0.00	0.00
6,900.0	0.00	0.00	6,368.6	-1,576.3	1,310.2	-1,078.6	0.00	0.00	0.00
6,975.4	0.00	271.70	6,444.1	-1,576.3	1,310.2	-1,078.6	0.00	0.00	0.00
7,000.0	2.46	271.70	6,468.6	-1,576.3	1,309.7	-1,078.1	10.00	10.00	0.00
7,100.0	12.46	271.70	6,567.6	-1,575.9	1,296.7	-1,065.3	10.00	10.00	0.00
7,200.0	22.46	271.70	6,662.9	-1,575.0	1,266.8	-1,035.8	10.00	10.00	0.00
7,300.0	32.46	271.70	6,751.5	-1,573.7	1,220.7	-990.4	10.00	10.00	0.00
7,400.0	42.46	271.70	6,830.8	-1,571.9	1,160.0	-930.5	10.00	10.00	0.00
7,500.0	52.46	271.70	6,898.3	-1,569.7	1,086.5	-858.0	10.00	10.00	0.00
7,600.0	62.46	271.70	6,952.1	-1,567.2	1,002.3	-775.0	10.00	10.00	0.00
7,700.0	72.46	271.70	6,990.4	-1,564.5	910.1	-684.1	10.00	10.00	0.00
7,800.0	82.46	271.70	7,012.1	-1,561.6	812.7	-588.0	10.00	10.00	0.00
7,879.6	90.41	271.70	7,017.0	-1,559.2	733.3	-509.7	10.00	10.00	0.00
GF T-34-33HN LP									
7,879.8	90.41	271.70	7,017.0	-1,559.2	733.1	-509.5	2.00	-0.03	2.00
7,900.0	90.41	271.70	7,016.9	-1,558.6	712.9	-489.6	0.00	0.00	0.00
8,000.0	90.41	271.70	7,016.1	-1,555.6	613.0	-391.0	0.00	0.00	0.00
8,100.0	90.41	271.70	7,015.4	-1,552.7	513.0	-292.5	0.00	0.00	0.00
8,200.0	90.41	271.70	7,014.7	-1,549.7	413.1	-193.9	0.00	0.00	0.00
8,300.0	90.41	271.70	7,014.0	-1,546.7	313.1	-95.3	0.00	0.00	0.00
8,400.0	90.41	271.70	7,013.3	-1,543.7	213.2	3.3	0.00	0.00	0.00
8,500.0	90.41	271.70	7,012.5	-1,540.8	113.2	101.8	0.00	0.00	0.00
8,600.0	90.41	271.70	7,011.8	-1,537.8	13.3	200.4	0.00	0.00	0.00
8,700.0	90.41	271.70	7,011.1	-1,534.8	-86.7	299.0	0.00	0.00	0.00
8,800.0	90.41	271.70	7,010.4	-1,531.9	-186.7	397.5	0.00	0.00	0.00
8,900.0	90.41	271.70	7,009.6	-1,528.9	-286.6	496.1	0.00	0.00	0.00
9,000.0	90.41	271.70	7,008.9	-1,525.9	-386.6	594.7	0.00	0.00	0.00
9,100.0	90.41	271.70	7,008.2	-1,522.9	-486.5	693.3	0.00	0.00	0.00
9,200.0	90.41	271.70	7,007.5	-1,520.0	-586.5	791.8	0.00	0.00	0.00
9,300.0	90.41	271.70	7,006.8	-1,517.0	-686.4	890.4	0.00	0.00	0.00
9,400.0	90.41	271.70	7,006.0	-1,514.0	-786.4	989.0	0.00	0.00	0.00
9,500.0	90.41	271.70	7,005.3	-1,511.0	-886.3	1,087.6	0.00	0.00	0.00
9,600.0	90.41	271.70	7,004.6	-1,508.1	-986.3	1,186.1	0.00	0.00	0.00
9,700.0	90.41	271.70	7,003.9	-1,505.1	-1,086.2	1,284.7	0.00	0.00	0.00
9,800.0	90.41	271.70	7,003.2	-1,502.1	-1,186.2	1,383.3	0.00	0.00	0.00
9,900.0	90.41	271.70	7,002.4	-1,499.2	-1,286.1	1,481.8	0.00	0.00	0.00



<b>Database:</b>	EDM	<b>Local Co-ordinate Reference:</b>	Well GROVES FARM T-34-33HN
<b>Company:</b>	Bayswater Exploration & Production, LLC	<b>TVD Reference:</b>	KB @ 4867.0usft (Original Well Elev)
<b>Project:</b>	DJ Basin	<b>MD Reference:</b>	KB @ 4867.0usft (Original Well Elev)
<b>Site:</b>	Groves Farm 34-L Pad	<b>North Reference:</b>	True
<b>Well:</b>	GROVES FARM T-34-33HN	<b>Survey Calculation Method:</b>	Minimum Curvature
<b>Wellbore:</b>	Wellbore #1		
<b>Design:</b>	Design #1		

Planned Survey									
Measured Depth (usft)	Inclination (°)	Azimuth (°)	Vertical Depth (usft)	+N/-S (usft)	+E/-W (usft)	Vertical Section (usft)	Dogleg Rate (°/100usft)	Build Rate (°/100usft)	Turn Rate (°/100usft)
10,000.0	90.41	271.70	7,001.7	-1,496.2	-1,386.1	1,580.4	0.00	0.00	0.00
10,100.0	90.41	271.70	7,001.0	-1,493.2	-1,486.0	1,679.0	0.00	0.00	0.00
10,200.0	90.41	271.70	7,000.3	-1,490.2	-1,586.0	1,777.6	0.00	0.00	0.00
10,300.0	90.41	271.70	6,999.6	-1,487.3	-1,686.0	1,876.1	0.00	0.00	0.00
10,400.0	90.41	271.70	6,998.8	-1,484.3	-1,785.9	1,974.7	0.00	0.00	0.00
10,500.0	90.41	271.70	6,998.1	-1,481.3	-1,885.9	2,073.3	0.00	0.00	0.00
10,600.0	90.41	271.70	6,997.4	-1,478.3	-1,985.8	2,171.8	0.00	0.00	0.00
10,700.0	90.41	271.70	6,996.7	-1,475.4	-2,085.8	2,270.4	0.00	0.00	0.00
10,800.0	90.41	271.70	6,996.0	-1,472.4	-2,185.7	2,369.0	0.00	0.00	0.00
10,900.0	90.41	271.70	6,995.2	-1,469.4	-2,285.7	2,467.6	0.00	0.00	0.00
11,000.0	90.41	271.70	6,994.5	-1,466.5	-2,385.6	2,566.1	0.00	0.00	0.00
11,100.0	90.41	271.70	6,993.8	-1,463.5	-2,485.6	2,664.7	0.00	0.00	0.00
11,200.0	90.41	271.70	6,993.1	-1,460.5	-2,585.5	2,763.3	0.00	0.00	0.00
11,300.0	90.41	271.70	6,992.4	-1,457.5	-2,685.5	2,861.9	0.00	0.00	0.00
11,400.0	90.41	271.70	6,991.6	-1,454.6	-2,785.4	2,960.4	0.00	0.00	0.00
11,500.0	90.41	271.70	6,990.9	-1,451.6	-2,885.4	3,059.0	0.00	0.00	0.00
11,600.0	90.41	271.70	6,990.2	-1,448.6	-2,985.3	3,157.6	0.00	0.00	0.00
11,700.0	90.41	271.70	6,989.5	-1,445.6	-3,085.3	3,256.1	0.00	0.00	0.00
11,800.0	90.41	271.70	6,988.8	-1,442.7	-3,185.2	3,354.7	0.00	0.00	0.00
11,900.0	90.41	271.70	6,988.0	-1,439.7	-3,285.2	3,453.3	0.00	0.00	0.00
12,000.0	90.41	271.70	6,987.3	-1,436.7	-3,385.2	3,551.9	0.00	0.00	0.00
12,100.0	90.41	271.70	6,986.6	-1,433.8	-3,485.1	3,650.4	0.00	0.00	0.00
12,200.0	90.41	271.70	6,985.9	-1,430.8	-3,585.1	3,749.0	0.00	0.00	0.00
12,300.0	90.41	271.70	6,985.2	-1,427.8	-3,685.0	3,847.6	0.00	0.00	0.00
12,400.0	90.41	271.70	6,984.4	-1,424.8	-3,785.0	3,946.1	0.00	0.00	0.00
12,500.0	90.41	271.70	6,983.7	-1,421.9	-3,884.9	4,044.7	0.00	0.00	0.00
12,600.0	90.41	271.70	6,983.0	-1,418.9	-3,984.9	4,143.3	0.00	0.00	0.00
12,700.0	90.41	271.70	6,982.3	-1,415.9	-4,084.8	4,241.9	0.00	0.00	0.00
12,800.0	90.41	271.70	6,981.6	-1,412.9	-4,184.8	4,340.4	0.00	0.00	0.00
12,900.0	90.41	271.70	6,980.8	-1,410.0	-4,284.7	4,439.0	0.00	0.00	0.00
12,969.1	90.41	271.70	6,980.3	-1,407.9	-4,353.8	4,507.1	0.00	0.00	0.00
13,000.0	90.42	271.09	6,980.1	-1,407.2	-4,384.7	4,537.6	2.00	0.03	-2.00
13,014.8	90.42	270.79	6,980.0	-1,406.9	-4,399.5	4,552.2	2.00	0.03	-2.00
GF T-34-33HN VP									
13,100.0	90.42	270.79	6,979.4	-1,405.7	-4,484.7	4,636.4	0.00	0.00	0.00
13,200.0	90.42	270.79	6,978.6	-1,404.4	-4,584.7	4,735.3	0.00	0.00	0.00
13,300.0	90.42	270.79	6,977.9	-1,403.0	-4,684.7	4,834.1	0.00	0.00	0.00
13,400.0	90.42	270.79	6,977.1	-1,401.6	-4,784.6	4,932.9	0.00	0.00	0.00
13,500.0	90.42	270.79	6,976.4	-1,400.2	-4,884.6	5,031.7	0.00	0.00	0.00
13,600.0	90.42	270.79	6,975.7	-1,398.9	-4,984.6	5,130.6	0.00	0.00	0.00
13,700.0	90.42	270.79	6,974.9	-1,397.5	-5,084.6	5,229.4	0.00	0.00	0.00
13,800.0	90.42	270.79	6,974.2	-1,396.1	-5,184.6	5,328.2	0.00	0.00	0.00
13,900.0	90.42	270.79	6,973.4	-1,394.7	-5,284.6	5,427.1	0.00	0.00	0.00
14,000.0	90.42	270.79	6,972.7	-1,393.4	-5,384.6	5,525.9	0.00	0.00	0.00
14,100.0	90.42	270.79	6,972.0	-1,392.0	-5,484.6	5,624.7	0.00	0.00	0.00
14,200.0	90.42	270.79	6,971.2	-1,390.6	-5,584.5	5,723.5	0.00	0.00	0.00
14,300.0	90.42	270.79	6,970.5	-1,389.2	-5,684.5	5,822.4	0.00	0.00	0.00
14,400.0	90.42	270.79	6,969.7	-1,387.8	-5,784.5	5,921.2	0.00	0.00	0.00
14,500.0	90.42	270.79	6,969.0	-1,386.5	-5,884.5	6,020.0	0.00	0.00	0.00
14,600.0	90.42	270.79	6,968.3	-1,385.1	-5,984.5	6,118.8	0.00	0.00	0.00
14,700.0	90.42	270.79	6,967.5	-1,383.7	-6,084.5	6,217.7	0.00	0.00	0.00
14,800.0	90.42	270.79	6,966.8	-1,382.3	-6,184.5	6,316.5	0.00	0.00	0.00
14,900.0	90.42	270.79	6,966.0	-1,381.0	-6,284.5	6,415.3	0.00	0.00	0.00
15,000.0	90.42	270.79	6,965.3	-1,379.6	-6,384.4	6,514.2	0.00	0.00	0.00



<b>Database:</b>	EDM	<b>Local Co-ordinate Reference:</b>	Well GROVES FARM T-34-33HN
<b>Company:</b>	Bayswater Exploration & Production, LLC	<b>TVD Reference:</b>	KB @ 4867.0usft (Original Well Elev)
<b>Project:</b>	DJ Basin	<b>MD Reference:</b>	KB @ 4867.0usft (Original Well Elev)
<b>Site:</b>	Groves Farm 34-L Pad	<b>North Reference:</b>	True
<b>Well:</b>	GROVES FARM T-34-33HN	<b>Survey Calculation Method:</b>	Minimum Curvature
<b>Wellbore:</b>	Wellbore #1		
<b>Design:</b>	Design #1		

Planned Survey										
Measured Depth (usft)	Inclination (°)	Azimuth (°)	Vertical Depth (usft)	+N/-S (usft)	+E/-W (usft)	Vertical Section (usft)	Dogleg Rate (°/100usft)	Build Rate (°/100usft)	Turn Rate (°/100usft)	
15,100.0	90.42	270.79	6,964.6	-1,378.2	-6,484.4	6,613.0	0.00	0.00	0.00	
15,200.0	90.42	270.79	6,963.8	-1,376.8	-6,584.4	6,711.8	0.00	0.00	0.00	
15,300.0	90.42	270.79	6,963.1	-1,375.5	-6,684.4	6,810.6	0.00	0.00	0.00	
15,400.0	90.42	270.79	6,962.3	-1,374.1	-6,784.4	6,909.5	0.00	0.00	0.00	
15,500.0	90.42	270.79	6,961.6	-1,372.7	-6,884.4	7,008.3	0.00	0.00	0.00	
15,600.0	90.42	270.79	6,960.9	-1,371.3	-6,984.4	7,107.1	0.00	0.00	0.00	
15,700.0	90.42	270.79	6,960.1	-1,369.9	-7,084.4	7,206.0	0.00	0.00	0.00	
15,800.0	90.42	270.79	6,959.4	-1,368.6	-7,184.3	7,304.8	0.00	0.00	0.00	
15,900.0	90.42	270.79	6,958.6	-1,367.2	-7,284.3	7,403.6	0.00	0.00	0.00	
16,000.0	90.42	270.79	6,957.9	-1,365.8	-7,384.3	7,502.4	0.00	0.00	0.00	
16,100.0	90.42	270.79	6,957.2	-1,364.4	-7,484.3	7,601.3	0.00	0.00	0.00	
16,200.0	90.42	270.79	6,956.4	-1,363.1	-7,584.3	7,700.1	0.00	0.00	0.00	
16,300.0	90.42	270.79	6,955.7	-1,361.7	-7,684.3	7,798.9	0.00	0.00	0.00	
16,400.0	90.42	270.79	6,954.9	-1,360.3	-7,784.3	7,897.8	0.00	0.00	0.00	
16,500.0	90.42	270.79	6,954.2	-1,358.9	-7,884.3	7,996.6	0.00	0.00	0.00	
16,600.0	90.42	270.79	6,953.5	-1,357.5	-7,984.3	8,095.4	0.00	0.00	0.00	
16,700.0	90.42	270.79	6,952.7	-1,356.2	-8,084.2	8,194.2	0.00	0.00	0.00	
16,800.0	90.42	270.79	6,952.0	-1,354.8	-8,184.2	8,293.1	0.00	0.00	0.00	
16,900.0	90.42	270.79	6,951.2	-1,353.4	-8,284.2	8,391.9	0.00	0.00	0.00	
17,000.0	90.42	270.79	6,950.5	-1,352.0	-8,384.2	8,490.7	0.00	0.00	0.00	
17,100.0	90.42	270.79	6,949.7	-1,350.7	-8,484.2	8,589.5	0.00	0.00	0.00	
17,200.0	90.42	270.79	6,949.0	-1,349.3	-8,584.2	8,688.4	0.00	0.00	0.00	
17,300.0	90.42	270.79	6,948.3	-1,347.9	-8,684.2	8,787.2	0.00	0.00	0.00	
17,400.0	90.42	270.79	6,947.5	-1,346.5	-8,784.2	8,886.0	0.00	0.00	0.00	
17,500.0	90.42	270.79	6,946.8	-1,345.2	-8,884.1	8,984.9	0.00	0.00	0.00	
17,600.0	90.42	270.79	6,946.0	-1,343.8	-8,984.1	9,083.7	0.00	0.00	0.00	
17,700.0	90.42	270.79	6,945.3	-1,342.4	-9,084.1	9,182.5	0.00	0.00	0.00	
17,800.0	90.42	270.79	6,944.6	-1,341.0	-9,184.1	9,281.3	0.00	0.00	0.00	
17,900.0	90.42	270.79	6,943.8	-1,339.6	-9,284.1	9,380.2	0.00	0.00	0.00	
18,000.0	90.42	270.79	6,943.1	-1,338.3	-9,384.1	9,479.0	0.00	0.00	0.00	
18,100.0	90.42	270.79	6,942.3	-1,336.9	-9,484.1	9,577.8	0.00	0.00	0.00	
18,146.3	90.42	270.79	6,942.0	-1,336.3	-9,530.4	9,623.6	0.00	0.00	0.00	
GF T-34-33HN PBHL										

Design Targets										
Target Name	Dip Angle (°)	Dip Dir. (°)	TVD (usft)	+N/-S (usft)	+E/-W (usft)	Northing (usft)	Easting (usft)	Latitude	Longitude	
GF T-34-33HN PBHL - hit/miss target - Shape - Point	0.00	0.00	6,942.0	-1,336.3	-9,530.4	1,435,652.57	3,228,723.20	40° 31' 34.874 N	104° 40' 37.981 W	
GF T-34-33HN VP - plan hits target center - Point	0.00	0.00	6,980.0	-1,406.9	-4,399.5	1,435,631.49	3,233,854.52	40° 31' 34.190 N	104° 39' 31.536 W	
GF T-34-33HN LP - plan hits target center - Point	0.00	0.00	7,017.0	-1,559.2	733.3	1,435,528.81	3,238,988.60	40° 31' 32.689 N	104° 38' 25.066 W	