



Pad Name: Groves Farm 34-L Pad  
Well Name: GROVES FARM S-34-33HC  
Ground Level: 4844.0  
SHL Latitude: 40° 31' 48.245 N  
SHL Longitude: 104° 38' 34.559 W

## SECTION DETAILS

Sec	MD	Inc	Azi	TVD	+N/-S	+E/-W	Dleg	TFace	VSect	Target
1	0.0	0.00	0.00	0.0	0.0	0.0	0.00	0.00	0.0	
2	1500.0	0.00	0.00	1500.0	0.0	0.0	0.00	0.00	0.0	
3	2947.0	28.94	136.03	2886.3	-257.5	248.4	2.00	136.03	-216.4	
4	5342.7	28.94	136.03	4982.8	-1091.8	1053.3	0.00	0.00	-917.5	
5	6789.7	0.00	271.71	6369.1	-1349.2	1301.6	2.00	180.00	-1133.8	
6	6989.7	0.00	271.71	6569.1	-1349.2	1301.6	0.00	0.00	-1133.8	
7	7885.6	89.59	271.71	7142.0	-1332.3	733.1	10.00	0.00	-571.2	GF S-34-33HC LP
8	13022.2	89.59	271.71	7179.0	-1178.9	-4401.1	0.00	0.00	4509.3	GF S-34-33HC VP
9	13080.4	89.59	270.55	7179.4	-1177.7	-4459.3	2.00	-89.87	4566.9	GF S-34-33HC PBHL
10	18150.9	89.59	270.55	7215.7	-1129.3	-9529.5	0.00	0.00	9596.1	GF S-34-33HC PBHL

## DESIGN TARGET DETAILS

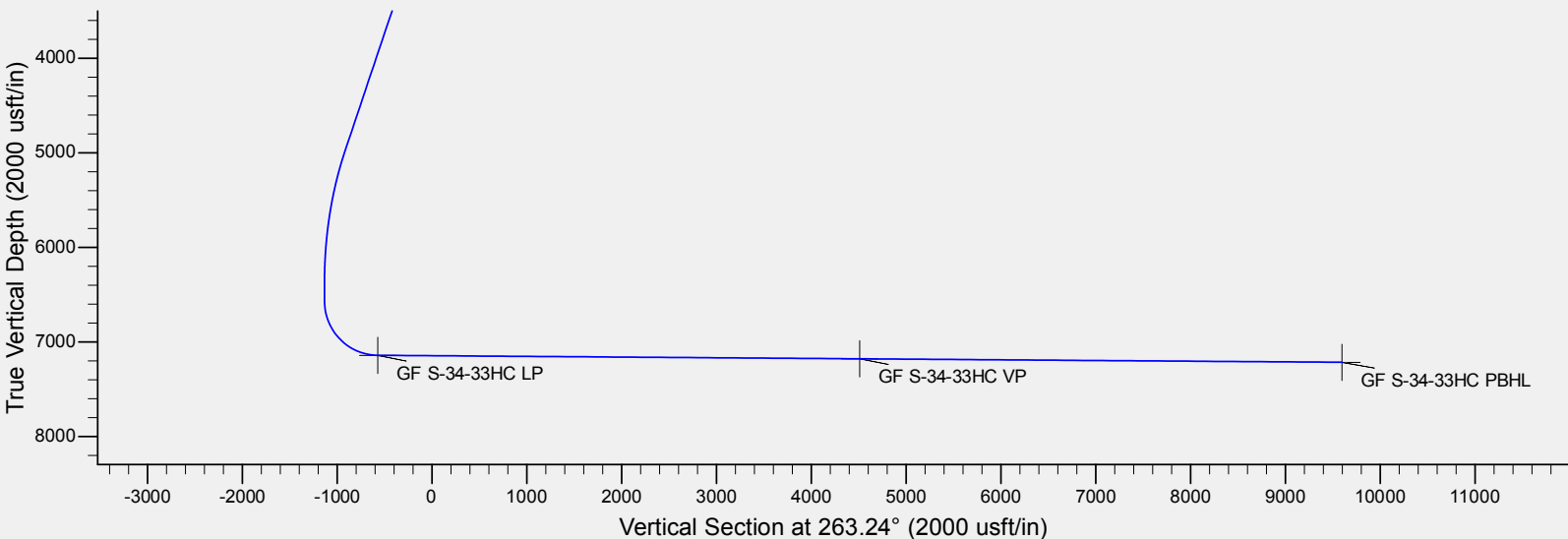
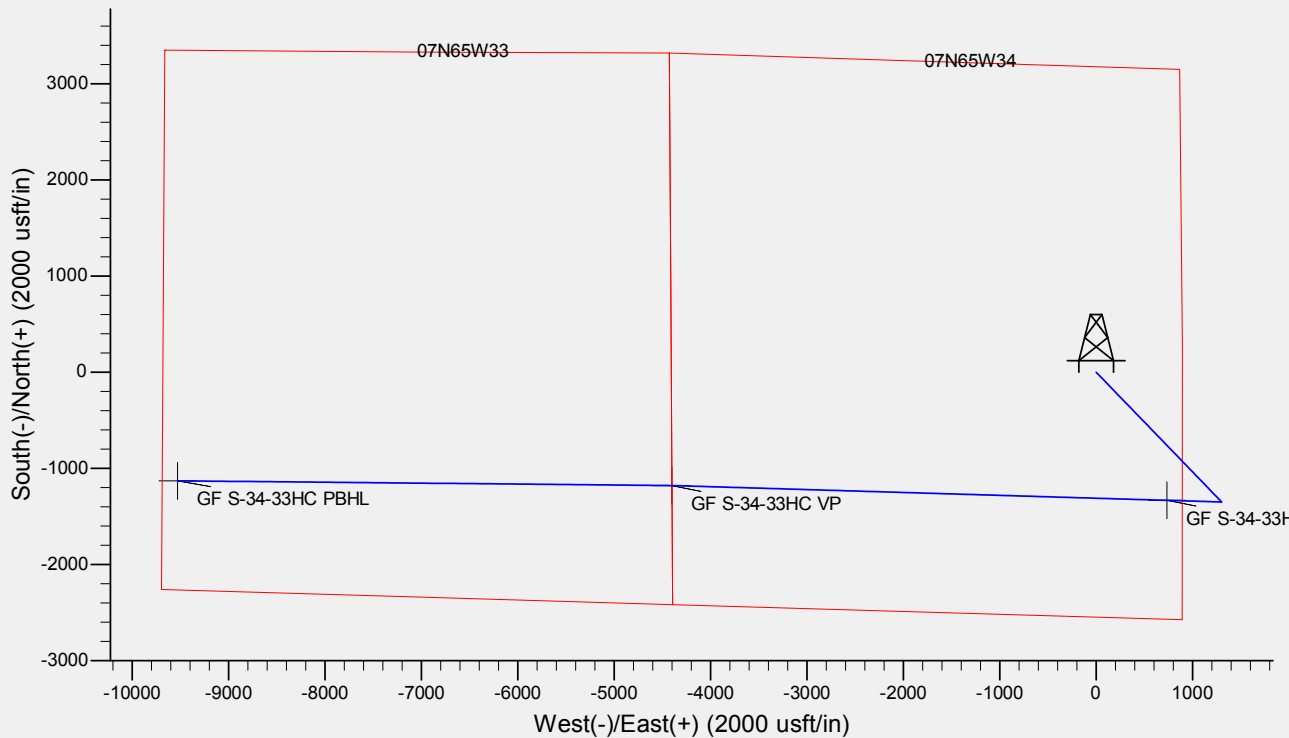
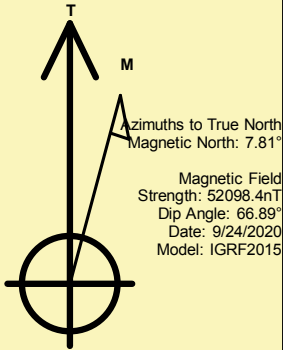
Name	TVD	+N/-S	+E/-W	Northing	Easting	Latitude	Longitude	Shape
GF S-34-33HC LP	7142.0	-1332.3	733.1	1435770.70	3238986.25	40° 31' 35.080 N	104° 38' 25.066 W	Point
GF S-34-33HC VP	- plan hits target center 7179.0	-1178.9	-4401.1	1435874.46	3233850.82	40° 31' 36.592 N	104° 39' 31.554 W	Point
GF S-34-33HC PBHL	- plan hits target center 7217.0	-1129.3	-9529.5	1435874.43	3228722.25	40° 31' 37.067 N	104° 40' 37.967 W	Point
GF S-34-33HC PBHL	- plan misses target center by 1.3usft at 18150.9usft MD (7215.7 TVD, -1129.3 N, -9529.5 E) 7217.0	-1129.3	-9529.5	1435874.43	3228722.25	40° 31' 37.067 N	104° 40' 37.967 W	Point

## REFERENCE INFORMATION

Co-ordinate (N/E) Reference: Well GROVES FARM S-34-33HC, True North  
Vertical (TVD) Reference: KB @ 4867.0usft (Original Well Elev)  
Section (VS) Reference: Slot - (0.0N, 0.0E)  
Measured Depth Reference: KB @ 4867.0usft (Original Well Elev)  
Calculation Method: Minimum Curvature

## CASING DETAILS

No casing data is available





**BAYSWATER**

# **Bayswater Exploration & Production, LLC**

**DJ Basin**

**Groves Farm 34-L Pad**

**GROVES FARM S-34-33HC**

**Wellbore #1**

**Plan: Design #1**

## **Standard Planning Report**

**26 September, 2020**



<b>Database:</b>	EDM	<b>Local Co-ordinate Reference:</b>	Well GROVES FARM S-34-33HC
<b>Company:</b>	Bayswater Exploration & Production, LLC	<b>TVD Reference:</b>	KB @ 4867.0usft (Original Well Elev)
<b>Project:</b>	DJ Basin	<b>MD Reference:</b>	KB @ 4867.0usft (Original Well Elev)
<b>Site:</b>	Groves Farm 34-L Pad	<b>North Reference:</b>	True
<b>Well:</b>	GROVES FARM S-34-33HC	<b>Survey Calculation Method:</b>	Minimum Curvature
<b>Wellbore:</b>	Wellbore #1		
<b>Design:</b>	Design #1		

<b>Project</b>	DJ Basin, DJ Basin		
<b>Map System:</b>	US State Plane 1983	<b>System Datum:</b>	Mean Sea Level
<b>Geo Datum:</b>	North American Datum 1983		
<b>Map Zone:</b>	Colorado Northern Zone		

Site		Groves Farm 34-L Pad			
Site Position:		Northing:	1,437,185.82 usft	Latitude:	40° 31' 49.134 N
From:	Lat/Long	Easting:	3,238,241.98 usft	Longitude:	104° 38' 34.526 W
Position Uncertainty:	0.0 usft	Slot Radius:	13-3/16 "	Grid Convergence:	0.55 °

Well	GROVES FARM S-34-33HC					
Well Position	+N/-S	-90.0 usft	Northing:	1,437,095.81 usft	Latitude:	40° 31' 48.245 N
	+E/-W	-2.5 usft	Easting:	3,238,240.35 usft	Longitude:	104° 38' 34.559 W
Position Uncertainty		0.0 usft	Wellhead Elevation:		Ground Level:	4,844.0 usft

<b>Wellbore</b>	Wellbore #1				
<b>Magnetics</b>	<b>Model Name</b>	<b>Sample Date</b>	<b>Declination (°)</b>	<b>Dip Angle (°)</b>	<b>Field Strength (nT)</b>
	IGRF2015	9/24/2020	7.81	66.89	52,098.37409322

<b>Design</b>	Design #1				
<b>Audit Notes:</b>					
<b>Version:</b>		<b>Phase:</b>	PLAN	<b>Tie On Depth:</b>	0.0
<b>Vertical Section:</b>	<b>Depth From (TVD) (usft)</b>	<b>+N/-S (usft)</b>	<b>+E/-W (usft)</b>	<b>Direction (°)</b>	
	0.0	0.0	0.0	263.24	

<b>Plan Survey Tool Program</b>	<b>Date</b>	9/24/2020			
<b>Depth From (usft)</b>	<b>Depth To (usft)</b>	<b>Survey (Wellbore)</b>	<b>Tool Name</b>	<b>Remarks</b>	
1	0.0	18,150.9	Design #1 (Wellbore #1)	MWD	
				OWSG MWD - Standard	



<b>Database:</b>	EDM	<b>Local Co-ordinate Reference:</b>	Well GROVES FARM S-34-33HC
<b>Company:</b>	Bayswater Exploration & Production, LLC	<b>TVD Reference:</b>	KB @ 4867.0usft (Original Well Elev)
<b>Project:</b>	DJ Basin	<b>MD Reference:</b>	KB @ 4867.0usft (Original Well Elev)
<b>Site:</b>	Groves Farm 34-L Pad	<b>North Reference:</b>	True
<b>Well:</b>	GROVES FARM S-34-33HC	<b>Survey Calculation Method:</b>	Minimum Curvature
<b>Wellbore:</b>	Wellbore #1		
<b>Design:</b>	Design #1		

Plan Sections										
Measured Depth (usft)	Inclination (°)	Azimuth (°)	Vertical Depth (usft)	+N/-S (usft)	+E/-W (usft)	Dogleg Rate (°/100usft)	Build Rate (°/100usft)	Turn Rate (°/100usft)	TFO (°)	Target
0.0	0.00	0.00	0.0	0.0	0.0	0.00	0.00	0.00	0.00	
1,500.0	0.00	0.00	1,500.0	0.0	0.0	0.00	0.00	0.00	0.00	
2,947.0	28.94	136.03	2,886.3	-257.5	248.4	2.00	2.00	0.00	136.03	
5,342.7	28.94	136.03	4,982.8	-1,091.8	1,053.3	0.00	0.00	0.00	0.00	
6,789.7	0.00	271.71	6,369.1	-1,349.2	1,301.6	2.00	-2.00	0.00	180.00	
6,989.7	0.00	271.71	6,569.1	-1,349.2	1,301.6	0.00	0.00	0.00	0.00	
7,885.6	89.59	271.71	7,142.0	-1,332.3	733.1	10.00	10.00	0.00	0.00	GF S-34-33HC LP
13,022.2	89.59	271.71	7,179.0	-1,178.9	-4,401.1	0.00	0.00	0.00	0.00	GF S-34-33HC VP
13,080.4	89.59	270.55	7,179.4	-1,177.7	-4,459.3	2.00	0.00	-2.00	-89.87	GF S-34-33HC PBHL
18,150.9	89.59	270.55	7,215.7	-1,129.3	-9,529.5	0.00	0.00	0.00	0.00	GF S-34-33HC PBHL



<b>Database:</b>	EDM	<b>Local Co-ordinate Reference:</b>	Well GROVES FARM S-34-33HC
<b>Company:</b>	Bayswater Exploration & Production, LLC	<b>TVD Reference:</b>	KB @ 4867.0usft (Original Well Elev)
<b>Project:</b>	DJ Basin	<b>MD Reference:</b>	KB @ 4867.0usft (Original Well Elev)
<b>Site:</b>	Groves Farm 34-L Pad	<b>North Reference:</b>	True
<b>Well:</b>	GROVES FARM S-34-33HC	<b>Survey Calculation Method:</b>	Minimum Curvature
<b>Wellbore:</b>	Wellbore #1		
<b>Design:</b>	Design #1		

Planned Survey									
Measured Depth (usft)	Inclination (°)	Azimuth (°)	Vertical Depth (usft)	+N/-S (usft)	+E/-W (usft)	Vertical Section (usft)	Dogleg Rate (°/100usft)	Build Rate (°/100usft)	Turn Rate (°/100usft)
0.0	0.00	0.00	0.0	0.0	0.0	0.0	0.00	0.00	0.00
100.0	0.00	0.00	100.0	0.0	0.0	0.0	0.00	0.00	0.00
200.0	0.00	0.00	200.0	0.0	0.0	0.0	0.00	0.00	0.00
300.0	0.00	0.00	300.0	0.0	0.0	0.0	0.00	0.00	0.00
400.0	0.00	0.00	400.0	0.0	0.0	0.0	0.00	0.00	0.00
500.0	0.00	0.00	500.0	0.0	0.0	0.0	0.00	0.00	0.00
600.0	0.00	0.00	600.0	0.0	0.0	0.0	0.00	0.00	0.00
700.0	0.00	0.00	700.0	0.0	0.0	0.0	0.00	0.00	0.00
800.0	0.00	0.00	800.0	0.0	0.0	0.0	0.00	0.00	0.00
900.0	0.00	0.00	900.0	0.0	0.0	0.0	0.00	0.00	0.00
1,000.0	0.00	0.00	1,000.0	0.0	0.0	0.0	0.00	0.00	0.00
1,100.0	0.00	0.00	1,100.0	0.0	0.0	0.0	0.00	0.00	0.00
1,200.0	0.00	0.00	1,200.0	0.0	0.0	0.0	0.00	0.00	0.00
1,300.0	0.00	0.00	1,300.0	0.0	0.0	0.0	0.00	0.00	0.00
1,400.0	0.00	0.00	1,400.0	0.0	0.0	0.0	0.00	0.00	0.00
1,500.0	0.00	0.00	1,500.0	0.0	0.0	0.0	0.00	0.00	0.00
1,600.0	2.00	136.03	1,600.0	-1.3	1.2	-1.1	2.00	2.00	0.00
1,700.0	4.00	136.03	1,699.8	-5.0	4.8	-4.2	2.00	2.00	0.00
1,800.0	6.00	136.03	1,799.5	-11.3	10.9	-9.5	2.00	2.00	0.00
1,900.0	8.00	136.03	1,898.7	-20.1	19.4	-16.9	2.00	2.00	0.00
2,000.0	10.00	136.03	1,997.5	-31.3	30.2	-26.3	2.00	2.00	0.00
2,100.0	12.00	136.03	2,095.6	-45.1	43.5	-37.9	2.00	2.00	0.00
2,200.0	14.00	136.03	2,193.1	-61.2	59.1	-51.5	2.00	2.00	0.00
2,300.0	16.00	136.03	2,289.6	-79.9	77.1	-67.1	2.00	2.00	0.00
2,400.0	18.00	136.03	2,385.3	-100.9	97.3	-84.8	2.00	2.00	0.00
2,500.0	20.00	136.03	2,479.8	-124.3	120.0	-104.5	2.00	2.00	0.00
2,600.0	22.00	136.03	2,573.2	-150.1	144.8	-126.2	2.00	2.00	0.00
2,700.0	24.00	136.03	2,665.2	-178.2	172.0	-149.8	2.00	2.00	0.00
2,800.0	26.00	136.03	2,755.8	-208.7	201.3	-175.3	2.00	2.00	0.00
2,900.0	28.00	136.03	2,844.9	-241.3	232.8	-202.8	2.00	2.00	0.00
2,947.0	28.94	136.03	2,886.3	-257.5	248.4	-216.4	2.00	2.00	0.00
3,000.0	28.94	136.03	2,932.6	-275.9	266.2	-231.9	0.00	0.00	0.00
3,100.0	28.94	136.03	3,020.1	-310.7	299.8	-261.1	0.00	0.00	0.00
3,200.0	28.94	136.03	3,107.7	-345.6	333.4	-290.4	0.00	0.00	0.00
3,300.0	28.94	136.03	3,195.2	-380.4	367.0	-319.7	0.00	0.00	0.00
3,400.0	28.94	136.03	3,282.7	-415.2	400.6	-348.9	0.00	0.00	0.00
3,500.0	28.94	136.03	3,370.2	-450.0	434.2	-378.2	0.00	0.00	0.00
3,600.0	28.94	136.03	3,457.7	-484.9	467.8	-407.5	0.00	0.00	0.00
3,700.0	28.94	136.03	3,545.2	-519.7	501.4	-436.7	0.00	0.00	0.00
3,800.0	28.94	136.03	3,632.7	-554.5	535.0	-466.0	0.00	0.00	0.00
3,900.0	28.94	136.03	3,720.2	-589.3	568.6	-495.2	0.00	0.00	0.00
4,000.0	28.94	136.03	3,807.8	-624.2	602.2	-524.5	0.00	0.00	0.00
4,100.0	28.94	136.03	3,895.3	-659.0	635.7	-553.8	0.00	0.00	0.00
4,200.0	28.94	136.03	3,982.8	-693.8	669.3	-583.0	0.00	0.00	0.00
4,300.0	28.94	136.03	4,070.3	-728.6	702.9	-612.3	0.00	0.00	0.00
4,400.0	28.94	136.03	4,157.8	-763.5	736.5	-641.6	0.00	0.00	0.00
4,500.0	28.94	136.03	4,245.3	-798.3	770.1	-670.8	0.00	0.00	0.00
4,600.0	28.94	136.03	4,332.8	-833.1	803.7	-700.1	0.00	0.00	0.00
4,700.0	28.94	136.03	4,420.3	-868.0	837.3	-729.4	0.00	0.00	0.00
4,800.0	28.94	136.03	4,507.9	-902.8	870.9	-758.6	0.00	0.00	0.00
4,900.0	28.94	136.03	4,595.4	-937.6	904.5	-787.9	0.00	0.00	0.00
5,000.0	28.94	136.03	4,682.9	-972.4	938.1	-817.2	0.00	0.00	0.00
5,100.0	28.94	136.03	4,770.4	-1,007.3	971.7	-846.4	0.00	0.00	0.00
5,200.0	28.94	136.03	4,857.9	-1,042.1	1,005.3	-875.7	0.00	0.00	0.00



<b>Database:</b>	EDM	<b>Local Co-ordinate Reference:</b>	Well GROVES FARM S-34-33HC
<b>Company:</b>	Bayswater Exploration & Production, LLC	<b>TVD Reference:</b>	KB @ 4867.0usft (Original Well Elev)
<b>Project:</b>	DJ Basin	<b>MD Reference:</b>	KB @ 4867.0usft (Original Well Elev)
<b>Site:</b>	Groves Farm 34-L Pad	<b>North Reference:</b>	True
<b>Well:</b>	GROVES FARM S-34-33HC	<b>Survey Calculation Method:</b>	Minimum Curvature
<b>Wellbore:</b>	Wellbore #1		
<b>Design:</b>	Design #1		

Planned Survey									
Measured Depth (usft)	Inclination (°)	Azimuth (°)	Vertical Depth (usft)	+N/-S (usft)	+E/-W (usft)	Vertical Section (usft)	Dogleg Rate (°/100usft)	Build Rate (°/100usft)	Turn Rate (°/100usft)
5,300.0	28.94	136.03	4,945.4	-1,076.9	1,038.9	-905.0	0.00	0.00	0.00
5,342.7	28.94	136.03	4,982.8	-1,091.8	1,053.3	-917.5	0.00	0.00	0.00
5,400.0	27.79	136.03	5,033.2	-1,111.4	1,072.2	-933.9	2.00	-2.00	0.00
5,500.0	25.79	136.03	5,122.5	-1,143.8	1,103.5	-961.2	2.00	-2.00	0.00
5,600.0	23.79	136.03	5,213.2	-1,174.0	1,132.6	-986.5	2.00	-2.00	0.00
5,700.0	21.79	136.03	5,305.4	-1,201.9	1,159.5	-1,010.0	2.00	-2.00	0.00
5,800.0	19.79	136.03	5,398.9	-1,227.4	1,184.1	-1,031.4	2.00	-2.00	0.00
5,900.0	17.79	136.03	5,493.6	-1,250.6	1,206.5	-1,050.9	2.00	-2.00	0.00
6,000.0	15.79	136.03	5,589.3	-1,271.4	1,226.5	-1,068.4	2.00	-2.00	0.00
6,100.0	13.79	136.03	5,686.0	-1,289.8	1,244.3	-1,083.8	2.00	-2.00	0.00
6,200.0	11.79	136.03	5,783.5	-1,305.7	1,259.6	-1,097.2	2.00	-2.00	0.00
6,300.0	9.79	136.03	5,881.7	-1,319.2	1,272.6	-1,108.6	2.00	-2.00	0.00
6,400.0	7.79	136.03	5,980.5	-1,330.2	1,283.3	-1,117.8	2.00	-2.00	0.00
6,500.0	5.79	136.03	6,079.8	-1,338.7	1,291.5	-1,125.0	2.00	-2.00	0.00
6,600.0	3.79	136.03	6,179.5	-1,344.7	1,297.3	-1,130.0	2.00	-2.00	0.00
6,700.0	1.79	136.03	6,279.4	-1,348.2	1,300.7	-1,133.0	2.00	-2.00	0.00
6,789.7	0.00	271.71	6,369.1	-1,349.2	1,301.6	-1,133.8	2.00	-2.00	0.00
6,800.0	0.00	0.00	6,379.3	-1,349.2	1,301.6	-1,133.8	0.00	0.00	0.00
6,900.0	0.00	0.00	6,479.3	-1,349.2	1,301.6	-1,133.8	0.00	0.00	0.00
6,989.7	0.00	271.71	6,569.1	-1,349.2	1,301.6	-1,133.8	0.00	0.00	0.00
7,000.0	1.03	271.71	6,579.3	-1,349.2	1,301.5	-1,133.7	10.00	10.00	0.00
7,100.0	11.03	271.71	6,678.7	-1,348.9	1,291.1	-1,123.3	10.00	10.00	0.00
7,200.0	21.03	271.71	6,774.6	-1,348.1	1,263.5	-1,096.1	10.00	10.00	0.00
7,300.0	31.03	271.71	6,864.4	-1,346.8	1,219.7	-1,052.7	10.00	10.00	0.00
7,400.0	41.03	271.71	6,945.2	-1,345.0	1,161.0	-994.6	10.00	10.00	0.00
7,500.0	51.03	271.71	7,014.5	-1,342.9	1,089.1	-923.5	10.00	10.00	0.00
7,600.0	61.03	271.71	7,070.3	-1,340.4	1,006.3	-841.6	10.00	10.00	0.00
7,700.0	71.03	271.71	7,110.9	-1,337.7	915.1	-751.3	10.00	10.00	0.00
7,800.0	81.03	271.71	7,135.0	-1,334.8	818.3	-655.5	10.00	10.00	0.00
7,885.6	89.59	271.71	7,142.0	-1,332.3	733.1	-571.2	10.00	10.00	0.00
GF S-34-33HC LP									
7,900.0	89.59	271.71	7,142.1	-1,331.8	718.7	-556.9	0.00	0.00	0.00
8,000.0	89.59	271.71	7,142.8	-1,328.8	618.7	-458.0	0.00	0.00	0.00
8,100.0	89.59	271.71	7,143.5	-1,325.9	518.8	-359.1	0.00	0.00	0.00
8,200.0	89.59	271.71	7,144.3	-1,322.9	418.8	-260.2	0.00	0.00	0.00
8,300.0	89.59	271.71	7,145.0	-1,319.9	318.9	-161.3	0.00	0.00	0.00
8,400.0	89.59	271.71	7,145.7	-1,316.9	218.9	-62.4	0.00	0.00	0.00
8,500.0	89.59	271.71	7,146.4	-1,313.9	118.9	36.5	0.00	0.00	0.00
8,600.0	89.59	271.71	7,147.1	-1,310.9	19.0	135.4	0.00	0.00	0.00
8,700.0	89.59	271.71	7,147.9	-1,307.9	-81.0	234.3	0.00	0.00	0.00
8,800.0	89.59	271.71	7,148.6	-1,304.9	-180.9	333.2	0.00	0.00	0.00
8,900.0	89.59	271.71	7,149.3	-1,302.0	-280.9	432.1	0.00	0.00	0.00
9,000.0	89.59	271.71	7,150.0	-1,299.0	-380.8	531.0	0.00	0.00	0.00
9,100.0	89.59	271.71	7,150.7	-1,296.0	-480.8	629.9	0.00	0.00	0.00
9,200.0	89.59	271.71	7,151.5	-1,293.0	-580.7	728.9	0.00	0.00	0.00
9,300.0	89.59	271.71	7,152.2	-1,290.0	-680.7	827.8	0.00	0.00	0.00
9,400.0	89.59	271.71	7,152.9	-1,287.0	-780.6	926.7	0.00	0.00	0.00
9,500.0	89.59	271.71	7,153.6	-1,284.0	-880.6	1,025.6	0.00	0.00	0.00
9,600.0	89.59	271.71	7,154.3	-1,281.1	-980.5	1,124.5	0.00	0.00	0.00
9,700.0	89.59	271.71	7,155.1	-1,278.1	-1,080.5	1,223.4	0.00	0.00	0.00
9,800.0	89.59	271.71	7,155.8	-1,275.1	-1,180.4	1,322.3	0.00	0.00	0.00
9,900.0	89.59	271.71	7,156.5	-1,272.1	-1,280.4	1,421.2	0.00	0.00	0.00
10,000.0	89.59	271.71	7,157.2	-1,269.1	-1,380.3	1,520.1	0.00	0.00	0.00



<b>Database:</b>	EDM	<b>Local Co-ordinate Reference:</b>	Well GROVES FARM S-34-33HC
<b>Company:</b>	Bayswater Exploration & Production, LLC	<b>TVD Reference:</b>	KB @ 4867.0usft (Original Well Elev)
<b>Project:</b>	DJ Basin	<b>MD Reference:</b>	KB @ 4867.0usft (Original Well Elev)
<b>Site:</b>	Groves Farm 34-L Pad	<b>North Reference:</b>	True
<b>Well:</b>	GROVES FARM S-34-33HC	<b>Survey Calculation Method:</b>	Minimum Curvature
<b>Wellbore:</b>	Wellbore #1		
<b>Design:</b>	Design #1		

Planned Survey										
Measured Depth (usft)	Inclination (°)	Azimuth (°)	Vertical Depth (usft)	+N/-S (usft)	+E/-W (usft)	Vertical Section (usft)	Dogleg Rate (°/100usft)	Build Rate (°/100usft)	Turn Rate (°/100usft)	
10,100.0	89.59	271.71	7,158.0	-1,266.1	-1,480.3	1,619.0	0.00	0.00	0.00	
10,200.0	89.59	271.71	7,158.7	-1,263.1	-1,580.3	1,717.9	0.00	0.00	0.00	
10,300.0	89.59	271.71	7,159.4	-1,260.2	-1,680.2	1,816.8	0.00	0.00	0.00	
10,400.0	89.59	271.71	7,160.1	-1,257.2	-1,780.2	1,915.7	0.00	0.00	0.00	
10,500.0	89.59	271.71	7,160.8	-1,254.2	-1,880.1	2,014.6	0.00	0.00	0.00	
10,600.0	89.59	271.71	7,161.6	-1,251.2	-1,980.1	2,113.6	0.00	0.00	0.00	
10,700.0	89.59	271.71	7,162.3	-1,248.2	-2,080.0	2,212.5	0.00	0.00	0.00	
10,800.0	89.59	271.71	7,163.0	-1,245.2	-2,180.0	2,311.4	0.00	0.00	0.00	
10,900.0	89.59	271.71	7,163.7	-1,242.2	-2,279.9	2,410.3	0.00	0.00	0.00	
11,000.0	89.59	271.71	7,164.4	-1,239.3	-2,379.9	2,509.2	0.00	0.00	0.00	
11,100.0	89.59	271.71	7,165.2	-1,236.3	-2,479.8	2,608.1	0.00	0.00	0.00	
11,200.0	89.59	271.71	7,165.9	-1,233.3	-2,579.8	2,707.0	0.00	0.00	0.00	
11,300.0	89.59	271.71	7,166.6	-1,230.3	-2,679.7	2,805.9	0.00	0.00	0.00	
11,400.0	89.59	271.71	7,167.3	-1,227.3	-2,779.7	2,904.8	0.00	0.00	0.00	
11,500.0	89.59	271.71	7,168.0	-1,224.3	-2,879.6	3,003.7	0.00	0.00	0.00	
11,600.0	89.59	271.71	7,168.8	-1,221.3	-2,979.6	3,102.6	0.00	0.00	0.00	
11,700.0	89.59	271.71	7,169.5	-1,218.3	-3,079.5	3,201.5	0.00	0.00	0.00	
11,800.0	89.59	271.71	7,170.2	-1,215.4	-3,179.5	3,300.4	0.00	0.00	0.00	
11,900.0	89.59	271.71	7,170.9	-1,212.4	-3,279.4	3,399.3	0.00	0.00	0.00	
12,000.0	89.59	271.71	7,171.6	-1,209.4	-3,379.4	3,498.2	0.00	0.00	0.00	
12,100.0	89.59	271.71	7,172.4	-1,206.4	-3,479.4	3,597.2	0.00	0.00	0.00	
12,200.0	89.59	271.71	7,173.1	-1,203.4	-3,579.3	3,696.1	0.00	0.00	0.00	
12,300.0	89.59	271.71	7,173.8	-1,200.4	-3,679.3	3,795.0	0.00	0.00	0.00	
12,400.0	89.59	271.71	7,174.5	-1,197.4	-3,779.2	3,893.9	0.00	0.00	0.00	
12,500.0	89.59	271.71	7,175.2	-1,194.5	-3,879.2	3,992.8	0.00	0.00	0.00	
12,600.0	89.59	271.71	7,176.0	-1,191.5	-3,979.1	4,091.7	0.00	0.00	0.00	
12,700.0	89.59	271.71	7,176.7	-1,188.5	-4,079.1	4,190.6	0.00	0.00	0.00	
12,800.0	89.59	271.71	7,177.4	-1,185.5	-4,179.0	4,289.5	0.00	0.00	0.00	
12,900.0	89.59	271.71	7,178.1	-1,182.5	-4,279.0	4,388.4	0.00	0.00	0.00	
13,000.0	89.59	271.71	7,178.8	-1,179.5	-4,378.9	4,487.3	0.00	0.00	0.00	
13,022.2	89.59	271.71	7,179.0	-1,178.9	-4,401.1	4,509.3	0.00	0.00	0.00	
GF S-34-33HC VP										
13,080.4	89.59	270.55	7,179.4	-1,177.7	-4,459.3	4,566.9	2.00	0.00	-2.00	
13,100.0	89.59	270.55	7,179.6	-1,177.5	-4,478.9	4,586.4	0.00	0.00	0.00	
13,200.0	89.59	270.55	7,180.3	-1,176.6	-4,578.9	4,685.5	0.00	0.00	0.00	
13,300.0	89.59	270.55	7,181.0	-1,175.6	-4,678.9	4,784.7	0.00	0.00	0.00	
13,400.0	89.59	270.55	7,181.7	-1,174.7	-4,778.9	4,883.9	0.00	0.00	0.00	
13,500.0	89.59	270.55	7,182.4	-1,173.7	-4,878.9	4,983.1	0.00	0.00	0.00	
13,600.0	89.59	270.55	7,183.1	-1,172.8	-4,978.9	5,082.3	0.00	0.00	0.00	
13,700.0	89.59	270.55	7,183.9	-1,171.8	-5,078.9	5,181.5	0.00	0.00	0.00	
13,800.0	89.59	270.55	7,184.6	-1,170.8	-5,178.9	5,280.7	0.00	0.00	0.00	
13,900.0	89.59	270.55	7,185.3	-1,169.9	-5,278.8	5,379.8	0.00	0.00	0.00	
14,000.0	89.59	270.55	7,186.0	-1,168.9	-5,378.8	5,479.0	0.00	0.00	0.00	
14,100.0	89.59	270.55	7,186.7	-1,168.0	-5,478.8	5,578.2	0.00	0.00	0.00	
14,200.0	89.59	270.55	7,187.4	-1,167.0	-5,578.8	5,677.4	0.00	0.00	0.00	
14,300.0	89.59	270.55	7,188.1	-1,166.1	-5,678.8	5,776.6	0.00	0.00	0.00	
14,400.0	89.59	270.55	7,188.9	-1,165.1	-5,778.8	5,875.8	0.00	0.00	0.00	
14,500.0	89.59	270.55	7,189.6	-1,164.2	-5,878.8	5,975.0	0.00	0.00	0.00	
14,600.0	89.59	270.55	7,190.3	-1,163.2	-5,978.8	6,074.1	0.00	0.00	0.00	
14,700.0	89.59	270.55	7,191.0	-1,162.3	-6,078.8	6,173.3	0.00	0.00	0.00	
14,800.0	89.59	270.55	7,191.7	-1,161.3	-6,178.8	6,272.5	0.00	0.00	0.00	
14,900.0	89.59	270.55	7,192.4	-1,160.4	-6,278.8	6,371.7	0.00	0.00	0.00	
15,000.0	89.59	270.55	7,193.2	-1,159.4	-6,378.8	6,470.9	0.00	0.00	0.00	
15,100.0	89.59	270.55	7,193.9	-1,158.4	-6,478.8	6,570.1	0.00	0.00	0.00	



<b>Database:</b>	EDM	<b>Local Co-ordinate Reference:</b>	Well GROVES FARM S-34-33HC
<b>Company:</b>	Bayswater Exploration & Production, LLC	<b>TVD Reference:</b>	KB @ 4867.0usft (Original Well Elev)
<b>Project:</b>	DJ Basin	<b>MD Reference:</b>	KB @ 4867.0usft (Original Well Elev)
<b>Site:</b>	Groves Farm 34-L Pad	<b>North Reference:</b>	True
<b>Well:</b>	GROVES FARM S-34-33HC	<b>Survey Calculation Method:</b>	Minimum Curvature
<b>Wellbore:</b>	Wellbore #1		
<b>Design:</b>	Design #1		

Planned Survey										
Measured Depth (usft)	Inclination (°)	Azimuth (°)	Vertical Depth (usft)	+N/-S (usft)	+E/-W (usft)	Vertical Section (usft)	Dogleg Rate (°/100usft)	Build Rate (°/100usft)	Turn Rate (°/100usft)	
15,200.0	89.59	270.55	7,194.6	-1,157.5	-6,578.8	6,669.3	0.00	0.00	0.00	
15,300.0	89.59	270.55	7,195.3	-1,156.5	-6,678.7	6,768.4	0.00	0.00	0.00	
15,400.0	89.59	270.55	7,196.0	-1,155.6	-6,778.7	6,867.6	0.00	0.00	0.00	
15,500.0	89.59	270.55	7,196.7	-1,154.6	-6,878.7	6,966.8	0.00	0.00	0.00	
15,600.0	89.59	270.55	7,197.4	-1,153.7	-6,978.7	7,066.0	0.00	0.00	0.00	
15,700.0	89.59	270.55	7,198.2	-1,152.7	-7,078.7	7,165.2	0.00	0.00	0.00	
15,800.0	89.59	270.55	7,198.9	-1,151.8	-7,178.7	7,264.4	0.00	0.00	0.00	
15,900.0	89.59	270.55	7,199.6	-1,150.8	-7,278.7	7,363.6	0.00	0.00	0.00	
16,000.0	89.59	270.55	7,200.3	-1,149.9	-7,378.7	7,462.7	0.00	0.00	0.00	
16,100.0	89.59	270.55	7,201.0	-1,148.9	-7,478.7	7,561.9	0.00	0.00	0.00	
16,200.0	89.59	270.55	7,201.7	-1,147.9	-7,578.7	7,661.1	0.00	0.00	0.00	
16,300.0	89.59	270.55	7,202.5	-1,147.0	-7,678.7	7,760.3	0.00	0.00	0.00	
16,400.0	89.59	270.55	7,203.2	-1,146.0	-7,778.7	7,859.5	0.00	0.00	0.00	
16,500.0	89.59	270.55	7,203.9	-1,145.1	-7,878.7	7,958.7	0.00	0.00	0.00	
16,600.0	89.59	270.55	7,204.6	-1,144.1	-7,978.7	8,057.9	0.00	0.00	0.00	
16,700.0	89.59	270.55	7,205.3	-1,143.2	-8,078.6	8,157.0	0.00	0.00	0.00	
16,800.0	89.59	270.55	7,206.0	-1,142.2	-8,178.6	8,256.2	0.00	0.00	0.00	
16,900.0	89.59	270.55	7,206.7	-1,141.3	-8,278.6	8,355.4	0.00	0.00	0.00	
17,000.0	89.59	270.55	7,207.5	-1,140.3	-8,378.6	8,454.6	0.00	0.00	0.00	
17,100.0	89.59	270.55	7,208.2	-1,139.4	-8,478.6	8,553.8	0.00	0.00	0.00	
17,200.0	89.59	270.55	7,208.9	-1,138.4	-8,578.6	8,653.0	0.00	0.00	0.00	
17,300.0	89.59	270.55	7,209.6	-1,137.4	-8,678.6	8,752.2	0.00	0.00	0.00	
17,400.0	89.59	270.55	7,210.3	-1,136.5	-8,778.6	8,851.3	0.00	0.00	0.00	
17,500.0	89.59	270.55	7,211.0	-1,135.5	-8,878.6	8,950.5	0.00	0.00	0.00	
17,600.0	89.59	270.55	7,211.8	-1,134.6	-8,978.6	9,049.7	0.00	0.00	0.00	
17,700.0	89.59	270.55	7,212.5	-1,133.6	-9,078.6	9,148.9	0.00	0.00	0.00	
17,800.0	89.59	270.55	7,213.2	-1,132.7	-9,178.6	9,248.1	0.00	0.00	0.00	
17,900.0	89.59	270.55	7,213.9	-1,131.7	-9,278.6	9,347.3	0.00	0.00	0.00	
18,000.0	89.59	270.55	7,214.6	-1,130.8	-9,378.6	9,446.5	0.00	0.00	0.00	
18,100.0	89.59	270.55	7,215.3	-1,129.8	-9,478.5	9,545.6	0.00	0.00	0.00	
18,150.9	89.59	270.55	7,215.7	-1,129.3	-9,529.5	9,596.1	0.00	0.00	0.00	
GF S-34-33HC PBHL										

Design Targets										
Target Name	Dip Angle (°)	Dip Dir. (°)	TVD (usft)	+N/-S (usft)	+E/-W (usft)	Northing (usft)	Easting (usft)	Latitude	Longitude	
GF S-34-33HC LP - hit/miss target - Shape - Point	0.00	0.00	7,142.0	-1,332.3	733.1	1,435,770.70	3,238,986.25	40° 31' 35.080 N	104° 38' 25.066 W	
GF S-34-33HC VP - plan hits target center - Point	0.00	0.00	7,179.0	-1,178.9	-4,401.1	1,435,874.46	3,233,850.82	40° 31' 36.592 N	104° 39' 31.554 W	
GF S-34-33HC PBHL - plan misses target center by 1.3usft at 18150.9usft MD (7215.7 TVD, -1129.3 N, -9529.5 E) - Point	0.00	0.00	7,217.0	-1,129.3	-9,529.5	1,435,874.43	3,228,722.25	40° 31' 37.067 N	104° 40' 37.967 W	