



BAYSWATER

Bayswater Exploration & Production, LLC

Pad Name: Groves Farm 34-L Pad
Well Name: GROVES FARM R-34-33HN
Ground Level: 4844.0
SHL Latitude: 40° 31' 48.392 N
SHL Longitude: 104° 38' 34.552 W

SECTION DETAILS

Sec	MD	Inc	Azi	TVD	+N/-S	+E/-W	Dleg	TFace	VSect	Target
1	0.0	0.00	0.00	0.0	0.0	0.0	0.00	0.00	0.0	
2	1500.0	0.00	0.00	1500.0	0.0	0.0	0.00	0.00	0.0	
3	2853.1	27.06	130.74	2803.3	-204.7	237.7	2.00	130.74	-216.9	
4	5253.2	27.06	130.74	4940.7	-917.3	1065.0	0.00	0.00	-971.8	
5	6606.3	0.00	271.71	6244.0	-1121.9	1302.7	2.00	180.00	-1188.7	
6	6806.3	0.00	271.71	6444.0	-1121.9	1302.7	0.00	0.00	-1188.7	
7	7703.5	89.72	271.71	7017.0	-1104.9	732.8	10.00	0.00	-623.0	GF R-34-33HN LP
8	9208.6	89.72	272.68	7024.3	-1047.3	-771.1	0.06	89.97	868.3	
9	12842.0	89.72	270.34	7042.0	-951.5	-4403.0	0.06	-90.04	4474.2	GF R-34-33HN VP
10	17967.7	89.72	270.34	7067.0	-921.3	-9528.5	0.00	0.00	9573.0	GF R-34-33HN PBHL

DESIGN TARGET DETAILS

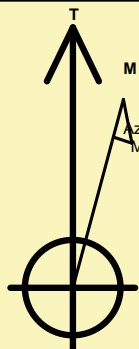
Name	TVD	+N/-S	+E/-W	Northing	Easting	Latitude	Longitude	Shape
GF R-34-33HN LP	7017.0	-1104.9	732.8	1436012.95	3238984.18	40° 31' 37.474 N	104° 38' 25.062 W	Point
GF R-34-33HN VP	- plan hits target center 7042.0	-951.5	-4403.0	1436116.70	3233847.13	40° 31' 38.986 N	104° 39' 31.572 W	Point
GF R-34-33HN PBHL	- plan hits target center 7067.0	-921.3	-9528.5	1436097.39	3228721.57	40° 31' 39.270 N	104° 40' 37.949 W	Point

REFERENCE INFORMATION

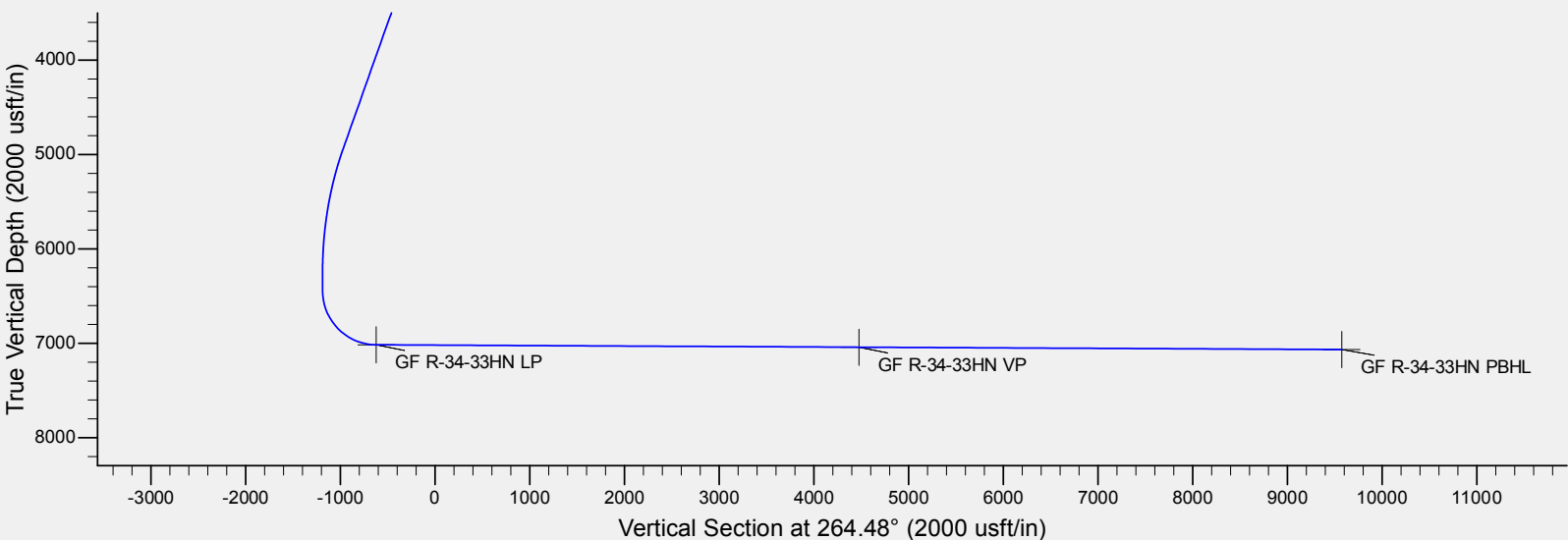
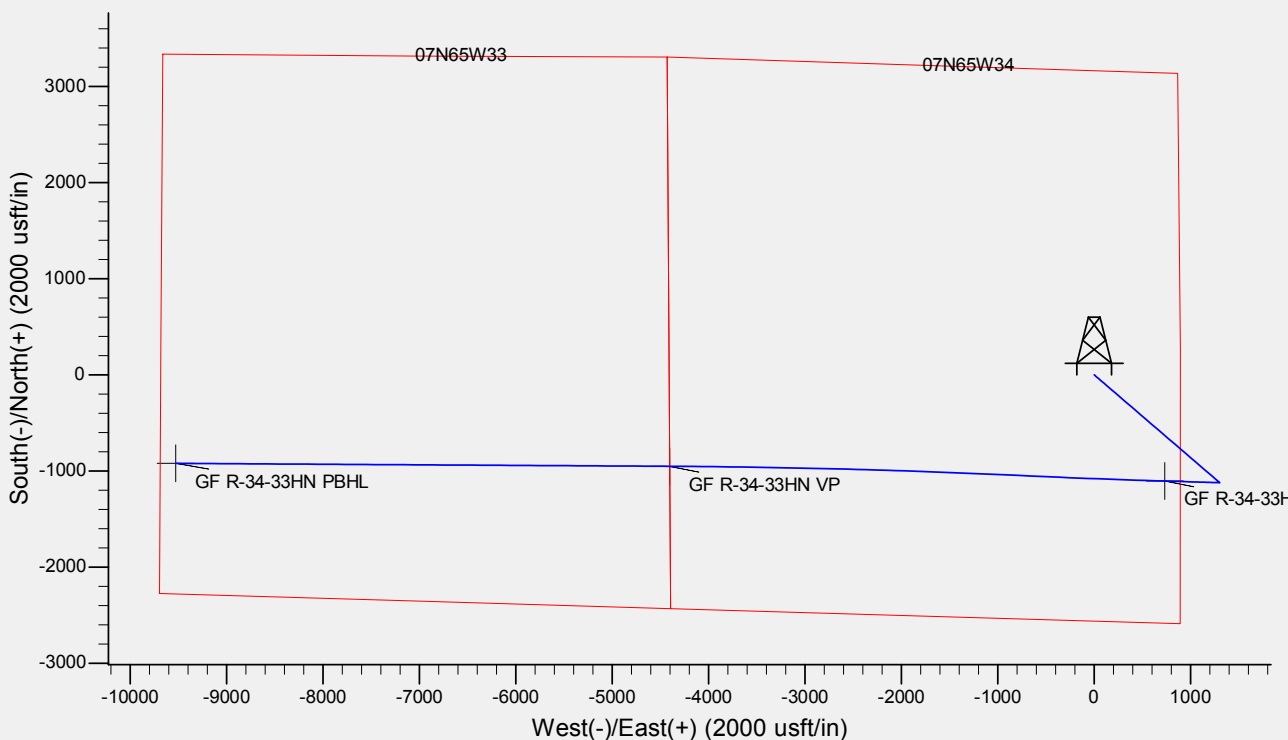
Co-ordinate (N/E) Reference: Well GROVES FARM R-34-33HN, True North
Vertical (TVD) Reference: KB @ 4867.0usft (Original Well Elev)
Section (VS) Reference: Slot - (0.0N, 0.0E)
Measured Depth Reference: KB @ 4867.0usft (Original Well Elev)
Calculation Method: Minimum Curvature

CASING DETAILS

No casing data is available



Azimuths to True North
Magnetic North: 7.81°
Magnetic Field
Strength: 52098.4nT
Dip Angle: 66.89°
Date: 9/24/2020
Model: IGRF2015





BAYSWATER

Bayswater Exploration & Production, LLC

DJ Basin

Groves Farm 34-L Pad

GROVES FARM R-34-33HN

Wellbore #1

Plan: Design #1

Standard Planning Report

26 September, 2020



Database:	EDM	Local Co-ordinate Reference:	Well GROVES FARM R-34-33HN
Company:	Bayswater Exploration & Production, LLC	TVD Reference:	KB @ 4867.0usft (Original Well Elev)
Project:	DJ Basin	MD Reference:	KB @ 4867.0usft (Original Well Elev)
Site:	Groves Farm 34-L Pad	North Reference:	True
Well:	GROVES FARM R-34-33HN	Survey Calculation Method:	Minimum Curvature
Wellbore:	Wellbore #1		
Design:	Design #1		

Project	DJ Basin, DJ Basin		
Map System:	US State Plane 1983	System Datum:	Mean Sea Level
Geo Datum:	North American Datum 1983		
Map Zone:	Colorado Northern Zone		

Site		Groves Farm 34-L Pad			
Site Position:		Northing:	1,437,185.82 usft	Latitude:	40° 31' 49.134 N
From:	Lat/Long	Easting:	3,238,241.98 usft	Longitude:	104° 38' 34.526 W
Position Uncertainty:	0.0 usft	Slot Radius:	13-3/16 "	Grid Convergence:	0.55 °

Well	GROVES FARM R-34-33HN					
Well Position	+N/-S	-75.1 usft	Northing:	1,437,110.75 usft	Latitude:	40° 31' 48.392 N
	+E/-W	-1.9 usft	Easting:	3,238,240.76 usft	Longitude:	104° 38' 34.552 W
Position Uncertainty		0.0 usft	Wellhead Elevation:		Ground Level:	4,844.0 usft

Wellbore	Wellbore #1				
Magnetics	Model Name	Sample Date	Declination (°)	Dip Angle (°)	Field Strength (nT)
	IGRF2015	9/24/2020	7.81	66.89	52,098.39534601

Design	Design #1				
Audit Notes:					
Version:		Phase:	PLAN	Tie On Depth:	0.0
Vertical Section:	Depth From (TVD) (usft)	+N/-S (usft)	+E/-W (usft)	Direction (°)	
	0.0	0.0	0.0	264.48	

Plan Survey Tool Program	Date	9/24/2020			
Depth From (usft)	Depth To (usft)	Survey (Wellbore)	Tool Name	Remarks	
1	0.0	17,967.7	Design #1 (Wellbore #1)	MWD	
				OWSG MWD - Standard	



Database:	EDM	Local Co-ordinate Reference:	Well GROVES FARM R-34-33HN
Company:	Bayswater Exploration & Production, LLC	TVD Reference:	KB @ 4867.0usft (Original Well Elev)
Project:	DJ Basin	MD Reference:	KB @ 4867.0usft (Original Well Elev)
Site:	Groves Farm 34-L Pad	North Reference:	True
Well:	GROVES FARM R-34-33HN	Survey Calculation Method:	Minimum Curvature
Wellbore:	Wellbore #1		
Design:	Design #1		

Plan Sections										
Measured Depth (usft)	Inclination (°)	Azimuth (°)	Vertical Depth (usft)	+N/-S (usft)	+E/-W (usft)	Dogleg Rate (°/100usft)	Build Rate (°/100usft)	Turn Rate (°/100usft)	TFO (°)	Target
0.0	0.00	0.00	0.0	0.0	0.0	0.00	0.00	0.00	0.00	
1,500.0	0.00	0.00	1,500.0	0.0	0.0	0.00	0.00	0.00	0.00	
2,853.1	27.06	130.74	2,803.3	-204.7	237.7	2.00	2.00	0.00	130.74	
5,253.2	27.06	130.74	4,940.7	-917.3	1,065.0	0.00	0.00	0.00	0.00	
6,606.3	0.00	271.71	6,244.0	-1,121.9	1,302.7	2.00	-2.00	0.00	180.00	
6,806.3	0.00	271.71	6,444.0	-1,121.9	1,302.7	0.00	0.00	0.00	0.00	
7,703.5	89.72	271.71	7,017.0	-1,104.9	732.8	10.00	10.00	0.00	0.00	GF R-34-33HN LP
9,208.6	89.72	272.68	7,024.3	-1,047.3	-771.1	0.06	0.00	0.06	89.97	
12,842.0	89.72	270.34	7,042.0	-951.5	-4,403.0	0.06	0.00	-0.06	-90.04	GF R-34-33HN VP
17,967.7	89.72	270.34	7,067.0	-921.3	-9,528.5	0.00	0.00	0.00	0.00	GF R-34-33HN PBHL



Database:	EDM	Local Co-ordinate Reference:	Well GROVES FARM R-34-33HN
Company:	Bayswater Exploration & Production, LLC	TVD Reference:	KB @ 4867.0usft (Original Well Elev)
Project:	DJ Basin	MD Reference:	KB @ 4867.0usft (Original Well Elev)
Site:	Groves Farm 34-L Pad	North Reference:	True
Well:	GROVES FARM R-34-33HN	Survey Calculation Method:	Minimum Curvature
Wellbore:	Wellbore #1		
Design:	Design #1		

Planned Survey									
Measured Depth (usft)	Inclination (°)	Azimuth (°)	Vertical Depth (usft)	+N/-S (usft)	+E/-W (usft)	Vertical Section (usft)	Dogleg Rate (°/100usft)	Build Rate (°/100usft)	Turn Rate (°/100usft)
0.0	0.00	0.00	0.0	0.0	0.0	0.0	0.00	0.00	0.00
100.0	0.00	0.00	100.0	0.0	0.0	0.0	0.00	0.00	0.00
200.0	0.00	0.00	200.0	0.0	0.0	0.0	0.00	0.00	0.00
300.0	0.00	0.00	300.0	0.0	0.0	0.0	0.00	0.00	0.00
400.0	0.00	0.00	400.0	0.0	0.0	0.0	0.00	0.00	0.00
500.0	0.00	0.00	500.0	0.0	0.0	0.0	0.00	0.00	0.00
600.0	0.00	0.00	600.0	0.0	0.0	0.0	0.00	0.00	0.00
700.0	0.00	0.00	700.0	0.0	0.0	0.0	0.00	0.00	0.00
800.0	0.00	0.00	800.0	0.0	0.0	0.0	0.00	0.00	0.00
900.0	0.00	0.00	900.0	0.0	0.0	0.0	0.00	0.00	0.00
1,000.0	0.00	0.00	1,000.0	0.0	0.0	0.0	0.00	0.00	0.00
1,100.0	0.00	0.00	1,100.0	0.0	0.0	0.0	0.00	0.00	0.00
1,200.0	0.00	0.00	1,200.0	0.0	0.0	0.0	0.00	0.00	0.00
1,300.0	0.00	0.00	1,300.0	0.0	0.0	0.0	0.00	0.00	0.00
1,400.0	0.00	0.00	1,400.0	0.0	0.0	0.0	0.00	0.00	0.00
1,500.0	0.00	0.00	1,500.0	0.0	0.0	0.0	0.00	0.00	0.00
1,600.0	2.00	130.74	1,600.0	-1.1	1.3	-1.2	2.00	2.00	0.00
1,700.0	4.00	130.74	1,699.8	-4.6	5.3	-4.8	2.00	2.00	0.00
1,800.0	6.00	130.74	1,799.5	-10.2	11.9	-10.9	2.00	2.00	0.00
1,900.0	8.00	130.74	1,898.7	-18.2	21.1	-19.3	2.00	2.00	0.00
2,000.0	10.00	130.74	1,997.5	-28.4	33.0	-30.1	2.00	2.00	0.00
2,100.0	12.00	130.74	2,095.6	-40.9	47.4	-43.3	2.00	2.00	0.00
2,200.0	14.00	130.74	2,193.1	-55.5	64.5	-58.8	2.00	2.00	0.00
2,300.0	16.00	130.74	2,289.6	-72.4	84.1	-76.7	2.00	2.00	0.00
2,400.0	18.00	130.74	2,385.3	-91.5	106.2	-96.9	2.00	2.00	0.00
2,500.0	20.00	130.74	2,479.8	-112.7	130.9	-119.5	2.00	2.00	0.00
2,600.0	22.00	130.74	2,573.2	-136.1	158.1	-144.2	2.00	2.00	0.00
2,700.0	24.00	130.74	2,665.2	-161.6	187.7	-171.2	2.00	2.00	0.00
2,800.0	26.00	130.74	2,755.8	-189.2	219.7	-200.5	2.00	2.00	0.00
2,853.1	27.06	130.74	2,803.3	-204.7	237.7	-216.9	2.00	2.00	0.00
2,900.0	27.06	130.74	2,845.1	-218.6	253.8	-231.6	0.00	0.00	0.00
3,000.0	27.06	130.74	2,934.2	-248.3	288.3	-263.1	0.00	0.00	0.00
3,100.0	27.06	130.74	3,023.2	-278.0	322.8	-294.5	0.00	0.00	0.00
3,200.0	27.06	130.74	3,112.3	-307.7	357.2	-326.0	0.00	0.00	0.00
3,300.0	27.06	130.74	3,201.3	-337.4	391.7	-357.4	0.00	0.00	0.00
3,400.0	27.06	130.74	3,290.4	-367.1	426.2	-388.9	0.00	0.00	0.00
3,500.0	27.06	130.74	3,379.4	-396.7	460.7	-420.3	0.00	0.00	0.00
3,600.0	27.06	130.74	3,468.5	-426.4	495.1	-451.8	0.00	0.00	0.00
3,700.0	27.06	130.74	3,557.5	-456.1	529.6	-483.2	0.00	0.00	0.00
3,800.0	27.06	130.74	3,646.6	-485.8	564.1	-514.7	0.00	0.00	0.00
3,900.0	27.06	130.74	3,735.6	-515.5	598.5	-546.2	0.00	0.00	0.00
4,000.0	27.06	130.74	3,824.7	-545.2	633.0	-577.6	0.00	0.00	0.00
4,100.0	27.06	130.74	3,913.7	-574.9	667.5	-609.1	0.00	0.00	0.00
4,200.0	27.06	130.74	4,002.8	-604.6	702.0	-640.5	0.00	0.00	0.00
4,300.0	27.06	130.74	4,091.8	-634.3	736.4	-672.0	0.00	0.00	0.00
4,400.0	27.06	130.74	4,180.9	-663.9	770.9	-703.4	0.00	0.00	0.00
4,500.0	27.06	130.74	4,269.9	-693.6	805.4	-734.9	0.00	0.00	0.00
4,600.0	27.06	130.74	4,359.0	-723.3	839.9	-766.3	0.00	0.00	0.00
4,700.0	27.06	130.74	4,448.0	-753.0	874.3	-797.8	0.00	0.00	0.00
4,800.0	27.06	130.74	4,537.1	-782.7	908.8	-829.3	0.00	0.00	0.00
4,900.0	27.06	130.74	4,626.1	-812.4	943.3	-860.7	0.00	0.00	0.00
5,000.0	27.06	130.74	4,715.2	-842.1	977.7	-892.2	0.00	0.00	0.00
5,100.0	27.06	130.74	4,804.3	-871.8	1,012.2	-923.6	0.00	0.00	0.00
5,200.0	27.06	130.74	4,893.3	-901.5	1,046.7	-955.1	0.00	0.00	0.00



Database:	EDM	Local Co-ordinate Reference:	Well GROVES FARM R-34-33HN
Company:	Bayswater Exploration & Production, LLC	TVD Reference:	KB @ 4867.0usft (Original Well Elev)
Project:	DJ Basin	MD Reference:	KB @ 4867.0usft (Original Well Elev)
Site:	Groves Farm 34-L Pad	North Reference:	True
Well:	GROVES FARM R-34-33HN	Survey Calculation Method:	Minimum Curvature
Wellbore:	Wellbore #1		
Design:	Design #1		

Planned Survey									
Measured Depth (usft)	Inclination (°)	Azimuth (°)	Vertical Depth (usft)	+N/-S (usft)	+E/-W (usft)	Vertical Section (usft)	Dogleg Rate (°/100usft)	Build Rate (°/100usft)	Turn Rate (°/100usft)
5,253.2	27.06	130.74	4,940.7	-917.3	1,065.0	-971.8	0.00	0.00	0.00
5,300.0	26.13	130.74	4,982.5	-930.9	1,080.9	-986.3	2.00	-2.00	0.00
5,400.0	24.13	130.74	5,073.1	-958.6	1,113.1	-1,015.6	2.00	-2.00	0.00
5,500.0	22.13	130.74	5,165.0	-984.3	1,142.8	-1,042.8	2.00	-2.00	0.00
5,600.0	20.13	130.74	5,258.3	-1,007.8	1,170.1	-1,067.7	2.00	-2.00	0.00
5,700.0	18.13	130.74	5,352.8	-1,029.2	1,195.0	-1,090.4	2.00	-2.00	0.00
5,800.0	16.13	130.74	5,448.3	-1,048.4	1,217.3	-1,110.7	2.00	-2.00	0.00
5,900.0	14.13	130.74	5,544.9	-1,065.4	1,237.0	-1,128.8	2.00	-2.00	0.00
6,000.0	12.13	130.74	5,642.2	-1,080.2	1,254.3	-1,144.5	2.00	-2.00	0.00
6,100.0	10.13	130.74	5,740.4	-1,092.8	1,268.9	-1,157.8	2.00	-2.00	0.00
6,200.0	8.13	130.74	5,839.1	-1,103.2	1,280.9	-1,168.8	2.00	-2.00	0.00
6,300.0	6.13	130.74	5,938.3	-1,111.3	1,290.3	-1,177.4	2.00	-2.00	0.00
6,400.0	4.13	130.74	6,037.9	-1,117.1	1,297.1	-1,183.5	2.00	-2.00	0.00
6,500.0	2.13	130.74	6,137.7	-1,120.7	1,301.2	-1,187.3	2.00	-2.00	0.00
6,600.0	0.13	130.74	6,237.7	-1,121.9	1,302.7	-1,188.7	2.00	-2.00	0.00
6,606.3	0.00	271.71	6,244.0	-1,121.9	1,302.7	-1,188.7	2.00	-2.00	0.00
6,700.0	0.00	0.00	6,337.7	-1,121.9	1,302.7	-1,188.7	0.00	0.00	0.00
6,800.0	0.00	0.00	6,437.7	-1,121.9	1,302.7	-1,188.7	0.00	0.00	0.00
6,806.3	0.00	271.71	6,444.0	-1,121.9	1,302.7	-1,188.7	0.00	0.00	0.00
6,900.0	9.37	271.71	6,537.3	-1,121.7	1,295.1	-1,181.1	10.00	10.00	0.00
7,000.0	19.37	271.71	6,634.1	-1,121.0	1,270.3	-1,156.5	10.00	10.00	0.00
7,100.0	29.37	271.71	6,725.0	-1,119.8	1,229.1	-1,115.6	10.00	10.00	0.00
7,200.0	39.37	271.71	6,807.5	-1,118.1	1,172.7	-1,059.7	10.00	10.00	0.00
7,300.0	49.37	271.71	6,878.9	-1,116.0	1,102.9	-990.4	10.00	10.00	0.00
7,400.0	59.37	271.71	6,937.1	-1,113.6	1,021.8	-909.9	10.00	10.00	0.00
7,500.0	69.37	271.71	6,980.3	-1,110.9	931.8	-820.6	10.00	10.00	0.00
7,600.0	79.37	271.71	7,007.2	-1,108.0	835.7	-725.1	10.00	10.00	0.00
7,700.0	89.37	271.71	7,017.0	-1,105.0	736.3	-626.5	10.00	10.00	0.00
7,703.5	89.72	271.71	7,017.0	-1,104.9	732.8	-623.0	10.00	10.00	0.00
GF R-34-33HN LP									
7,800.0	89.72	271.77	7,017.5	-1,102.0	636.4	-527.3	0.06	0.00	0.06
7,900.0	89.72	271.84	7,018.0	-1,098.8	536.4	-428.2	0.06	0.00	0.06
8,000.0	89.72	271.90	7,018.4	-1,095.6	436.5	-329.0	0.06	0.00	0.06
8,100.0	89.72	271.97	7,018.9	-1,092.2	336.5	-229.8	0.06	0.00	0.06
8,200.0	89.72	272.03	7,019.4	-1,088.7	236.6	-130.7	0.06	0.00	0.06
8,300.0	89.72	272.10	7,019.9	-1,085.1	136.7	-31.6	0.06	0.00	0.06
8,400.0	89.72	272.16	7,020.4	-1,081.4	36.7	67.5	0.06	0.00	0.06
8,500.0	89.72	272.22	7,020.9	-1,077.6	-63.2	166.6	0.06	0.00	0.06
8,600.0	89.72	272.29	7,021.4	-1,073.6	-163.1	265.7	0.06	0.00	0.06
8,700.0	89.72	272.35	7,021.8	-1,069.6	-263.0	364.8	0.06	0.00	0.06
8,800.0	89.72	272.42	7,022.3	-1,065.4	-363.0	463.8	0.06	0.00	0.06
8,900.0	89.72	272.48	7,022.8	-1,061.2	-462.9	562.8	0.06	0.00	0.06
9,000.0	89.72	272.55	7,023.3	-1,056.8	-562.8	661.9	0.06	0.00	0.06
9,100.0	89.72	272.61	7,023.8	-1,052.3	-662.7	760.9	0.06	0.00	0.06
9,200.0	89.72	272.68	7,024.3	-1,047.7	-762.6	859.8	0.06	0.00	0.06
9,208.6	89.72	272.68	7,024.3	-1,047.3	-771.1	868.3	0.06	0.00	0.06
9,300.0	89.72	272.62	7,024.8	-1,043.0	-862.4	958.8	0.06	0.00	-0.06
9,400.0	89.72	272.56	7,025.2	-1,038.5	-962.3	1,057.8	0.06	0.00	-0.06
9,500.0	89.72	272.49	7,025.7	-1,034.1	-1,062.2	1,156.8	0.06	0.00	-0.06
9,600.0	89.72	272.43	7,026.2	-1,029.8	-1,162.2	1,255.9	0.06	0.00	-0.06
9,700.0	89.72	272.36	7,026.7	-1,025.6	-1,262.1	1,354.9	0.06	0.00	-0.06
9,800.0	89.72	272.30	7,027.2	-1,021.6	-1,362.0	1,454.0	0.06	0.00	-0.06
9,900.0	89.72	272.24	7,027.7	-1,017.6	-1,461.9	1,553.0	0.06	0.00	-0.06



Database:	EDM	Local Co-ordinate Reference:	Well GROVES FARM R-34-33HN
Company:	Bayswater Exploration & Production, LLC	TVD Reference:	KB @ 4867.0usft (Original Well Elev)
Project:	DJ Basin	MD Reference:	KB @ 4867.0usft (Original Well Elev)
Site:	Groves Farm 34-L Pad	North Reference:	True
Well:	GROVES FARM R-34-33HN	Survey Calculation Method:	Minimum Curvature
Wellbore:	Wellbore #1		
Design:	Design #1		

Planned Survey									
Measured Depth (usft)	Inclination (°)	Azimuth (°)	Vertical Depth (usft)	+N/-S (usft)	+E/-W (usft)	Vertical Section (usft)	Dogleg Rate (°/100usft)	Build Rate (°/100usft)	Turn Rate (°/100usft)
10,000.0	89.72	272.17	7,028.2	-1,013.8	-1,561.8	1,652.1	0.06	0.00	-0.06
10,100.0	89.72	272.11	7,028.6	-1,010.0	-1,661.8	1,751.2	0.06	0.00	-0.06
10,200.0	89.72	272.04	7,029.1	-1,006.4	-1,761.7	1,850.4	0.06	0.00	-0.06
10,300.0	89.72	271.98	7,029.6	-1,002.9	-1,861.6	1,949.5	0.06	0.00	-0.06
10,400.0	89.72	271.91	7,030.1	-999.5	-1,961.6	2,048.7	0.06	0.00	-0.06
10,500.0	89.72	271.85	7,030.6	-996.2	-2,061.5	2,147.8	0.06	0.00	-0.06
10,600.0	89.72	271.78	7,031.1	-993.0	-2,161.5	2,247.0	0.06	0.00	-0.06
10,700.0	89.72	271.72	7,031.6	-990.0	-2,261.4	2,346.2	0.06	0.00	-0.06
10,800.0	89.72	271.66	7,032.1	-987.0	-2,361.4	2,445.4	0.06	0.00	-0.06
10,900.0	89.72	271.59	7,032.5	-984.2	-2,461.3	2,544.6	0.06	0.00	-0.06
11,000.0	89.72	271.53	7,033.0	-981.5	-2,561.3	2,643.9	0.06	0.00	-0.06
11,100.0	89.72	271.46	7,033.5	-978.9	-2,661.3	2,743.1	0.06	0.00	-0.06
11,200.0	89.72	271.40	7,034.0	-976.4	-2,761.2	2,842.4	0.06	0.00	-0.06
11,300.0	89.72	271.33	7,034.5	-974.0	-2,861.2	2,941.6	0.06	0.00	-0.06
11,400.0	89.72	271.27	7,035.0	-971.7	-2,961.2	3,040.9	0.06	0.00	-0.06
11,500.0	89.72	271.20	7,035.5	-969.6	-3,061.1	3,140.2	0.06	0.00	-0.06
11,600.0	89.72	271.14	7,035.9	-967.5	-3,161.1	3,239.6	0.06	0.00	-0.06
11,700.0	89.72	271.07	7,036.4	-965.6	-3,261.1	3,338.9	0.06	0.00	-0.06
11,800.0	89.72	271.01	7,036.9	-963.8	-3,361.1	3,438.2	0.06	0.00	-0.06
11,900.0	89.72	270.95	7,037.4	-962.1	-3,461.1	3,537.6	0.06	0.00	-0.06
12,000.0	89.72	270.88	7,037.9	-960.5	-3,561.0	3,637.0	0.06	0.00	-0.06
12,100.0	89.72	270.82	7,038.4	-959.0	-3,661.0	3,736.3	0.06	0.00	-0.06
12,200.0	89.72	270.75	7,038.9	-957.6	-3,761.0	3,835.7	0.06	0.00	-0.06
12,300.0	89.72	270.69	7,039.4	-956.4	-3,861.0	3,935.1	0.06	0.00	-0.06
12,400.0	89.72	270.62	7,039.8	-955.2	-3,961.0	4,034.6	0.06	0.00	-0.06
12,500.0	89.72	270.56	7,040.3	-954.2	-4,061.0	4,134.0	0.06	0.00	-0.06
12,600.0	89.72	270.49	7,040.8	-953.3	-4,161.0	4,233.4	0.06	0.00	-0.06
12,700.0	89.72	270.43	7,041.3	-952.5	-4,261.0	4,332.9	0.06	0.00	-0.06
12,800.0	89.72	270.37	7,041.8	-951.8	-4,361.0	4,432.3	0.06	0.00	-0.06
12,842.0	89.72	270.34	7,042.0	-951.5	-4,403.0	4,474.2	0.06	0.00	-0.06
GF R-34-33HN VP									
12,900.0	89.72	270.34	7,042.3	-951.2	-4,461.0	4,531.8	0.00	0.00	0.00
13,000.0	89.72	270.34	7,042.8	-950.6	-4,561.0	4,631.3	0.00	0.00	0.00
13,100.0	89.72	270.34	7,043.3	-950.0	-4,661.0	4,730.8	0.00	0.00	0.00
13,200.0	89.72	270.34	7,043.7	-949.4	-4,761.0	4,830.3	0.00	0.00	0.00
13,300.0	89.72	270.34	7,044.2	-948.8	-4,861.0	4,929.7	0.00	0.00	0.00
13,400.0	89.72	270.34	7,044.7	-948.2	-4,961.0	5,029.2	0.00	0.00	0.00
13,500.0	89.72	270.34	7,045.2	-947.7	-5,061.0	5,128.7	0.00	0.00	0.00
13,600.0	89.72	270.34	7,045.7	-947.1	-5,161.0	5,228.2	0.00	0.00	0.00
13,700.0	89.72	270.34	7,046.2	-946.5	-5,261.0	5,327.6	0.00	0.00	0.00
13,800.0	89.72	270.34	7,046.7	-945.9	-5,361.0	5,427.1	0.00	0.00	0.00
13,900.0	89.72	270.34	7,047.2	-945.3	-5,461.0	5,526.6	0.00	0.00	0.00
14,000.0	89.72	270.34	7,047.6	-944.7	-5,561.0	5,626.1	0.00	0.00	0.00
14,100.0	89.72	270.34	7,048.1	-944.1	-5,661.0	5,725.5	0.00	0.00	0.00
14,200.0	89.72	270.34	7,048.6	-943.5	-5,760.9	5,825.0	0.00	0.00	0.00
14,300.0	89.72	270.34	7,049.1	-942.9	-5,860.9	5,924.5	0.00	0.00	0.00
14,400.0	89.72	270.34	7,049.6	-942.3	-5,960.9	6,024.0	0.00	0.00	0.00
14,500.0	89.72	270.34	7,050.1	-941.8	-6,060.9	6,123.4	0.00	0.00	0.00
14,600.0	89.72	270.34	7,050.6	-941.2	-6,160.9	6,222.9	0.00	0.00	0.00
14,700.0	89.72	270.34	7,051.1	-940.6	-6,260.9	6,322.4	0.00	0.00	0.00
14,800.0	89.72	270.34	7,051.5	-940.0	-6,360.9	6,421.9	0.00	0.00	0.00
14,900.0	89.72	270.34	7,052.0	-939.4	-6,460.9	6,521.3	0.00	0.00	0.00
15,000.0	89.72	270.34	7,052.5	-938.8	-6,560.9	6,620.8	0.00	0.00	0.00
15,100.0	89.72	270.34	7,053.0	-938.2	-6,660.9	6,720.3	0.00	0.00	0.00



Database:	EDM	Local Co-ordinate Reference:	Well GROVES FARM R-34-33HN
Company:	Bayswater Exploration & Production, LLC	TVD Reference:	KB @ 4867.0usft (Original Well Elev)
Project:	DJ Basin	MD Reference:	KB @ 4867.0usft (Original Well Elev)
Site:	Groves Farm 34-L Pad	North Reference:	True
Well:	GROVES FARM R-34-33HN	Survey Calculation Method:	Minimum Curvature
Wellbore:	Wellbore #1		
Design:	Design #1		

Planned Survey										
Measured Depth (usft)	Inclination (°)	Azimuth (°)	Vertical Depth (usft)	+N/-S (usft)	+E/-W (usft)	Vertical Section (usft)	Dogleg Rate (°/100usft)	Build Rate (°/100usft)	Turn Rate (°/100usft)	
15,200.0	89.72	270.34	7,053.5	-937.6	-6,760.9	6,819.8	0.00	0.00	0.00	
15,300.0	89.72	270.34	7,054.0	-937.0	-6,860.9	6,919.2	0.00	0.00	0.00	
15,400.0	89.72	270.34	7,054.5	-936.5	-6,960.9	7,018.7	0.00	0.00	0.00	
15,500.0	89.72	270.34	7,055.0	-935.9	-7,060.9	7,118.2	0.00	0.00	0.00	
15,600.0	89.72	270.34	7,055.5	-935.3	-7,160.9	7,217.7	0.00	0.00	0.00	
15,700.0	89.72	270.34	7,055.9	-934.7	-7,260.9	7,317.2	0.00	0.00	0.00	
15,800.0	89.72	270.34	7,056.4	-934.1	-7,360.9	7,416.6	0.00	0.00	0.00	
15,900.0	89.72	270.34	7,056.9	-933.5	-7,460.9	7,516.1	0.00	0.00	0.00	
16,000.0	89.72	270.34	7,057.4	-932.9	-7,560.9	7,615.6	0.00	0.00	0.00	
16,100.0	89.72	270.34	7,057.9	-932.3	-7,660.9	7,715.1	0.00	0.00	0.00	
16,200.0	89.72	270.34	7,058.4	-931.7	-7,760.9	7,814.5	0.00	0.00	0.00	
16,300.0	89.72	270.34	7,058.9	-931.1	-7,860.9	7,914.0	0.00	0.00	0.00	
16,400.0	89.72	270.34	7,059.4	-930.6	-7,960.9	8,013.5	0.00	0.00	0.00	
16,500.0	89.72	270.34	7,059.8	-930.0	-8,060.9	8,113.0	0.00	0.00	0.00	
16,600.0	89.72	270.34	7,060.3	-929.4	-8,160.9	8,212.4	0.00	0.00	0.00	
16,700.0	89.72	270.34	7,060.8	-928.8	-8,260.9	8,311.9	0.00	0.00	0.00	
16,800.0	89.72	270.34	7,061.3	-928.2	-8,360.9	8,411.4	0.00	0.00	0.00	
16,900.0	89.72	270.34	7,061.8	-927.6	-8,460.9	8,510.9	0.00	0.00	0.00	
17,000.0	89.72	270.34	7,062.3	-927.0	-8,560.9	8,610.3	0.00	0.00	0.00	
17,100.0	89.72	270.34	7,062.8	-926.4	-8,660.9	8,709.8	0.00	0.00	0.00	
17,200.0	89.72	270.34	7,063.3	-925.8	-8,760.9	8,809.3	0.00	0.00	0.00	
17,300.0	89.72	270.34	7,063.7	-925.2	-8,860.9	8,908.8	0.00	0.00	0.00	
17,400.0	89.72	270.34	7,064.2	-924.7	-8,960.9	9,008.2	0.00	0.00	0.00	
17,500.0	89.72	270.34	7,064.7	-924.1	-9,060.9	9,107.7	0.00	0.00	0.00	
17,600.0	89.72	270.34	7,065.2	-923.5	-9,160.8	9,207.2	0.00	0.00	0.00	
17,700.0	89.72	270.34	7,065.7	-922.9	-9,260.8	9,306.7	0.00	0.00	0.00	
17,800.0	89.72	270.34	7,066.2	-922.3	-9,360.8	9,406.2	0.00	0.00	0.00	
17,900.0	89.72	270.34	7,066.7	-921.7	-9,460.8	9,505.6	0.00	0.00	0.00	
17,967.7	89.72	270.34	7,067.0	-921.3	-9,528.5	9,573.0	0.00	0.00	0.00	
GF R-34-33HN PBHL										

Design Targets										
Target Name	Dip Angle (°)	Dip Dir. (°)	TVD (usft)	+N/-S (usft)	+E/-W (usft)	Northing (usft)	Easting (usft)	Latitude	Longitude	
GF R-34-33HN LP - hit/miss target - Shape - Point	0.00	0.00	7,017.0	-1,104.9	732.8	1,436,012.95	3,238,984.18	40° 31' 37.474 N	104° 38' 25.062 W	
GF R-34-33HN VP - plan hits target center - Point	0.00	0.00	7,042.0	-951.5	-4,403.0	1,436,116.70	3,233,847.13	40° 31' 38.986 N	104° 39' 31.572 W	
GF R-34-33HN PBHL - plan hits target center - Point	0.00	0.00	7,067.0	-921.3	-9,528.5	1,436,097.39	3,228,721.58	40° 31' 39.270 N	104° 40' 37.949 W	