

SECTION DETAILS

Sec	MD	Inc	Azi	TVD	+N/-S	+E/-W	Dleg	TFace	VSect	Target
1	0.0	0.00	0.00	0.0	0.0	0.0	0.00	0.00	0.0	
2	1500.0	0.00	0.00	1500.0	0.0	0.0	0.00	0.00	0.0	
3	2193.2	13.86	100.78	2186.4	-15.6	82.0	2.00	100.78	-81.8	
4	5717.0	13.86	100.78	5607.6	-173.5	911.4	0.00	0.00	-909.6	
5	6410.2	0.00	270.51	6294.0	-189.1	993.4	2.00	180.00	-991.4	
6	6610.2	0.00	270.51	6494.0	-189.1	993.4	0.00	0.00	-991.4	
7	7508.7	89.85	270.51	7067.0	-184.0	422.0	10.00	0.00	-420.0	GF N-34-33HN LP
8	7571.3	89.85	271.77	7067.2	-182.7	359.4	2.00	90.20	-357.4	
9	12219.7	89.85	271.77	7079.6	-39.4	-4286.7	0.00	0.00	4286.9	
10	12343.3	89.86	269.29	7079.9	-38.2	-4410.4	2.00	-89.80	4410.5	GF N-34-33HN VP
11	17148.5	89.86	269.29	7092.0	-97.4	-9215.2	0.00	0.00	9215.7	GF N-34-33HN PBHL

DESIGN TARGET DETAILS

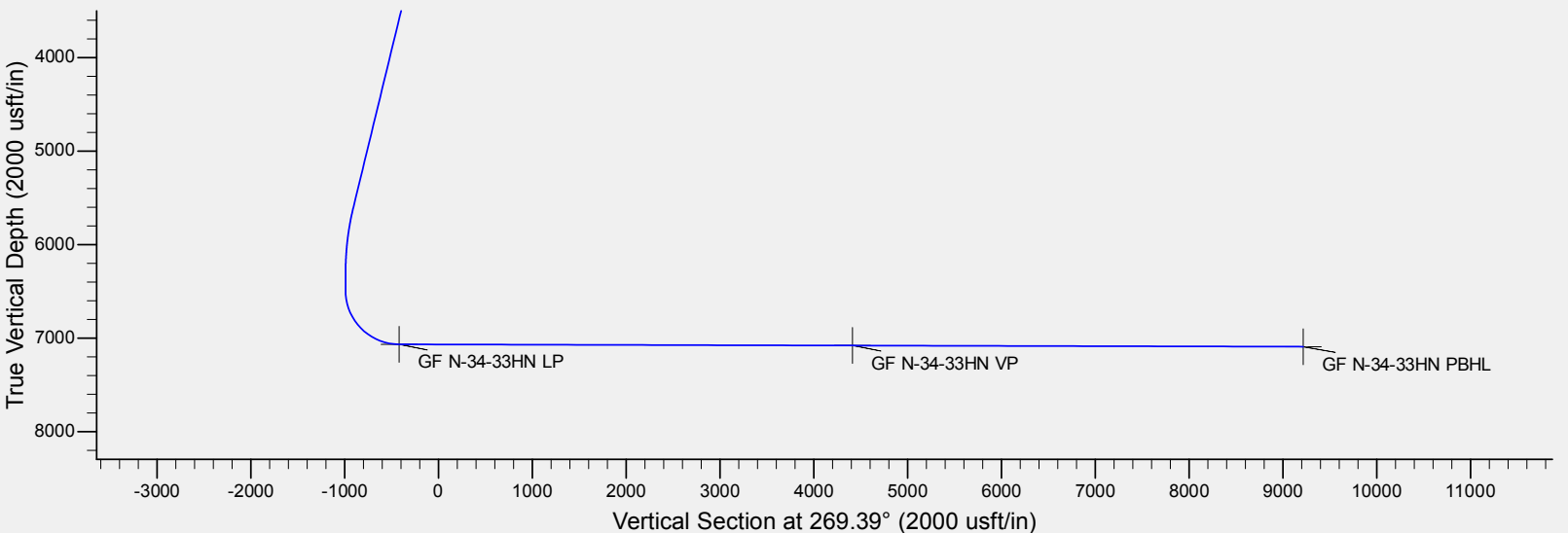
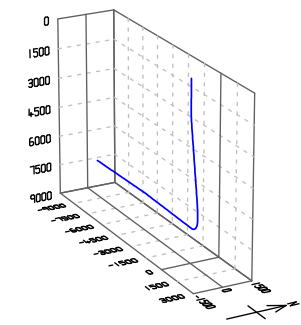
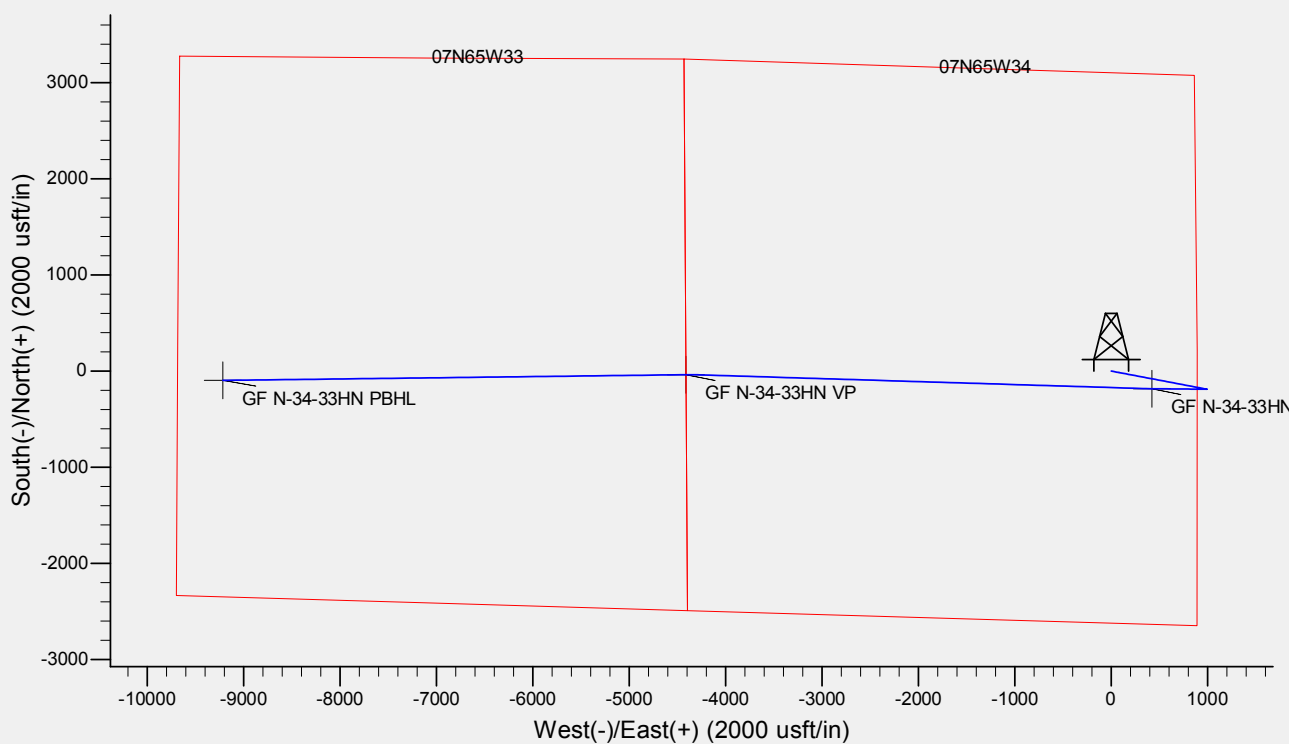
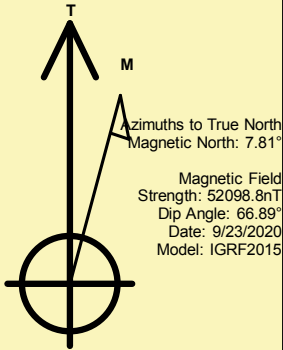
Name	TVD	+N/-S	+E/-W	Northing	Easting	Latitude	Longitude	Shape
GF N-34-33HN LP	7067.0	-184.0	422.0	1436990.99	3238665.29	40° 31' 47.168 N	104° 38' 29.069 W	Point
GF N-34-33HN VP	- plan hits target center 7079.9	-38.2	-4410.4	1437090.03	3233831.78	40° 31' 48.605 N	104° 39' 31.651 W	Point
GF N-34-33HN PBHL	- plan hits target center 7092.0	-97.4	-9215.2	1436984.44	3229027.75	40° 31' 48.007 N	104° 40' 33.877 W	Point

REFERENCE INFORMATION

Co-ordinate (N/E) Reference: Well GROVES FARM N-34-33HN, True North
Vertical (TVD) Reference: KB @ 4867.0usft (Original Well Elev)
Section (VS) Reference: Slot - (0.0N, 0.0E)
Measured Depth Reference: KB @ 4867.0usft (Original Well Elev)
Calculation Method: Minimum Curvature

CASING DETAILS

No casing data is available





BAYSWATER

Bayswater Exploration & Production, LLC

DJ Basin

Groves Farm 34-L Pad

GROVES FARM N-34-33HN

Wellbore #1

Plan: Design #1

Standard Planning Report

25 September, 2020



Database:	EDM	Local Co-ordinate Reference:	Well GROVES FARM N-34-33HN
Company:	Bayswater Exploration & Production, LLC	TVD Reference:	KB @ 4867.0usft (Original Well Elev)
Project:	DJ Basin	MD Reference:	KB @ 4867.0usft (Original Well Elev)
Site:	Groves Farm 34-L Pad	North Reference:	True
Well:	GROVES FARM N-34-33HN	Survey Calculation Method:	Minimum Curvature
Wellbore:	Wellbore #1		
Design:	Design #1		

Project	DJ Basin, DJ Basin		
Map System:	US State Plane 1983	System Datum:	Mean Sea Level
Geo Datum:	North American Datum 1983		
Map Zone:	Colorado Northern Zone		

Site	Groves Farm 34-L Pad				
Site Position:		Northing:	1,437,185.82 usft	Latitude:	40° 31' 49.134 N
From:	Lat/Long	Easting:	3,238,241.98 usft	Longitude:	104° 38' 34.526 W
Position Uncertainty:	0.0 usft	Slot Radius:	13-3/16 "	Grid Convergence:	0.55 °

Well	GROVES FARM N-34-33HN					
Well Position	+N/-S	-14.9 usft	Northing:	1,437,170.87 usft	Latitude:	40° 31' 48.986 N
	+E/-W	-0.6 usft	Easting:	3,238,241.57 usft	Longitude:	104° 38' 34.534 W
Position Uncertainty		0.0 usft	Wellhead Elevation:		Ground Level:	4,844.0 usft

Wellbore	Wellbore #1				
Magnetics	Model Name	Sample Date	Declination (°)	Dip Angle (°)	Field Strength (nT)
	IGRF2015	9/23/2020	7.81	66.89	52,098.79086498

Design	Design #1			
Audit Notes:				
Version:	Phase:	PLAN	Tie On Depth:	0.0
Vertical Section:	Depth From (TVD) (usft)	+N/-S (usft)	+E/-W (usft)	Direction (°)
	0.0	0.0	0.0	269.39

Plan Survey Tool Program	Date	9/23/2020		
Depth From (usft)	Depth To (usft)	Survey (Wellbore)	Tool Name	Remarks
1	0.0	17,147.9	Design #1 (Wellbore #1)	MWD
				OWSG MWD - Standard



Database:	EDM	Local Co-ordinate Reference:	Well GROVES FARM N-34-33HN
Company:	Bayswater Exploration & Production, LLC	TVD Reference:	KB @ 4867.0usft (Original Well Elev)
Project:	DJ Basin	MD Reference:	KB @ 4867.0usft (Original Well Elev)
Site:	Groves Farm 34-L Pad	North Reference:	True
Well:	GROVES FARM N-34-33HN	Survey Calculation Method:	Minimum Curvature
Wellbore:	Wellbore #1		
Design:	Design #1		

Plan Sections										
Measured Depth (usft)	Inclination (°)	Azimuth (°)	Vertical Depth (usft)	+N/-S (usft)	+E/-W (usft)	Dogleg Rate (°/100usft)	Build Rate (°/100usft)	Turn Rate (°/100usft)	TFO (°)	Target
0.0	0.00	0.00	0.0	0.0	0.0	0.00	0.00	0.00	0.00	
1,500.0	0.00	0.00	1,500.0	0.0	0.0	0.00	0.00	0.00	0.00	
2,193.2	13.86	100.78	2,186.4	-15.6	82.0	2.00	2.00	0.00	100.78	
5,717.0	13.86	100.78	5,607.6	-173.5	911.4	0.00	0.00	0.00	0.00	
6,410.2	0.00	270.51	6,294.0	-189.1	993.4	2.00	-2.00	0.00	180.00	
6,610.2	0.00	270.51	6,494.0	-189.1	993.4	0.00	0.00	0.00	0.00	
7,508.7	89.85	270.51	7,067.0	-184.0	422.0	10.00	10.00	0.00	0.00	GF N-34-33HN LP
7,571.3	89.85	271.77	7,067.2	-182.7	359.4	2.00	-0.01	2.00	90.20	
12,219.7	89.85	271.77	7,079.6	-39.4	-4,286.7	0.00	0.00	0.00	0.00	
12,343.3	89.86	269.29	7,079.9	-38.2	-4,410.4	2.00	0.01	-2.00	-89.80	GF N-34-33HN VP
17,148.5	89.86	269.29	7,092.0	-97.4	-9,215.2	0.00	0.00	0.00	0.00	GF N-34-33HN PBHL



Database:	EDM	Local Co-ordinate Reference:	Well GROVES FARM N-34-33HN
Company:	Bayswater Exploration & Production, LLC	TVD Reference:	KB @ 4867.0usft (Original Well Elev)
Project:	DJ Basin	MD Reference:	KB @ 4867.0usft (Original Well Elev)
Site:	Groves Farm 34-L Pad	North Reference:	True
Well:	GROVES FARM N-34-33HN	Survey Calculation Method:	Minimum Curvature
Wellbore:	Wellbore #1		
Design:	Design #1		

Planned Survey									
Measured Depth (usft)	Inclination (°)	Azimuth (°)	Vertical Depth (usft)	+N/-S (usft)	+E/-W (usft)	Vertical Section (usft)	Dogleg Rate (°/100usft)	Build Rate (°/100usft)	Turn Rate (°/100usft)
0.0	0.00	0.00	0.0	0.0	0.0	0.0	0.00	0.00	0.00
100.0	0.00	0.00	100.0	0.0	0.0	0.0	0.00	0.00	0.00
200.0	0.00	0.00	200.0	0.0	0.0	0.0	0.00	0.00	0.00
300.0	0.00	0.00	300.0	0.0	0.0	0.0	0.00	0.00	0.00
400.0	0.00	0.00	400.0	0.0	0.0	0.0	0.00	0.00	0.00
500.0	0.00	0.00	500.0	0.0	0.0	0.0	0.00	0.00	0.00
600.0	0.00	0.00	600.0	0.0	0.0	0.0	0.00	0.00	0.00
700.0	0.00	0.00	700.0	0.0	0.0	0.0	0.00	0.00	0.00
800.0	0.00	0.00	800.0	0.0	0.0	0.0	0.00	0.00	0.00
900.0	0.00	0.00	900.0	0.0	0.0	0.0	0.00	0.00	0.00
1,000.0	0.00	0.00	1,000.0	0.0	0.0	0.0	0.00	0.00	0.00
1,100.0	0.00	0.00	1,100.0	0.0	0.0	0.0	0.00	0.00	0.00
1,200.0	0.00	0.00	1,200.0	0.0	0.0	0.0	0.00	0.00	0.00
1,300.0	0.00	0.00	1,300.0	0.0	0.0	0.0	0.00	0.00	0.00
1,400.0	0.00	0.00	1,400.0	0.0	0.0	0.0	0.00	0.00	0.00
1,500.0	0.00	0.00	1,500.0	0.0	0.0	0.0	0.00	0.00	0.00
1,600.0	2.00	100.78	1,600.0	-0.3	1.7	-1.7	2.00	2.00	0.00
1,700.0	4.00	100.78	1,699.8	-1.3	6.9	-6.8	2.00	2.00	0.00
1,800.0	6.00	100.78	1,799.5	-2.9	15.4	-15.4	2.00	2.00	0.00
1,900.0	8.00	100.78	1,898.7	-5.2	27.4	-27.3	2.00	2.00	0.00
2,000.0	10.00	100.78	1,997.5	-8.1	42.8	-42.7	2.00	2.00	0.00
2,100.0	12.00	100.78	2,095.6	-11.7	61.5	-61.4	2.00	2.00	0.00
2,193.2	13.86	100.78	2,186.4	-15.6	82.0	-81.8	2.00	2.00	0.00
2,200.0	13.86	100.78	2,193.1	-15.9	83.6	-83.4	0.00	0.00	0.00
2,300.0	13.86	100.78	2,290.1	-20.4	107.1	-106.9	0.00	0.00	0.00
2,400.0	13.86	100.78	2,387.2	-24.9	130.7	-130.4	0.00	0.00	0.00
2,500.0	13.86	100.78	2,484.3	-29.4	154.2	-153.9	0.00	0.00	0.00
2,600.0	13.86	100.78	2,581.4	-33.8	177.7	-177.4	0.00	0.00	0.00
2,700.0	13.86	100.78	2,678.5	-38.3	201.3	-200.9	0.00	0.00	0.00
2,800.0	13.86	100.78	2,775.6	-42.8	224.8	-224.4	0.00	0.00	0.00
2,900.0	13.86	100.78	2,872.7	-47.3	248.4	-247.8	0.00	0.00	0.00
3,000.0	13.86	100.78	2,969.8	-51.8	271.9	-271.3	0.00	0.00	0.00
3,100.0	13.86	100.78	3,066.8	-56.2	295.4	-294.8	0.00	0.00	0.00
3,200.0	13.86	100.78	3,163.9	-60.7	319.0	-318.3	0.00	0.00	0.00
3,300.0	13.86	100.78	3,261.0	-65.2	342.5	-341.8	0.00	0.00	0.00
3,400.0	13.86	100.78	3,358.1	-69.7	366.0	-365.3	0.00	0.00	0.00
3,500.0	13.86	100.78	3,455.2	-74.2	389.6	-388.8	0.00	0.00	0.00
3,600.0	13.86	100.78	3,552.3	-78.6	413.1	-412.3	0.00	0.00	0.00
3,700.0	13.86	100.78	3,649.4	-83.1	436.7	-435.8	0.00	0.00	0.00
3,800.0	13.86	100.78	3,746.4	-87.6	460.2	-459.3	0.00	0.00	0.00
3,900.0	13.86	100.78	3,843.5	-92.1	483.7	-482.7	0.00	0.00	0.00
4,000.0	13.86	100.78	3,940.6	-96.6	507.3	-506.2	0.00	0.00	0.00
4,100.0	13.86	100.78	4,037.7	-101.0	530.8	-529.7	0.00	0.00	0.00
4,200.0	13.86	100.78	4,134.8	-105.5	554.4	-553.2	0.00	0.00	0.00
4,300.0	13.86	100.78	4,231.9	-110.0	577.9	-576.7	0.00	0.00	0.00
4,400.0	13.86	100.78	4,329.0	-114.5	601.4	-600.2	0.00	0.00	0.00
4,500.0	13.86	100.78	4,426.1	-119.0	625.0	-623.7	0.00	0.00	0.00
4,600.0	13.86	100.78	4,523.1	-123.4	648.5	-647.2	0.00	0.00	0.00
4,700.0	13.86	100.78	4,620.2	-127.9	672.0	-670.7	0.00	0.00	0.00
4,800.0	13.86	100.78	4,717.3	-132.4	695.6	-694.1	0.00	0.00	0.00
4,900.0	13.86	100.78	4,814.4	-136.9	719.1	-717.6	0.00	0.00	0.00
5,000.0	13.86	100.78	4,911.5	-141.4	742.7	-741.1	0.00	0.00	0.00
5,100.0	13.86	100.78	5,008.6	-145.8	766.2	-764.6	0.00	0.00	0.00
5,200.0	13.86	100.78	5,105.7	-150.3	789.7	-788.1	0.00	0.00	0.00



Database:	EDM	Local Co-ordinate Reference:	Well GROVES FARM N-34-33HN
Company:	Bayswater Exploration & Production, LLC	TVD Reference:	KB @ 4867.0usft (Original Well Elev)
Project:	DJ Basin	MD Reference:	KB @ 4867.0usft (Original Well Elev)
Site:	Groves Farm 34-L Pad	North Reference:	True
Well:	GROVES FARM N-34-33HN	Survey Calculation Method:	Minimum Curvature
Wellbore:	Wellbore #1		
Design:	Design #1		

Planned Survey									
Measured Depth (usft)	Inclination (°)	Azimuth (°)	Vertical Depth (usft)	+N/-S (usft)	+E/-W (usft)	Vertical Section (usft)	Dogleg Rate (°/100usft)	Build Rate (°/100usft)	Turn Rate (°/100usft)
5,300.0	13.86	100.78	5,202.8	-154.8	813.3	-811.6	0.00	0.00	0.00
5,400.0	13.86	100.78	5,299.8	-159.3	836.8	-835.1	0.00	0.00	0.00
5,500.0	13.86	100.78	5,396.9	-163.8	860.4	-858.6	0.00	0.00	0.00
5,600.0	13.86	100.78	5,494.0	-168.2	883.9	-882.1	0.00	0.00	0.00
5,700.0	13.86	100.78	5,591.1	-172.7	907.4	-905.6	0.00	0.00	0.00
5,717.0	13.86	100.78	5,607.6	-173.5	911.4	-909.6	0.00	0.00	0.00
5,800.0	12.20	100.78	5,688.5	-177.0	929.8	-927.9	2.00	-2.00	0.00
5,900.0	10.20	100.78	5,786.6	-180.6	948.9	-946.9	2.00	-2.00	0.00
6,000.0	8.20	100.78	5,885.3	-183.6	964.6	-962.6	2.00	-2.00	0.00
6,100.0	6.20	100.78	5,984.5	-186.0	976.9	-974.9	2.00	-2.00	0.00
6,200.0	4.20	100.78	6,084.0	-187.7	985.8	-983.8	2.00	-2.00	0.00
6,300.0	2.20	100.78	6,183.9	-188.7	991.3	-989.3	2.00	-2.00	0.00
6,400.0	0.20	100.78	6,283.9	-189.1	993.4	-991.3	2.00	-2.00	0.00
6,410.2	0.00	270.51	6,294.0	-189.1	993.4	-991.4	2.00	-2.00	0.00
6,500.0	0.00	0.00	6,383.9	-189.1	993.4	-991.4	0.00	0.00	0.00
6,600.0	0.00	0.00	6,483.9	-189.1	993.4	-991.4	0.00	0.00	0.00
6,610.2	0.00	270.51	6,494.0	-189.1	993.4	-991.4	0.00	0.00	0.00
6,700.0	8.98	270.51	6,583.5	-189.0	986.4	-984.3	10.00	10.00	0.00
6,800.0	18.98	270.51	6,680.4	-188.8	962.3	-960.2	10.00	10.00	0.00
6,900.0	28.98	270.51	6,771.7	-188.5	921.7	-919.6	10.00	10.00	0.00
7,000.0	38.98	270.51	6,854.5	-187.9	865.9	-863.8	10.00	10.00	0.00
7,100.0	48.98	270.51	6,926.3	-187.3	796.5	-794.5	10.00	10.00	0.00
7,200.0	58.98	270.51	6,985.1	-186.6	715.7	-713.7	10.00	10.00	0.00
7,300.0	68.98	270.51	7,028.9	-185.8	626.0	-624.0	10.00	10.00	0.00
7,400.0	78.98	270.51	7,056.4	-184.9	530.0	-528.0	10.00	10.00	0.00
7,500.0	88.98	270.51	7,066.9	-184.0	430.7	-428.7	10.00	10.00	0.00
7,508.7	89.85	270.51	7,067.0	-184.0	422.0	-420.0	10.00	10.00	0.00
GF N-34-33HN LP									
7,571.3	89.85	271.77	7,067.2	-182.7	359.4	-357.4	2.00	-0.01	2.00
7,600.0	89.85	271.77	7,067.2	-181.8	330.7	-328.8	0.00	0.00	0.00
7,700.0	89.85	271.77	7,067.5	-178.7	230.7	-228.8	0.00	0.00	0.00
7,800.0	89.85	271.77	7,067.8	-175.7	130.8	-128.9	0.00	0.00	0.00
7,900.0	89.85	271.77	7,068.0	-172.6	30.8	-29.0	0.00	0.00	0.00
8,000.0	89.85	271.77	7,068.3	-169.5	-69.1	70.9	0.00	0.00	0.00
8,100.0	89.85	271.77	7,068.6	-166.4	-169.1	170.8	0.00	0.00	0.00
8,200.0	89.85	271.77	7,068.8	-163.3	-269.0	270.7	0.00	0.00	0.00
8,300.0	89.85	271.77	7,069.1	-160.2	-369.0	370.6	0.00	0.00	0.00
8,400.0	89.85	271.77	7,069.4	-157.2	-468.9	470.6	0.00	0.00	0.00
8,500.0	89.85	271.77	7,069.6	-154.1	-568.9	570.5	0.00	0.00	0.00
8,600.0	89.85	271.77	7,069.9	-151.0	-668.8	670.4	0.00	0.00	0.00
8,700.0	89.85	271.77	7,070.2	-147.9	-768.8	770.3	0.00	0.00	0.00
8,800.0	89.85	271.77	7,070.4	-144.8	-868.7	870.2	0.00	0.00	0.00
8,900.0	89.85	271.77	7,070.7	-141.7	-968.7	970.1	0.00	0.00	0.00
9,000.0	89.85	271.77	7,071.0	-138.7	-1,068.6	1,070.0	0.00	0.00	0.00
9,100.0	89.85	271.77	7,071.2	-135.6	-1,168.6	1,170.0	0.00	0.00	0.00
9,200.0	89.85	271.77	7,071.5	-132.5	-1,268.5	1,269.9	0.00	0.00	0.00
9,300.0	89.85	271.77	7,071.8	-129.4	-1,368.5	1,369.8	0.00	0.00	0.00
9,400.0	89.85	271.77	7,072.0	-126.3	-1,468.4	1,469.7	0.00	0.00	0.00
9,500.0	89.85	271.77	7,072.3	-123.2	-1,568.4	1,569.6	0.00	0.00	0.00
9,600.0	89.85	271.77	7,072.6	-120.1	-1,668.3	1,669.5	0.00	0.00	0.00
9,700.0	89.85	271.77	7,072.8	-117.1	-1,768.3	1,769.4	0.00	0.00	0.00
9,800.0	89.85	271.77	7,073.1	-114.0	-1,868.2	1,869.3	0.00	0.00	0.00
9,900.0	89.85	271.77	7,073.4	-110.9	-1,968.2	1,969.3	0.00	0.00	0.00



Database:	EDM	Local Co-ordinate Reference:	Well GROVES FARM N-34-33HN
Company:	Bayswater Exploration & Production, LLC	TVD Reference:	KB @ 4867.0usft (Original Well Elev)
Project:	DJ Basin	MD Reference:	KB @ 4867.0usft (Original Well Elev)
Site:	Groves Farm 34-L Pad	North Reference:	True
Well:	GROVES FARM N-34-33HN	Survey Calculation Method:	Minimum Curvature
Wellbore:	Wellbore #1		
Design:	Design #1		

Planned Survey									
Measured Depth (usft)	Inclination (°)	Azimuth (°)	Vertical Depth (usft)	+N/-S (usft)	+E/-W (usft)	Vertical Section (usft)	Dogleg Rate (°/100usft)	Build Rate (°/100usft)	Turn Rate (°/100usft)
10,000.0	89.85	271.77	7,073.7	-107.8	-2,068.2	2,069.2	0.00	0.00	0.00
10,100.0	89.85	271.77	7,073.9	-104.7	-2,168.1	2,169.1	0.00	0.00	0.00
10,200.0	89.85	271.77	7,074.2	-101.6	-2,268.1	2,269.0	0.00	0.00	0.00
10,300.0	89.85	271.77	7,074.5	-98.6	-2,368.0	2,368.9	0.00	0.00	0.00
10,400.0	89.85	271.77	7,074.7	-95.5	-2,468.0	2,468.8	0.00	0.00	0.00
10,500.0	89.85	271.77	7,075.0	-92.4	-2,567.9	2,568.7	0.00	0.00	0.00
10,600.0	89.85	271.77	7,075.3	-89.3	-2,667.9	2,668.7	0.00	0.00	0.00
10,700.0	89.85	271.77	7,075.5	-86.2	-2,767.8	2,768.6	0.00	0.00	0.00
10,800.0	89.85	271.77	7,075.8	-83.1	-2,867.8	2,868.5	0.00	0.00	0.00
10,900.0	89.85	271.77	7,076.1	-80.1	-2,967.7	2,968.4	0.00	0.00	0.00
11,000.0	89.85	271.77	7,076.3	-77.0	-3,067.7	3,068.3	0.00	0.00	0.00
11,100.0	89.85	271.77	7,076.6	-73.9	-3,167.6	3,168.2	0.00	0.00	0.00
11,200.0	89.85	271.77	7,076.9	-70.8	-3,267.6	3,268.1	0.00	0.00	0.00
11,300.0	89.85	271.77	7,077.1	-67.7	-3,367.5	3,368.1	0.00	0.00	0.00
11,400.0	89.85	271.77	7,077.4	-64.6	-3,467.5	3,468.0	0.00	0.00	0.00
11,500.0	89.85	271.77	7,077.7	-61.6	-3,567.4	3,567.9	0.00	0.00	0.00
11,600.0	89.85	271.77	7,077.9	-58.5	-3,667.4	3,667.8	0.00	0.00	0.00
11,700.0	89.85	271.77	7,078.2	-55.4	-3,767.3	3,767.7	0.00	0.00	0.00
11,800.0	89.85	271.77	7,078.5	-52.3	-3,867.3	3,867.6	0.00	0.00	0.00
11,900.0	89.85	271.77	7,078.7	-49.2	-3,967.2	3,967.5	0.00	0.00	0.00
12,000.0	89.85	271.77	7,079.0	-46.1	-4,067.2	4,067.5	0.00	0.00	0.00
12,100.0	89.85	271.77	7,079.3	-43.0	-4,167.1	4,167.4	0.00	0.00	0.00
12,200.0	89.85	271.77	7,079.5	-40.0	-4,267.1	4,267.3	0.00	0.00	0.00
12,219.7	89.85	271.77	7,079.6	-39.4	-4,286.7	4,286.9	0.00	0.00	0.00
12,300.0	89.85	270.16	7,079.8	-38.0	-4,367.1	4,367.2	2.00	0.01	-2.00
12,343.3	89.86	269.29	7,079.9	-38.2	-4,410.4	4,410.5	2.00	0.01	-2.00
GF N-34-33HN VP									
12,400.0	89.86	269.29	7,080.0	-38.9	-4,467.1	4,467.2	0.00	0.00	0.00
12,500.0	89.86	269.29	7,080.3	-40.1	-4,567.1	4,567.2	0.00	0.00	0.00
12,600.0	89.86	269.29	7,080.5	-41.4	-4,667.1	4,667.2	0.00	0.00	0.00
12,700.0	89.86	269.29	7,080.8	-42.6	-4,767.0	4,767.2	0.00	0.00	0.00
12,800.0	89.86	269.29	7,081.0	-43.8	-4,867.0	4,867.2	0.00	0.00	0.00
12,900.0	89.86	269.29	7,081.3	-45.1	-4,967.0	4,967.2	0.00	0.00	0.00
13,000.0	89.86	269.29	7,081.6	-46.3	-5,067.0	5,067.2	0.00	0.00	0.00
13,100.0	89.86	269.29	7,081.8	-47.5	-5,167.0	5,167.2	0.00	0.00	0.00
13,200.0	89.86	269.29	7,082.1	-48.8	-5,267.0	5,267.2	0.00	0.00	0.00
13,300.0	89.86	269.29	7,082.3	-50.0	-5,367.0	5,367.2	0.00	0.00	0.00
13,400.0	89.86	269.29	7,082.6	-51.2	-5,467.0	5,467.2	0.00	0.00	0.00
13,500.0	89.86	269.29	7,082.8	-52.4	-5,567.0	5,567.2	0.00	0.00	0.00
13,600.0	89.86	269.29	7,083.1	-53.7	-5,667.0	5,667.2	0.00	0.00	0.00
13,700.0	89.86	269.29	7,083.3	-54.9	-5,767.0	5,767.2	0.00	0.00	0.00
13,800.0	89.86	269.29	7,083.6	-56.1	-5,867.0	5,867.2	0.00	0.00	0.00
13,900.0	89.86	269.29	7,083.8	-57.4	-5,967.0	5,967.2	0.00	0.00	0.00
14,000.0	89.86	269.29	7,084.1	-58.6	-6,066.9	6,067.2	0.00	0.00	0.00
14,100.0	89.86	269.29	7,084.3	-59.8	-6,166.9	6,167.2	0.00	0.00	0.00
14,200.0	89.86	269.29	7,084.6	-61.1	-6,266.9	6,267.2	0.00	0.00	0.00
14,300.0	89.86	269.29	7,084.8	-62.3	-6,366.9	6,367.2	0.00	0.00	0.00
14,400.0	89.86	269.29	7,085.1	-63.5	-6,466.9	6,467.2	0.00	0.00	0.00
14,500.0	89.86	269.29	7,085.3	-64.8	-6,566.9	6,567.2	0.00	0.00	0.00
14,600.0	89.86	269.29	7,085.6	-66.0	-6,666.9	6,667.2	0.00	0.00	0.00
14,700.0	89.86	269.29	7,085.8	-67.2	-6,766.9	6,767.2	0.00	0.00	0.00
14,800.0	89.86	269.29	7,086.1	-68.4	-6,866.9	6,867.2	0.00	0.00	0.00
14,900.0	89.86	269.29	7,086.3	-69.7	-6,966.9	6,967.2	0.00	0.00	0.00
15,000.0	89.86	269.29	7,086.6	-70.9	-7,066.9	7,067.2	0.00	0.00	0.00



Database:	EDM	Local Co-ordinate Reference:	Well GROVES FARM N-34-33HN
Company:	Bayswater Exploration & Production, LLC	TVD Reference:	KB @ 4867.0usft (Original Well Elev)
Project:	DJ Basin	MD Reference:	KB @ 4867.0usft (Original Well Elev)
Site:	Groves Farm 34-L Pad	North Reference:	True
Well:	GROVES FARM N-34-33HN	Survey Calculation Method:	Minimum Curvature
Wellbore:	Wellbore #1		
Design:	Design #1		

Planned Survey										
Measured Depth (usft)	Inclination (°)	Azimuth (°)	Vertical Depth (usft)	+N/-S (usft)	+E/-W (usft)	Vertical Section (usft)	Dogleg Rate (°/100usft)	Build Rate (°/100usft)	Turn Rate (°/100usft)	
15,100.0	89.86	269.29	7,086.8	-72.1	-7,166.9	7,167.2	0.00	0.00	0.00	
15,200.0	89.86	269.29	7,087.1	-73.4	-7,266.8	7,267.2	0.00	0.00	0.00	
15,300.0	89.86	269.29	7,087.3	-74.6	-7,366.8	7,367.2	0.00	0.00	0.00	
15,400.0	89.86	269.29	7,087.6	-75.8	-7,466.8	7,467.2	0.00	0.00	0.00	
15,500.0	89.86	269.29	7,087.8	-77.1	-7,566.8	7,567.2	0.00	0.00	0.00	
15,600.0	89.86	269.29	7,088.1	-78.3	-7,666.8	7,667.2	0.00	0.00	0.00	
15,700.0	89.86	269.29	7,088.4	-79.5	-7,766.8	7,767.2	0.00	0.00	0.00	
15,800.0	89.86	269.29	7,088.6	-80.8	-7,866.8	7,867.2	0.00	0.00	0.00	
15,900.0	89.86	269.29	7,088.9	-82.0	-7,966.8	7,967.2	0.00	0.00	0.00	
16,000.0	89.86	269.29	7,089.1	-83.2	-8,066.8	8,067.2	0.00	0.00	0.00	
16,100.0	89.86	269.29	7,089.4	-84.5	-8,166.8	8,167.2	0.00	0.00	0.00	
16,200.0	89.86	269.29	7,089.6	-85.7	-8,266.8	8,267.2	0.00	0.00	0.00	
16,300.0	89.86	269.29	7,089.9	-86.9	-8,366.8	8,367.2	0.00	0.00	0.00	
16,400.0	89.86	269.29	7,090.1	-88.1	-8,466.8	8,467.2	0.00	0.00	0.00	
16,500.0	89.86	269.29	7,090.4	-89.4	-8,566.7	8,567.2	0.00	0.00	0.00	
16,600.0	89.86	269.29	7,090.6	-90.6	-8,666.7	8,667.2	0.00	0.00	0.00	
16,700.0	89.86	269.29	7,090.9	-91.8	-8,766.7	8,767.2	0.00	0.00	0.00	
16,800.0	89.86	269.29	7,091.1	-93.1	-8,866.7	8,867.2	0.00	0.00	0.00	
16,900.0	89.86	269.29	7,091.4	-94.3	-8,966.7	8,967.2	0.00	0.00	0.00	
17,000.0	89.86	269.29	7,091.6	-95.5	-9,066.7	9,067.2	0.00	0.00	0.00	
17,100.0	89.86	269.29	7,091.9	-96.8	-9,166.7	9,167.2	0.00	0.00	0.00	
17,148.5	89.86	269.29	7,092.0	-97.4	-9,215.2	9,215.7	0.00	0.00	0.00	
GF N-34-33HN PBHL										

Design Targets										
Target Name	Dip Angle (°)	Dip Dir. (°)	TVD (usft)	+N/-S (usft)	+E/-W (usft)	Northing (usft)	Easting (usft)	Latitude	Longitude	
GF N-34-33HN LP - hit/miss target - Shape - Point	0.00	0.00	7,067.0	-184.0	422.0	1,436,990.99	3,238,665.30	40° 31' 47.168 N	104° 38' 29.069 W	
GF N-34-33HN VP - plan hits target center - Point	0.00	0.00	7,079.9	-38.2	-4,410.4	1,437,090.03	3,233,831.78	40° 31' 48.605 N	104° 39' 31.651 W	
GF N-34-33HN PBHL - plan hits target center - Point	0.00	0.00	7,092.0	-97.4	-9,215.2	1,436,984.45	3,229,027.75	40° 31' 48.007 N	104° 40' 33.877 W	