

BOST FARM 40N-8B-L2 WELL LOCATION CERTIFICATE

NW COR. SEC. 7
3/4" ALUM. CAP
PLS NO 25381, 2010

N 1/4 COR. SEC. 7
3/4" ALUM. CAP
PLS NO 25381, 2010

NE COR. SEC. 7
3/4" ALUM. CAP
PLS NO 25381, 2010

CULTURAL DISTANCES:

BUILDING: ±1676' SW
BUILDING UNIT: ±1676' SW
HIGH OCCUPANCY: +5280' SE
BUILDING UNIT: +5280' SW
DESIGNATED OUTSIDE ACTIVITY AREA: ±1264' W
PUBLIC ROAD: ±1300' W
ABOVE GROUND UTILITY: +5280' NE
RAILROAD: ±365' E
PROPERTY LINE:

SURFACE LOCATION:
GROUND ELEVATION=4871'
NAD83
LATITUDE:40.414641°
LONGITUDE:-104.827785°

TOP OF PRODUCTION ZONE:
NAD83
LATITUDE:40.413886°
LONGITUDE:-104.831824°

BOTTOM OF PRODUCTION ZONE:
NAD83
LATITUDE:40.413941°
LONGITUDE:-104.796043°

BOTTOM HOLE LOCATION:
NAD83
LATITUDE:40.413942°
LONGITUDE:-104.795684°

N00°16'10"W 2682.96'

N00°16'13"W 1341.56'

N00°16'34"W 1341.77'

N89°33'10"W

N89°32'59"W

N89°33'33"W

N89°33'00"W

N89°33'10"W

N89°32'59"W

N89°33'33"W

N89°33'00"W

N89°33'10"W

N89°32'59"W

N89°33'33"W

N89°33'00"W

N89°33'10"W

N89°32'59"W

N89°33'33"W

N89°33'00"W

N89°33'10"W

N89°32'59"W

N89°33'33"W

N89°33'00"W

N89°33'10"W

N89°32'59"W

N89°33'33"W

N89°33'00"W

N89°33'10"W

N89°32'59"W

N89°33'33"W

N89°33'00"W

N89°33'10"W

N89°32'59"W

N89°33'33"W

N89°33'00"W

N89°33'10"W

N89°32'59"W

N89°33'33"W

N89°33'00"W

N89°33'10"W

N89°32'59"W

N89°33'33"W

N89°33'00"W

N89°33'10"W

N89°32'59"W

N89°33'33"W

N89°33'00"W

N89°33'10"W

N89°32'59"W

N89°33'33"W

N89°33'00"W

N89°33'10"W

N89°32'59"W

N89°33'33"W

N89°33'00"W

N89°33'10"W

N89°32'59"W

N89°33'33"W

N89°33'00"W

N89°33'10"W

N89°32'59"W

N89°33'33"W

N89°33'00"W

N89°33'10"W

N89°32'59"W

N89°33'33"W

N89°33'00"W

N89°33'10"W

N89°32'59"W

N89°33'33"W

N89°33'00"W

N89°33'10"W

N89°32'59"W

N89°33'33"W

N89°33'00"W

N89°33'10"W

N89°32'59"W

N89°33'33"W

N89°33'00"W

N89°33'10"W

N89°32'59"W

N89°33'33"W

N89°33'00"W

N89°33'10"W

N89°32'59"W

N89°33'33"W

N89°33'00"W

N89°33'10"W

N89°32'59"W

N89°33'33"W

N89°33'00"W

N89°33'10"W

N89°32'59"W

N89°33'33"W

N89°33'00"W

N89°33'10"W

N89°32'59"W

N89°33'33"W

N89°33'00"W

N89°33'10"W

N89°32'59"W

N89°33'33"W

N89°33'00"W

N89°33'10"W

N89°32'59"W

N89°33'33"W

N89°33'00"W

N89°33'10"W

N89°32'59"W

N89°33'33"W

N89°33'00"W

N89°33'10"W

N89°32'59"W

N89°33'33"W

N89°33'00"W

N89°33'10"W

N89°32'59"W

N89°33'33"W

N89°33'00"W

N89°33'10"W

N89°32'59"W

N89°33'33"W

N89°33'00"W

N89°33'10"W

N89°32'59"W

N89°33'33"W

N89°33'00"W

N89°33'10"W

N89°32'59"W

N89°33'33"W

N89°33'00"W

N89°33'10"W

N89°32'59"W

N89°33'33"W

N89°33'00"W

N89°33'10"W

N89°32'59"W

N89°33'33"W

N89°33'00"W

N89°33'10"W

N89°32'59"W

N89°33'33"W

N89°33'00"W

N89°33'10"W

N89°32'59"W

N89°33'33"W

N89°33'00"W

N89°33'10"W

N89°32'59"W

N89°33'33"W

N89°33'00"W

N89°33'10"W

N89°32'59"W

N89°33'33"W

N89°33'00"W

N89°33'10"W

N89°32'59"W

N89°33'33"W

N89°33'00"W

N89°33'10"W

N89°32'59"W

N89°33'33"W

N89°33'00"W

N89°33'10"W

N89°32'59"W

N89°33'33"W

N89°33'00"W

N89°33'10"W

N89°32'59"W

N89°33'33"W

N89°33'00"W

N89°33'10"W

N89°32'59"W

N89°33'33"W

N89°33'00"W

N89°33'10"W

N89°32'59"W

N89°33'33"W

N89°33'00"W

N89°33'10"W

N89°32'59"W

N89°33'33"W

N89°33'00"W

N89°33'10"W

N89°32'59"W

N89°33'33"W

N89°33'00"W

N89°33'10"W

N89°32'59"W

N89°33'33"W

N89°33'00"W

N89°33'10"W

N89°32'59"W

N89°33'33"W

N89°33'00"W

N89°33'10"W

N89°32'59"W

N89°33'33"W

N89°33'00"W

N89°33'10"W

N89°32'59"W

N89°33'33"W

N89°33'00"W

N89°33'10"W

N89°32'59"W

N89°33'33"W

N89°33'00"W

N89°33'10"W

N89°32'59"W

N89°33'33"W

N89°33'00"W

N89°33'10"W

N89°32'59"W

N89°33'33"W

N89°33'00"W

N89°33'10"W

N89°32'59"W

N89°33'33"W

N89°33'00"W

N89°33'10"W

N89°32'59"W

N89°33'33"W

N89°33'00"W

N89°33'10"W

N89°32'59"W

N89°33'33"W

N89°33'00"W

N89°33'10"W

N89°32'59"W

N89°33'33"W

N89°33'00"W

N89°33'10"W

N89°32'59"W

N89°33'33"W

N89°33'00"W

N89°33'10"W

N89°32'59"W

N89°33'33"W

N89°33'00"W

N89°33'10"W

N89°32'59"W

N89°33'33"W

N89°33'00"W

N89°33'10"W

N89°32'59"W

N89°33'33"W

N89°33'00"W

N89°33'10"W

N89°32'59"W

N89°33'33"W

N89°33'00"W

N89°33'10"W

N89°32'59"W

N89°33'33"W

N89°33'00"W

N89°33'10"W

N89°32'59"W

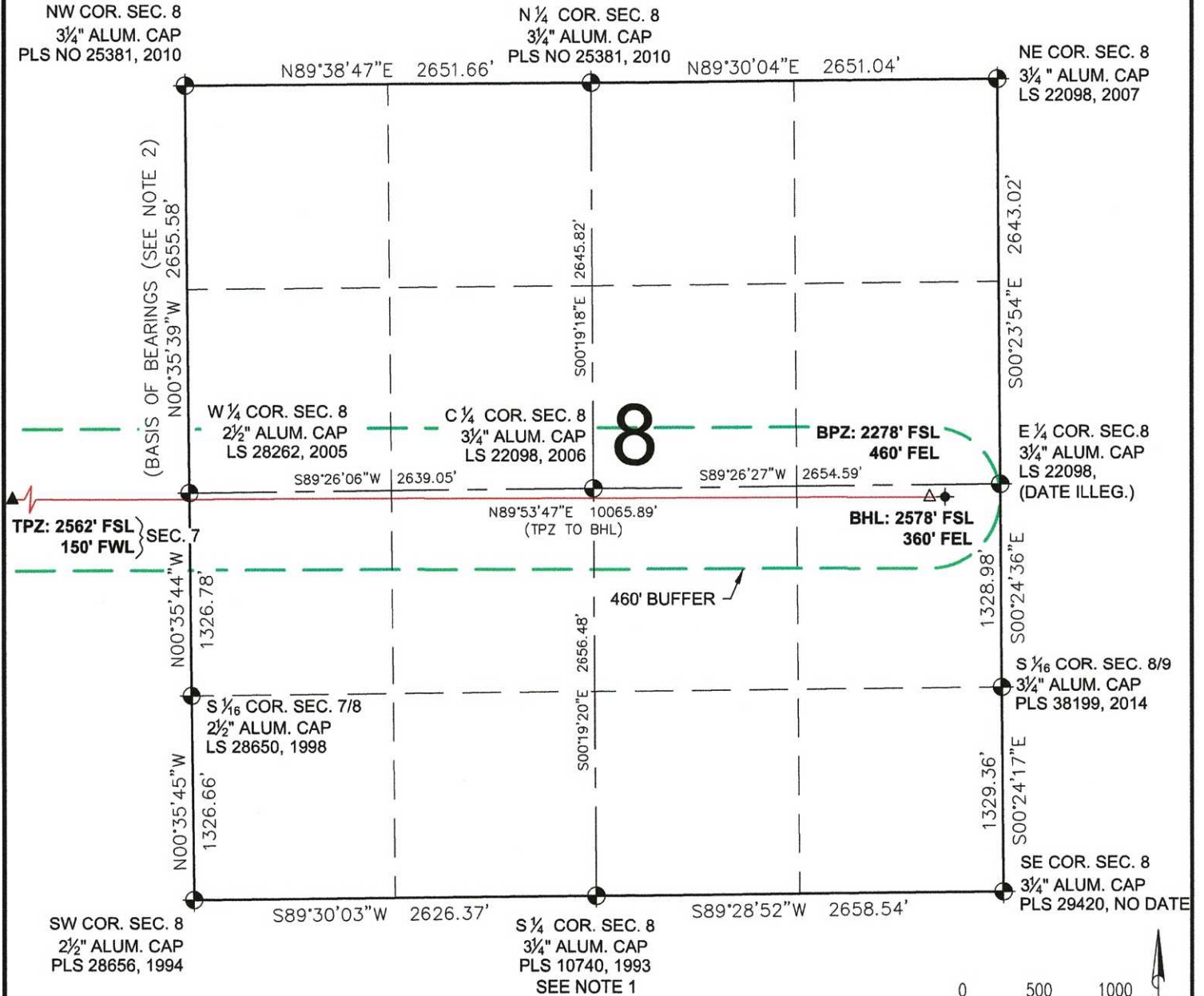
N89°33'33"W

N89°33'00"W

N89°33'10"W

N89°32'59"W

BOST FARM 40N-8B-L2 WELL LOCATION CERTIFICATE

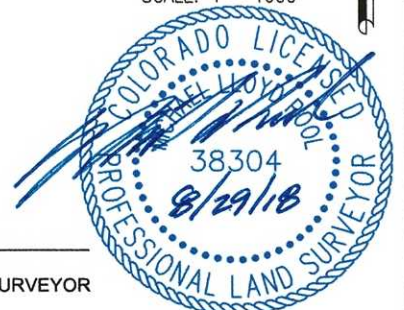
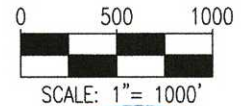


NOTES:
1. MONUMENT POSITION AND INFORMATION FROM FIELD DATE OF 10-08-2014. MONUMENT DESTROYED DURING CURRENT ROAD CONSTRUCTION, PROJECT SURVEYOR TO RE-ESTABLISH AT SAME POSITION, AS SHOWN HERE.

LEGEND

- ⊙ = EXISTING MONUMENT
- = CALCULATED POSITION
- = PROPOSED WELL
- ◆ = EXISTING WELL
- ⬮ = BOTTOM HOLE
- △ = BOTTOM OF PRODUCTION ZONE
- ▲ = TOP OF PRODUCTION ZONE
- TPZ = TOP OF PRODUCTION ZONE
- BHL = BOTTOM HOLE LOCATION
- BPZ = BOTTOM OF PRODUCTION ZONE

MICHAEL L. POOL, PLS 38304
COLORADO LICENSED PROFESSIONAL LAND SURVEYOR
FOR AND ON BEHALF OF P.F.S., LLC



SHEET 2 OF 2



FIELD DATE: 08-09-18	WELL NAME: BOST FARM 40N-8B-L2
DRAWING DATE: 08-27-18	SURFACE LOCATION: LOT 2 NW 1/4 SEC. 7, T5N, R66W, 6TH P.M.
BY: SMF	CHECKED BY: MMP
	WELD COUNTY, COLORADO

