

SRC ENERGY

Location: COLORADO Slot: SLOT#14 BOST FARM 40C-8-L2 (2506'FSL & 1256'FWL, SEC.07)
Field: WELD COUNTY (NAD83, TRUE NORTH) Well: BOST FARM 40C-8-L2
Facility: SEC.07-T05N-R66W Wellbore: BOST FARM 40C-8-L2 PWB

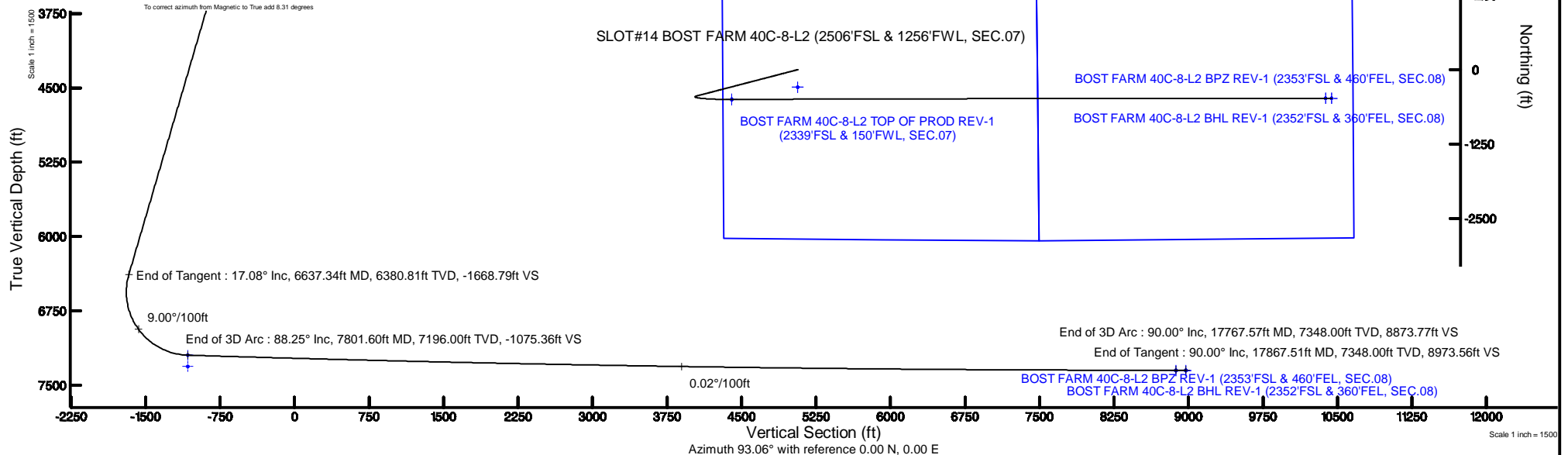
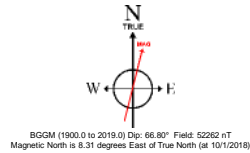
Plot reference wellpath is BOST FARM 40C-8-L2 (REV-B.0) PWB	Grid System: NAD83 / Lambert Colorado SP, Northern Zone (501), US feet
True vertical depths are referenced to PROPETRO 12 (4) (RKB)	North Reference: True north
Measured depths are referenced to PROPETRO 12 (4) (RKB)	Scale: True distance
PROPETRO 12 (4) (RKB) to Mean Sea Level: 4876 feet	Depths are in feet
Mean Sea Level to Mud line (At Slot: SLOT#14 BOST FARM 40C-8-L2 (2506'FSL & 1256'FWL, SEC.07): 0 feet	Created by: robiate01 on 2018-10-18
Coordinates are in feet referenced to Slot	Database: WA DENVER

Location Information

Facility Name			Grid East (US ft)	Grid North (US ft)	Latitude	Longitude
SEC.07-T05N-R66W			3187161.591	1394309.789	40°24'49.806"N	104°49'40.249"W
Slot	Local N (ft)	Local E (ft)	Grid East (US ft)	Grid North (US ft)	Latitude	Longitude
SLOT#14 BOST FARM 40C-8-L2 (2506'FSL & 1256'FWL, SEC.07)	294.00	-2.80	3187156.563	1394603.748	40°24'52.711"N	104°49'40.285"W
PROPETRO 12 (4) (RKB) to Mud line (N Slot: SLOT#14 BOST FARM 40C-8-L2 (2506'FSL & 1256'FWL, SEC.07))					4876ft	
Mean Sea Level to Mud line (N Slot: SLOT#14 BOST FARM 40C-8-L2 (2506'FSL & 1256'FWL, SEC.07))					0ft	
PROPETRO 12 (4) (RKB) to Mean Sea Level					4876ft	

Survey Program

Start MD (ft)	End MD (ft)	Tool	Model	Log Name/Comment	Wellbore
4.00	1750.00	BH NavTrak	BH NavTrak (Standard)		BOST FARM 40C-8-L2 PWB
1750.00	17867.51	BH AutoTrak Curve	BH AutoTrak Curve (MagCAD+IFR1, Short spacing)		BOST FARM 40C-8-L2 PWB



Targets

Name	MD (ft)	TVD (ft)	Local N (ft)	Local E (ft)	Grid East (US ft)	Grid North (US ft)	Latitude	Longitude
SEC.07-T05N-R66W		0.00	-294.00	2.80	3187161.59	1394309.79	40°24'49.806"N	104°49'40.249"W
SEC.08-T05N-R66W		0.00	-294.00	2.80	3187161.59	1394309.79	40°24'49.806"N	104°49'40.249"W
BOST FARM 40C-8-L2 TOP OF PROD REV-1 (2339'FSL & 150'FWL, SEC.07)	7801.60	7196.00	-499.10	-1103.57	3186056.86	1394096.31	40°24'47.779"N	104°49'54.552"W
BOST FARM 40C-8-L2 TOP OF PROD ON PLAT (2339'FSL & 150'FWL, SEC.07)		7310.00	-499.08	-1103.57	3186056.86	1394096.33	40°24'47.779"N	104°49'54.552"W
BOST FARM 40C-8-L2 BHL REV-1 (2352'FSL & 360'FEL, SEC.08)	17867.51	7348.00	-478.88	8960.78	3196120.34	1394192.82	40°24'47.963"N	104°47'44.441"W
BOST FARM 40C-8-L2 BPZ REV-1 (2353'FSL & 460'FEL, SEC.08)	17767.57	7348.00	-478.92	8860.84	3196020.41	1394192.02	40°24'47.963"N	104°47'45.733"W
BOST FARM 40C-8-L2 BHL ON PLAT (2352'FSL & 360'FEL, SEC.08)		7353.00	-478.90	8960.79	3196120.36	1394192.80	40°24'47.963"N	104°47'44.441"W
BOST FARM 40C-8-L2 BPZ ON PLAT (2353'FSL & 460'FEL, SEC.08)		7353.00	-478.94	8860.82	3196020.40	1394192.00	40°24'47.963"N	104°47'45.733"W

Well Profile Data

Design Comment	MD (ft)	Inc (°)	Az (°)	TVD (ft)	Local N (ft)	Local E (ft)	DLS (°/100ft)	VS (ft)
Tie On	4.00	0.000	255.413	4.00	0.00	0.00	0.00	0.00
End of Tangent	250.00	0.000	255.413	250.00	0.00	0.00	0.00	0.00
End of Build	1103.82	17.076	255.413	1091.23	-31.81	-122.22	2.00	-120.35
End of Tangent	6637.34	17.076	255.413	6380.81	-441.04	-1694.74	0.00	-1668.79
End of 3D Arc	7801.60	88.252	89.788	7196.00	-499.10	-1103.57	9.00	-1075.36
End of 3D Arc	17767.57	90.000	89.979	7348.00	-478.92	8860.84	0.02	8873.77
End of Tangent	17867.51	90.000	89.979	7348.00	-478.88	8960.78	0.00	8973.56