

SRC ENERGY

Location: COLORADO Slot: SLOT#15 BOST FARM 9N-8C-L (2506'FSL & 1236'FWL, SEC.07)
Field: WELD COUNTY (NAD83, TRUE NORTH) Well: BOST FARM 9N-8C-L
Facility: SEC.07-T05N-R66W Wellbore: BOST FARM 9N-8C-L PWB

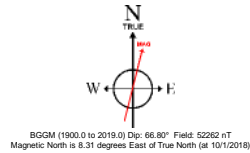
Plot reference wellpath is BOST FARM 9N-8C-L (REV-B.0) PWP	Grid System: NAD83 / Lambert Colorado SP, Northern Zone (501), US feet
True vertical depths are referenced to PROPETRO 12 (4) (RKB)	North Reference: True north
Measured depths are referenced to PROPETRO 12 (4) (RKB)	Scale: True distance
PROPETRO 12 (4) (RKB) to Mean Sea Level: 4877 feet	Depths are in feet
Mean Sea Level to Mud line (At Slot: SLOT#15 BOST FARM 9N-8C-L (2506'FSL & 1236'FWL, SEC.07)): 0 feet	Created by: robale01 on 2018-10-18
Coordinates are in feet referenced to Slot	Database: WA DENVER

Location Information

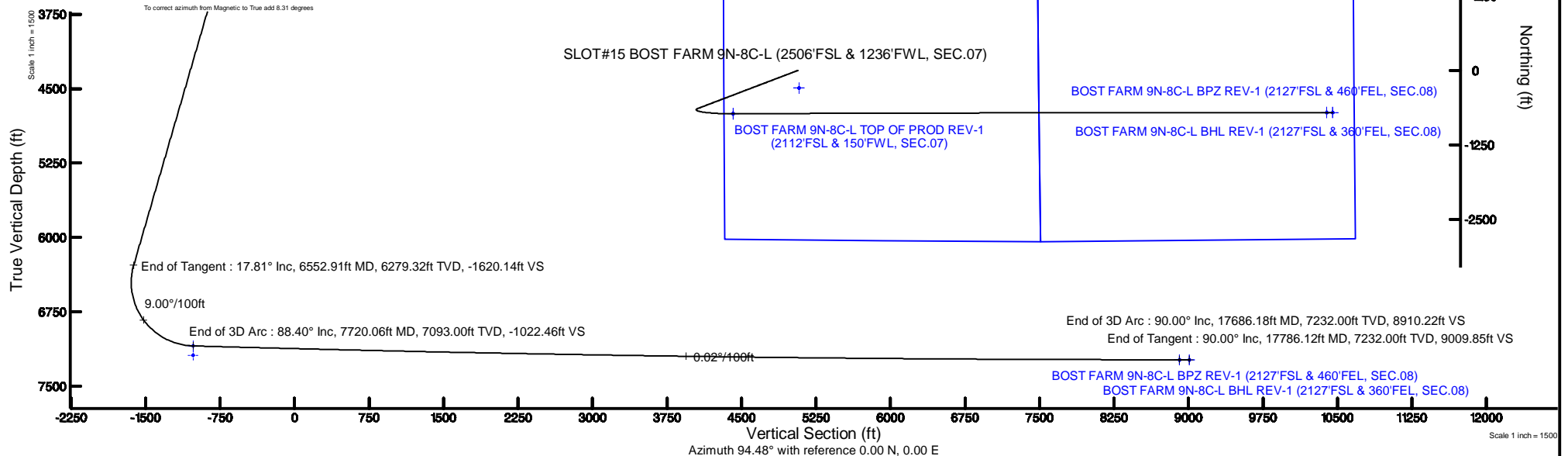
Facility Name				Grid East (US ft)	Grid North (US ft)	Latitude	Longitude
SEC.07-T05N-R66W				3187161.591	1394309.789	40°24'49.806"N	104°49'40.249"W
Slot	Local N (ft)	Local E (ft)	Grid East (US ft)	Grid North (US ft)	Latitude	Longitude	
SLOT#15 BOST FARM 9N-8C-L (2506'FSL & 1236'FWL, SEC.07)	294.00	-22.85	3187136.515	1394603.596	40°24'52.711"N	104°49'40.544"W	
PROPETRO 12 (4) (RKB) to Mud line (At Slot: SLOT#15 BOST FARM 9N-8C-L (2506'FSL & 1236'FWL, SEC.07))						4877ft	
Mean Sea Level to Mud line (At Slot: SLOT#15 BOST FARM 9N-8C-L (2506'FSL & 1236'FWL, SEC.07))						0ft	
PROPETRO 12 (4) (RKB) to Mean Sea Level						4877ft	

Survey Program

Start MD (ft)	End MD (ft)	Tool	Model	Log Name/Comment	Wellbore
4.00	1750.00	BH# NavTrak	BH# NavTrak (Standard)		BOST FARM 9N-8C-L PWB
1750.00	17786.12	BH# AutoTrak Curve	BH# AutoTrak Curve (MagCAD+IFR1, Short spacing)		BOST FARM 9N-8C-L PWB



To correct azimuth from Magnetic to True add 6.81 degrees



Targets

Name	MD (ft)	TVD (ft)	Local N (ft)	Local E (ft)	Grid East (US ft)	Grid North (US ft)	Latitude	Longitude
SEC.07-T05N-R66W		1.00	-294.00	22.85	3187161.59	1394309.79	40°24'49.806"N	104°49'40.249"W
SEC.08-T05N-R66W		1.00	-294.00	22.85	3187161.59	1394309.79	40°24'49.806"N	104°49'40.249"W
BOST FARM 9N-8C-L TOP OF PROD REV-1 (2112'FSL & 150'FWL, SEC.07)	7720.06	7093.00	-725.28	-1082.44	3186059.64	1393870.16	40°24'45.544"N	104°49'54.538"W
BOST FARM 9N-8C-L TOP OF PROD ON PLAT (2112'FSL & 150'FWL, SEC.07)		7187.00	-725.32	-1082.41	3186059.68	1393870.12	40°24'45.544"N	104°49'54.538"W
BOST FARM 9N-8C-L BHL REV-1 (2127'FSL & 360'FEL, SEC.08)	17786.12	7232.00	-704.04	8982.30	3196123.52	1393967.88	40°24'45.738"N	104°47'44.423"W
BOST FARM 9N-8C-L BPZ REV-1 (2127'FSL & 460'FEL, SEC.08)	17686.18	7232.00	-704.08	8882.36	3196023.59	1393966.88	40°24'45.738"N	104°47'45.715"W
BOST FARM 9N-8C-L BHL ON PLAT (2127'FSL & 360'FEL, SEC.08)		7236.00	-704.04	8982.32	3196123.54	1393967.88	40°24'45.738"N	104°47'44.423"W
BOST FARM 9N-8C-L BPZ ON PLAT (2127'FSL & 460'FEL, SEC.08)		7236.00	-704.08	8882.34	3196023.58	1393966.88	40°24'45.738"N	104°47'45.715"W

Well Profile Data

Design Comment	MD (ft)	Inc (°)	Az (°)	TVD (ft)	Local N (ft)	Local E (ft)	DLS (°/100ft)	VS (ft)
Tie On	4.00	0.000	249.146	4.00	0.00	0.00	0.00	0.00
End of Tangent	250.00	0.000	249.146	250.00	0.00	0.00	0.00	0.00
End of Build	1140.40	17.808	249.146	1126.13	-48.86	-128.27	2.00	-124.06
End of Tangent	6552.91	17.808	249.146	6279.32	-638.12	-1675.12	0.00	-1620.14
End of 3D Arc	7720.06	88.402	89.777	7093.00	-725.28	-1082.44	9.00	-1022.46
End of 3D Arc	17686.18	90.000	89.979	7232.00	-704.08	8882.36	0.02	8910.22
End of Tangent	17786.12	90.000	89.979	7232.00	-704.04	8982.30	0.00	9009.85