

SRC ENERGY

Location: COLORADO Slot: SLOT#17 BOST FARM 9C-8-L (2506'FSL & 1196'FWL, SEC.07)
Field: WELD COUNTY (NAD83, TRUE NORTH) Well: BOST FARM 9C-8-L
Facility: SEC.07-T05N-R66W Wellbore: BOST FARM 9C-8-L PWB

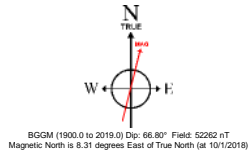
Plot reference wellpath is BOST FARM 9C-8-L (REV-B.0) PWP	Grid System: NAD83 / Lambert Colorado SP, Northern Zone (501), US feet
True vertical depths are referenced to PROPETRO 12 (4) (RKB)	North Reference: True north
Measured depths are referenced to PROPETRO 12 (4) (RKB)	Scale: True distance
PROPETRO 12 (4) (RKB) to Mean Sea Level: 4878 feet	Depths are in feet
Mean Sea Level to Mud line (At Slot: SLOT#17 BOST FARM 9C-8-L (2506'FSL & 1196'FWL, SEC.07)): 0 feet	Created by: robish01 on 2018-10-18
Coordinates are in feet referenced to Slot	Database: WA DENVER

Location Information

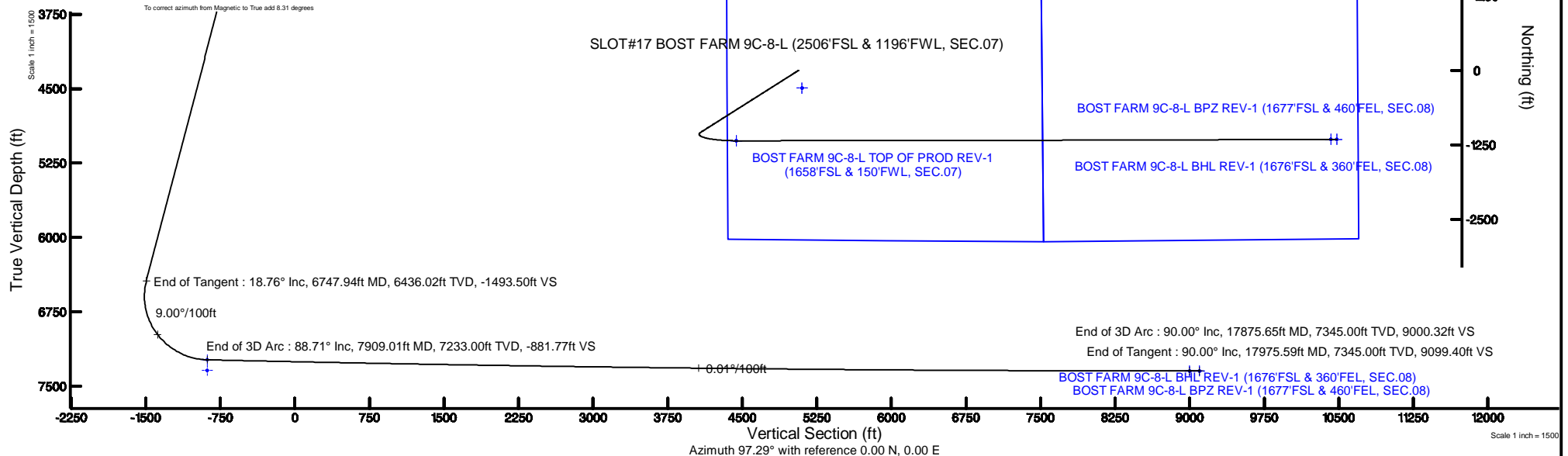
Facility Name		Grid East (US ft)	Grid North (US ft)	Latitude	Longitude
SEC.07-T05N-R66W		3187161.591	1394309.789	40°24'49.806"N	104°49'40.249"W
Slot	Local N (ft)	Local E (ft)	Grid East (US ft)	Grid North (US ft)	Latitude
SLOT#17 BOST FARM 9C-8-L (2506'FSL & 1196'FWL, SEC.07)	294.36	-62.95	3187096.416	1394603.656	40°24'52.715"N
PROPETRO 12 (4) (RKB) to Mud line (At Slot: SLOT#17 BOST FARM 9C-8-L (2506'FSL & 1196'FWL, SEC.07))					4878ft
Mean Sea Level to Mud line (At Slot: SLOT#17 BOST FARM 9C-8-L (2506'FSL & 1196'FWL, SEC.07))					0ft
PROPETRO 12 (4) (RKB) to Mean Sea Level					4878ft

Survey Program

Start MD (ft)	End MD (ft)	Tool	Model	Log Name/Comment	Wellbore
4.00	1750.00	BH# NavTrak	BH# NavTrak (Standard)		BOST FARM 9C-8-L PWB
1750.00	17975.59	BH# AutoTrak Curve	BH# AutoTrak Curve (MagCAD+IFR1, Short spacing)		BOST FARM 9C-8-L PWB



To correct azimuth from Magnetic to True add 6.31 degrees



Targets

Name	MD (ft)	TVD (ft)	Local N (ft)	Local E (ft)	Grid East (US ft)	Grid North (US ft)	Latitude	Longitude	
SEC.07-T05N-R66W		2.00	-294.36	62.95	3187161.59	1394309.79	40°24'49.806"N	104°49'40.249"W	
SEC.08-T05N-R66W		2.00	-294.36	62.95	3187161.59	1394309.79	40°24'49.806"N	104°49'40.249"W	
BOST FARM 9C-8-L TOP OF PROD REV-1 (1658'FSL & 150'FWL, SEC.07)	7909.01	7233.00	-1179.62	-1039.81	3186065.62	1393416.24	40°24'41.058"N	104°49'54.505"W	
BOST FARM 9C-8-L TOP OF PROD ON PLAT (1658'FSL & 150'FWL, SEC.07)		7341.00	-1179.62	-1039.83	3186065.60	1393416.24	40°24'41.058"N	104°49'54.505"W	
BOST FARM 9C-8-L BHL REV-1 (1676'FSL & 360'FEL, SEC.08)		17975.59	7345.00	-1154.32	8925.89	3196130.42	1393517.81	40°24'41.292"N	104°47'44.380"W
BOST FARM 9C-8-L BPZ REV-1 (1677'FSL & 460'FEL, SEC.08)		17875.65	7345.00	-1154.76	8925.95	3196030.49	1393516.61	40°24'41.288"N	104°47'45.672"W
BOST FARM 9C-8-L BHL ON PLAT (1676'FSL & 360'FEL, SEC.08)		7347.00	-1154.32	8925.92	3196130.45	1393517.81	40°24'41.292"N	104°47'44.380"W	
BOST FARM 9C-8-L BPZ ON PLAT (1677'FSL & 460'FEL, SEC.08)		7347.00	-1154.72	8925.95	3196030.49	1393516.65	40°24'41.288"N	104°47'45.672"W	

Well Profile Data

Design Comment	MD (ft)	Inc (°)	Az (°)	TVD (ft)	Local N (ft)	Local E (ft)	DLS (°/100ft)	VS (ft)
Tie On	4.00	0.000	237.631	4.00	0.00	0.00	0.00	0.00
End of Tangent	250.00	0.000	237.631	250.00	0.00	0.00	0.00	0.00
End of Build	1187.79	18.756	237.631	1171.13	-81.44	-128.49	2.00	-117.12
End of Tangent	6747.94	18.756	237.631	6436.02	-1038.57	-1638.48	0.00	-1493.50
End of 3D Arc	7909.01	88.712	89.967	7233.00	-1179.62	-1039.81	9.00	-881.77
End of 3D Arc	17875.65	90.000	89.747	7345.00	-1154.76	8925.95	0.01	9000.32
End of Tangent	17975.59	90.000	89.747	7345.00	-1154.32	9025.89	0.00	9099.40