

SRC ENERGY

Location: COLORADO Slot: SLOT#18 BOST FARM 39N-8C-L (2506'FSL & 1176'FWL, SEC.07)
 Field: WELD COUNTY (NAD83, TRUE NORTH) Well: BOST FARM 39N-8C-L
 Facility: SEC.07-T05N-R66W Wellbore: BOST FARM 39N-8C-L-PWB

Plot reference wellpath is BOST FARM 39N-8C-L (REV-B.0) PWP		Grid System: NAD83 / Lambert Colorado SP, Northern Zone (501), US feet
True vertical depths are referenced to PROPETRO 12 (4) (RKB)	North Reference: True north	
Measured depths are referenced to PROPETRO 12 (4) (RKB)	Scale: True distance	
PROPETRO 12 (4) (RKB) to Mean Sea Level: 4878 feet	Depths are in feet	
Mean Sea Level to Mud line (At Slot: SLOT#18 BOST FARM 39N-8C-L (2506'FSL & 1176'FWL, SEC.07)): 0 feet	Created by: robisat01 on 2018-10-18	
Coordinates are in feet referenced to Slot	Database: WA DENVER	

Location Information

Facility Name				Grid East (US ft)	Grid North (US ft)	Latitude	Longitude
SEC.07-T05N-R66W				3187161.591	1394309.789	40°24'49.806"N	104°49'40.249"W
Slot		Local N (ft)	Local E (ft)	Grid East (US ft)	Grid North (US ft)	Latitude	Longitude
SLOT#18 BOST FARM 39N-8C-L (2506'FSL & 1176'FWL, SEC.07)		294.37	-82.72	3187076.647	1394603.506	40°24'52.715"N	104°49'41.318"W
PROPETRO 12 (4) (RKB) to Mud line (At Slot: SLOT#18 BOST FARM 39N-8C-L (2506'FSL & 1176'FWL, SEC.07))							4878ft
Mean Sea Level to Mud line (At Slot: SLOT#18 BOST FARM 39N-8C-L (2506'FSL & 1176'FWL, SEC.07))							0ft
PROPETRO 12 (4) (RKB) to Mean Sea Level							4878ft

Survey Program

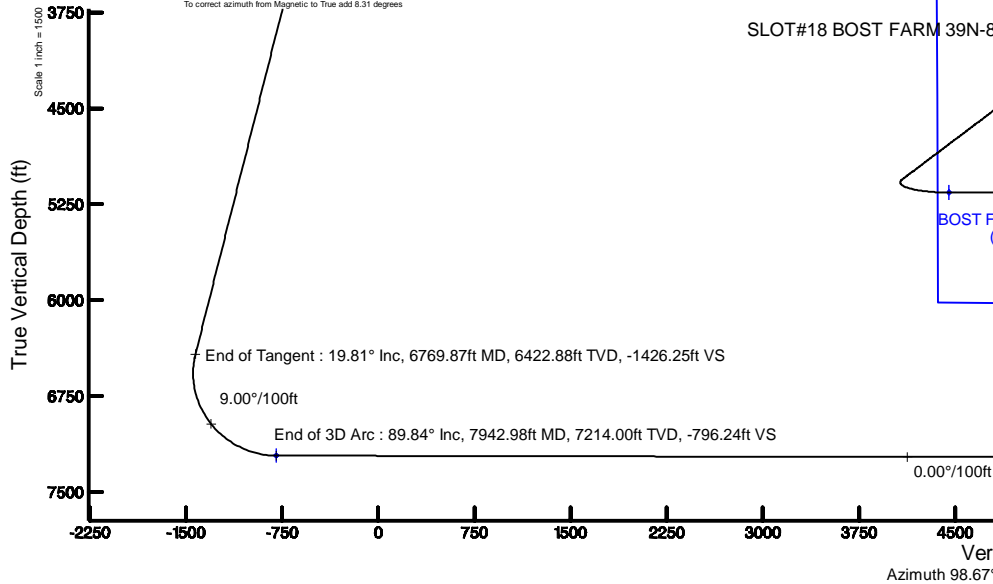
Start MD (ft)	End MD (ft)	Tool	Model	Log Name/Comment	Wellbore
4.00	1750.00	BH NavTrak	BH NavTrak (Standard)		BOST FARM 39N-8C-L-PWB
1750.00	18009.43	BH AutoTrak Curve	BH AutoTrak Curve (MagCAD+IFR1, Short spacing)		BOST FARM 39N-8C-L-PWB



N
TRUE
W ← E →
MAG

BGGM (1900.0 to 2019.0) Dip: 66.80° Field: 5262 nT
 Magnetic North is 8.31 degrees East of True North (at 10/1/2018)

To correct azimuth from Magnetic to True add 8.31 degrees



Targets

Name	MD (ft)	TVD (ft)	Local N (ft)	Local E (ft)	Grid East (US ft)	Grid North (US ft)	Latitude	Longitude
SEC.07-T05N-R66W	2.00	-294.36	82.72	3187161.59	1394309.79	40°24'49.806"N	104°49'40.249"W	
SEC.08-T05N-R66W	2.00	-294.36	82.72	3187161.59	1394309.79	40°24'49.806"N	104°49'40.249"W	
BOST FARM 39N-8C-L TOP OF PROD REV-1 (1437'FSL & 150'FWL, SEC.07)	7942.98	7214.00	-1400.44	-1018.96	3186068.36	1393195.45	40°24'38.876"N	104°49'54.491"W
BOST FARM 39N-8C-L TOP OF PROD ON PLAT (1437'FSL & 150'FWL, SEC.07)		7215.00	-1400.40	-1018.95	3186068.38	1393195.49	40°24'38.876"N	104°49'54.491"W
BOST FARM 39N-8C-L BPZ REV-1 (1452'FSL & 460'FEL, SEC.08)	17909.49	7228.00	-1379.51	8947.50	3196033.98	1393291.88	40°24'39.067"N	104°47'45.650"W
BOST FARM 39N-8C-L BHL REV-1 (1451'FSL & 360'FEL, SEC.08)	18009.43	7228.00	-1379.47	9047.45	3196133.91	1393292.68	40°24'39.067"N	104°47'44.358"W
BOST FARM 39N-8C-L BPZ ON PLAT (1452'FSL & 460'FEL, SEC.08)		7229.00	-1379.49	8947.47	3196033.95	1393291.90	40°24'39.067"N	104°47'45.650"W
BOST FARM 39N-8C-L BHL ON PLAT (1451'FSL & 360'FEL, SEC.08)		7229.00	-1379.45	9047.45	3196133.91	1393292.70	40°24'39.067"N	104°47'44.358"W

Well Profile Data

Design Comment	MD (ft)	Inc (°)	Az (°)	TVD (ft)	Local N (ft)	Local E (ft)	DLS (°/100ft)	VS (ft)
Tie On	4.00	0.000	232.921	4.00	0.00	0.00	0.00	0.00
End of Tangent	250.00	0.000	232.921	250.00	0.00	0.00	0.00	0.00
End of Build	1240.74	19.815	232.921	1221.11	-102.26	-135.32	2.00	-118.36
End of Tangent	6769.87	19.815	232.921	6422.88	-1232.30	-1630.62	0.00	-1426.25
End of 3D Arc	7942.98	89.839	89.780	7214.00	-1400.44	-1018.96	9.00	-796.24
End of 3D Arc	17909.49	90.000	89.979	7228.00	-1379.51	8947.50	0.00	9053.21
End of Tangent	18009.43	90.000	89.979	7228.00	-1379.47	9047.45	0.00	9152.01