

SRC ENERGY

Location: COLORADO Slot: SLOT#19 BOST FARM 39N-8B-L (2507'FSL & 1156'FWL, SEC.07)
Field: WELD COUNTY (NAD83, TRUE NORTH) Well: BOST FARM 39N-8B-L
Facility: SEC.07-T05N-R66W Wellbore: BOST FARM 39N-8B-L PWB

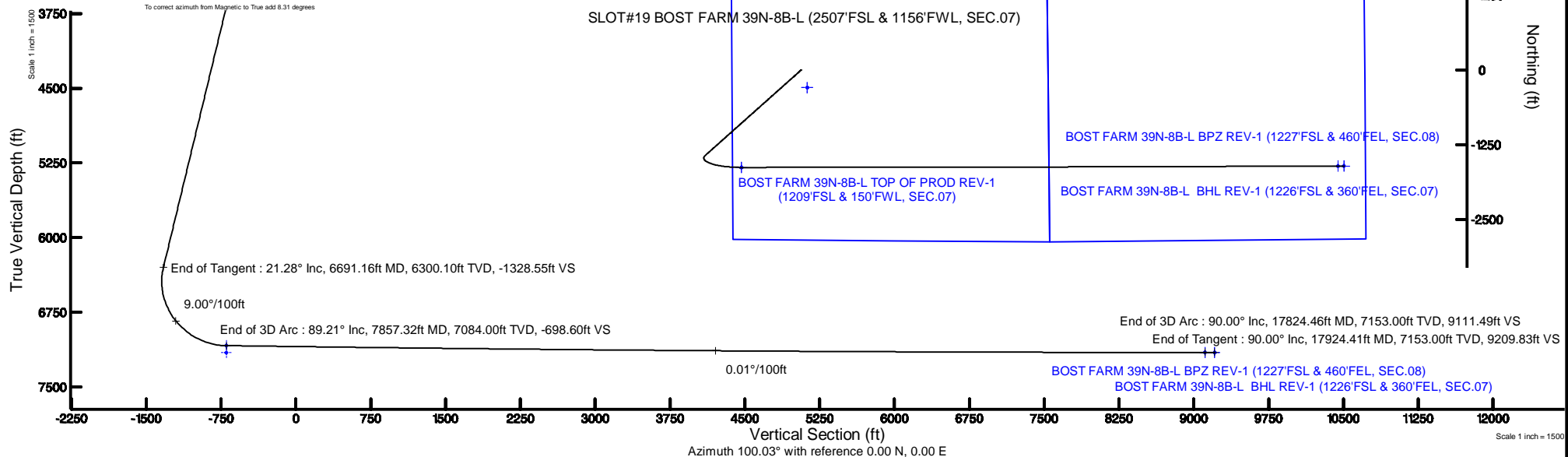
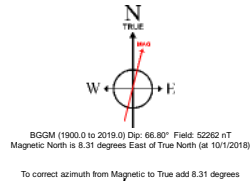
Plot reference wellpath is BOST FARM 39N-8B-L (REV-B.0) PWP	Grid System: NAD83 / Lambert Colorado SP, Northern Zone (501), US feet
True vertical depths are referenced to PROPETRO 12 (4) (RKB)	North Reference: True north
Measured depths are referenced to PROPETRO 12 (4) (RKB)	Scale: True distance
PROPETRO 12 (4) (RKB) to Mean Sea Level: 4878 feet	Depths are in feet
Mean Sea Level to Mud line (At Slot: SLOT#19 BOST FARM 39N-8B-L (2507'FSL & 1156'FWL, SEC.07)): 0 feet	Created by: robiate01 on 2018-10-18
Coordinates are in feet referenced to Slot	Database: WA DENVER

Location Information

Facility Name			Grid East (US ft)	Grid North (US ft)	Latitude	Longitude
SEC.07-T05N-R66W			3187161.591	1394309.789	40°24'49.806"N	104°49'40.249"W
Slot	Local N (ft)	Local E (ft)	Grid East (US ft)	Grid North (US ft)	Latitude	Longitude
SLOT#19 BOST FARM 39N-8B-L (2507'FSL & 1156'FWL, SEC.07)	294.73	-102.77	3187056.596	1394603.719	40°24'52.718"N	104°49'41.578"W
PROPETRO 12 (4) (RKB) to Mud line (N Slot: SLOT#19 BOST FARM 39N-8B-L (2507'FSL & 1156'FWL, SEC.07))					4878R	
Mean Sea Level to Mud line (N Slot: SLOT#19 BOST FARM 39N-8B-L (2507'FSL & 1156'FWL, SEC.07))					0R	
PROPETRO 12 (4) (RKB) to Mean Sea Level					4878R	

Survey Program

Start MD (ft)	End MD (ft)	Tool	Model	Log Name/Comment	Wellbore
4.00	1750.00	BH NavTrak	BH NavTrak (Standard)		BOST FARM 39N-8B-L PWB
1750.00	17924.41	BH AutoTrak Curve	BH AutoTrak Curve (MagCAD+IFR1, Short spacing)		BOST FARM 39N-8B-L PWB



Targets

Name	MD (ft)	TVD (ft)	Local N (ft)	Local E (ft)	Grid East (US ft)	Grid North (US ft)	Latitude	Longitude
SEC.07-T05N-R66W		2.00	-294.73	102.77	3187161.59	1394309.79	40°24'49.806"N	104°49'40.249"W
SEC.08-T05N-R66W		2.00	-294.73	102.77	3187161.59	1394309.79	40°24'49.806"N	104°49'40.249"W
BOST FARM 39N-8B-L TOP OF PROD REV-1 (1209'FSL & 150'FWL, SEC.07)	7857.32	7084.00	-1629.51	-997.76	3186071.25	1392966.76	40°24'36.516"N	104°49'54.476"W
BOST FARM 39N-8B-L BHL REV-1 (1226'FSL & 360'FEL, SEC.07)	17924.41	7153.00	-1604.59	9068.97	3196137.09	1393067.94	40°24'36.846"N	104°47'44.340"W
BOST FARM 39N-8B-L BPZ REV-1 (1227'FSL & 460'FEL, SEC.08)	17824.46	7153.00	-1605.03	8969.03	3196037.16	1393066.74	40°24'36.842"N	104°47'45.632"W
BOST FARM 39N-8B-L BHL ON PLAT (1226'FSL & 360'FEL, SEC.07)		7154.00	-1604.59	9068.97	3196137.09	1393067.94	40°24'36.846"N	104°47'44.340"W
BOST FARM 39N-8B-L BPZ ON PLAT (1227'FSL & 460'FEL, SEC.08)		7154.00	-1604.99	8969.00	3196037.13	1393066.78	40°24'36.842"N	104°47'45.632"W
BOST FARM 39N-8B-L TOP OF PROD ON PLAT (1209'FSL & 150'FWL, SEC.07)		7155.00	-1629.55	-997.79	3186071.22	1392966.72	40°24'36.516"N	104°49'54.476"W

Well Profile Data

Design Comment	MD (ft)	Inc (°)	Az (°)	TVD (ft)	Local N (ft)	Local E (ft)	DLS (°/100ft)	VS (ft)
Tie On	4.00	0.000	228.257	4.00	0.00	0.00	0.00	0.00
End of Tangent	250.00	0.000	228.257	250.00	0.00	0.00	0.00	0.00
End of Build	1314.21	21.284	228.257	1289.90	-130.10	-145.80	2.00	-120.90
End of Tangent	6691.16	21.284	228.257	6300.10	-1429.58	-1602.13	0.00	-1328.55
End of 3D Arc	7857.32	89.207	89.972	7084.00	-1629.51	-997.76	9.00	-698.60
End of 3D Arc	17824.46	90.000	89.747	7153.00	-1605.03	8969.03	0.01	9111.49
End of Tangent	17924.41	90.000	89.747	7153.00	-1604.59	9068.97	0.00	9209.83