

SRC ENERGY

Location: COLORADO Slot: SLOT#20 BOST FARM 16C-8-L (2507'FSL & 1136'FWL, SEC.07)
Field: WELD COUNTY (NAD83, TRUE NORTH) Well: BOST FARM 16C-8-L
Facility: SEC.07-T05N-R66W Wellbore: BOST FARM 16C-8-L PWB

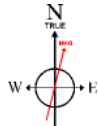
Plot reference wellpath is BOST FARM 16C-8-L (REV-B.0) PWP	Grid System: NAD83 / Lambert Colorado SP, Northern Zone (501), US feet
True vertical depths are referenced to PROPETRO 12 (4) (RKB)	North Reference: True north
Measured depths are referenced to PROPETRO 12 (4) (RKB)	Scale: True distance
PROPETRO 12 (4) (RKB) to Mean Sea Level: 4879 feet	Depths are in feet
Mean Sea Level to Mud line (At Slot: SLOT#20 BOST FARM 16C-8-L (2507'FSL & 1136'FWL, SEC.07)): 0 feet	Created by: robale01 on 2018-10-18
Coordinates are in feet referenced to Slot	Database: WA DENVER

Location Information

Facility Name				Grid East (US ft)	Grid North (US ft)	Latitude	Longitude
SEC.07-T05N-R66W				3187161.591	1394309.789	40°24'49.806"N	104°49'40.249"W
Slot	Local N (ft)	Local E (ft)	Grid East (US ft)	Grid North (US ft)	Latitude	Longitude	
SLOT#20 BOST FARM 16C-8-L (2507'FSL & 1136'FWL, SEC.07)	294.73	-122.82	3187036.549	1394603.567	40°24'52.718"N	104°49'41.837"W	
PROPETRO 12 (4) (RKB) to Mud line (At Slot: SLOT#20 BOST FARM 16C-8-L (2507'FSL & 1136'FWL, SEC.07))						487ft	
Mean Sea Level to Mud line (At Slot: SLOT#20 BOST FARM 16C-8-L (2507'FSL & 1136'FWL, SEC.07))						0ft	
PROPETRO 12 (4) (RKB) to Mean Sea Level						487ft	

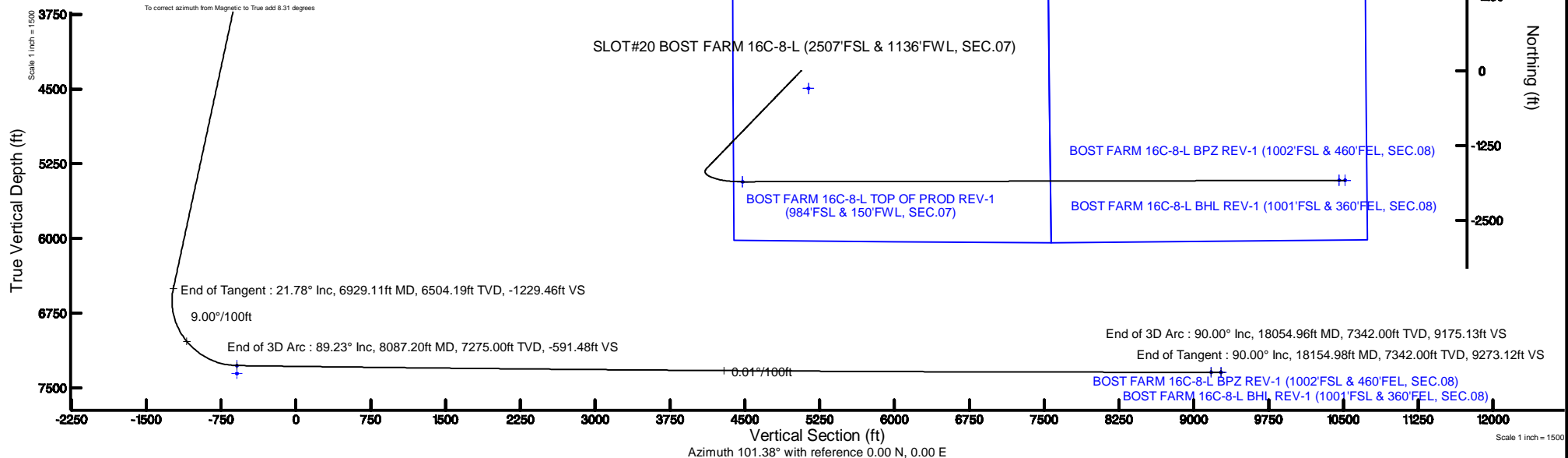
Survey Program

Start MD (ft)	End MD (ft)	Tool	Model	Log Name/Comment	Wellbore
4.00	1750.00	BH# NavTrak	BH# NavTrak (Standard)		BOST FARM 16C-8-L PWB
1750.00	18154.98	BH# AutoTrak Curve	BH# AutoTrak Curve (MagCAD+IFR1, Short spacing)		BOST FARM 16C-8-L PWB



BGGM (1900.0 to 2019.0) Dip: 66.80° Field: 5262 nT
Magnetic North is 8.31 degrees East of True North (at 10/1/2018)

To correct azimuth from Magnetic to True add 8.31 degrees



Targets

Name	MD (ft)	TVD (ft)	Local N (ft)	Local E (ft)	Grid East (US ft)	Grid North (US ft)	Latitude	Longitude
SEC.07-T05N-R66W		2.00	-294.73	122.82	3187161.59	1394309.79	40°24'49.806"N	104°49'40.249"W
SEC.08-T05N-R66W		2.00	-294.73	122.82	3187161.59	1394309.79	40°24'49.806"N	104°49'40.249"W
BOST FARM 16C-8-L TOP OF PROD REV-1 (984'FSL & 150'FWL, SEC.07)	8087.20	7275.00	-1854.68	-976.64	3186074.03	1392741.62	40°24'34.391"N	104°49'54.462"W
BOST FARM 16C-8-L BHL ON PLAT (1001'FSL & 360'FEL, SEC.08)		7342.00	-1829.73	9090.78	3196140.55	1392842.83	40°24'34.621"N	104°47'44.318"W
BOST FARM 16C-8-L BHL REV-1 (1001'FSL & 360'FEL, SEC.08)	18154.98	7342.00	-1829.73	9090.81	3196140.58	1392842.81	40°24'34.621"N	104°47'44.318"W
BOST FARM 16C-8-L BPZ ON PLAT (1002'FSL & 460'FEL, SEC.08)		7342.00	-1830.13	8990.80	3196040.58	1392841.67	40°24'34.618"N	104°47'45.611"W
BOST FARM 16C-8-L BPZ REV-1 (1002'FSL & 460'FEL, SEC.08)	18054.96	7342.00	-1830.09	8990.78	3196040.57	1392841.71	40°24'34.618"N	104°47'45.611"W
BOST FARM 16C-8-L TOP OF PROD ON PLAT (984'FSL & 150'FWL, SEC.07)		7355.00	-1854.70	-976.64	3186074.03	1392741.60	40°24'34.391"N	104°49'54.462"W

Well Profile Data

Design Comment	MD (ft)	Inc (°)	Az (°)	TVD (ft)	Local N (ft)	Local E (ft)	DLS (°/100ft)	VS (ft)
Tie On	4.00	0.000	224.040	4.00	0.00	0.00	0.00	0.00
End of Tangent	250.00	0.000	224.040	250.00	0.00	0.00	0.00	0.00
End of Build	1338.77	21.775	224.040	1312.75	-146.95	-142.10	2.00	-110.31
End of Tangent	6929.11	21.775	224.040	6504.19	-1637.74	-1583.76	0.00	-1229.46
End of 3D Arc	8087.20	89.230	89.912	7275.00	-1854.68	-976.64	9.00	-591.48
End of 3D Arc	18054.96	90.000	89.805	7342.00	-1830.09	8990.78	0.01	9175.13
End of Tangent	18154.98	90.000	89.805	7342.00	-1829.75	9090.81	0.00	9273.12